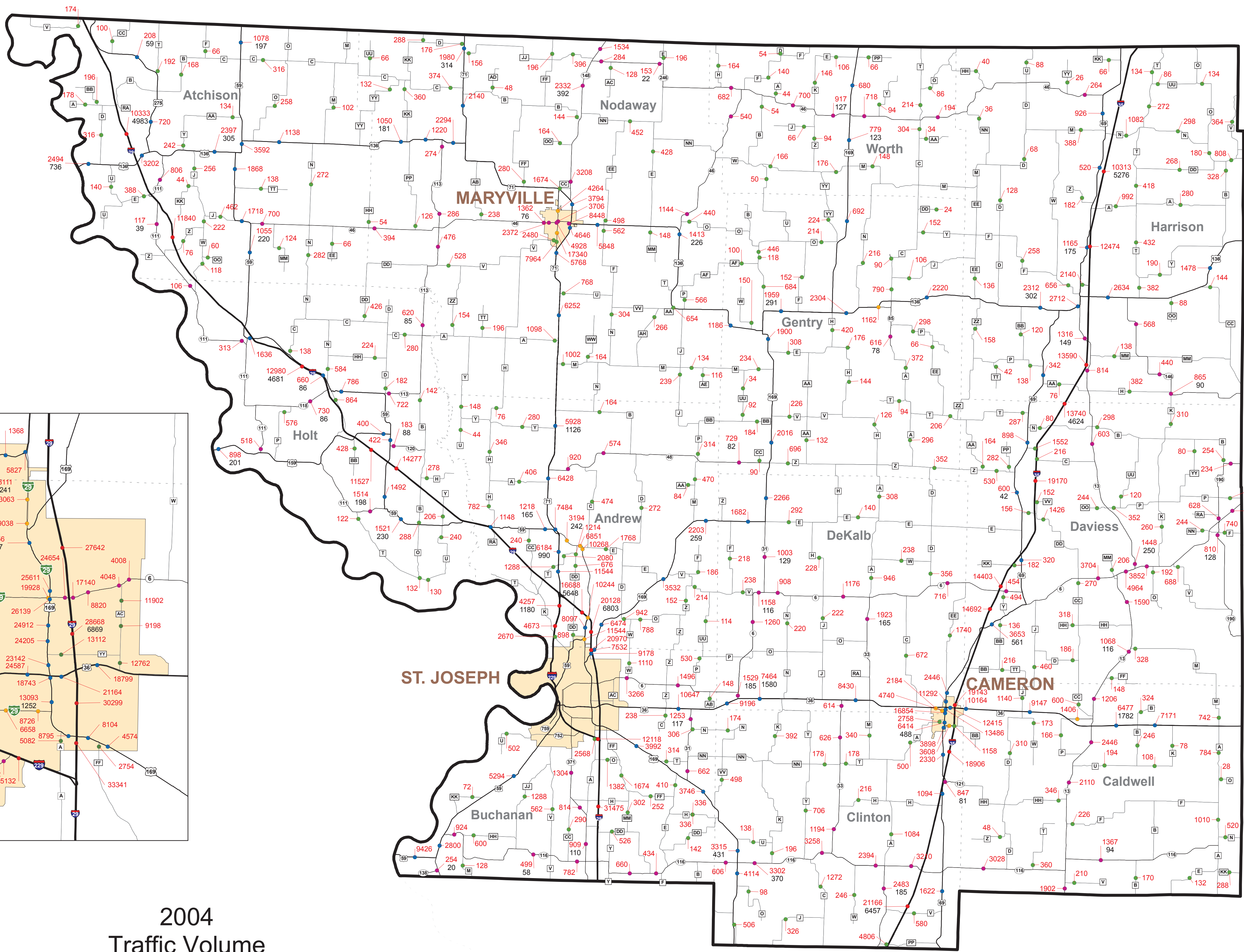
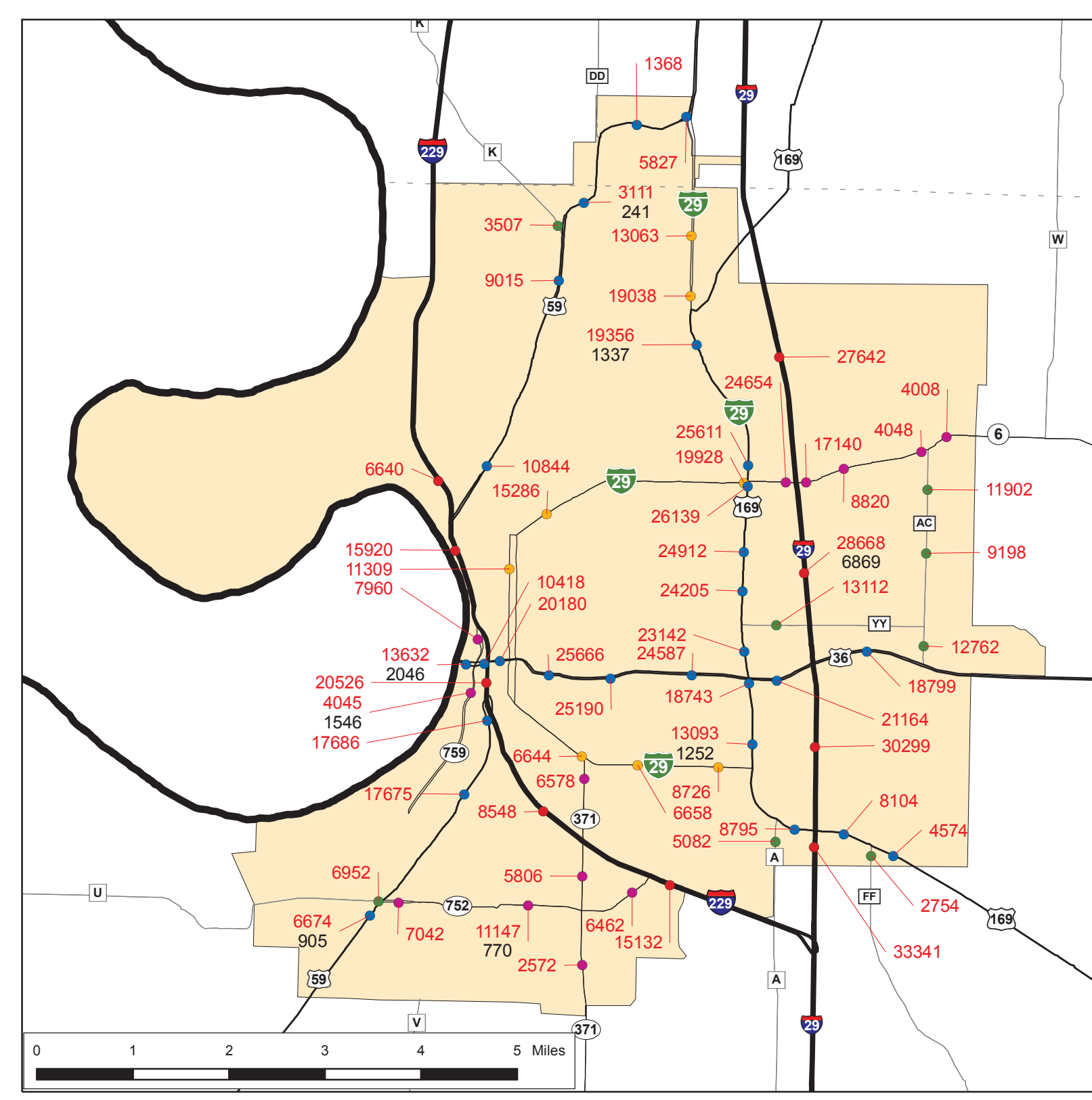
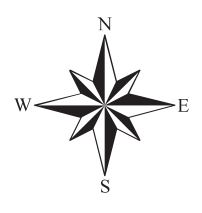


2004 District 1 Traffic Volume Map

Prepared by:
 Missouri Department of Transportation
 Transportation Planning
 2217 St. Mary's Blvd.
 Jefferson City, MO 65109
 Phone (573) 526-8058
 Fax (573) 526-8052
 www.modot.org

This report contains information that is protected from disclosure by federal law, 25 USC Section 406 and the Missouri Open Records Law (Sunshine Act), Section §10.021, RSMo. Please review MoDOT's policy and procedure manual on the Sunshine Act before releasing any of the information contained herein.



Legend

- Interstate
- US Routes
- MO Routes
- Business Routes and Loops
- Lettered, Spur, and Alternate Routes

23462 Traffic Volume (AADT)
 1673 Truck Volume

Urban Areas
 Counties

2004 Traffic Volume and Commercial Vehicle Counts District 1



AADT = Average Annual Daily Traffic
 Note: Traffic Volumes Represent Estimated Average Daily Traffic
 Note: Truck Volumes Shown on Map Represent the 2004 Average Daily Traffic and Have Not Been Seasonally Adjusted.