

Missouri Department of Transportation

2004 District 4 Traffic Volume Map

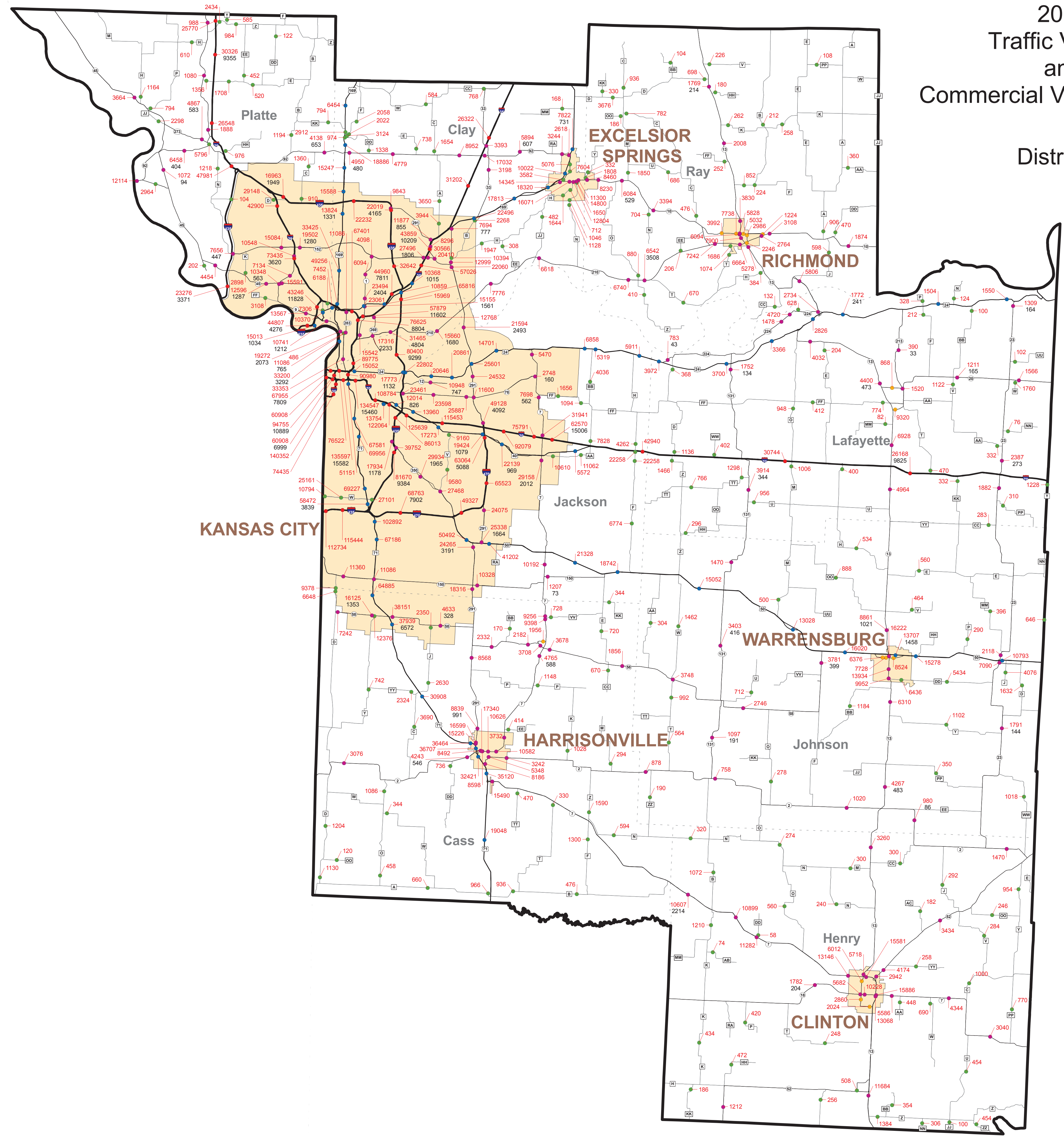
Prepared by:
Missouri Department of Transportation
Transportation Planning
2217 St. Mary's Blvd.
Jefferson City, MO 65109
Phone (573) 526-8058
Fax (573) 526-8052

www.modot.org

This report contains information that is protected from disclosure by federal law, 28 USC Section 438 and the Missouri Open Records Law (Sunshine Act), Section 610.021, RSMo. Please review MoDOT's policy and procedure manual on the Sunshine Act before releasing any of the information contained herein.



2004 Traffic Volume and Commercial Vehicle Counts District 4



Legend

- Interstate
- US Routes
- MO Routes
- Business Routes and Loops
- Lettered, Spur, and Alternate Routes

23462 Traffic Volume (AADT)
1673 Truck Volume

Urban Areas

Counties



AADT = Average Annual Daily Traffic
Note: Traffic Volumes Represent Estimated Average Daily Traffic
Note: Truck Volumes Shown on Map Represent the 2004 Average Daily Traffic and Have Not Been Seasonally Adjusted.