



# Route 141 and I-44 Design-Build Project Community Involvement Group

March 21, 2016



# Purpose of CIG



1. Share information with major stakeholders
2. Keep stakeholders informed of the process
3. Reduce uncertainty through the project
4. Stakeholders share info with their organizations



# Project Description

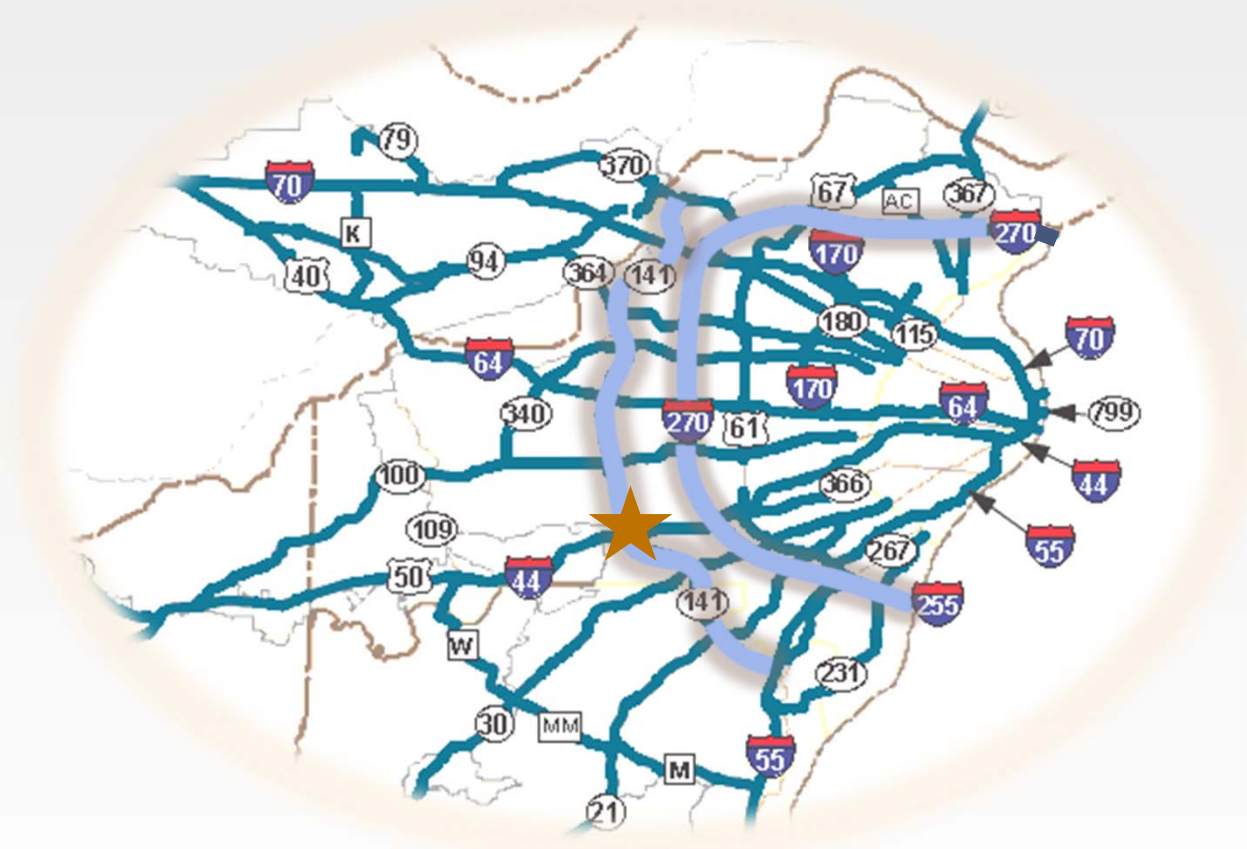


- Maximize mobility and roadway improvements on Route 141 corridor
- Mitigate congestion and reduce delay at Vance Rd intersection
- Upgrade Route 141 and I-44 interchange
- Provide a design that reduces crashes
- Improve drainage





# Project Location





# Project Area



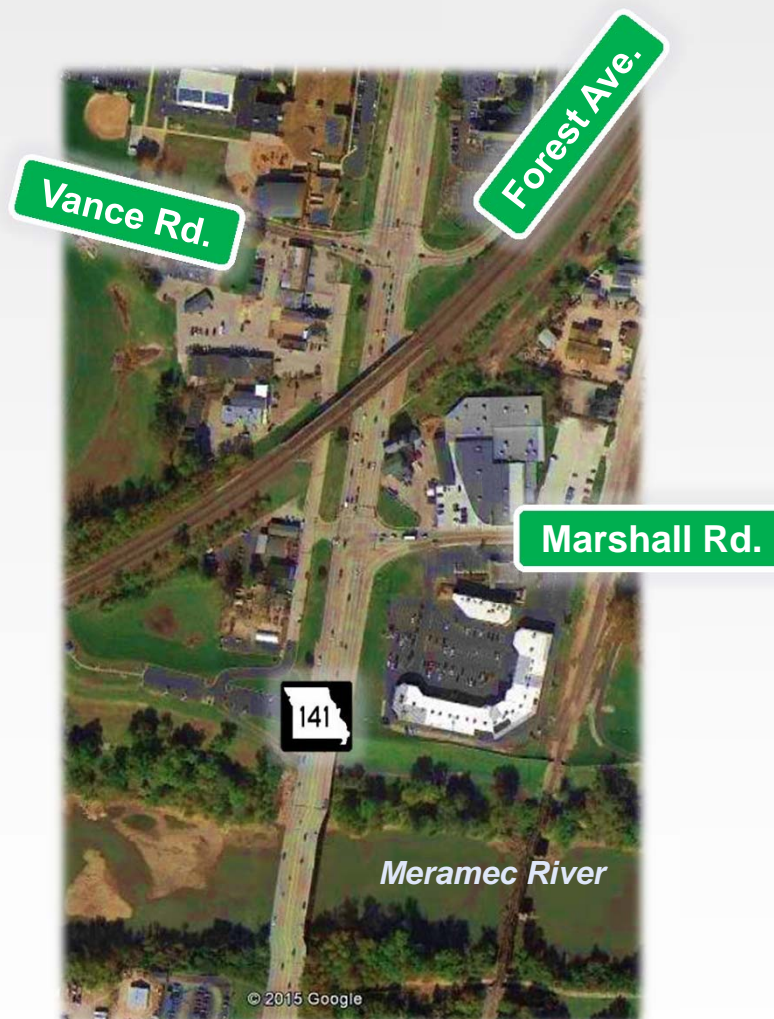


# Project Area



## Vance Rd Intersection

- Route 141 carries six lanes
- Locally-owned side streets have limited R/W
- Intersection limits include a church, schools, and businesses
- Union Pacific Railroad bridge over Route 141 restricts traffic





# Project Area



Route 141 at Vance  
Looking North – PM Peak



Forest Ave at Route 141  
Looking West – PM Peak

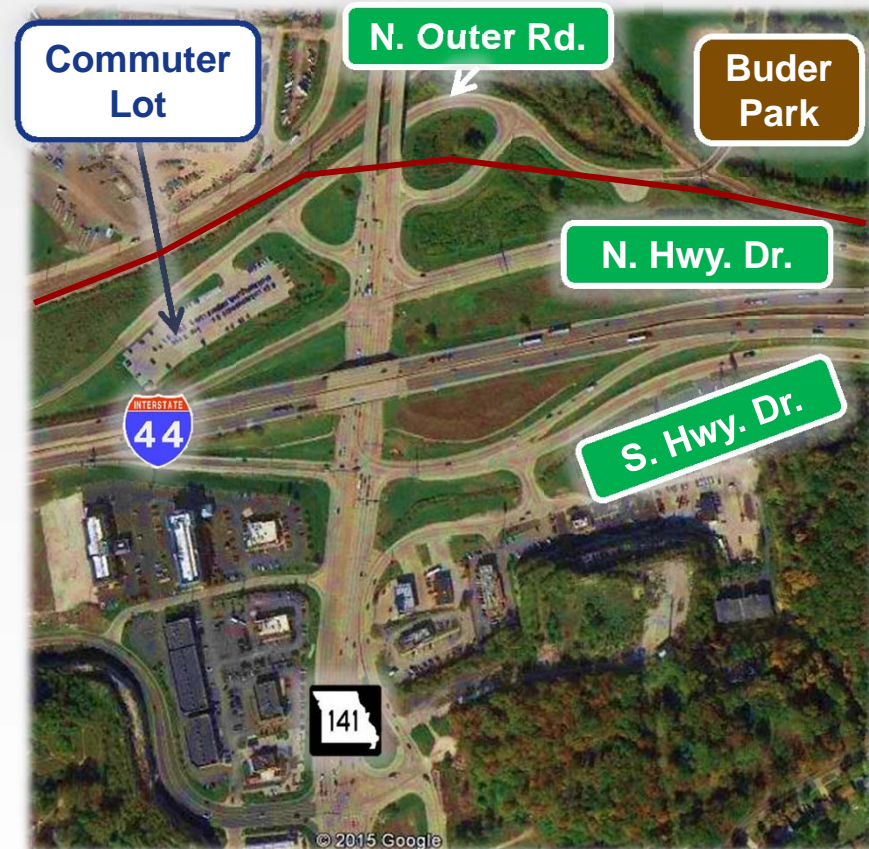


# Project Area



## I-44 Interchange

- Route 141 carries six lanes over BNSF Railroad
- Commuter Lot is serviced by two MetroBus routes
- Overhead Ameren Transmission Line crosses Route 141
- 100,000 vehicles use I-44 per day while 60,000 vehicles use Route 141







# Project Area



Route 141  
Looking South  
AM Peak



Eastbound I-44 Offramp  
Looking Northwest – AM Peak



# Project Description



## Crash History in Project Limits 2010 to 2014

Roadway	Total Crashes	Rear End Crashes*
Route 141	923	645
I-44	296	123

\* Included in total crash number



# Project Area



Flooding During Heavy Rain Events  
(occurs approx. 5-6 times per year)





# Project Area



Meramec Flooding at Interchange in 2015 Looking North  
(occurs approximately every 8 – 10 years)



# Project Goals



1. Deliver the project within the program budget of \$25 million.
2. Maximize mobility on Route 141 and improve efficiency at the I-44 interchange and Vance Road intersection.
3. Deliver the project in a manner which demonstrates the importance of safety.
4. Provide a quality project resulting in a long-lasting transportation facility that minimizes future maintenance.
5. Deliver the project using a diverse workforce.
6. Complete the project by July 15, 2018.



# Schedule



Request for Qualifications released	July 7, 2015
Shortlisted teams announced	August 10, 2015
Request for Proposals released	September 2, 2015
Five one-on-one bi-weekly discussions with teams	September 7 through November 6, 2016
Final Proposals due	November 25, 2015
Apparent Best Value selection	January 6, 2016
Contract signed	February 10, 2016
Design	Ongoing
Begin construction	Summer 2016
Complete construction	July 15, 2018

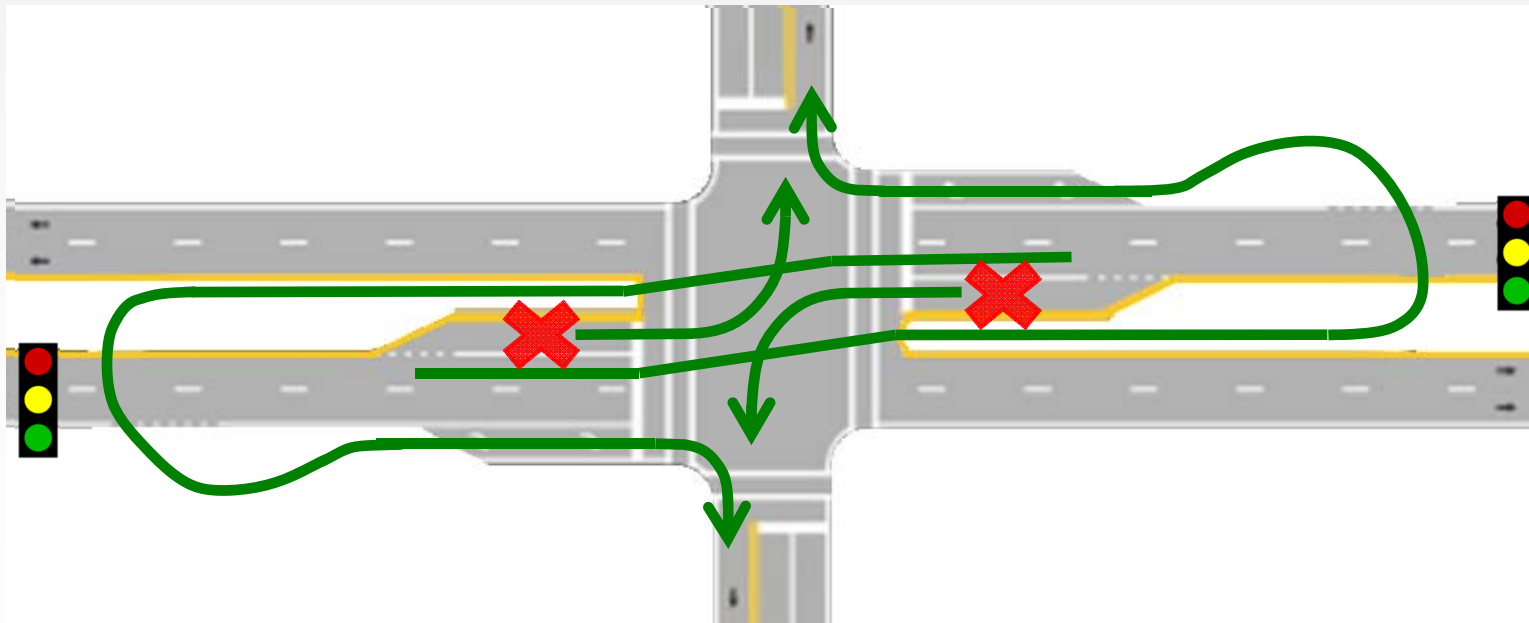


# Thru Turns



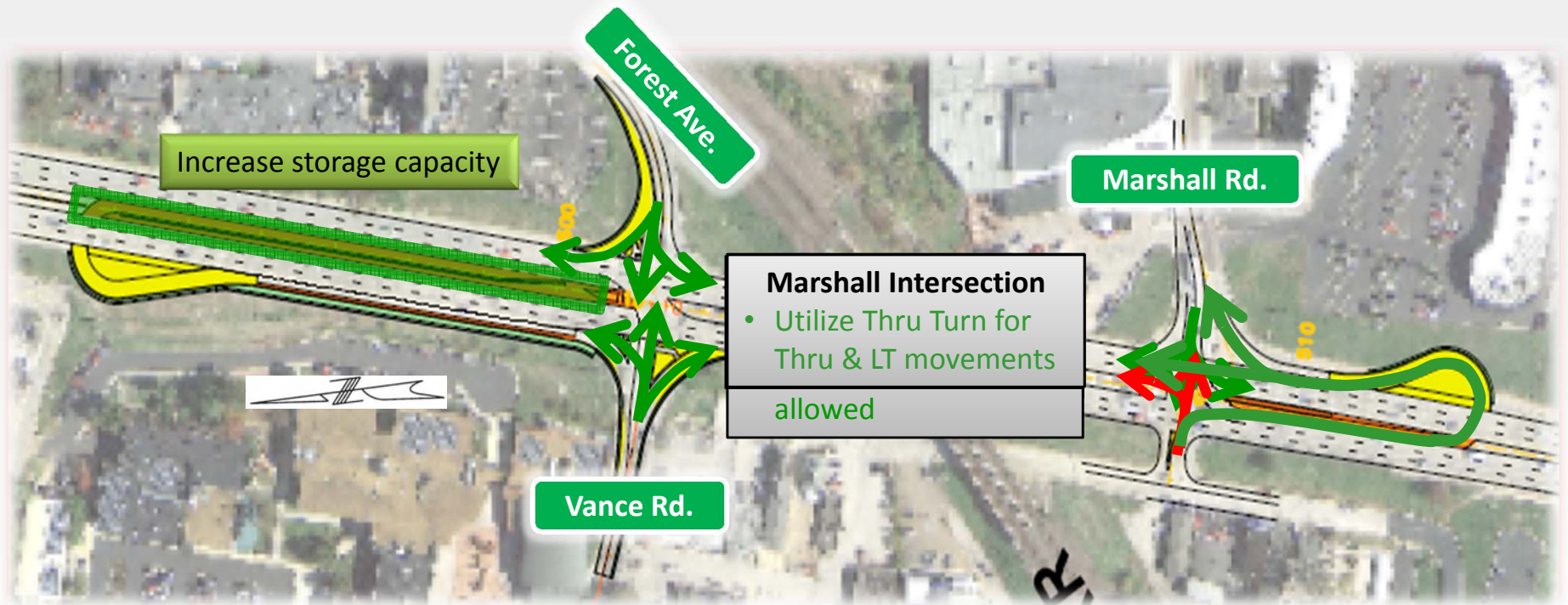
## Vance Road and Marshall Road Intersections

- **Thru Turn Intersection** covering the Vance Road and Marshall Road intersections





# Vance & Marshall Intersections







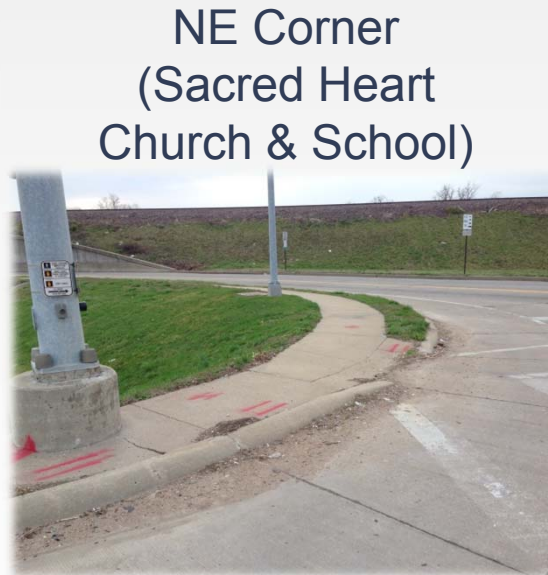
# Vance & Marshall Intersection



- Existing crosswalk and sidewalk conditions



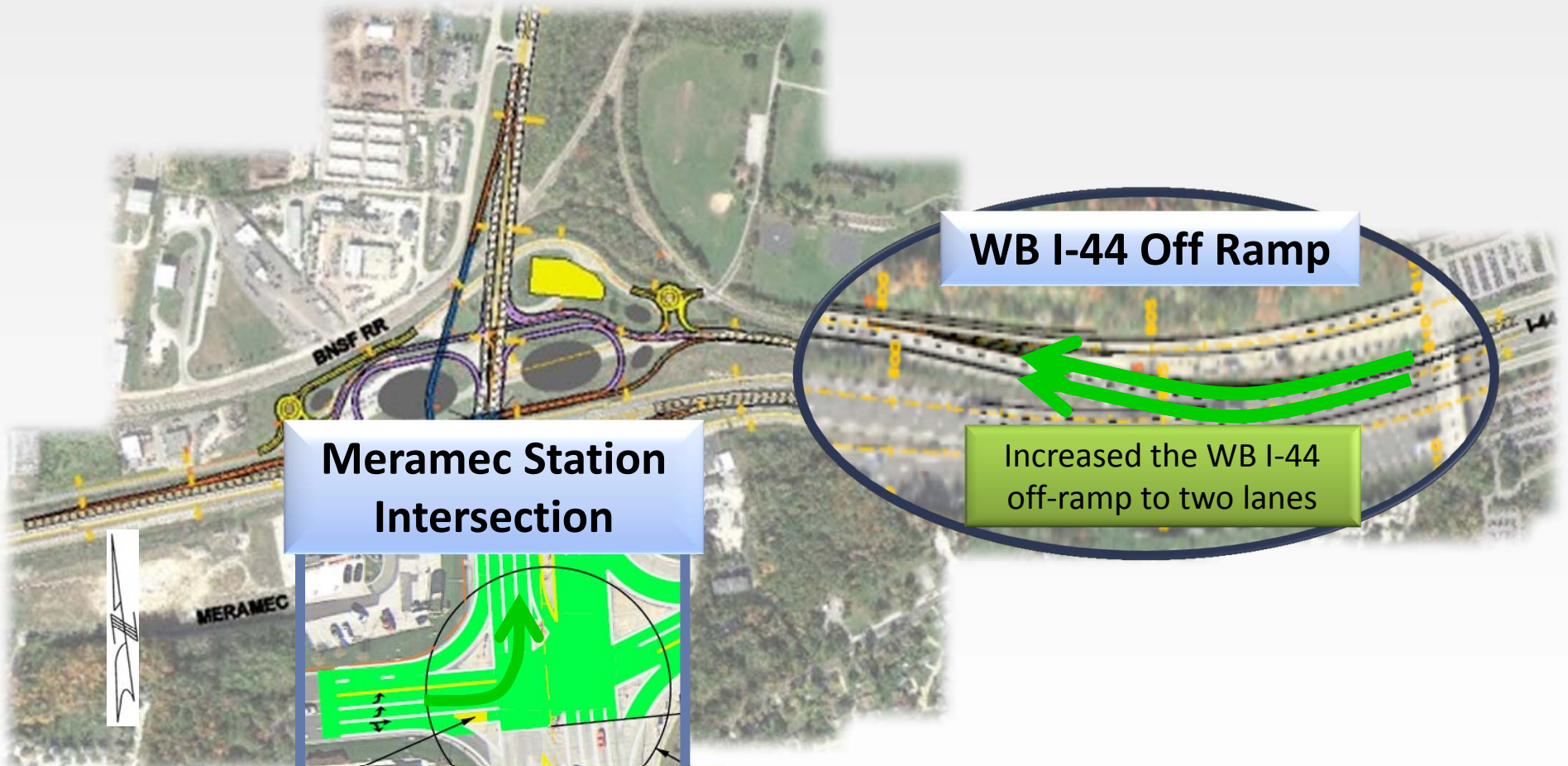
NW Corner Looking East



SW Corner Looking North  
Toward VP Schools



# Interchange



**WB I-44 Off Ramp**

Increased the WB I-44 off-ramp to two lanes

**Meramec Station Intersection**

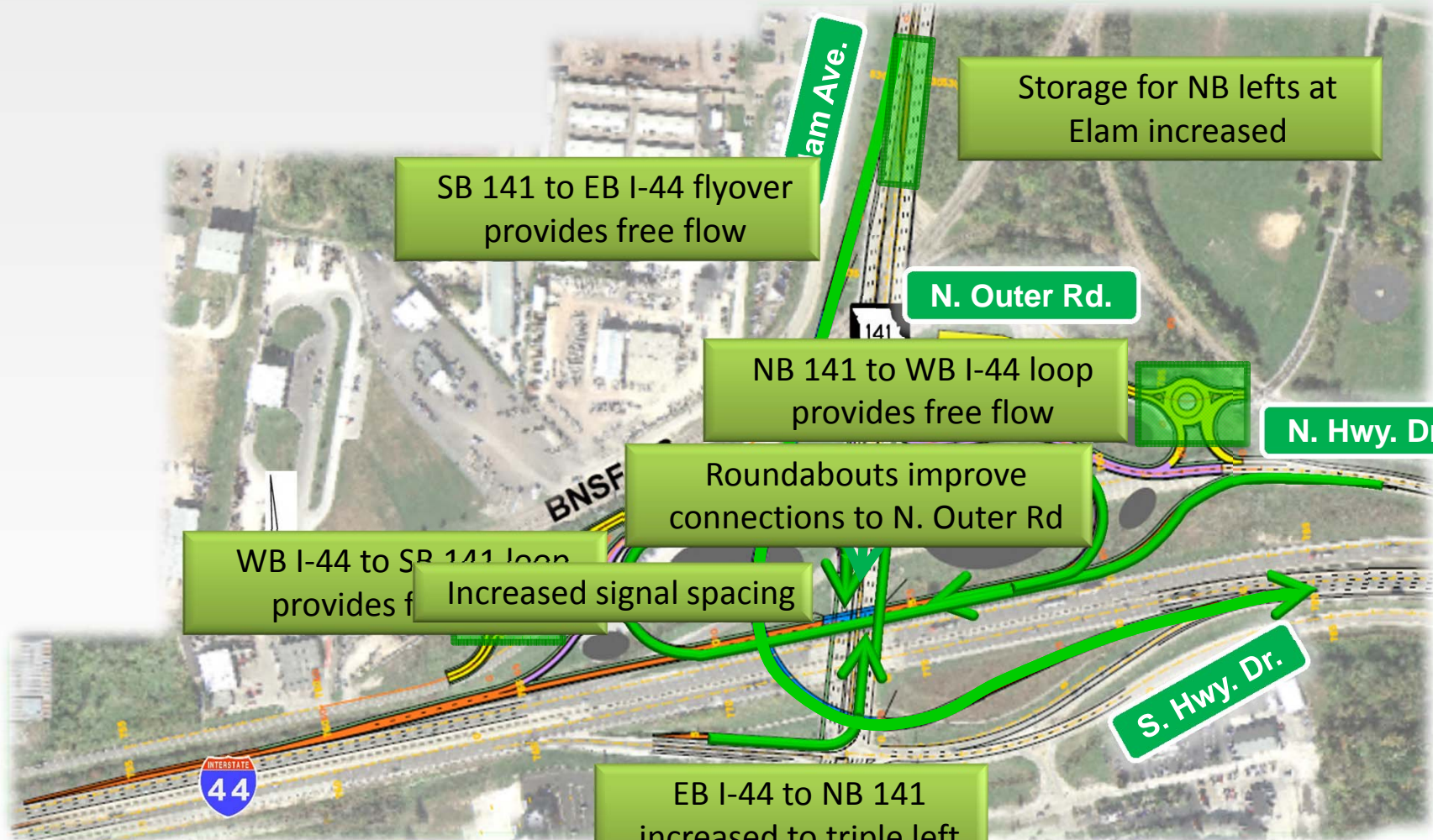


EB Meramec Station to NB 141 increased to dual lefts





# Interchange





# Traffic Impacts



- “Off-line” construction
  - Most work off of 141 and I-44
  - Commitments to off-peak temporary lane closures for impacts
- North Outer Rd connections with 141 closed
  - Detours required to access North Outer Rd
- Vance Rd Intersection
  - Summer of 2017 completion
- July 15, 2018 completion





# North Outer Road Detour





# Safety Improvements

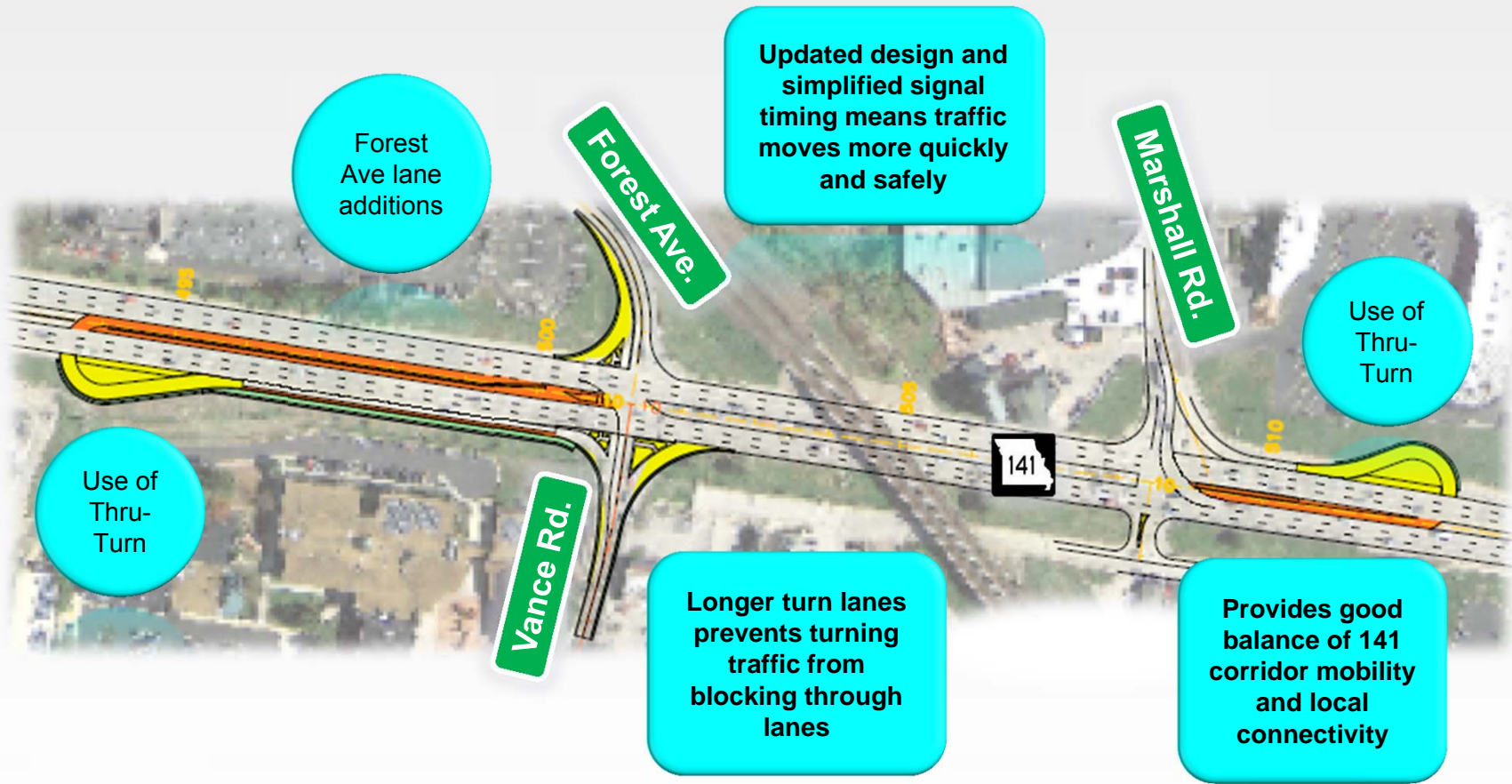


- Thru Turns
  - 19 fewer conflict points
- Interchange
  - 25% crash reduction at North and South Hwy Drive Intersections
- 141 Corridor
  - 57 fewer crashes per year
- Overall
  - 20% crash reduction
- Improved traffic flow results in fewer crashes





# Project Overview

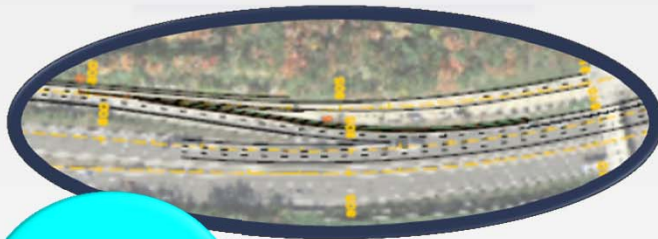




# Project Overview



## WB I-44 Off Ramp



Dual-lane exit from WB I-44

Free flow flyover ramp

Updated design moves traffic faster and more efficiently

2 free flow loop ramps

N. Outer Rd.

Easier access to/from N. Outer Rd.

N. Hwy Dr.

Triple left reduces backups and improves safety for EB ramp

Ramps separated from interstate

S. Hwy. Dr.







# Next Steps



- Public Meeting – Date TBD
  - Tentatively planned for 1 month prior to construction
  
- Future CIG meetings
  - How often?
  
- Rte 141 & I-44 Design Build - Contact Info
  - [I44.Route141@modot.mo.gov](mailto:I44.Route141@modot.mo.gov)



# Questions?

