



Route 141 and I-44 Design-Build Project Update

Community Information Group (CIG)

February 6, 2017



Project Description

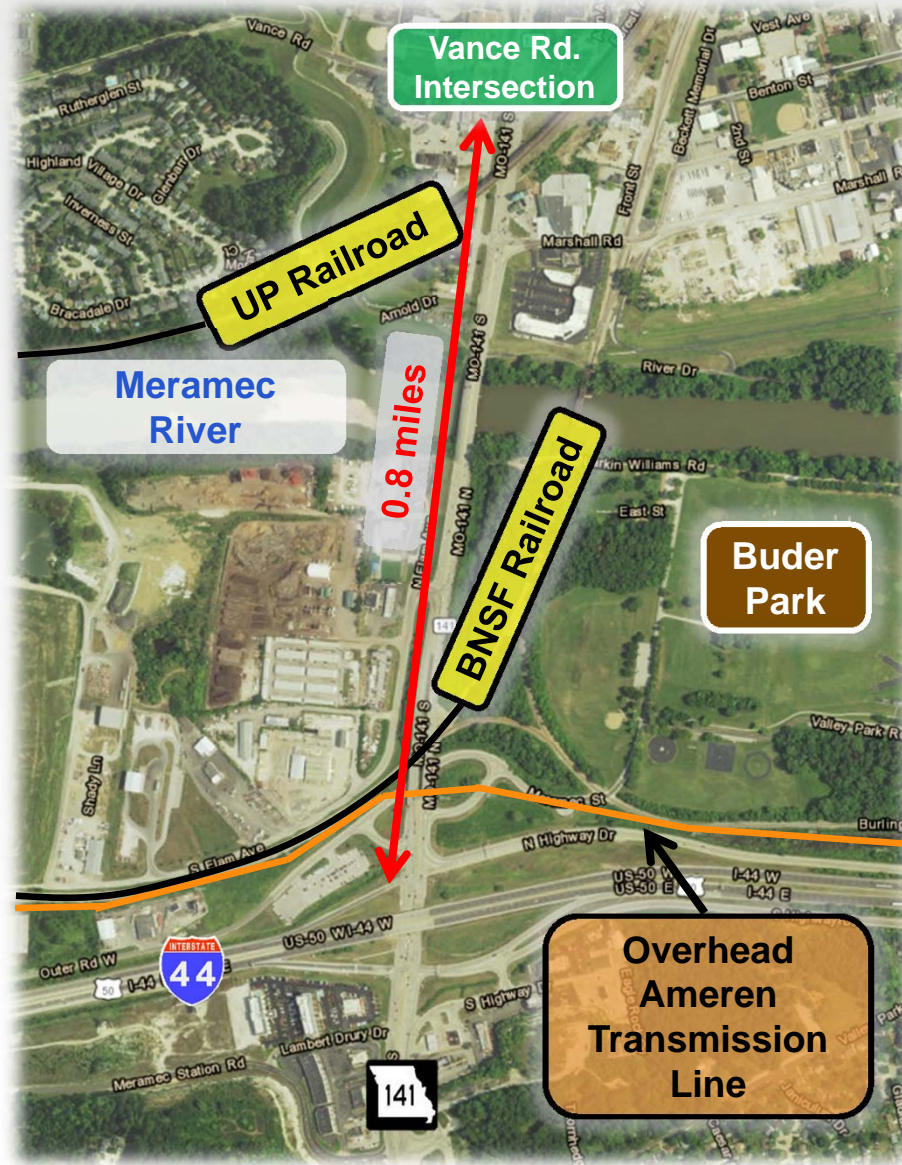


- Maximize mobility and roadway improvements on Route 141 corridor
- Mitigate congestion and reduce delay at Vance Rd intersection
- Upgrade Route 141 and I-44 interchange
- Provide a design that reduces crashes
- Improve drainage





Project Area





Project Area



Route 141 at Vance
Looking North – PM Peak



Forest Ave at Route 141
Looking West – PM Peak



Project Area



Route 141
Looking South
AM Peak



Eastbound I-44 Offramp
Looking Northwest – AM Peak



Project Goals



1. Deliver the project within the program budget of \$25 million.
2. Maximize mobility on Route 141 and improve efficiency at the I-44 interchange and Vance Road intersection.
3. Deliver the project in a manner which demonstrates the importance of safety.
4. Provide a quality project resulting in a long-lasting transportation facility that minimizes future maintenance.
5. Deliver the project using a diverse workforce.
6. Complete the project by July 15, 2018.



I-44 Interchange



WB I-44 Off Ramp



Dual-lane exit from WB I-44

Free flow flyover ramp

Updated design moves traffic faster and more efficiently

N. Outer Rd.

2 free flow loop ramps

Easier access to/from N. Outer Rd.

N. Hwy Dr.

Ramps separated from interstate

S. Hwy. Dr.

Triple left reduces backups and improves safety for EB ramp













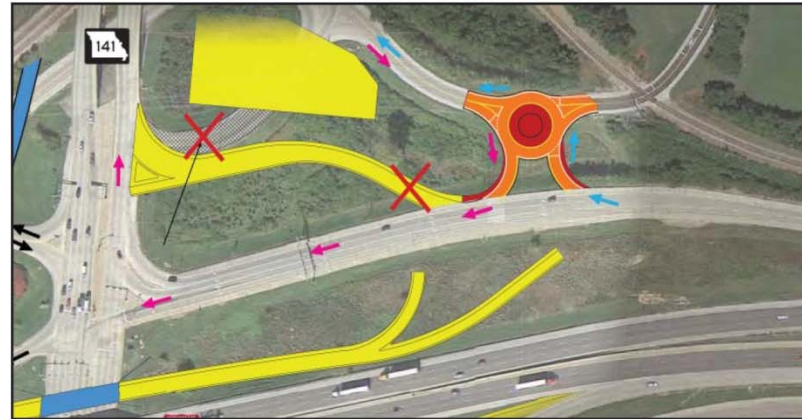


Park and Ride lot moves

Starting Monday, February 20, the Park and Ride lot on the west side of Route 141 will close. It will move to the east side of Route 141, off the north outer road.

While crews are working on the outer road system around the Park and Ride lot, drivers on both directions of I-44 and on Route 141 will need to use a detour to get to the Park and Ride lot. They can use South Highway Drive, Maritz and North Highway Drive to get the eastern roundabout. Take the leg to the north outer road and the Park and Ride lot will be on the left. Until March, drivers on southbound Route 141 can continue to take the ramp from Route 141 to the outer road and turn right to get to the Park and Ride lot until crews close that ramp.

To get from the lot, drivers can turn right, take the roundabout and turn onto North Highway Drive. Follow North Highway Drive to Route 141 -- from there, they can turn right onto northbound Route 141, go straight to get on westbound I-44, or turn left onto southbound Route 141 to get to eastbound I-44.



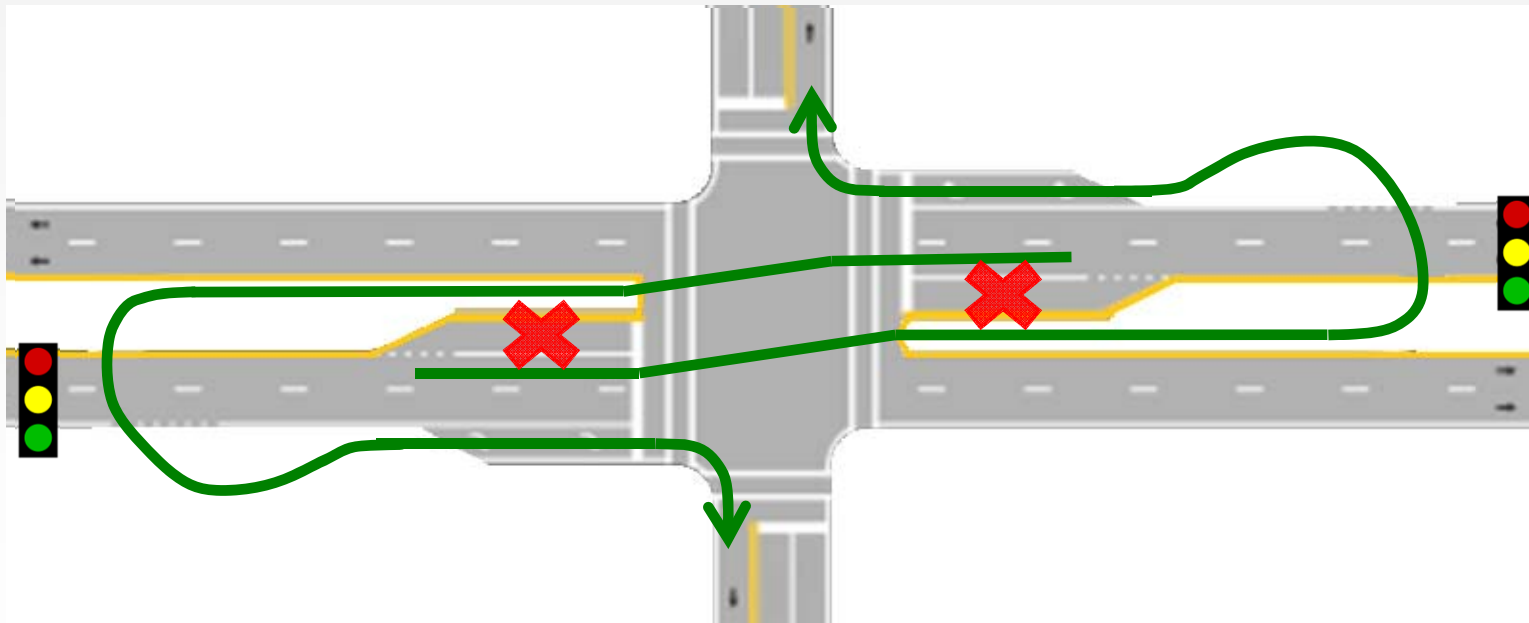


Project Definition



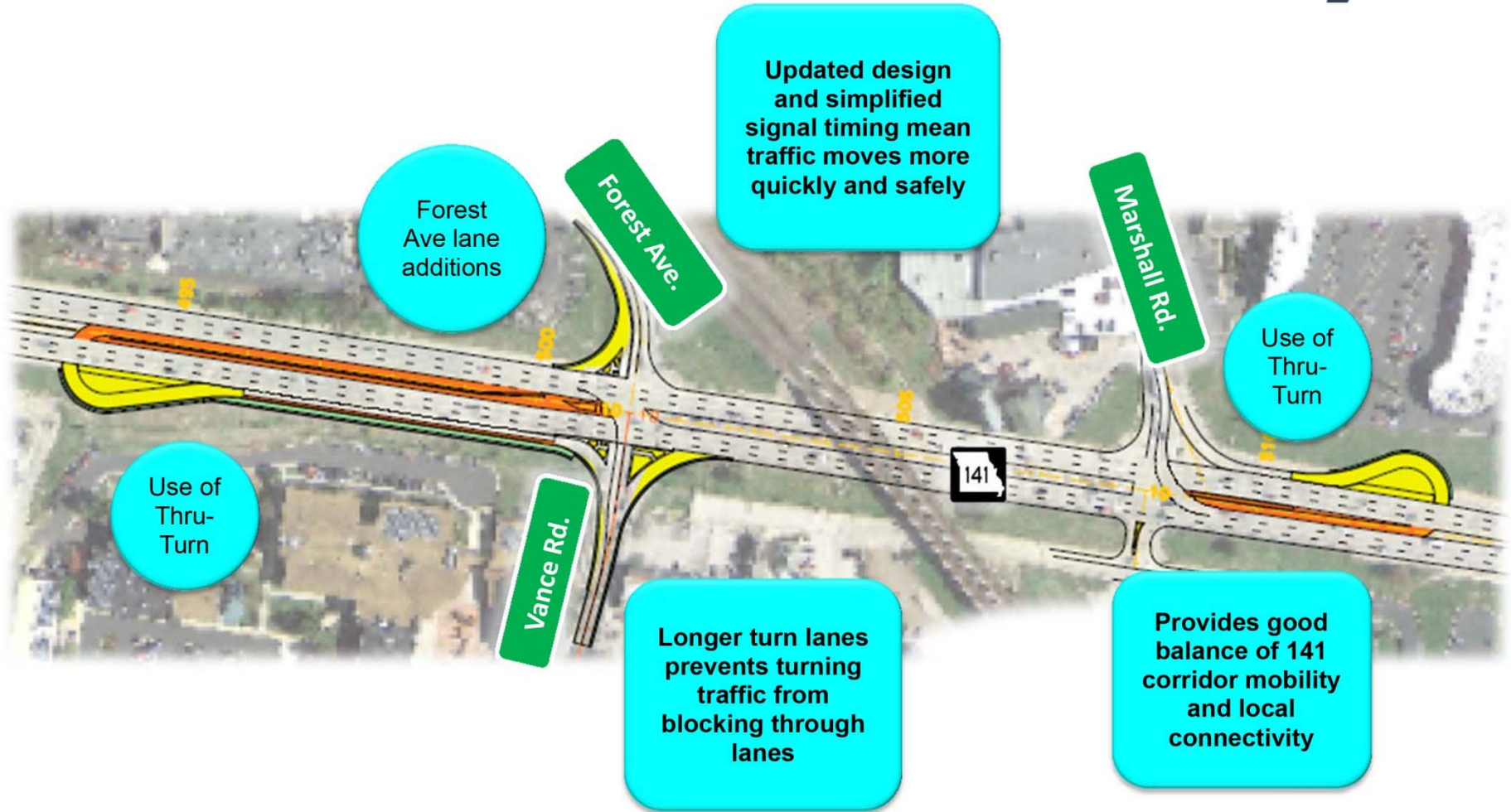
Vance Road and Marshall Road Intersections

- **Thru Turn Intersection** covering the Vance Road and Marshall Road intersections



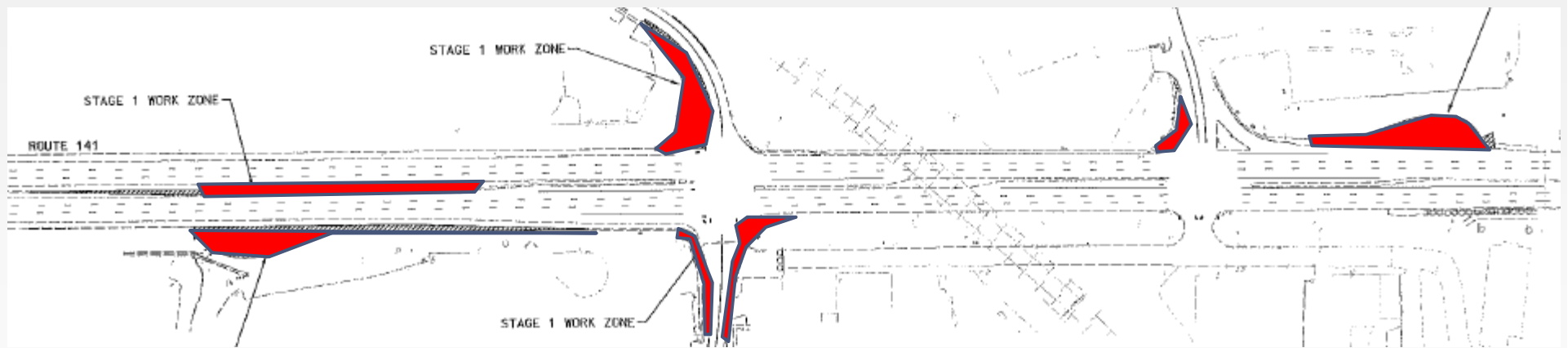


Vance Road Intersection





What we're doing now



Now through the end of May



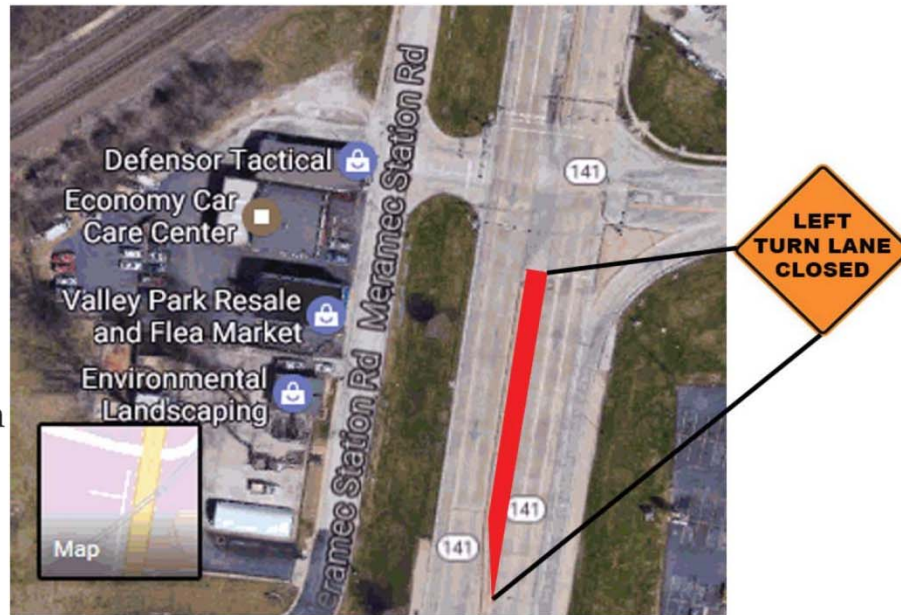




Upcoming left turn closure

As a part of on-going work to construct the thru-turns on the Route 141 Design Build project, MoDOT will be closing the left turn lane from northbound Route 141 to Meramec Station Road for up to two weeks in late May. This will let the department safely and efficiently open both the thru-turn north of Vance and the one south of Marshall at the same time.

Drivers will continue to have full access to properties on Meramec Station Road, but northbound Route 141 drivers will need to continue north to Helfrich Road, make a u-turn and head south to get to Meramec Station Road while the left turn lane is closed. A map of the detour is to the right. During this time, drivers will also have full access from Meramec Station Road to both directions of Route 141. When the thru-turns are complete and opened, drivers wanting to head north on Route 141 will need to make a right and take the southern thru turn. More specific details will be released before the thru-turns open.

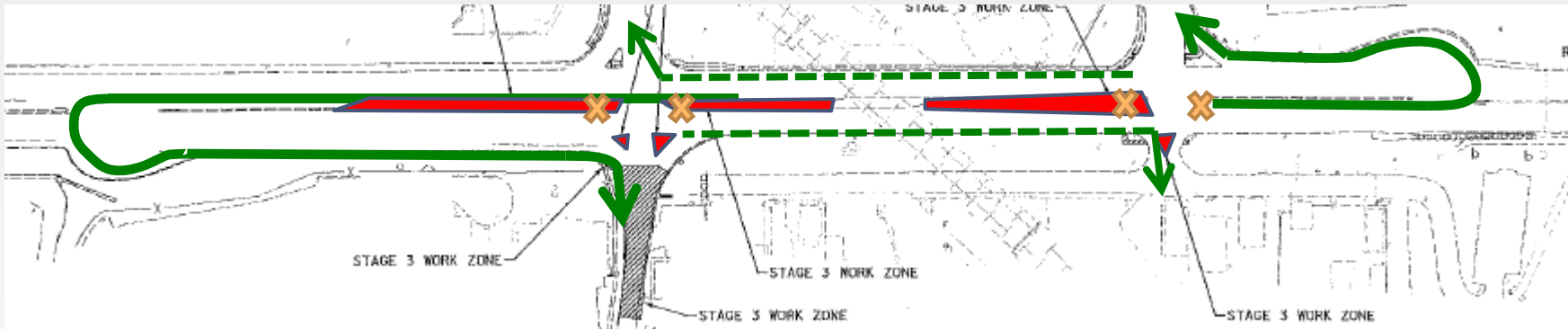


For additional information or details, please
call 1-888-ASK-MODOT or e-mail
I44.Route141@modot.mo.gov





Opening Thru-turns



Thru-turns open in June; remaining work completed by August

