



Route 141 and I-44 Design-Build Project Update

Community Information Group (CIG)

February 1, 2018



Project Area





Project Goals



1. Deliver the project within the program budget of \$25 million.
2. Maximize mobility on Route 141 and improve efficiency at the I-44 interchange and Vance Road intersection.
3. Deliver the project in a manner which demonstrates the importance of safety.
4. Provide a quality project resulting in a long-lasting transportation facility that minimizes future maintenance.
5. Deliver the project using a diverse workforce.
6. Complete the project by July 15, 2018.



Project Description



- Maximize mobility and roadway improvements on Route 141 corridor
- Mitigate congestion and reduce delay at Vance Rd intersection
- Upgrade Route 141 and I-44 interchange
- Provide a design that reduces crashes
- Improve drainage





Maintenance of Traffic



- “Off-line” construction
 - Most work off of 141 and I-44
 - Commitments to off-peak temporary closures for impacts
- North Outer Rd connections with 141 closed
 - Detours required to access North Outer Rd
- Vance Rd Intersection
 - Summer of 2017 completion
- July 15, 2018 completion





Vance & Marshall Intersections







Interchange



PROPOSED

SB 141 to EB I-44 flyover provides free flow

Storage for NB lefts at Elam increased

N. Outer Rd.

NB 141 to WB I-44 loop provides free flow

N. Hwy. Dr.

Roundabouts improve connections to N. Outer Rd

WB I-44 to SB 141 loop provides free flow

Increased signal spacing

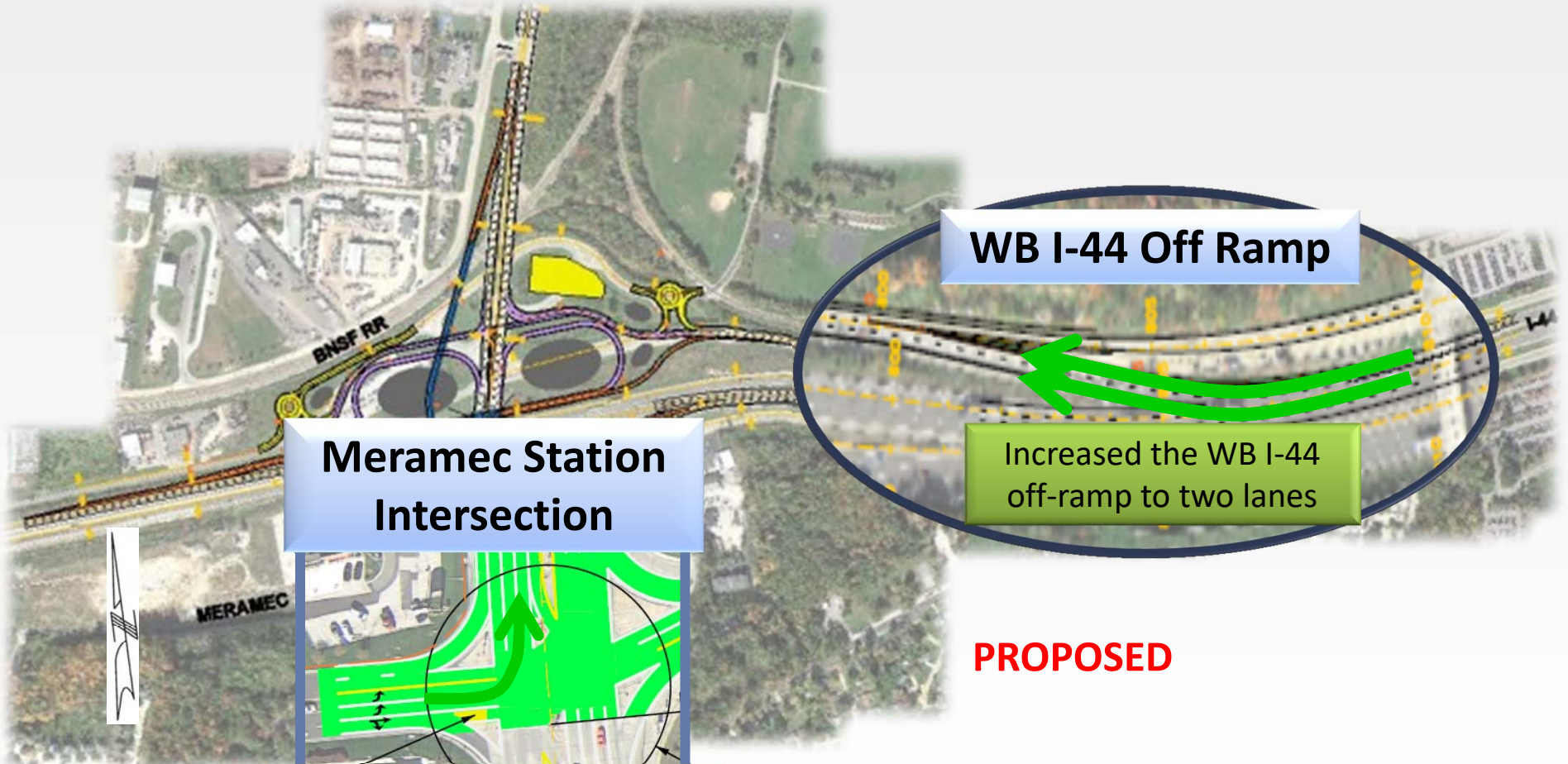
S. Hwy. Dr.

EB I-44 to NB 141 increased to triple left





Interchange



WB I-44 Off Ramp

Increased the WB I-44 off-ramp to two lanes

Meramec Station Intersection



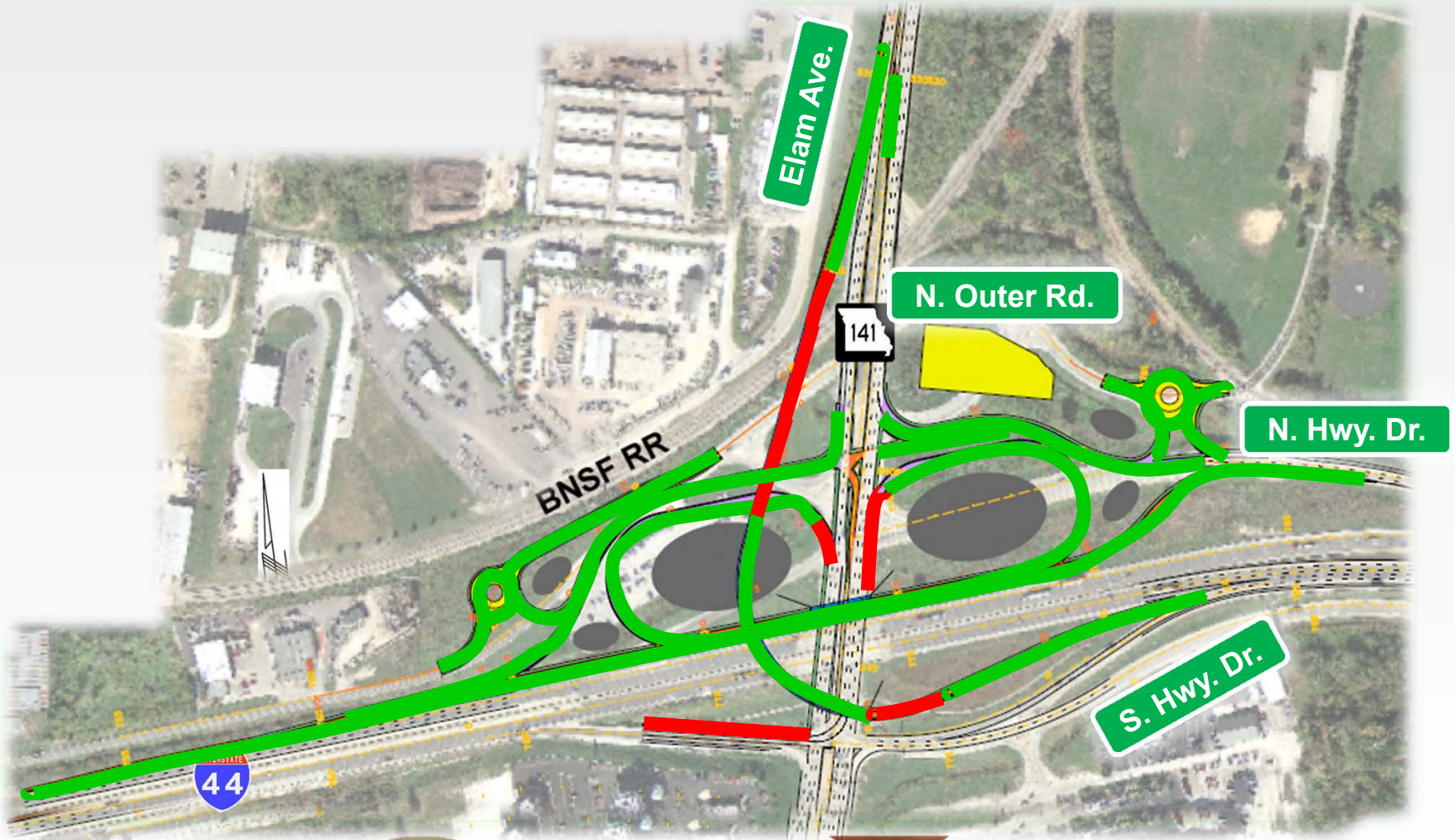
EB Meramec Station to NB 141 increased to dual lefts

PROPOSED





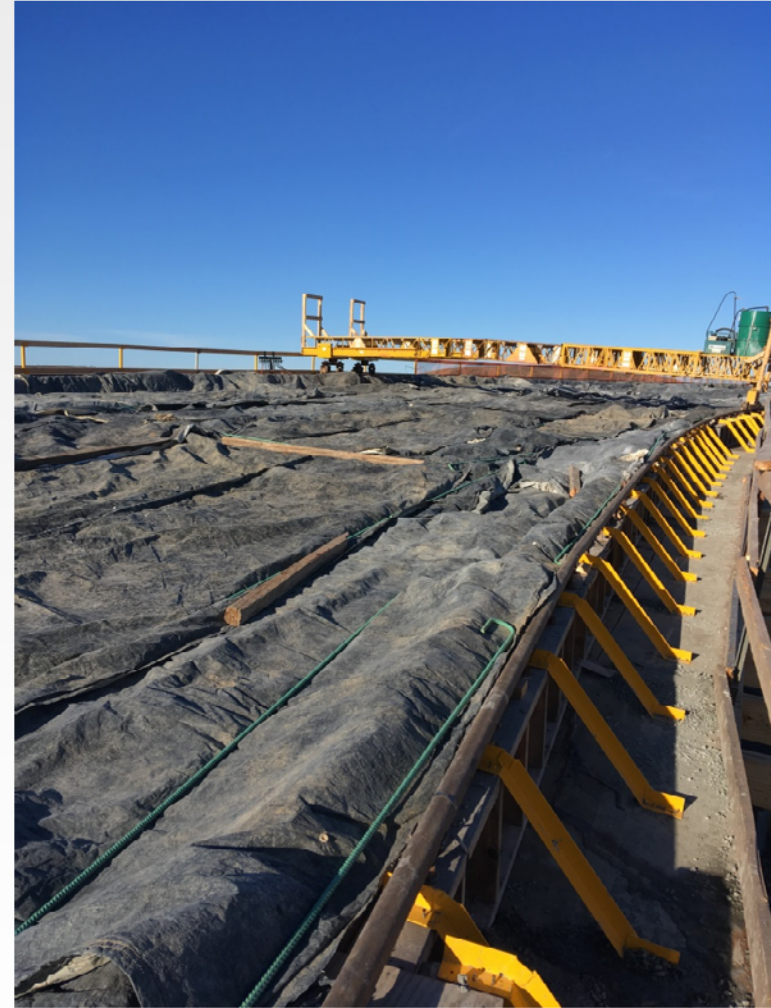
Current Progress









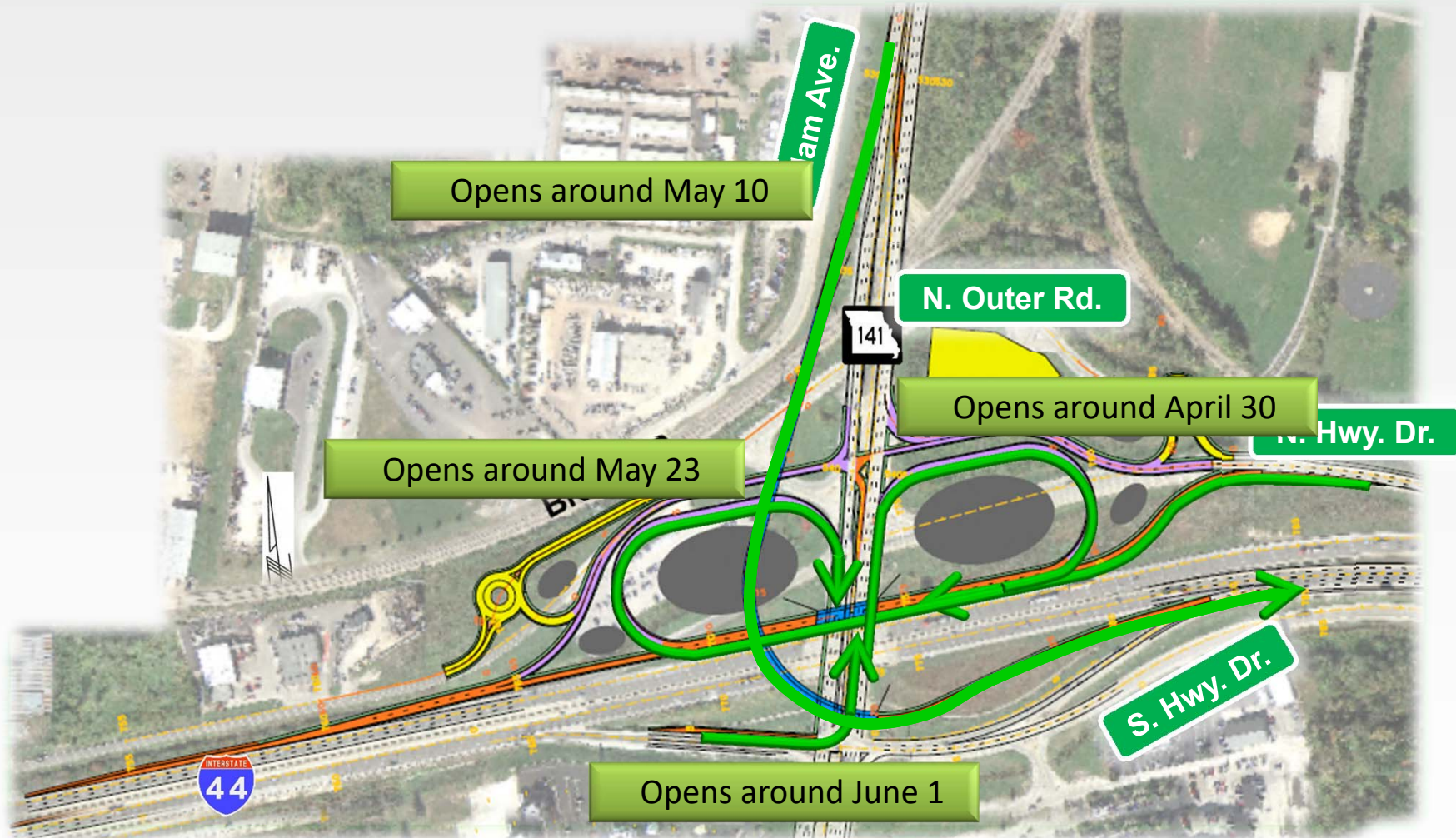






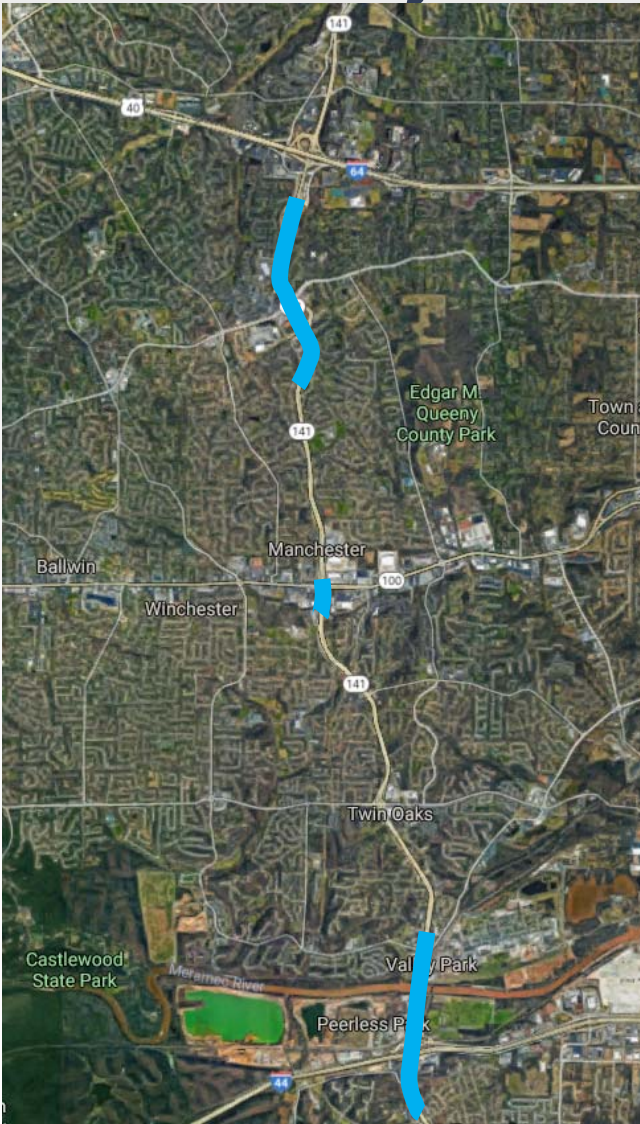


Anticipated Ramp Openings





Upcoming Rte. 141 Projects



- Pavement repairs and asphalt overlay from south of South Outer Forty to north of Milldale
- Epoxy overlay on the bridges over Manchester Road and Grand Glaize Creek
- Pavement repairs and asphalt overlay from north of Vance to north of Meramec Station Road/River Valley Drive
- Epoxy overlay and joint replacements on the bridges over the Meramec River
- Epoxy overlay on the bridges over BNSF RR/North Outer Road

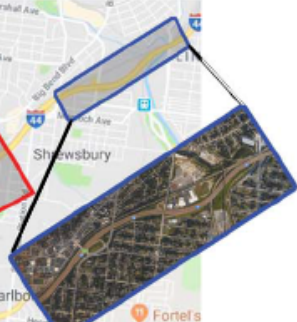


Upcoming construction on I-44 in St. Louis County

2018

Murdoch to Route 141

- Pavement repairs and resurfacing
- March through December
- Off-peak lane closures each direction
- Will not include between Lindbergh and Soccer Park
- Overnight ramp closures



2018-Spring 2019

I-44 over BNSF Railroad

- Murdoch Ave to city limits
- March through December
- Three eastbound, two westbound lanes open
- Eastbound traffic shifted to westbound bridge
- Shrewsbury Ramp to EB I-44 ramp closed
- Resurfacing in Spring 2019

Fall 2018-2021

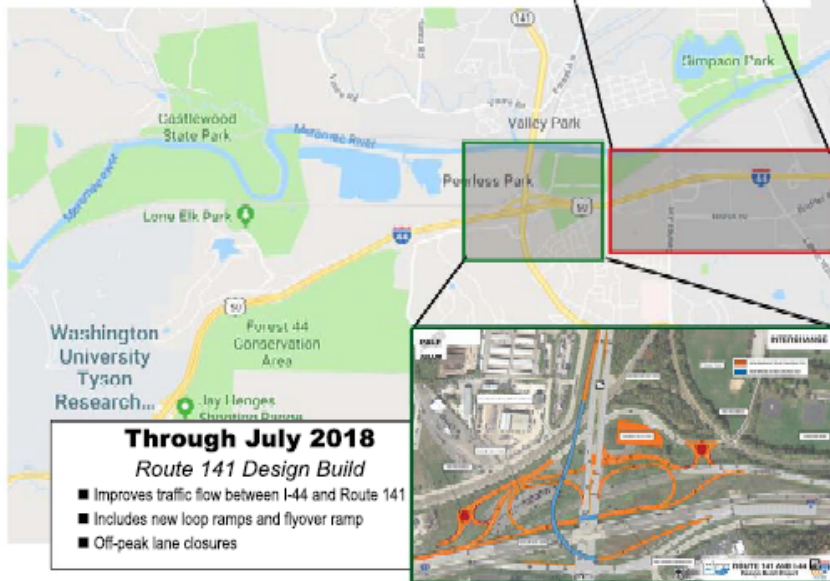
I-44 Bridges over Meramec

- Replace the westbound and eastbound I-44 bridges
- Replace the I-44 ramp bridges to, from Watson Road
- One I-44 lane closed around the clock, each direction
- Summer ramp closures to replace Watson bridges
- Shifting traffic and lanes throughout project
- Starts after Route 141 Design Build completed

Through July 2018

Route 141 Design Build

- Improves traffic flow between I-44 and Route 141
- Includes new loop ramps and flyover ramp
- Off-peak lane closures



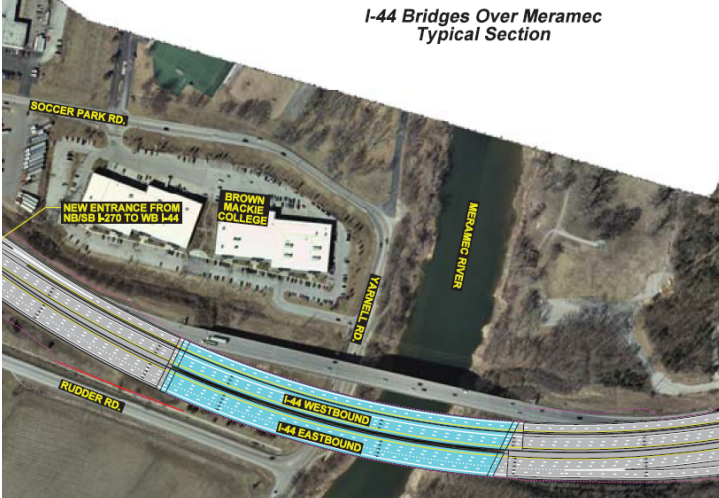
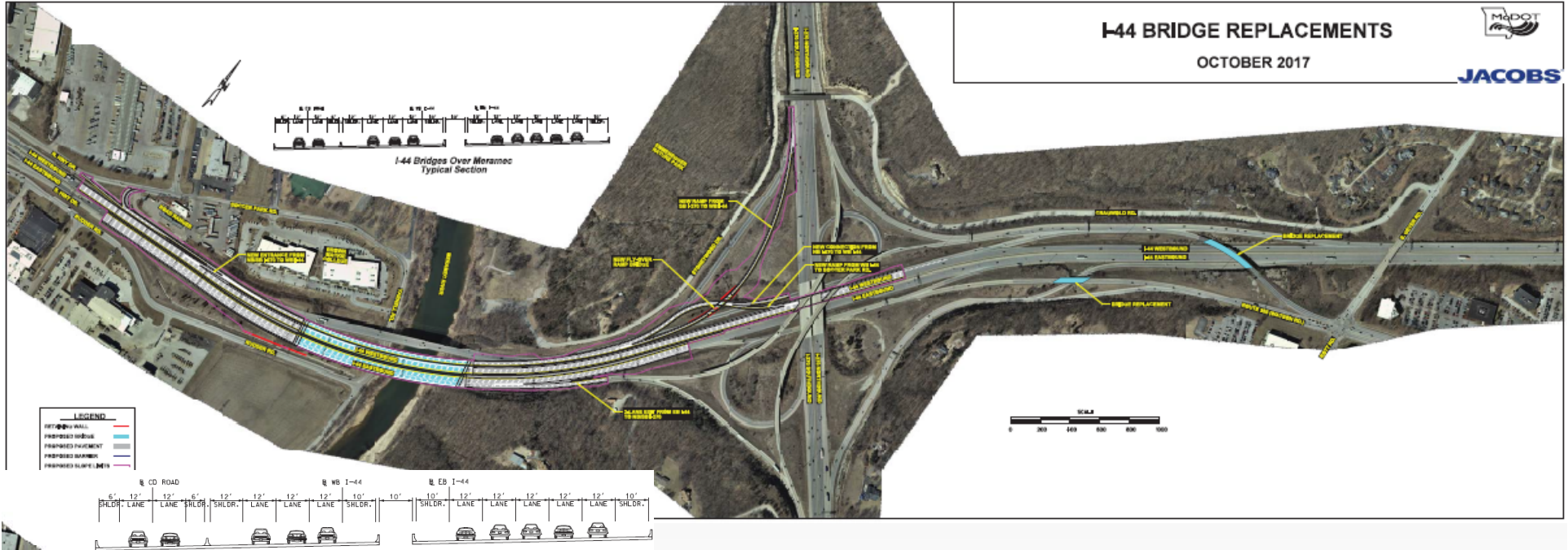


I-44 BRIDGE REPLACEMENTS

OCTOBER 2017



JACOBS





Project Area



Route 141 at Vance
Looking North – PM Peak



Forest Ave at Route 141
Looking West – PM Peak



Project Area



Route 141
Looking South
AM Peak



Eastbound I-44 Offramp
Looking Northwest – AM Peak



Project Description



Crash History in Project Limits 2010 to 2014

Roadway	Total Crashes	Rear End Crashes*
Route 141	923	645
I-44	296	123

* Included in total crash number