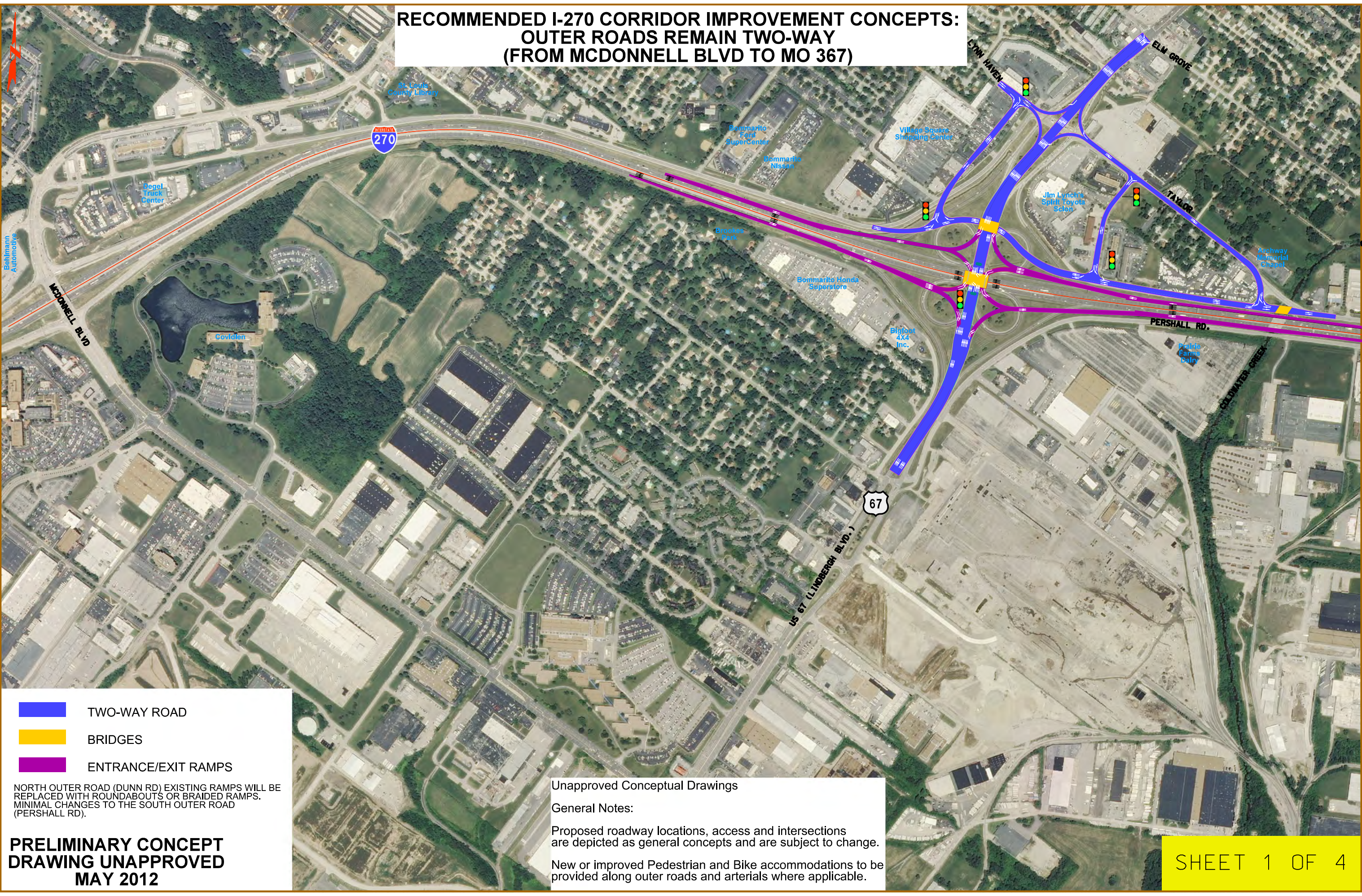


**RECOMMENDED I-270 CORRIDOR IMPROVEMENT CONCEPTS:
OUTER ROADS REMAIN TWO-WAY
(FROM MCDONNELL BLVD TO MO 367)**



- TWO-WAY ROAD
- BRIDGES
- ENTRANCE/EXIT RAMPS

NORTH OUTER ROAD (DUNN RD) EXISTING RAMPS WILL BE REPLACED WITH ROUNDABOUTS OR BRAIDED RAMPS. MINIMAL CHANGES TO THE SOUTH OUTER ROAD (PERSHALL RD).

Unapproved Conceptual Drawings

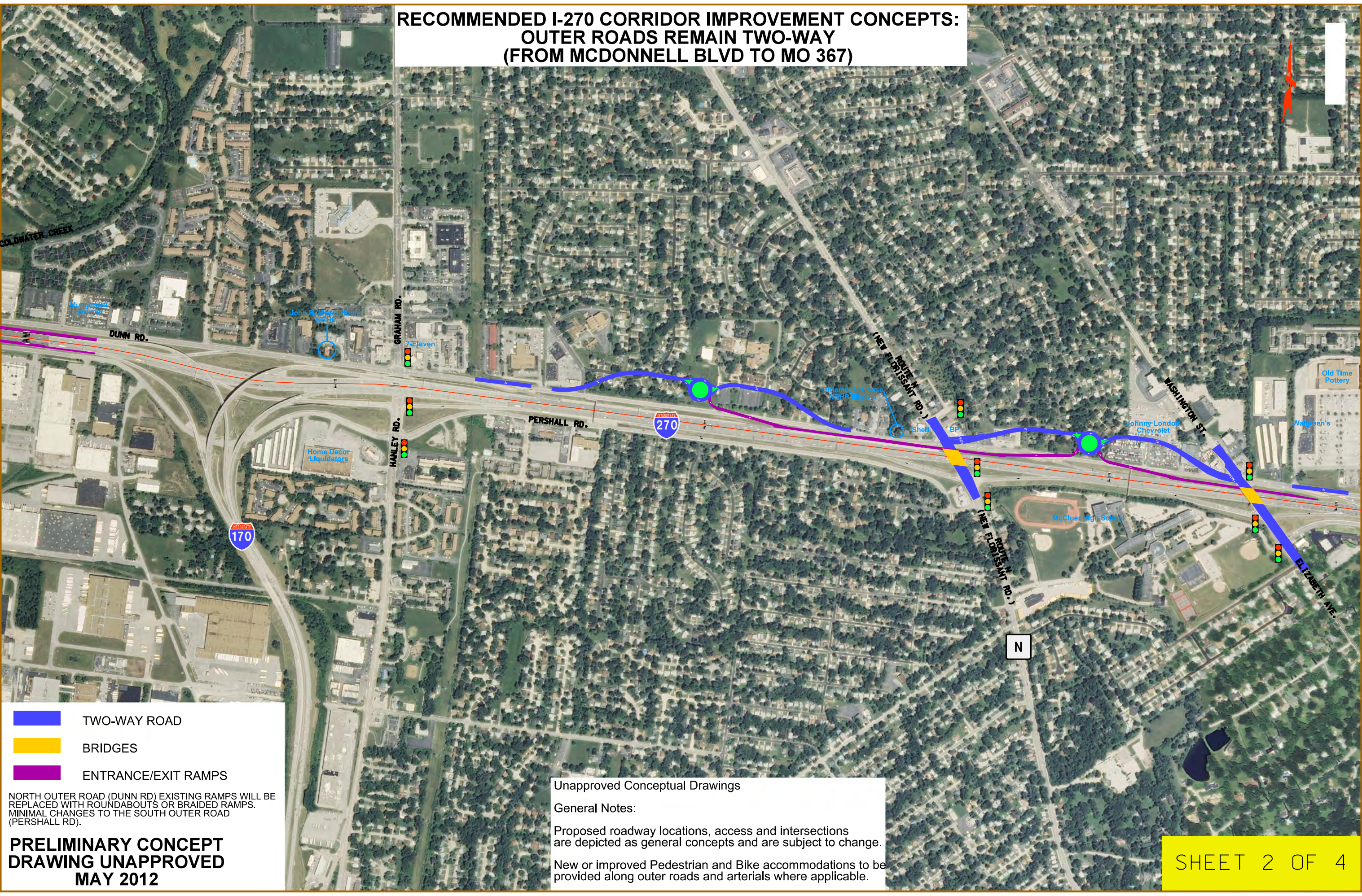
General Notes:

Proposed roadway locations, access and intersections are depicted as general concepts and are subject to change.

New or improved Pedestrian and Bike accommodations to be provided along outer roads and arterials where applicable.

**PRELIMINARY CONCEPT
DRAWING UNAPPROVED
MAY 2012**

**RECOMMENDED I-270 CORRIDOR IMPROVEMENT CONCEPTS:
OUTER ROADS REMAIN TWO-WAY
(FROM MCDONNELL BLVD TO MO 367)**



- TWO-WAY ROAD
- BRIDGES
- ENTRANCE/EXIT RAMP

NORTH OUTER ROAD (DUNN RD) EXISTING RAMPS WILL BE REPLACED WITH ROUNDABOUTS OR BRAIDED RAMPS. MINIMAL CHANGES TO THE SOUTH OUTER ROAD (PERSHALL RD).

**PRELIMINARY CONCEPT
DRAWING UNAPPROVED
MAY 2012**

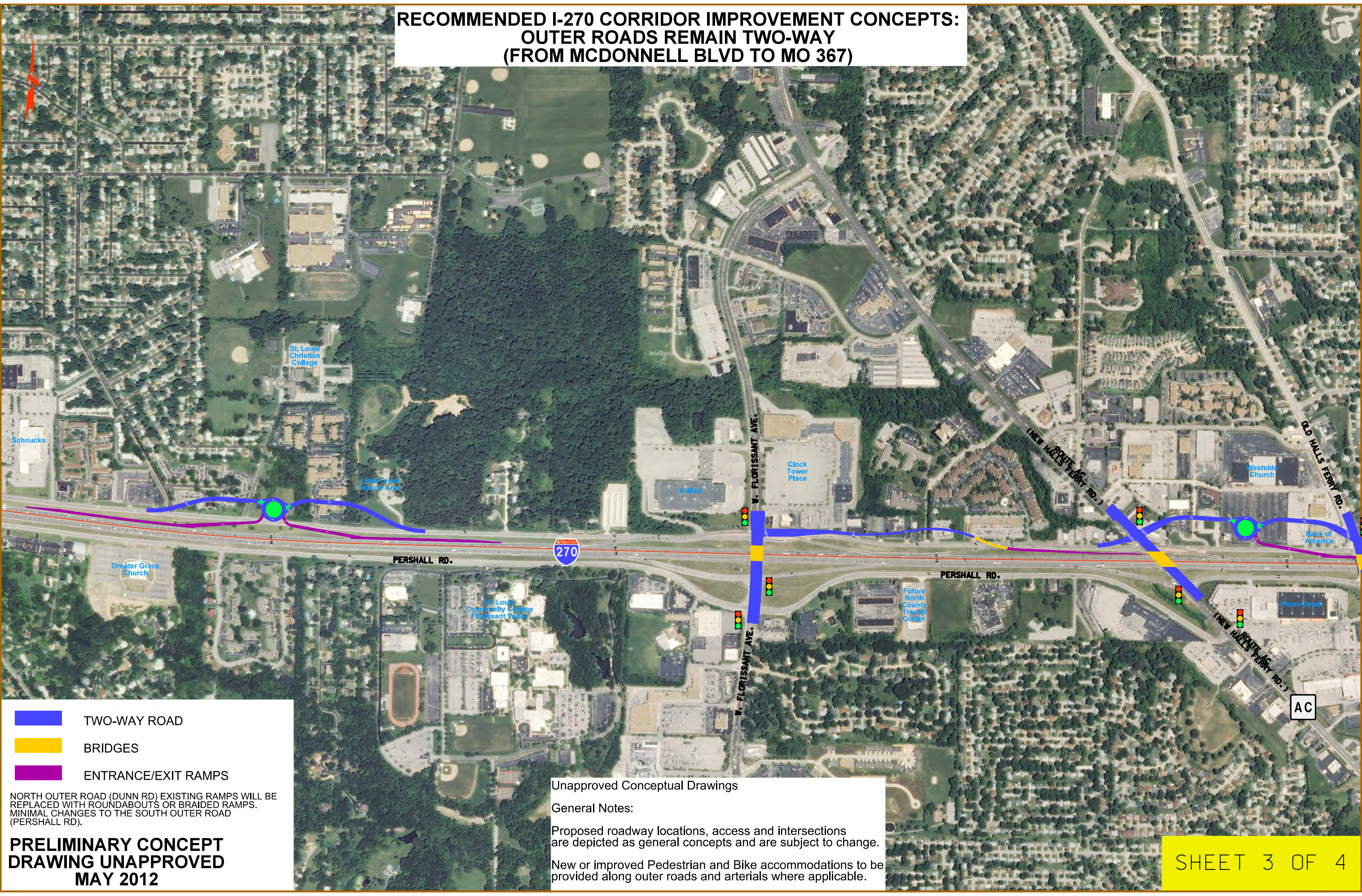
Unapproved Conceptual Drawings

General Notes:

Proposed roadway locations, access and intersections are depicted as general concepts and are subject to change.

New or improved Pedestrian and Bike accommodations to be provided along outer roads and arterials where applicable.

**RECOMMENDED I-270 CORRIDOR IMPROVEMENT CONCEPTS:
OUTER ROADS REMAIN TWO-WAY
(FROM MCDONNELL BLVD TO MO 367)**



- TWO-WAY ROAD
- BRIDGES
- ENTRANCE/EXIT RAMP

NORTH OUTER ROAD (DUNN RD) EXISTING RAMPS WILL BE REPLACED WITH ROUNDABOUTS OR BRAIDED RAMPS. MINIMAL CHANGES TO THE SOUTH OUTER ROAD (PERSHALL RD).

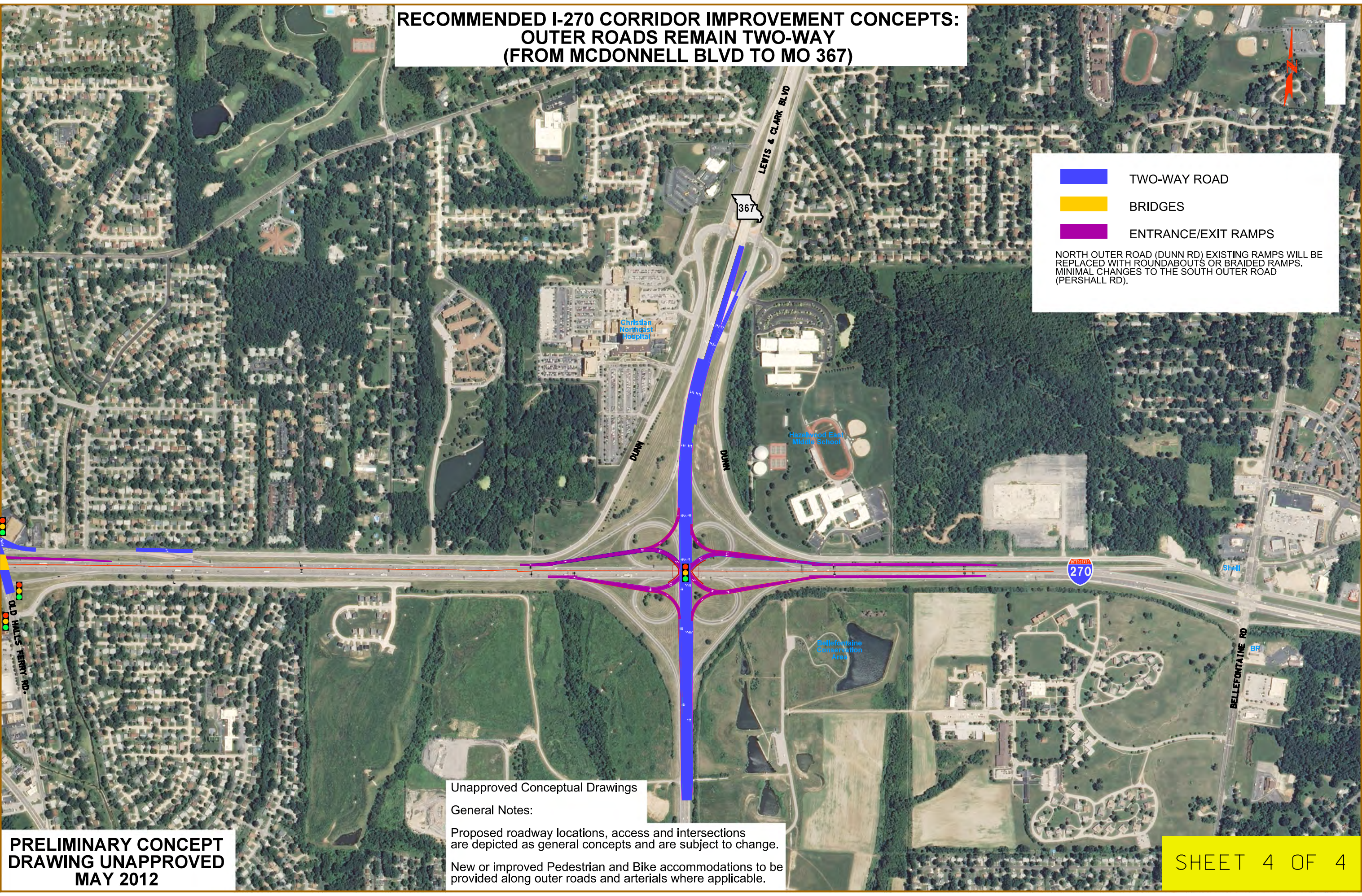
**PRELIMINARY CONCEPT
DRAWING UNAPPROVED
MAY 2012**

Unapproved Conceptual Drawings
General Notes:
Proposed roadway locations, access and intersections are depicted as general concepts and are subject to change.
New or improved Pedestrian and Bike accommodations to be provided along outer roads and arterials where applicable.

**RECOMMENDED I-270 CORRIDOR IMPROVEMENT CONCEPTS:
OUTER ROADS REMAIN TWO-WAY
(FROM MCDONNELL BLVD TO MO 367)**

TWO-WAY ROAD
BRIDGES
ENTRANCE/EXIT RAMP

NORTH OUTER ROAD (DUNN RD) EXISTING RAMPS WILL BE REPLACED WITH ROUNDABOUTS OR BRAIDED RAMPS. MINIMAL CHANGES TO THE SOUTH OUTER ROAD (PERSHALL RD).



Unapproved Conceptual Drawings

General Notes:

Proposed roadway locations, access and intersections are depicted as general concepts and are subject to change.

New or improved Pedestrian and Bike accommodations to be provided along outer roads and arterials where applicable.

**PRELIMINARY CONCEPT
DRAWING UNAPPROVED
MAY 2012**

SHEET 4 OF 4