

Along Missouri Highways



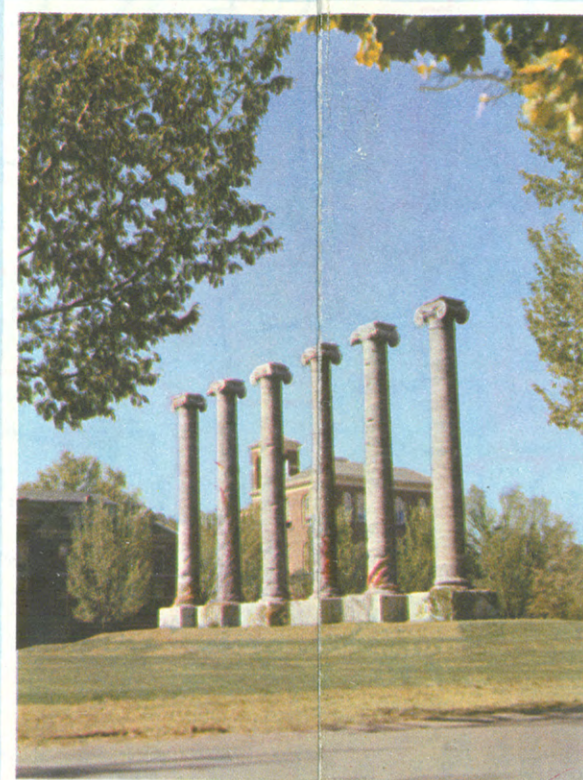
North of St. Joseph on US Routes 71 and 275



Near New Cambria on US Route 36



Near Marshall Junction on US Route 40



The Columns, University of Missouri, Columbia



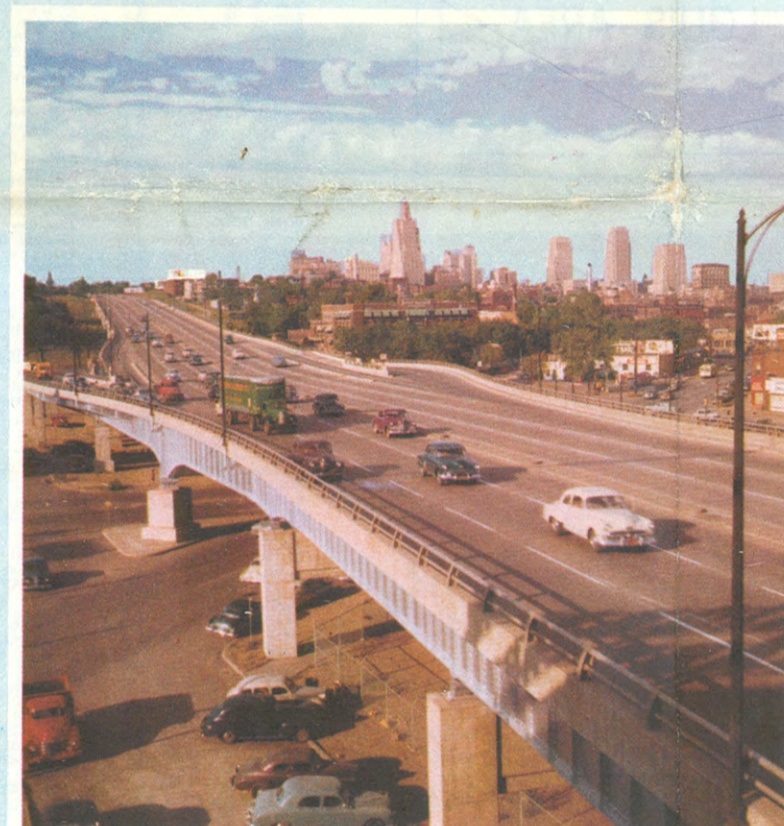
US Route 40 at Warrenton



Mississippi River near Clarksville, Mo. Route 79



Near Hannibal on US Route 61



Southwest Trafficway in Kansas City



Highway Exhibit at State Fair at Sedalia, US Routes 50 and 65



Capitol Building, Jefferson City, on US Routes 50, 54, and 63



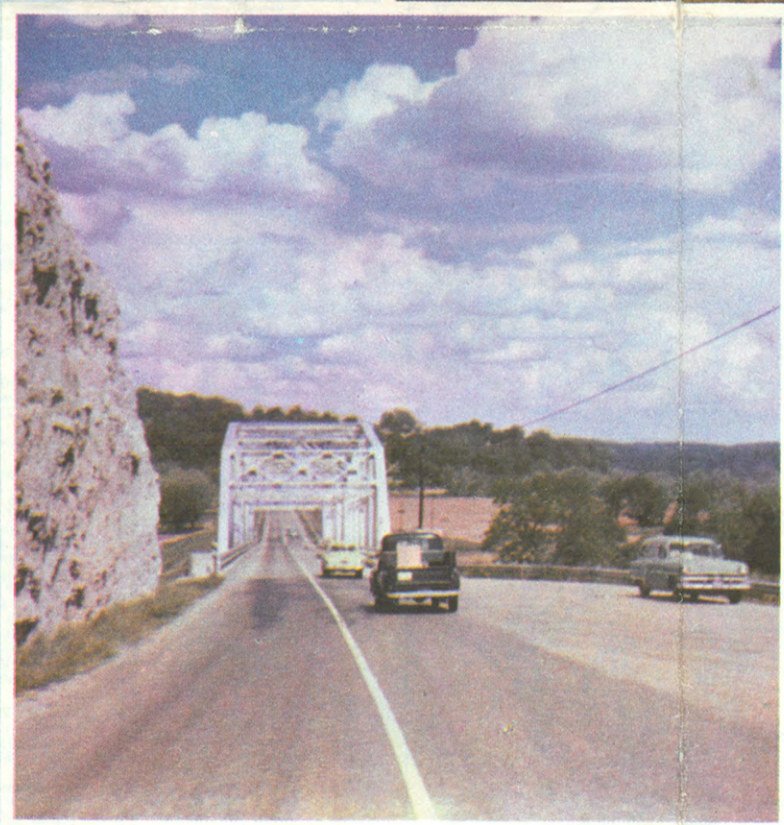
Divided pavement near St. Clair, US Route 66



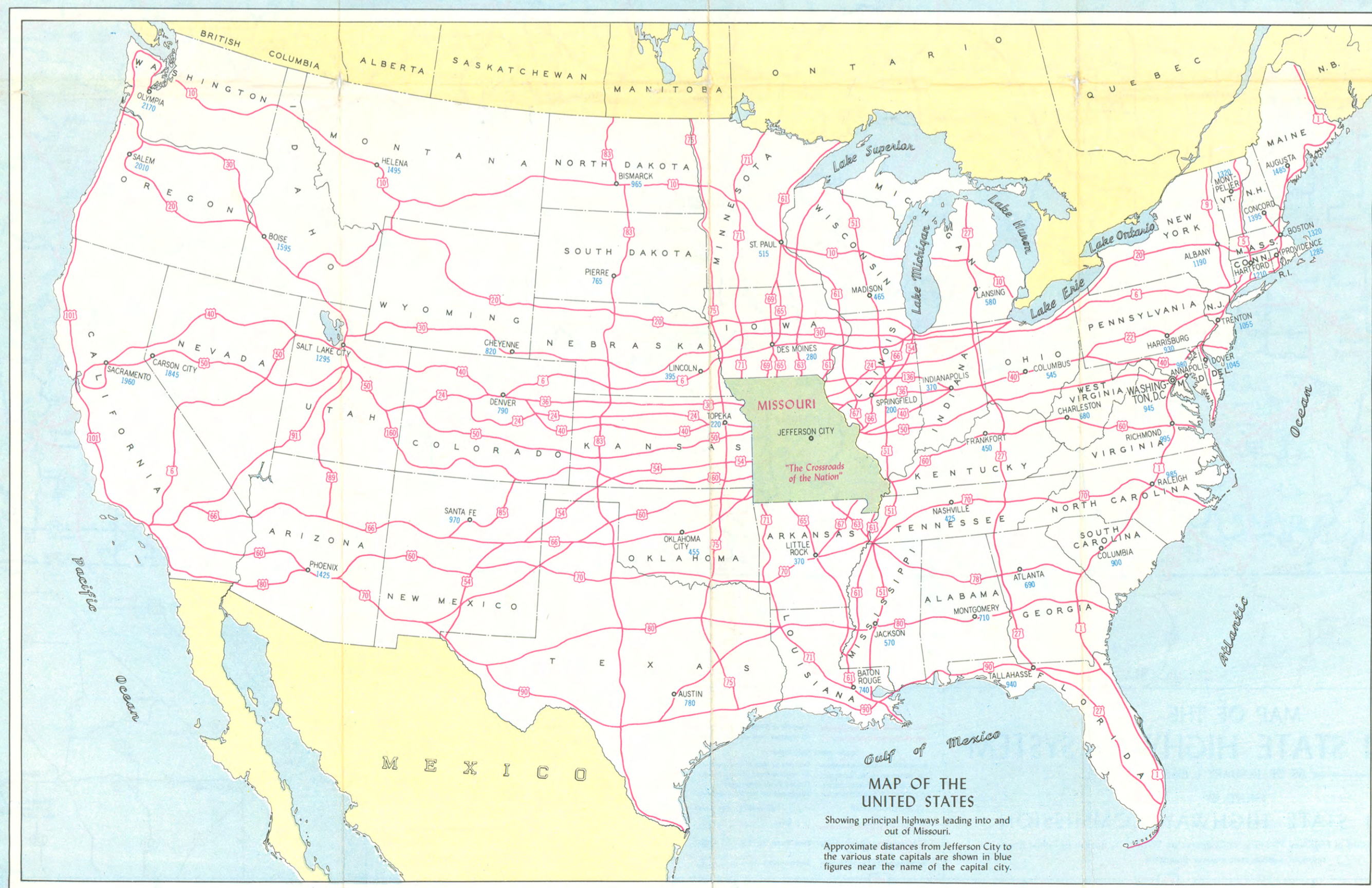
West of St. Louis on US Routes 50 and 66



Lake of the Ozarks on US Route 54



Near Forsyth on Mo. Route 76



MAINTAINED BY THE MISSOURI STATE HIGHWAY COMMISSION

ROUTE	NAME	LOCATION
Mo. 5	Casad	7 mi. N. of Unionville
Mo. 6 (City)	Hurricane Deck	21 mi. S. of Versailles
Mo. 13	Tom & Country	At Kirksville
Mo. 13	Courts Creek	27 mi. W. of Steelville
Mo. 19	Taylor	5 mi. N. of Richmond
Mo. 19	Briggs	27 mi. W. of West Plains
Mo. 19-US 54	John Scott Corner	5 mi. S. of Ladonia
Mo. 19	Fine Valley	1 mi. S. of Hermann
Mo. 19	River View	5 mi. S. of Cuba
Mo. 19	Mapan	3 mi. S. of Eminence
Mo. 21	Tip Top	3 1/2 mi. S. of Arcadia
US 24	Skyline	3 mi. N. of Ellington
US 24	Backland	2 mi. W. of Waverly
US 24	Mary Lowry	3 mi. W. of Huntsville
US 24	Huttell	3 mi. E. of Moberly
US 24-61	Palmyra	4 mi. S. of Palmyra
Mo. 24	Old Whitewater	1 1/2 mi. S. of Delta
US 36	Shiloh	2 1/2 mi. W. of Pickmont
US 36	Spillway	1 mi. W. of Hamilton
US 40	Theodore Cary	2 mi. W. of New Cambria
US 40	Griffin	8 1/2 mi. E. of Marshall Jct.
US 40	Old Fort of 1812	2 mi. E. of Sedalia
US 40	Hauschild	3 mi. E. of Columbia
US 40	A. W. "Boss" Gosham	4 mi. E. of Warrenton
US 40	Murray Carleton	4 mi. E. of Warrenton
US 50	Little Blue Valley	2 mi. E. of Knobtown
US 50	Bradford	2 1/2 mi. W. of Sedalia
US 50	Brownfield	2 mi. E. of Ottaville
US 50	North Ten Mile Drive	2 1/2 mi. W. of Jefferson City
US 50	South Ten Mile Drive	3 mi. W. of Jefferson City
US 50	Gasconade Ridge	11 mi. E. of Jefferson City
US 50-66	Jensen's Point	14 mi. E. of Pacific
Mo. 52	Hudson	3 mi. W. of Appleton City
US 54	J. B. Davis	10 mi. E. of Mexico
US 54	Hicom	2 mi. E. of Wheatland
US 54-Mo. 73	Diendorf	3 mi. E. of Marks Creek
US 54	Lake of the Ozarks	14 mi. S. of Arrowhead
US 54	Lake View	1 1/2 mi. W. of Bagwell Dam
US 54-Mo. 19	John Scott Corner	13 mi. E. of Mexico
US 59	Belghaus	2 1/2 mi. N. of Billings
US 59	Sandero	6 mi. W. of Springfield
US 60	Gold Star Memorial	1 mi. E. of Seymour
US 61-24	Palmyra	4 mi. S. of Palmyra
US 61-67	Austin-Pittsair	1 mi. N. of Festus
US 61	Grindstone Hill	6 mi. S. of Crystal City
US 61	Fourche A Du Clos	1 mi. N. of Bloomdale
US 61	Wells	3 1/2 mi. N. of Jackson
US 61	El Camino	3 1/2 mi. S. of Jackson
US 61	Weslind	3 1/2 mi. N. of Cape Girardeau
US 61	Feller	4 mi. N. of Benton
US 61	Portage Bay	1 mi. S. of Portageville
US 61-136	Rupert Hughes	Junction at Lancaster
US 63	Lake Side	8 1/2 mi. N. of Kirksville
US 63	Butler-Franks	2 1/2 mi. S. of Macon
US 63	Shores	1 mi. S. of Clark
US 63	Spring Creek Gap	3 1/2 mi. N. of Victor
US 63	Fair-Atty	1 1/2 mi. N. of West Plains
US 65	Petta-Drake	1 mi. S. of Warsaw
US 65	Chula Vista	3 mi. S. of Branson
US 66	Spring River	1 mi. E. of Carthage
US 66	Braxton	8 mi. W. of Springfield
US 66	Twin Oaks	12 mi. W. of Lebanon
US 66	Egan	13 mi. E. of Lebanon
US 66	Oak Grove	3 mi. E. of Cuba
US 66-50	Jensen's Point	14 mi. E. of Pacific
US 67-61	Austin-Pittsair	1 mi. N. of Festus
US 67	Cherokee Trail	10 mi. S. of Farmington
US 67	Mira LaMotte	1 mi. S. of Farmington
US 69	Green	2 mi. S. of Pattonsburg
Mo. 70	Kemper Creek	3 1/2 mi. W. of Fredericktown
US 71	US 71	1 mi. N. of Maryville
US 71	Mount Valley	2 mi. N. of Archie
US 71	Hawthorne	14 mi. S. of Jct. 60, near Neesho
Mo. 73-US 54	Indian Creek	1 mi. S. of Lagans
Mo. 76	Emery Creek	3 mi. E. of Jct. US 65
Mo. 76	Lake Taneycomo	2 1/2 mi. W. of Fossil
Mo. 76	Swan Creek	In Forsyth
Mo. 79	Clinton Spring	2 1/2 mi. N. of Louisiana
Mo. 80	Pinnacle	North edge of Clarksville
Mo. 80	Sac Osage	2 mi. S. of Osceola
Mo. 86	Table Rock	At Wala
Mo. 103	Les Brosses	2 1/2 mi. W. of US 65
US 136-63	Rupert Hughes	Junction at Lancaster
US 160	River Drive	3 1/2 mi. S. of Branson
US 160	Inspiration Point	7 mi. N.W. of Branson
US 160	Davis	5 mi. W. of Lurie
US 275	Mo-Ark Broadview	6 mi. N.W. of Savannah

STATE HIGHWAY COMMISSION

MAIN OFFICE
Jefferson City

Harris D. Rodgers..... Chairman	Benton
J. G. Morgan..... Vice-Chairman	Unionville
A. D. Sappington..... Member	Columbio
M. C. Matthews..... Member	Hillsboro
Ed L. Clark..... Ex-Officio	Rolla
Rex M. Whitton..... Chief Engineer	Jefferson City
Robert L. Hydar..... Chief Counsel	Jefferson City
John H. Acuff..... Secretary	Jefferson City

DISTRICT OFFICES

1 St. Joseph..... L. F. Beckett
2 Macon..... B. F. Leslie
3 Hannibal..... F. L. Stuckey
4 Kansas City..... L. M. Hoskins
5 Jefferson City..... V. B. Soville
6 Kirkswood..... R. W. Hodson
7 Joplin..... O. L. Steele
8 Springfield..... C. C. Travis
9 Willow Springs..... M. J. Snider
10 Sikeston..... M. S. Gwinn

STATE HIGHWAY PATROL

GENERAL HEADQUARTERS
Jefferson City

COL. HUGH H. WAGGONER, Superintendent

TROOP HEADQUARTERS	OFFICER IN CHARGE
Troop A, Lees Summit	Capt. O. L. Viets
Troop B, Macon	Capt. G. W. Pate
Troop C, Kirkswood	Capt. C. R. Oliver
Troop D, Springfield	Capt. G. B. Kohler
Troop E, Poplar Bluff	Capt. O. L. Wollis
Troop F, Jefferson City	Capt. C. M. Parker
Troop G, Willow Springs	Capt. J. A. Tandy
Troop H, St. Joseph	Capt. E. I. Davis
Troop I, Rolla	Capt. L. B. Howard

HIGHWAY INFORMATION CENTERS

For detailed information concerning the condition of highways, call or see the nearest highway department office or highway patrol troop headquarters.

HIGHWAY DEPARTMENT OFFICES

City and Location	Telephone
Jefferson City, Highway Building	6-3121

DISTRICT OFFICES

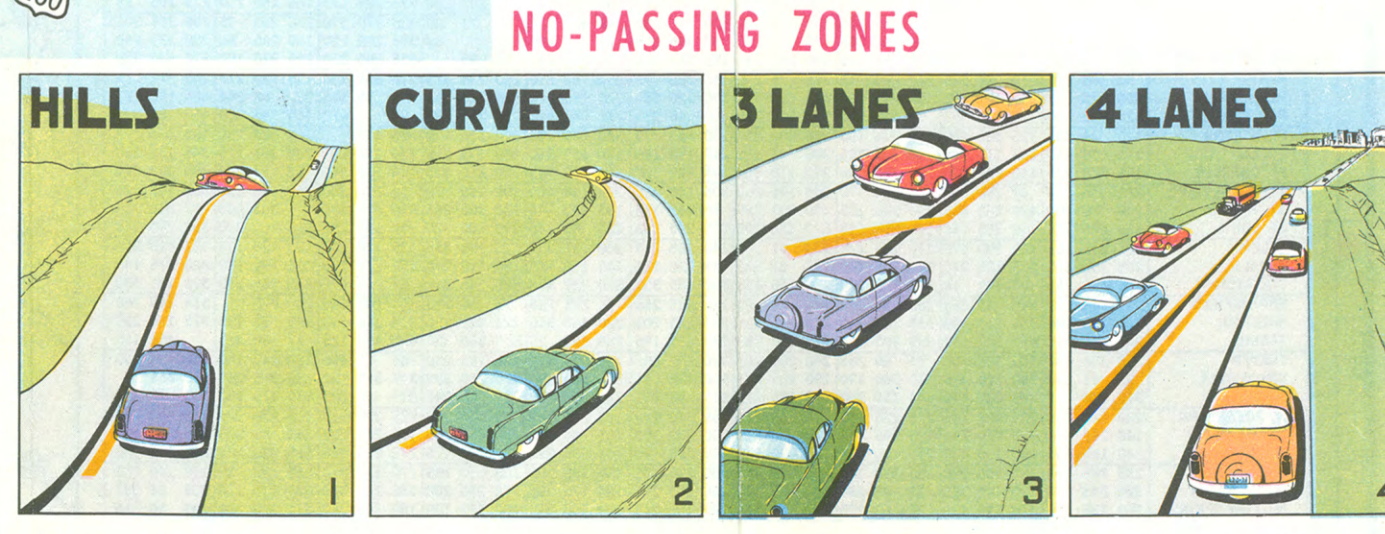
Hannibal, McMasters Avenue	2764
Jefferson City, US Rte. 50 West	6-6135
Joplin, 410 Range Line Road, US Rte. 71	Mayfair 3-5794
Kansas City, 517 East 31st Street	Linwood 7105
Kirkswood, 329 South Kirkswood Road	Taylor 1-0230
Macon, US Rte. 63	2152
St. Joseph, North Jct. US Res. 71 & 169	2-3294
Sikeston, US Rte. 61 North of US Rte. 60	170
Willow Springs, US Rte. 60 North	4-2544

HIGHWAY PATROL TROOP HEADQUARTERS

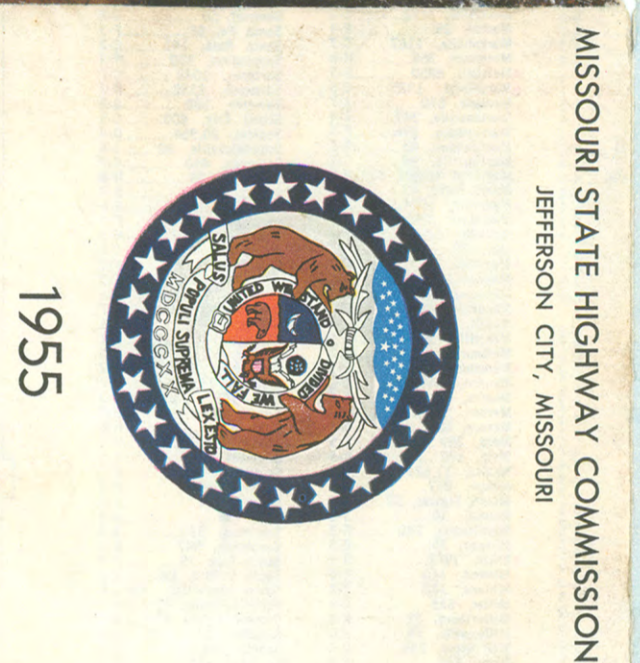
Jefferson City, High & Broadway	6-7141
---------------------------------	--------

TROOP HEADQUARTERS

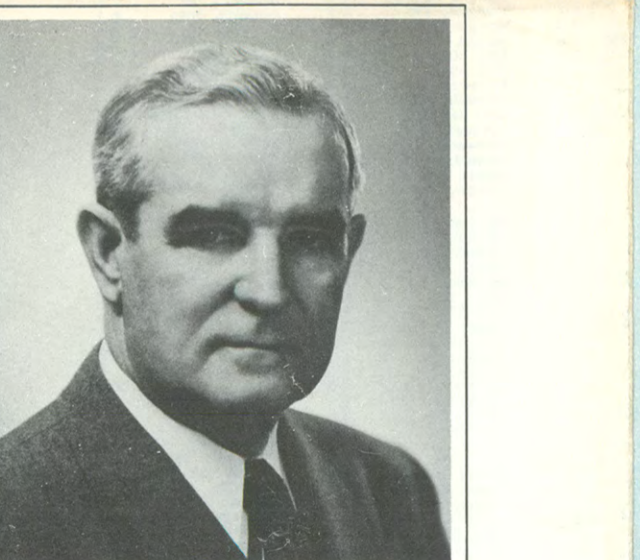
Jefferson City, US Rte. 50 East	6-7141
Kirkswood, US Rte. 40 & Ballas Rd.	Hempstead 2-2661
Lees Summit, US Rte. 50 East	407
Macon, US Rte. 56 West of US Rte. 63	2132
Poplar Bluff, US Rte. 67 South	3522
Rolla, US Rte. 66	1500
St. Joseph, North Jct. US Res. 71 & 169	3-0291
Springfield, US Res. 60 & 166 West	4-1525
Willow Springs, US Rte. 60 Northwest	110



Missouri
1955 OFFICIAL HIGHWAY MAP
PUBLISHED BY THE MISSOURI STATE HIGHWAY COMMISSION
FOR FREE DISTRIBUTION



To



TO THE TRAVELER ON MISSOURI'S HIGHWAYS

The richness and variety of the scenic wonders and of the natural resources of Missouri, as revealed in scenes presented in this Official State Highway Map for 1955, will remind you of the beauty and grandeur of your state. Visitors from all over the world will find in these scenes incentive to see more of and know Missouri better.

To such visitors, I extend a most cordial welcome to Missouri, as you travel on our highways through our fertile farmlands, by our lakes and streams and rivers, or through the famous Ozark and Blue Ridge mountains. As you travel, you will see the beauty and grandeur of your state. Visitors from all over the world will find in these scenes incentive to see more of and know Missouri better.

Your attention is invited to these things with the hope that your visit here will be one of pleasure and profit. We invite you to stop with us on the way to your rest. And when you leave our borders, remember Missouri, and come to see us again, soon!

Phil M. Donnelly
GOVERNOR OF MISSOURI

