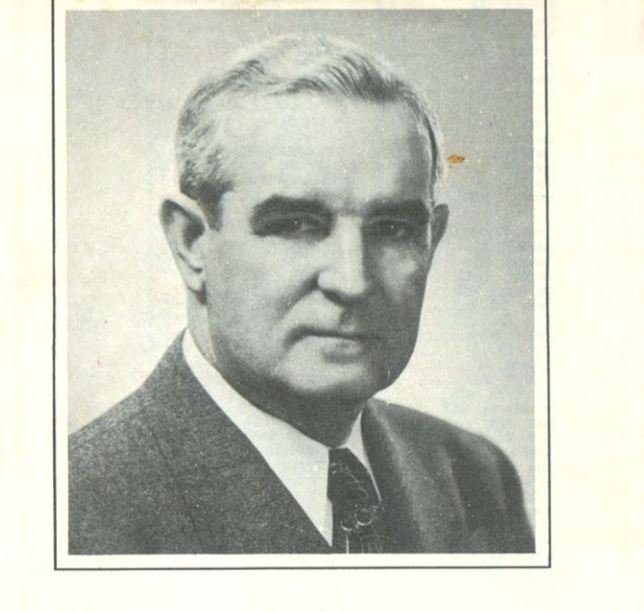


WELCOME TO MISSOURI

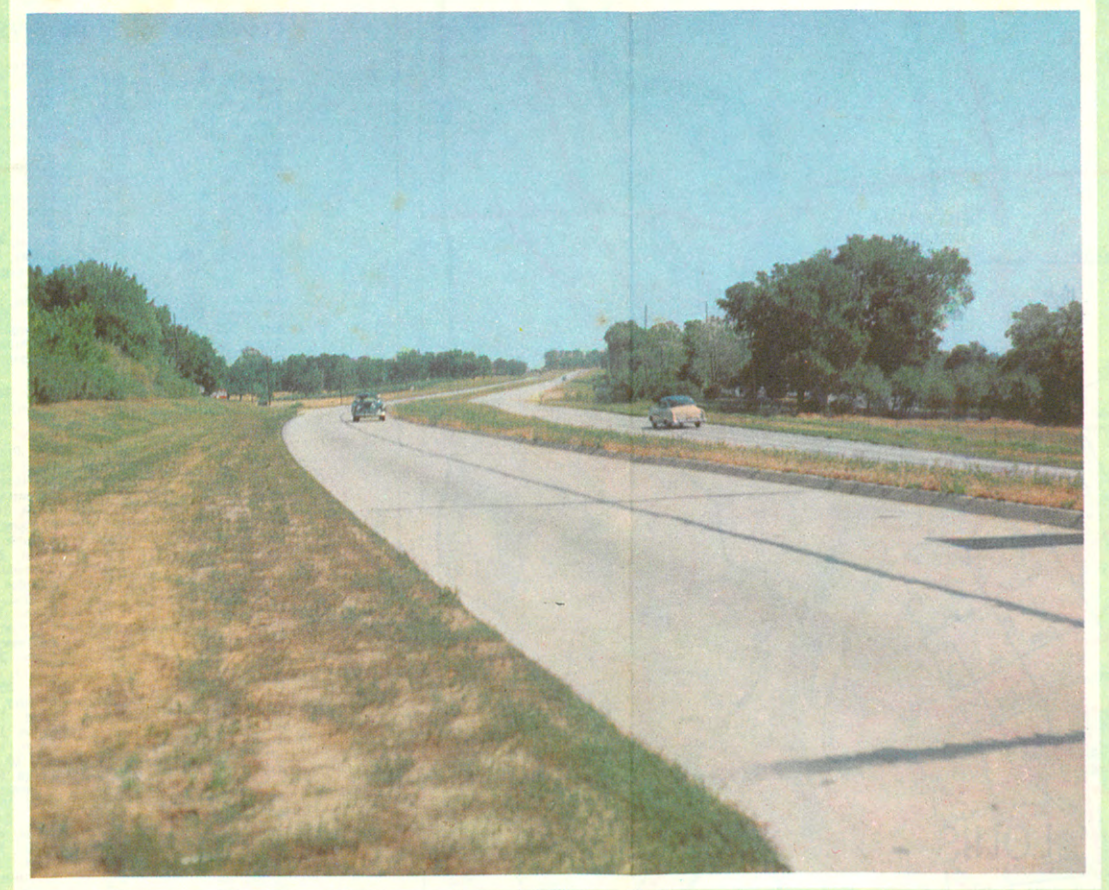


MISSOURI STATE HIGHWAY COMMISSION
JEFFERSON CITY, MISSOURI

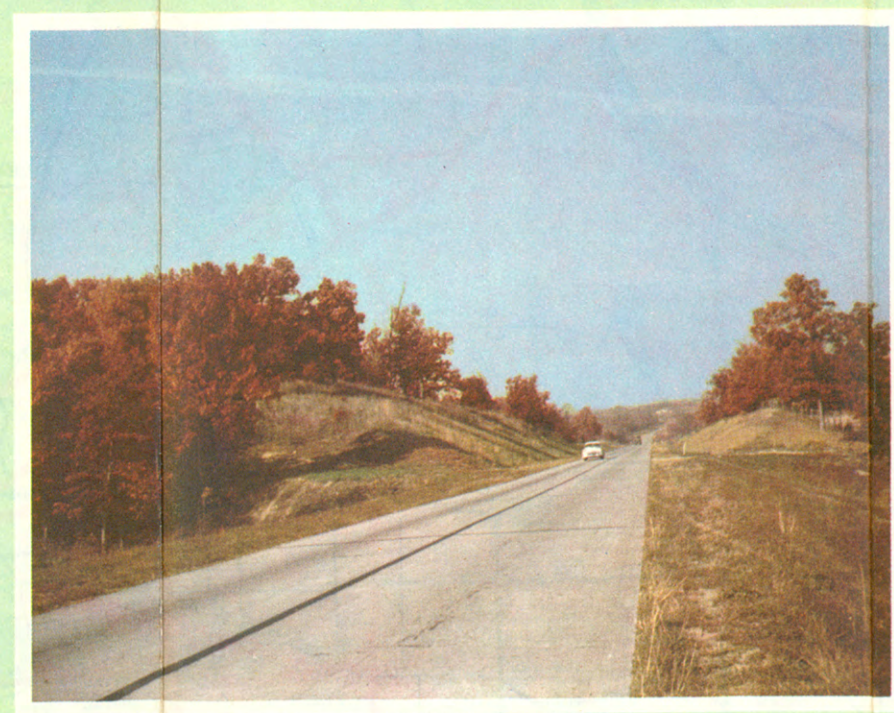
Official Highway Map 1956
Official Flower
Official Fruit
Official Bird
Official Tree
Official Fish
Official Insect
Official Mammal
Official Reptile
Official Amphibian
Official Bird of Prey
Official Mollusk
Official Invertebrate
Official Plant
Official Tree
Official Flower
Official Fruit
Official Bird
Official Tree
Official Fish
Official Insect
Official Mammal
Official Reptile
Official Amphibian
Official Bird of Prey
Official Mollusk
Official Invertebrate
Official Plant



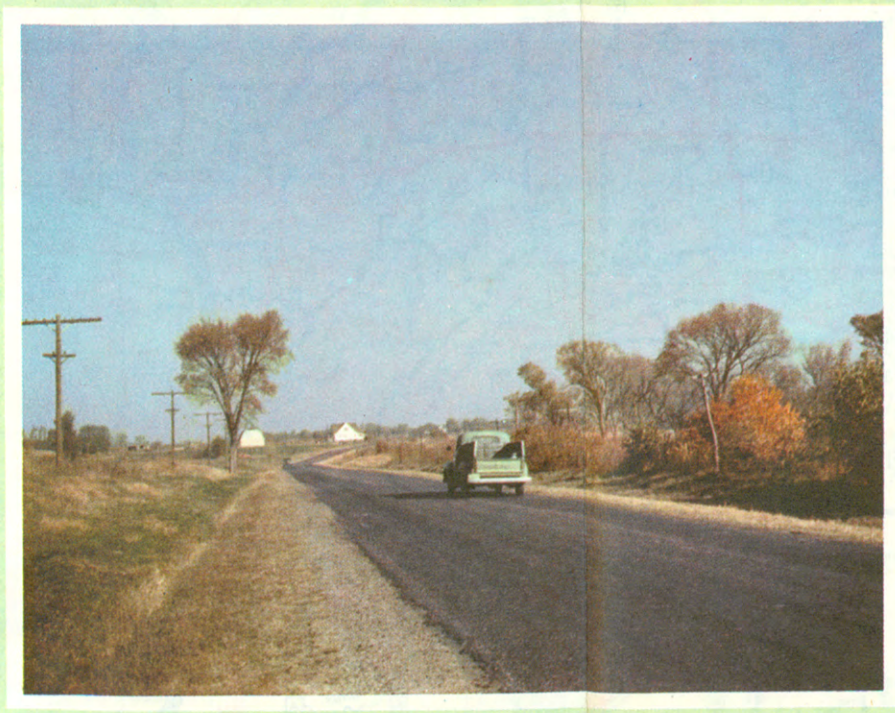
TO THE TRAVELER ON MISSOURI'S HIGHWAYS:
The scenes presented in this official State Highway Map for 1956 will serve as a reminder to Missourians of the richness and beauty of the scenic wonders and of the natural resources of our State. For the visitors to Missouri they will serve as an incentive to see more of the State and learn more about its friendly people.
To such visitors, on behalf of all of our citizens, I extend a most cordial welcome. As you travel on our highways, through our fertile farmlands, by our lakes and streams and rivers, or through the famous Ozarks, note the infinite abundance with which Nature has blessed Missouri. As you visit our great cities you will find the spirit of their industries and centers of commerce, their business and public monuments, their art and scientific museums, the evidence of the unselfish and progressive spirit of our people. Our centers of industry, spread throughout the world, attest to the culture of this great and ancient State.
Your attention is limited to these things with the hope that your visit here will prove pleasant and profitable. We invite you to stay with us as long as you can. And when you leave our borders, remember Missouri, and come to see us again, soon.
John M. Danahy
GOVERNOR OF MISSOURI



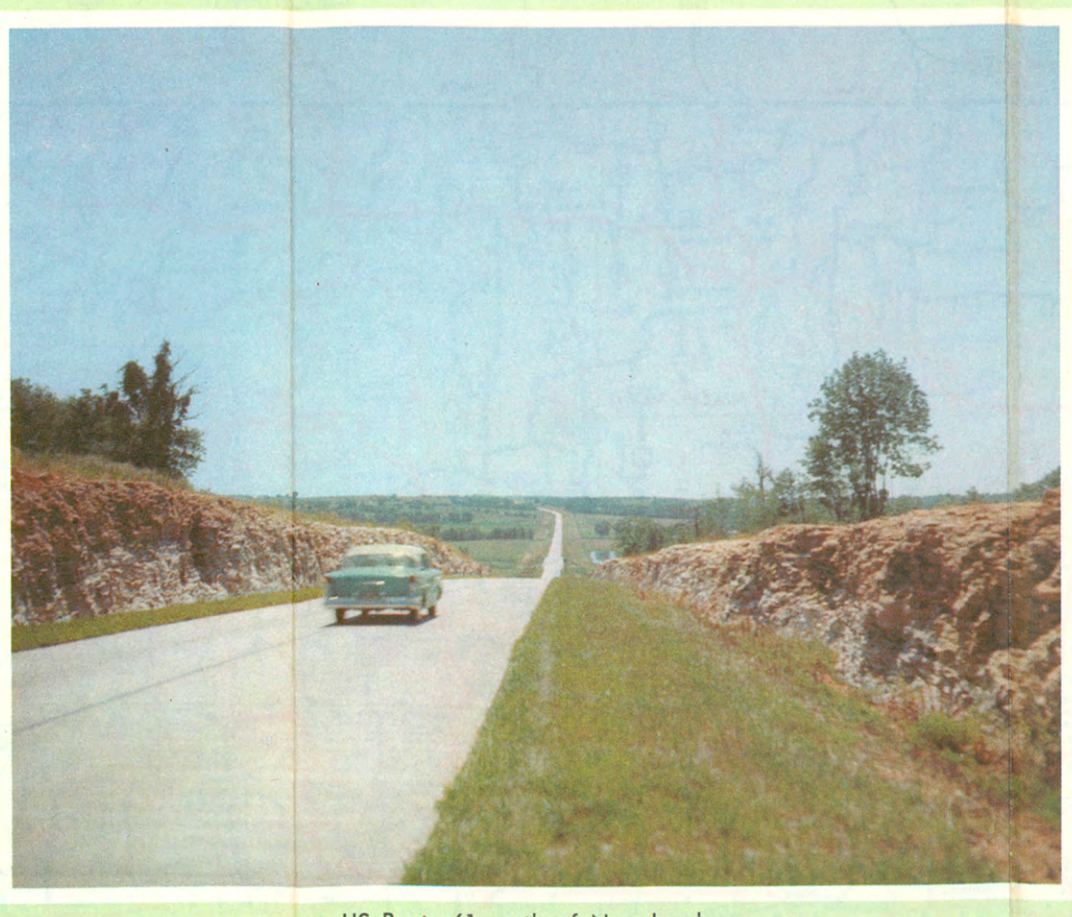
US Routes 71 and 275 north of St. Joseph



US Route 36 in Linn County



Missouri Route 5 in Putnam County



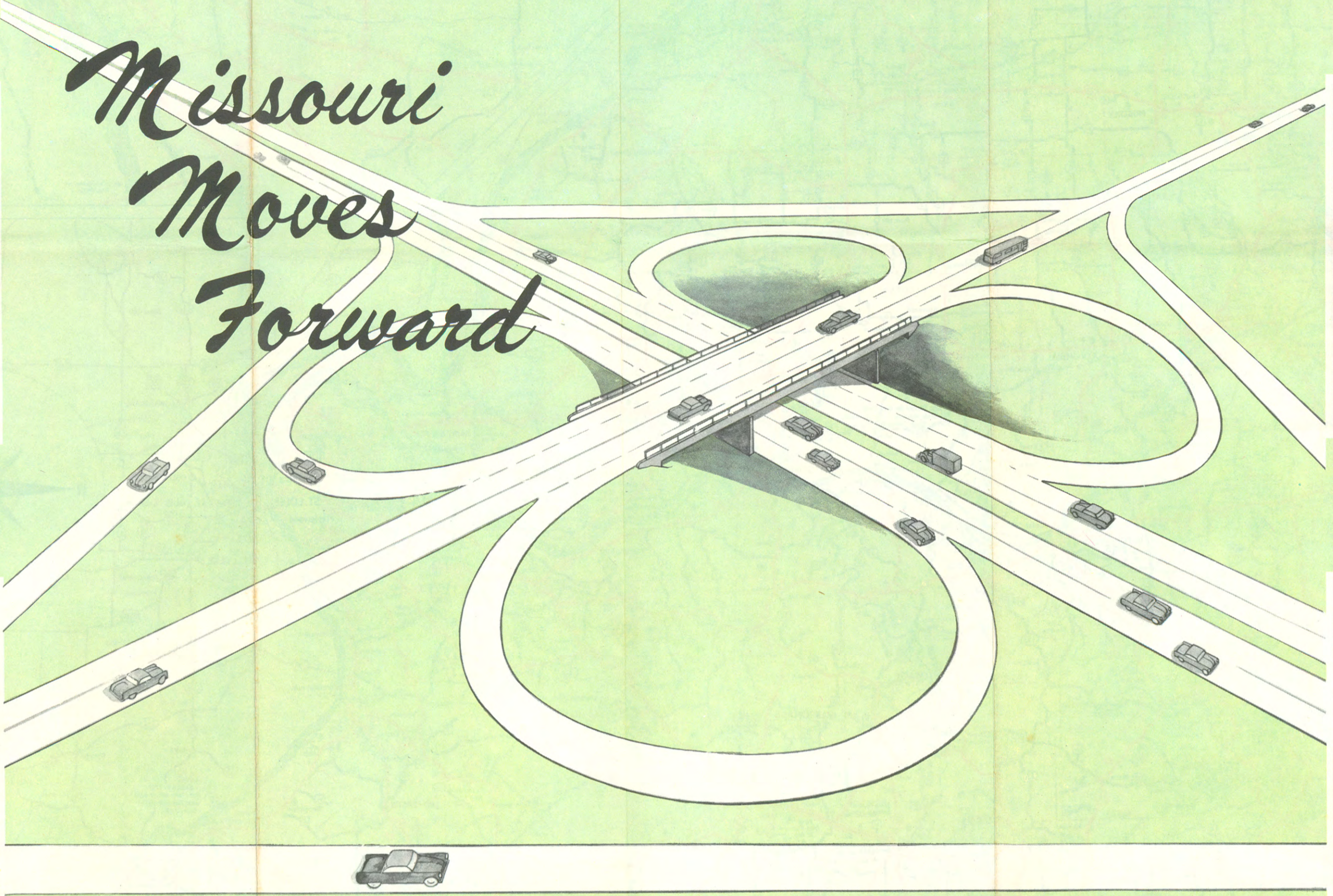
US Route 61 south of New London



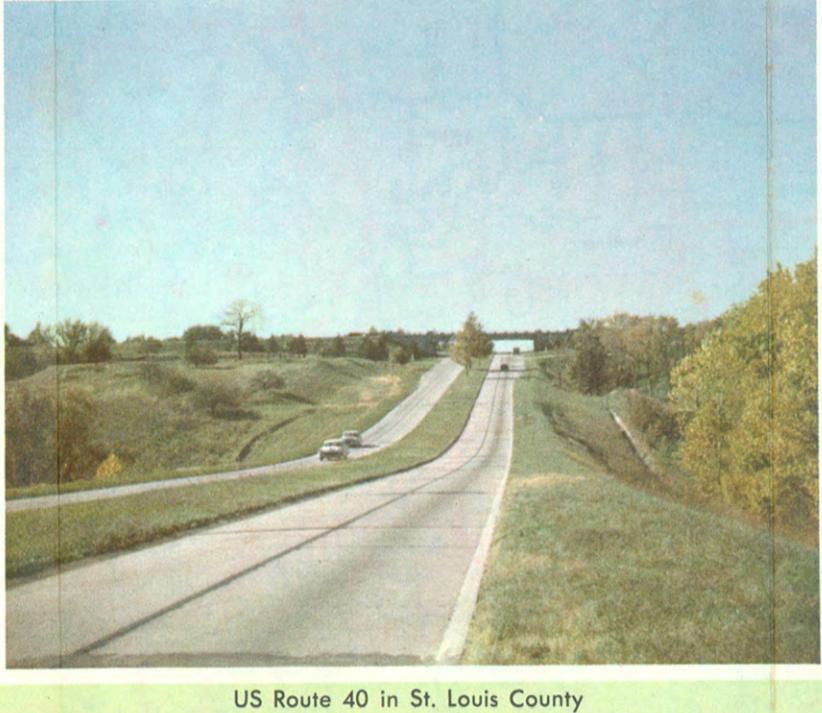
US Route 40 at Route 0, Jackson County



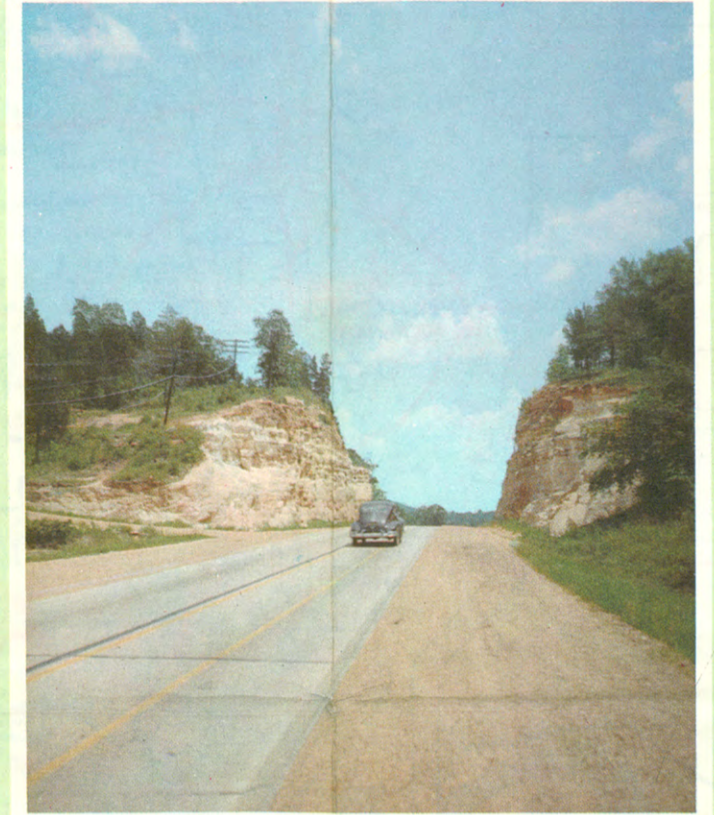
Highway Gardens Exhibit at State Fair, Sedalia



US Route 79 near Clarksville



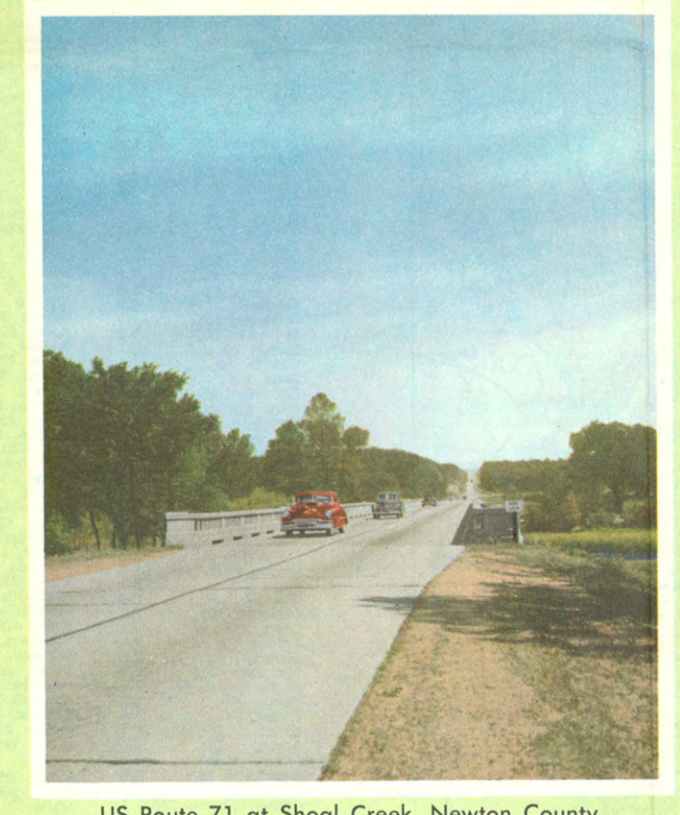
US Route 40 in St. Louis County



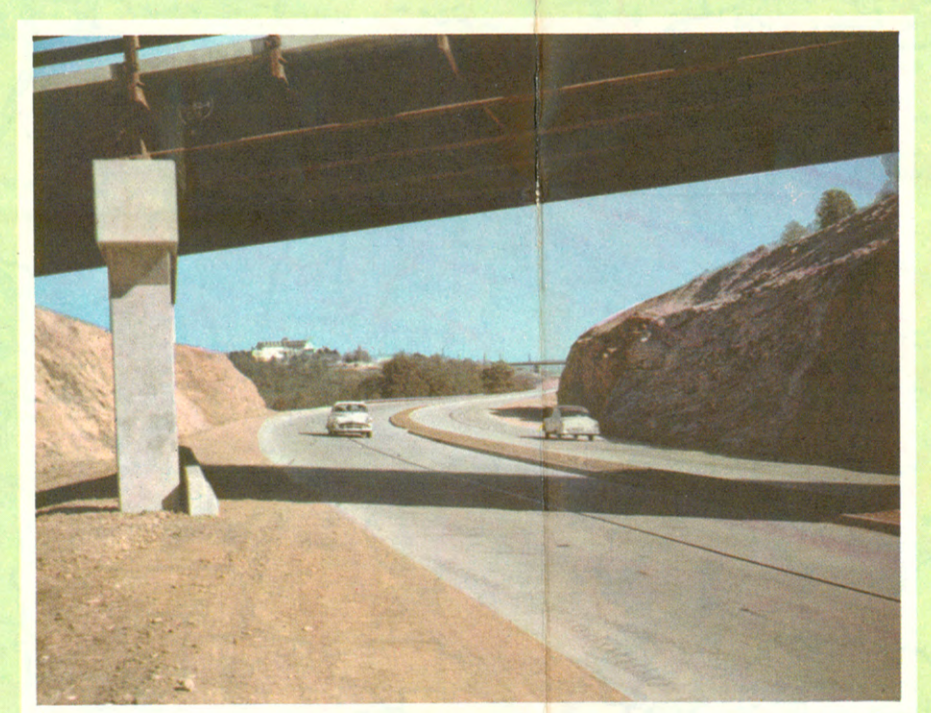
Grindstone Hill on US Route 61



US Route 61 north of Cape Girardeau



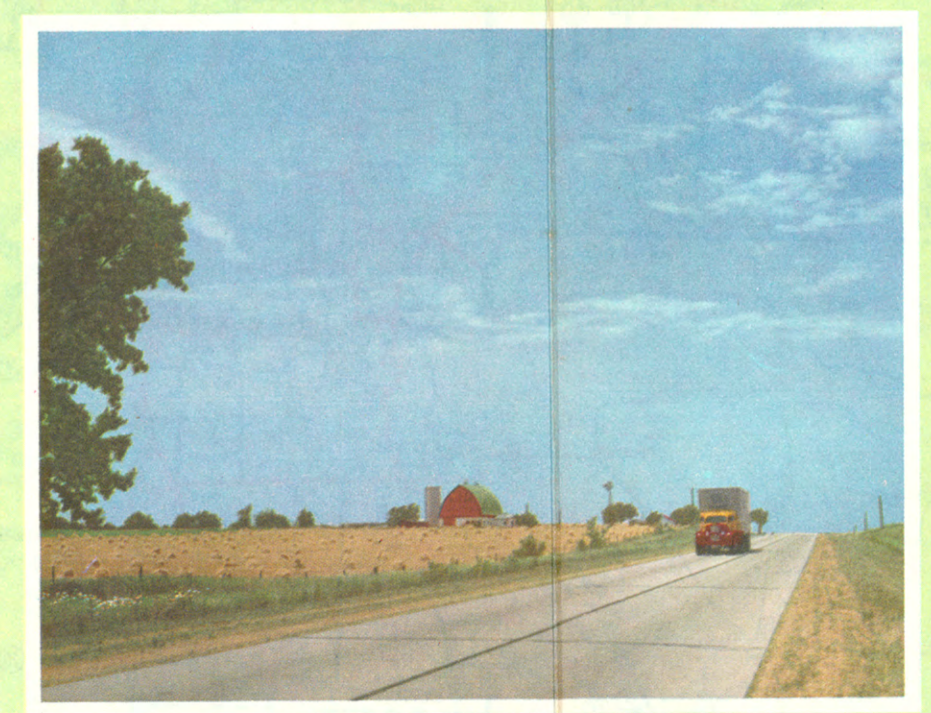
US Route 71 at Shoal Creek, Newton County



US Route 66 near Rolla



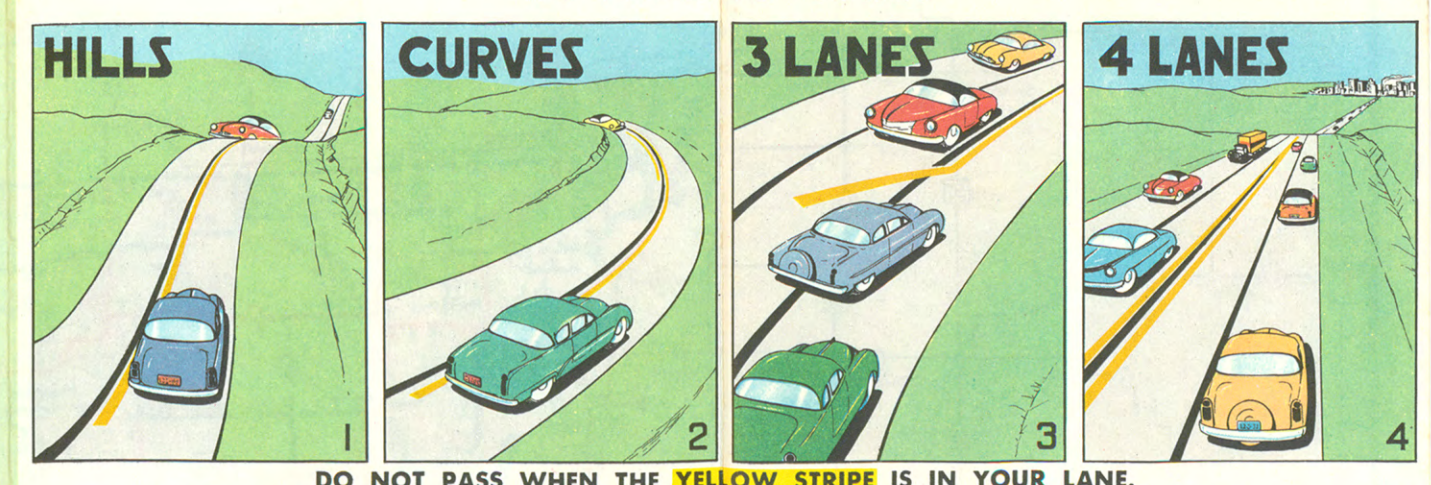
US Route 66 west of Route 47



US Route 166 in Lawrence County



US Route 60 near James River, Greene County



DO NOT PASS WHEN THE YELLOW STRIPE IS IN YOUR LANE. The yellow stripes you find on Missouri highways mark the no-passing zones—stretches of highway where hills or curves make the sight distance ahead so short that it is unsafe to overtake and pass another vehicle.

ROADSIDE PARKS

ROUTE	NAME	LOCATION
Mo. 1	Cazal	7 mi. N. of Unionville
Mo. 5	Hurricane Deck	23 mi. S. of Versailles
Mo. 6 (City)	Courts Creek	12 mi. E. of Steelville
Mo. 13	Twin Bridges	5 mi. N. of Richmond
Mo. 14M	Coon Creek	22 mi. W. of West Plains
Mo. 15	John Scott Corner	4 1/2 mi. S. of Edina
Mo. 15US 54	Frena Valley	1 mi. S. of Hermann
Mo. 19	River View	3 mi. S. of Eminence
Mo. 19	Mahar	3 mi. S. of Eminence
Mo. 21	Tip Top	3 1/2 mi. S. of Arcadia
Mo. 21	Shylene	3 mi. N. of Ellington
US 24	Wiles	1 1/2 mi. E. of Dewitt
US 24	Mary Lowry	3 mi. W. of Huntville
US 24-61	Palmyra	4 mi. S. of Palmyra
Mo. 25	Old Whitewater	1 1/2 mi. S. of Delta
Mo. 32	La Bryere	3 1/2 mi. S. of Bismarck
Mo. 34	Stillhouse Hollow	2 1/2 mi. W. of Piedmont
US 36	Scillyway	1 mi. W. of Hamilton
US 36	Theodore Gary	2 mi. W. of New Cambria
US 40	Griffith	3/4 mi. E. of Marshall Jct.
US 40	Old Forts of 1812	2 mi. E. of Boonville
US 40	Hauschild	3 mi. E. of Columbia
US 40	A. W. "Boss" Graham	4 mi. E. of Warrenton
US 40	Little Blue Valley	2 mi. E. of Knobtown
US 50	Bradford	2 1/2 mi. W. of Sedalia
US 50	Brownfield	2 mi. E. of Otterville
US 50	North Ten Mile Drive	5 mi. W. of Jefferson City
US 50	South Ten Mile Drive	11 mi. E. of Linn
US 50-66	Jensen's Point	1 1/2 mi. E. of Pacific
US 52	Hudson	3 mi. W. of Replington City
US 54	J. R. Davis	10 mi. E. of Nevada
US 54	Hickson	2 mi. E. of Wheeland
US 54-Mo. 73	Olendorf	3 mi. S. of Macks Creek
US 54	Lake of the Ozarks	1 1/2 mi. N. of Bagnell Dam
US 54	Lake View	1 1/2 mi. N. of Bagnell Dam
US 54-Mo. 19	Lake Scott Corner	13 mi. N.E. of Billings
US 54	Berghaus	2 1/2 mi. N.E. of Billings
US 59	Sanford	6 mi. W. of Springfield
US 60	Cold Star Memorial	4 mi. S. of Palmyra
US 61-24	Palmyra	4 mi. S. of Palmyra
US 61-67	Austin-Picairn	1 mi. N. of Frutas
US 61	Grindstone Hill	6 mi. S. of Crystal City
US 61	Fourche a Du Clos	1 mi. N. of Bloomdale
US 61	Weiss	3 1/2 mi. N. of Jackson
US 61	El Camino	3 1/2 mi. N. of Cape Girardeau
US 61	Wedding	4 mi. N. of Benton
US 61	Felker	1 mi. S. of Portageville
US 61-136	Portage Bay	Junction at Lancaster
US 61-136	Ruger Hughes	8 1/2 mi. N. of Kirksville
US 63	Butler-Franks	2 1/2 mi. S. of Macon
US 63	Shore	1 mi. S. of Clark
US 63	Maud Hall Jones	2 mi. N. of Ashland
US 63	Spring Creek Gap	2 1/2 mi. N. of Ashland
US 63	Lead-Weir	1 1/2 mi. N. of West Plains
US 65	Sunset	3 mi. S. of Princeton
US 65	Patty-Crane	1 mi. S. of Warsaw
US 65	Chula Vista	6 mi. N. of Branson
US 66	Spring River	1 mi. E. of Carthage
US 66	Brewster	8 mi. W. of Springfield
US 66	Twin Oaks	12 mi. W. of Lebanon
US 66	Eden	13 mi. E. of Lebanon
US 66	George M. Read	2 mi. E. of Waynesville
US 66	Oak Grove	3 mi. E. of Cuba
US 66-50	Jensen's Point	1 1/2 mi. E. of Pacific
US 61-61	Austin-Picairn	1 mi. N. of Frutas
US 67	Cherokee Trail	10 mi. S. of Farmington
US 67	Miss La Motte	1 mi. S. of Farmington
US 69	Green	2 mi. S. of Pattersonburg
Mo. 70	Kemper Creek	3 1/2 mi. W. of Fredericktown
US 71	US 71	1 mi. N. of Maryville
US 71	Mound Valley	2 mi. N. of Archa
US 71	Seawhore	1 1/2 mi. S. of Jct. 60, near Neesho
US 71	Indian Creek	1 mi. S. of Langan
Mo. 73US 54	Olendorf	3 mi. S. of Macks Creek
Mo. 76	Emery Creek	3 mi. E. of Jct. US 65
Mo. 76	Lake Taneycomo	2 1/2 mi. W. of Forsyth
Mo. 76	Saw Creek	1 1/2 mi. W. of Forsyth
Mo. 76	Clinton Spring	1 1/2 mi. S. of Louisiana
Mo. 76	Pinnacle	North edge of Clarksville
Mo. 82	Sac Osage	2 mi. S. of Osceola
Mo. 86	Pinnacle Point	4 mi. W. of
Mo. 86	Table Rock	2 1/2 mi. W. of US 65
Mo. 103	Lee Bevens	2 mi. S. of Van Buren
US 103-63	Ruger Hughes	Junction at Lancaster
US 160	River Dale	3 1/2 mi. S. of Ruff
US 160	Inspiration Point	7 mi. N.W. of Branson
US 169	Mo.-Ark. Broadview	5 mi. W. of Lutf
US 275	Davis	8 mi. N.W. of Savannah

STATE HIGHWAY COMMISSION

NAME	OFFICE	LOCATION
Harris D. Rodgers	Chairman	Benton
J. G. Morgan	Vice-Chairman	Unionville
A. D. Sappington	Member	Columbia
W. H. Robertson	Member	Wabash
T. R. Beveridge	Ex-Officio	Rolla
Rex M. Whitton	Chief Engineer	Jefferson City
Robert L. Hyder	Chief Counsel	Jefferson City
John H. Acuff	Secretary	Jefferson City

DISTRICT OFFICES	DISTRICT ENGINEER
1 St. Joseph	L. F. Beckert
2 Macon	B. F. Leslie
3 Hannibal	F. L. Stuckey
4 Kansas City	L. M. Hoskins
5 Jefferson City	V. B. Saville
6 Kirkwood	C. C. Tevis
7 Joplin	R. A. Currie
8 Springfield	G. E. Wolff
9 Willow Springs	M. J. Snider
10 Silkeston	M. S. Gwinn

STATE HIGHWAY PATROL

TROOP HEADQUARTERS	OFFICER IN CHARGE
Troop A, Lee's Summit	Capt. G. W. Pate
Troop B, Macon	Capt. G. R. Minor
Troop C, Kirkwood	Capt. C. R. Oliver
Troop D, Springfield	Capt. C. W. Huston
Troop E, Poplar Bluff	Capt. O. L. Wallis
Troop F, Jefferson City	Capt. P. E. Carl
Troop G, Willow Springs	Capt. J. A. Tandy
Troop H, St. Joseph	Capt. E. L. Davis
Troop I, Rolla	Capt. L. B. Howard

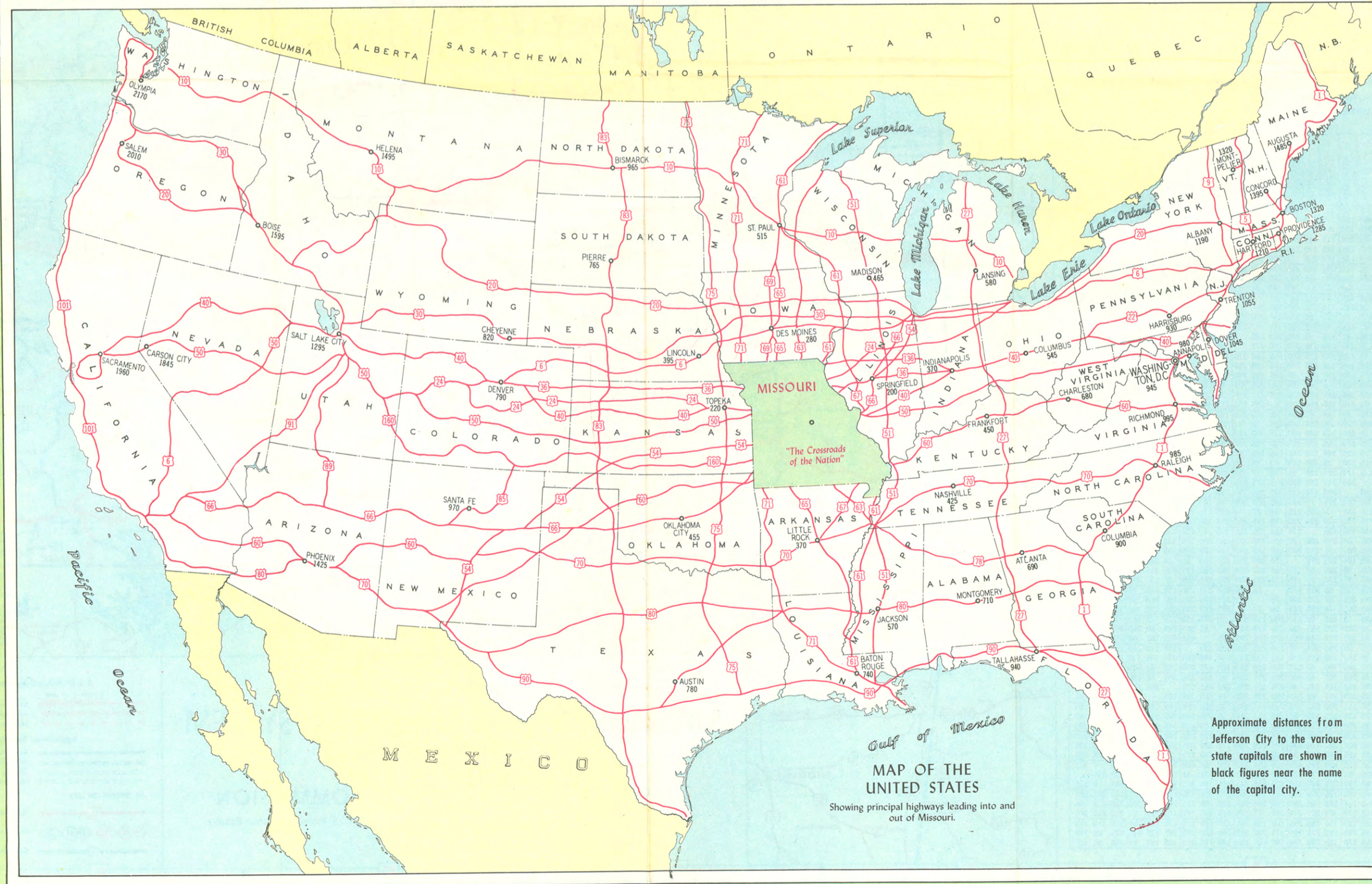
HIGHWAY INFORMATION CENTERS

For detailed information concerning the condition of highways, call or visit the nearest highway department office or highway patrol troop headquarters.

CITY AND LOCATION	MAIN OFFICE	TELEPHONE
Jefferson City, Highway Building		6-3121
Hannibal, McManester Avenue	DISTRICT OFFICES	2764
Jefferson City, US Route 50 West		6-6135
Joplin, 410 Range Line Road, US Route 71		MAyfair 3-5794
Kansas City, 5117 East 21st Street		WAshburn 1-7105
Macon, 329 South Kirkwood Road		TAylor 1-0230
St. Joseph, North Jct. US Routes 71 & 169		2152
Springfield, US Route 60 & 166 West		2-3294
Springfield, 1923 North Weller Avenue		4-2544
Willow Springs, US Route 63 North		4

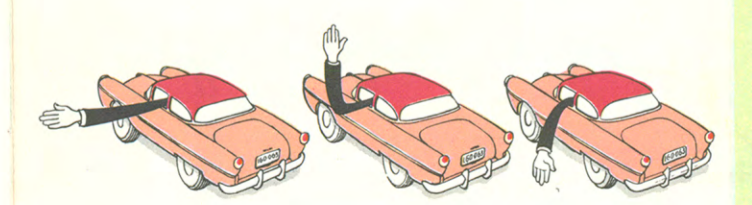
HIGHWAY PATROL

GENERAL HEADQUARTERS	TELEPHONE
Jefferson City, High and Broadway Streets	6-7141
Jefferson City, US Route 50 East	6-7141
Kirkwood, US Route 50 & Bolter Road	Hempstead 2-2661
Lee's Summit, US Route 50 East	407
Macon, US Route 36, West of US Route 63	2132
Poplar Bluff, US Route 67 South	3522
Rolla, US Route 66	1500
St. Joseph, North Jct. US Routes 71 & 169	3-0291
Springfield, US Routes 60 & 166 West	4-1525
Willow Springs, US Route 60 Northwest	310



Approximate distances from Jefferson City to the various state capitals are shown in black figures near the name of the capital city.

OFFICIAL HAND SIGNALS IN MISSOURI



LEFT RIGHT STOP