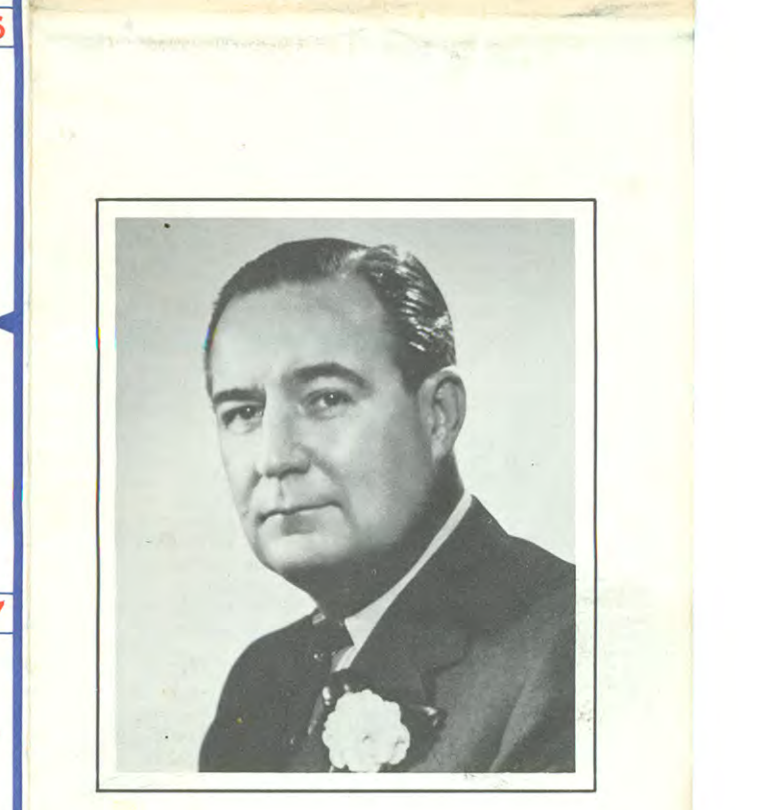


MISSOURI STATE HIGHWAY COMMISSION

1959 HIGHWAY MAP OF MISSOURI

The Family "Vacation Land"

This map is not to be used for commercial or political purposes and is furnished free of charge by the Missouri State Highway Commission, for general information only.



EXECUTIVE OFFICE
STATE OF MISSOURI
JEFFERSON CITY

TO THE USERS OF MISSOURI HIGHWAYS

Speaking for all the people of Missouri, I wish to extend a sincere welcome to each of you. For your convenience you will find your 1959 Highway Map a specially edited guide to the most interesting areas in Missouri.

Missouri has much to offer the traveler with the Great Recreational Area, our large Industrial cities, Fertile Farms, all flavored with an interesting and rich background. It is our hope that the Highway System and we ever mindful of our responsibility to make them as safe as possible, would assist you to the countryside of others—drive carefully—and may your trip be pleasant.

Sincerely,
James T. Blair, Jr.
GOVERNOR OF MISSOURI

STATE HIGHWAY COMMISSION
Main Office Jefferson City

HIGHWAY INFORMATION CENTERS
For detailed information concerning the condition of highways, call or see the nearest highway department office or highway patrol troop headquarters.

HIGHWAY DEPARTMENT OFFICES
Address Telephone

STATE HIGHWAY PATROL
General Headquarters Jefferson City
COL. HUGH H. WAGGONER, Superintendent

OFFICER IN CHARGE

| | | |
|-------------------------|-----------------------|-----------|
| Troop A, Lee's Summit | Capt. G. W. Pate | 6-7141 |
| Troop B, Macon | Capt. E. L. Davis | HE 2-2661 |
| Troop C, Kirkswood | Capt. C. R. Oliver | BR 1-1407 |
| Troop D, Springfield | Capt. C. W. Huston | EL 1-2139 |
| Troop E, Poplar Bluff | Capt. O. L. Wallis | PO 5-3322 |
| Troop F, Jefferson City | Capt. P. E. Corl | EM 4-1215 |
| Troop G, Willow Springs | Capt. J. A. Tandy | AD 3-0291 |
| Troop H, St. Joseph | Capt. R. E. L. Walker | UN 4-1525 |
| Troop I, Rolla | Capt. T. R. Taylor | UN 4-1525 |

LEGEND

INTERSTATE U.S. HIGHWAYS and MAJOR STATE HIGHWAYS

SUPPLEMENTARY STATE HIGHWAYS

AS SHOWN ON MAP

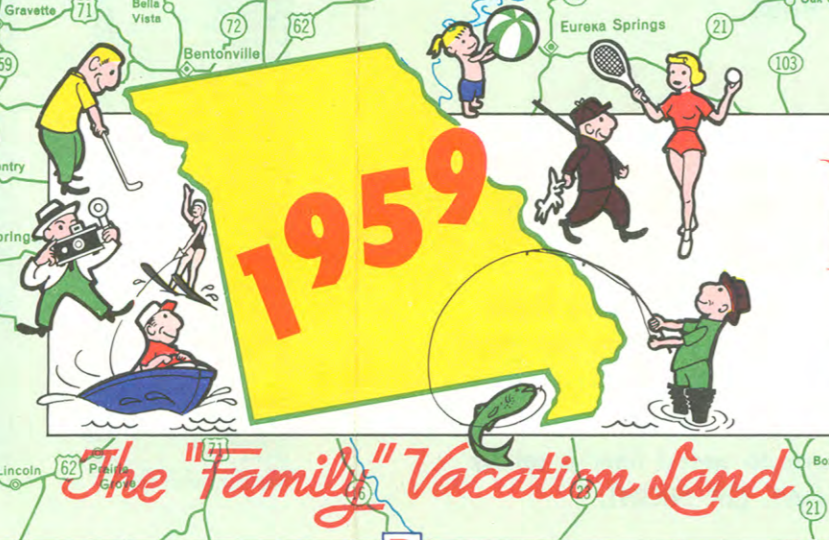
AS MARKED ON ROAD

CITY SIZES

ACCUMULATED MILEAGES and MILEAGES BETWEEN JUNCTIONS

SCALE IN MILES

1 INCH REPRESENTS APPROXIMATELY 100 MILES



1959 MISSOURI Highway Map
Issued by Missouri State Highway Commission

COPYRIGHT, MISSOURI STATE HIGHWAY COMMISSION