

Missouri Department of Transportation

General Headquarters
P.O. Box 270
Jefferson City, Missouri 65102

Customer Service
Toll Free in Missouri
Outside Missouri

Highways and Transportation
Commission
MoDOT Director

Highway Safety
Over Dimension Over Weight Permits
Motor Carrier Services

District Offices

St. Joseph	3602 N. Belt Highway	816-387-2350
Macon	602 N. Missouri Street	660-385-3176
Hannibal	1711 South Route 61	573-248-4990
Lee's Summit	600 N.E. Colbern Road	816-622-6500
Jefferson City	1511 Missouri Boulevard	573-751-3322
Chesterfield	1590 Woodlake Drive	314-340-4100
Joplin	3901 E. 32nd Street	417-629-3300
Springfield	3025 E. Kearney	417-895-7000
Willow Springs	910 Springfield Road	417-469-3134
Sikeston	2675 N. Main Street	573-472-5333

www.modot.org

888-ASK MODOT
(888-275-6626)
573-751-2551

573-751-2824

573-751-4622

800-800-BELT
(800-873-3699)
866-831-MCRS

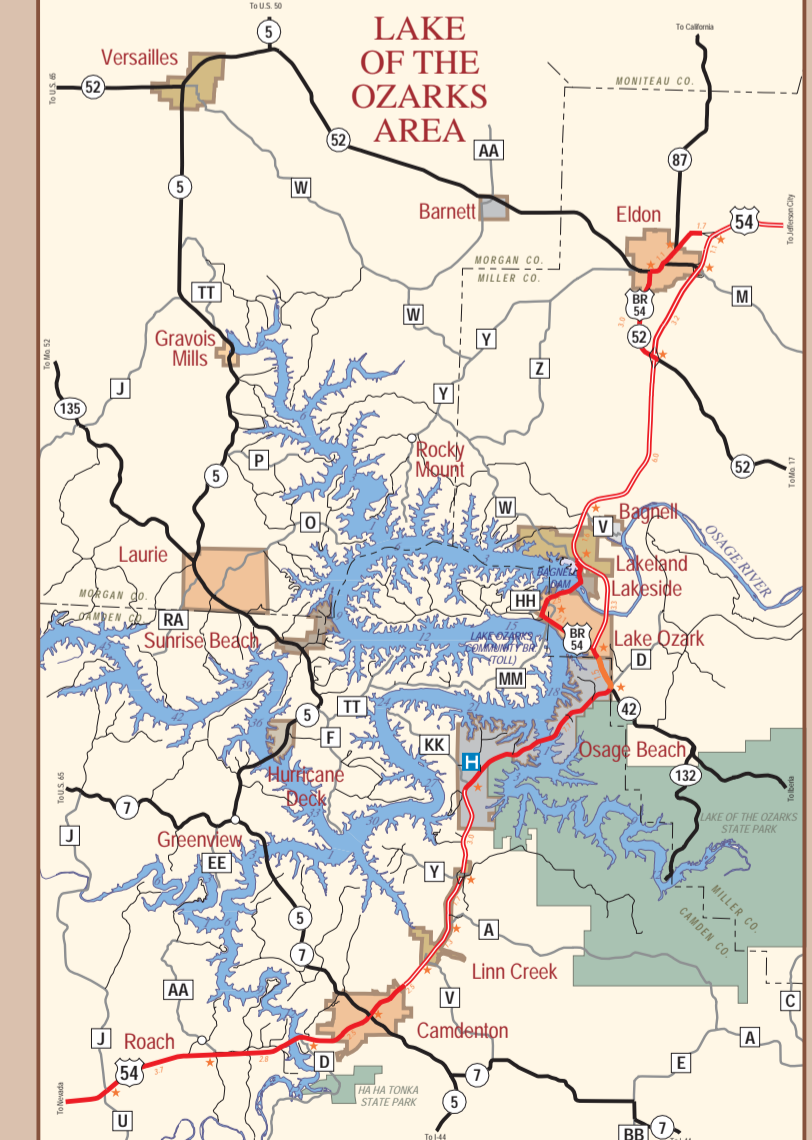
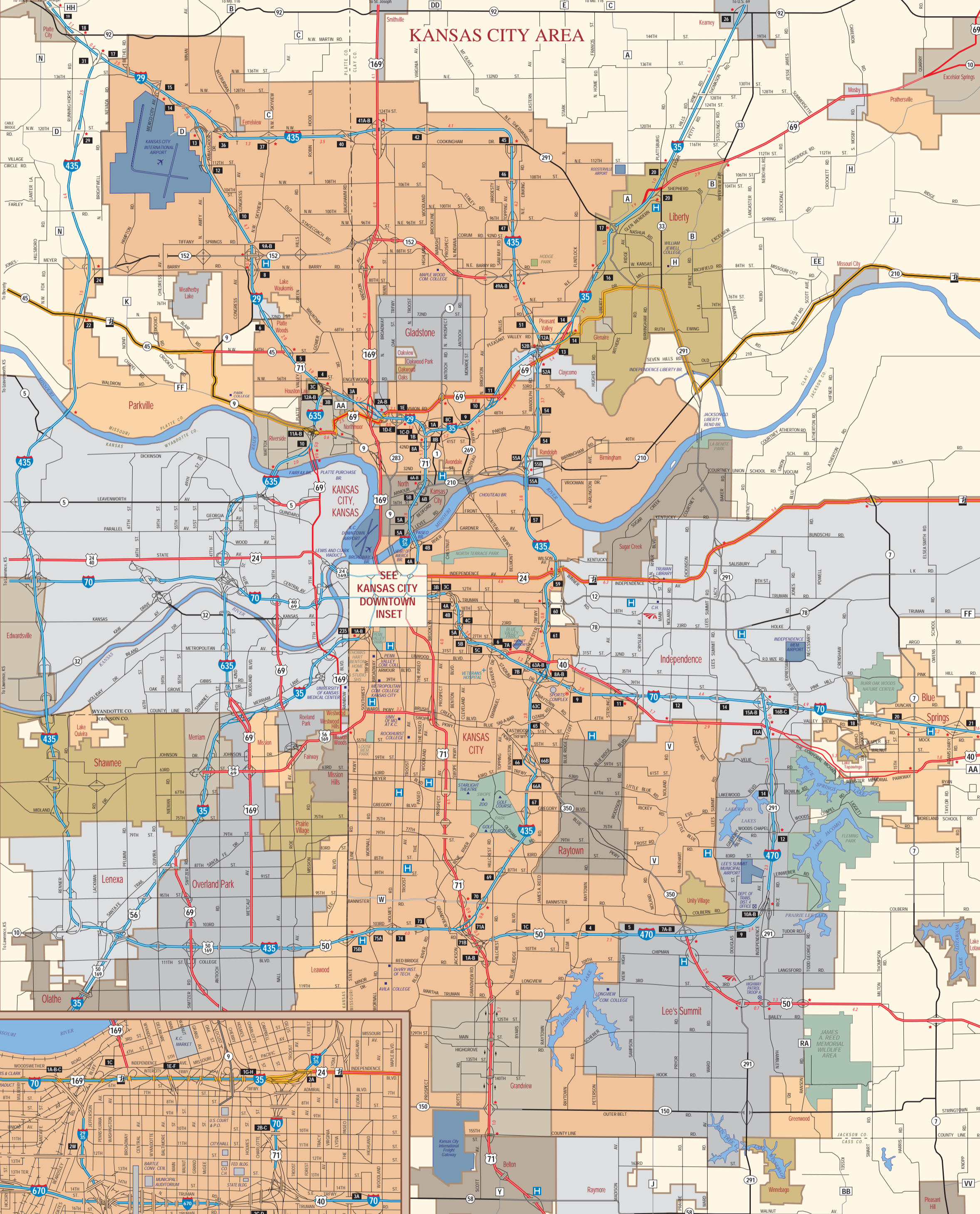
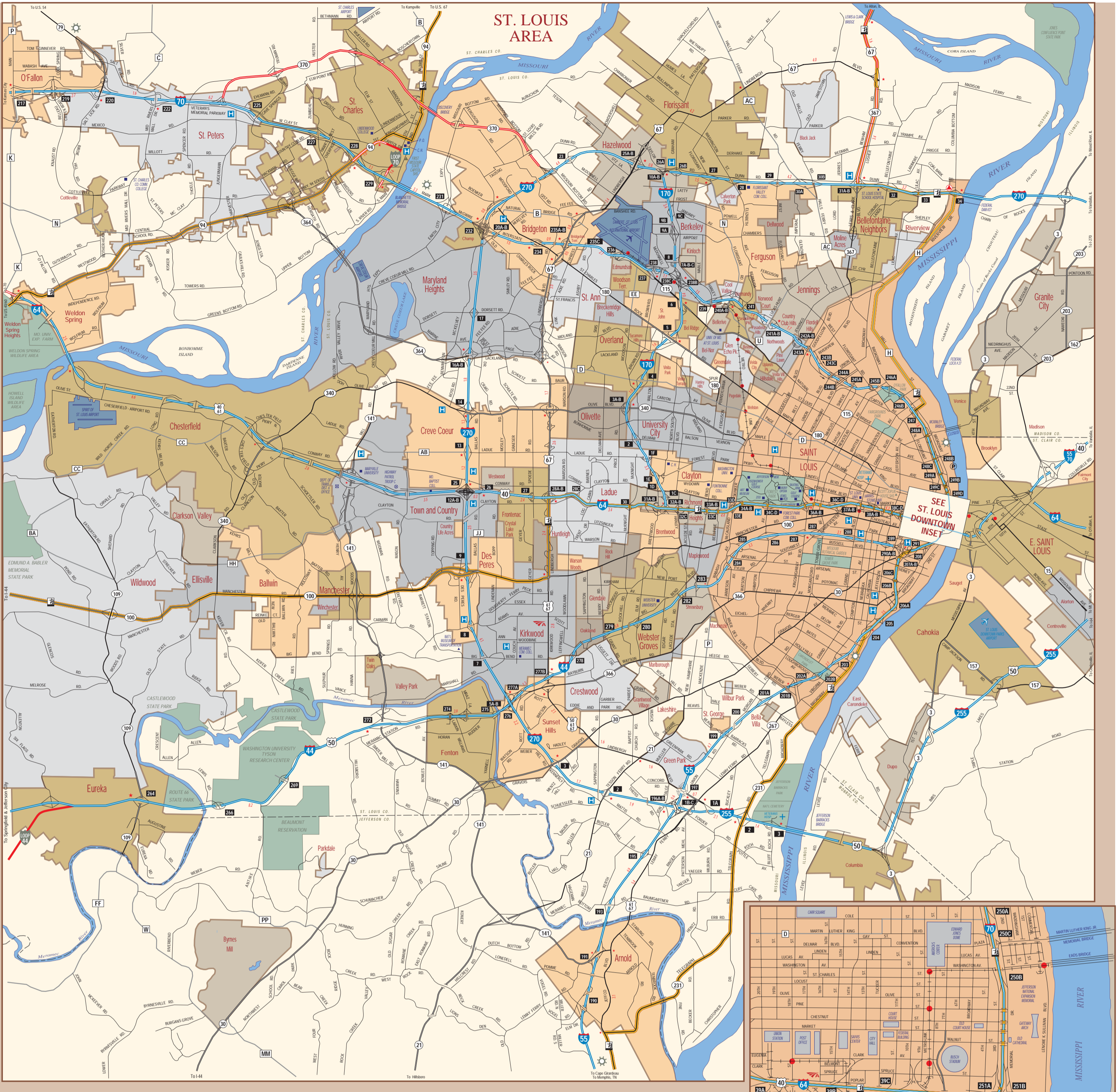
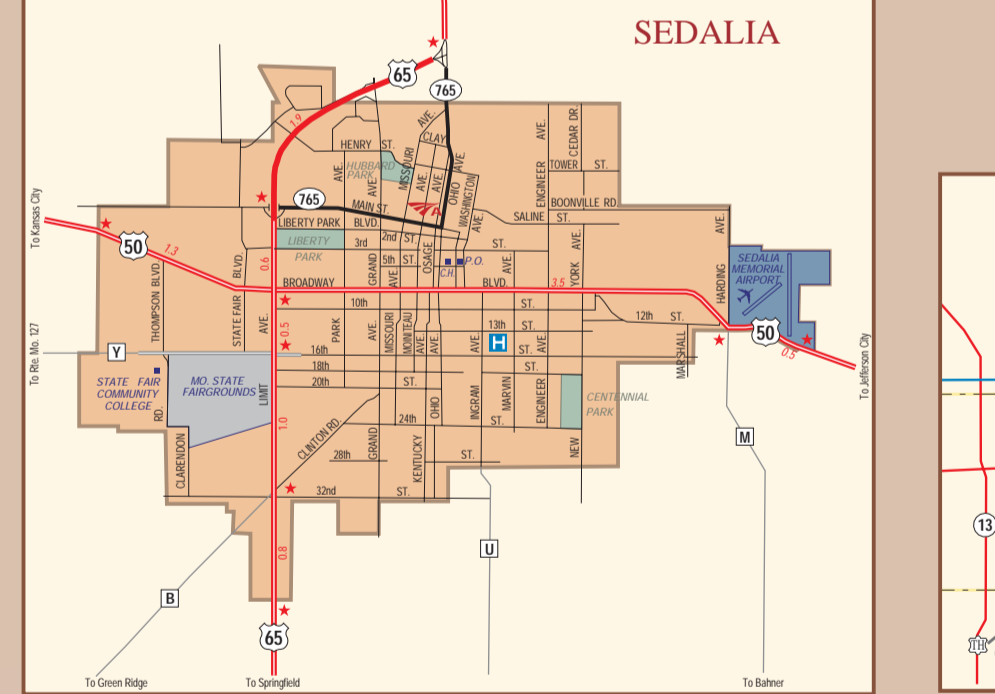
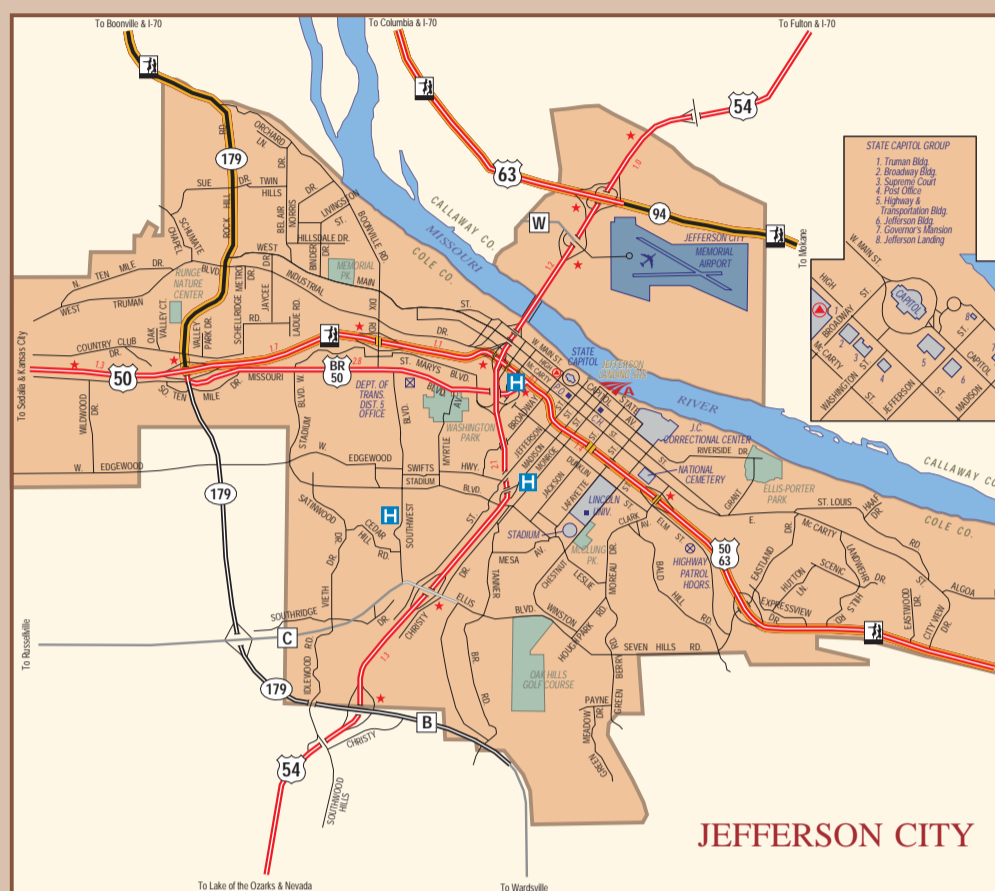


Missouri State Highway Patrol

Emergency 800-525-5555 or *55 on a cellular phone
Non-emergency (V/TDD) 573-751-3313
Road Conditions Report 800-222-6400

Headquarters Jefferson City 1510 E. Elm 573-751-3313

Troop A	Lee's Summit	504 S.E. Blue Parkway	816-622-0800
Troop B	Macon	308 Pine Crest Drive	660-385-2132
Troop C	St. Louis	599 S. Mason Rd	314-340-4000
Troop D	Park Hills	U.S. 67 (Satellite)	573-431-0166
Troop E	Springfield	3131 E. Kearney	417-895-0808
Troop F	Carthage	4284 S. Grand (Satellite)	417-359-1500
Troop G	Poplar Bluff	Highway 67 North	573-840-9500
Troop H	Sikeston	105 Keystone (Satellite)	573-472-5200
Troop I	Jefferson City	2920 N. Shamrock Rd	573-751-1000
Troop J	Willow Springs	Business Route 60	417-469-3121
Troop K	St. Joseph	3225 N. Belt Highway	816-387-2345
Troop L	Rolla	Route E, Nagogami Rd	573-368-2345



Travel Resources

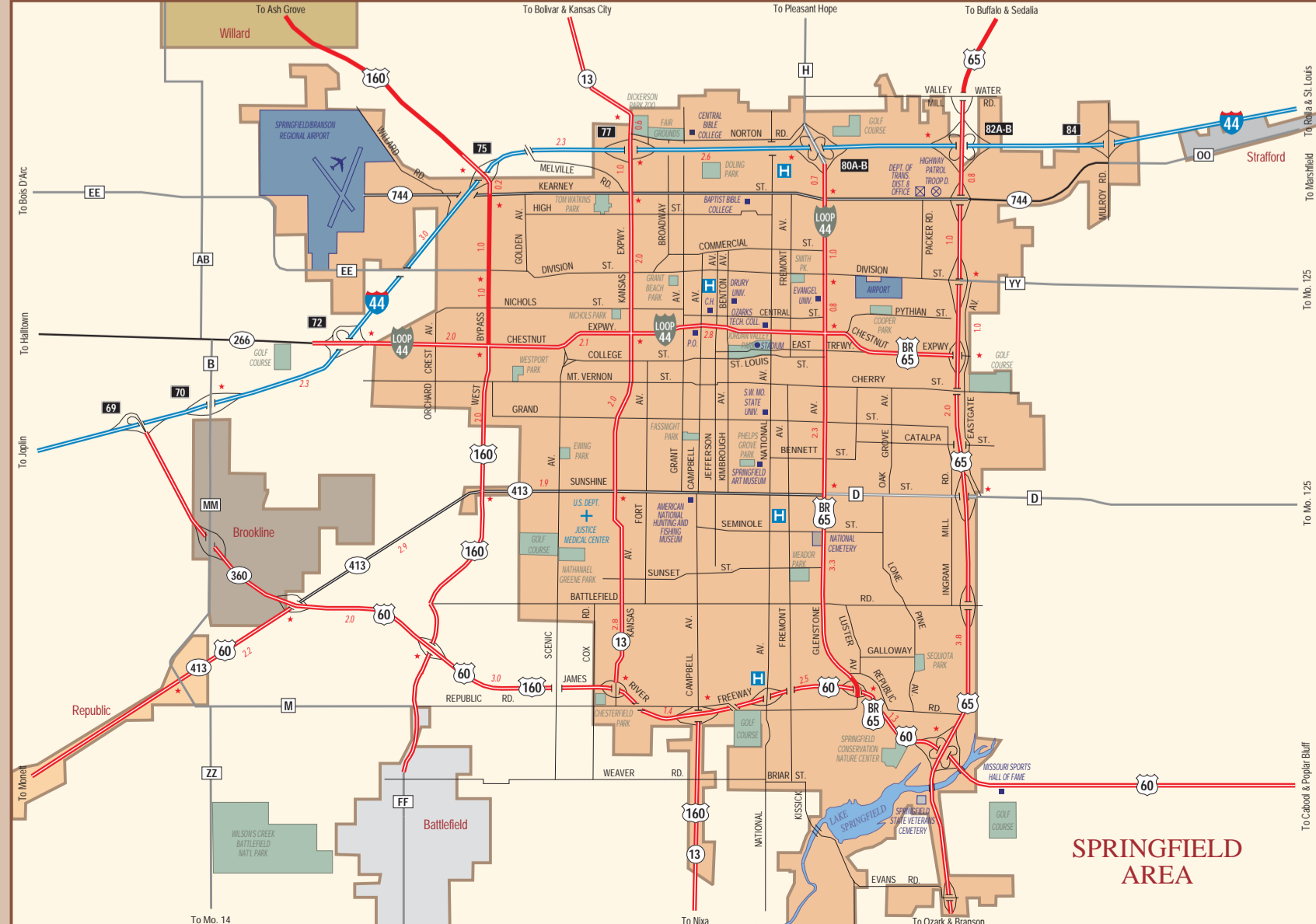
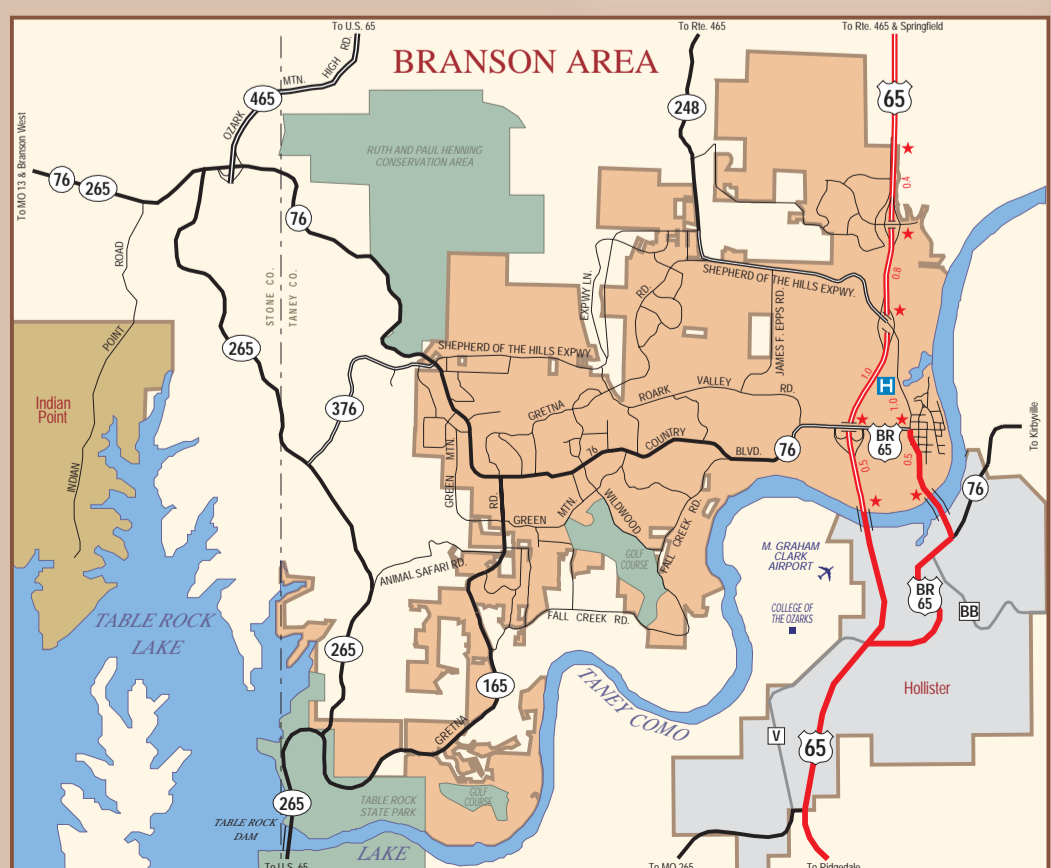
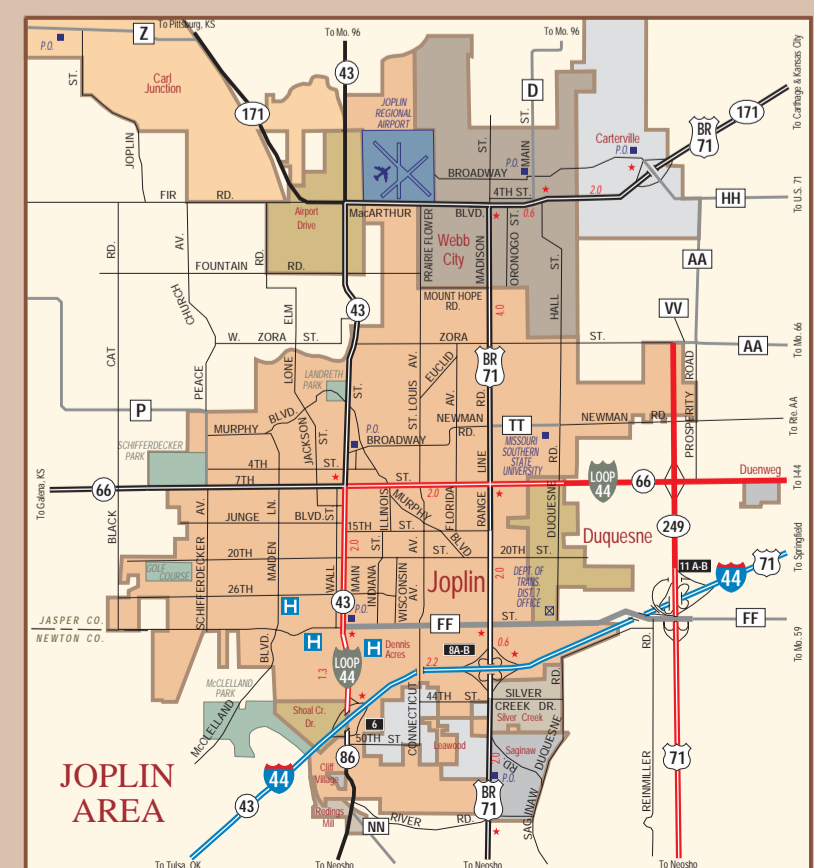
Water Patrol	General Information	573-751-3333
Division of Tourism	To Order a Missouri Vacation Planner visit www.visitmo.com	
Department of Revenue	Driver & Motor Vehicle Licensing www.dor.mo.gov	573-751-4600
Department of Conservation	Nature Areas and Other Inquiries www.mdc.mo.gov	573-751-4115
Department of Natural Resources	Park and Historic Site Information www.mostatetparks.com	800-334-6946 800-379-2419 (TDD)
Amtrak	Tickets and Information www.amtrak.com	800-USA-RAIL
MO Relay Service	Communication assistance for the deaf, hard of hearing and speech-impaired	800-735-2966 (TDD) 800-735-2466 (voice)

Lewis and Clark Historical Markers
Watch for this sign to guide you to more than 100 interpretive markers within Missouri from Cairn, Ill., to the Iowa line.

Lewis and Clark National Historic Trail
Watch for this sign to show you the route of the Lewis and Clark National Historic Trail from St. Louis to the Pacific Ocean. Generally, the trail follows state highways on both north and south sides of the Missouri River. The North Trail begins in West Alton, Mo., and the South Trail begins near the Jefferson National Expansion Memorial (the Arch) in downtown St. Louis.

Lewis & Clark Resources
Missouri Lewis & Clark Bicentennial Commission 800-334-6946
www.lewisandclarkmo.com

Cover Credits
The sunset image of Cape Girardeau's Bill Emerson Memorial Bridge was photographed by Rick Lamb, senior construction inspector at MoDOT's Jackson, Mo., project office.



THE DIFFERENCE IS YOU
DRIVE SMART

MoDOT is working hard to improve Missouri's major highways. Please be cautious and Drive Smart in the work zones that are making your ride smoother and safer - sooner!

Smoother, Safer, Sooner
Amendment 3