

**Missouri Department of Transportation**

Highways and Transportation Commission  
 Lloyd J. Carmichael  
 Stephen R. Miller  
 Kenneth H. Suelhaus  
 Kelley M. Martin  
 Gregg C. Smith

David B. Nichols, Director

MoDOT General Headquarters  
 PO Box 270  
 Jefferson City, Missouri 65102

Customer Service  
 Toll Free in Missouri  
 Outside Missouri

Highway Safety  
 Overweight Permits  
 Motor Carrier Services

MoDOT District Offices

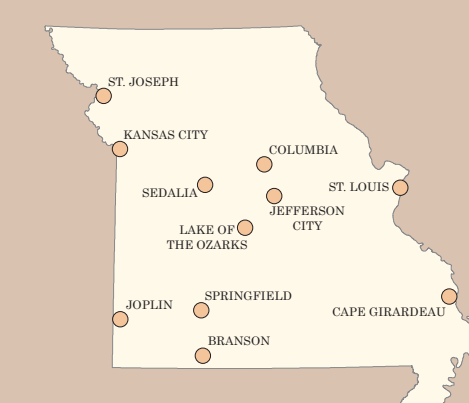
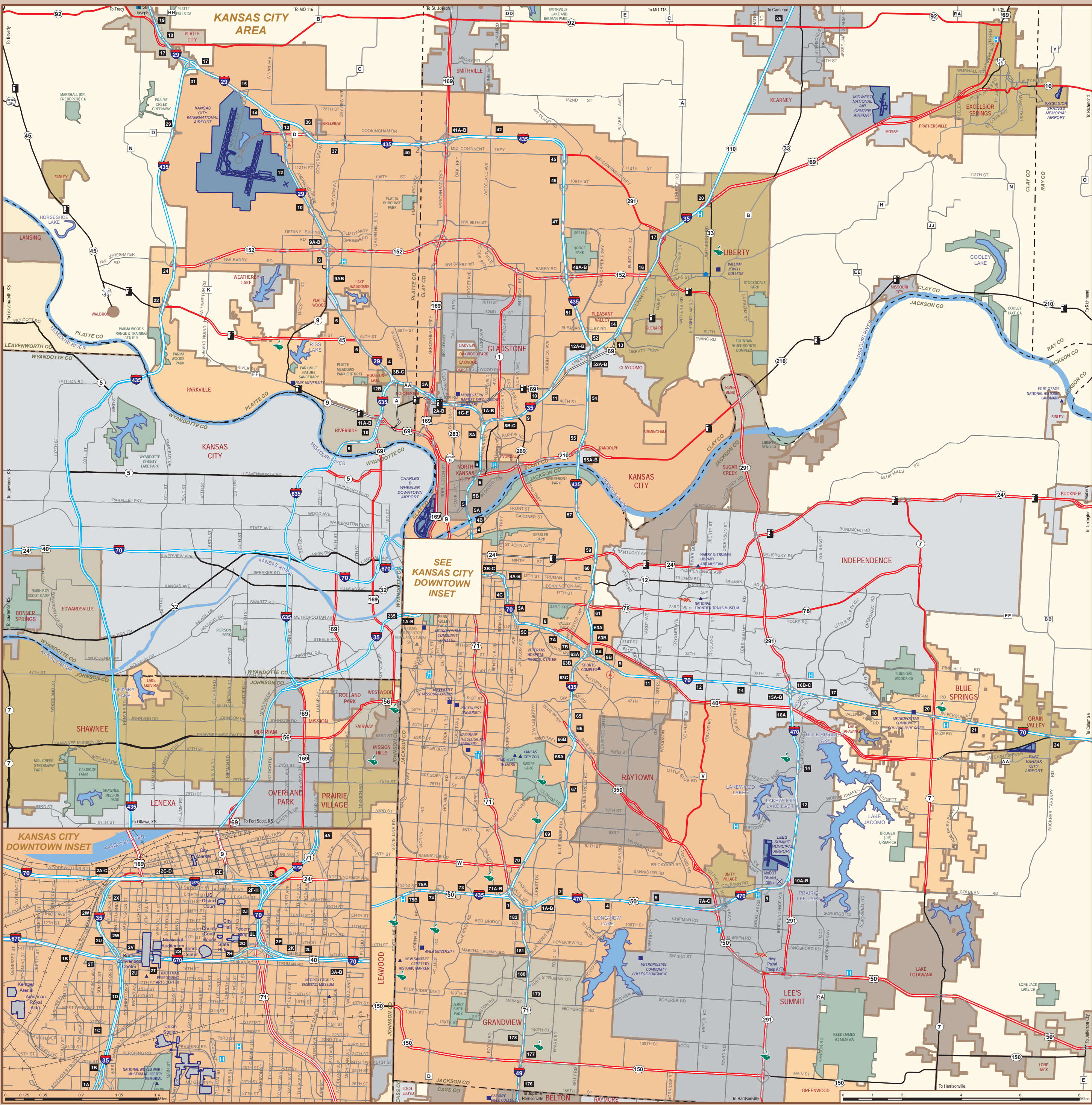
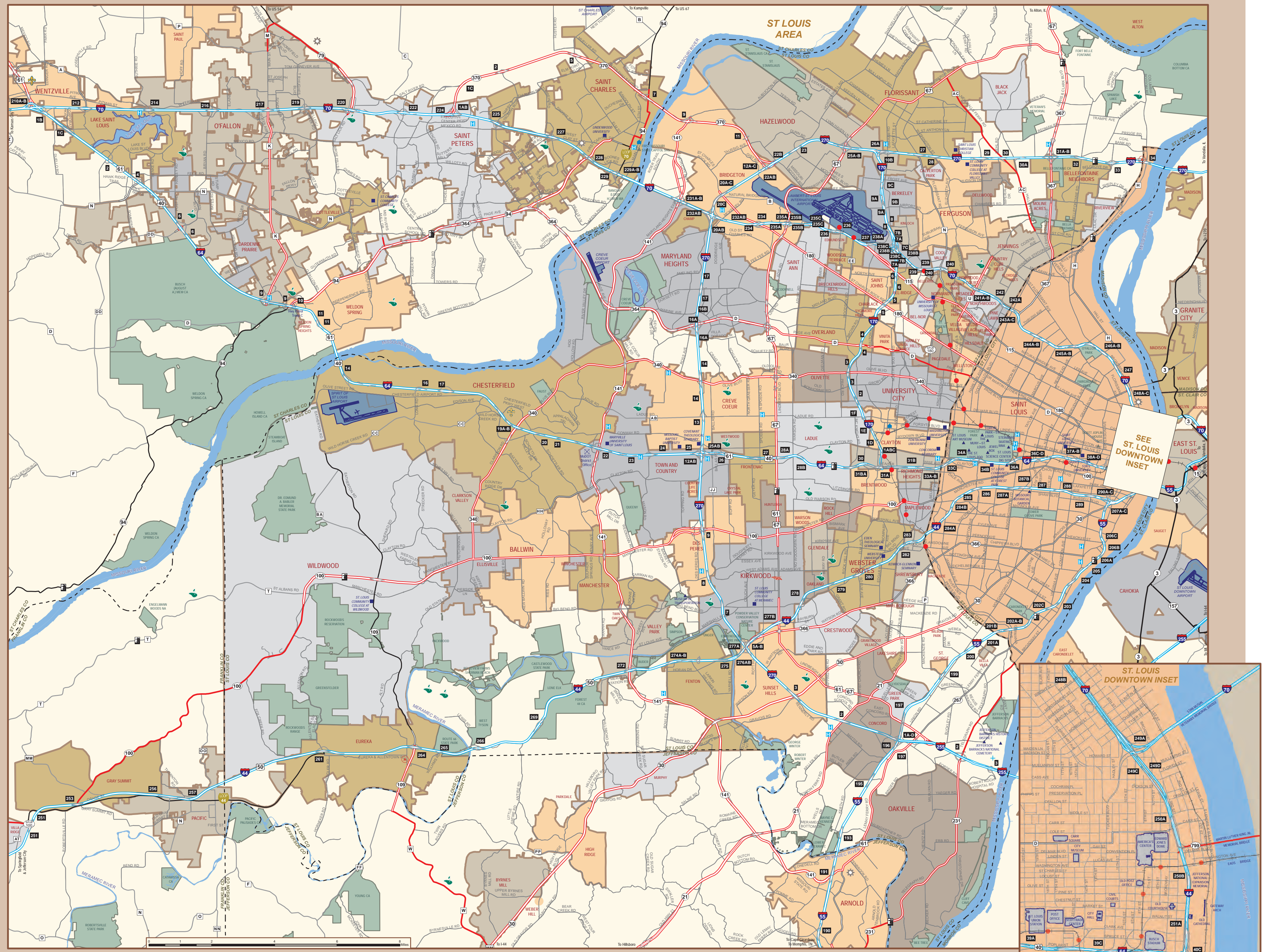
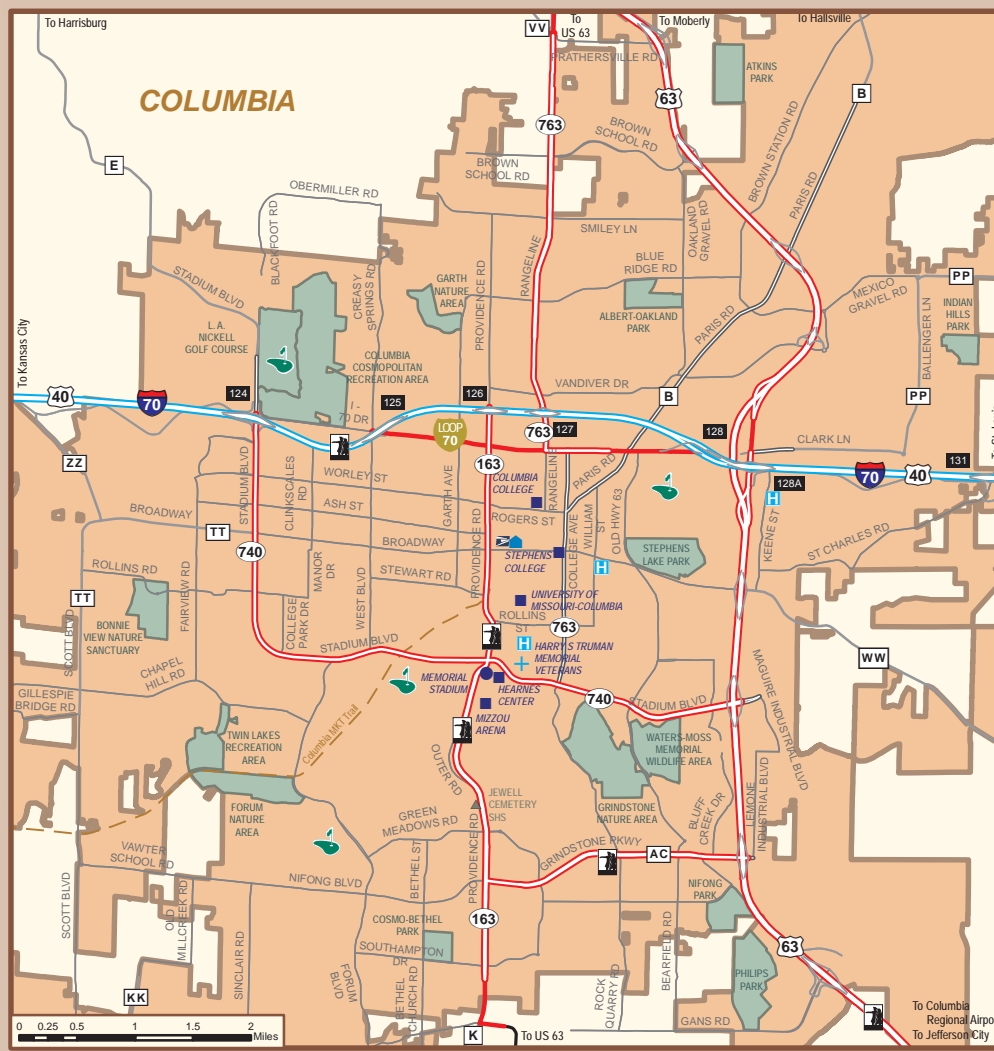
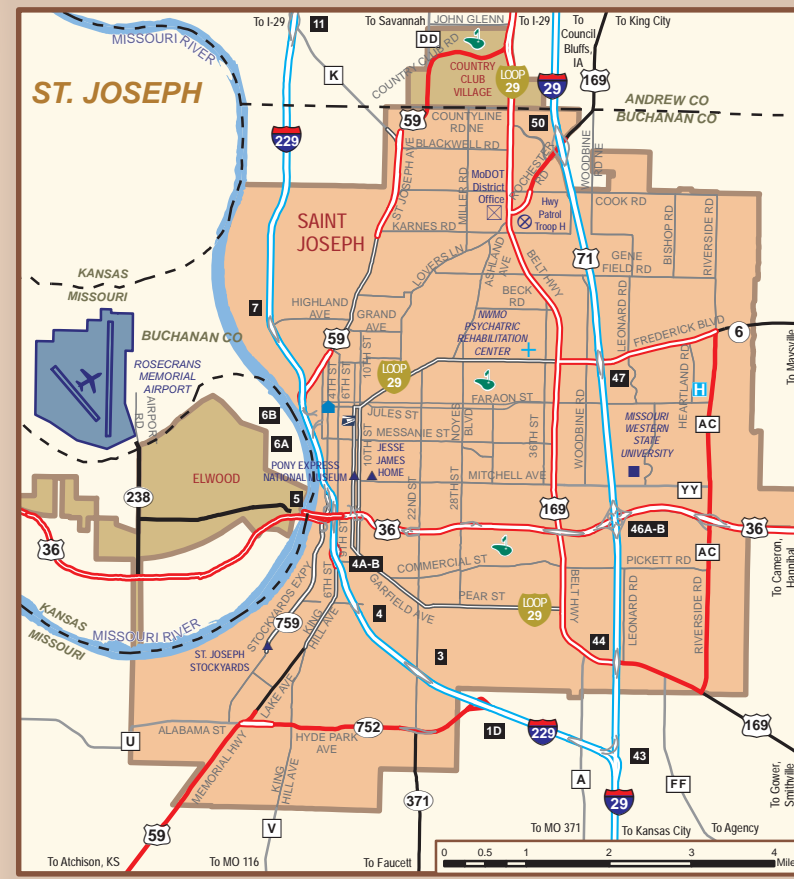
St. Joseph  
 Hannibal  
 Lee's Summit  
 Jefferson City  
 Chesterfield  
 Springfield  
 Sikeston

573-751-2824  
 573-751-2851  
 573-751-4622  
 www.modot.org  
 888-ASK-MODOT  
 (888-275-6636)  
 573-751-2551  
 800-800-2358  
 866-831-6277  
 866-831-6277  
 816-387-2350  
 573-248-2490  
 816-622-6500  
 573-751-3322  
 314-275-1500  
 417-895-7600  
 573-472-5333

**Missouri State Highway Patrol**

Emergency 800-525-5555 or \*55 on a cellular phone  
 Non-emergency 573-751-3313

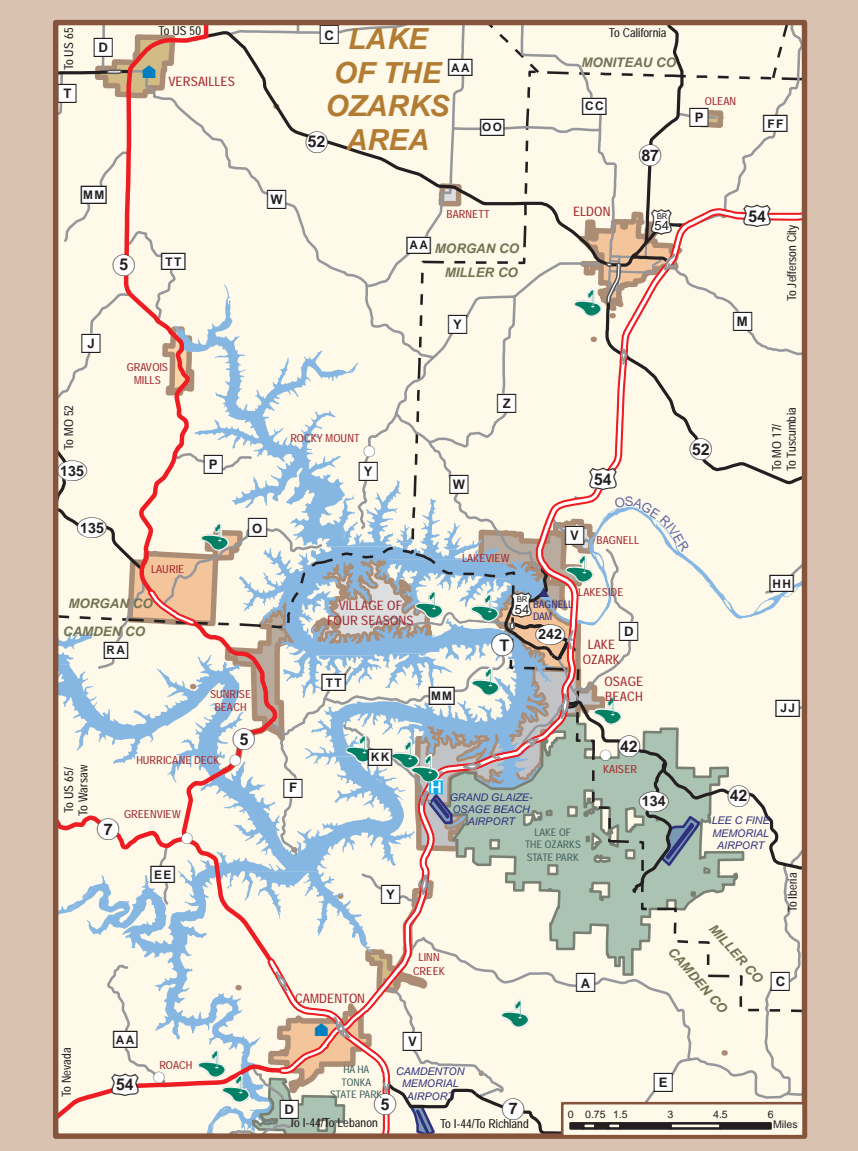
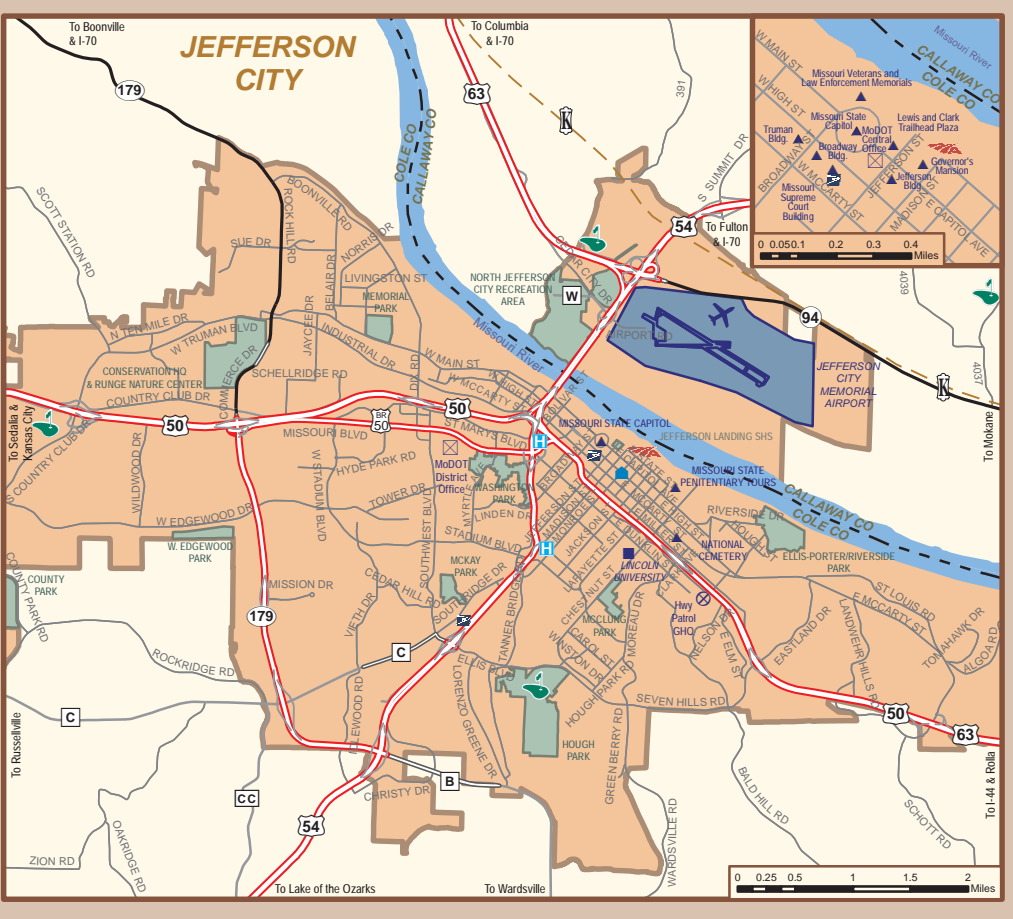
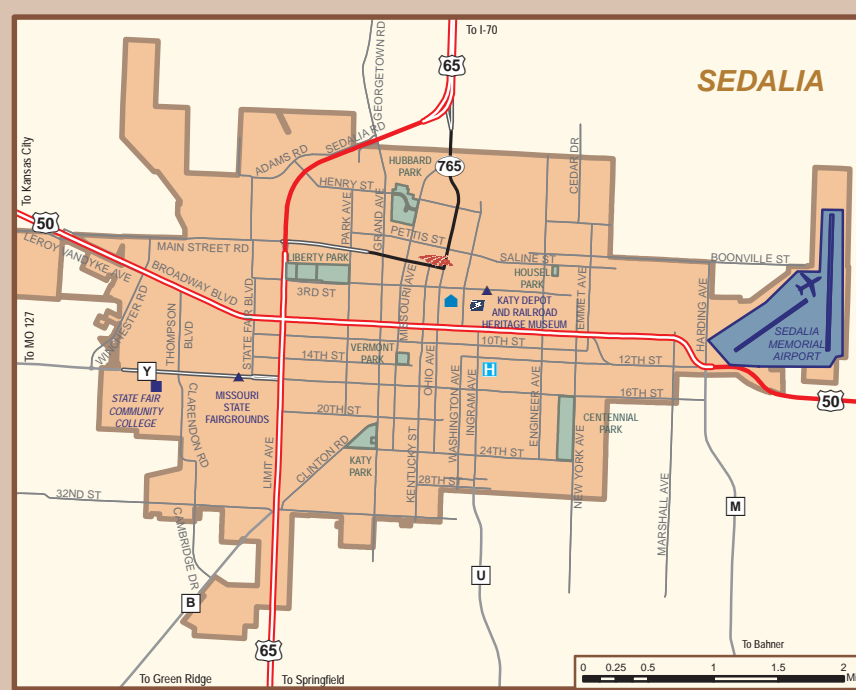
GHQ — Jefferson City 1510 E. Elm 573-751-3313  
 Troop A — Lee's Summit 504 S.E. Blue Parkway 816-622-0800  
 Troop B — Mason 308 Pine Crest Dr. 660-385-2132  
 Troop C — Weldon Springs 891 Technology Dr. 636-300-2800  
 Troop D — St. Louis 3180 Koch Rd. 314-416-2180  
 Troop E — Park Hills 5268 Flat River Rd. 573-431-0166  
 Troop F — Springfield 3131 E. Kearney 417-895-6868  
 Troop G — Carthage 4284 S. Grand 417-895-6868  
 Troop H — Poplar Bluff 4947 Highway 67 North 573-840-9500  
 Troop I — Sikeston 105 Keystone Dr. 573-472-5200  
 Troop J — Jefferson City 2920 N. Shamrock Rd. 573-751-1000  
 Troop K — Willow Springs 1226 Bus. Route 60/63 417-499-3121  
 Troop L — St. Joseph 3525 N. Belt Highway 816-387-2345  
 Troop M — Rolla 1301 Nagagami Rd. 573-368-2345



**LEGEND**

- MoDOT District Office
- Highway Patrol Office
- Courthouse
- Post Office
- Metrolink Station
- Golf Course
- Katy Trail Trail Head
- US 76 Bike Route

SYMBOLS SHOWN REFER TO THE CITY INSETS ONLY. ALL OTHER SYMBOLS ARE REFERRED TO FROM THE MAIN LEGEND ON THE OPPOSITE SIDE OF THE MAP.



**Travel Resources**

Division of Tourism To order a Missouri Vacation Planner www.visitmo.com

Department of Revenue Driver & Motor Vehicle Licensing www.dor.mo.gov 573-751-4600

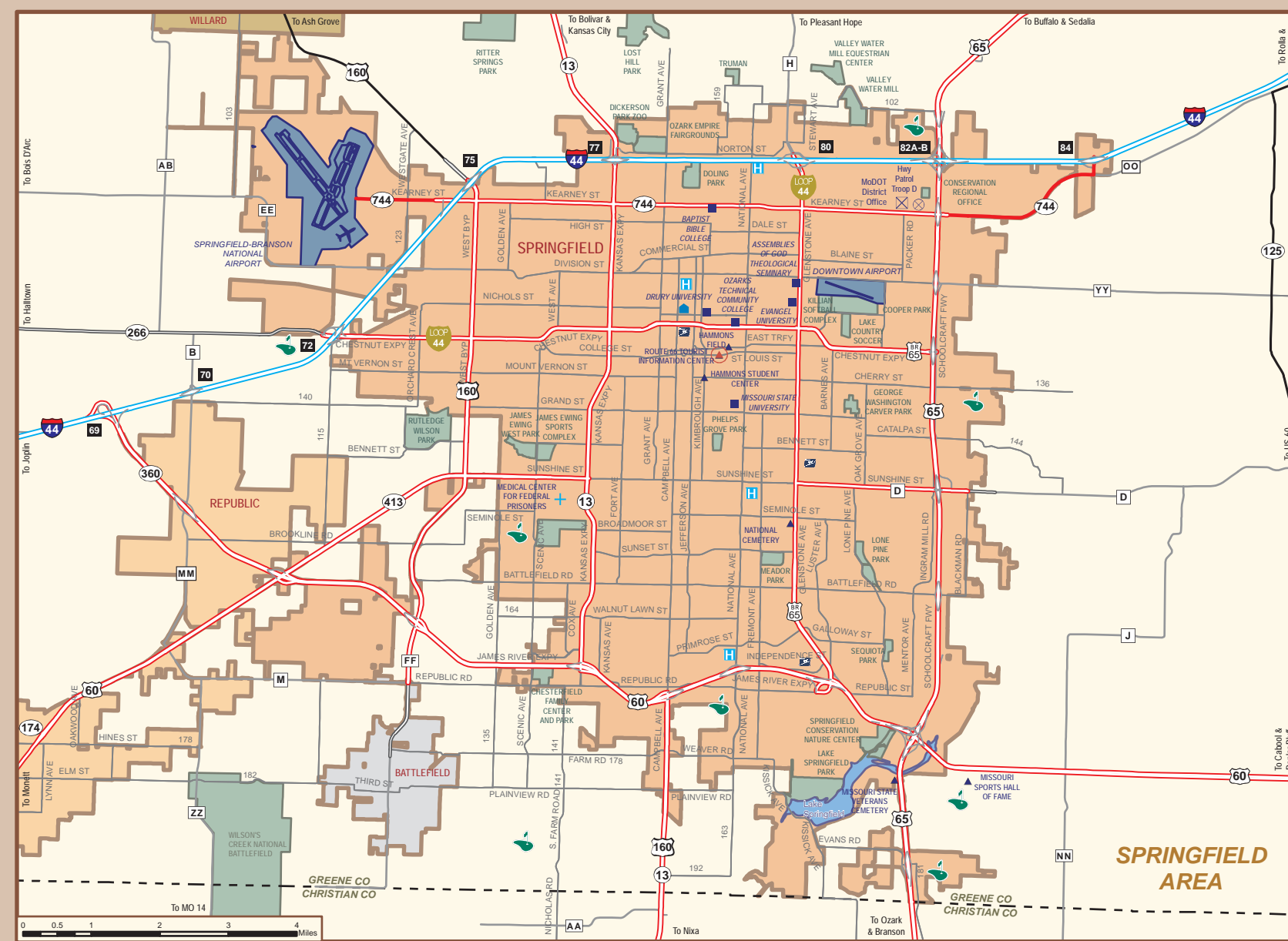
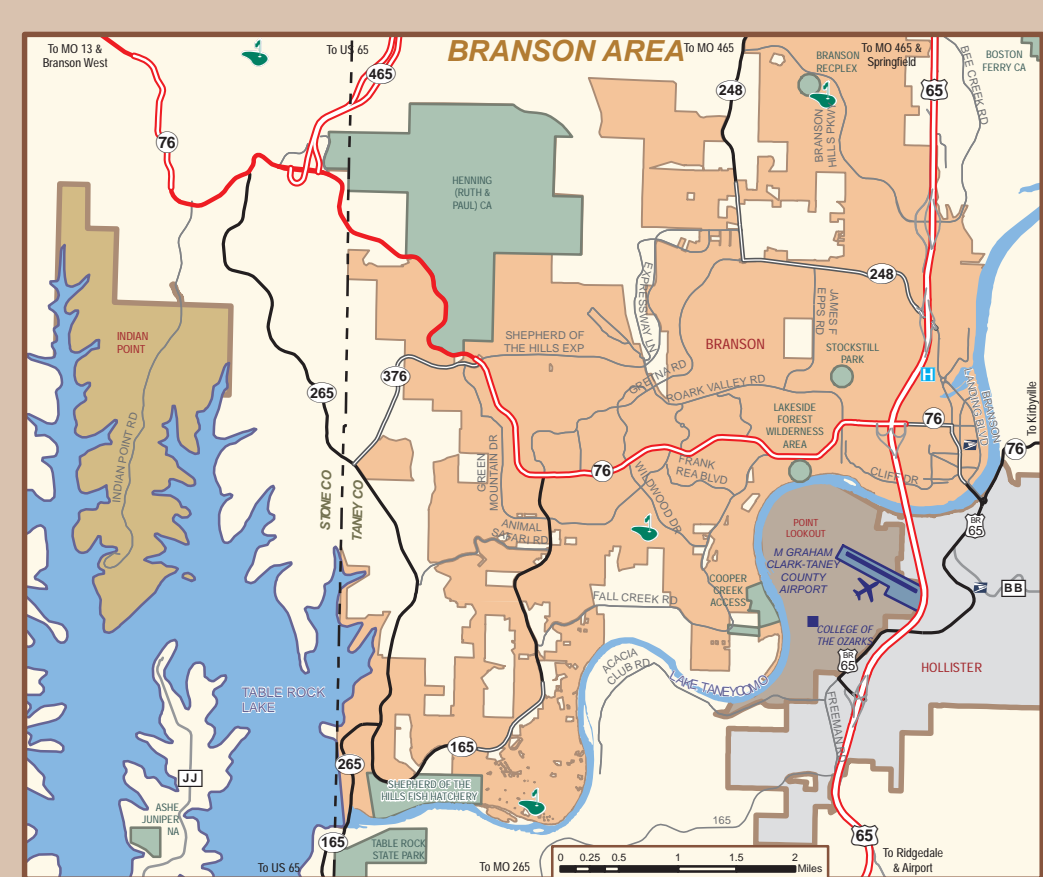
Department of Conservation Nature Areas, Hunting & Fishing www.mdc.mo.gov 573-751-4115

Department of Natural Resources Park & Historic Site Information www.mostatoparks.com 800-334-6946 800-379-2419 (TDD)

Amtrak Tickets and Information www.amtrak.com 800-USA-RAIL

Water Patrol 573-751-3313

Missouri Relay Service Communication assistance for the deaf, hard of hearing and speech impaired 800-735-2966 (TDD) 800-735-2466 (voice)



**MoDOT Centennial: Celebrating a Century**

On March 22, 1913, the Missouri Legislature created the Missouri State Highway Department. Almost immediately afterwards, construction began across the state to link adjoining county seats with paved and maintained roadways.

By the beginning of the next decade, Legislatures were trying to "get Missouri out of the mud" realizing that economic prosperity and growth were integrally tied to transportation.

Over the decades MoDOT has managed to keep Missouri moving. Today the state serves as a transportation crossroads for the entire nation.

On the cover, The cover of Missouri's Centennial Edition highway map features a collage of historic photos and the I-29/1-35 Christopher S. Bond Bridge in Kansas City, which was opened to traffic in 2010. The Bond Bridge is a landmark, cable-stayed bridge over the Missouri River and replaced the Paseo Bridge, which was built in 1954. Bond Bridge photo by Cathy Morrison.

**Rules of the Road**

- Traffic laws vary from state to state. Here are some Missouri rules you should know
- Missouri law requires drivers to wear their seat belts.
- Missouri law requires drivers to slow down or move over (when safe to do so) when approaching emergency or maintenance vehicles working on the highways.
- If you're involved in a minor, non-injury traffic crash, state law requires you to move your vehicle off the road to keep traffic from backing up.
- Children under eight years of age must travel in an appropriate child safety seat or booster seat unless they weigh 80 pounds or are 4 feet, 9 inches tall.
- Headlights must be used in foggy weather and whenever weather conditions require drivers to use their windshield wipers.
- Hitting a highway worker with your vehicle could cost \$10,000, as well as a lost license for a year.

