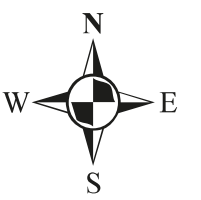


MISSOURI VEHICLE ROUTE MAP 2021-2022



Map insets for the Kansas City, St. Louis, Columbia, Springfield, and St. Joseph areas are the map's back.

WEIGH STATIONS	DESIGNATED HIGHWAY NETWORK
Platte City	INTERSTATE 29 Northbound-only
Watson	Southbound
Eagleville	INTERSTATE 35 Southbound
Kearney	Northbound-only
Joplin	INTERSTATE 44 Eastbound & Westbound
Saint Clair	Eastbound & Westbound
Harrisonville	INTERSTATE 49 Northbound
Harrisonville	Southbound
Steele	INTERSTATE 65 Northbound-only
Bloomfield	Southbound-only
Charleston	INTERSTATE 67 Southbound-only
Forrestal	INTERSTATE 70 Eastbound & Westbound
Mayview	Eastbound & Westbound
Caruthersville	INTERSTATE 168 Northbound-only
Saint Joseph	US HIGHWAY 58 Eastbound-only
Willow Springs	US HIGHWAY 60 Eastbound & Westbound

- DESIGNATED HIGHWAY NETWORK (as established by Surface Transportation Assistance Act (STAA), 1992)
- DESIGNATED HIGHWAY NETWORK (subsequently added by state authority)
- BOTH NETWORKS PLUS 10 MILES BEYOND, ALLOW LEGAL OPERATION OF VEHICLES WITH THE FOLLOWING LIMITS¹:
 - 14'0" Overall Height
 - 8'6" Overall Width
 - 53'0" Length of semitrailer in a truck-tractor/semitrailer combination
 - 65'0" Overall Length for other combinations (truck/trailer, towing, etc.)
 - 45'0" Overall Length for single unit
 - 28'0" Overall Length of each semitrailer or trailer in a truck-tractor/semitrailer and trailer combination
 - 80,000 lbs. Maximum gross weight²
- Commercial zone limits below apply when traveling wholly within the applicable commercial zone.
 - ¹Under Section 304.180, the total gross weight of any vehicle or combination of vehicles hauling milk from a farm to a processing facility shall not exceed 85,500 pounds while operating on highways other than interstate and defense highways.
- STATE BRIDGE STRUCTURES WITH APPROVED POSTING OF LESS THAN 80,000 LBS. GROSS WEIGHT
- WEIGH STATION

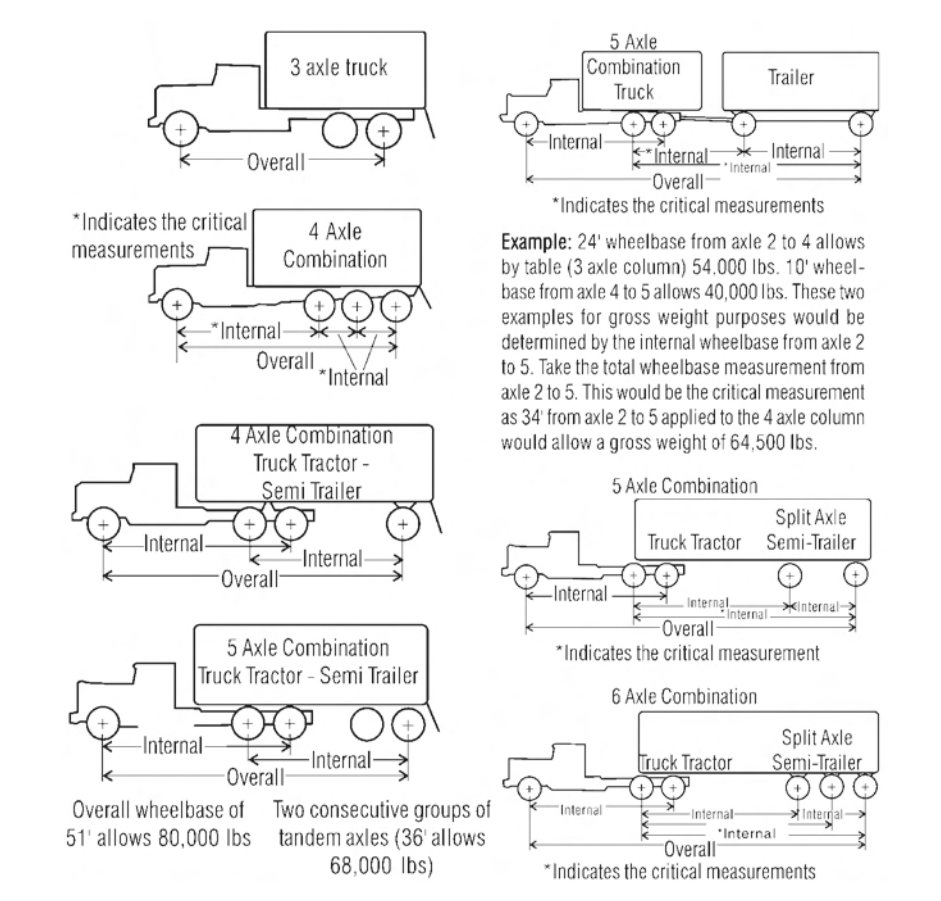
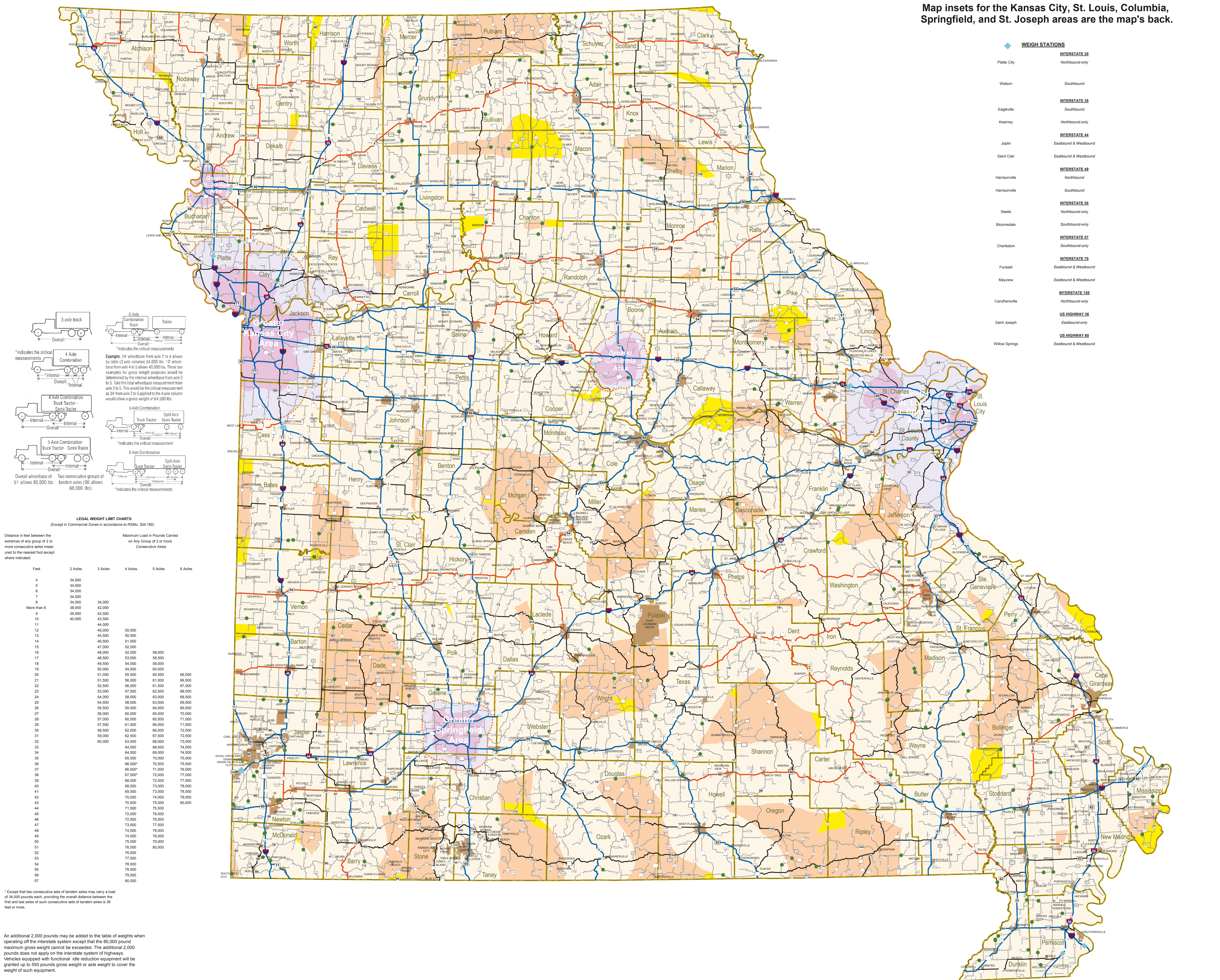
- PRIMARY HIGHWAY SYSTEM
- AREA MORE THAN 10 MILES BEYOND THE DESIGNATED HIGHWAY NETWORK
- AREA MORE THAN 10 MILES BEYOND INTERSTATES AND THE PRIMARY HIGHWAY SYSTEM

- LEGAL OPERATION OF VEHICLES WITH THE FOLLOWING LIMITS:
- 13'6" Overall Height
 - 8'6" Overall Width
 - 60'0" Overall Length for truck-tractor/semitrailer combination—applies in pink areas only
 - 55'0" Overall Length for other combinations (truck/trailer, towing, etc.) applies in yellow areas only
 - 45'0" Overall Length for single unit (length applies statewide)
 - 28'0" Overall Length of each semitrailer or trailer in a truck-tractor/semitrailer and trailer combination
 - 22,400 lbs. Maximum weight per axle
- COMMERCIAL ZONE LIMITS FOR VEHICLE HEIGHT AND WEIGHT REGULATIONS UNDER SECTION 304.190, RSMo (Supp. 2004), ON ALL ROUTES OTHER THAN INTERSTATE HIGHWAYS
- COMMERCIAL ZONE LIMITS FOR VEHICLE HEIGHT AND WEIGHT REGULATIONS UNDER SECTION 304.190, RSMo (Supp. 2004), ON ALL ROUTES INCLUDING INTERSTATE HIGHWAYS

- LEGAL OPERATION OF VEHICLES WITH THE FOLLOWING LIMITS:
- 13'0" Overall Height
 - 8'6" Overall Width
 - 53'0" Length of semitrailer in a truck-tractor/semitrailer combination
 - 65'0" Overall Length for other combinations (truck/trailer, towing, etc.)
 - 45'0" Overall Length for single unit (length applies statewide)
 - 28'0" Overall Length of each semitrailer or trailer in a truck-tractor/semitrailer and trailer combination
 - 22,400 lbs. Maximum weight per axle
- UNDER SECTION 304.180, THE TOTAL GROSS WEIGHT OF ANY VEHICLE OR COMBINATION OF VEHICLES HAULING LIVESTOCK, GRAIN, AND GRAIN CO-PRODUCTS, SHALL NOT EXCEED 85,500 POUNDS WHILE OPERATING ON MISSOURI HIGHWAYS OTHER THAN INTERSTATE.
- COMMERCIAL ZONE AREAS EXEMPT FROM AUTHORITY REGISTRATION, SOME EXCEPTIONS APPLY. SEE SECTIONS 390.020(4), 390.030.1(8), AND 390.030.1(10), RSMo(Supp. 2004), CONTACT 866-831-6277, OR VISIT WWW.MDOT.ORG/MCS

- NOTE:
- The weight is further limited by bridges signed for a lesser maximum gross weight.
 - Height is further restricted by a signed lesser vertical clearance.
 - BRIDGE WEIGHT LIMITS ARE SUBJECT TO CHANGE AND ADDITIONAL BRIDGES MAY BE POSTED AT ANY TIME.

The depictions in this map regarding dimensions of commercial zones, areas more than 10 miles beyond the designated highway network, areas more than 10 miles beyond interstates and the primary highway system, and bridge weight limits, are approximations. For official dimensions and bridge weight limits, please contact the Motor Carrier Services Division, Missouri Department of Transportation at 1-866-831-6277 or 1-573-751-7100.



LEGAL WEIGHT LIMIT CHARTS (Except in Commercial Zones in accordance to RSMo. 304.190)

Distance in feet between the extremes of any group of 2 or more consecutive axles measured to the nearest foot except where indicated	3 Axles	4 Axles	5 Axles	6 Axles
4	34,000			
5	34,000			
6	34,000			
7	34,000			
8	34,000			
9	38,000			
10	38,000			
11	44,000			
12	45,000			
13	45,000	50,000		
14	46,500	50,000		
15	47,000	52,000		
16	48,000	52,500	58,000	
17	48,500	53,500	58,500	
18	49,500	54,000	59,000	
19	50,000	54,500	60,000	
20	51,000	55,000	60,500	66,000
21	51,500	56,000	61,000	66,500
22	52,500	56,500	61,500	67,000
23	53,000	57,500	62,500	68,000
24	54,000	58,000	63,000	68,500
25	54,500	58,500	63,500	69,000
26	55,500	59,500	64,000	69,500
27	56,000	60,000	65,000	70,000
28	57,000	60,500	65,500	71,000
29	57,500	61,500	66,000	71,500
30	58,500	62,000	66,500	72,000
31	59,000	62,500	67,500	72,500
32	60,000	63,500	68,000	73,000
33	64,000	68,500	74,000	
34	64,500	69,000	74,500	
35	65,500	70,000	75,000	
36	66,000*	70,500	75,500	
37	66,500*	71,000	76,000	
38	67,500*	72,000	77,000	
39	68,000	72,500	77,500	
40	68,500	73,000	78,000	
41	69,500	73,500	78,500	
42	70,000	74,000	79,000	
43	70,500	75,000	79,500	
44	71,500	75,500	80,000	
45	72,000	76,000		
46	72,500	76,500		
47	73,500	77,500		
48	74,000	78,000		
49	74,500	78,500		
50	75,500	79,000		
51	76,000	80,000		
52	76,500			
53	77,000			
54	78,000			
55	78,500			
56	79,500			
57	80,000			

*Except that two consecutive sets of tandem axles may carry a load of 34,000 pounds each, providing the overall distance between the first and last axes of such consecutive sets of tandem axles is 36 feet or more.

An additional 2,000 pounds may be added to the table of weights when operating off the interstate system except that the 80,000 pound maximum gross weight cannot be exceeded. The additional 2,000 pounds does not apply on the interstate system of highways. Vehicles equipped with functional tire reduction equipment will be granted up to 550 pounds gross weight or axle weight to cover the weight of such equipment.

