

SWEDGE ANCHOR BOLT DETAIL

GENERAL NOTES:

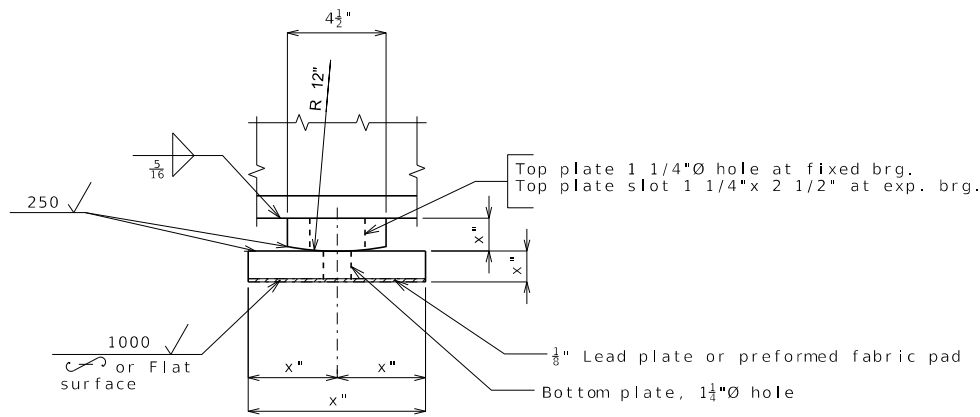
Anchor bolts for Type C bearings shall be 1"Ø ASTM F1554 Grade 55 swedged bolts, with no heads or nuts and shall extend 10" into the concrete. Swedging shall be 1" less than the extension into the concrete. Anchor bolts shall be set in the drilling holes or in the anchor bolt wells and grouted prior to the erection of steel. The top of anchor bolts shall be set approximately 1/4" below the top of bearing.

Anchor bolts shall be coated with a minimum of two coats of inorganic zinc primer to provide a total dry thickness of 4 mils minimum, 6 mils maximum, or galvanized in accordance with ASTM F2329.

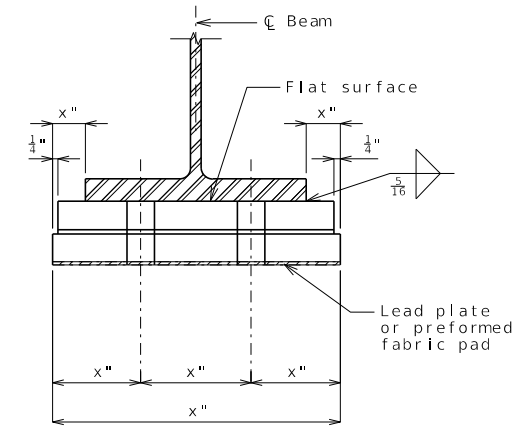
Weight of the anchor bolts for bearings are included in the weight of the Fabricated Structural Steel.

∞ Indicates machine finish surface.

Shop drawings are not required for the lead plates and the preformed fabric pads.



SIDE VIEW



END VIEW

TYPE C BEARINGS

(Estimated Weight pounds)

DATE PREPARED	
5/12/2026	
ROUTE	STATE
	MO
DISTRICT	SHEET NO.
	1
COUNTY	
JOB NO.	
CONTRACT ID.	
PROJECT NO.	
BRIDGE NO.	

DESCRIPTION	DATE

MISSOURI HIGHWAYS AND TRANSPORTATION COMMISSION



105 WEST CAPITOL
JEFFERSON CITY, MO 65102
1-888-ASK-MODOT (1-888-275-6636)

Detailed
Checked

Note: This drawing is not to scale. Follow dimensions.

Sheet No. of