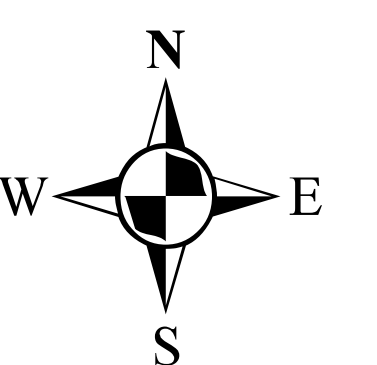


Functional Classification System

ST. LOUIS
 St. Charles County
 Franklin County
 Jefferson County
 St. Louis County
 St. Louis City
 Missouri

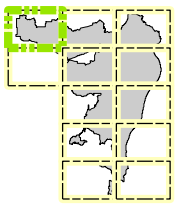
FUNCTIONAL CLASS	
Interstate	Blue line
Other Freeway and Expressway	Orange line
Other Principal Arterial	Red line
Minor Arterial	Green line
Major Collector	Purple line
Minor Collector	Yellow line
Local	Grey line
CITY	Light grey shaded area
URBAN AREA	Dark grey shaded area



Functional Classification System

ST. LOUIS

St. Charles County
Franklin County
Jefferson County
St. Louis County
St. Louis City
Missouri



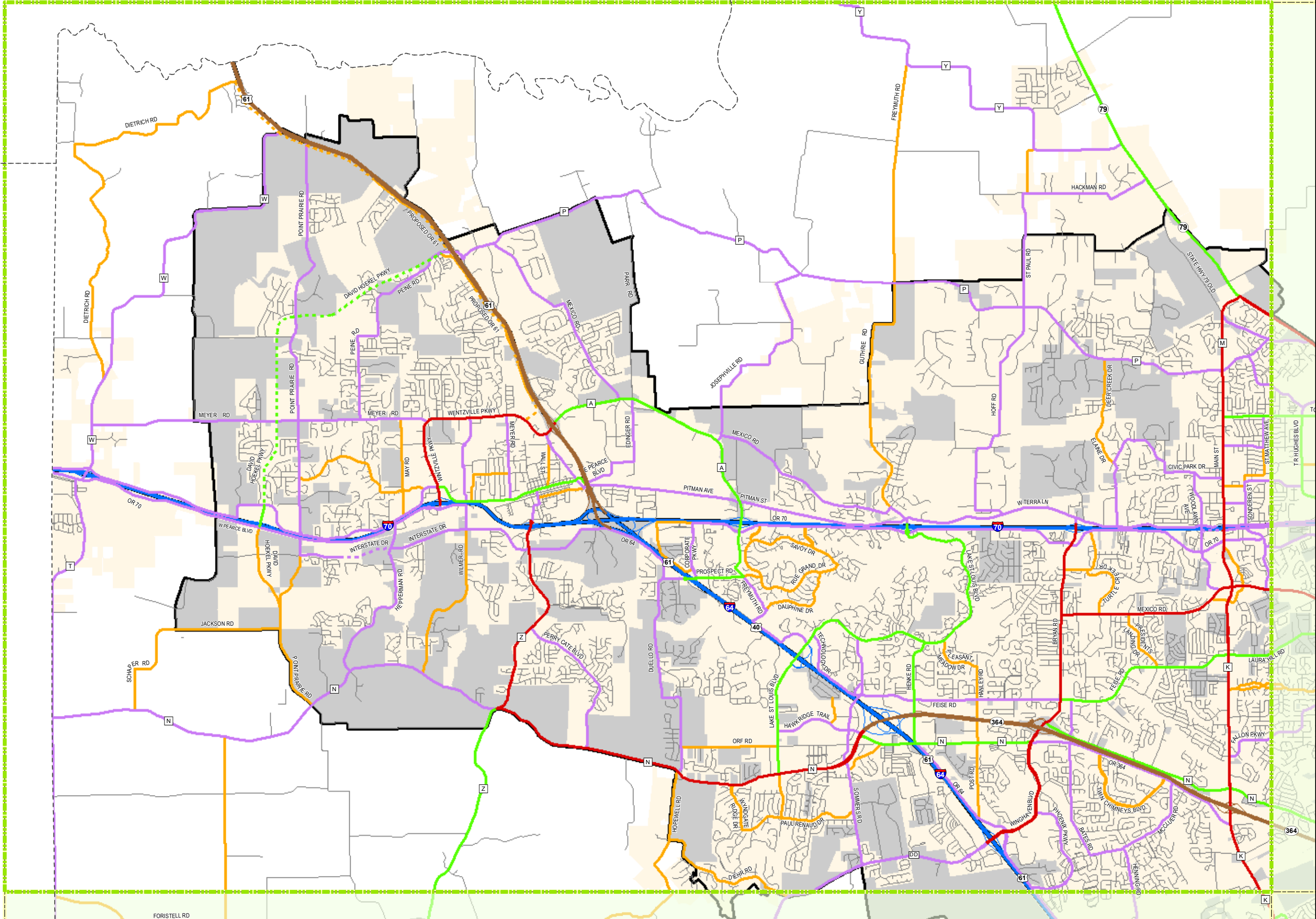
Functional Class

- Interstate
- Freeway and Expressway
- Other Principal Arterial
- Minor Arterial
- Major Collector
- Minor Collector
- Local
- City
- Urban Area



Transportation Planning
105 W. Capitol Ave.
Jefferson City, MO 65102
Phone (573) 526-8055
Fax (573) 526-8052

Approved June 12, 2024

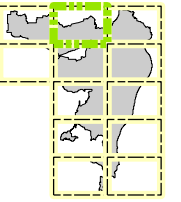


Functional Classification System

ST. LOUIS

St. Charles County
Franklin County
Jefferson County
St. Louis County
St. Louis City
Missouri

Page
2



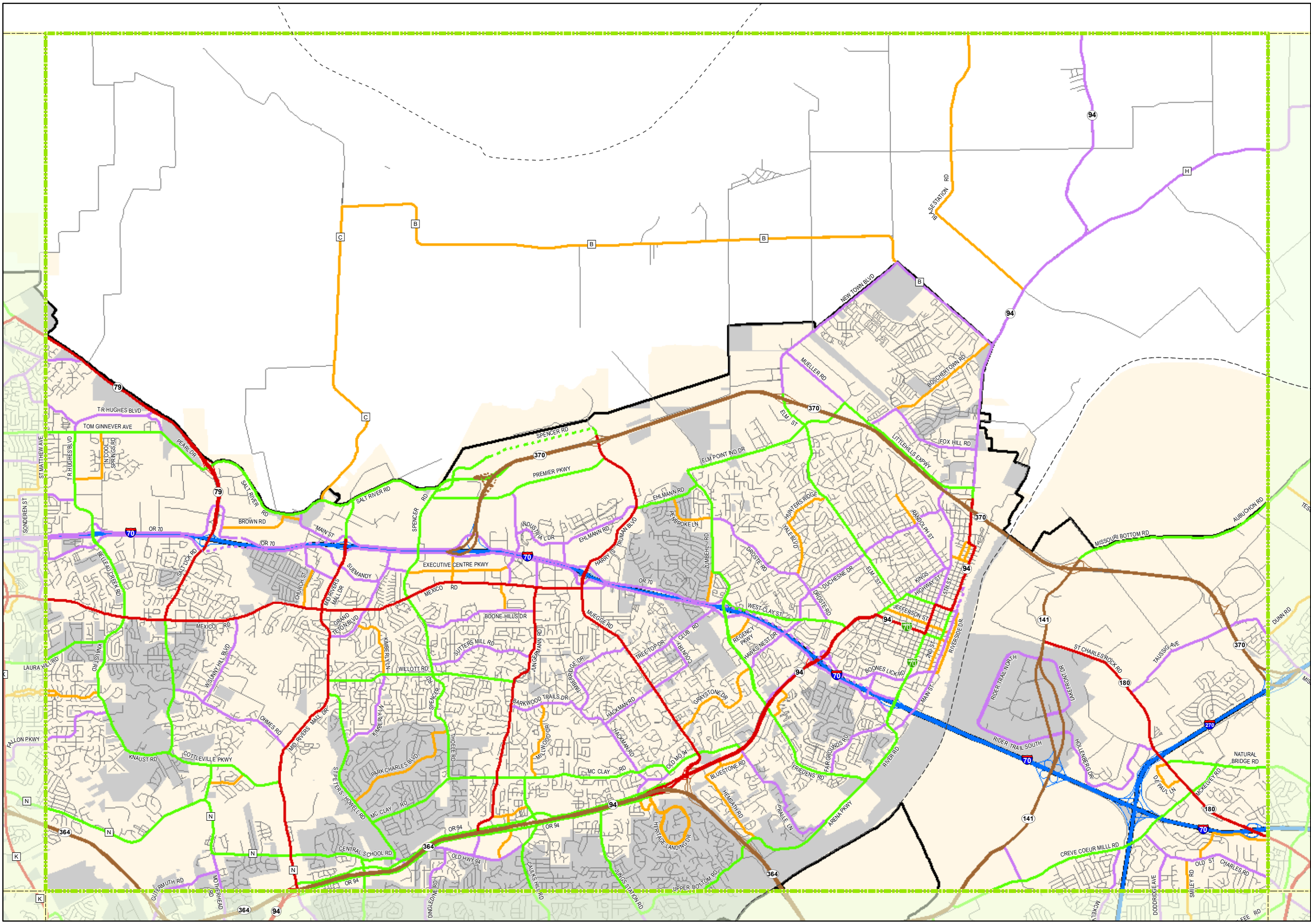
Functional Class

- Interstate
- Freeway and Expressway
- Other Principal Arterial
- Minor Arterial
- Major Collector
- Minor Collector
- Local
- City
- Urban Area



Transportation Planning
105 W. Capitol Ave.
Jefferson City, MO 65102
Phone (573) 526-8055
Fax (573) 526-8052

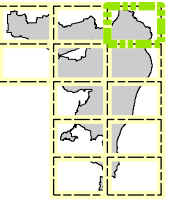
Approved June 12, 2024



Functional Classification System

ST. LOUIS

St. Charles County
Franklin County
Jefferson County
St. Louis County
St. Louis City
Missouri



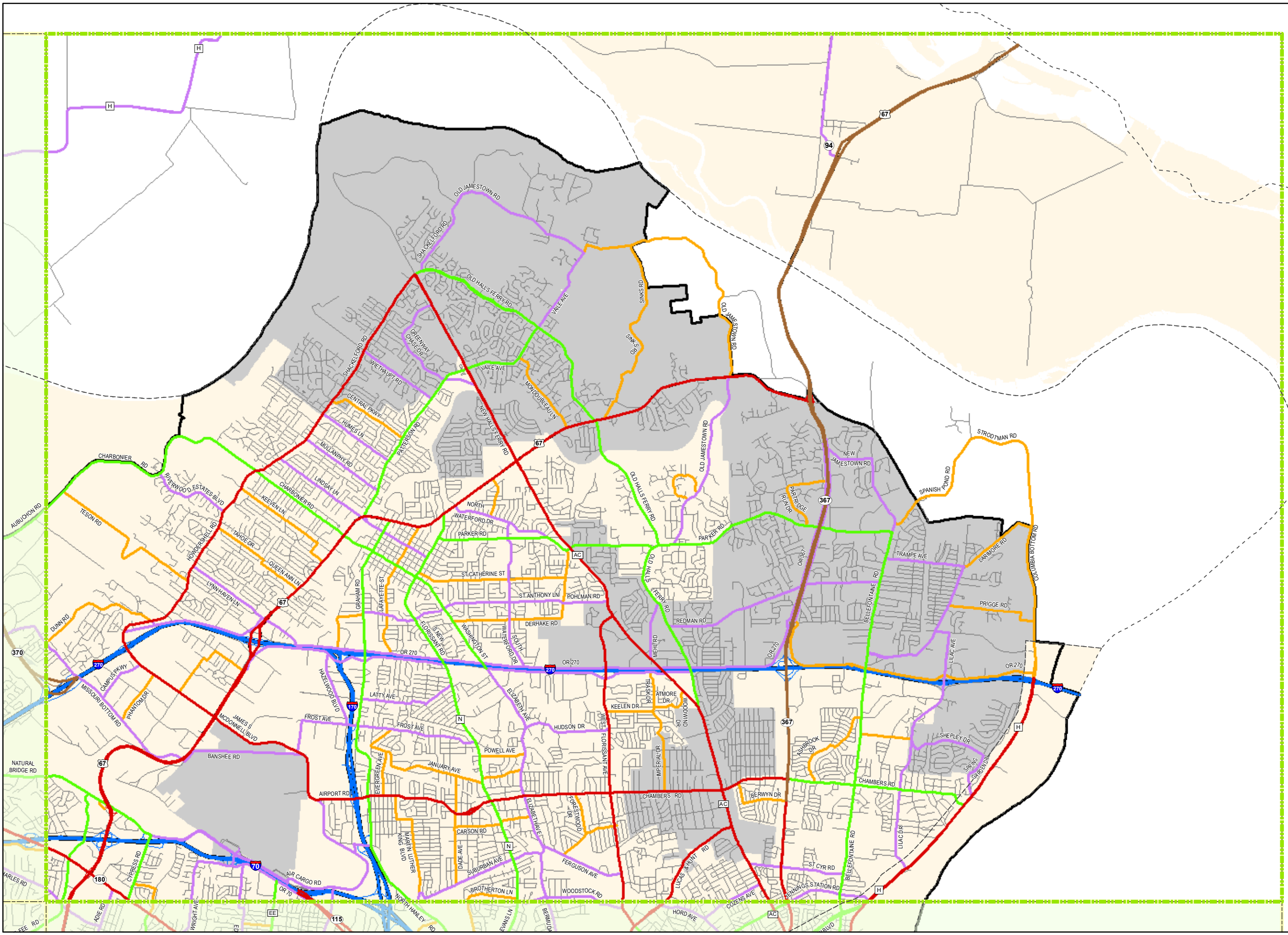
Functional Class

- Interstate
- Freeway and Expressway
- Other Principal Arterial
- Minor Arterial
- Major Collector
- Minor Collector
- Local
- City
- Urban Area



Transportation Planning
105 W. Capitol Ave.
Jefferson City, MO 65102
Phone (573) 526-8055
Fax (573) 526-8052

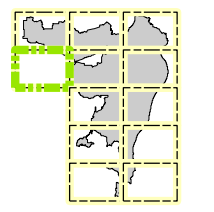
Approved June 12, 2024



Functional Classification System

ST. LOUIS

St. Charles County
Franklin County
Jefferson County
St. Louis County
St. Louis City
Missouri



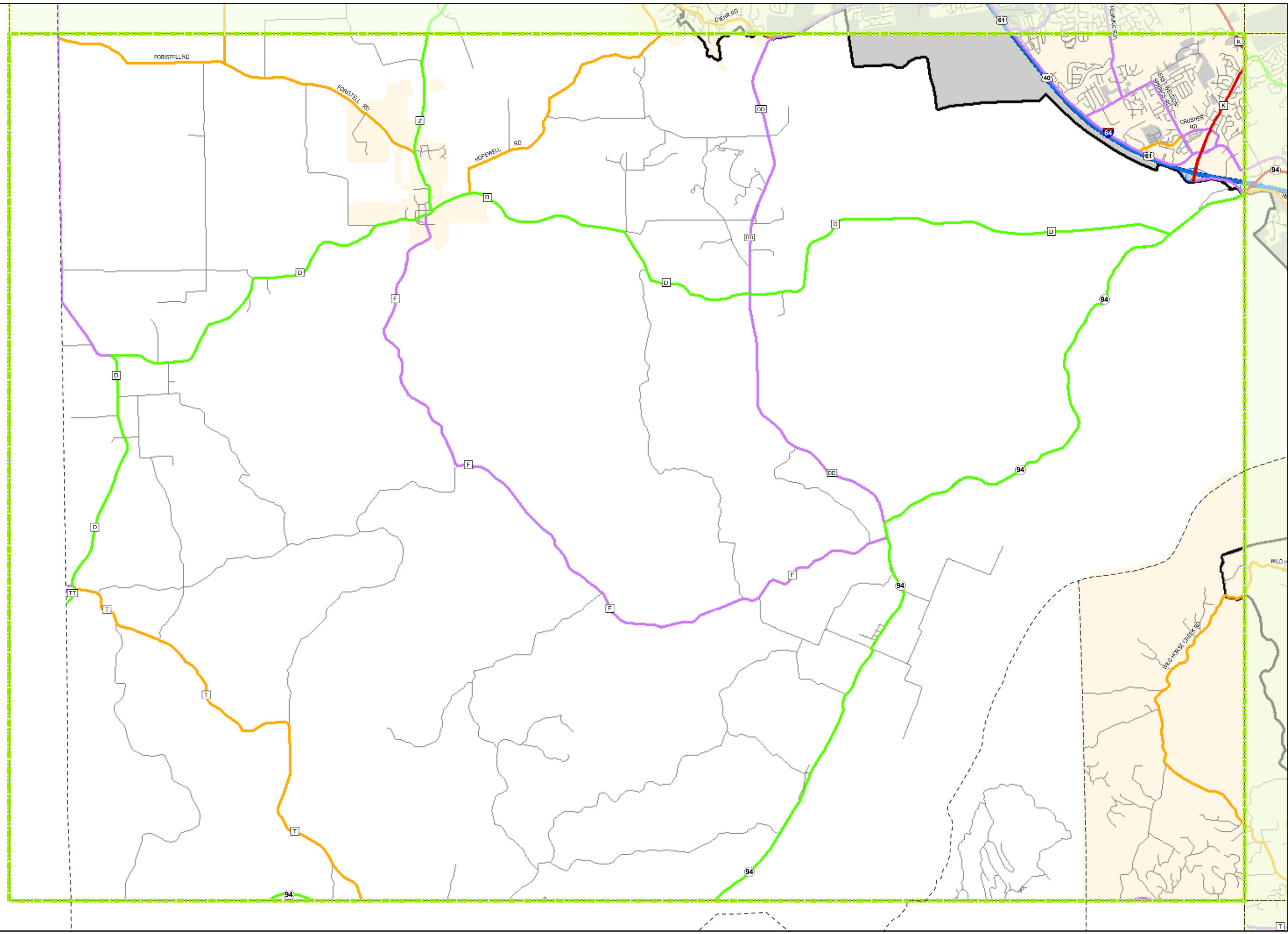
Functional Class

- Interstate
- Freeway and Expressway
- Other Principal Arterial
- Minor Arterial
- Major Collector
- Minor Collector
- Local
- City
- Urban Area

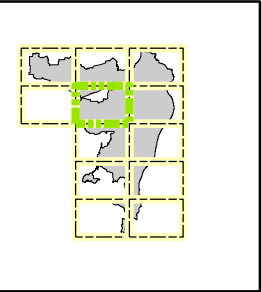


Transportation Planning
105 W. Capitol Ave.
Jefferson City, MO 65102
Phone (573) 526-8055
Fax (573) 526-8052

Approved June 12, 2024



Functional Classification System
ST. LOUIS
 St. Charles County
 Franklin County
 Jefferson County
 St. Louis County
 St. Louis City
 Missouri



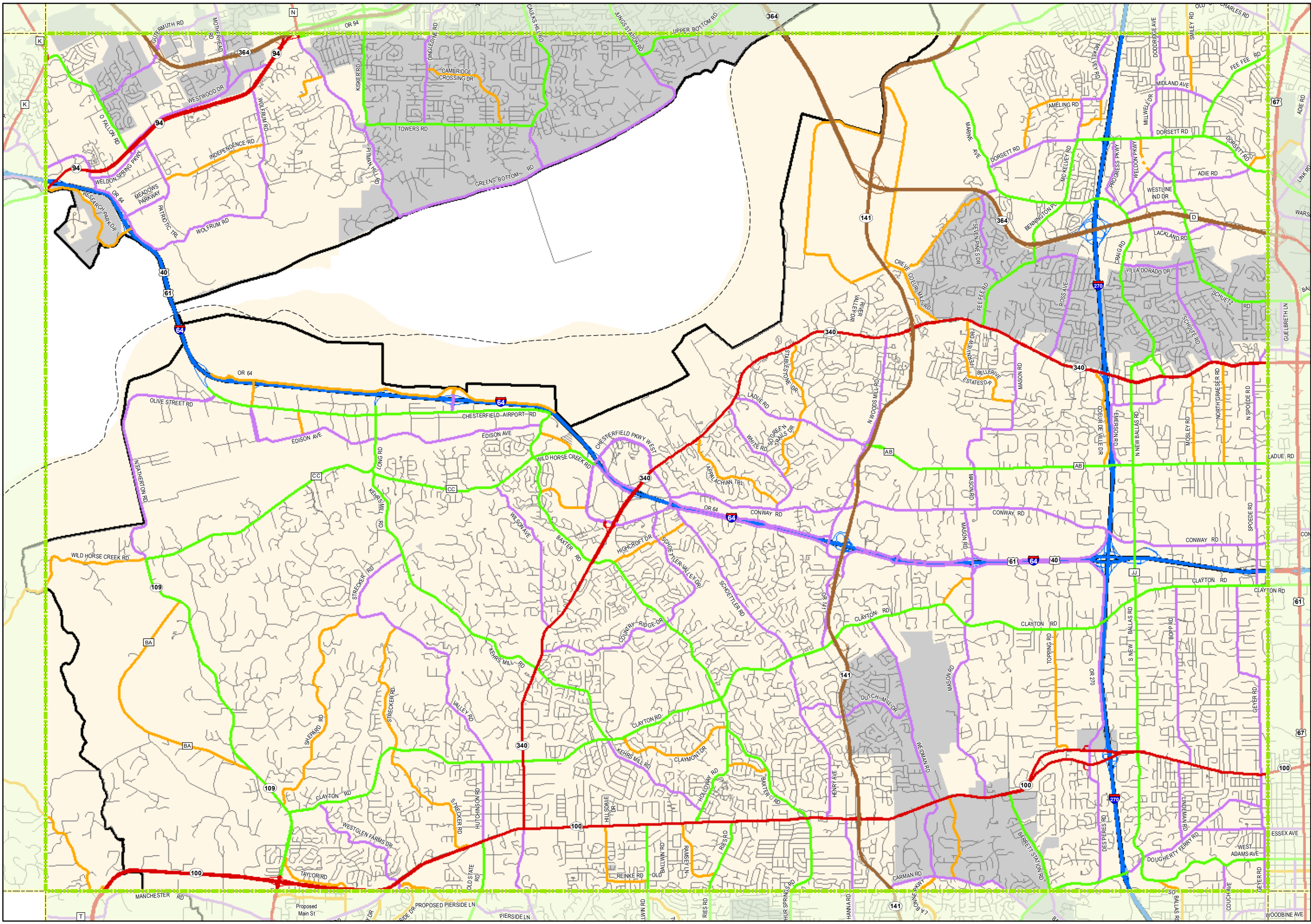
Functional Class

- Interstate
- Freeway and Expressway
- Other Principal Arterial
- Minor Arterial
- Major Collector
- Minor Collector
- Local
- City
- Urban Area



Transportation Planning
 105 W. Capitol Ave.
 Jefferson City, MO 65102
 Phone (573) 526-8055
 Fax (573) 526-8052

Approved June 12, 2024

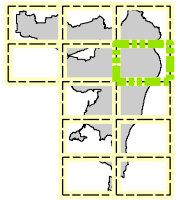


Functional Classification System

ST. LOUIS

St. Charles County
Franklin County
Jefferson County
St. Louis County
St. Louis City
Missouri

Page
6



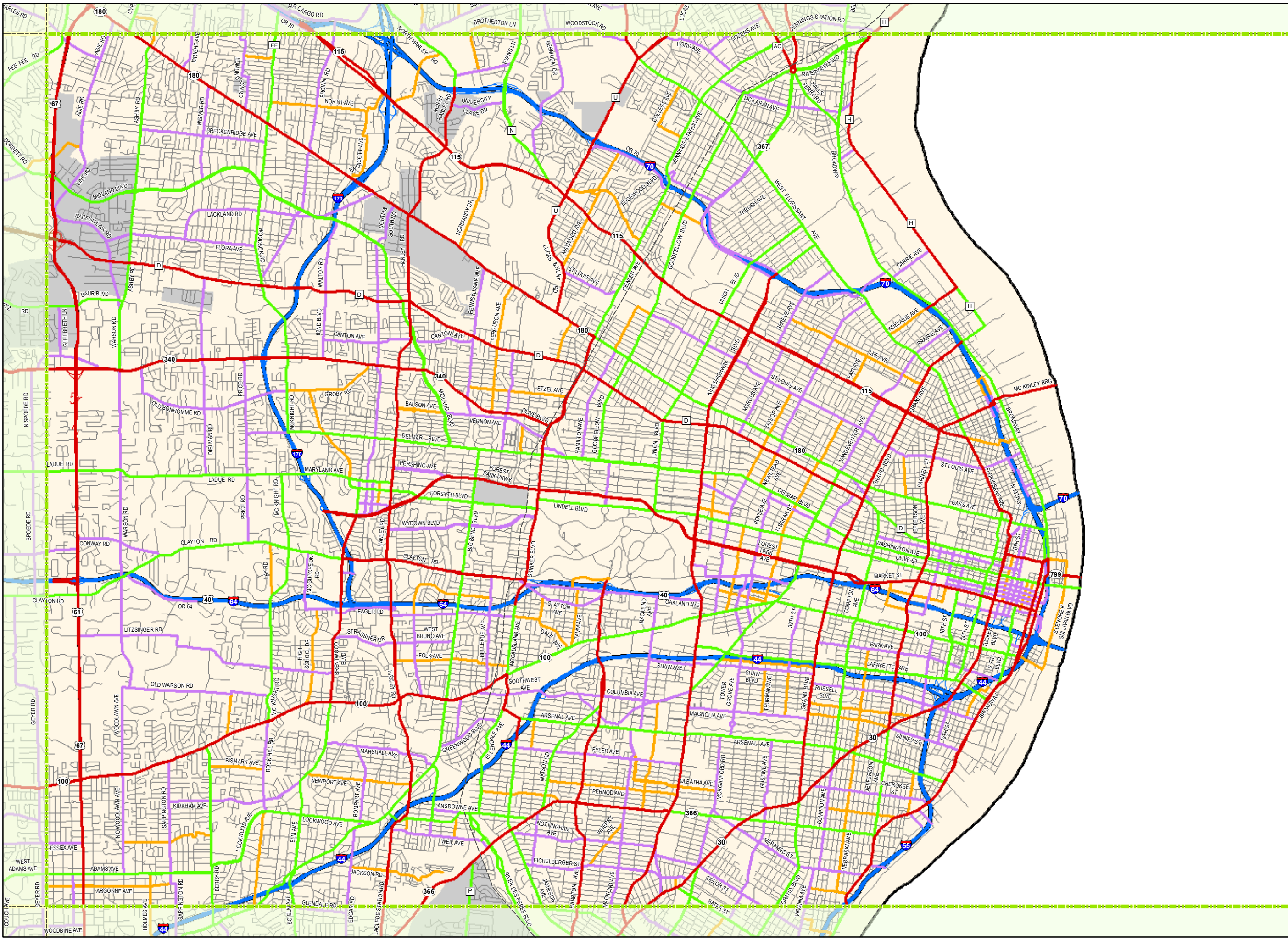
Functional Class

- Interstate
- Freeway and Expressway
- Other Principal Arterial
- Minor Arterial
- Major Collector
- Minor Collector
- Local
- City
- Urban Area

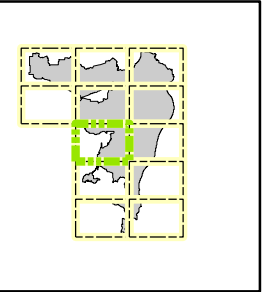


Transportation Planning
105 W. Capitol Ave.
Jefferson City, MO 65102
Phone (573) 526-8055
Fax (573) 526-8052

Approved June 12, 2024



Functional Classification System
ST. LOUIS
 St. Charles County
 Franklin County
 Jefferson County
 St. Louis County
 St. Louis City
 Missouri



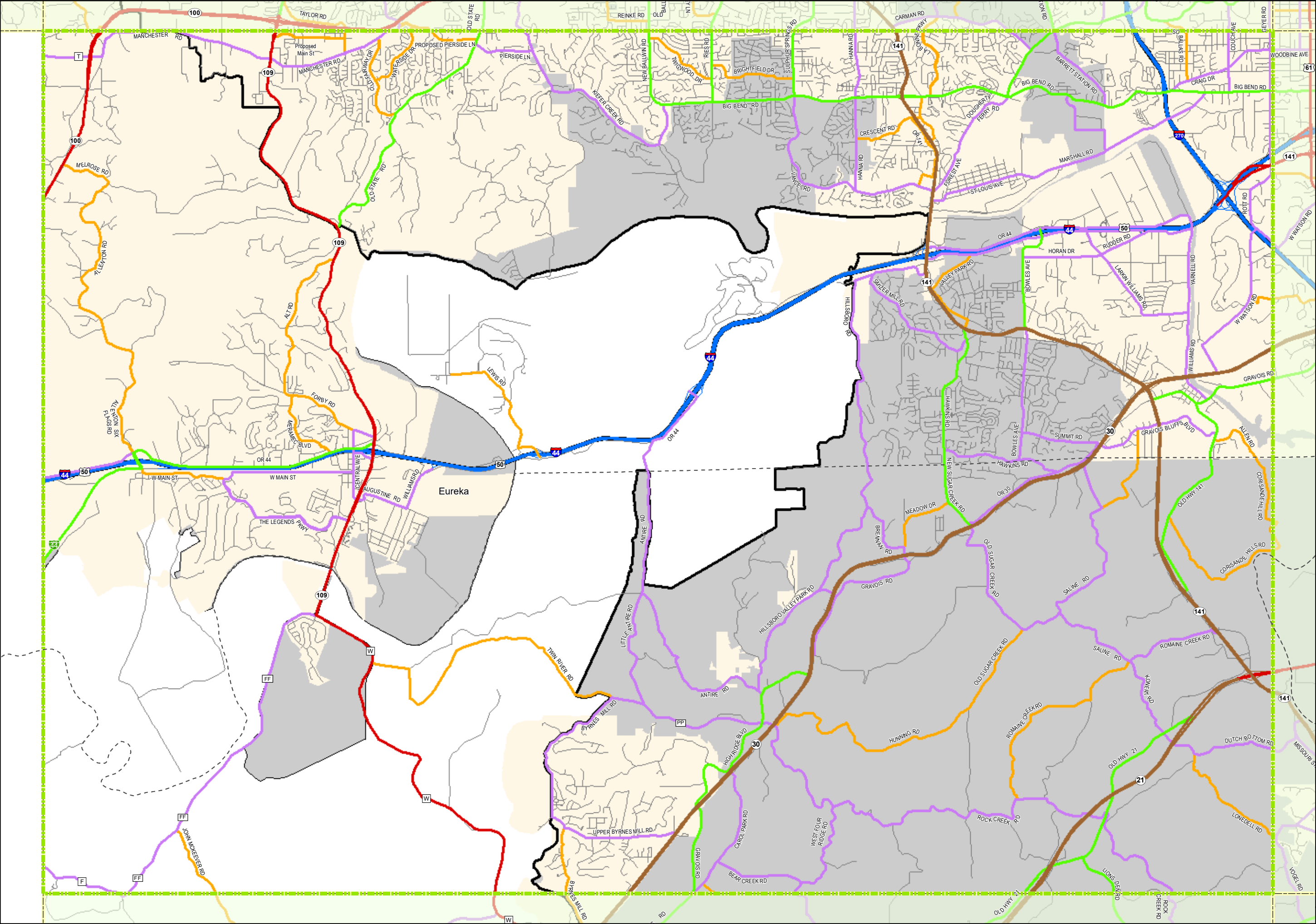
Functional Class

- Interstate
- Freeway and Expressway
- Other Principal Arterial
- Minor Arterial
- Major Collector
- Minor Collector
- Local
- City
- Urban Area



Transportation Planning
 105 W. Capitol Ave.
 Jefferson City, MO 65102
 Phone (573) 526-8055
 Fax (573) 526-8052

Approved June 12, 2024



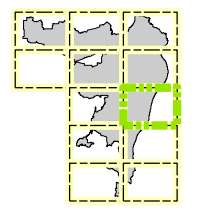
Functional Classification System

ST. LOUIS

St. Charles County
Franklin County
Jefferson County
St. Louis County
St. Louis City

Missouri

Page
8



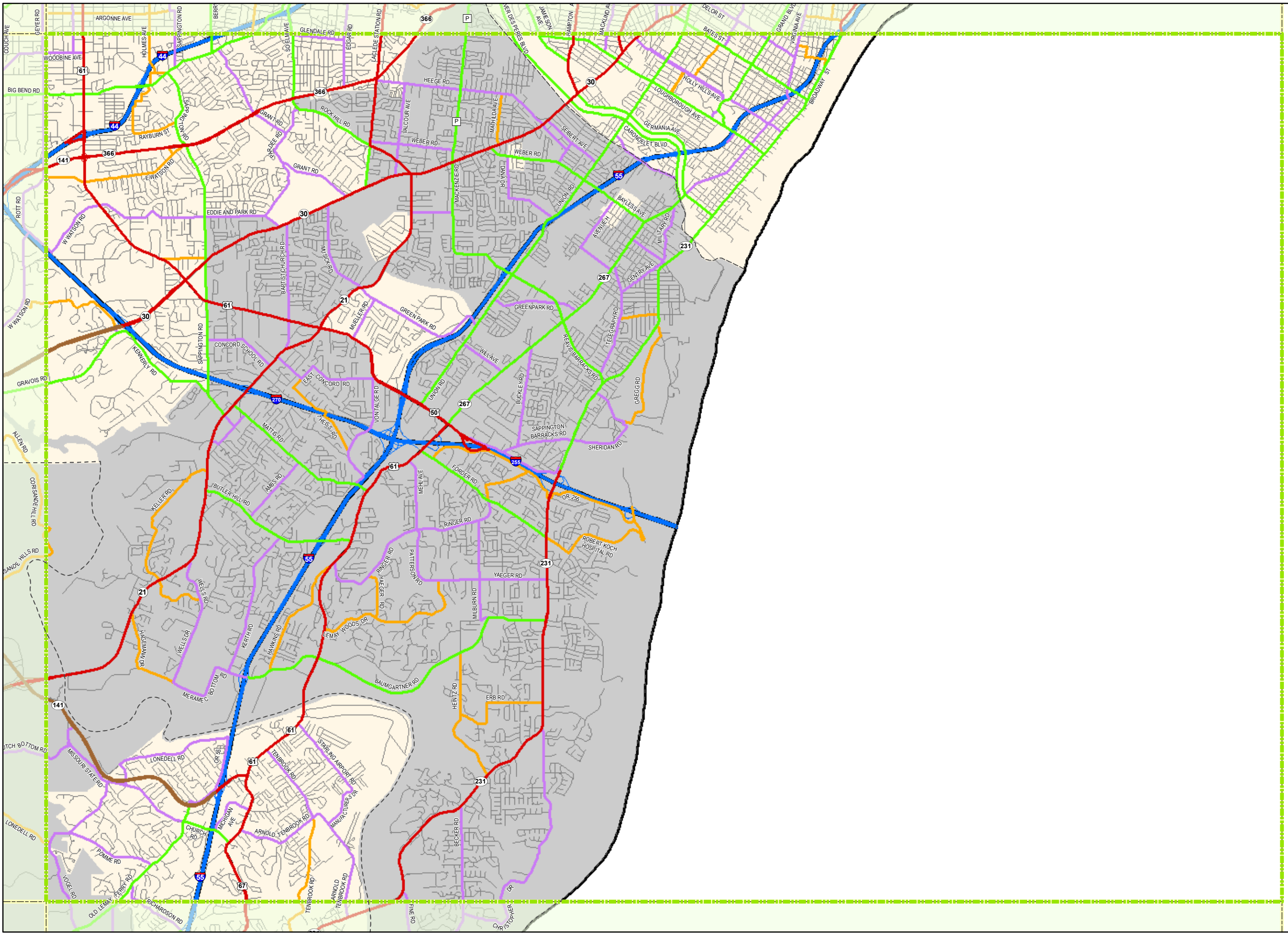
Functional Class

- Interstate
- Freeway and Expressway
- Other Principal Arterial
- Minor Arterial
- Major Collector
- Minor Collector
- Local
- City
- Urban Area

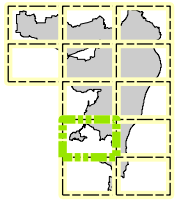


Transportation Planning
105 W. Capitol Ave.
Jefferson City, MO 65102
Phone (573) 526-8055
Fax (573) 526-8052

Approved June 12, 2024



Functional Classification System
ST. LOUIS
 St. Charles County
 Franklin County
 Jefferson County
 St. Louis County
 St. Louis City
 Missouri



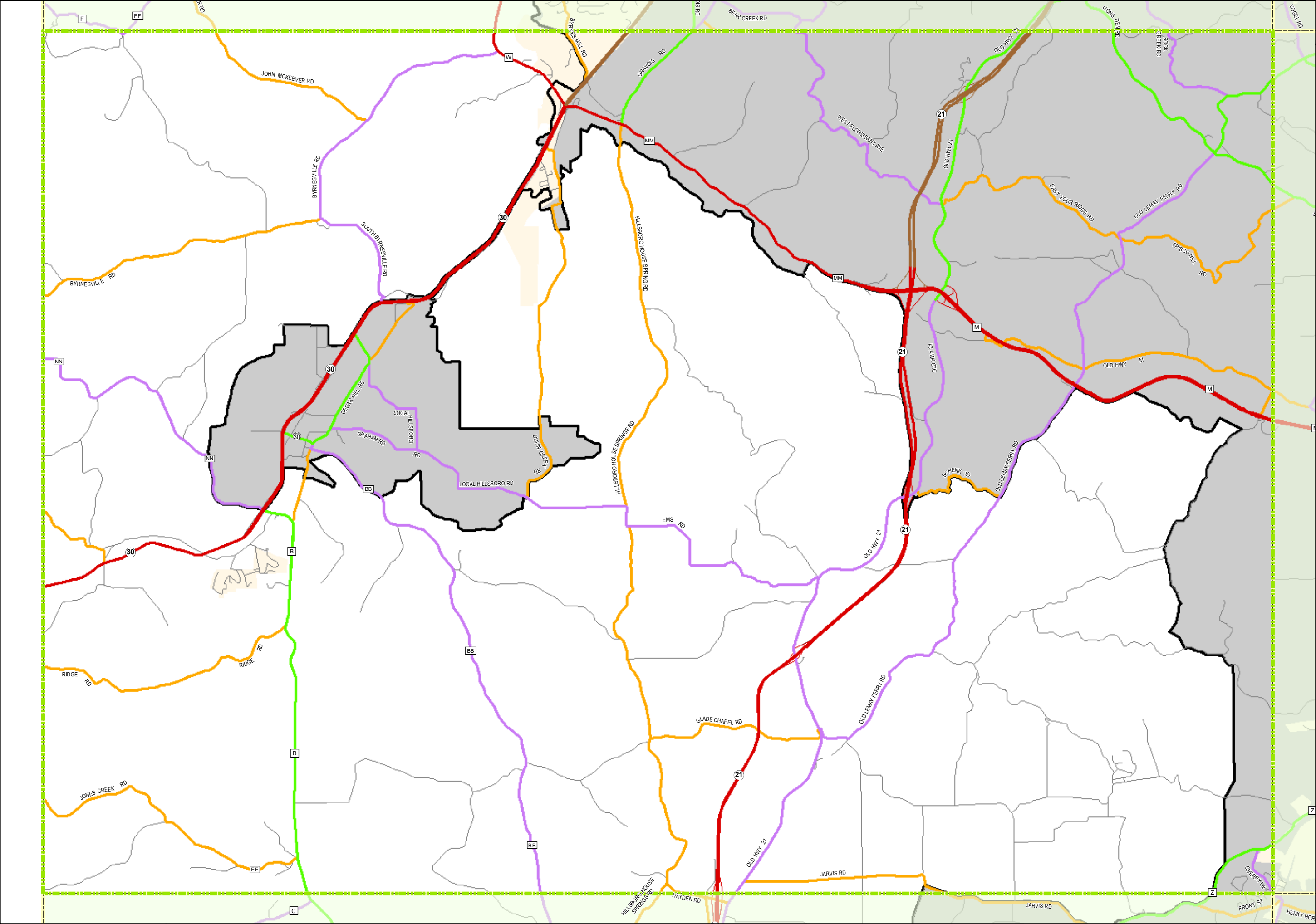
Functional Class

- Interstate
- Freeway and Expressway
- Other Principal Arterial
- Minor Arterial
- Major Collector
- Minor Collector
- Local
- City
- Urban Area



Transportation Planning
 105 W. Capitol Ave.
 Jefferson City, MO 65102
 Phone (573) 526-8055
 Fax (573) 526-8052

Approved June 12, 2024



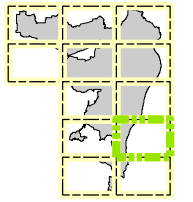
Functional Classification System

ST. LOUIS

St. Charles County
Franklin County
Jefferson County
St. Louis County
St. Louis City

Missouri

Page
10



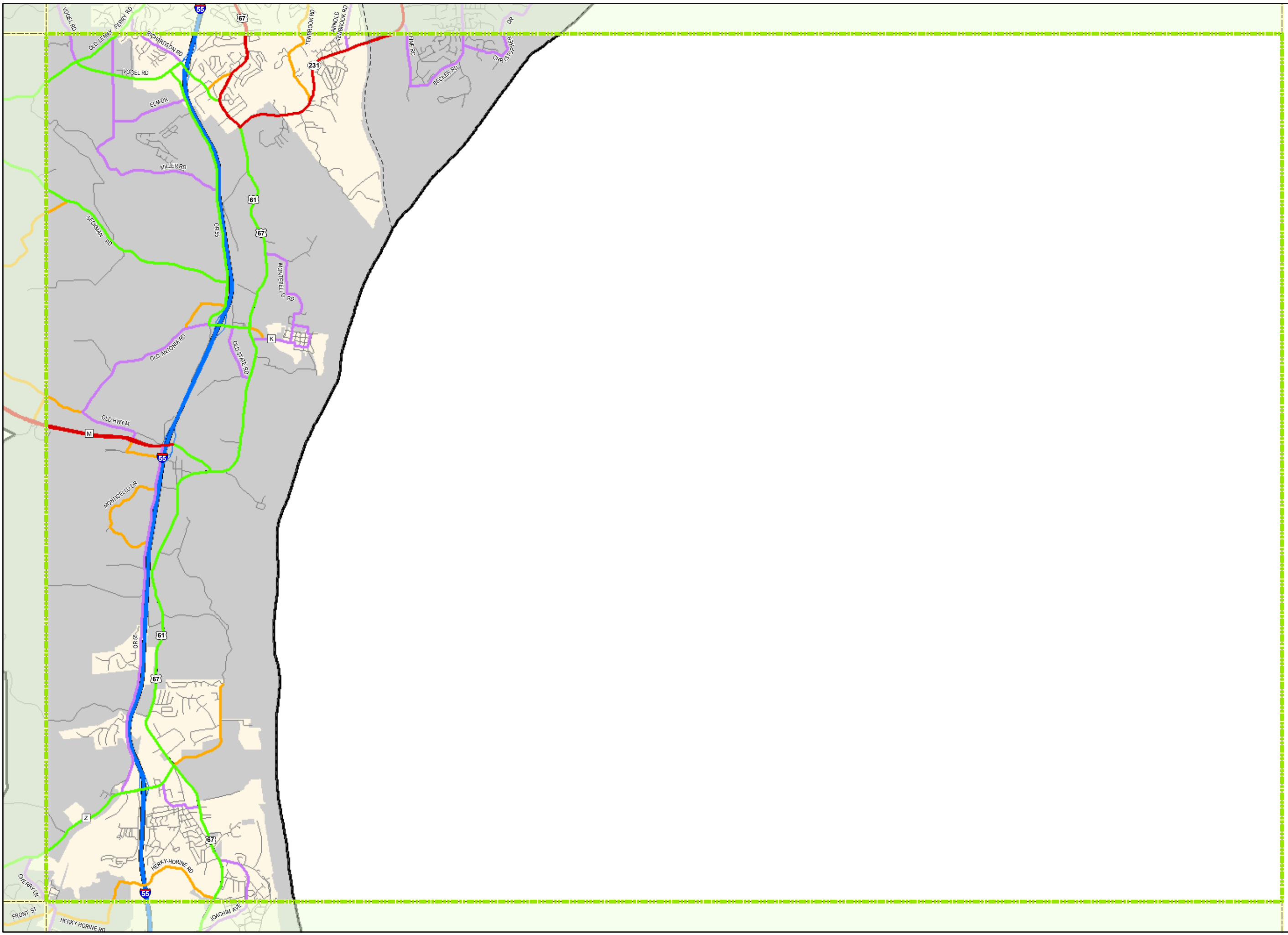
Functional Class

- Interstate
- Freeway and Expressway
- Other Principal Arterial
- Minor Arterial
- Major Collector
- Minor Collector
- Local
- City
- Urban Area



Transportation Planning
105 W. Capitol Ave.
Jefferson City, MO 65102
Phone (573) 526-8055
Fax (573) 526-8052

Approved June 12, 2024

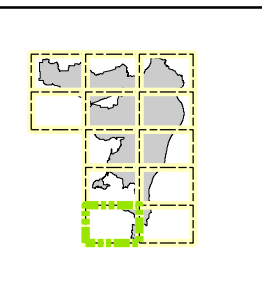


Functional Classification System

ST. LOUIS

St. Charles County
Franklin County
Jefferson County
St. Louis County
St. Louis City
Missouri

Page
11



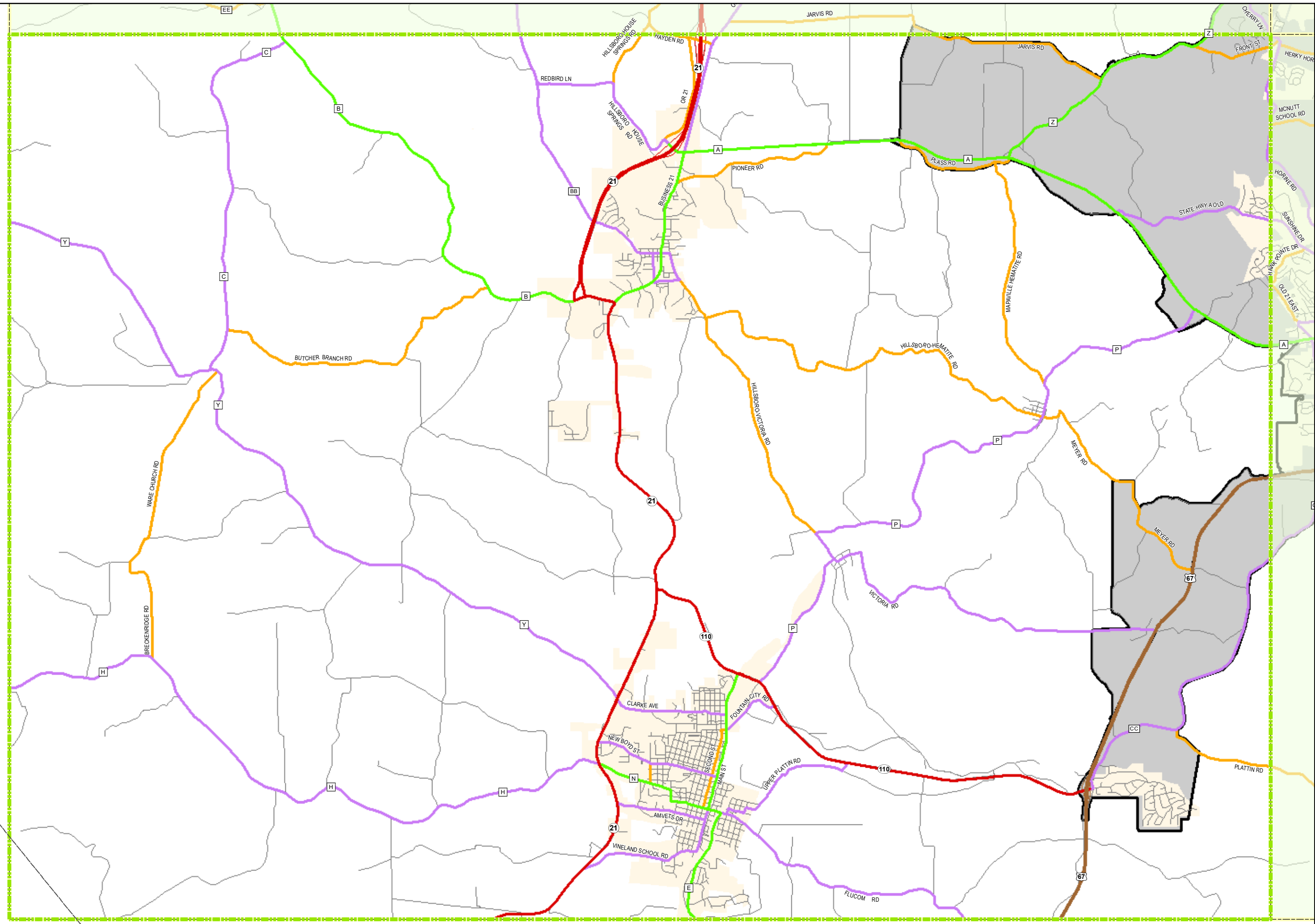
Functional Class

- Interstate
- Freeway and Expressway
- Other Principal Arterial
- Minor Arterial
- Major Collector
- Minor Collector
- Local
- City
- Urban Area



Transportation Planning
105 W. Capitol Ave.
Jefferson City, MO 65102
Phone (573) 526-8055
Fax (573) 526-8052

Approved June 12, 2024



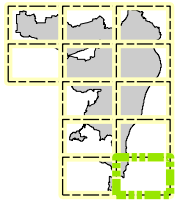
Functional Classification System

ST. LOUIS

St. Charles County
Franklin County
Jefferson County
St. Louis County
St. Louis City

Missouri

Page
12



Functional Class

- Interstate
- Freeway and Expressway
- Other Principal Arterial
- Minor Arterial
- Major Collector
- Minor Collector
- Local
- City
- Urban Area



Transportation Planning
105 W. Capitol Ave.
Jefferson City, MO 65102
Phone (573) 526-8055
Fax (573) 526-8052

Approved June 12, 2024

