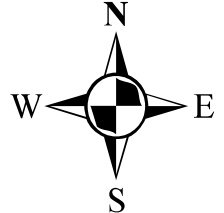


# Functional Classification System

## SPRINGFIELD

Greene County  
Christian County

Missouri



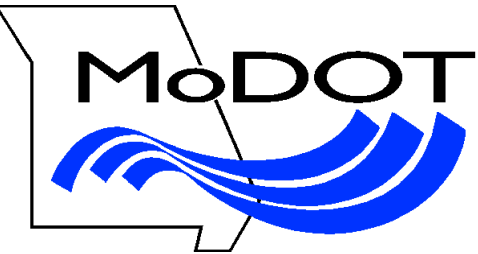
**FUNCTIONAL CLASS**

- Interstate
- Other Freeway and Expressway
- Other Principal Arterial
- Minor Arterial
- Major Collector
- Minor Collector
- Local

**CITY**

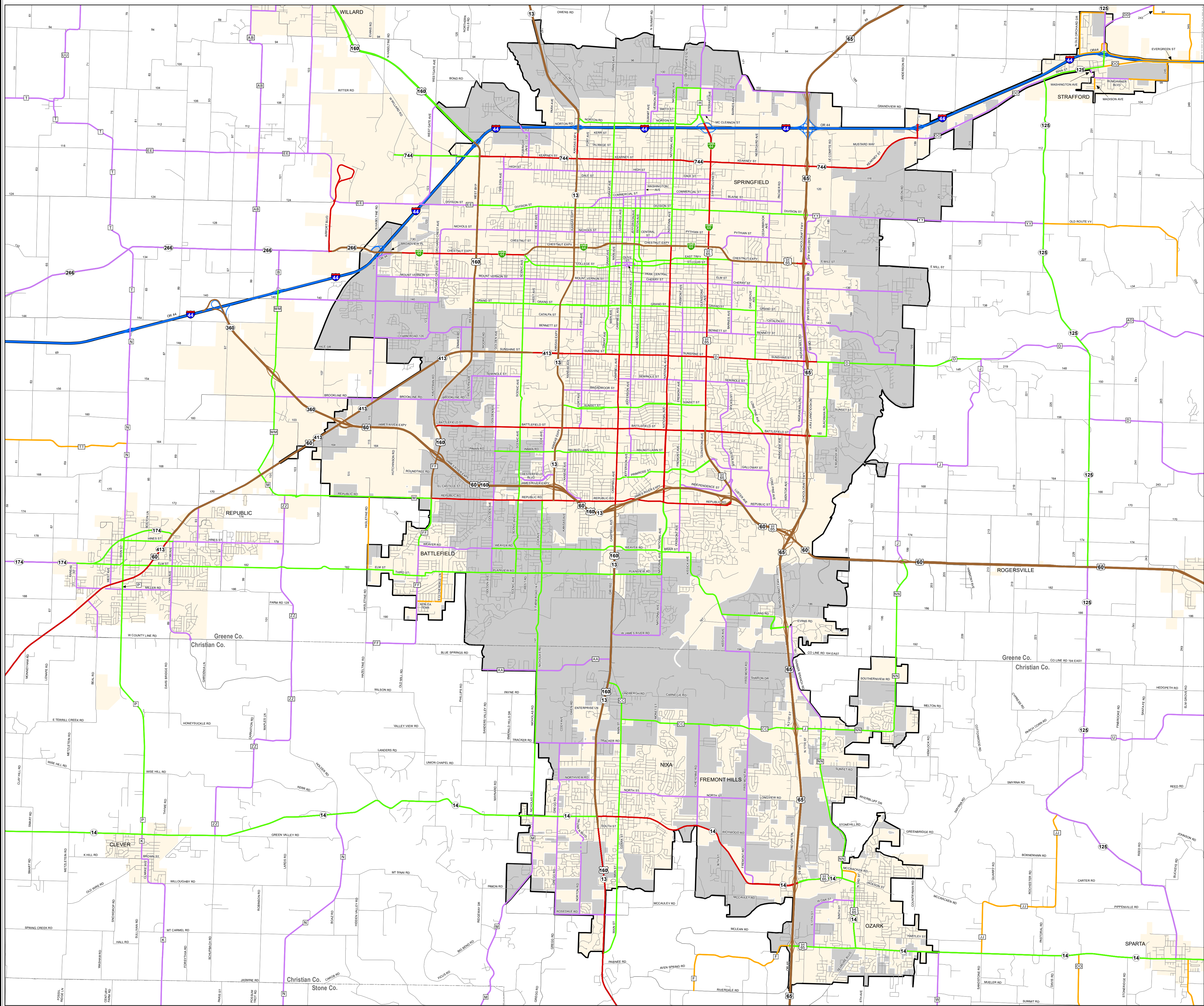
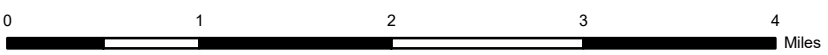
**URBAN AREA**

Federal-Aid highways exclude local roads and rural minor collectors.



**Transportation Planning**  
105 W. Capitol Ave.  
Jefferson City, MO 65102  
Phone (573) 526-8055  
Fax (573) 526-8052

Approved January 10, 2024



Copyright 2023 by Missouri Department of Transportation. All rights reserved. Springfield, MO