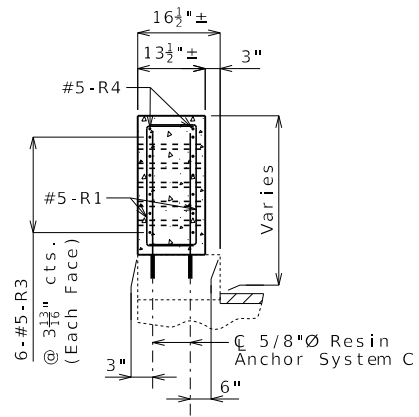
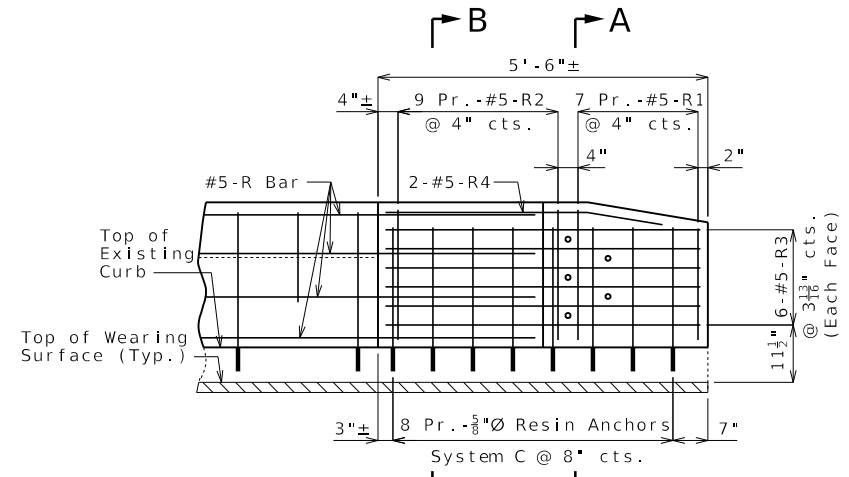


ELEVATION SHOWING REINFORCEMENT

(Right End Post at End Bent No. similar)

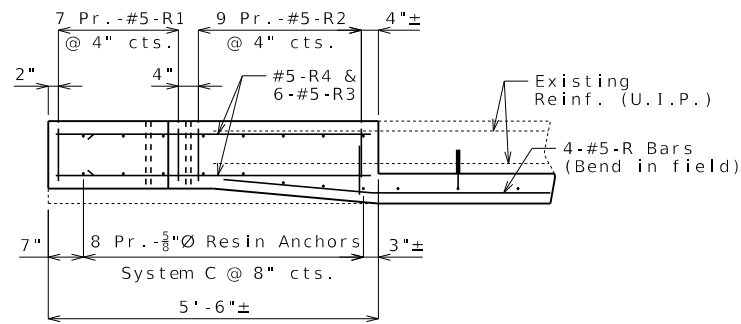


SECTION A-A



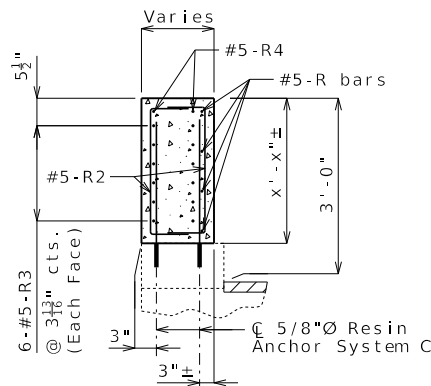
ELEVATION SHOWING REINFORCEMENT

(Right End Post at End Bent No. 1 similar)

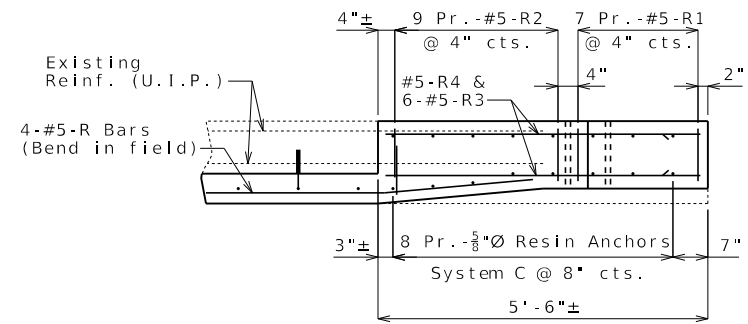


PLAN SHOWING REINFORCEMENT

LEFT END POST AT END BENT NO. 1

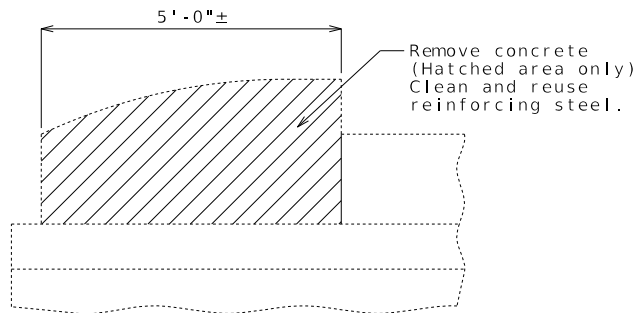


SECTION B-B



PLAN SHOWING REINFORCEMENT

LEFT END POST AT END BENT NO. 1



PART ELEVATION SHOWING END POST CONCRETE REMOVAL

Cost of removing existing end posts will be considered completely covered by the contract unit price for Curb Blockout.

3'-0" Curb Blockout

These details are meant to be used as a starting point only. Modify as needed.

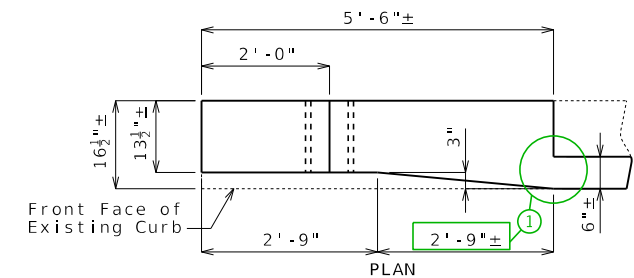
- ① Taper front face as gradually as possible, while maintaining 6" minimum thickness of blockout at the end of the existing parapet. 2'-9" maximum taper length.
 - ② Holes may be shifted 12" closer to the end (8" instead of 20") to avoid attaching a rail post to the top of backwall. All other dimensions and reinforcement remain the same.
- Longitudinal R bars shall extend 2'-7" minimum into new end post.

Notes:

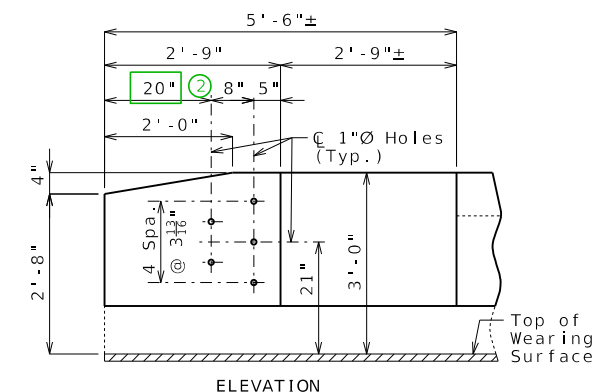
Work this sheet with Sheet No. .

For details of resin anchors, see Sheet No. .

Resin anchors shall be shifted or bent in field to clear one-inch diameter holes by at least 1/2 inch.



PLAN



ELEVATION

DETAILS OF END POST AND GUARD RAIL ATTACHMENT

DATE PREPARED		12/30/2024	
ROUTE	STATE	MO	
DISTRICT	SHEET NO.	2	
COUNTY			
JOB NO.			
CONTRACT ID.			
PROJECT NO.			
BRIDGE NO.			

DESCRIPTION	DATE

MISSOURI HIGHWAYS AND TRANSPORTATION COMMISSION

105 WEST CAPITOL
JEFFERSON CITY, MO 65102
1-888-ASK-MODOT (1-888-275-6636)

CURB BLOCKOUT AT END BENTS