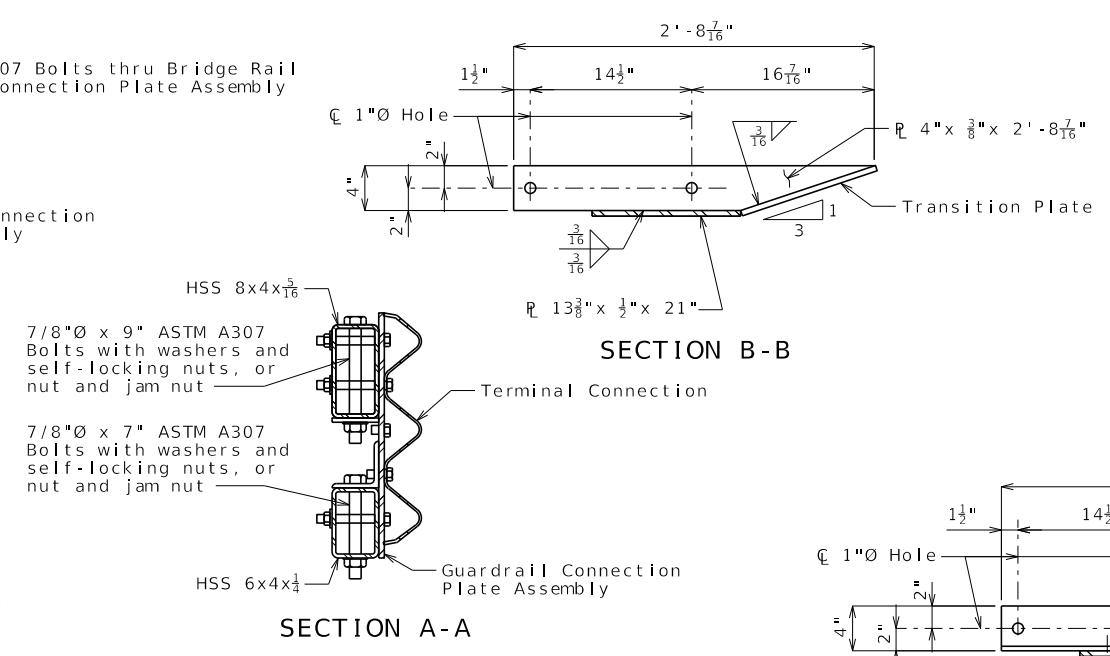
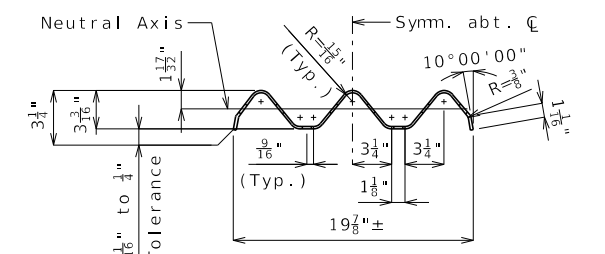


DETAIL A
(Part elevation of bridge anchor section)

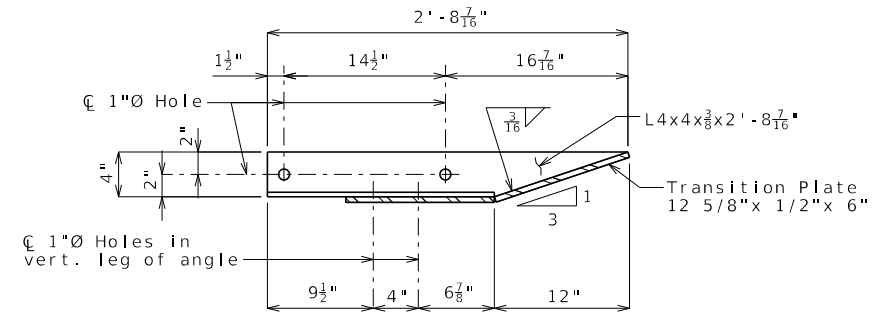


SECTION A-A

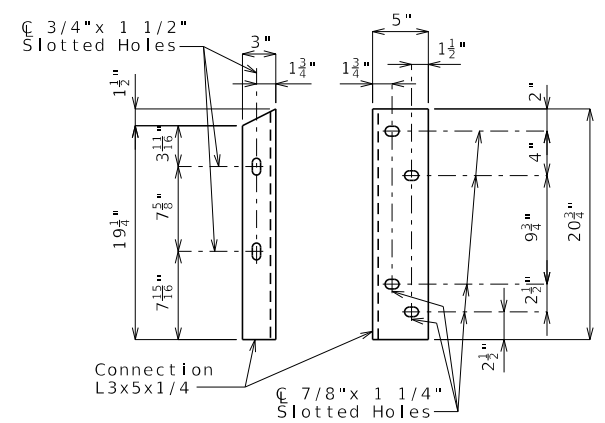
SECTION B-B



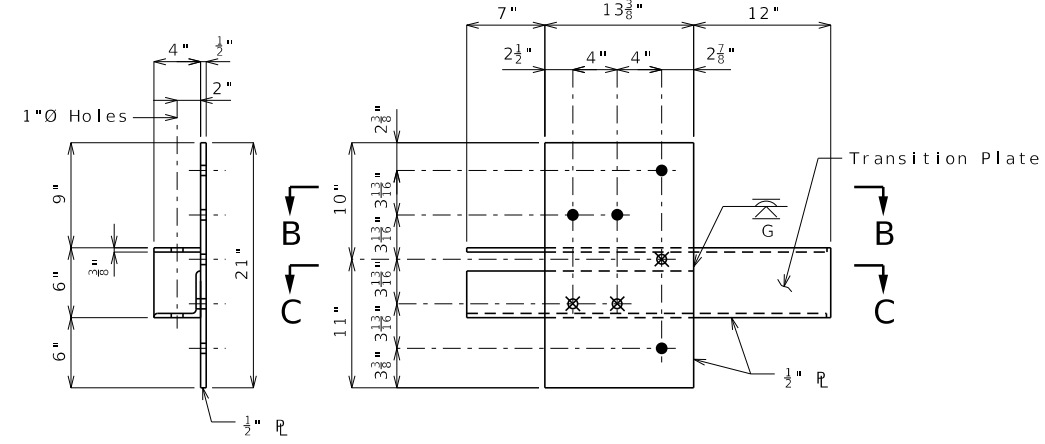
SECTION THRU THRIE BEAM RAIL



SECTION C-C

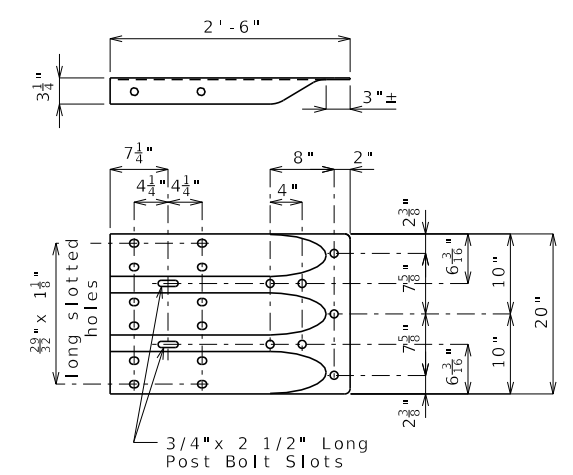


CONNECTION ANGLE DETAILS
Install angles to rail caps using 5/8"Ø washers and self-locking nuts, or nuts and jam nuts.

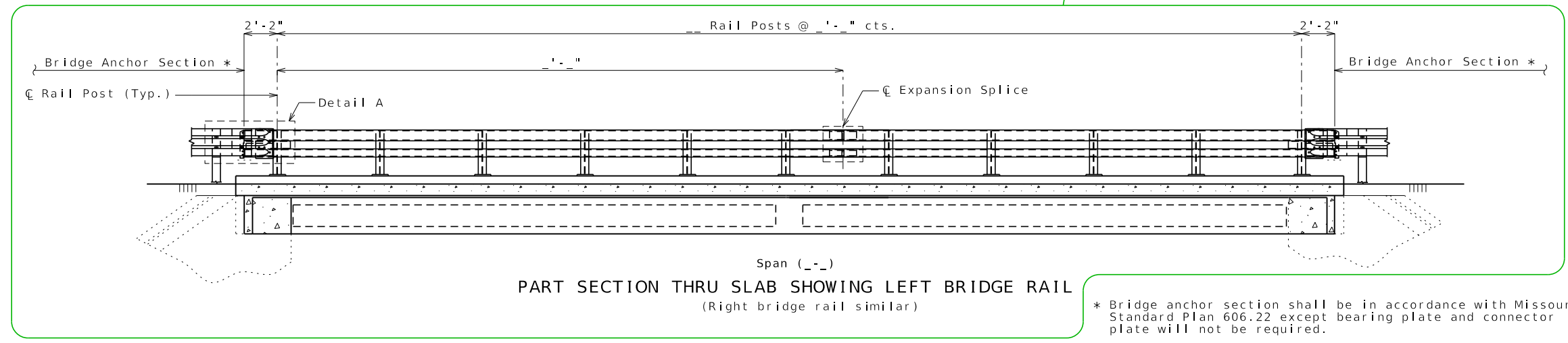


GUARDRAIL CONNECTION PLATE ASSEMBLY DETAILS
(Mirror for opposite end)

- ⊗ Drill and tap 3 holes for 7/8-inch diameter ASTM F3125 Grade A325 Type 1 bolts.
- Four 1-inch diameter holes for 7/8-inch diameter ASTM F3125 Grade A325 Type 1 bolts and nuts.



TERMINAL CONNECTOR



PART SECTION THRU SLAB SHOWING LEFT BRIDGE RAIL
(Right bridge rail similar)

* Bridge anchor section shall be in accordance with Missouri Standard Plan 606.22 except bearing plate and connector plate will not be required.

DATE PREPARED		10/17/2024	
ROUTE	STATE	MO	
DISTRICT	SHEET NO.	000	
COUNTY			
JOB NO.			
CONTRACT ID.			
PROJECT NO.			
BRIDGE NO.			
DATE	DESCRIPTION		
MISSOURI HIGHWAYS AND TRANSPORTATION COMMISSION			
105 WEST CAPITOL JEFFERSON CITY, MO 65102 1-888-ASK-MODOT (1-888-275-6636)			

TTR2 Guidance

Standard Drawing Guidance (do not show on plans):

① Modify as required.

TL-4 (NCHRP 350) bridge rail is typically used on spread box beam bridges and may be used on adjacent box beam bridges where reinforcement is embedded in the beam.

Use only in certain applications because of cost. Acceptable for use when roadway width or site distance is a concern. Curb shall be used to prevent drainage over deck.