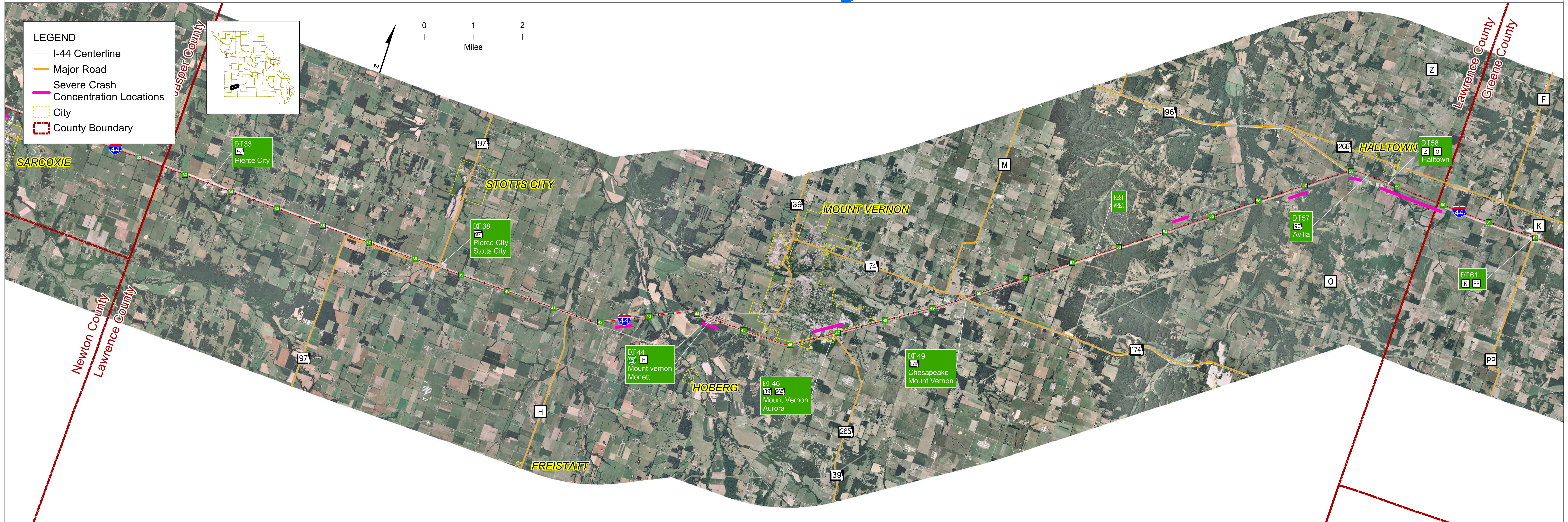


Lawrence County Crash Data



Prevailing Types of Crashes in Lawrence County

1. Out of Control
Crashes where vehicle contacts a fixed object or ran off the road
2. Rear End
3. Other
Crashes where vehicle contacts "other object"

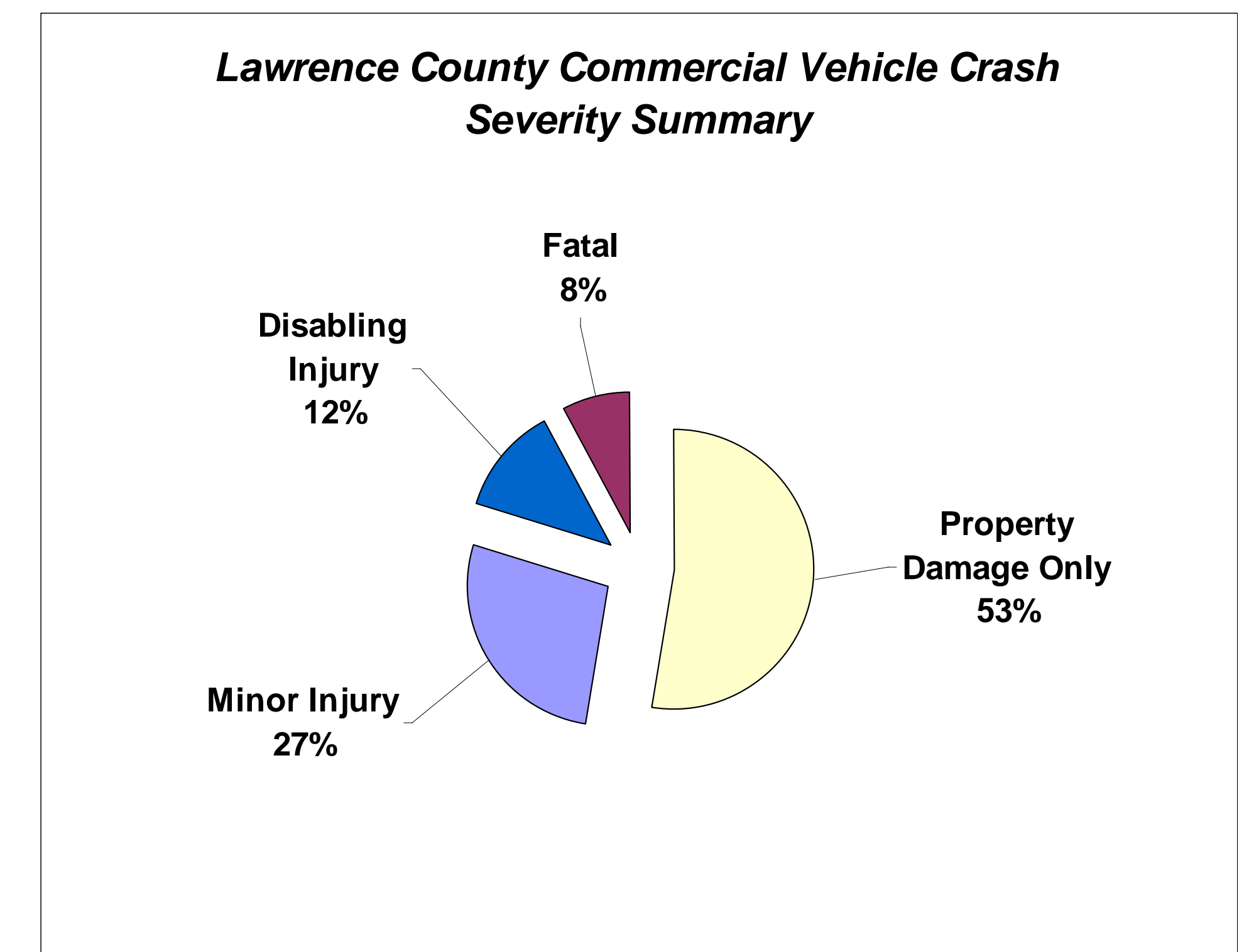
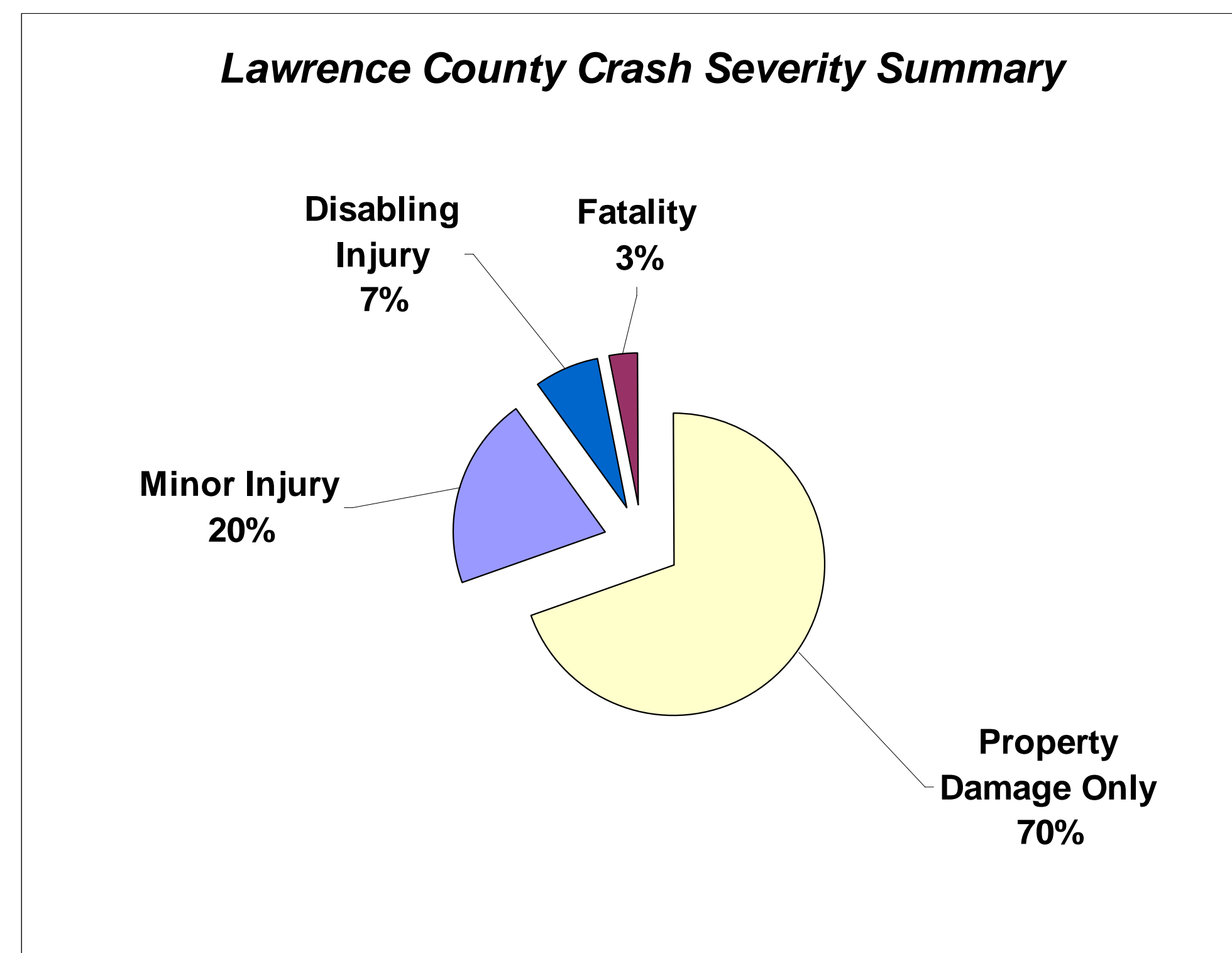
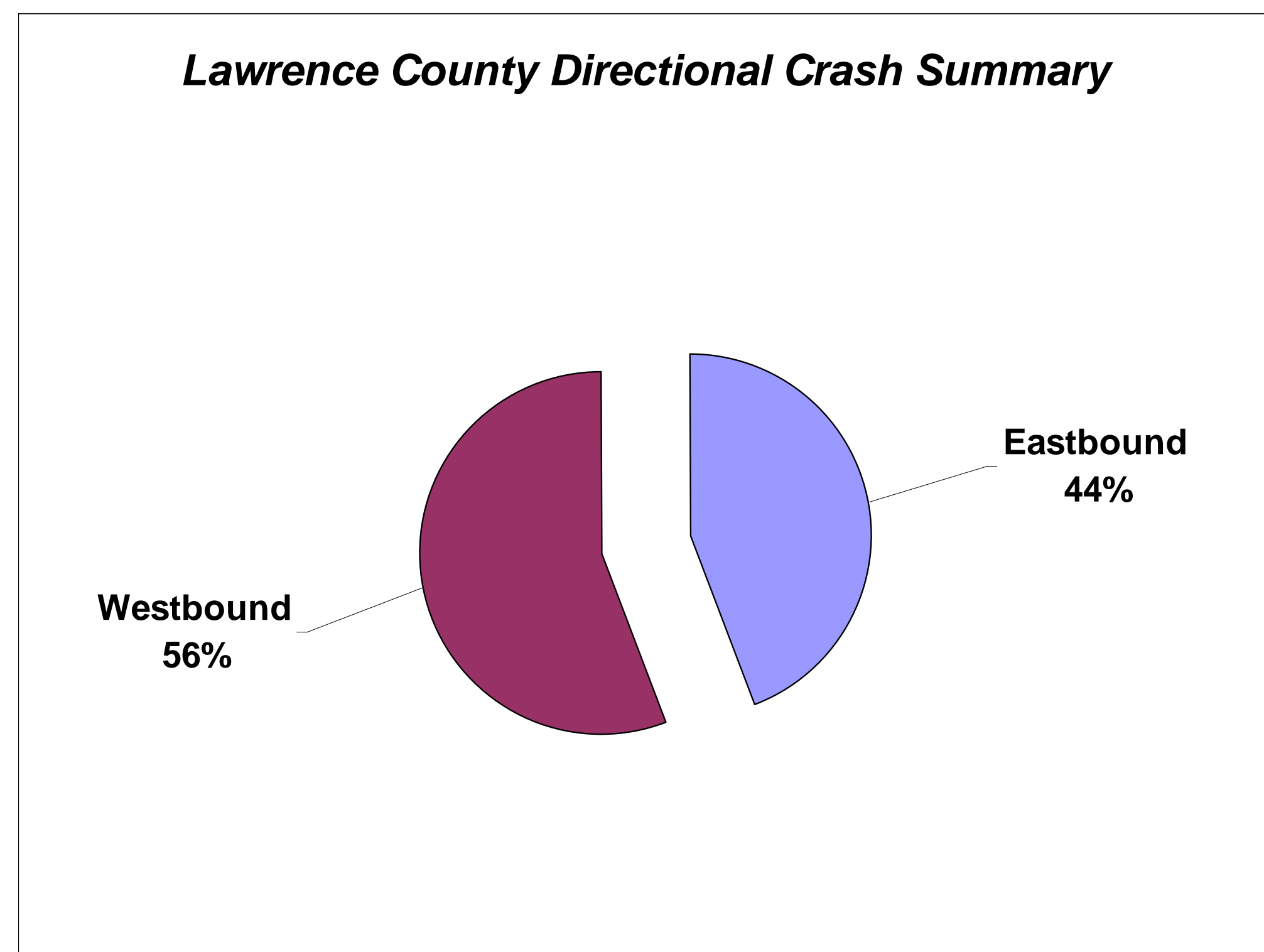
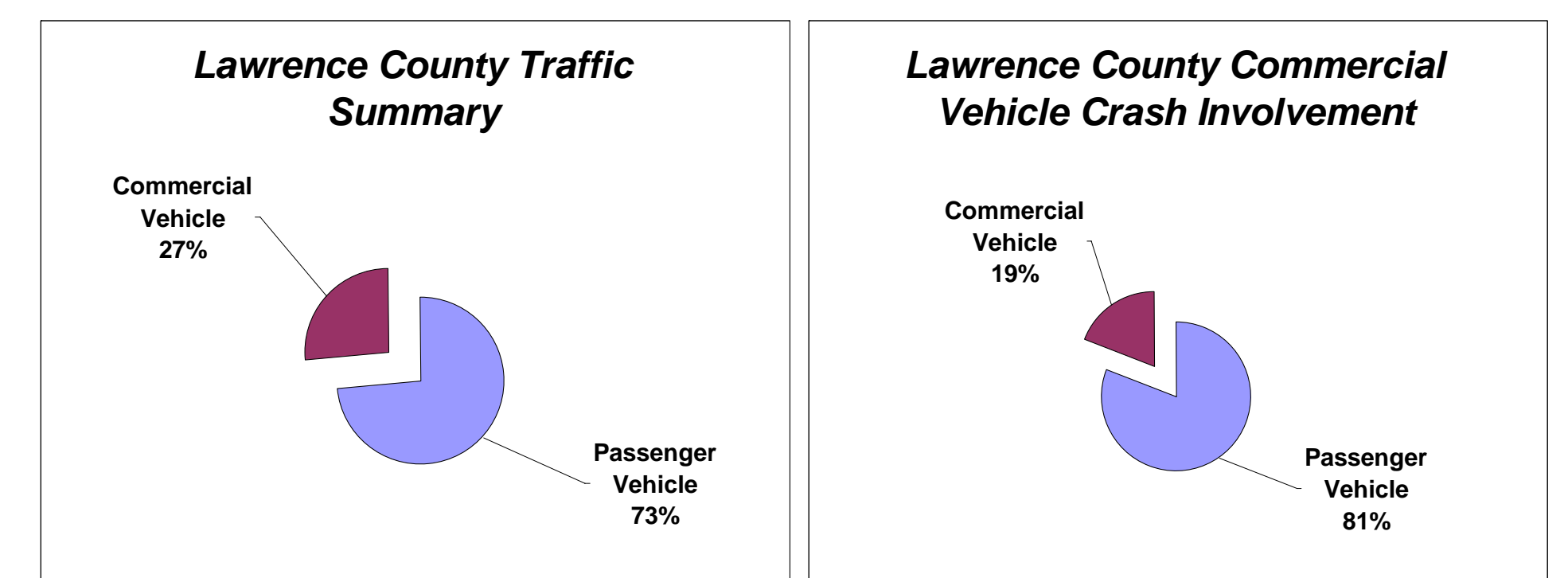
Lawrence County Crash Rate Summary

	Lawrence County	I-44 Study Corridor	Missouri State Average for Interstates
All Crashes	57.66	84.38	113.02
Property Damage Only	39.79	62.61	84.13
Minor Injury	11.88	15.02	28.02
Disabling Injury	4.08	5.46	
Fatality	1.92	1.28	0.87

Source: MoDOT TMS, 2001 - 2005. All Rates Expressed in Number of Crashes per Hundred Million Vehicle Miles Traveled
Red Text Indicates Rates Higher Than State Average for Similar Facilities

Commercial Vehicle Crashes in Lawrence County

Crashes in which at least one vehicle involved was a commercial vehicle



Crash Type Analysis

- Prevailing crash types noted above are indicative of unexpected, sudden stopping or reduced speed.

Crash Rate and Severity Analysis

- Lawrence County and the I-44 Study Corridor's Fatality Rate is higher than the Missouri State Average for Interstates.

Commercial Vehicle Crash Analysis

- Commercial Vehicles account for 27% of the traffic volume in Lawrence County, but are only involved in 19% of the crashes.
- Commercial Vehicle crashes tend to be more severe than passenger vehicle only crashes.