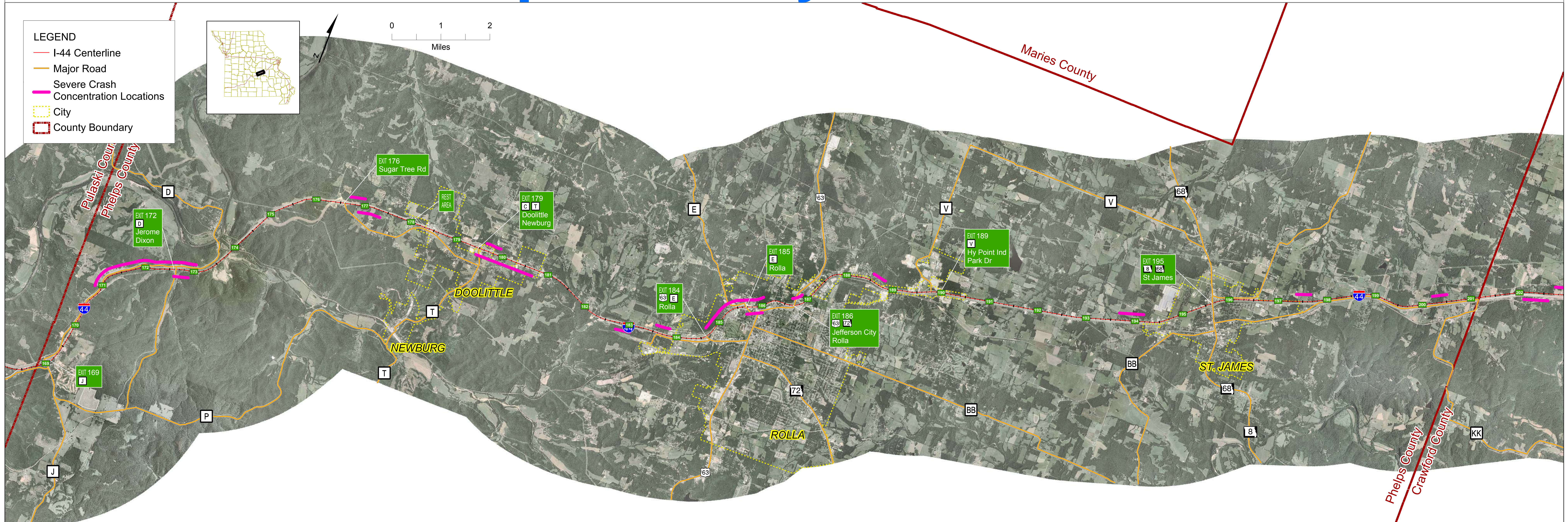
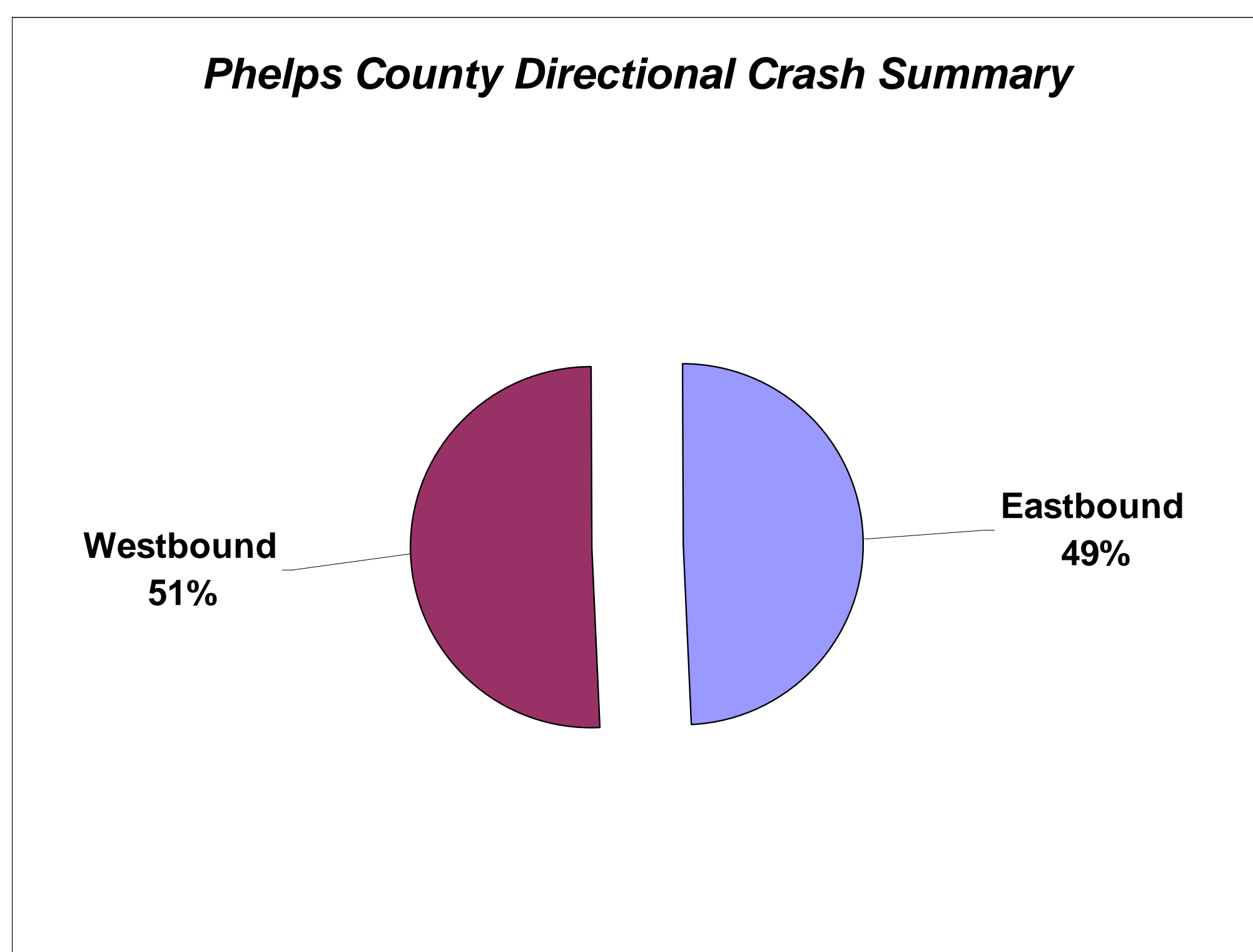


# Phelps County Crash Data



## Prevailing Types of Crashes in Phelps County

1. Out of Control  
*Crashes where vehicle contacts a fixed object or ran off the road*
2. Other  
*Crashes where vehicle contacts "other object"*
3. Rear End



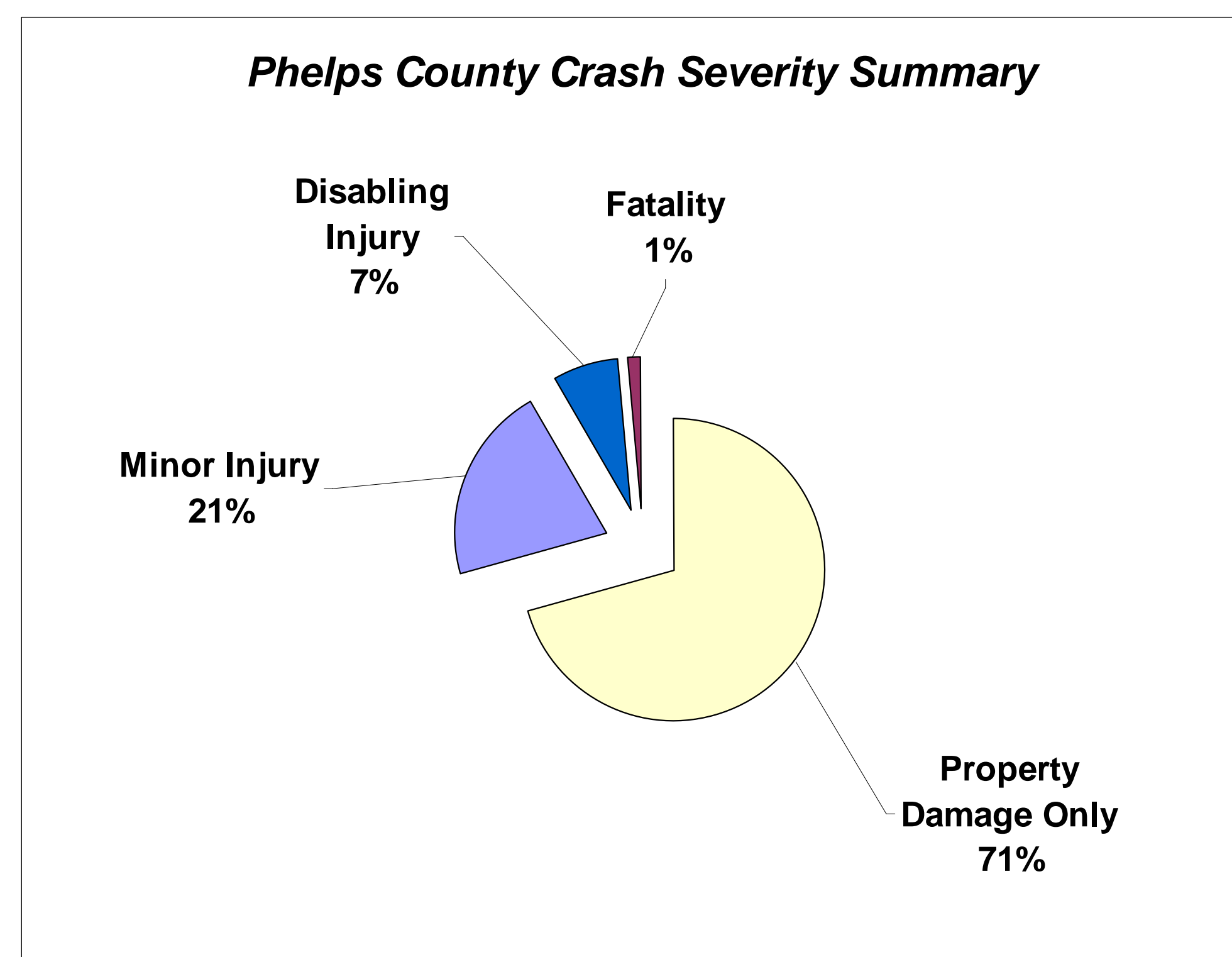
### Crash Type Analysis

- Prevailing crash types noted above are indicative of unexpected, sudden stopping or reduced speed.

## Phelps County Crash Rate Summary

	Phelps County	I-44 Study Corridor	Missouri State Average for Interstates
All Crashes	100.02	84.38	113.02
Property Damage Only	72.37	62.61	84.13
Minor Injury	19.75	15.02	28.02
Disabling Injury	6.56	5.46	
Fatality	1.34	1.28	0.87

Source: MoDOT TMS, 2001 - 2005. All Rates Expressed in Number of Crashes per Hundred Million Vehicle Miles Traveled  
Red Text Indicates Rates Higher Than State Average for Similar Facilities

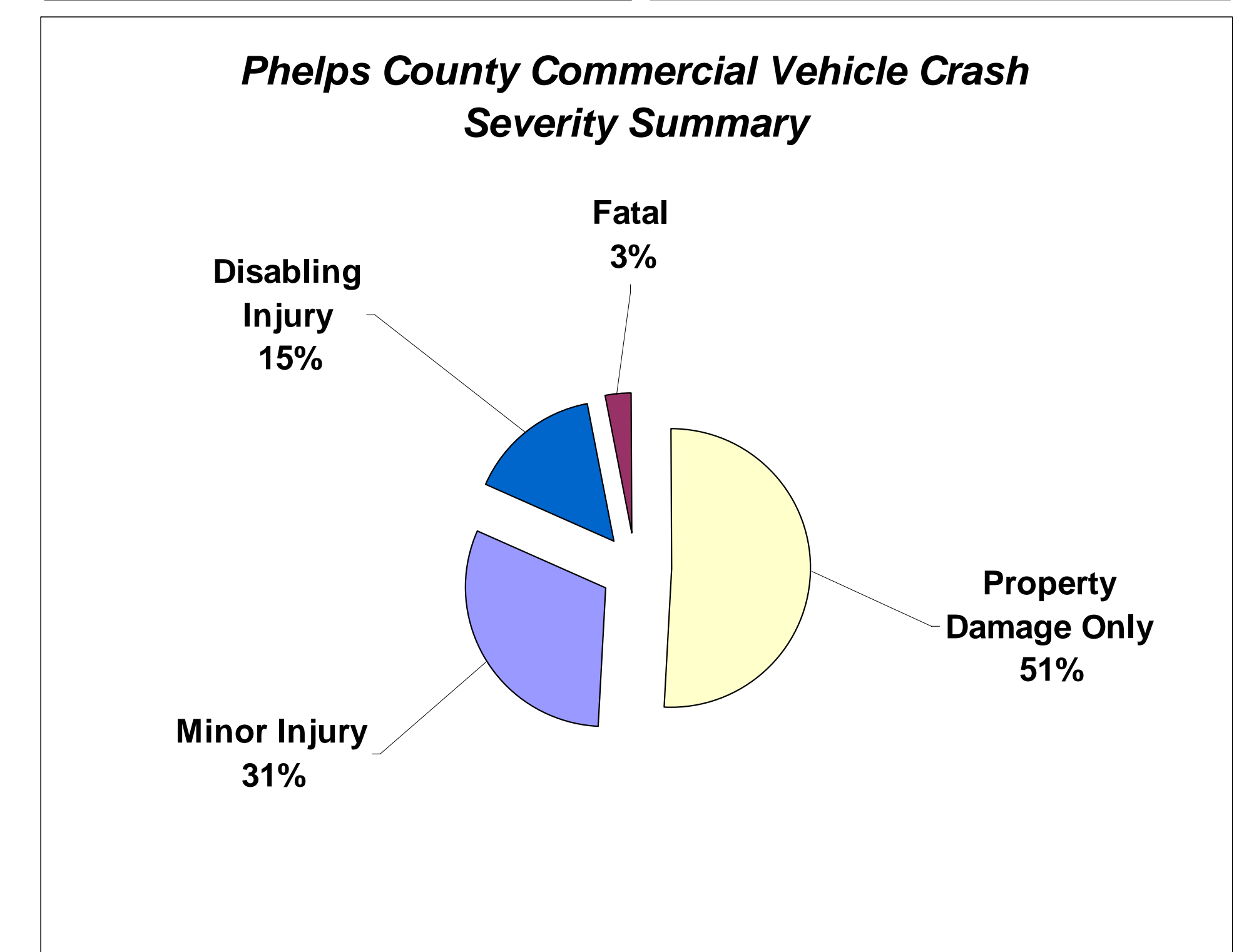
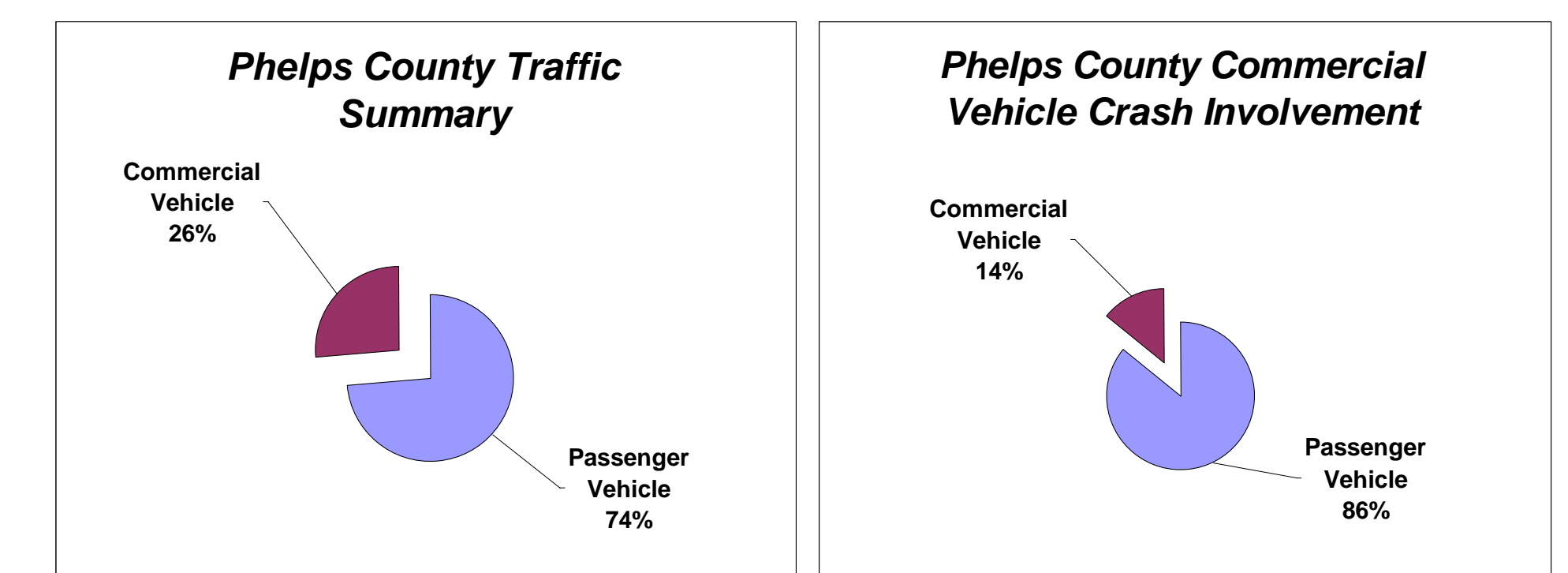


### Crash Rate and Severity Analysis

- Phelps County and the I-44 Study Corridor's Fatality Rate is higher than the Missouri State Average for Interstates.

## Commercial Vehicle Crashes in Phelps County

*Crashes in which at least one vehicle involved was a commercial vehicle*



### Commercial Vehicle Crash Analysis

- Commercial Vehicles account for 26% of the traffic volume in Phelps County, but are only involved in 14% of the crashes.  
- Commercial Vehicle crashes tend to be more severe than passenger vehicle only crashes.