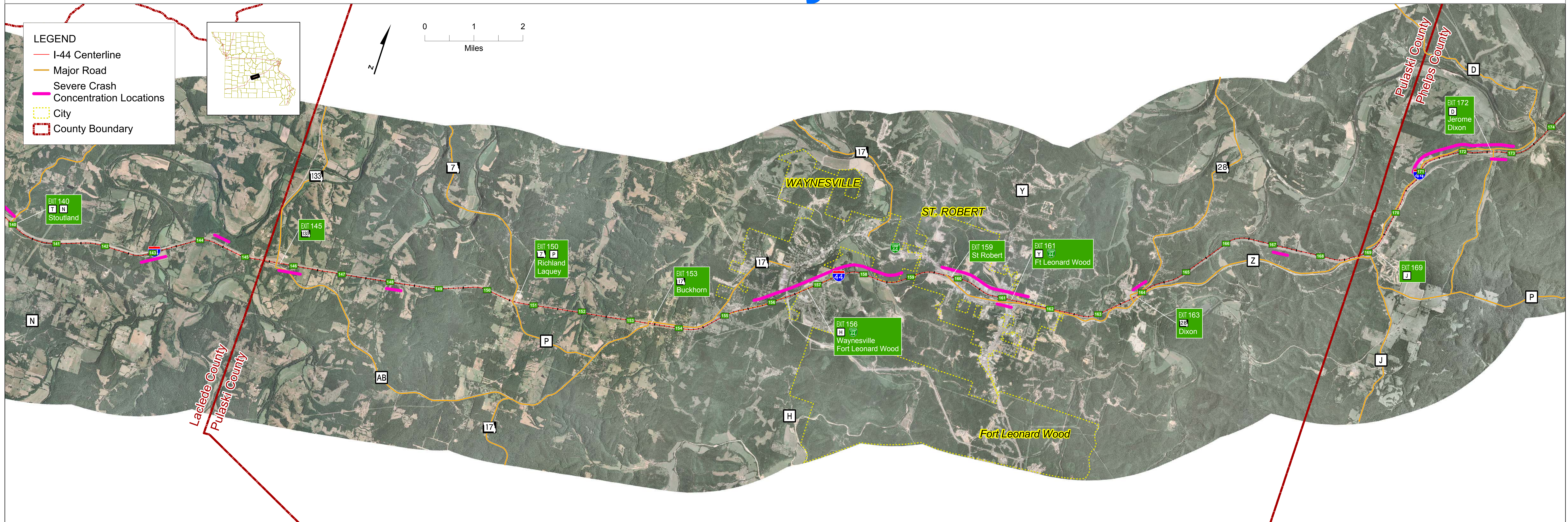


Pulaski County Crash Data



Prevailing Types of Crashes in Pulaski County

1. Out of Control
Crashes where vehicle contacts a fixed object or ran off the road
2. Rear End
3. Other
Crashes where vehicle contacts "other object"

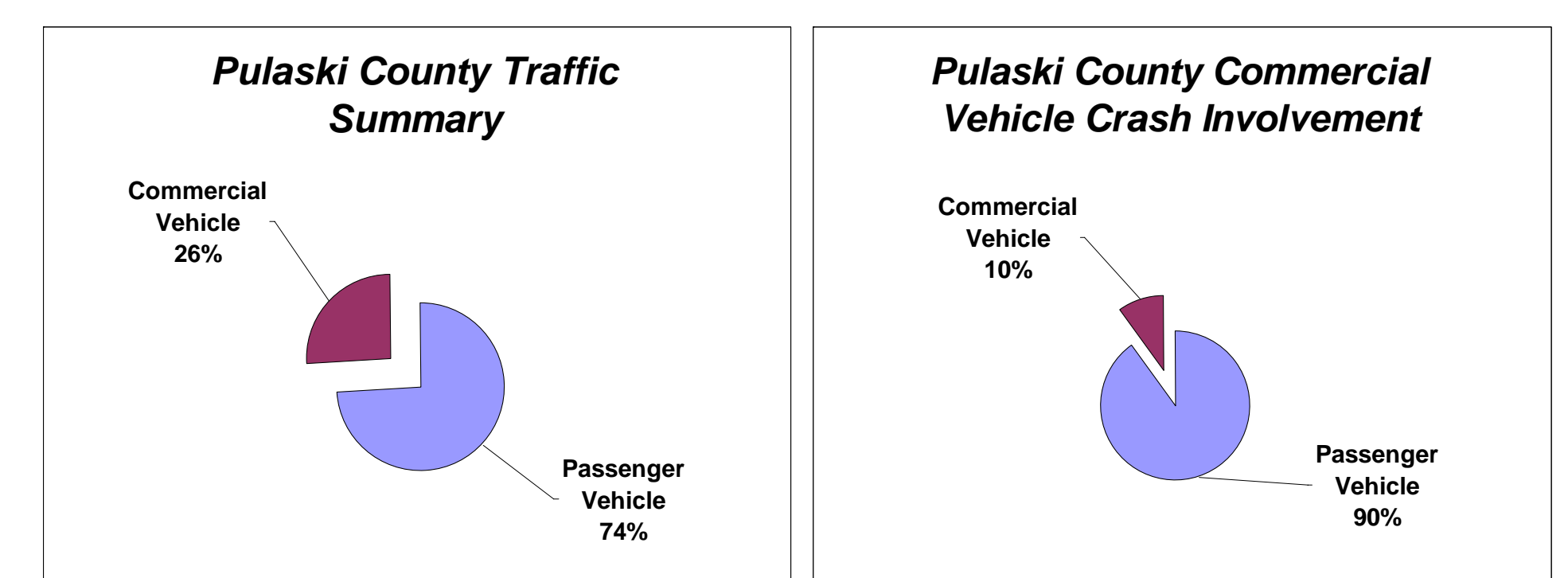
Pulaski County Crash Rate Summary

	Pulaski County	I-44 Study Corridor	Missouri State Average for Interstates
All Crashes	123.76	84.38	113.02
Property Damage Only	99.54	62.61	84.13
Minor Injury	14.55	15.02	28.02
Disabling Injury	8.83	5.46	
Fatality	0.84	1.28	0.87

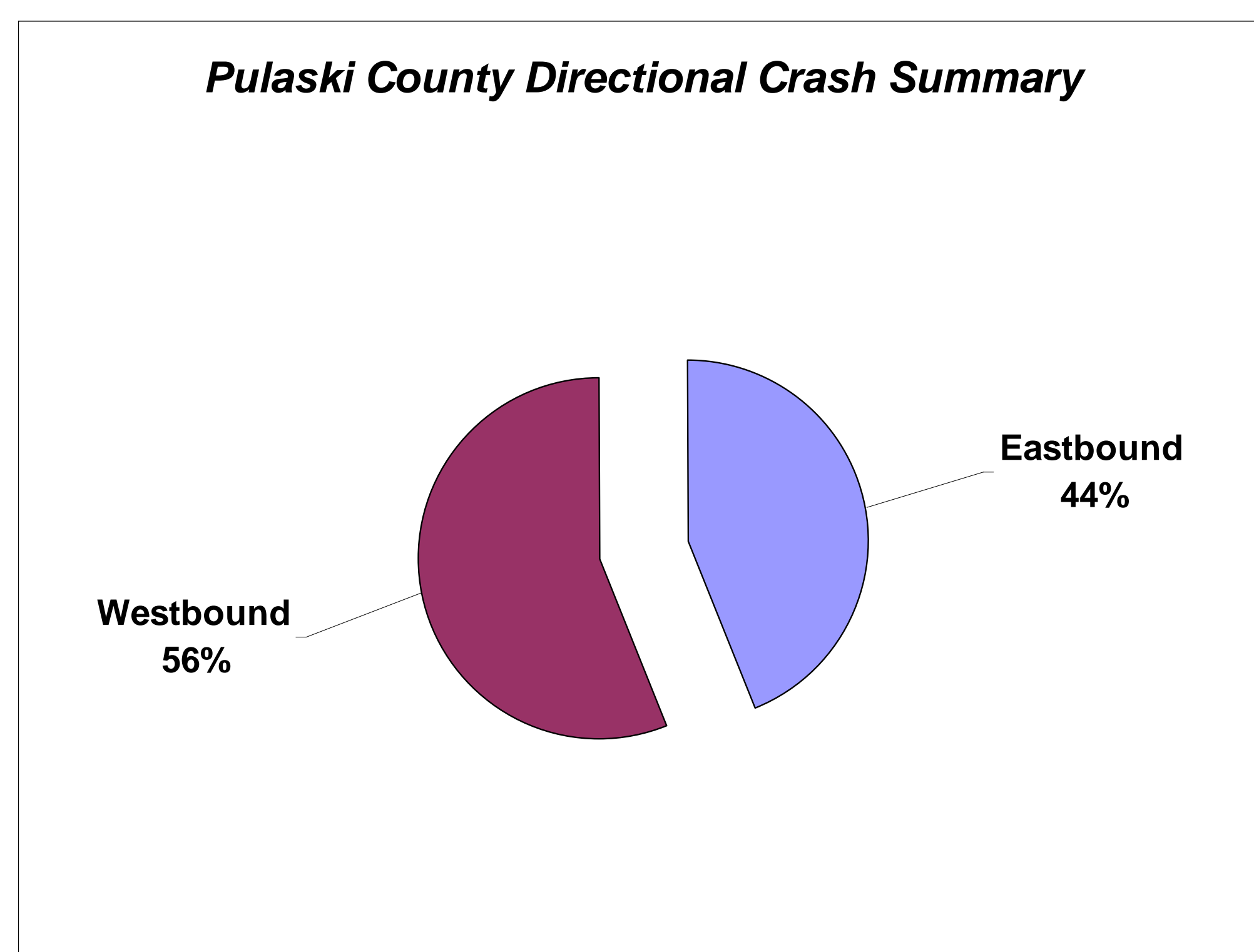
Source: MoDOT TMS, 2001 - 2005. All Rates Expressed in Number of Crashes per Hundred Million Vehicle Miles Traveled
Red Text Indicates Rates Higher Than State Average for Similar Facilities

Commercial Vehicle Crashes in Pulaski County

Crashes in which at least one vehicle involved was a commercial vehicle



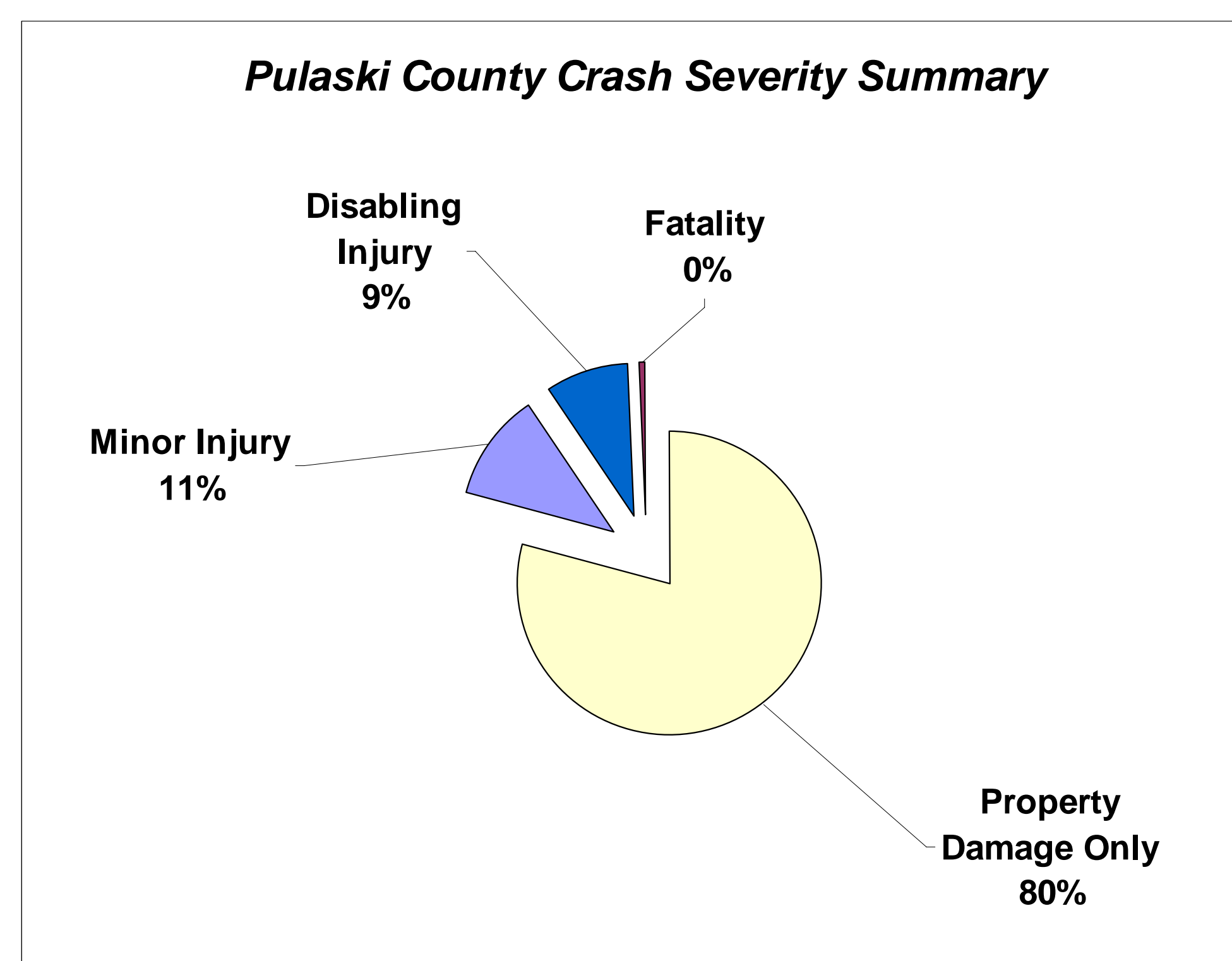
Pulaski County Directional Crash Summary



Crash Type Analysis

- Prevailing crash types noted above are indicative of unexpected, sudden stopping or reduced speed.

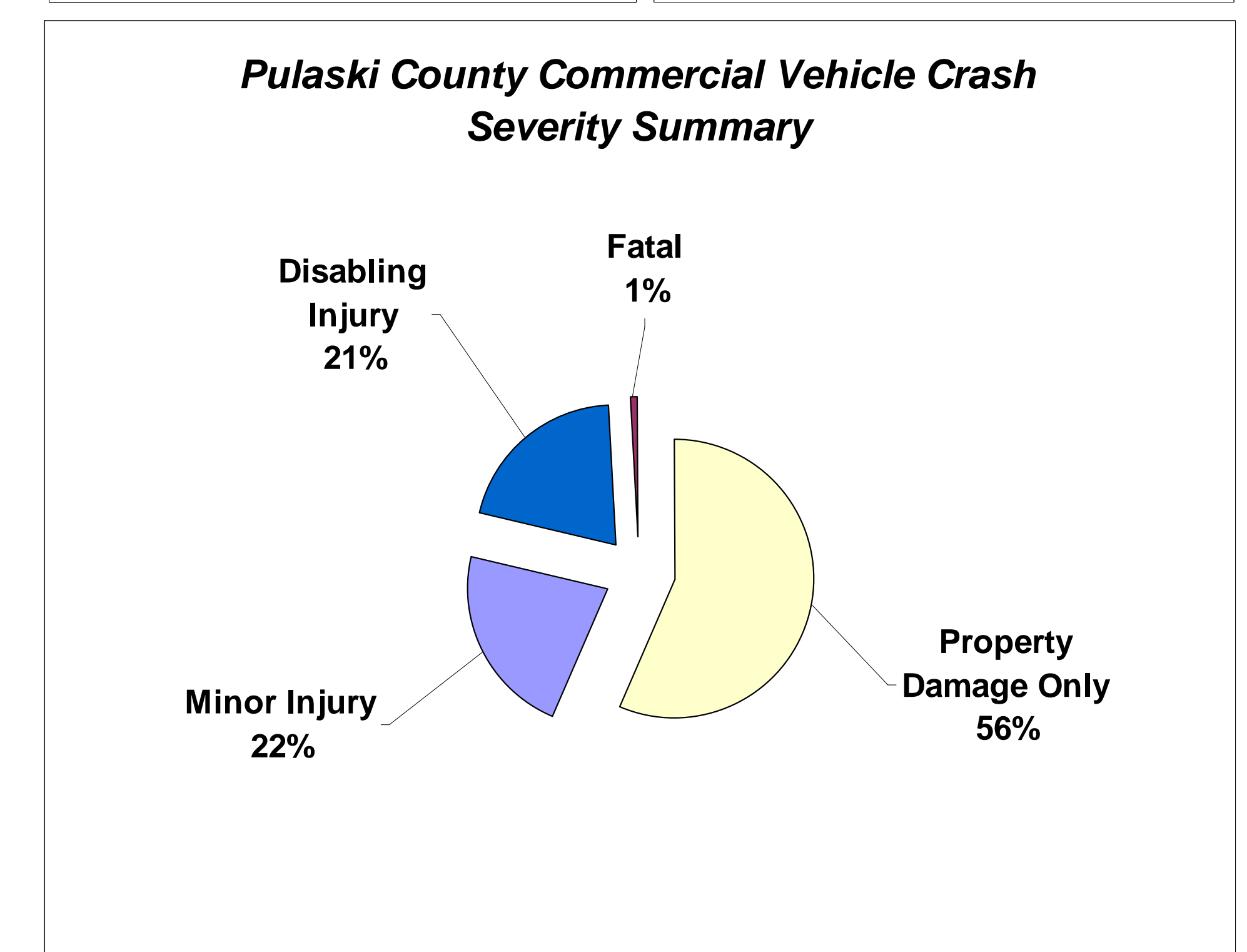
Pulaski County Crash Severity Summary



Crash Rate and Severity Analysis

- Pulaski County's Crash Rate and Property Damage Only Rate exceeds that of the I-44 Study Corridor and the Missouri State average for Interstates.
- The I-44 Study Corridor's Fatality Rate is higher than the Missouri State Average for Interstates.

Pulaski County Commercial Vehicle Crash Severity Summary



Commercial Vehicle Crash Analysis

- Commercial Vehicles account for 26% of the traffic volume in Pulaski County, but are only involved in 10% of the crashes.
- Commercial Vehicle crashes tend to be more severe than passenger vehicle only crashes.