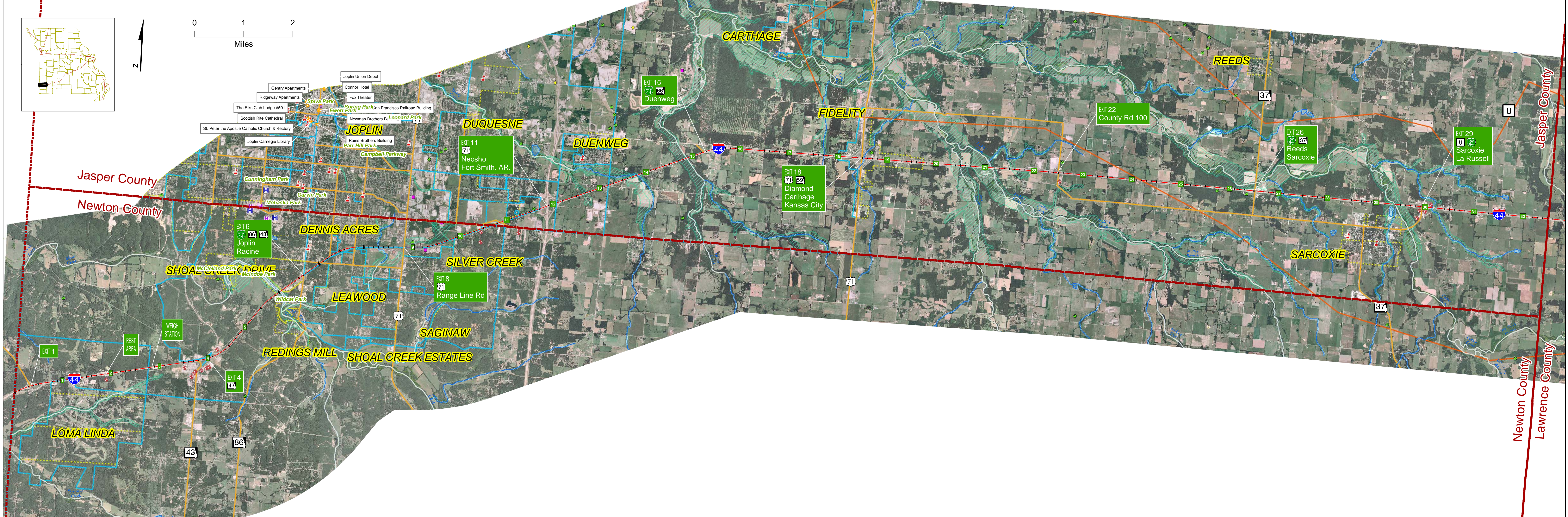


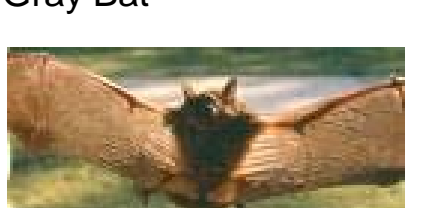






# Newton County Environmental Resources



**Threatened and Endangered Species Found in Newton County**

Species Common Name	Scientific Name	Federal Status	State Status
 Arkansas Darter	<i>Etheostoma cragini</i>	Candidate	N/L
 Black-tailed Jackrabbit	<i>Lepus californicus</i>	N/L	Endangered
 Gray Bat	<i>Myotis grisescens</i>	Endangered	Endangered
 Greater Prairie Chicken	<i>Tympanuchus cupido</i>	N/L	Endangered
 Neosho Mucket	<i>Lampsilis rafinesqueana</i>	Candidate	N/L
 Northern Harrier	<i>Circus cyaneus</i>	N/L	Endangered
 Ozark Cavefish	<i>Amblyopsia rosae</i>	Threatened	Endangered

N/L = Not Listed  
 Source: US Fish and Wildlife Service (August 2007 Correspondence) & Missouri Department of Conservation Heritage Database (<http://moc.mo.gov/cgi-bin/heritage/>)

### Historic Resources Legend

- ★ National Historic Sites
- National Historic District

### Regulated Materials Legend

- Sinkhole
- ◆ Producing Mine
- Large Hazardous Material Generator
- Karst Topography
- Landfill

### Floodplains Legend

- ▨ 100-Year Floodplain

### Aquatic Resources Legend

- 303d Waters (Does not meet state water quality standards)
- Stream/River
- Lakes and Ponds
- ▨ Wetlands from National Wetland Inventory (NWI)

### Community Resources Legend

- ⊕ Public Water Wells
- 🎓 School
- 🏥 Hospital
- 🏠 Rural Clinic
- 🏥 Ambulatory Surgical Center
- ▨ Enhanced Enterprise Zone
- State Parks/Missouri DNR Public Lands
- ▨ City Boundary
- ▨ County Boundary

Sources: Missouri Spatial Data Information Service ([www.msdis.missouri.edu](http://www.msdis.missouri.edu))  
 The Nature Conservancy (TNC), and  
 The Missouri Department of Health and Senior Services (DHSS).