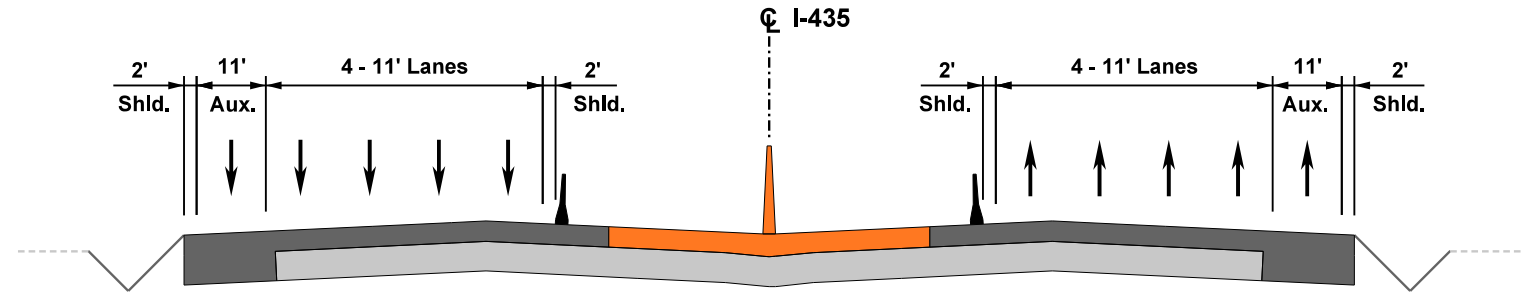


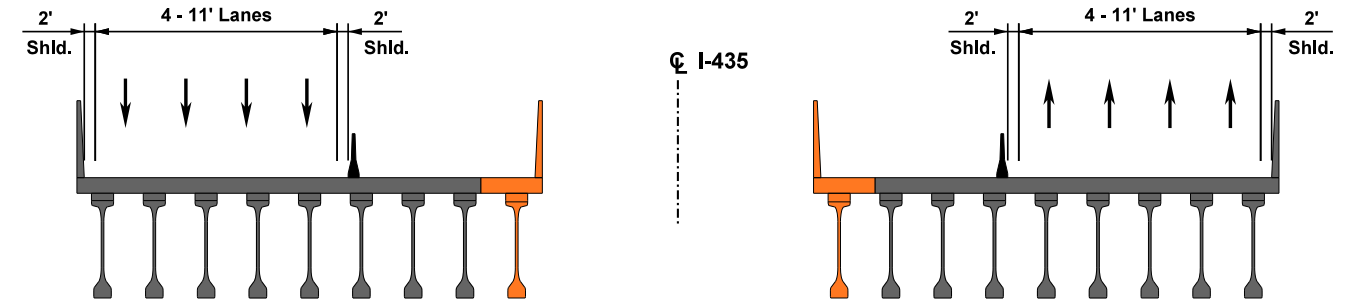
PHASE 3A MAY TO SEPTEMBER 2019

With the completion of Phase 2, the new outside and interior lanes are constructed, and all four lanes are shifted to the outside. This creates a long, wide, work zone in the median to complete the construction of the mainline in Phase 3A. During this phase, all of the median pavement and median barrier is constructed with the exception of the remaining phase of 104th Street Bridge.

MAINLINE TYPICAL SECTION

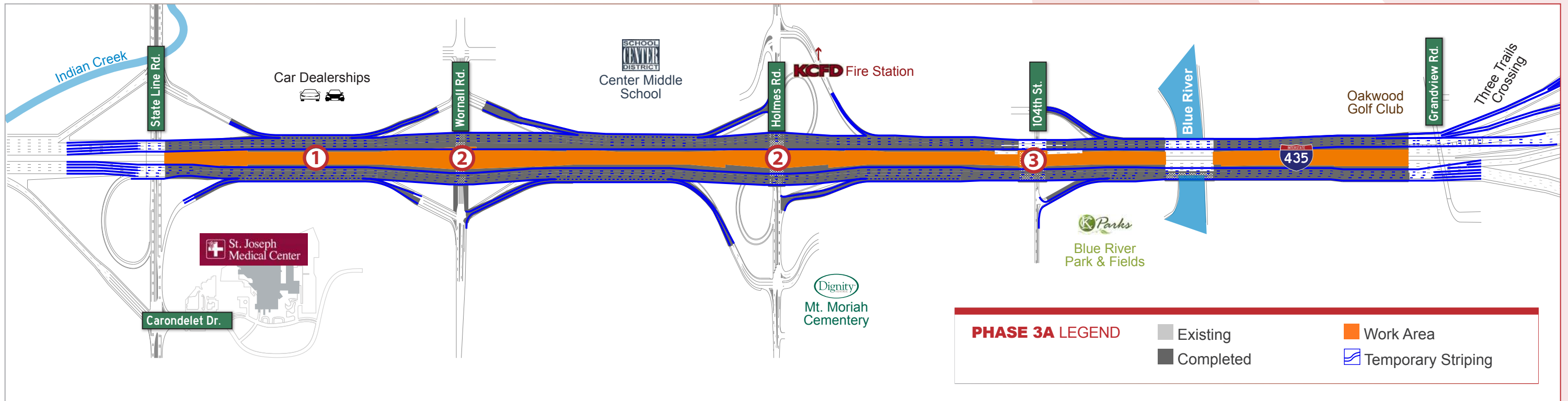


BRIDGE TYPICAL SECTION



PHASE 3A KEY ELEMENTS

- ① Construct median pavement
- ② Construct remainder of Holmes and Wornall Bridges
- ③ Construct median deck replacement of 104th Bridge



PHASE 3A LEGEND

- Existing
- Completed
- Work Area
- Temporary Striping

PHASE 3B OCTOBER TO DECEMBER 2019

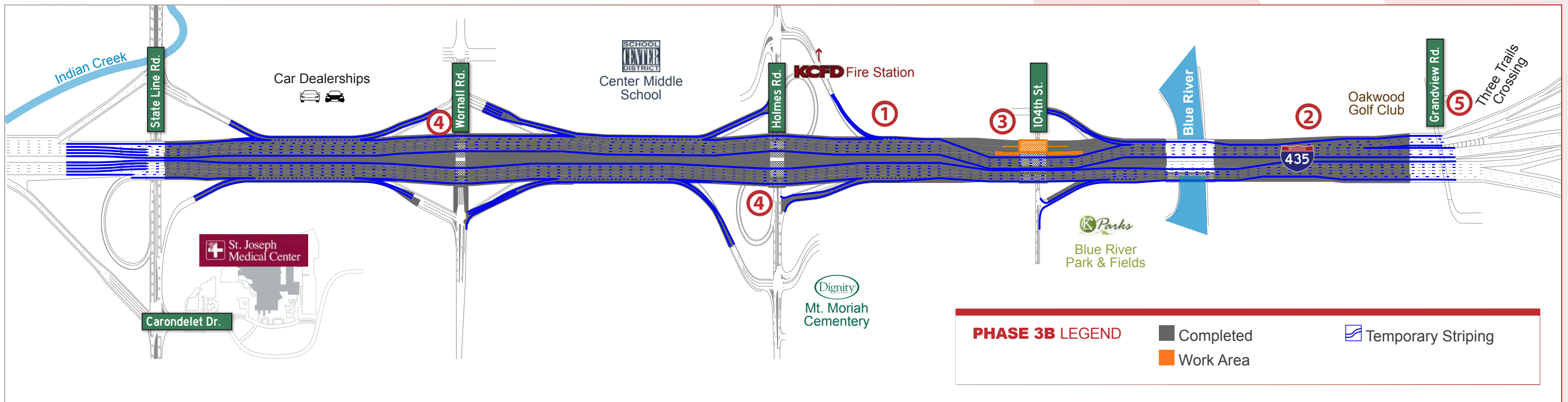
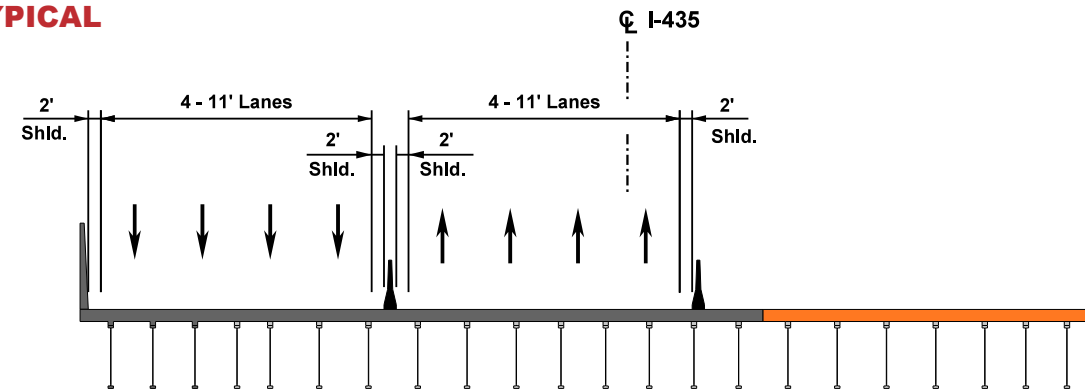
This is the final phase of construction and will complete the new deck on the 104th Street Bridge. During this phase, final median barrier near the 104th Street Bridge will also be installed. The permanent striping elsewhere on the project will be in place for this final phase of construction.

The Unbonded Asphalt Wearing Surfaces (UBAWS) pavement will be removed and replaced at the far east end of the corridor using nightly lane closures after the concrete paving operations are complete.

PHASE 3B KEY ELEMENTS

- ① West of 104th the project is open to final configuration
- ② East of Blue River the project is open to final configuration
- ③ Construct the remainder of the 104th Street deck replacement
- ④ Cross roads are in their final configuration
- ⑤ UBAWS replacement on the Three Trails Crossing ramps will be constructed with off peak lane closures

BRIDGE TYPICAL SECTION



PHASE 3B LEGEND

- Completed
- Work Area
- ▨ Temporary Striping