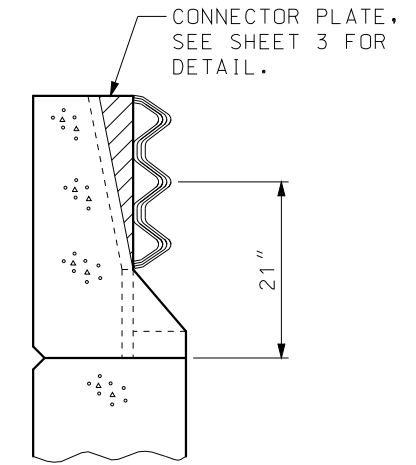
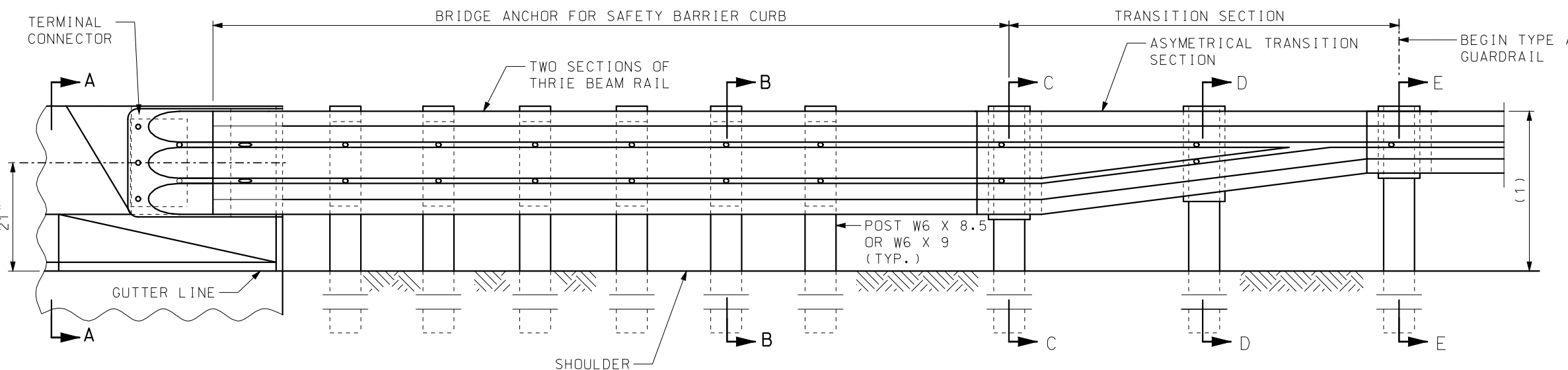


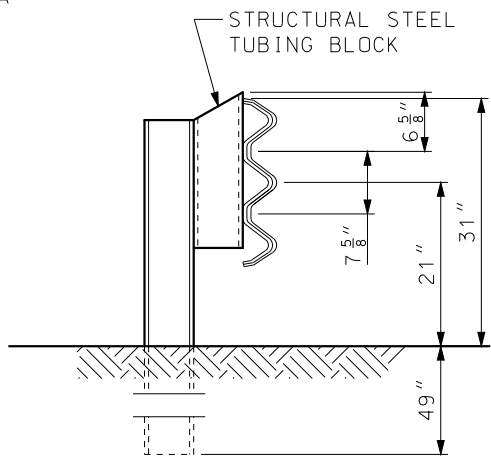
PLAN



SECTION A-A

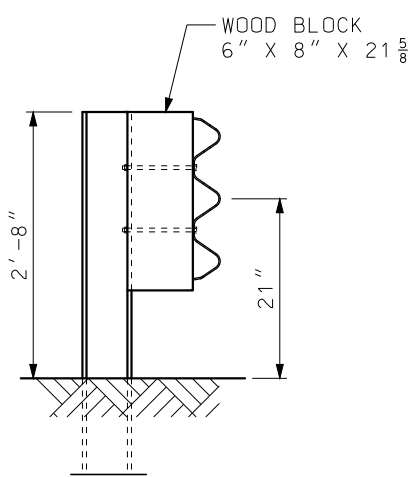


PART SECTION THRU SLAB AT END OF WING

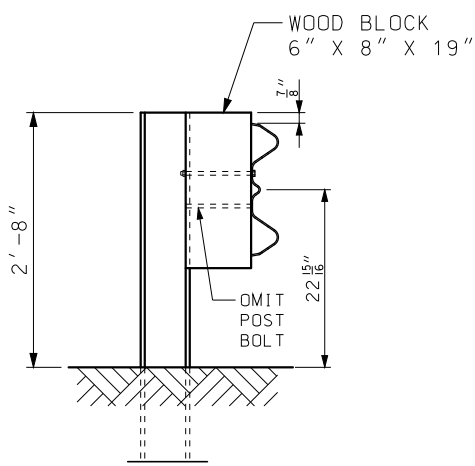


SECTION B-B

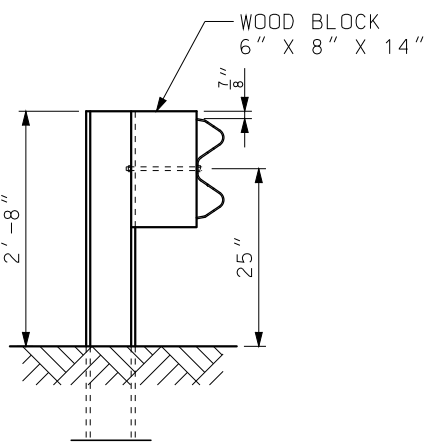
(1) TRANSITION FROM 31" TO 29" HEIGHT OVER NEXT TWO UPSTREAM 12'-6" W-BEAM RAILS.



SECTION C-C



SECTION D-D



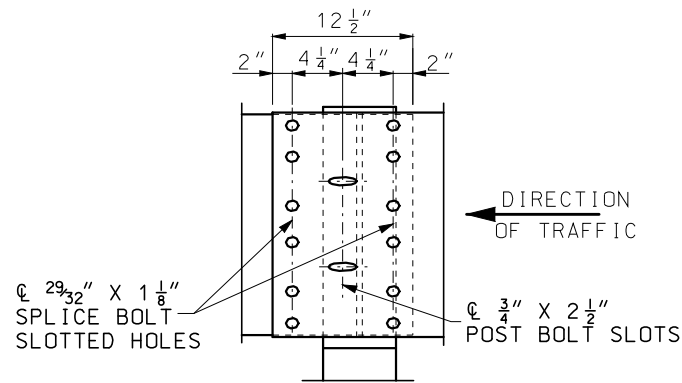
SECTION E-E

NOTES:  
 FOR GENERAL NOTES, SEE SHEET 3 OF 6  
 FOR DETAILS OF BLOCK ON STEEL POSTS, SEE SHEET 2 OF 6.

	<b>MISSOURI HIGHWAYS AND TRANSPORTATION COMMISSION</b> 105 WEST CAPITOL JEFFERSON CITY, MO 65102 1-888-ASK-MODOT (1-888-275-6636)	
	<b>BRIDGE ANCHOR SECTION</b> SAFETY BARRIER CURB ON BRIDGE	
	DATE EFFECTIVE: 07/01/2016 DATE PREPARED: 5/13/2016	SHEET NO. <b>606.22U</b> 1 OF 6

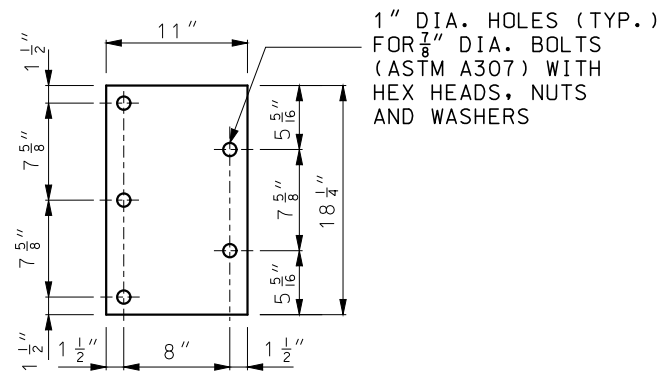
IF A SEAL IS PRESENT ON THIS SHEET IT HAS BEEN ELECTRONICALLY SEALED AND DATED.



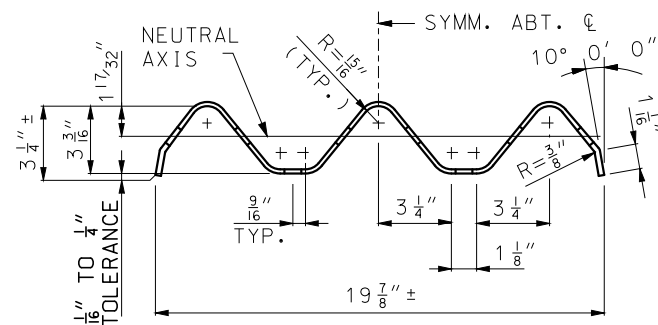


**THRIE BEAM RAIL SPLICE AT POST**

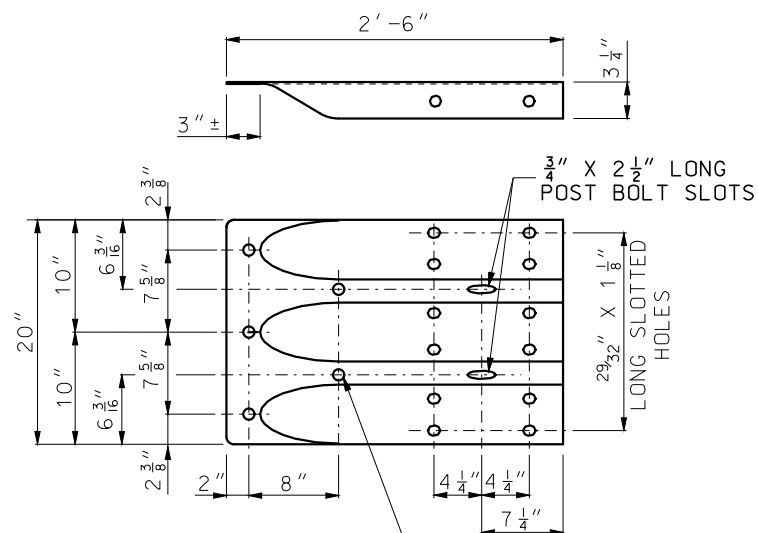
(1) THE CONTRACTOR MAY, AT HIS OPTION, FURNISH EQUIVALENT SECTIONS FABRICATED FROM MATERIAL MEETING AND IN ACCORDANCE WITH THE REQUIREMENTS OF ASTM A769 GRADE 36 OR 40. THE SECTIONS SHALL BE GALVANIZED AFTER FABRICATION IN ACCORDANCE WITH REQUIREMENTS OF AASHTO M 111.



**5/8" BEARING PLATE**

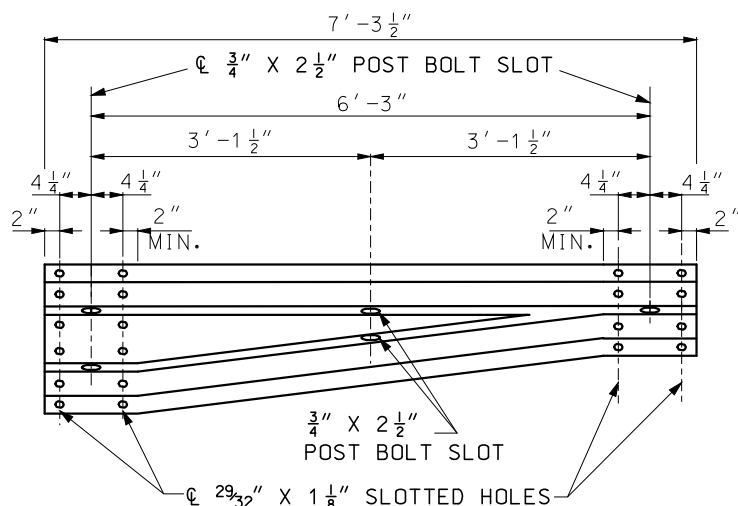


**SECTION THROUGH THRIE BEAM RAIL**



1" DIA. HOLES (TYP.) (FOR 7/8" DIA. BOLTS (ASTM A307) WITH HEX HEADS, NUTS AND WASHERS)

**TERMINAL CONNECTOR**



**ASYMMETRICAL TRANSITION SECTION**

**GENERAL NOTES:**

DESIGN BASED ON NCHRP REPORT 350 TEST LEVEL 3.

THE THRIE BEAM RAIL, TERMINAL CONNECTOR AND THE TRANSITION SECTION FOR THE BRIDGE ANCHOR SECTION SHALL BE MADE OF STEEL AND SHLL BE 12 GAGE.

FOR PROTECTIVE COATING AND MATERIAL REQUIREMENTS, SEE SECTION 1040 OF THE STANDARD SPECIFICATIONS.

RAIL POSTS SHALL BE SET PERPENDICULAR TO THE ROADWAY PROFILE GRADE AND VERTICALLY IN CROSS SECTION.

WASHERS SHALL BE USED AT ALL POST BOLTS.

STRUCTURAL TUBING BLOCK SHALL BE FABRICATED FROM ASTM A500 GRADE B STEEL AND GALVANIZED.

USE 5/8" BUTTON-HEAD OVAL SHOULDER BOLTS WITH HEX NUTS AT ALL SLOTS (THICKNESS OF HEX NUTS = 3/8" MIN.).


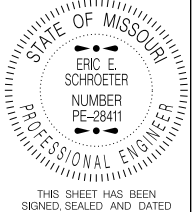
THE BEARING PLATE SHALL BE FABRICATED FROM GRADE A36 STEEL AND GALVANIZED.

ALL LAP SPLICES, INCLUDING END SHOES, SHALL BE MADE IN THE DIRECTION OF TRAFFIC.

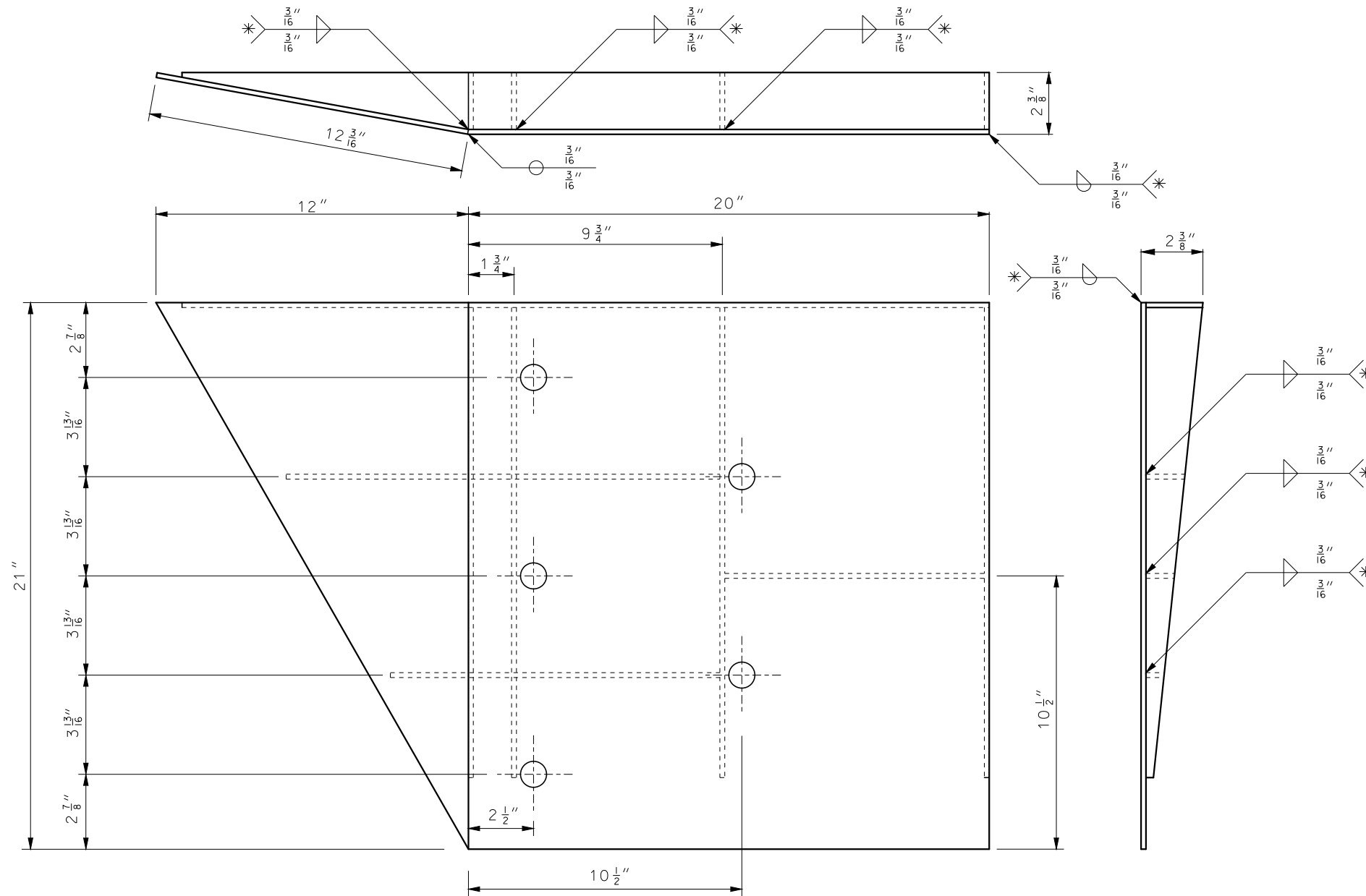
SEE STANDARD PLAN 606.00 FOR DETAILS NOT SHOWN.

THE COST OF FURNISHING, FABRICATING AND INSTALLING TRANSITION SECTION, COplete IN PLACE, WILL BE PAID FOR AT THE CONTRACT UNIT PRICE PER EACH.

THE COST OF FURNISHING FABRICATING AND INSTALLING BRIDGE ANCHOR SECTION (SAFETY BARRIER CURB), COMPLETE IN PLACE, WILL BE PAID FOR AT THE CONTRACT UNIT PRICE PER EACH.

 <p><b>MISSOURI HIGHWAYS AND TRANSPORTATION COMMISSION</b></p> <p>105 WEST CAPITOL JEFFERSON CITY, MO 65102 1-888-ASK-MODOT (1-888-275-6636)</p>	
 <p>STATE OF MISSOURI ERIC E. SCHROETER NUMBER PE-28411 PROFESSIONAL ENGINEER</p> <p>THIS SHEET HAS BEEN SIGNED SEALED AND DATED ELECTRONICALLY.</p>	<p><b>BRIDGE ANCHOR SECTION</b></p> <p><b>SAFETY BARRIER CURB ON BRIDGE</b></p>
<p>DATE EFFECTIVE: 07/01/2016</p> <p>DATE PREPARED: 5/13/2016</p>	<p>606.22U</p> <p>SHEET NO. 3 OF 6</p>

IF A SEAL IS PRESENT ON THIS SHEET IT HAS BEEN ELECTRONICALLY SEALED AND DATED.



**WELDING INSTRUCTION**

\* ALL FILLET WELDS SHALL BE 1" LONG SPACED AT 2".

**GENERAL NOTES:**

COVER PLATE PANELS ARE 4. <sup>3</sup>/<sub>16</sub>" THICK.

ALL STIFFENERS ARE <sup>1</sup>/<sub>4</sub>" THICK.

CONNECTOR PLATE SHALL BE FABRICATED FROM ASTM GRADE A36 STEEL AND GALVANIZED.

FOR GALVANIZED REQUIREMENTS, SEE SECTION 1040 OF THE STANDARD SPECIFICATIONS.

ALL HOLE DIAMETERS SHALL BE 1".

**MoDOT** MISSOURI HIGHWAYS AND TRANSPORTATION COMMISSION  
 105 WEST CAPITOL  
 JEFFERSON CITY, MO 65102  
 1-888-ASK-MODOT (1-888-275-6636)

STATE OF MISSOURI  
 ERIC E. SCHROETER  
 NUMBER PE-28411  
 PROFESSIONAL ENGINEER  
 THIS SHEET HAS BEEN SIGNED, SEALED AND DATED ELECTRONICALLY.

**BRIDGE ANCHOR SECTION  
 SAFETY BARRIER CURB ON BRIDGE  
 (CONNECTOR PLATE DETAIL)**

DATE EFFECTIVE: 07/01/2016	606.22U	SHEET NO. 4 OF 6
DATE PREPARED: 5/13/2016		

IF A SEAL IS PRESENT ON THIS SHEET IT HAS BEEN ELECTRONICALLY SEALED AND DATED.

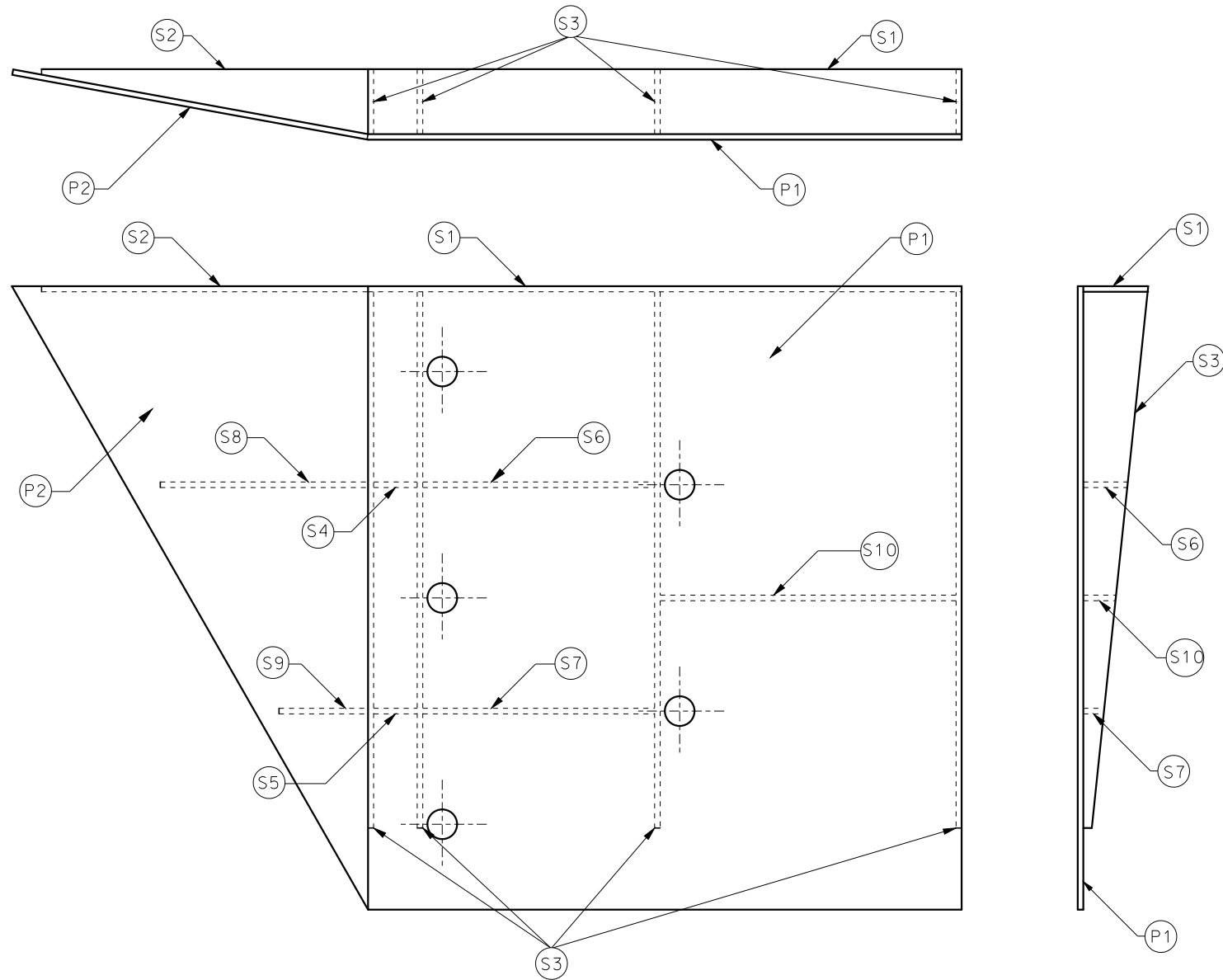
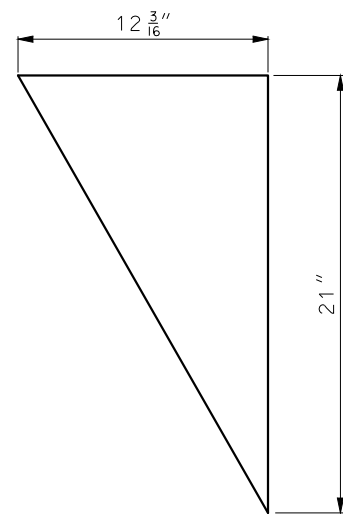
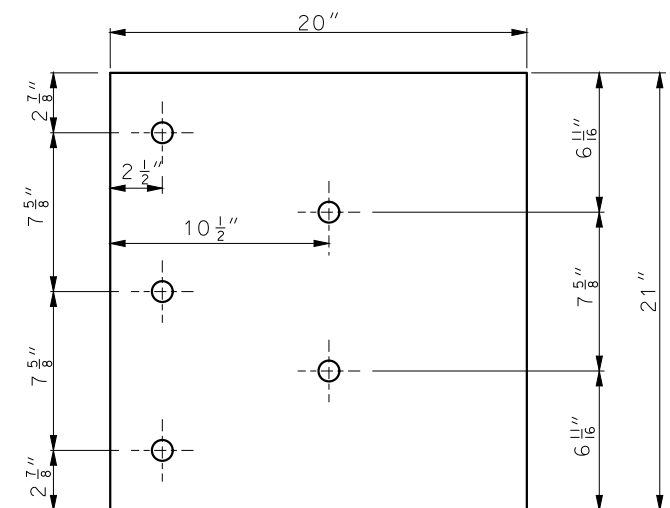


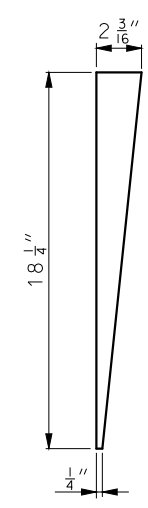
PLATE AND STIFFENER IDENTIFICATION



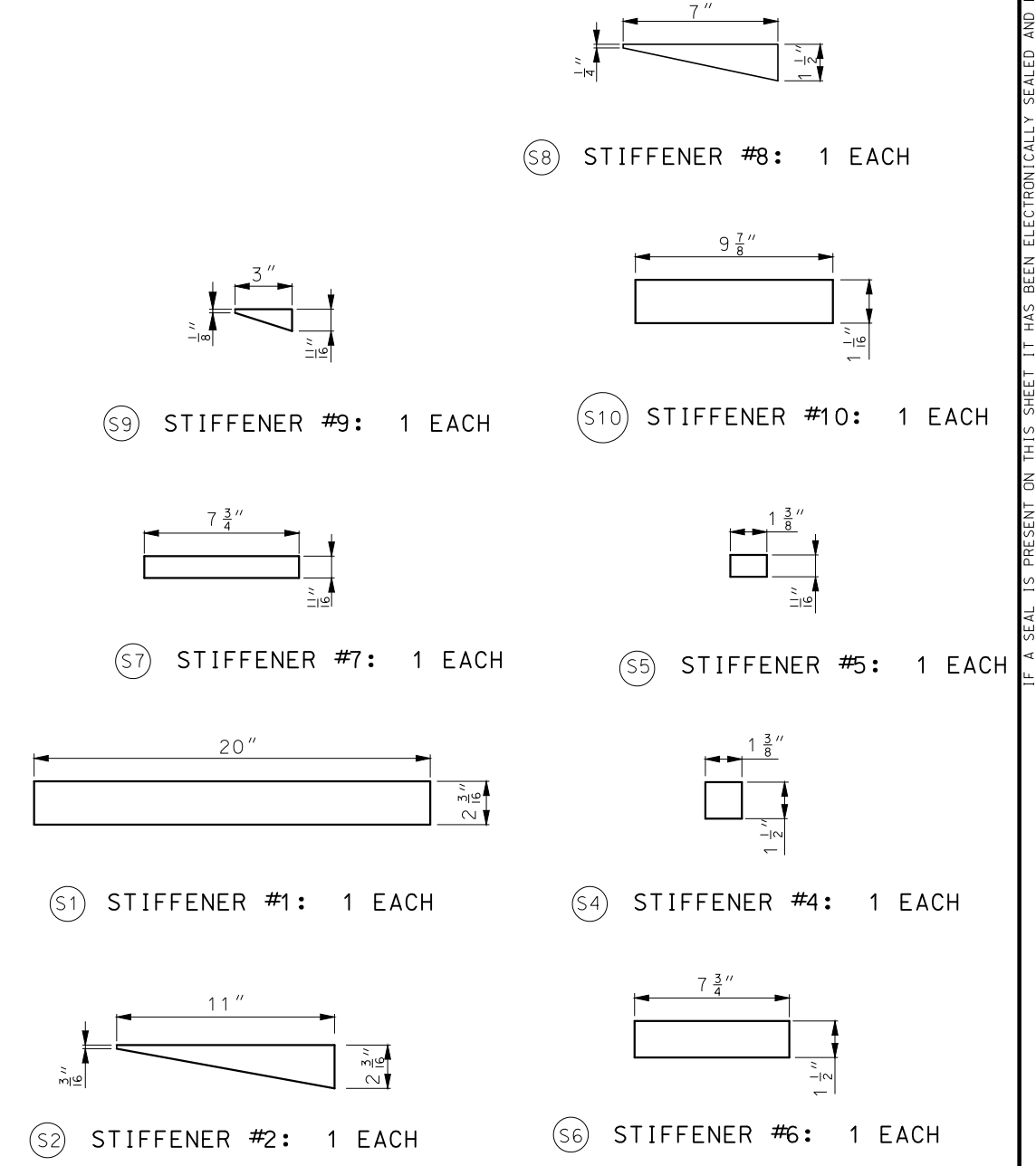
(P2) COVER PLATE #2



(P1) COVER PLATE #1



(S3) STIFFENER #3: 4 EACH



(S2) STIFFENER #2: 1 EACH

(S1) STIFFENER #1: 1 EACH

(S7) STIFFENER #7: 1 EACH

(S9) STIFFENER #9: 1 EACH


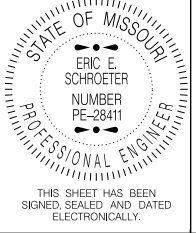
(S8) STIFFENER #8: 1 EACH

(S6) STIFFENER #6: 1 EACH

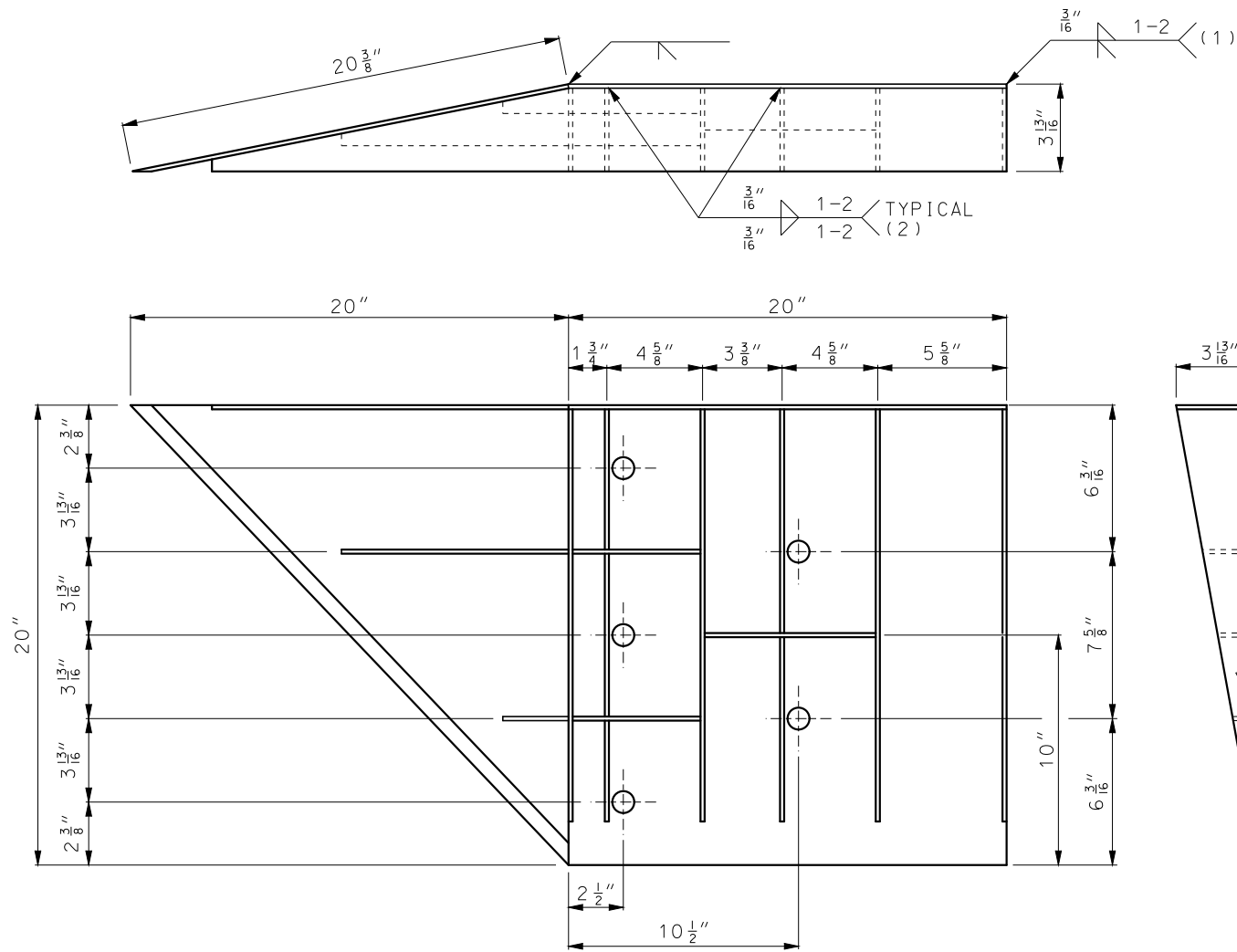
(S4) STIFFENER #4: 1 EACH

(S5) STIFFENER #5: 1 EACH

(S10) STIFFENER #10: 1 EACH

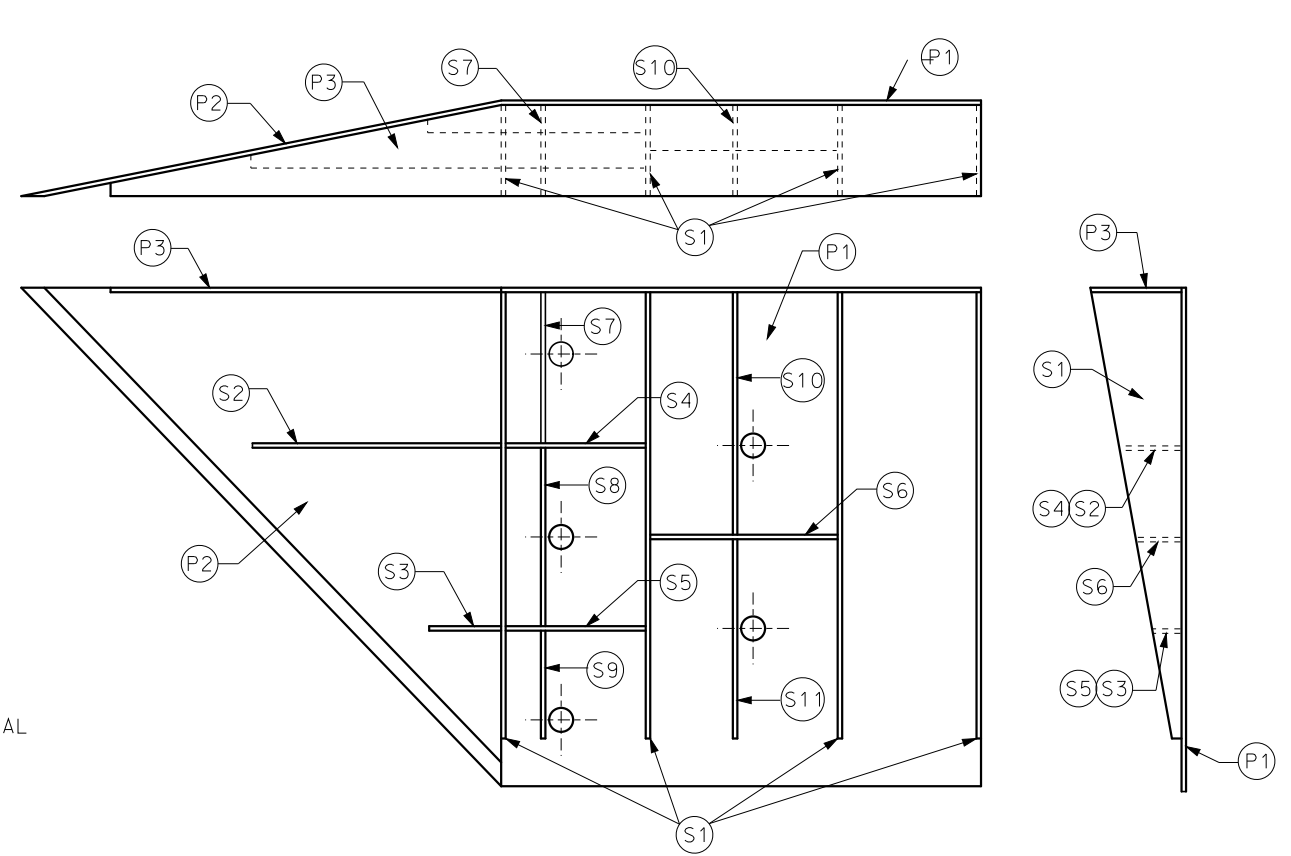
 <b>MISSOURI HIGHWAYS AND TRANSPORTATION COMMISSION</b> 105 WEST CAPITOL JEFFERSON CITY, MO 65102 1-888-ASK-MODOT (1-888-275-6636)	
	<b>BRIDGE ANCHOR SECTION</b> <b>SAFETY BARRIER CURB ON BRIDGE</b> <b>(CONNECTOR PLATE DETAIL)</b>
DATE EFFECTIVE: 07/01/2016 DATE PREPARED: 5/13/2016	SHEET NO. <b>606.22U</b> <b>5 OF 6</b>

IF A SEAL IS PRESENT ON THIS SHEET IT HAS BEEN ELECTRONICALLY SEALED AND DATED.



**WELDING INSTRUCTION**

- (1) STIFFENERS LOCATED AT THE OUTSIDE EDGES OF THE COVER PLATES SHALL BE WELDED AS FOLLOWS:  
SINGLE BEVEL GROOVE WELD ON EXTERNAL SIDES AND 3/16" FILLET WELD BY 1" LONG SPACED AT 2" ON INTERNAL SIDES.
- (2) STEFFENERS LOCATED ON THE INSIDE OF THE COVER PLATE SHALL BE WELDED AS FOLLOWS:  
3/16" FILLET WELD BY 1" LONG SPACED AT 2".



**PLATE AND STIFFENER IDENTIFICATION**

CONNECTOR PLATE DIMENSION (PER ASSEMBLY)				
PLATE	QUANTITY	SHAPE	SIZE (A x B x C x D)	THICKNESS
P1	1	B	20" x 20"	3/16"
P2	1	B	20" x 20" x 28 3/16"	3/16"
P3	1	B	39" x 3 5/8" x 20" x 19 5/16"	3/16"
S1	4	B	18 7/16" x 3 5/8" x 18 3/4"	1/4"
S2	1	B	10 1/4" x 2 7/16" x 10 3/8" x 1/2"	1/4"
S3	1	B	3" x 1 1/16" x 3 1/8" x 1/2"	1/4"
S4	1	B	6 1/8" x 2 7/16"	1/4"
S5	1	B	6 1/8" x 1 1/16"	1/4"
S6	1	B	7 3/4" x 1 3/4"	1/4"
S7	1	A	2 3/16" x 6" x 3 5/8" x 5 7/8"	1/4"
S8	1	A	1 5/32" x 7 1/2" x 2 1/2" x 7 3/8"	1/4"
S9	1	C	6 1/16" x 6 3/16" x 1 3/32"	1/4"
S10	1	A	1 7/8" x 9 7/8" x 3 5/8" x 9 11/16"	1/4"
S11	1	C	8 1/2" x 8 3/4" x 1 13/16"	1/4"

**GENERAL NOTES:**

- COVER PLATE PANELS ARE 3/16" THICK.
- ALL STIFFENERS ARE 1/4" THICK.
- CONNECTOR PLATE SHALL BE FABRICATED FROM ASTM GRADE A36 STEEL AND GALVANIZED.
- FOR GALVANIZED REQUIREMENTS, SEE SEC 1040 OF THE STANDARD SPECIFICATIONS.
- ALL HOLE DIAMETERS SHALL BE 1".

**MISSOURI HIGHWAYS AND TRANSPORTATION COMMISSION**

105 WEST CAPITOL  
JEFFERSON CITY, MO 65102  
1-888-ASK-MODOT (1-888-275-6636)

**BRIDGE ANCHOR SECTION**  
SAFETY BARRIER CURB ON BRIDGE  
(CONNECTOR PLATE DETAIL)  
SINGLE SLOPE BARRIERS

THIS SHEET HAS BEEN SIGNED, SEALED AND DATED ELECTRONICALLY.

DATE EFFECTIVE: 07/01/2016  
DATE PREPARED: 5/13/2016

606.22U

SHEET NO.  
6 OF 6

IF A SEAL IS PRESENT ON THIS SHEET IT HAS BEEN ELECTRONICALLY SEALED AND DATED.