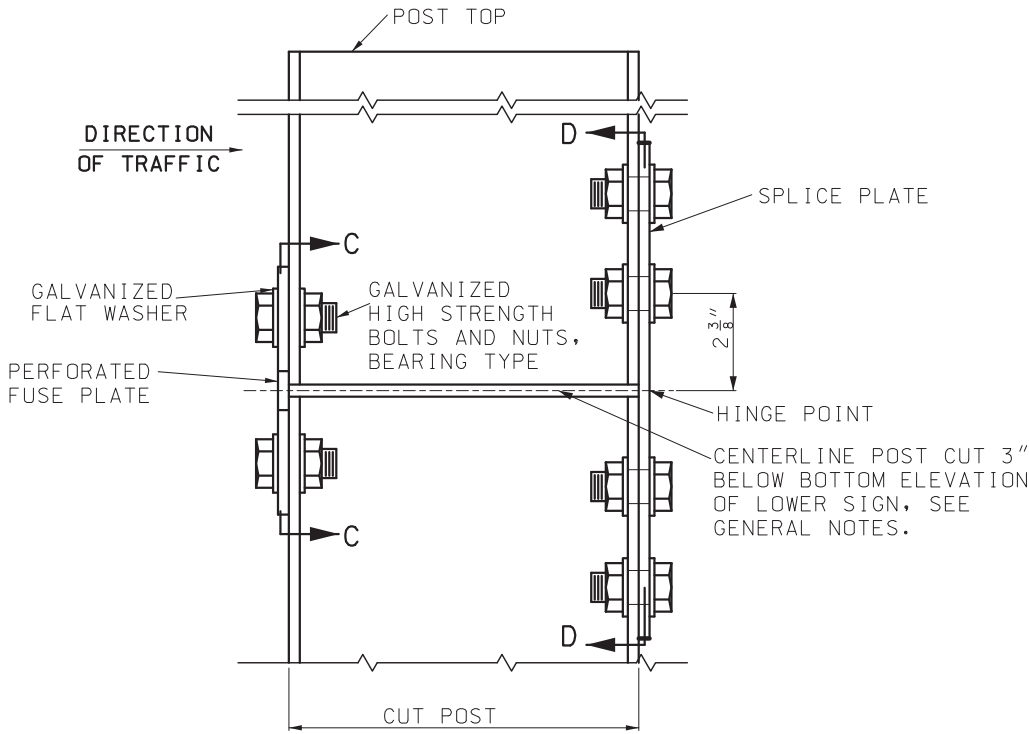
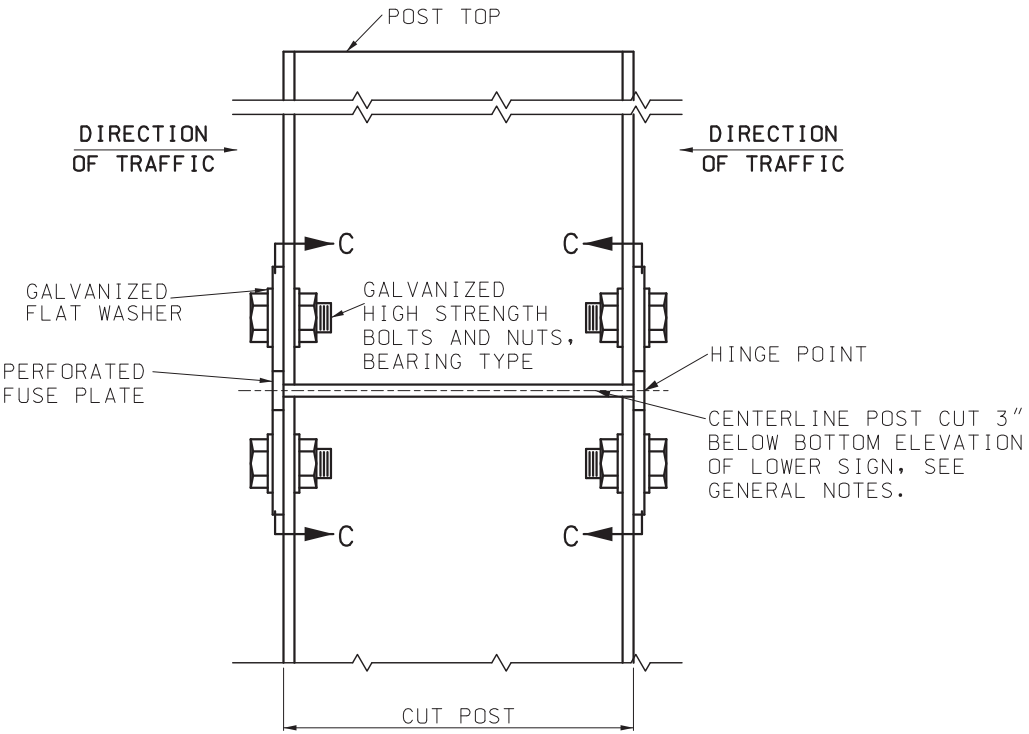


WIDE FLANGE STRUCTURAL STEEL POSTS DESIGN DATA								PERFORATED FUSE PLATE DATA TABLE													SPLICE PLATE DATA TABLE											
POST DES. NO.	NOM. SIZE (IN.)	WEIGHT		DEPTH (IN.)	FLANGE		WEB THICK (IN.)	POST DESIGN NO.	F (IN.)	G (IN.)	H (IN.)	J (IN.)	K (IN.)	L (IN.)	M (IN.)	N (IN.)	d1 (IN.)	d2 (IN.)	P (IN.)	BOLT DIA. (IN.)	WT. (EA.) (LBS.)	POST DESIGN NO.	J (IN.)	K (IN.)	L (IN.)	U (IN.)	d1 (IN.)	BOLT DIA. (IN.)	WT. (EA.) (LBS.)	WASHER		
		LB/FT	LB/IN		WIDTH (IN.)	THICK (IN.)																								OD IN.	ID IN.	THICK IN.
1	W6	9	0.75	5 ⁷ / ₈	4	³ / ₁₆	³ / ₁₆	1	4 ¹ / ₄	1	1 ¹ / ₈	4	2 ¹ / ₄	⁷ / ₈	1	¹ / ₂	⁹ / ₁₆	³ / ₄	³ / ₁₆	¹ / ₂	0.76	1	4	2 ¹ / ₄	⁷ / ₈	³ / ₁₆	⁹ / ₁₆	¹ / ₂	2.45	1 ³ / ₁₆	⁵ / ₈	¹ / ₈
2	W6	15	1.25	6	6	¹ / ₄	¹ / ₄	2	5	1 ¹ / ₄	1 ¹ / ₄	6	3 ¹ / ₂	1 ¹ / ₄	1 ¹ / ₂	³ / ₄	¹¹ / ₁₆	1 ¹ / ₄	¹ / ₄	⁵ / ₈	1.67	2	6	3 ¹ / ₂	1 ¹ / ₄	¹ / ₄	¹¹ / ₁₆	⁵ / ₈	4.89	1 ⁵ / ₁₆	¹¹ / ₁₆	¹ / ₈
3	W8	18	1.50	8 ¹ / ₈	5 ¹ / ₄	⁵ / ₁₆	¹ / ₄	3	5	1 ¹ / ₄	1 ¹ / ₄	5 ¹ / ₄	2 ³ / ₄	1 ¹ / ₄	1 ¹ / ₄	³ / ₄	¹¹ / ₁₆	1 ¹ / ₁₆	¹ / ₄	⁵ / ₈	1.51	3	5 ¹ / ₄	2 ³ / ₄	1 ¹ / ₄	⁵ / ₁₆	¹¹ / ₁₆	⁵ / ₈	5.32	1 ¹⁵ / ₃₂	¹³ / ₁₆	¹ / ₈
4	W10	22	1.83	10 ¹ / ₈	5 ³ / ₄	³ / ₈	¹ / ₄	4	6	1 ¹ / ₂	1 ¹ / ₂	5 ³ / ₄	2 ³ / ₄	1 ¹ / ₂	1 ³ / ₈	¹³ / ₁₆	¹³ / ₁₆	1 ¹ / ₈	⁵ / ₁₆	³ / ₄	2.52	4	5 ³ / ₄	2 ³ / ₄	1 ¹ / ₂	⁵ / ₁₆	¹³ / ₁₆	³ / ₄	5.75			
5	W10	26	2.17	10 ³ / ₈	5 ³ / ₄	⁷ / ₁₆	¹ / ₄	5	6	1 ¹ / ₂	1 ¹ / ₂	5 ³ / ₄	2 ³ / ₄	1 ¹ / ₂	1 ³ / ₈	¹³ / ₁₆	¹³ / ₁₆	1 ¹ / ₈	⁵ / ₁₆	³ / ₄	2.52	5	5 ³ / ₄	2 ³ / ₄	1 ¹ / ₂	⁷ / ₁₆	¹³ / ₁₆	³ / ₄	8.04			
6	W12	35	2.92	12 ¹ / ₂	6 ¹ / ₂	¹ / ₂	⁵ / ₁₆	6	6	1 ¹ / ₂	1 ¹ / ₂	6 ¹ / ₂	3 ¹ / ₂	1 ¹ / ₂	1 ⁵ / ₈	¹³ / ₁₆	¹³ / ₁₆	1 ⁵ / ₁₆	³ / ₈	³ / ₄	3.35	6	6 ¹ / ₂	3 ¹ / ₂	1 ¹ / ₂	¹ / ₂	¹³ / ₁₆	³ / ₄	10.47			

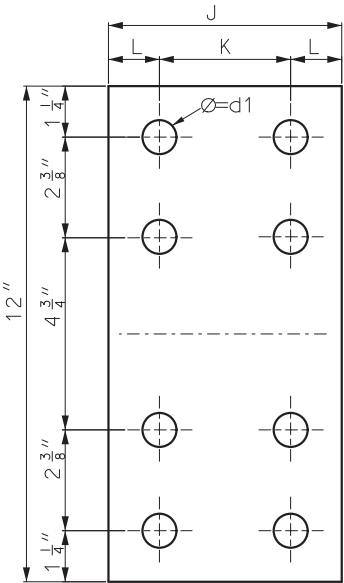
THE WEIGHT OF STRUCTURAL STEEL POSTS SHOWN IN THE CONTRACT HAS BEEN COMPUTED USING THE WEIGHTS SHOWN.



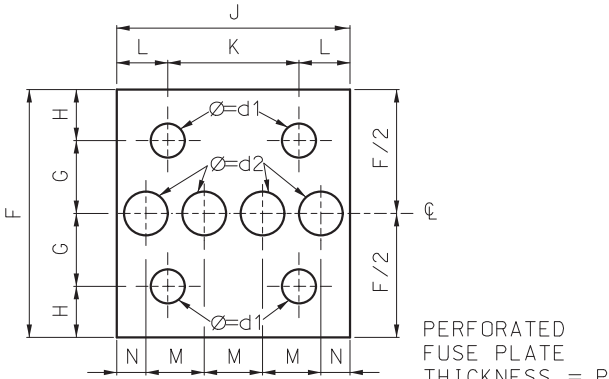
ONE DIRECTION BREAKAWAY



TWO DIRECTION BREAKAWAY



ELEVATION D-D



ELEVATION C-C

ALL HOLES SHALL BE DRILLED. ALL PLATE CUTS SHALL PREFERABLY BE SAW CUTS. HOWEVER: FLAME CUTTING WILL BE PERMITTED PROVIDED ALL EDGES ARE GROUND.

PERFORATED FUSE PLATE AND SPICE PLATE SHALL BE FABRICATED FROM ASTM A 36 STRUCTURAL STEEL.

NOTES:

FOR GENERAL NOTES, SEE SHEET 1.

FOR ROADWAYS WHERE TRAFFIC MAY STRIKE THE BACKSIDE OF THE POST, PERFORATED FUSE PLATES SHALL BE INSTALLED ON BOTH SIDES OF THE POST.

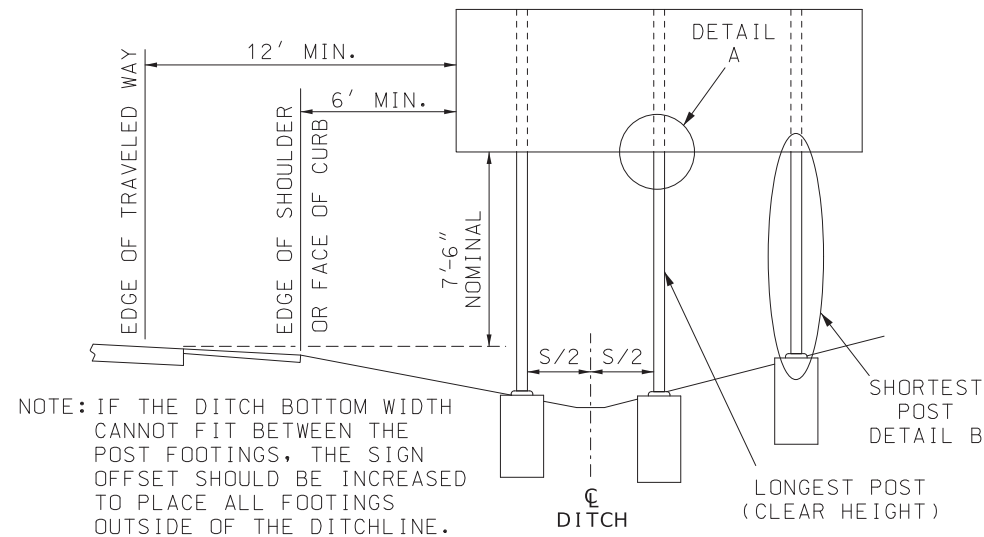
MISSOURI HIGHWAYS AND TRANSPORTATION COMMISSION
105 WEST CAPITOL
JEFFERSON CITY, MO 65102
1-888-ASK-MODOT (1-888-275-6636)

POST INSTALLATION DETAILS
HINGE DETAILS
WIDE FLANGE (WF) POSTS

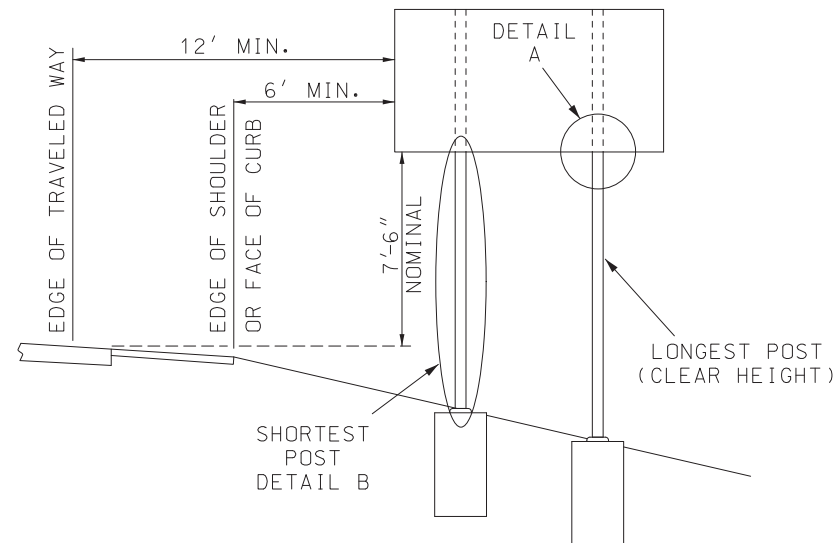
DATE EFFECTIVE: 7/1/2025
DATE PREPARED: 3/17/2025

903.03BT

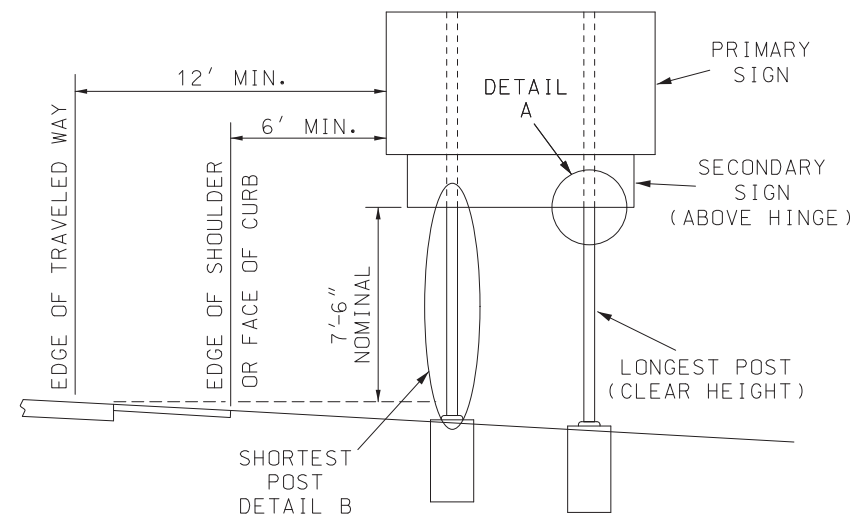
SHEET NO.
2 OF 12



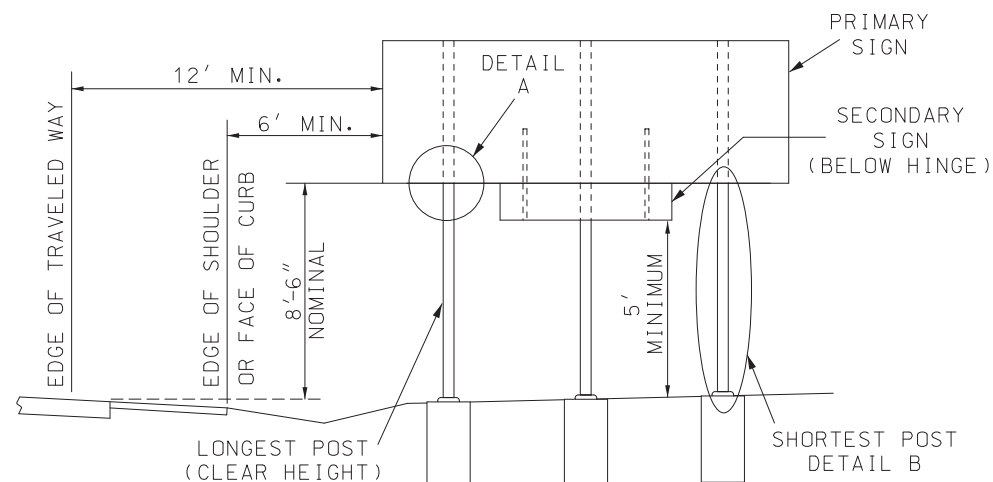
DITCH SECTION



FILL SECTION

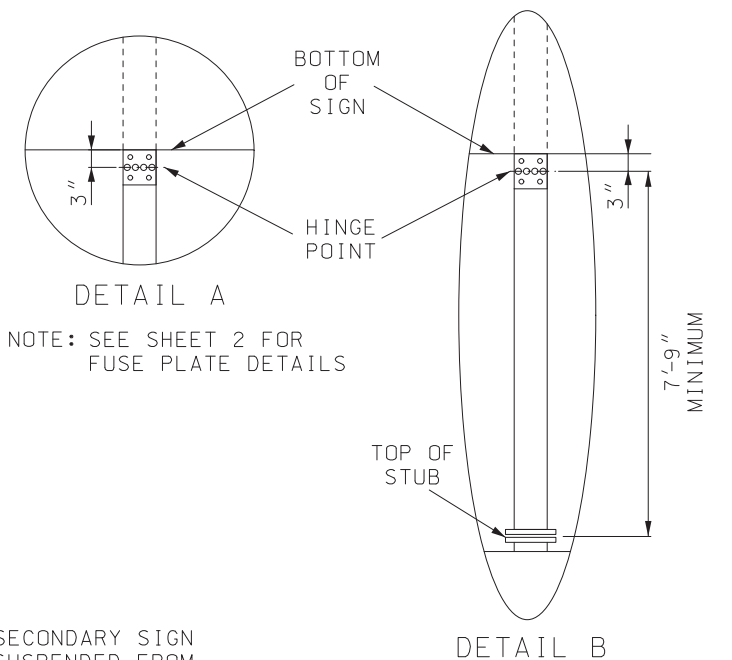


SECONDARY SIGN INSTALLATION
ATTACHED TO SIGN POSTS



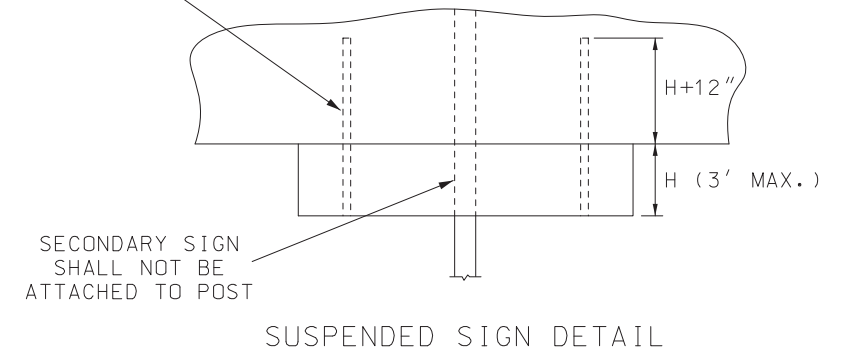
SECONDARY SIGN INSTALLATION
SUSPENDED FROM PRIMARY SIGN

NOTE: THIS METHOD IS ONLY USED IF THE SECONDARY SIGN IS TOO NARROW TO ATTACH TO ALL POSTS.



NOTE: SEE SHEET 2 FOR FUSE PLATE DETAILS

SECONDARY SIGN
SUSPENDED FROM
PRIMARY SIGN USING
3" ALUMINUM I-BEAM

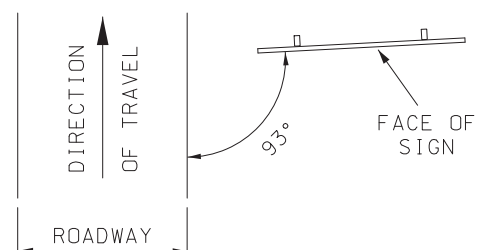


GENERAL NOTES:

FOR ADDITIONAL INFORMATION ON THE INSTALLATION OF WIDE FLANGE POSTS, SEE SHEET 1 AND 2.

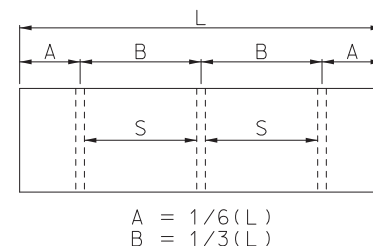
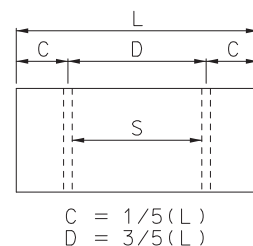
THE MOUNTING HEIGHT OF THE SIGN, MEASURED FROM THE ROAD SURFACE, SHALL ONLY BE INCREASED TO ENSURE THE SHORTEST POST IS A MINIMUM 7'9".

THE CORRECT NUMBER AND SIZE OF POSTS REQUIRED IS CALCULATED BASED ON THE SIGN HEIGHT, WIDTH AND THE CLEAR HEIGHT. THE CLEAR HEIGHT IS THE LENGTH OF THE LONGEST POST MEASURED FROM THE TOP OF THE STUB TO THE HINGE POINT AND DIRECTLY EFFECTS THE NUMBER AND SIZE OF POSTS REQUIRED TO SUPPORT A SIGN.





SIGN SKEWED 93° FROM ROADWAY
TO MINIMIZE REFLECTIVE GLARE

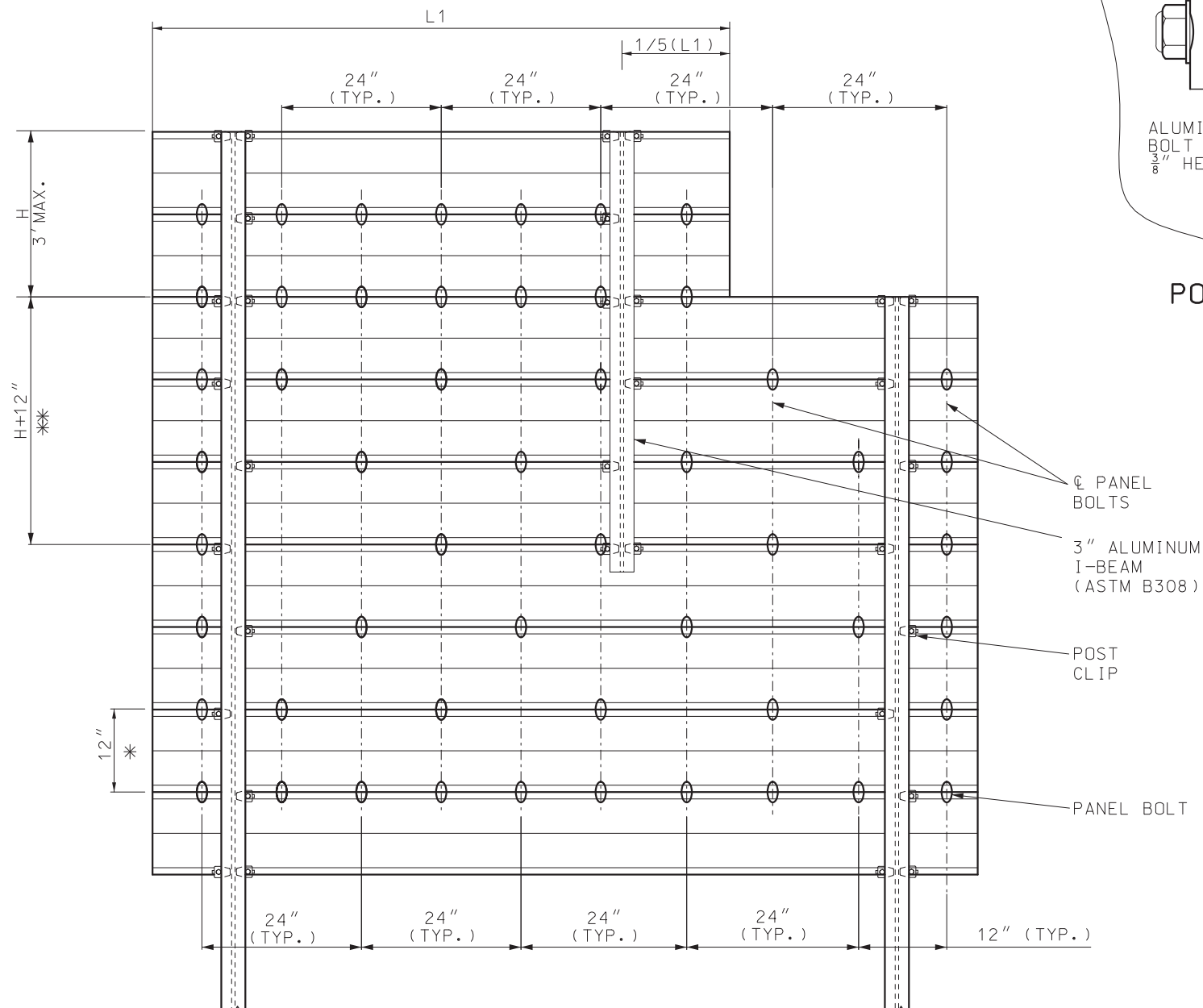
SIGN ORIENTATION



POST DESIGNS 3, 4, 5 AND 6 (18 LBS/FT OR HEAVIER) "S" SHALL BE A MINIMUM OF 7'
POST DESIGNS 1 AND 2 "S" MAY BE LESS THAN 7'
FOR "L" OF 6' TO 17' TYPICALLY USE TWO POSTS
FOR "L" GREATER THAN 17' TYPICALLY USE THREE POSTS
DO NOT USE THREE POSTS FOR "L" LESS THAN 11'

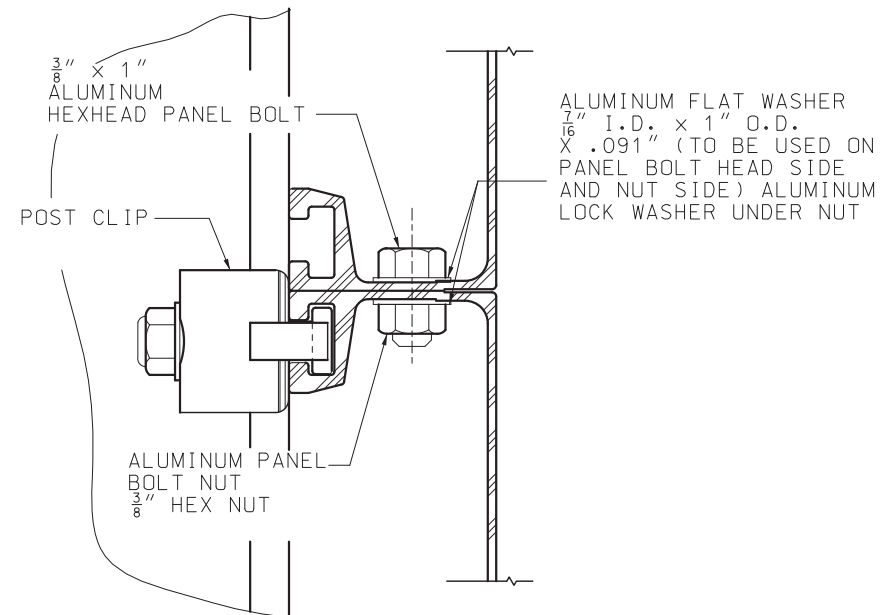
POST SPACING

 MISSOURI HIGHWAYS AND TRANSPORTATION COMMISSION 105 WEST CAPITOL JEFFERSON CITY, MO 65102 1-888-ASK-MODOT (1-888-275-6636)		
	POST INSTALLATION DETAILS TYPICAL SECTION, MOUNTING HEIGHT AND POST SPACING WIDE FLANGE (WF) POSTS	
	DATE EFFECTIVE: 7/1/2025 DATE PREPARED: 3/17/2025	903.03BT

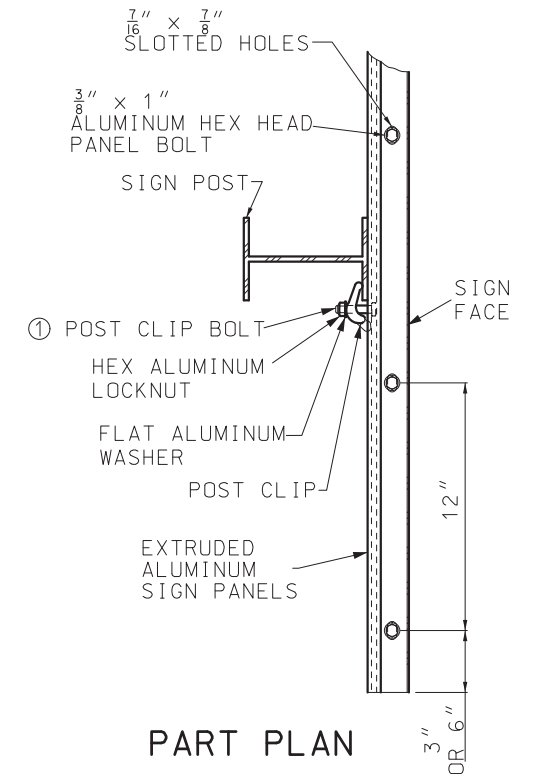


PANEL BOLT LOCATION

* EXTRUDED ALUMINUM PANEL.
 ** APPLIES TO SIGNS SUSPENDED ABOVE OR BELOW THE PRIMARY SIGN IF SECONDARY SIGN IS NOT ATTACHED TO THE MAIN SIGN POSTS.



POST CLIP DETAIL



PART PLAN

① SIGNS SHALL BE FIELD ATTACHED TO POSTS WITH POST CLIPS AND BOLTS, SEE POST CLIP DETAIL. THE SHANK OF THE POST CLIP BOLT SHALL FIT TIGHTLY AGAINST THE POST FLANGE AFTER THE LOCKNUTS ARE TORQUED. LOCKNUTS ON THE POST CLIP BOLTS SHALL BE TORQUED TO 225 INCH-POUNDS WHEN USING DRY, CLEAN, UNLUBRICATED THREADS.

NOTES:

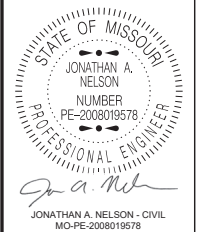
FOR GENERAL NOTES, SEE SHEET 1.

FOR EXTRUDED ALUMINUM PANEL AND POST CLIP DETAILS, SEE STANDARD PLAN 903.02.



MISSOURI HIGHWAYS AND TRANSPORTATION COMMISSION

105 WEST CAPITOL
 JEFFERSON CITY, MO 65102
 1-888-ASK-MODOT (1-888-275-6636)



SIGN MOUNTING DETAILS
 WIDE FLANGE (WF) POSTS

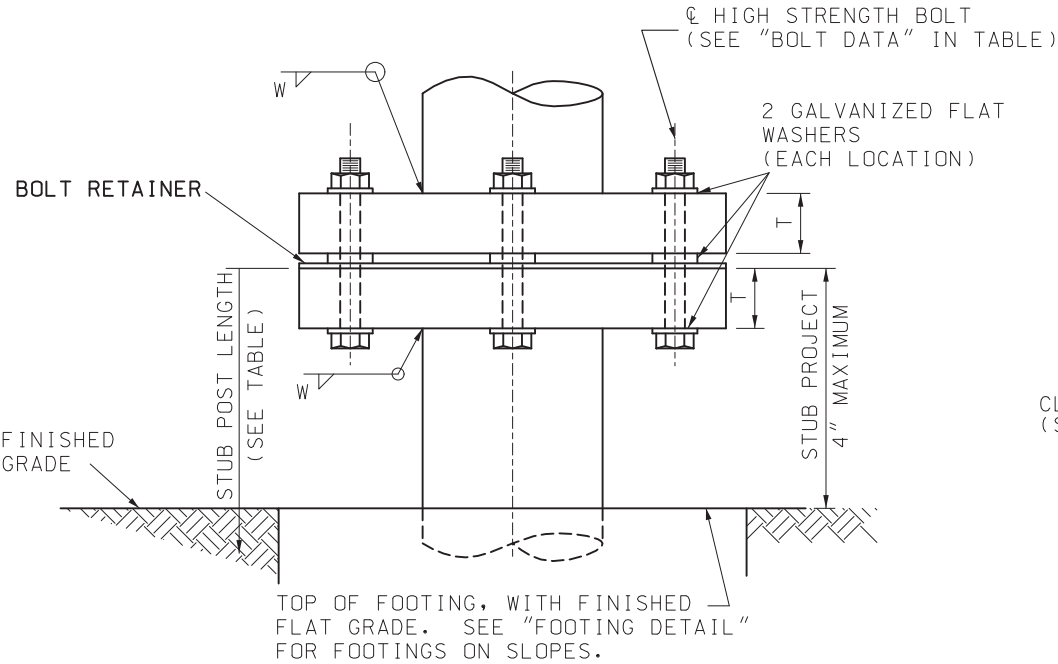
DATE EFFECTIVE: 7/1/2025
 DATE PREPARED: 3/17/2025

903.03BT

SHEET NO.
 4 OF 12

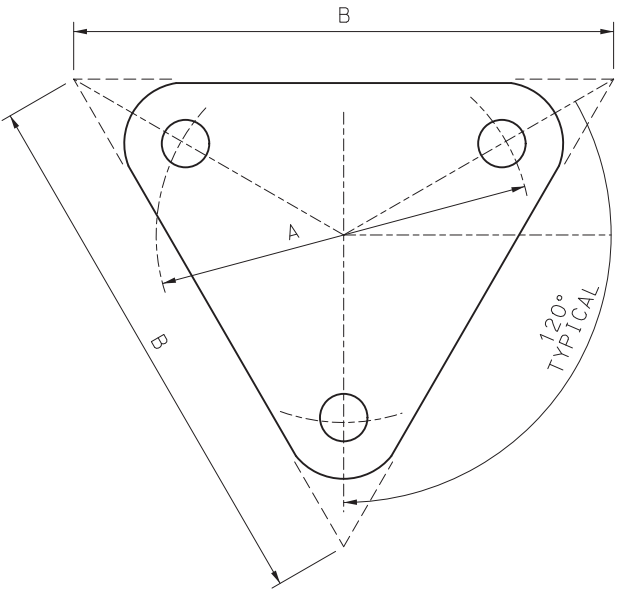
ROUND PIPE POST FOR GROUND MOUNTED SIGNS												
POST	BOLT			WASHER			BASE CONNECTION DATA TABLE (IN.)					
NOM SIZE (IN.-ID)	DIA IN.	LENGTH IN.	TORQUE IN./LB.	OD IN.	ID IN.	THICK IN.	A	B	C	R	T	W
2 1/2	1/2	3 1/2	140	1 1/16	1 7/32	1/8	6 1/4	9	1/4	9/32	1	1/4
4	5/8	3 3/4	345	1 5/16	1 11/16	1/8	7 3/16	10	1/4	3/8	1	5/16

ROUND PIPE POST AND FOOTING DATA TABLE						
NOM. SIZE (IN.)	WEIGHT		STUB LENGTH	FOOTING		CONCRETE C.Y.
	LBS/FT	LBS/IN		DIA.	DEPTH	
2 1/2	5.79	0.48	4' - 3 1/2"	12"	4'-6"	0.13
4	10.79	0.90	5' - 3 1/2"	18"	5'-6"	0.36



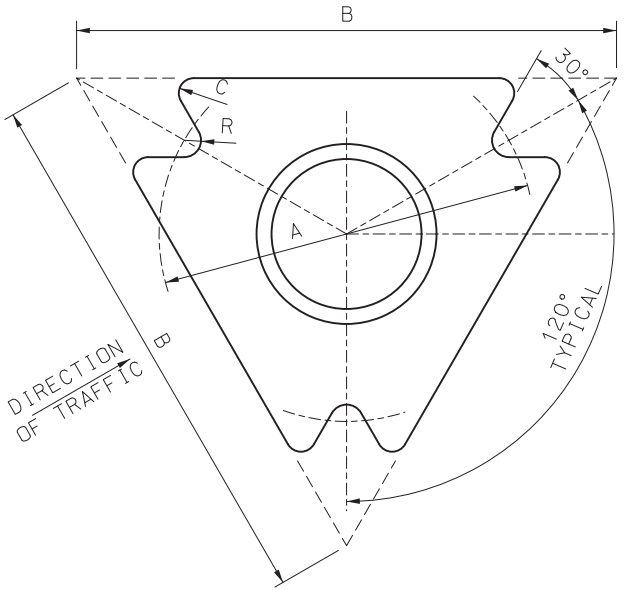
ELEVATION
(STEEL PIPE POST BASE CONNECTION)

MULTI-DIRECTION SLIP BASE

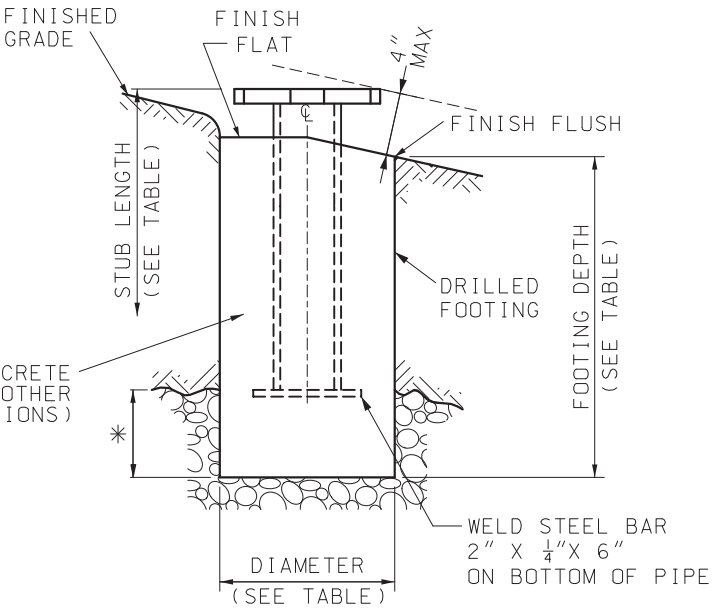


BOLT RETAINER

SHEET METAL BOLT RETAINER CUT FROM 30 GAUGE GALVANIZED SHEET METAL. PLACE BETWEEN BASE PLATES. SIZE VARIES TO FIT PLATE. BOLT HOLES SHALL BE 1/16" LARGER THAN REQUIRED BOLT SIZE.



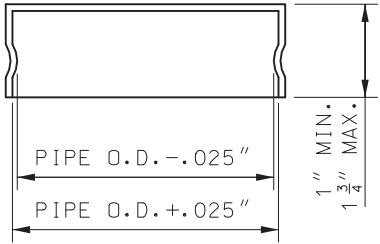
PLAN VIEW



* 2' MAXIMUM IN ROCK FOR 2" DIA. PIPE,
3' MAXIMUM IN ROCK FOR 4" DIA. PIPE.


FOOTING DETAIL

ROLLED CRIMP TO ENGAGE PIPE O.D.




FRICTION CAP

NOTE:
FOR GENERAL NOTES, SEE SHEET 1.
FOR MOUNTING HEIGHT AND OFFSET DETAILS, SEE SHEET 11.



MISSOURI HIGHWAYS AND TRANSPORTATION COMMISSION

105 WEST CAPITOL
JEFFERSON CITY, MO 65102
1-888-ASK-MODOT (1-888-275-6636)



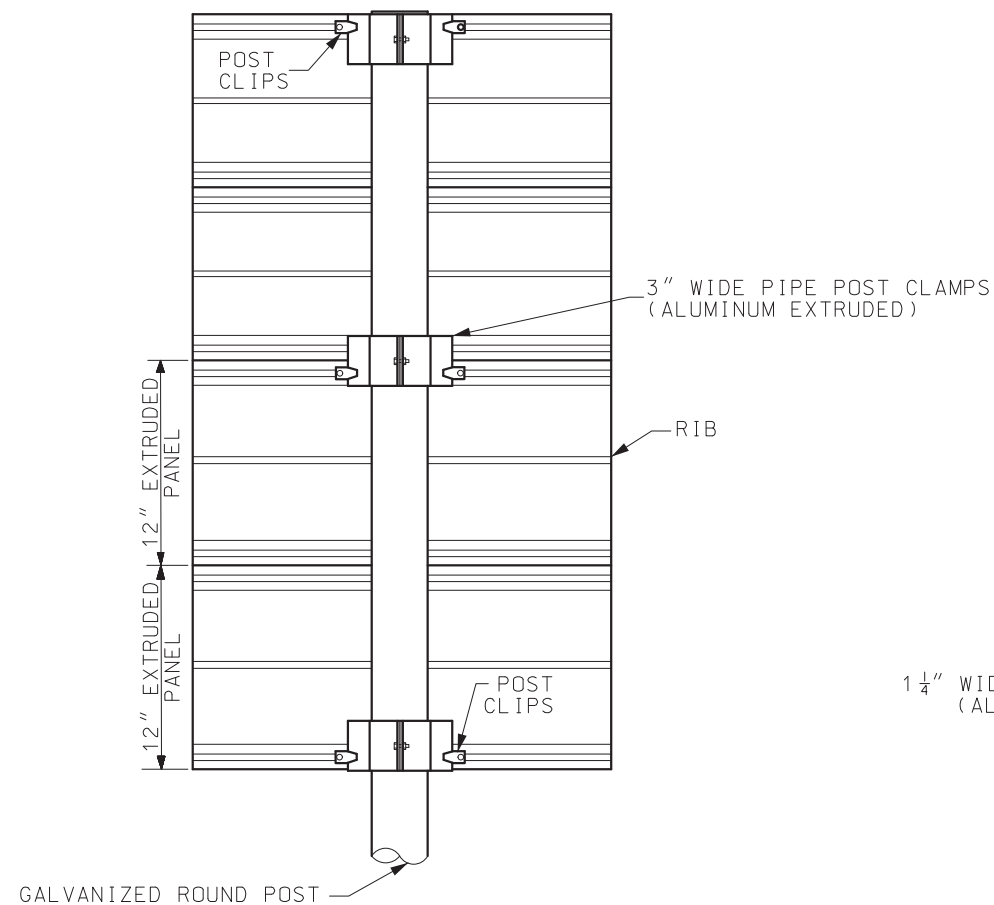
JONATHAN A. NELSON
NUMBER
PE-2008019578
PROFESSIONAL ENGINEER

POST INSTALLATION DETAILS
PIPE POST

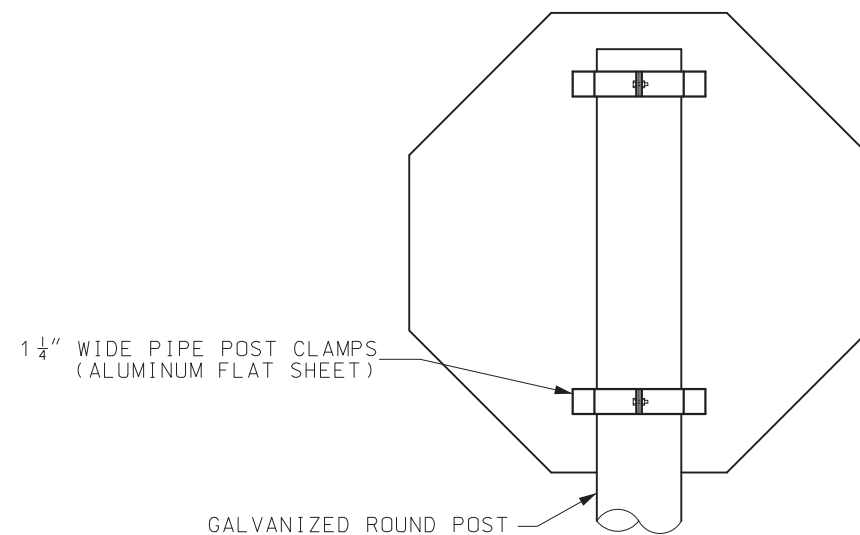
DATE EFFECTIVE: 7/1/2025
DATE PREPARED: 3/17/2025

903.03BT

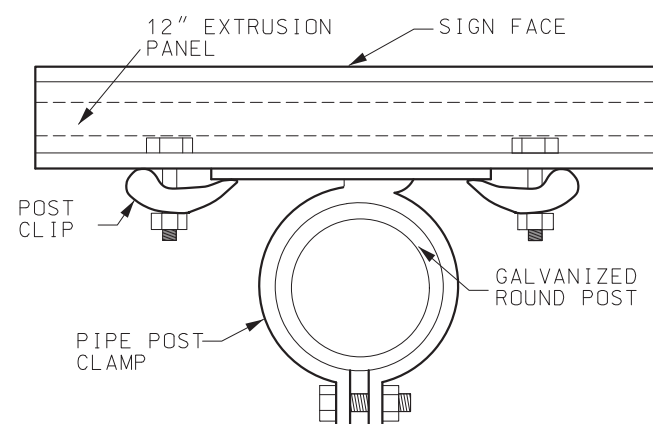
SHEET NO.
5 OF 12



PROFILE VIEW

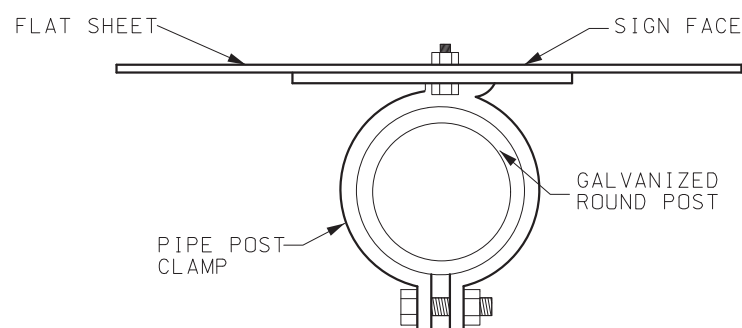


PROFILE VIEW



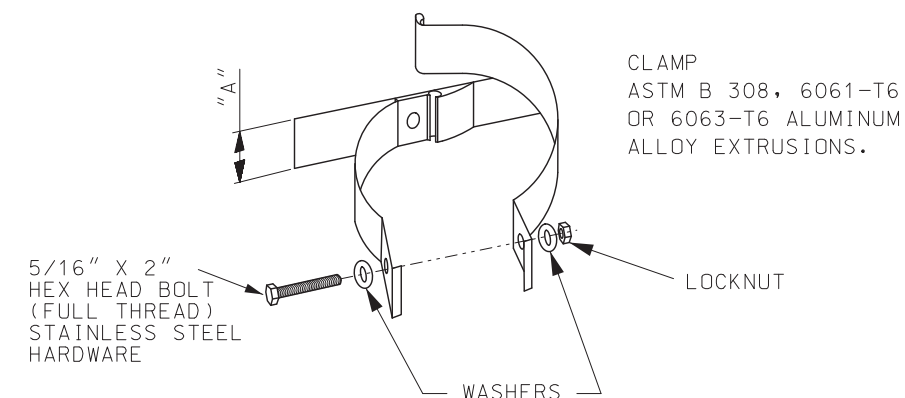
PLAN VIEW

MOUNTING DETAILS FOR EXTRUDED PANELS
ON PIPE POST



PLAN VIEW

MOUNTING DETAILS FOR FLAT SHEET
ON PIPE POST



CLAMP TYPE SIGN SUPPORT
FOR PIPE POST



WIDTH OF PIPE POST CLAMP	
SIGN TYPE	MINIMUM "A"
FLAT	1 1/4"
STRUCTURAL	3"

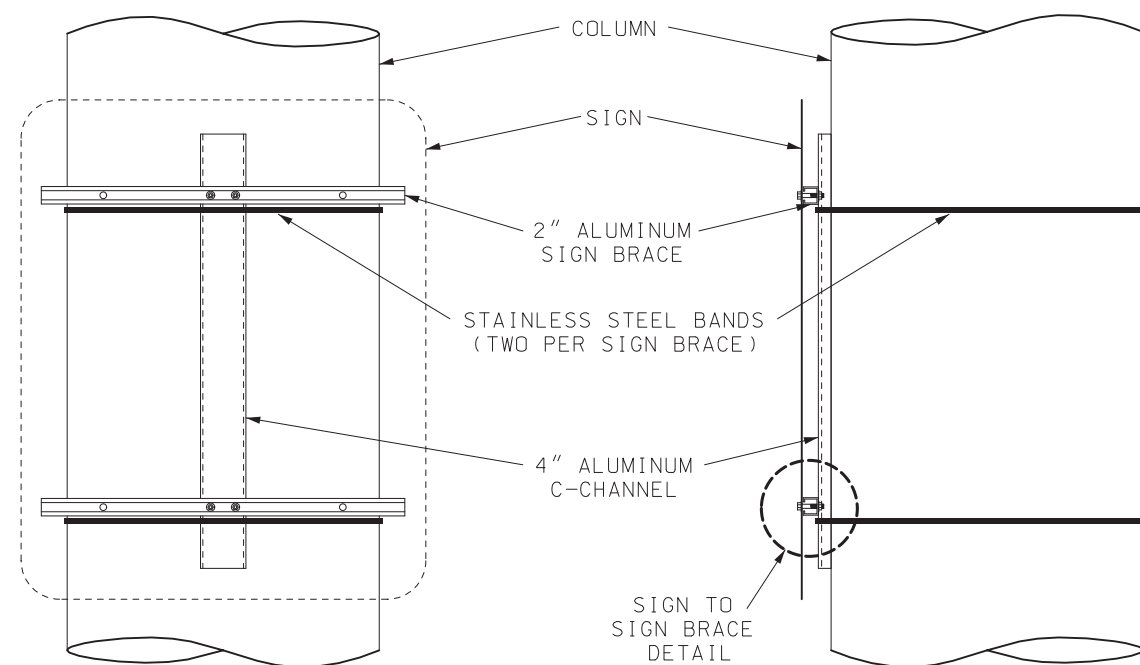
NOTES:

FOR GENERAL NOTES, SEE SHEET 1.

FOR MOUNTING HEIGHT AND OFFSET DETAILS,
SEE SHEET 11.

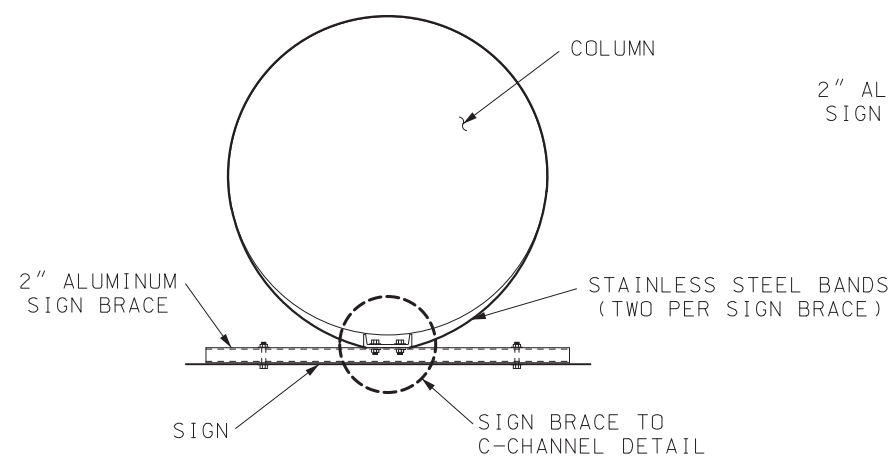
FOR DETAILS OF EXTRUDED ALUMINUM PANEL AND
POST CLIP DETAILS, SEE STANDARD PLAN 903.02.

 MISSOURI HIGHWAYS AND TRANSPORTATION COMMISSION 105 WEST CAPITOL JEFFERSON CITY, MO 65102 1-888-ASK-MODOT (1-888-275-6636)	
	SIGN MOUNTING DETAILS PIPE POST
DATE EFFECTIVE: 7/1/2025 DATE PREPARED: 3/17/2025	903.03BT SHEET NO. 6 OF 12

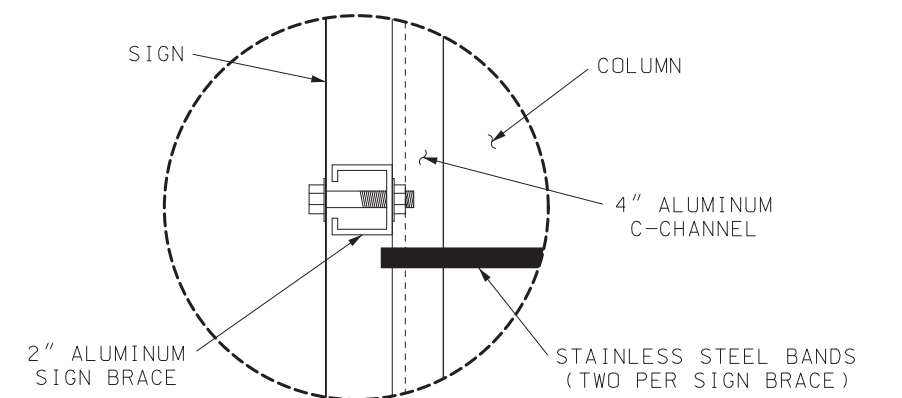


ELEVATION

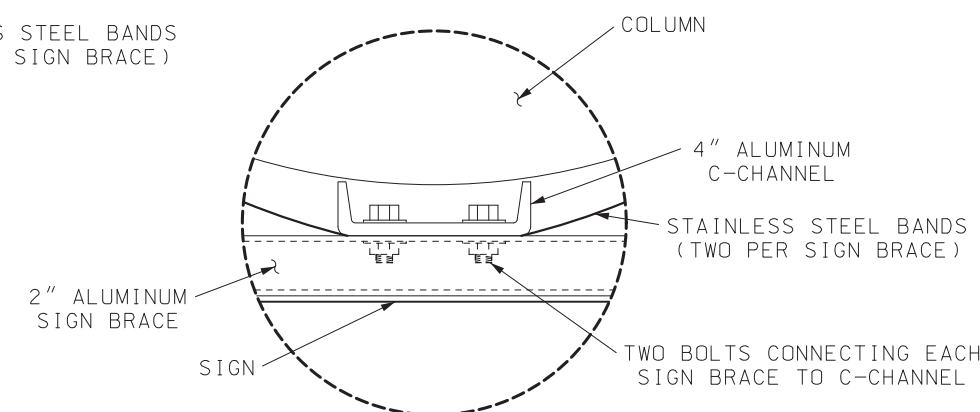
SIDE



PLAN

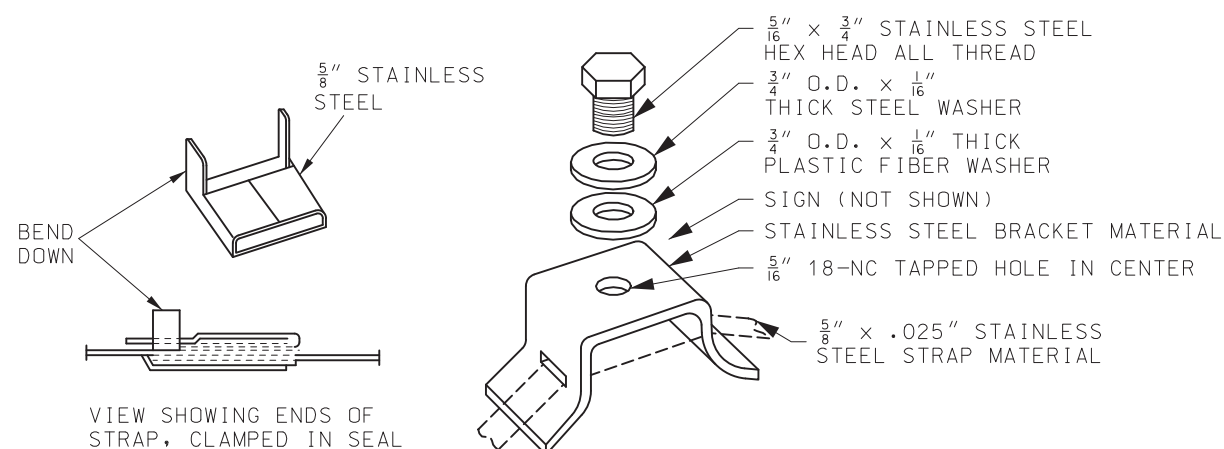


SIGN TO SIGN BRACE DETAIL



SIGN BRACE TO C-CHANNEL DETAIL

SPECIAL MOUNTING FOR FLAT SHEET $\geq 36"$ WIDE ON ROUND STRUCTURES LOCATED ON FREEWAYS



STRAP SEAL

FLARED LEG SIGN BRACKET


MOUNTING DETAILS FOR FLAT SHEET ON ROUND STRUCTURES

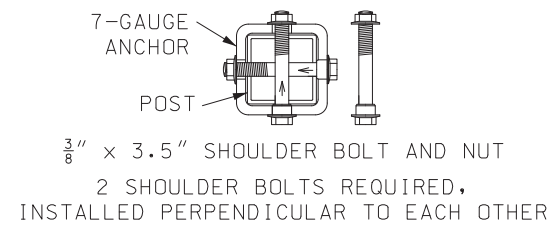
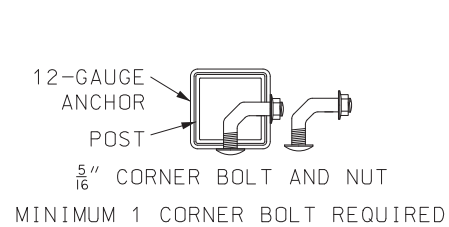
NOTES:

FOR GENERAL NOTES, SEE SHEET 1.

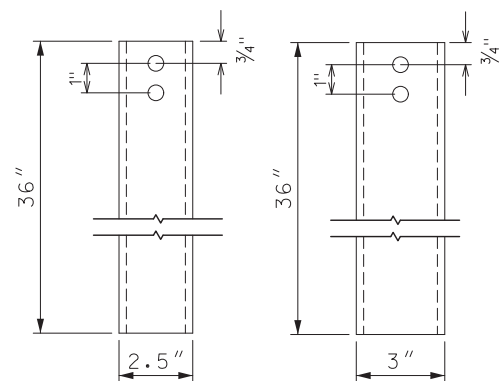
FOR MOUNTING HEIGHT AND OFFSET DETAILS,
SEE SHEET 11.

SPECIAL MOUNTING BASED ON SIGN WIDTH
IN CONJUNCTION WITH ROADWAY TYPE.

 MISSOURI HIGHWAYS AND TRANSPORTATION COMMISSION 105 WEST CAPITOL JEFFERSON CITY, MO 65102 1-888-ASK-MODOT (1-888-275-6636)	
	SIGN MOUNTING DETAILS ROUND STRUCTURES
DATE EFFECTIVE: 7/1/2025 DATE PREPARED: 3/17/2025	SHEET NO. 903.03BT 7 OF 12



12-GAUGE ANCHOR
7-GAUGE ANCHOR
ANCHOR BOLT DETAIL



BOLT HOLE DIAMETER - 17/32"
2 PER SIDE ON ALL 4 SIDES

7-GAUGE ANCHOR
FABRICATION DETAIL

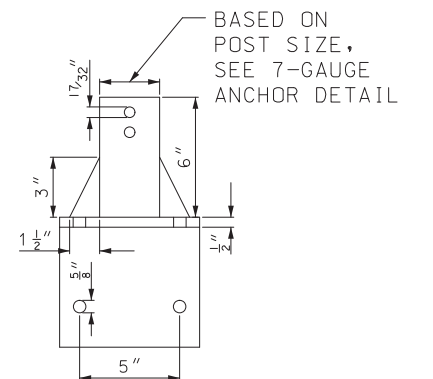
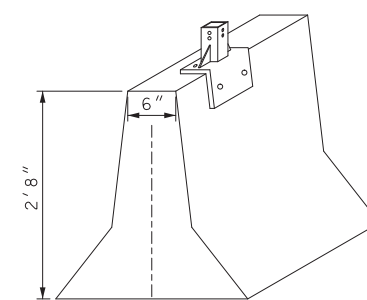
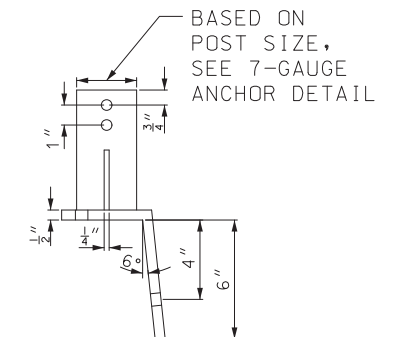
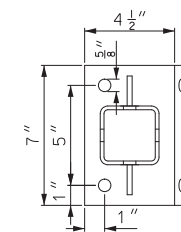
ANCHOR TUBE SHALL BE 7-GAUGE

1/2" X 4 1/2" GALVANIZED MECHANICAL FASTENERS SHALL BE USED TO ATTACH ANCHOR TO BARRIER WALL

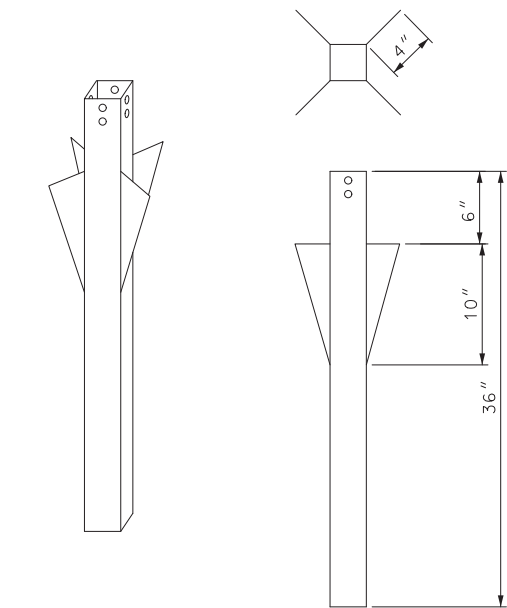
SHOULDER BOLTS SHALL BE USED TO ATTACH PSST POST TO ANCHOR (SEE ANCHOR BOLT DETAIL)

ANCHOR SHALL BE HOT DIPPED GALVANIZED AFTER FABRICATION PER SECTION 1080

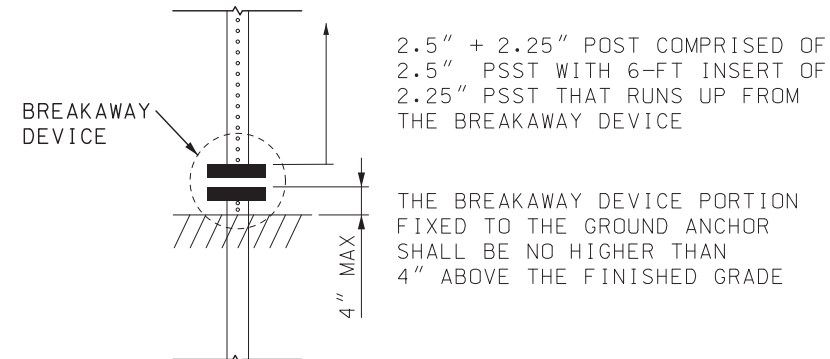
FURNISHING AND INSTALLATION OF BARRIER WALL POST ANCHOR FOR PSST SHALL BE PAID PER EACH AS CONCRETE POST ANCHOR



BARRIER WALL MOUNTING DETAIL

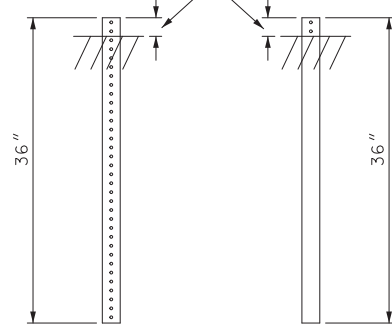


12-GAUGE (NOT SHOWN) OR 7-GAUGE
OMNIDIRECTIONAL/STABILIZED
DRIVEN ANCHOR DETAIL

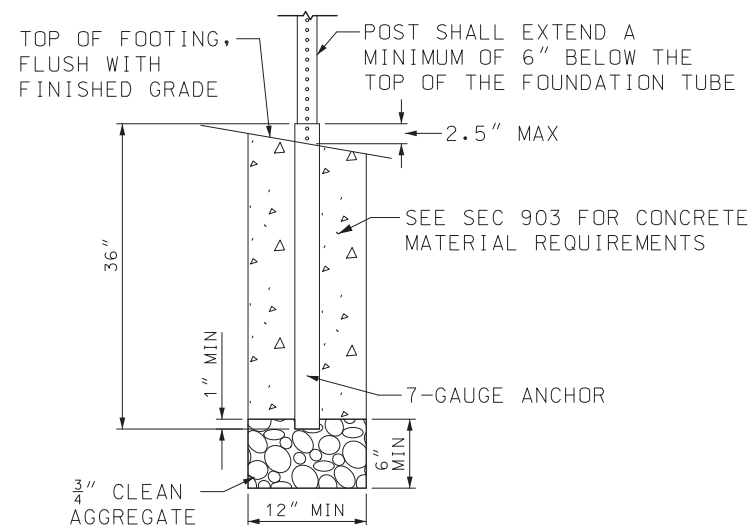


BREAKAWAY AND 2.5" + 2.25" POST DETAIL

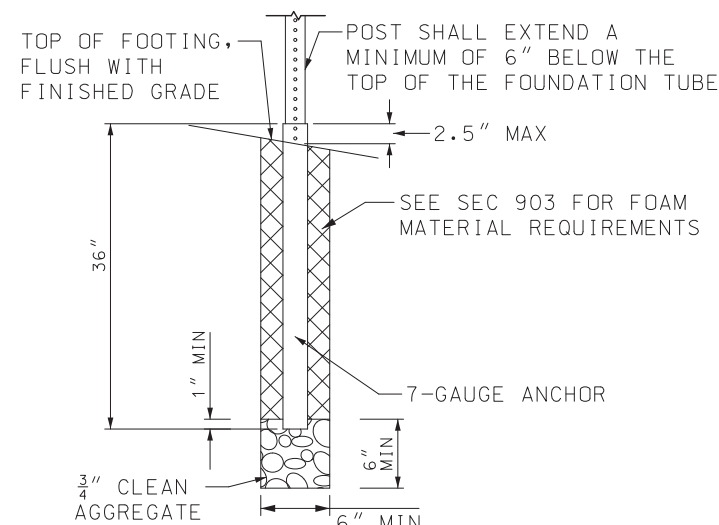
THE ANCHOR SHOULD BE A MAXIMUM OF 2.5" ABOVE THE GROUND LEVEL



12-GAUGE 7-GAUGE
DRIVEN ANCHOR
INSTALLATION DETAIL



CONCRETE FOOTING DETAIL



POLYURETHANE FOAM FOOTING DETAIL

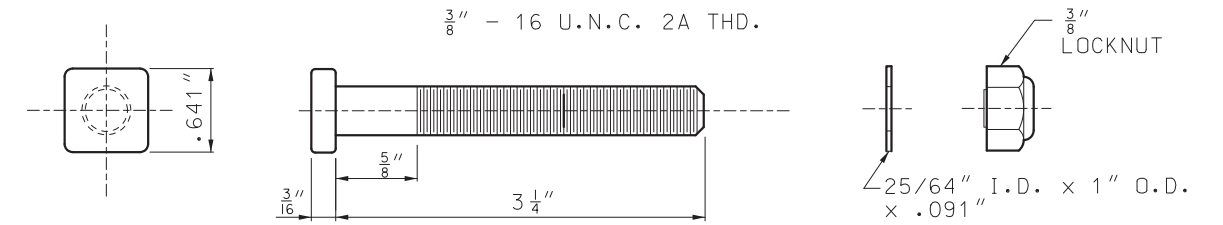
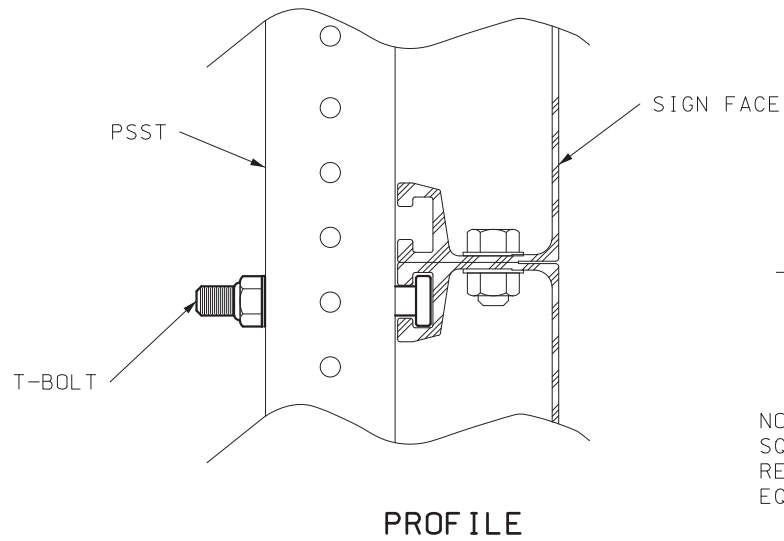
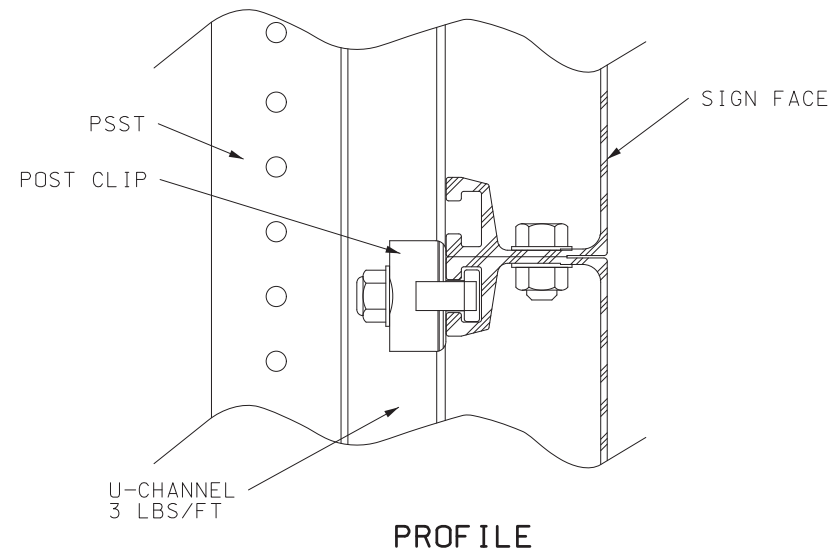
NOTES:

FOR GENERAL NOTES, SEE SHEET 1.

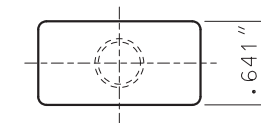
FOR MOUNTING HEIGHT AND OFFSET DETAILS, SEE SHEET 11.

ALL BREAKAWAY DEVICES USED ON AN INSTALLATION SHALL BE CERTIFIED NCHRP 350 COMPLIANT.

<p>MISSOURI HIGHWAYS AND TRANSPORTATION COMMISSION</p> <p>105 WEST CAPITOL JEFFERSON CITY, MO 65102 1-888-ASK-MODOT (1-888-275-6636)</p>		
<p>JONATHAN A. NELSON - CIVIL MO-PE-2008019578</p>	<p>POST INSTALLATION DETAILS</p> <p>PERFORATED SQUARE STEEL TUBE (PSST)</p>	
<p>DATE EFFECTIVE: 7/1/2025</p> <p>DATE PREPARED: 3/17/2025</p>	<p>903.03BT</p>	<p>SHEET NO. 8 OF 12</p>



NOTE:
SQUARE BOLT HEAD SHOWN MAY BE REPLACED WITH
RECTANGULAR BOLT HEAD WITH THE NARROW DIMENSION
EQUAL TO .641".

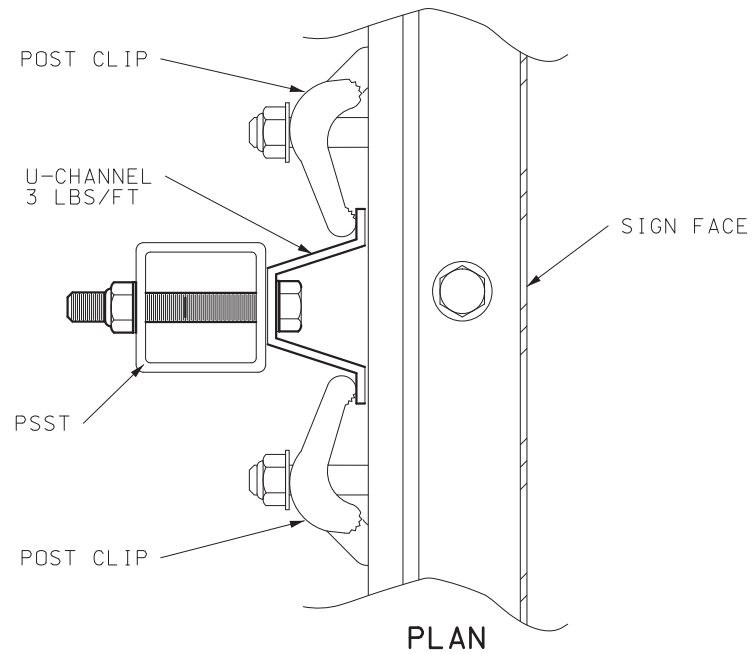


T-BOLT DETAIL

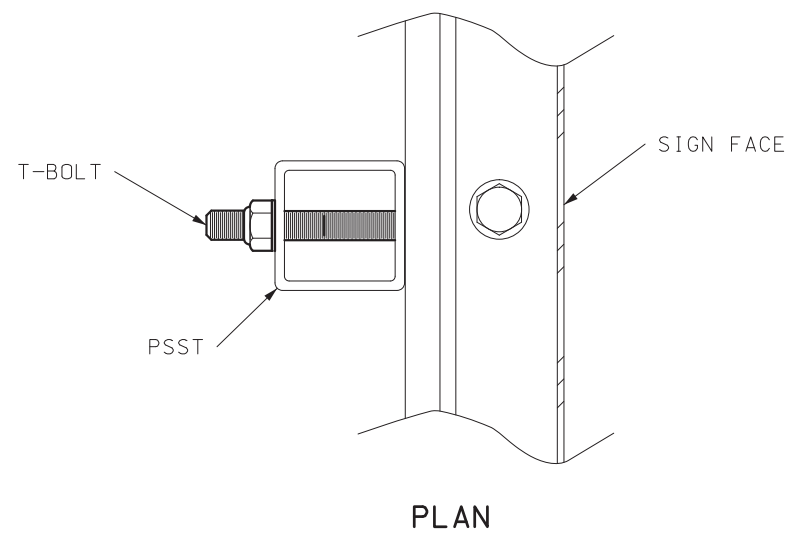
BOLT - $1 \frac{3}{4}$ x $\frac{1}{4}$ ALUMINUM
BOLT - $3 \frac{1}{4}$ x $\frac{1}{4}$ ALUMINUM
HEX LOCKNUT - $\frac{3}{8}$ " ALUMINUM
WASHER - ALUMINUM

NOTES:

- ALUMINUM BOLTS SHALL BE ASTM B 211, 2024-T4 OR 6061-T6
- ALUMINUM FLAT WASHERS SHALL BE ASTM B 209, ALCLAD 2024-T4 OR 2024-T4
- ALUMINUM LOCK NUTS (NYLON INSERT) SHALL BE ASTM B 211 OR 2017-T4



POST CLIP METHOD



T-BOLT METHOD

EXTRUDED PANEL MOUNTING DETAIL

NUMBER OF BOLTS TO ATTACH STEEL CHANNEL TO PSST POST	
SIGN HEIGHT	NO. OF BOLTS PER PSST POST USED
1'	2
2'	3
3'	4
4'	5
5'	6
6'	7
7'	8


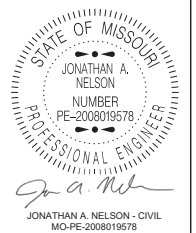
NOTES:

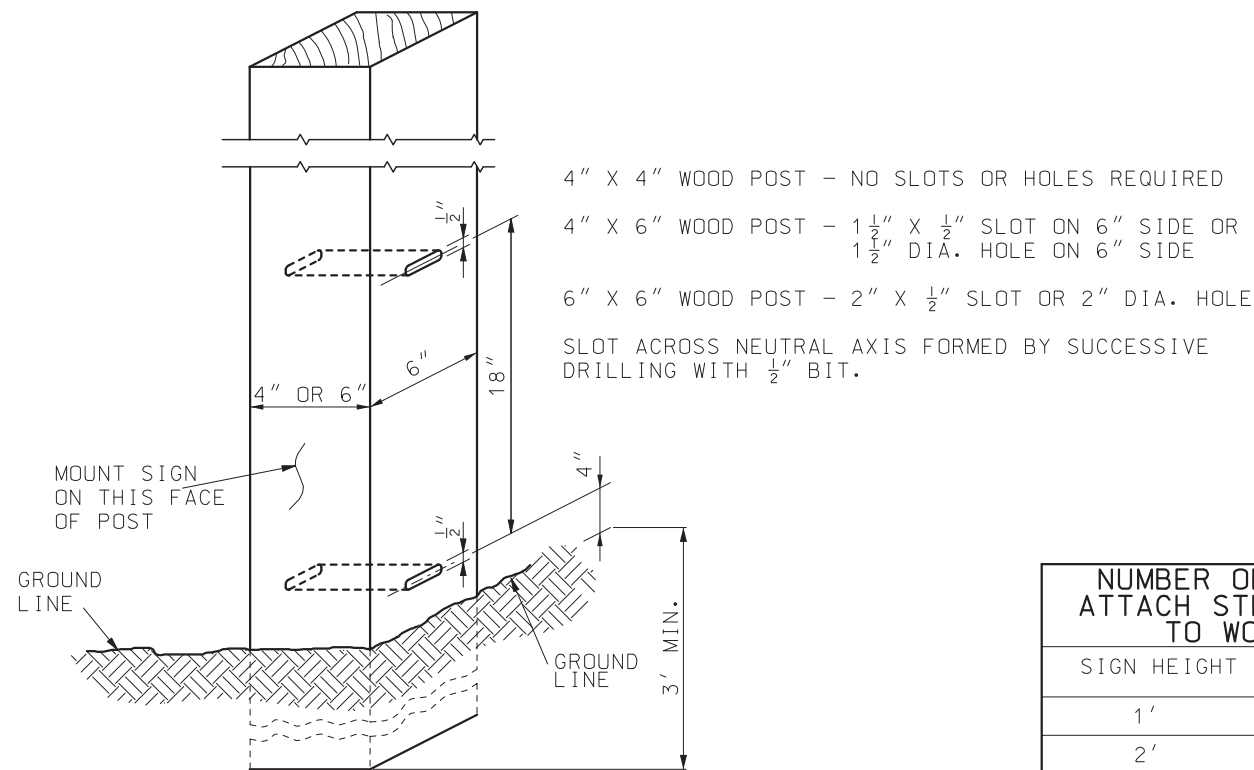
FOR THE GENERAL NOTES, SEE SHEET 1.

FOR MOUNTING HEIGHT AND OFFSET DETAILS,
SEE SHEET 11.

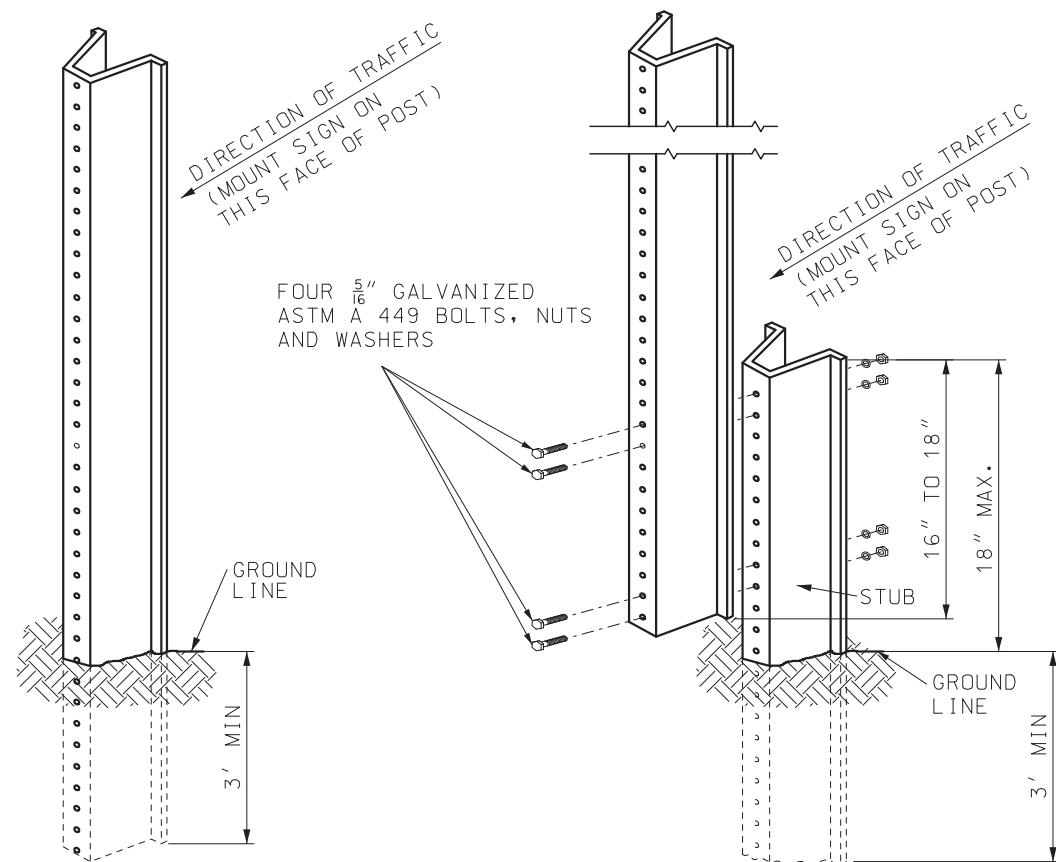
FOR POST CLIP DETAILS, SEE STANDARD PLAN 903.02.

ALTERNATE PSST MOUNTING HARDWARE USE SHALL BE
ON APPROVED LIST.

 <p>MISSOURI HIGHWAYS AND TRANSPORTATION COMMISSION</p> <p>105 WEST CAPITOL JEFFERSON CITY, MO 65102 1-888-ASK-MODOT (1-888-275-6636)</p>	
 <p>JONATHAN A. NELSON - CIVIL MO-PE-2008019578</p>	<p>SIGN MOUNTING DETAILS</p> <p>PERFORATED SQUARE STEEL TUBE (PSST)</p>
<p>DATE EFFECTIVE: 7/1/2025</p> <p>DATE PREPARED: 3/17/2025</p>	<p>903.03BT</p> <p>SHEET NO. 9 OF 12</p>



WOOD POST DETAIL

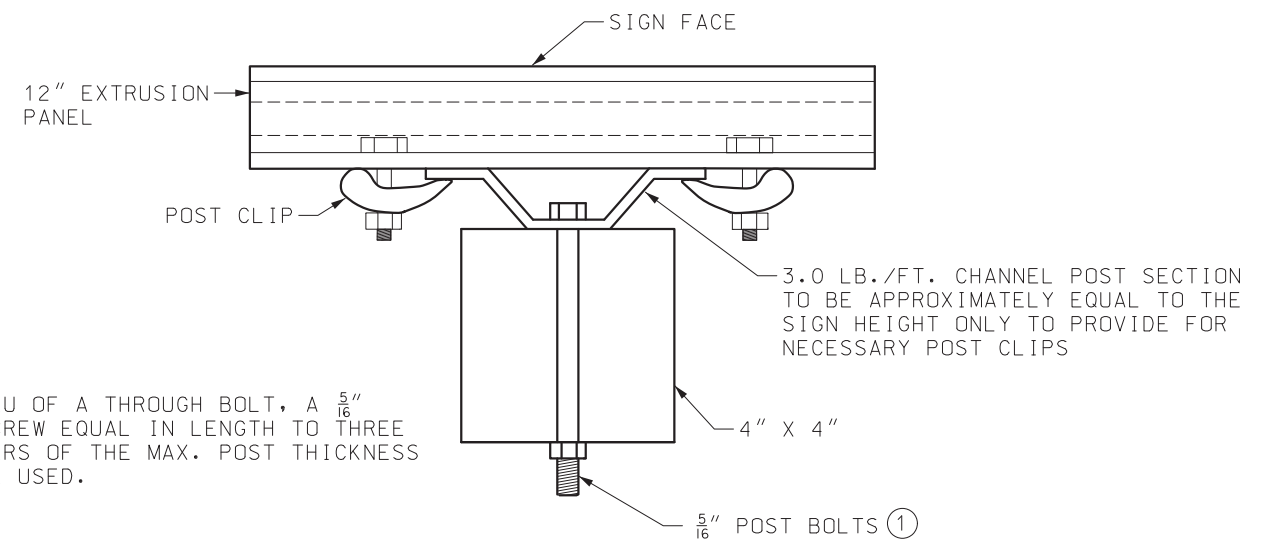


U-CHANNEL POST DETAIL

U-CHANNEL STUB DETAIL
OPTIONAL INSTALLATION

NUMBER OF BOLTS TO ATTACH STEEL CHANNEL TO WOOD POST	
SIGN HEIGHT	NO. OF BOLTS PER WOOD POST USED
1'	2
2'	3
3'	4
4'	5
5'	6
6'	7
7'	8

① IN LIEU OF A THROUGH BOLT, A $\frac{5}{16}$ " LAG SCREW EQUAL IN LENGTH TO THREE QUARTERS OF THE MAX. POST THICKNESS MAY BE USED.



PLAN VIEW

MOUNTING DETAILS FOR EXTRUDED
PANELS ON WOOD POST

NOTES:

FOR GENERAL NOTES, SEE SHEET 1.

ALL POSTS SHALL BE EMBEDDED A MINIMUM OF 3 FEET INTO THE GROUND.

U-CHANNEL POST-STUB OVERLAP SHALL BE POSITIONED ENTIRELY BETWEEN GROUND LINE AND 18" ABOVE GROUND LINE.


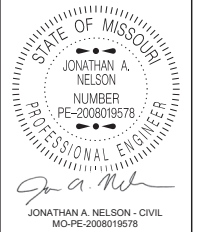
FOR POST CLIP DETAILS, SEE STANDARD PLAN 903.02.

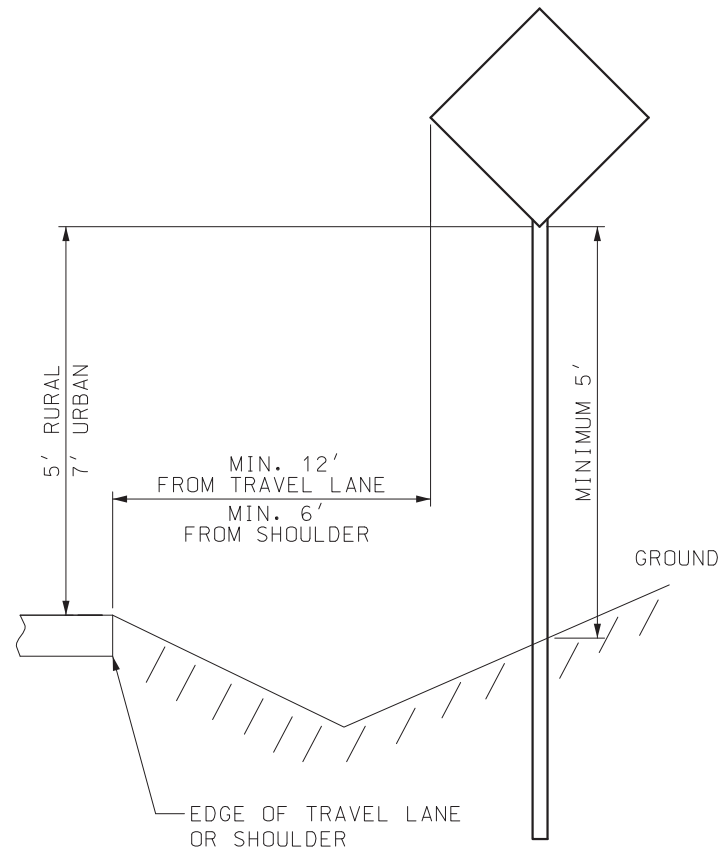
FOR MOUNTING HEIGHT AND OFFSET DETAILS, SEE SHEET 11.

SIGN AREA (SQ.FT.)	POST TYPE	
	U-CHANNEL	WOOD
≤ 10	1 - 3.0 LB./FT.*	1 - 4" X 4"*
> 10 ≤ 16	2 - 3.0 LB./FT.	2 - 4" X 4" 1 - 4" X 6"*
> 16 ≤ 24	2 - 3.0 LB./FT.	2 - 4" X 6"
> 24 ≤ 30	3 - 3.0 LB./FT.	2 - 4" X 6"
> 30 ≤ 50	N/A	2 - 6" X 6"

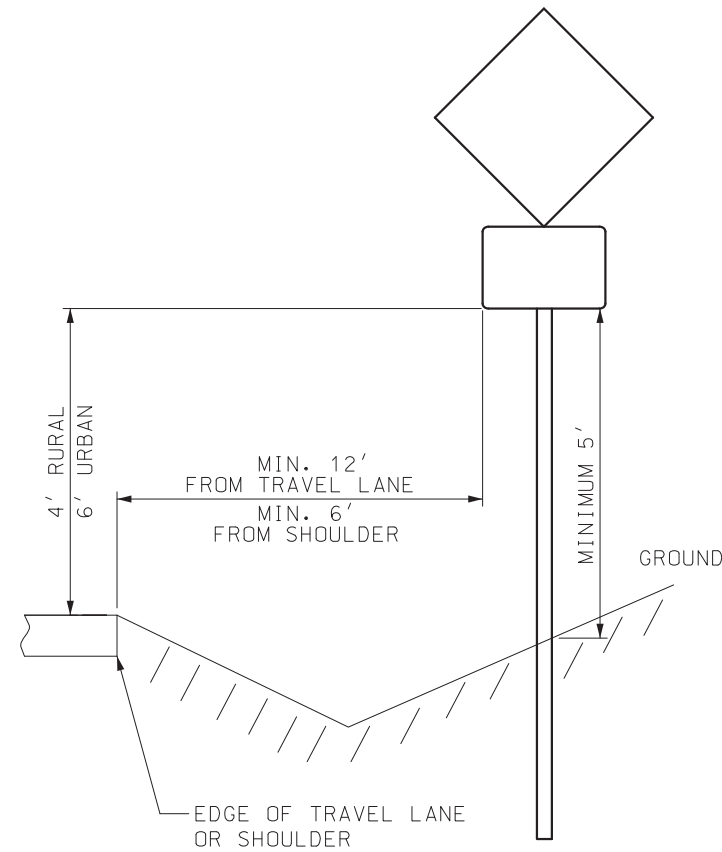
* SIGNS GREATER THAN 4 FEET IN WIDTH REQUIRE TWO POSTS, EXCEPT DIAMOND SHAPED WARNING SIGNS, YIELD SIGNS, AND ONE WAY SIGNS.

POST SIZE REQUIREMENTS

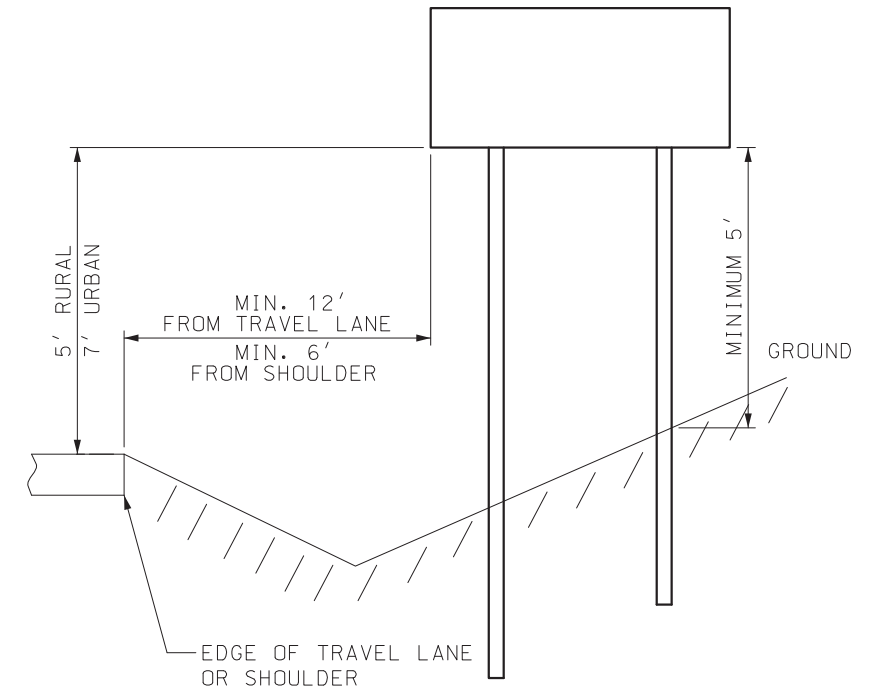
 MISSOURI HIGHWAYS AND TRANSPORTATION COMMISSION 105 WEST CAPITOL JEFFERSON CITY, MO 65102 1-888-ASK-MODOT (1-888-275-6636)	
 JONATHAN A. NELSON - CIVIL MO-PE-2008019578	POST INSTALLATION DETAILS WOOD AND U-CHANNEL POST
DATE EFFECTIVE: 7/1/2025 DATE PREPARED: 3/17/2025	903.03BT SHEET NO. 10 OF 12



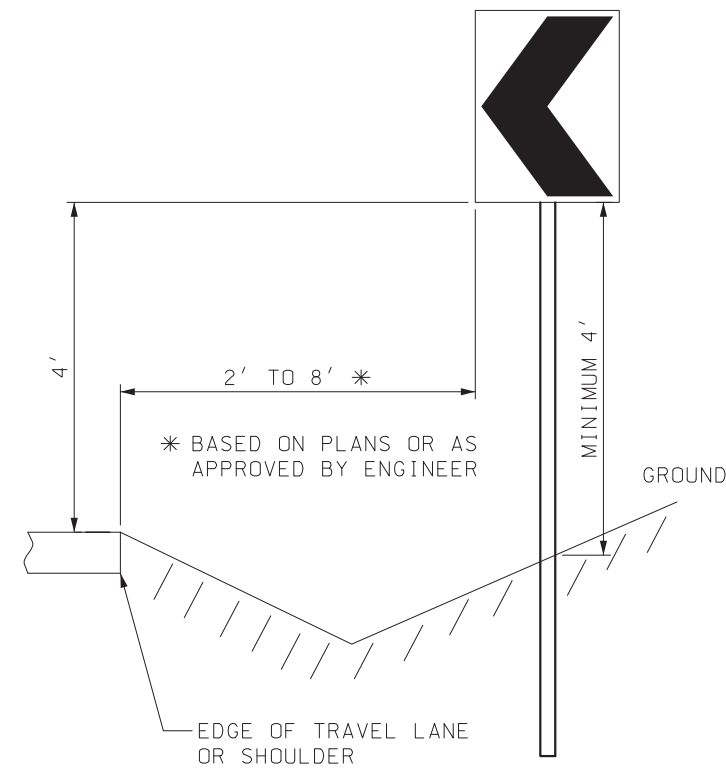
ONE POST – SINGLE SIGN



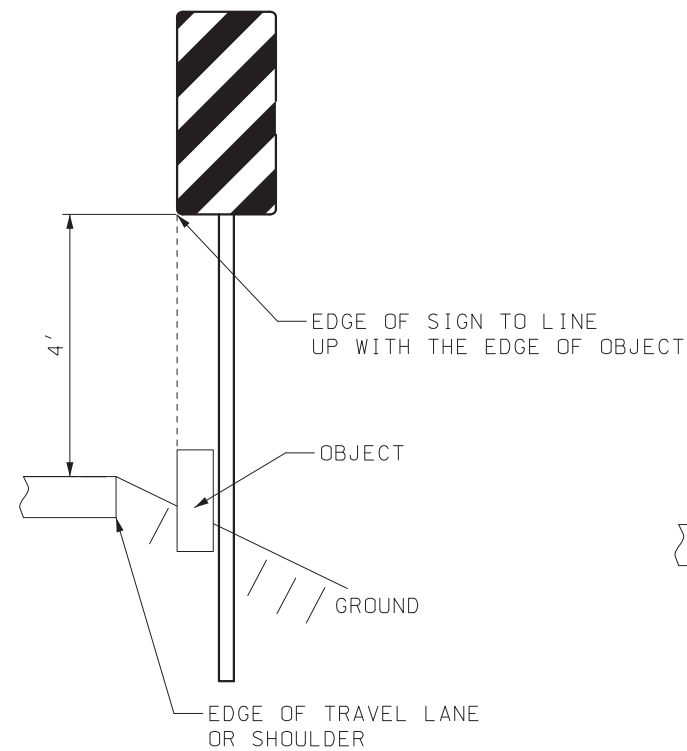
ONE POST – SINGLE SIGN WITH SUPPLEMENTAL PLAGUE



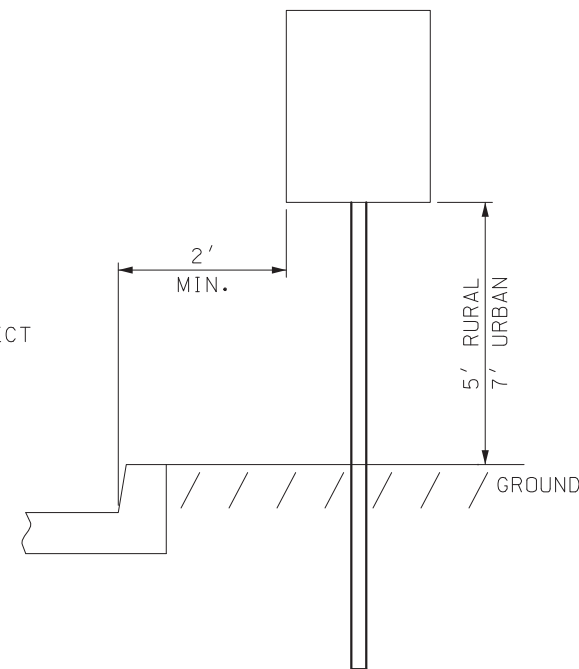
TWO POST



CHEVRON SIGN



TYPE 3 OBJECT MARKER



ADJACENT TO CURB


GENERAL NOTES:

SIGN MOUNTING BOLTS SHALL BE INSTALLED WITH A NYLON WASHER AGAINST THE SIGN FACE WITH A STEEL WASHER BETWEEN THE NYLON WASHER AND BOLT HEAD.

A LOCKNUT SHALL BE USED TO FASTEN THE SIGN TO THE POST.

VERTICAL CLEARANCE FROM THE ROADWAY SHALL BE MET AND INCREASED ONLY TO MEET THE MINIMUM VERTICAL CLEARANCE FROM THE GROUND.

HORIZONTAL OFFSET MAY BE ADJUSTED BASED ON FIELD CONDITIONS.



MISSOURI HIGHWAYS AND TRANSPORTATION COMMISSION

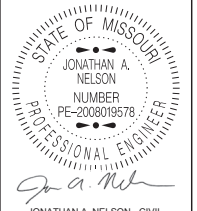
105 WEST CAPITOL
JEFFERSON CITY, MO 65102
1-888-ASK-MODOT (1-888-275-6636)

SIGN MOUNTING DETAILS

MOUNTING HEIGHT & OFFSET

PIPE POSTS, PSST, WOOD

& U-CHANNEL POSTS



JONATHAN A. NELSON - CIVIL
MO-PE-2008019578

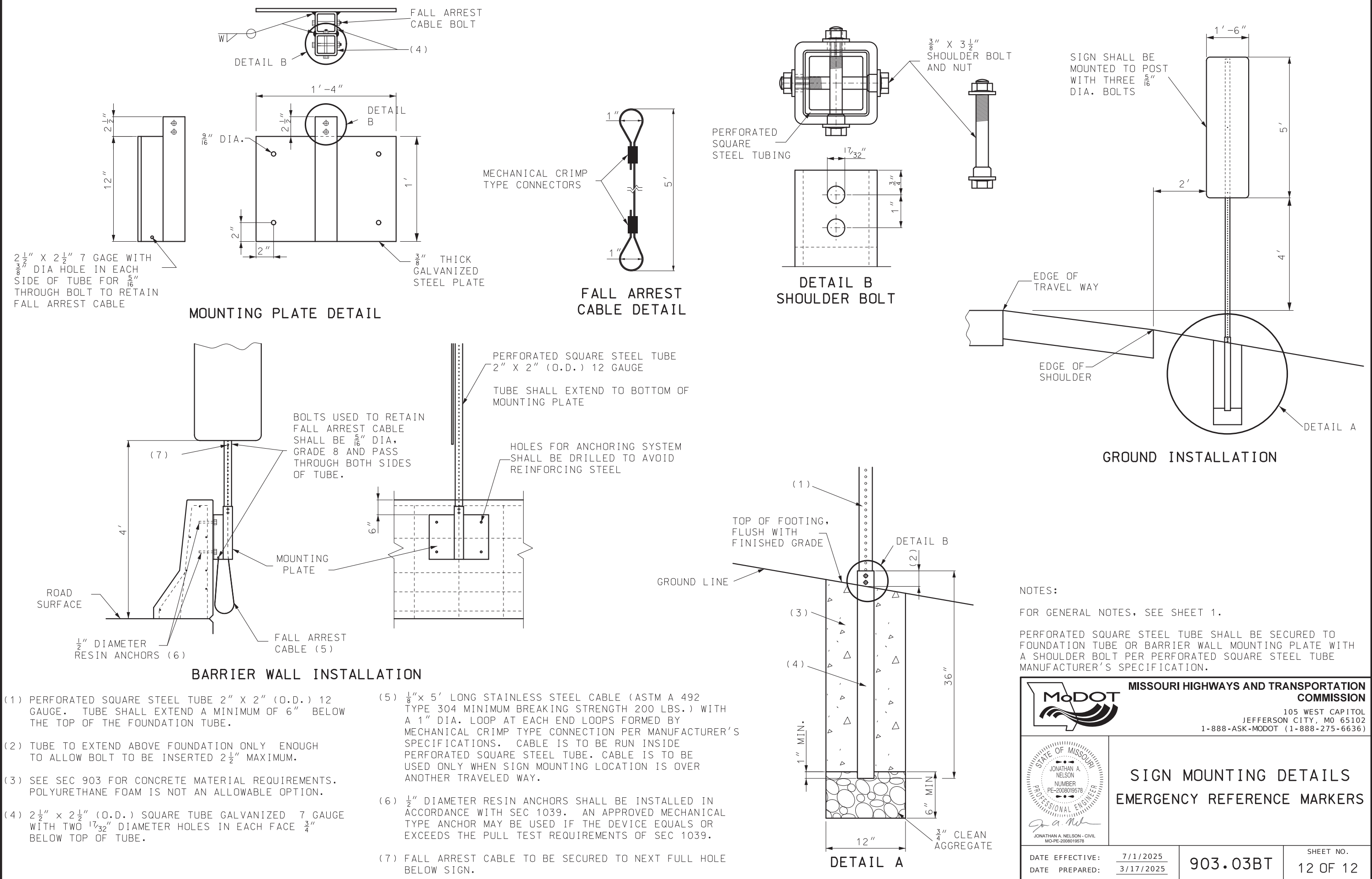
DATE EFFECTIVE: 7/1/2025

DATE PREPARED: 3/17/2025

MOUNTING HEIGHT DETAILS

903.03BT

SHEET NO.
11 OF 12



2 1/2" X 2 1/2" 7 GAGE WITH 1/16" DIA HOLE IN EACH SIDE OF TUBE FOR 5/16" THROUGH BOLT TO RETAIN FALL ARREST CABLE

MOUNTING PLATE DETAIL

FALL ARREST CABLE DETAIL

DETAIL B SHOULDER BOLT

GROUND INSTALLATION

BARRIER WALL INSTALLATION


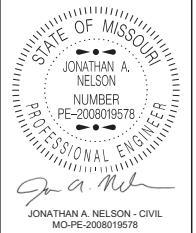
DETAIL A

3/4" CLEAN AGGREGATE

NOTES:

FOR GENERAL NOTES, SEE SHEET 1.

PERFORATED SQUARE STEEL TUBE SHALL BE SECURED TO FOUNDATION TUBE OR BARRIER WALL MOUNTING PLATE WITH A SHOULDER BOLT PER PERFORATED SQUARE STEEL TUBE MANUFACTURER'S SPECIFICATION.

 MISSOURI HIGHWAYS AND TRANSPORTATION COMMISSION 105 WEST CAPITOL JEFFERSON CITY, MO 65102 1-888-ASK-MODOT (1-888-275-6636)	
 JONATHAN A. NELSON - CIVIL MO-PE-2008019578	SIGN MOUNTING DETAILS EMERGENCY REFERENCE MARKERS
DATE EFFECTIVE: 7/1/2025 DATE PREPARED: 3/17/2025	SHEET NO. 903.03BT 12 OF 12