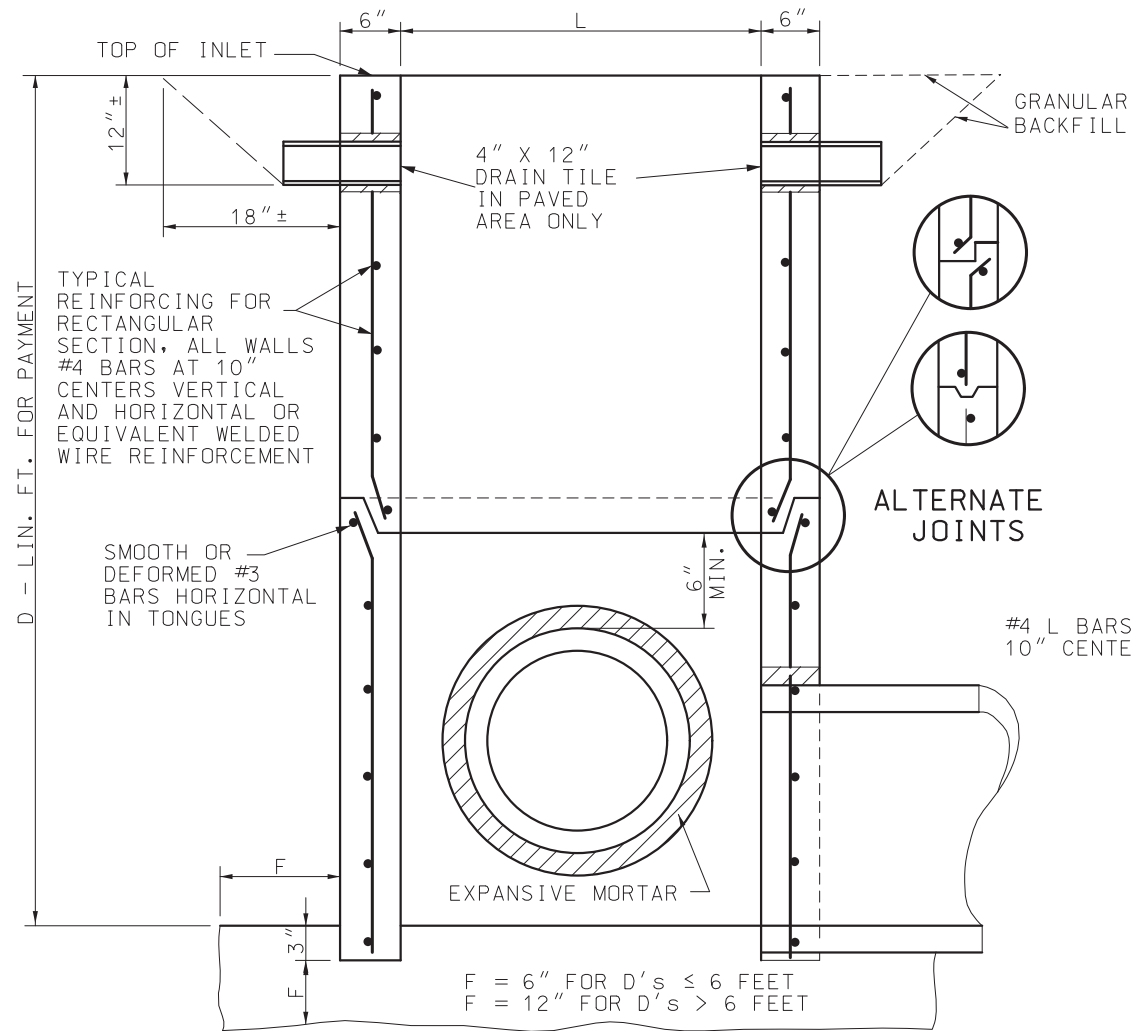
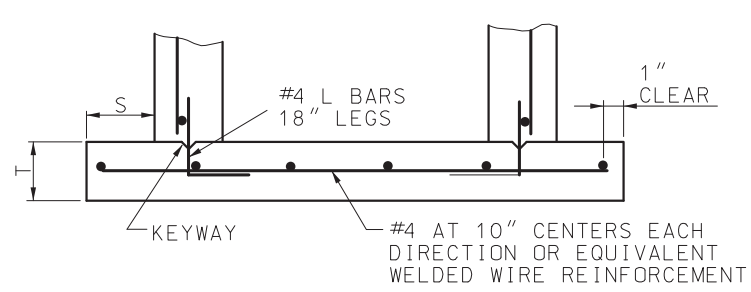


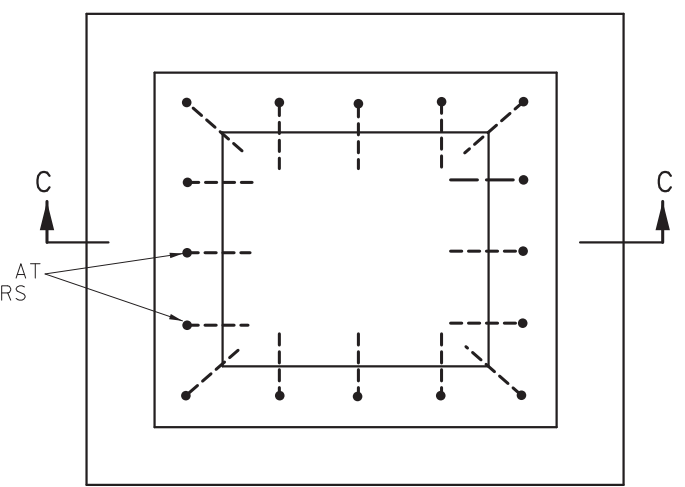
SECTION A-A



SECTION B-B



SECTION C-C



S = 0 FOR D ≤ 6 FEET AND 9"
 FOR D > 6 FEET
 T = 6" FOR D ≤ 6 FEET AND 9"
 FOR D > 6 FEET

FOUNDATION SLAB AND BASE SECTION MAY BE POURED MONOLITHIC OR SEPARATELY WITH A KEYWAY.

PRECAST FOUNDATION SLAB

GENERAL NOTES:

STEPS SHALL BE PLACED AT VERTICAL INTERVALS OF 16" MAXIMUM IN ALL INLETS HAVING A DEPTH OF MORE THAN 4 FEET. STEPS SHALL BEGIN AT AN ELEVATION 6" ABOVE THE TOP OF THE OUTLET PIPE.

STEPS SHALL BE SET LEVEL AND IN VERTICAL ALIGNMENT AND NOT NEARER THAT 3" TO A JOINT.

NO DIRECT PAYMENT WILL BE MADE FOR INLET STEPS.

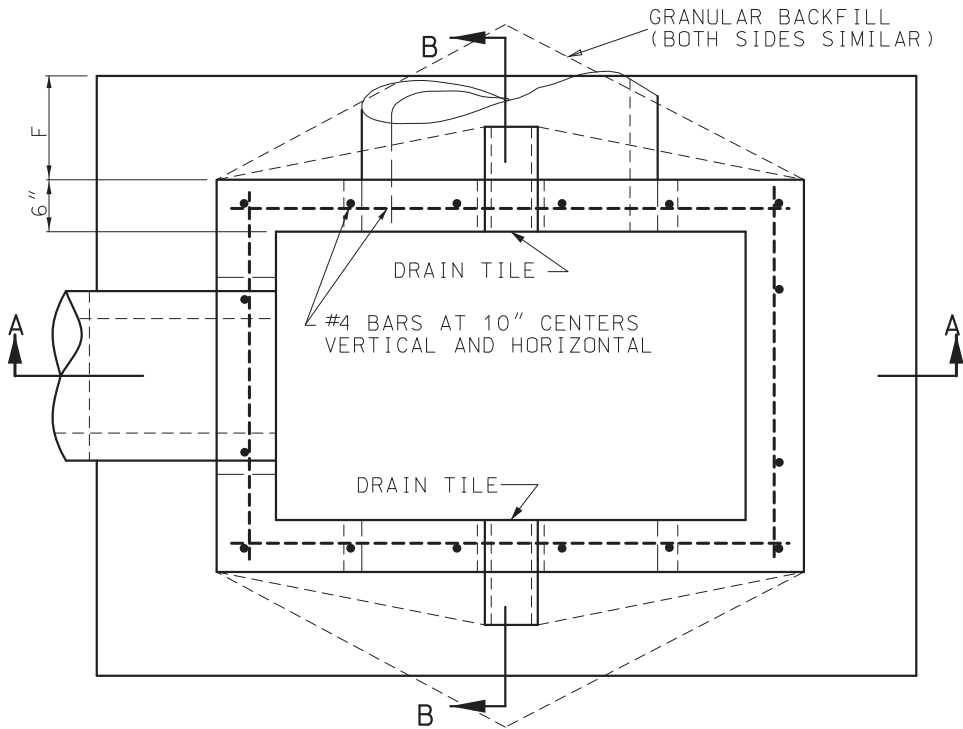
STEPS ARE NOT REQUIRED FOR TYPE D INLETS.

MoDOT MISSOURI HIGHWAYS AND TRANSPORTATION COMMISSION
 105 WEST CAPITOL JEFFERSON CITY, MO 65102
 1-888-ASK-MODOT (1-888-275-6636)

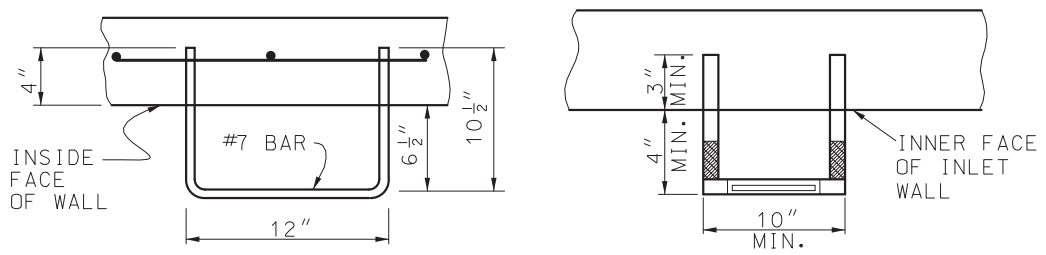
STATE OF MISSOURI
 KENNETH L. VOSS
 NUMBER PE-2002016747
 PROFESSIONAL ENGINEER
 THIS SHEET HAS BEEN SIGNED, SEALED AND DATED ELECTRONICALLY.

PRECAST DROP INLET

DATE EFFECTIVE: 1/1/2025	731.10T	SHEET NO. 1 OF 8
DATE PREPARED: 10/4/2024		

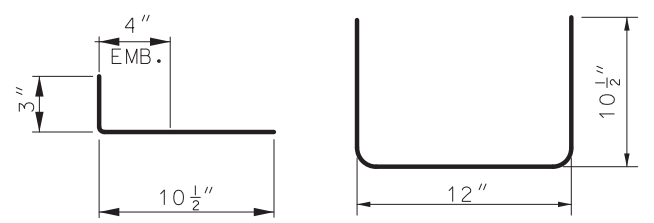


INLET PLAN



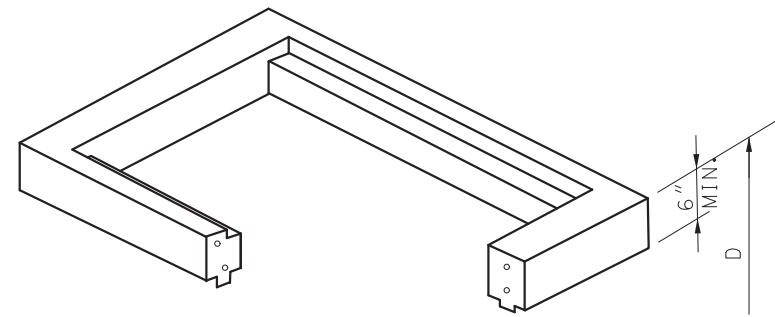
STEPS

STEP INSTALLATION (OTHER THAN STEEL BAR)

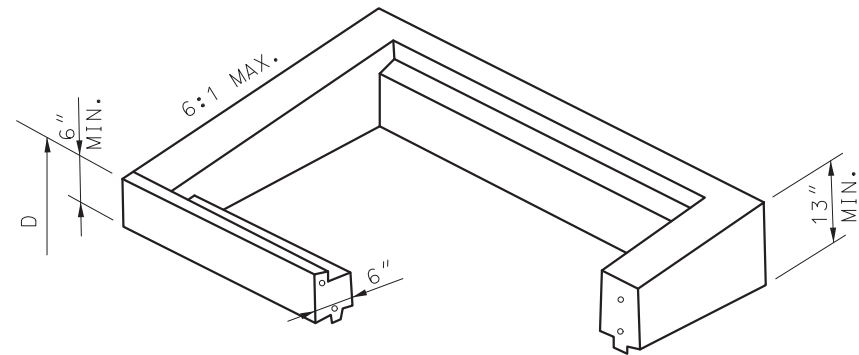


S - BARS

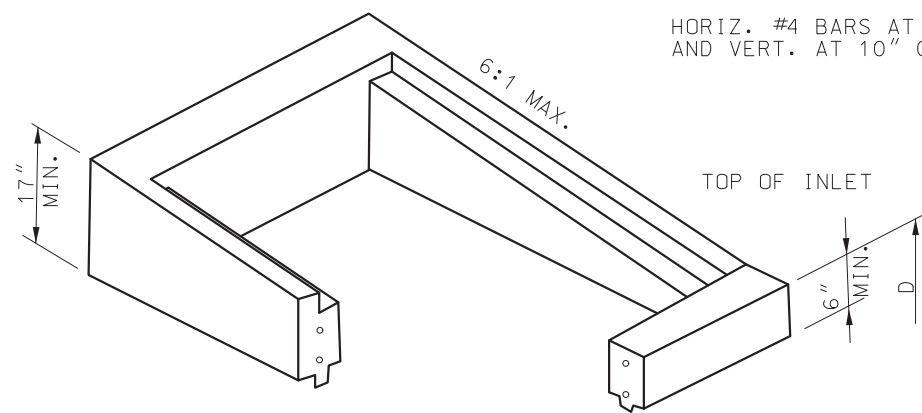
BENDING DIAGRAM STEEL STEP BAR



TYPE S-1



TYPE S-2

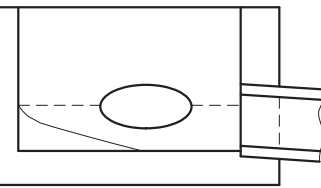
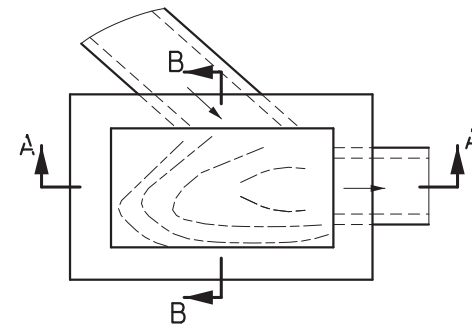


TYPE S-3

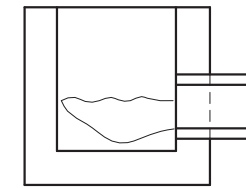
HORIZ. #4 BARS AT 6" CTRS.
AND VERT. AT 10" CTRS.

SEE STANDARD PLAN 614.10 FOR GRATES AND BEARING PLATES. TYPICAL LOCATION DETAILS ARE INDICATED ON SHEETS 7 AND 8 OF 8. TOP SECTIONS MAY BE CAST MONOLITHIC WITH BASE SECTION.

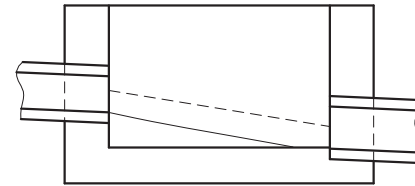
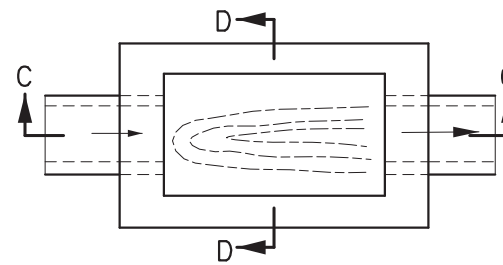
DROP INLET		
WIDTH FT.	LENGTH FT.	TYPE
2	2	A, B, C
4	2	
2	2	D
3	2	E, S-1 S-2, S-3
3	3	
5	2	
5	3	



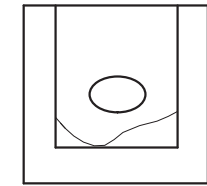
SECTION A-A



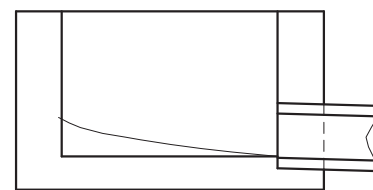
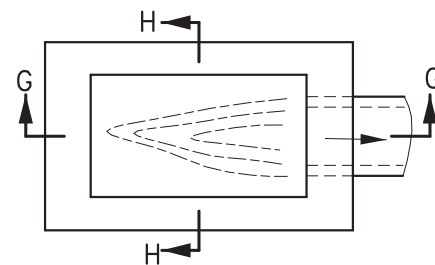
SECTION B-B



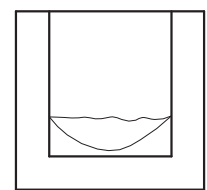
SECTION C-C



SECTION D-D

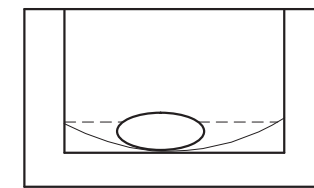
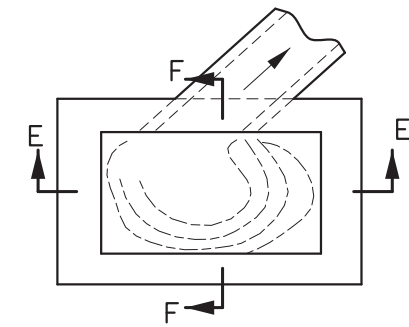


SECTION G-G

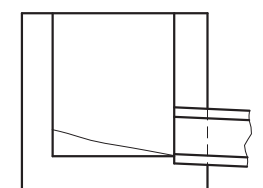


SECTION H-H

TYPICAL INVERTS



SECTION E-E



SECTION F-F

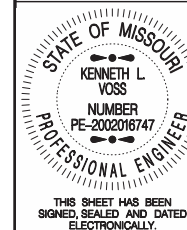
GENERAL NOTES:

THE CONCRETE FOR INVERTS SHALL BE PLACED AFTER COMPLETION OF THE DROP INLET BOX. NO DIRECT PAYMENT WILL BE MADE FOR FURNISHING OR PLACING INVERT CONCRETE.



MISSOURI HIGHWAYS AND TRANSPORTATION COMMISSION

105 WEST CAPITOL
JEFFERSON CITY, MO 65102
1-888-ASK-MODOT (1-888-275-6636)



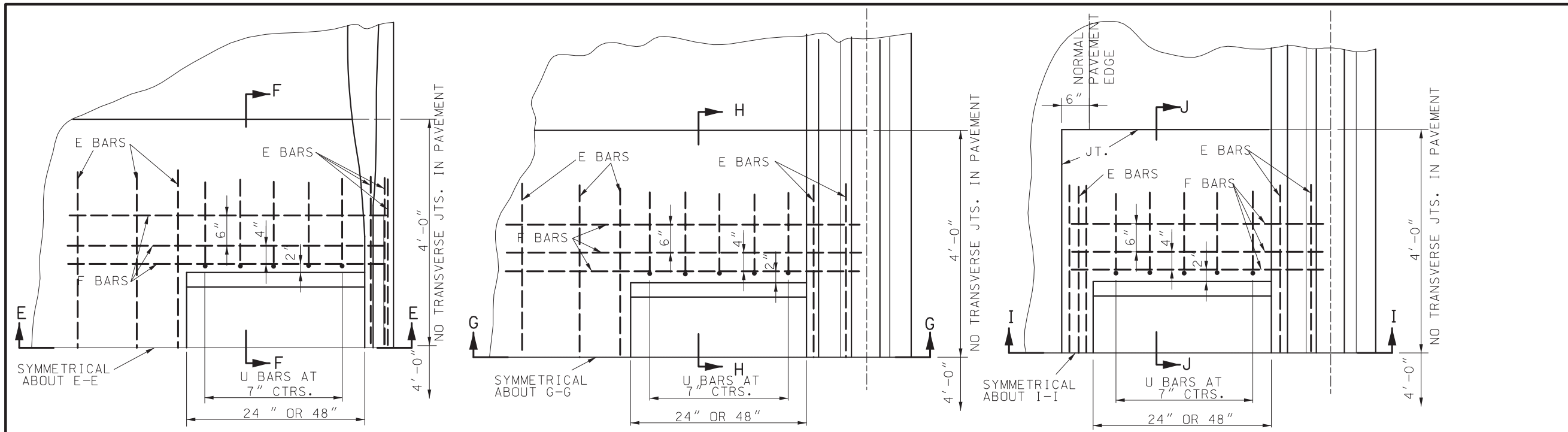
THIS SHEET HAS BEEN SIGNED, SEALED AND DATED ELECTRONICALLY.

PRECAST DROP INLET

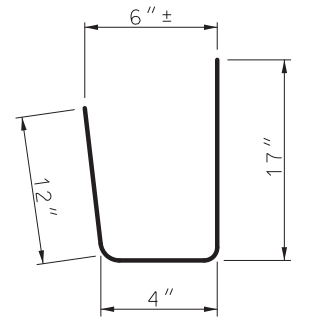
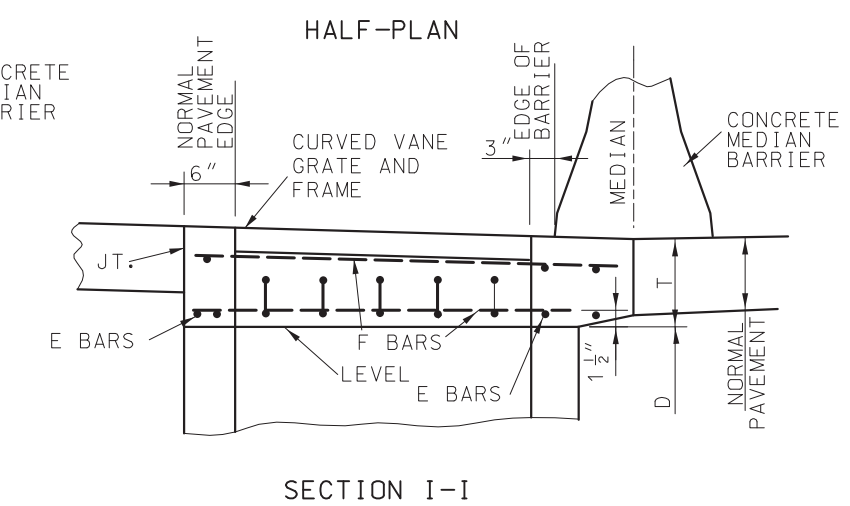
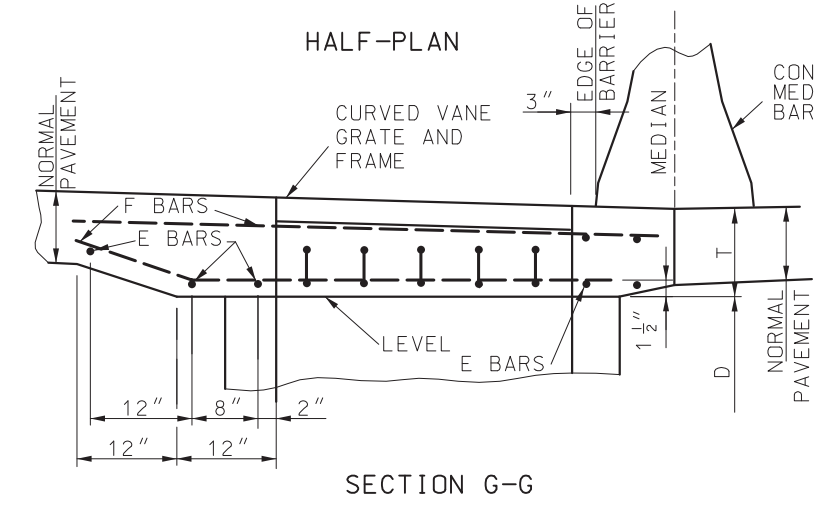
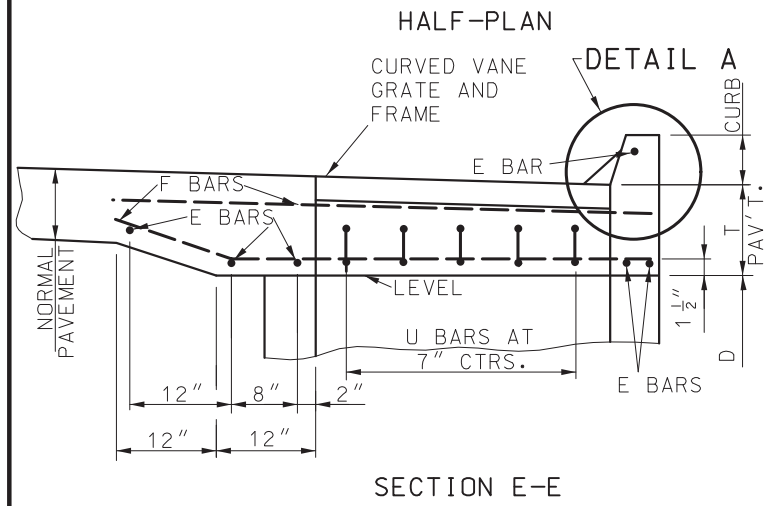
DATE EFFECTIVE: 1/1/2025
DATE PREPARED: 10/4/2024

731.10T

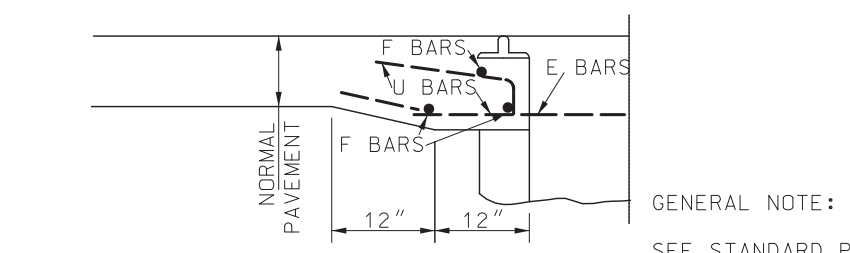
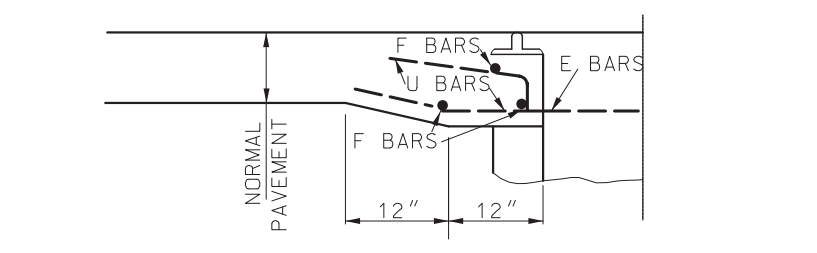
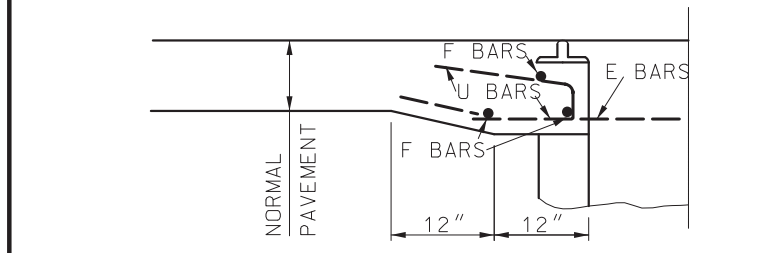
SHEET NO.
2 OF 8



PAVEMENT BAR BILL					
TYPE	WIDTH	LENGTH	MARK	NO.	LENGTH
A	4'	2'	E	6	6'-0"
			F	6	6'-6"
			U	14	2'-9"
B	2'	2'	E	6	6'-0"
			F	6	4'-6"
			U	8	2'-9"
C	4'	2'	E	7	6'-0"
			F	6	7'-0"
			U	14	2'-9"
D	2'	2'	E	7	6'-0"
			F	6	5'-0"
			U	8	2'-9"



BARS E, F, & U.....#4

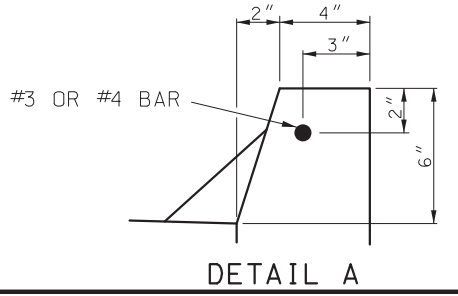


GENERAL NOTE:
SEE STANDARD PLAN 614.11 FOR CURVED VANE GRATE.

TYPE A
INLET ADJACENT TO CURB

TYPE B
DISTANCE BETWEEN BARRIER AND PAVEMENT EDGE GREATER THAN INLET WIDTH

TYPE C
DISTANCE BETWEEN BARRIER AND PAVEMENT EDGE EQUAL TO INLET WIDTH



MISSOURI HIGHWAYS AND TRANSPORTATION COMMISSION

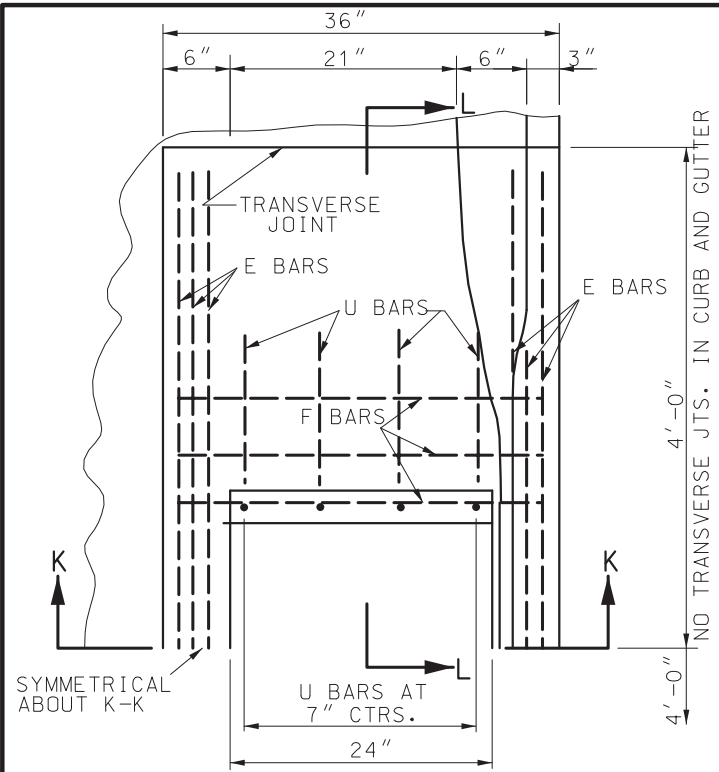
105 WEST CAPITOL
JEFFERSON CITY, MO 65102
1-888-ASK-MODOT (1-888-275-6636)

PRECAST DROP INLET COVERS

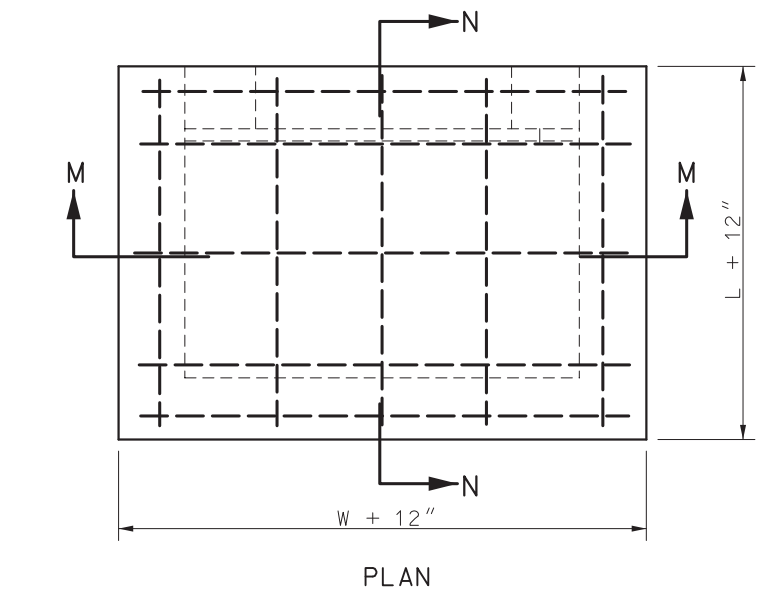
THIS SHEET HAS BEEN SIGNED, SEALED AND DATED ELECTRONICALLY.

DATE EFFECTIVE: 1/1/2025
DATE PREPARED: 10/4/2024

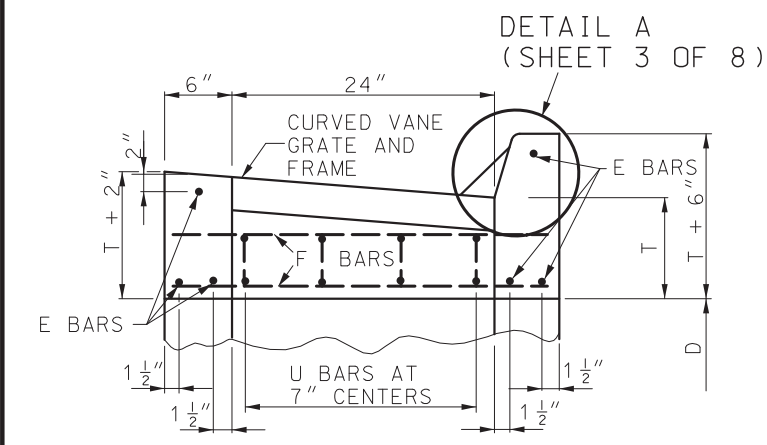
SHEET NO.
3 OF 8



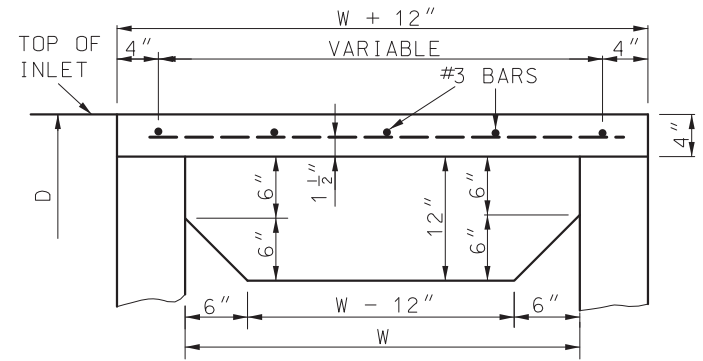
HALF-PLAN



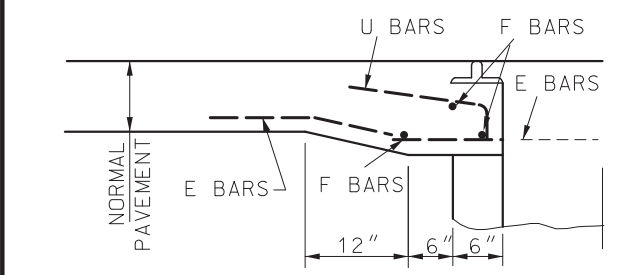
PLAN



SECTION K-K

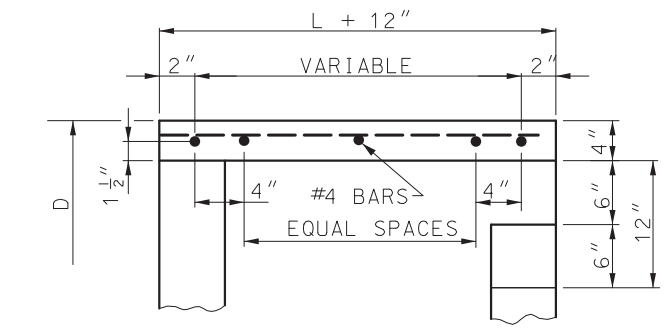


SECTION M-M



HALF SECTION L-L

TYPE D CURB AND GUTTER



SECTION N-N

TYPE E PRECAST SLAB

PAVEMENT THICKNESS	"T" DIMENSION
LESS THAN OR EQUAL TO 11"	11"
12"	12"
13"	13"
GREATER THAN OR EQUAL TO 14"	14"

TYPE E COVER BAR BILL				
WIDTH	LENGTH	BAR SIZE	NO.	LENGTH
3'	2'	#3	5	2'-9"
		#4	5	3'-9"
3'	3'	#3	5	3'-9"
		#4	5	3'-9"
5'	2'	#3	6	2'-9"
		#4	6	5'-9"
5'	3'	#3	6	3'-9"
		#4	7	5'-9"

GENERAL NOTES:

THE SIZE OF THE DROP INLET AND TYPE OF COVER WILL BE SHOWN ON THE PLANS.

THE CONFIGURATION DETAILS SHOWN ARE DESCRIPTIVE ONLY AND MAY BE VARIED TO CONFORM WITH ESTABLISHED MANUFACTURING PROCEDURES.

TOP OF DROP INLET WALL SHALL BE CONSTRUCTED TO THE ELEVATION OF BOTTOM OF SLAB AT THE EDGE OF PAVEMENT OR BOTTOM OF CURB AND GUTTER AT DROP INLET.

WHERE THE DROP INLET IS LOCATED IN AN UNPAVED AREA, THE TOP OF THE DROP INLET WALLS SHALL BE SET TO THE ELEVATION SHOWN ON THE PLANS.

ALL CONCRETE ABOVE THE TAR PAPER SEPARATION JOINT IS TO BE CONSTRUCTED DURING PAVING OPERATIONS OR CURB AND GUTTER CONSTRUCTION, AND WILL BE PAID FOR AS SQUARE YARDS OF CONCRETE PAVEMENT OR LINEAR FEET OF CURB AND GUTTER.

FORMED OR CUT-OUT OPENINGS SHALL BE PROVIDED WHERE PIPE INLETS AND OUTLETS ARE SHOWN ON THE PLANS.

REINFORCING BARS IN PAVEMENT SHALL BE EPOXY COATED AND SECURELY TIED TOGETHER AND FASTENED TO AVOID ANY POSSIBLE DISPLACEMENT DURING THE PLACING OF CONCRETE, REINFORCEMENT SHOWN IS IN ADDITION TO ANY REINFORCEMENT SHOWN FOR CONCRETE PAVEMENT OR CURB AND GUTTER.

JOINTS SHALL BE SEALED IN ACCORDANCE WITH SECTION 726.3.1 OF THE STANDARD SPECIFICATIONS.

THE CONTRACTOR WILL BE PERMITTED TO CAST IN PLACE THE DROP INLETS CALLED FOR IN THE PLANS, TO THE DIMENSIONS REQUIRED FOR PRECAST DROP INLETS.

WELDED WIRE REINFORCEMENT MAY BE IN LIEU OF REINFORCING BARS, THE REINFORCEMENT SHALL NOT BE LESS THAN .23 SQUARE INCHES PER LINEAR FOOT BOTH HORIZONTALLY AND VERTICALLY.

NO DIRECT PAYMENT WILL BE MADE FOR REINFORCING STEEL.

NO DIRECT PAYMENT WILL BE MADE FOR CUTTING PIPE NOR FOR CUTTING OR BENDING REINFORCING STEEL.

THE TOP OF INLET PIPES SHALL NOT BE SET BELOW THE TOP OF THE OUTLET PIPE.


NO DIRECT PAYMENT WILL BE MADE FOR FORMING FOR CURVED VANE GRATES AND FRAMES.

THE REINFORCEMENT SHOWN IS THE MINIMUM REQUIRED. AT THE CONTRACTOR'S OPTION, ADDITIONAL REINFORCEMENT MAY BE USED.

REINFORCING STEEL EDGE DISTANCE WILL BE 1 1/2" UNLESS OTHERWISE SPECIFIED.

NOT MORE THEN TWO LIFT HOLES OR LIFTING INSERTS MAY BE PROVIDED.

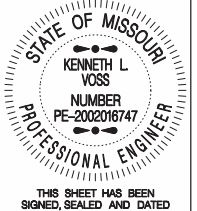
CLASS 3 EXCAVATION WILL BE PAID WITHIN VERTICAL PLANES 18" OUTSIDE OF THE OUTER WALLS OF THE BASE SECTION OF THE DROP INLETS, CLASS 3 EXCAVATION WILL NOT BE PAID FOR OUTSIDE THE FOOTING LIMITS.



MISSOURI HIGHWAYS AND TRANSPORTATION COMMISSION

105 WEST CAPITOL
JEFFERSON CITY, MO 65102
1-888-ASK-MODOT (1-888-275-6636)

PRECAST DROP INLET COVERS



THIS SHEET HAS BEEN SIGNED, SEALED AND DATED ELECTRONICALLY.

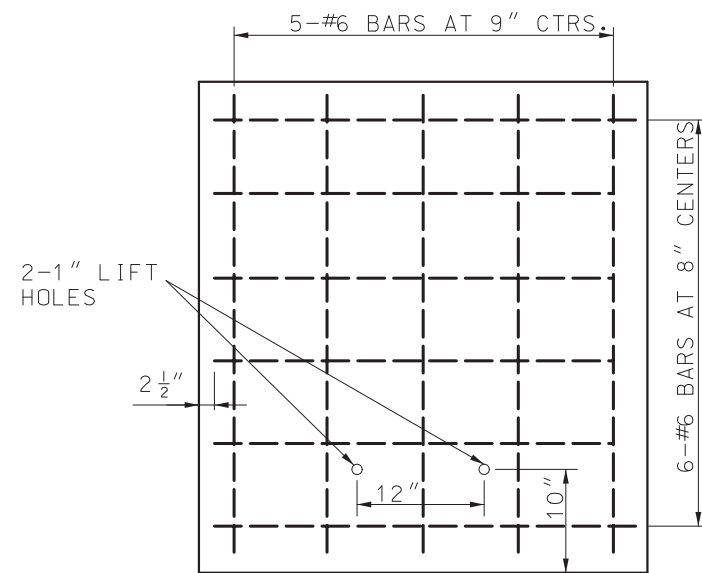
DATE EFFECTIVE: 1/1/2025

DATE PREPARED: 10/4/2024

SHEET NO.

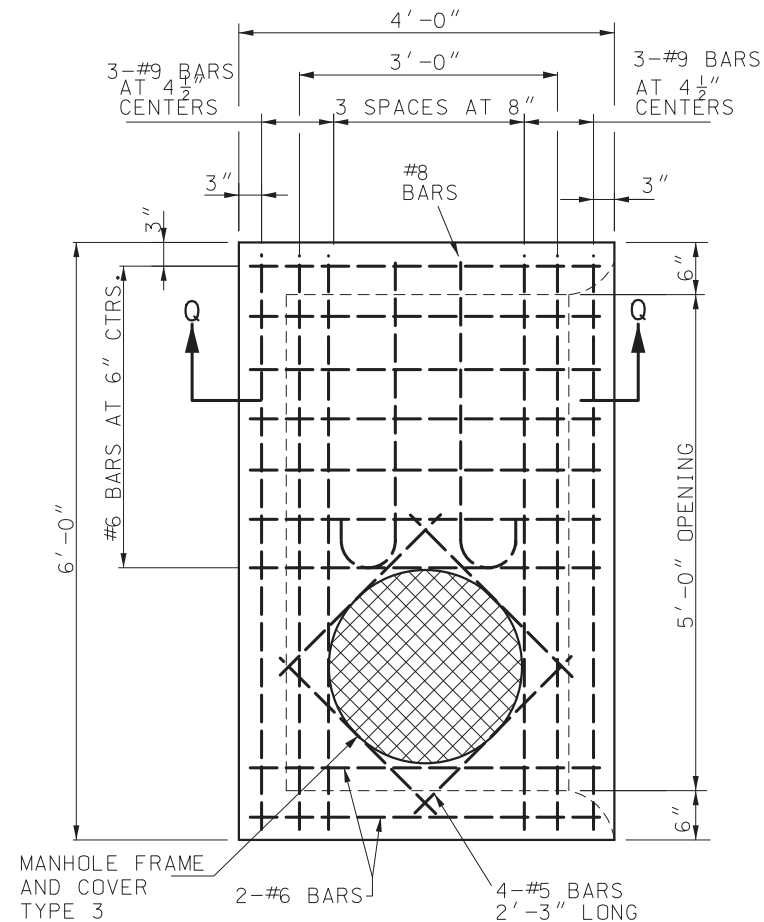
731.10T

4 OF 8

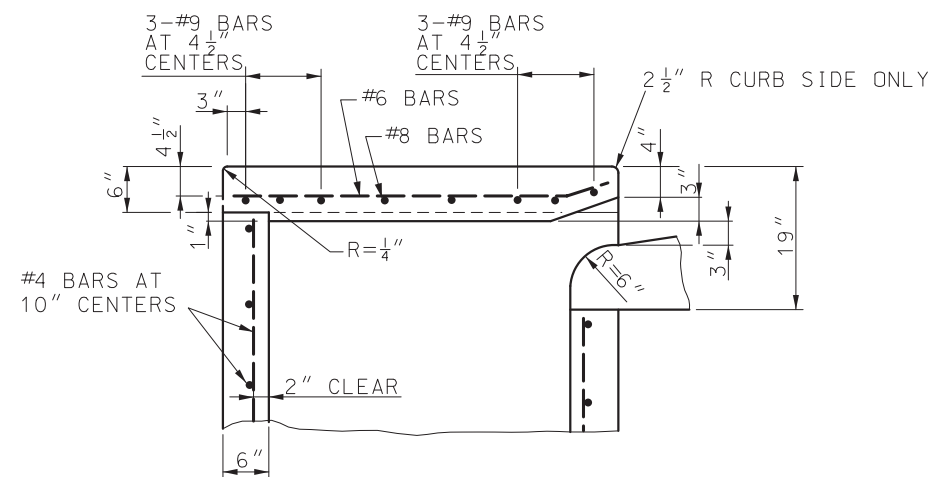


NOTE: REINFORCING FOR LIDS ON UPSTREAM SECTIONS.

LID FOR ADJACENT SECTIONS



PLAN



SECTION Q-Q

OPTIONAL PRECAST CURB INLET
5'-0" OPENING

OTHER DETAILS ARE SAME AS FOR THE 2'-6" OPENING DROP INLET THIS SHEET.

GENERAL NOTES:

NOTES PERTAINING TO TYPE T:

THE LENGTH AND DEPTH OF THE INLET SHALL BE AS SHOWN ON THE PLANS.


WALLS BETWEEN THE ADJACENT SECTIONS SHALL BE SEALED IN ACCORDANCE WITH SECTION 726.3.1 OF THE STANDARD SPECIFICATIONS.

IF DEPTH OF INLET EXCEEDS 6 FEET THE PRECAST UNITS MAY BE FURNISHED IN TWO OR MORE SECTIONS.

IF TWO OR MORE SECTIONS ARE USED, THE TYPE 3 MANHOLE FRAME AND COVER SHALL BE IN THE DOWNSTREAM SECTION ONLY.

IF A 5 FOOT OPENING IS REQUIRED, TWO 2'-6" OPENING SECTIONS OR ONE 5 FOOT OPENING SECTION MAY BE PROVIDED AT THE CONTRACTOR'S OPTION.

SEE SHEET 1 FOR STEP DETAILS AND SHEET 4 FOR GENERAL NOTES.

MISSOURI HIGHWAYS AND TRANSPORTATION COMMISSION

 105 WEST CAPITOL
 JEFFERSON CITY, MO 65102
 1-888-ASK-MODOT (1-888-275-6636)

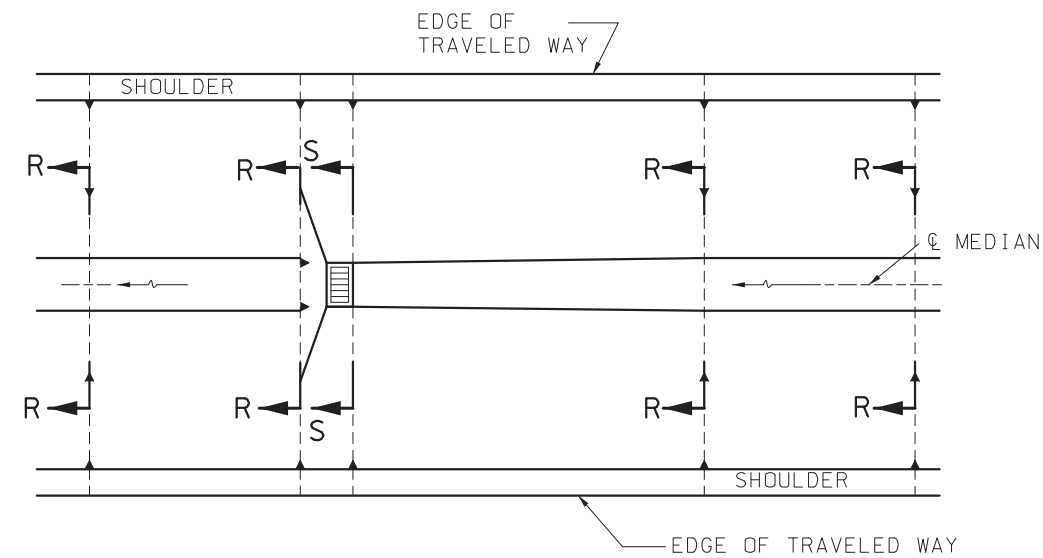
STATE OF MISSOURI
 KENNETH L. VOSS
 NUMBER PE-2002016747
 PROFESSIONAL ENGINEER
 THIS SHEET HAS BEEN SIGNED, SEALED AND DATED ELECTRONICALLY.

PRECAST DROP INLET
CURB INLET - TYPE T

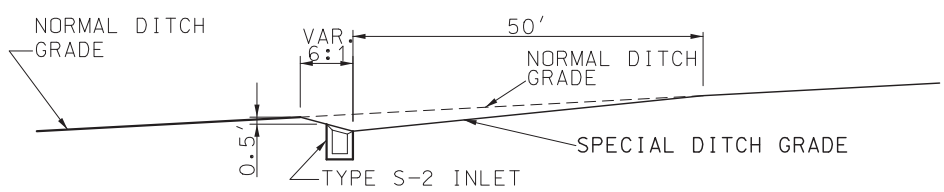
DATE EFFECTIVE: 1/1/2025
 DATE PREPARED: 10/4/2024

731.10T

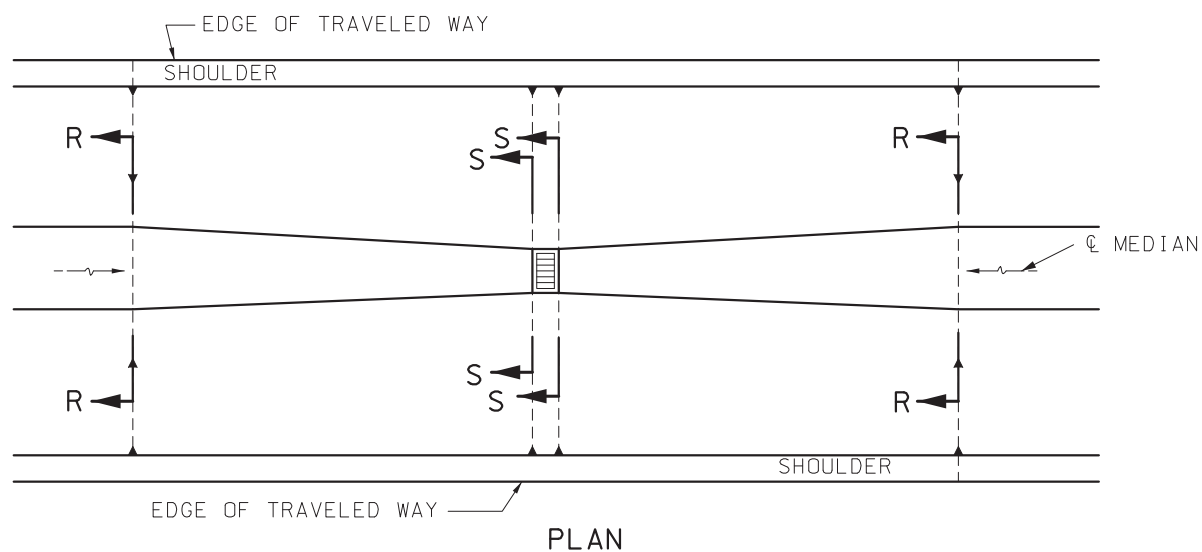
SHEET NO.
6 OF 8



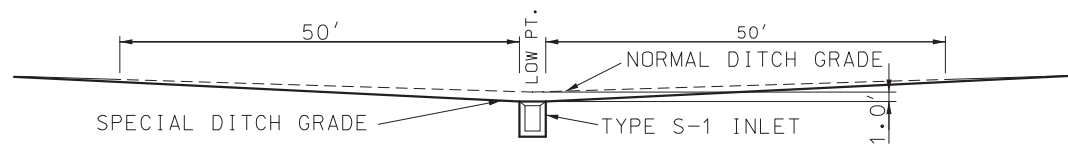
PLAN



SECTION ALONG CENTERLINE OF MEDIAN RELIEF ON GRADE



PLAN



SECTION ALONG CENTERLINE OF MEDIAN RELIEF AT LOW POINT

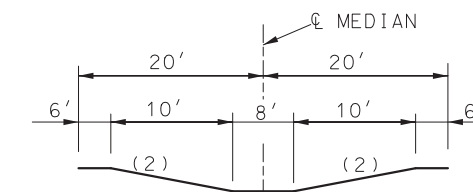
DETAILS FOR MEDIAN RELIEF-60' MEDIAN



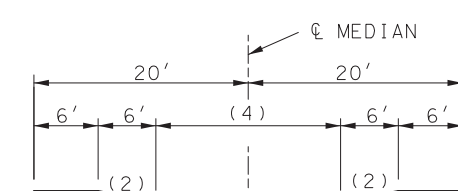
SECTION R-R



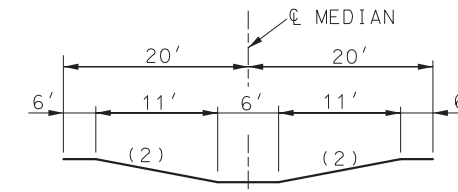
SECTION S-S



SECTION T-T

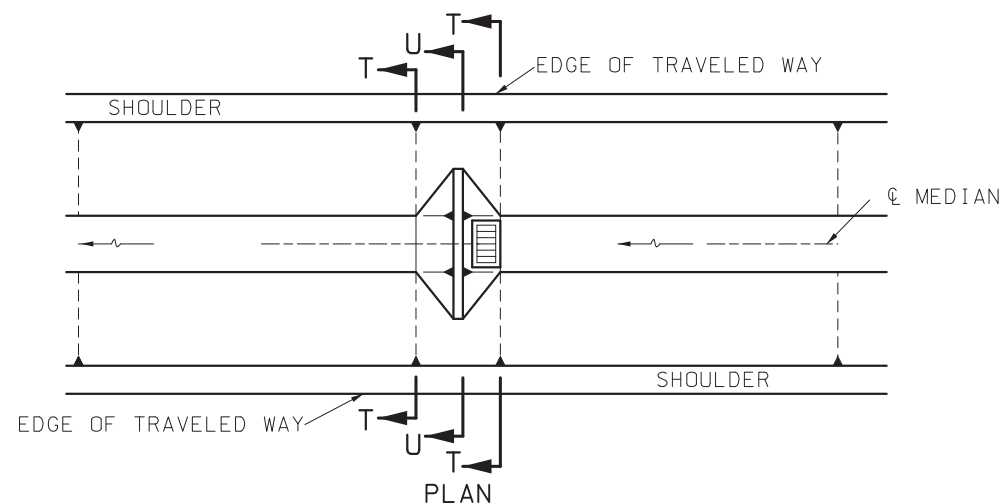


SECTION U-U

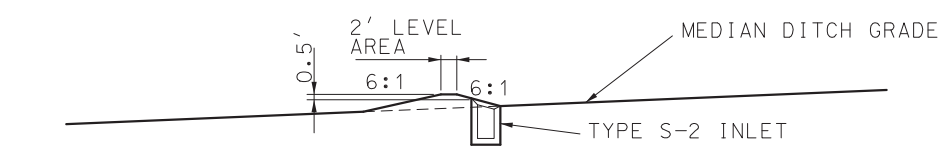


SECTION V-V

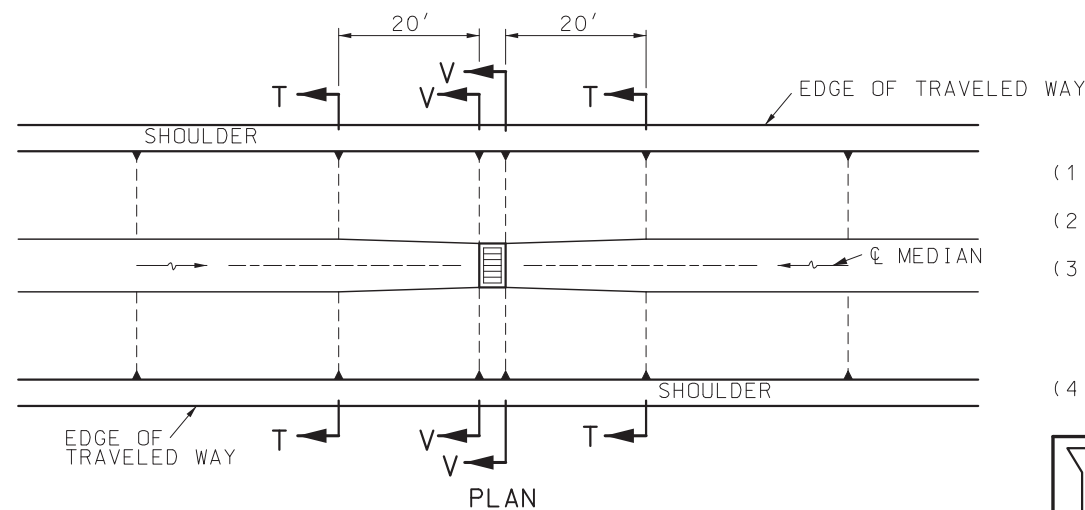
- (1) DITCH WIDTH AS GIVEN ON TYPICAL SECTION.
- (2) DITCH SLOPE AS GIVEN ON TYPICAL SECTION.
- (3) VARY SLOPE TO ACHIEVE MINIMUM 0.5 FT. FREEBOARD ABOVE TOP OF INLET GRATE ON GRADE, OR 1.0 FT. ADDITIONAL DITCH DEPTH BELOW NORMAL DITCH GRADE AT LOW POINT.
- (4) VARY WIDTH TO ACHIEVE MINIMUM 0.5 FEET FREEBOARD ABOVE TOP OF INLET GRATE.



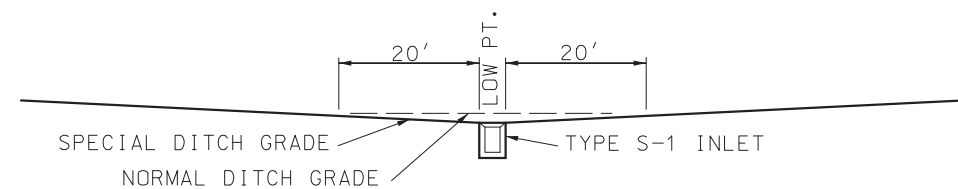
PLAN



SECTION ALONG CENTERLINE OF MEDIAN RELIEF ON GRADE



PLAN



SECTION ALONG CENTERLINE OF MEDIAN RELIEF AT LOW POINT

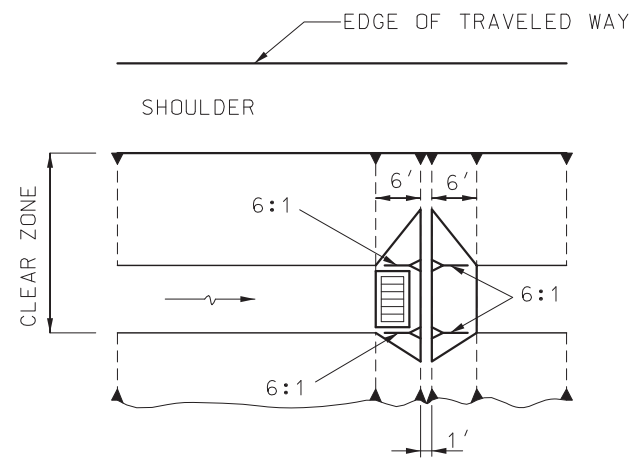
DETAILS FOR MEDIAN RELIEF-40' MEDIAN

MoDOT MISSOURI HIGHWAYS AND TRANSPORTATION COMMISSION
 105 WEST CAPITOL JEFFERSON CITY, MO 65102
 1-888-ASK-MODOT (1-888-275-6636)

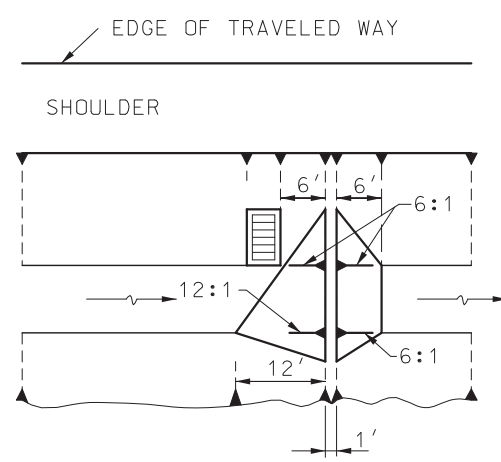
STATE OF MISSOURI
 KENNETH L. VOSS
 NUMBER PE-2002016747
 PROFESSIONAL ENGINEER
 THIS SHEET HAS BEEN SIGNED, SEALED AND DATED ELECTRONICALLY.

PRECAST DROP INLET
 TYPICAL LOCATION DETAILS - TYPE S

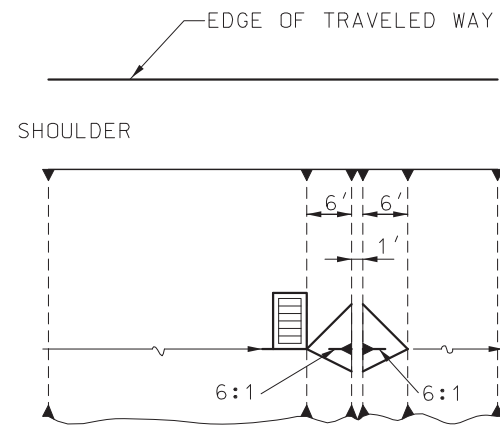
DATE EFFECTIVE: 1/1/2025	731.10T	SHEET NO. 7 OF 8
DATE PREPARED: 10/4/2024		



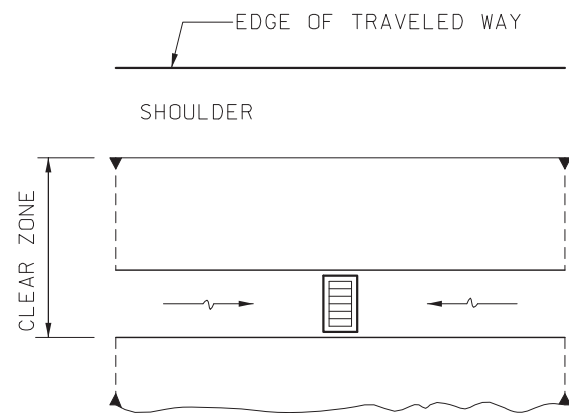
PLAN 1
TYPE S-2 INLET IN ROADWAY DITCH
(FLAT DITCH ON GRADE)



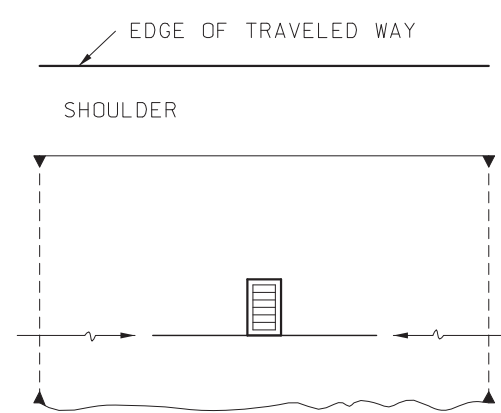
PLAN 2
TYPE S-3 INLET IN ROADWAY DITCH
(FLAT DITCH ON GRADE)



PLAN 3
TYPE S-3 INLET IN ROADWAY DITCH
(V DITCH ON GRADE)



PLAN 4
TYPE S-1 INLET AT LOW POINT
(FLAT DITCH)



PLAN 5
TYPE S-3 INLET AT LOW POINT
(LOW DITCH)

**DETAILS FOR ROADWAY DITCH INLETS
LOCATED WITHIN THE CLEAR ZONE**

GENERAL NOTES:

THIS DRAWING IS FOR GENERAL INFORMATION ONLY. ACTUAL CONSTRUCTION DETAILS SHALL CONFORM TO THOSE SHOWN ON THE DETAIL PLANS.

DETAILS ON THIS SHEET ARE ONLY FOR USE WITH STRUCTURES LOCATED IN THE MEDIAN OR WITHIN THE CLEAR ZONE.

MoDOT MISSOURI HIGHWAYS AND TRANSPORTATION COMMISSION
105 WEST CAPITOL
JEFFERSON CITY, MO 65102
1-888-ASK-MODOT (1-888-275-6636)

STATE OF MISSOURI
KENNETH L. VOSS
NUMBER PE-2002016747
PROFESSIONAL ENGINEER
THIS SHEET HAS BEEN SIGNED, SEALED AND DATED ELECTRONICALLY.

**PRECAST DROP INLET
TYPICAL LOCATION DETAILS - TYPE S**

DATE EFFECTIVE: 1/1/2025
DATE PREPARED: 10/4/2024

731.10T

SHEET NO.
8 OF 8