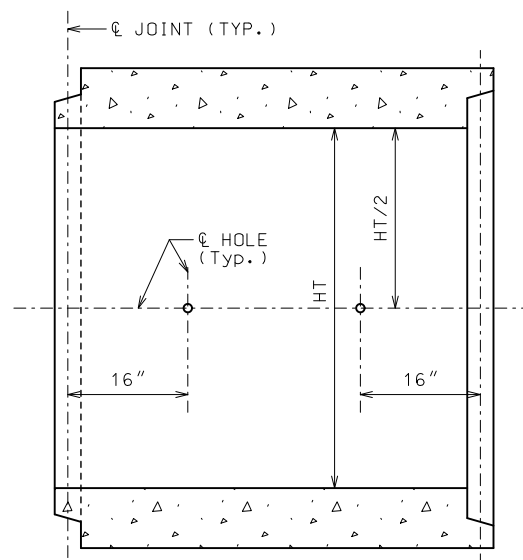
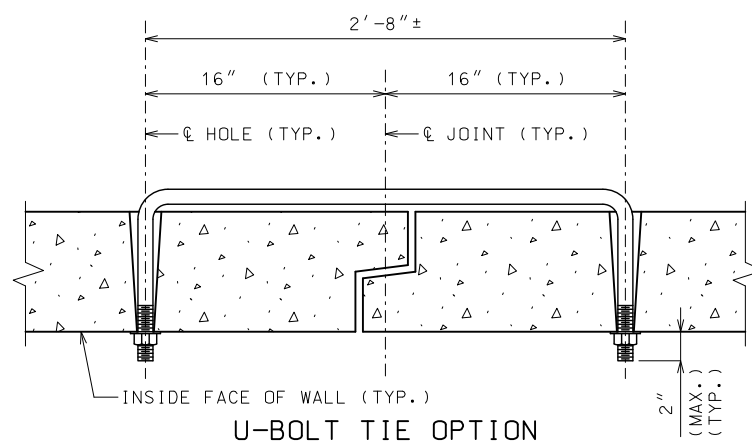


HALF SECTION THRU BARREL

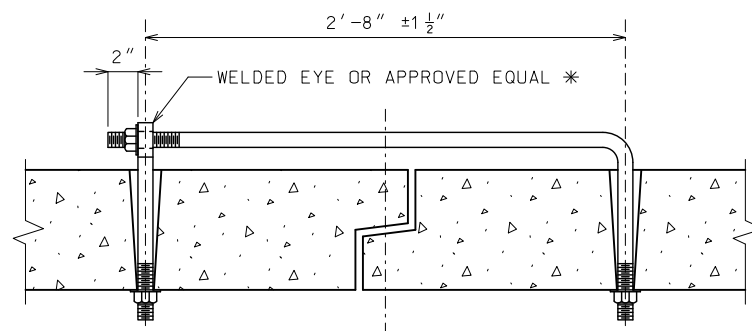


LONGITUDINAL SECTION

PLACEMENT OF HOLES

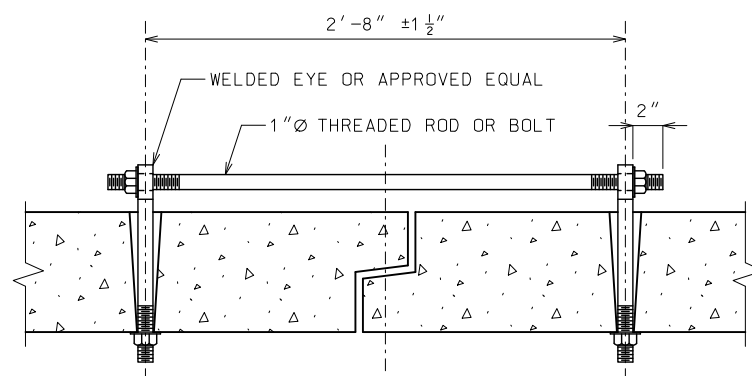


U-BOLT TIE OPTION



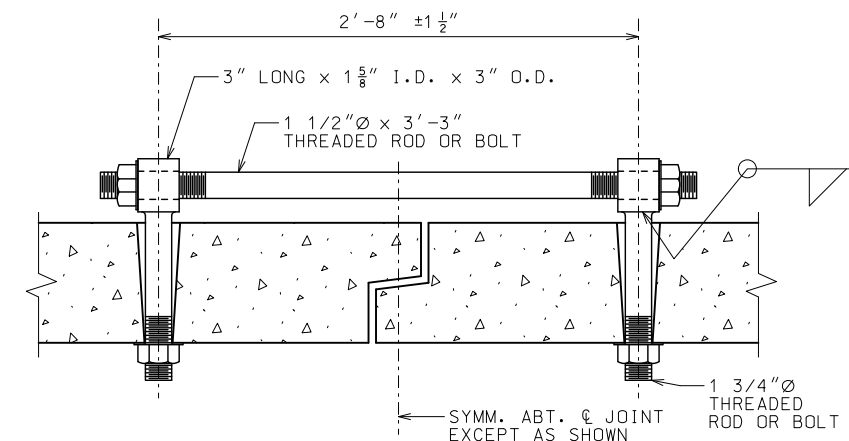
* THE CONNECTIONS SHALL BE PLACED AT DOWNSTREAM END WHEN PLACED INSIDE OF STRUCTURE.

EYE BOLT TIE OPTION



DOUBLE CONNECTION TIE OPTION

REGULAR STRENGTH CONNECTION DETAILS



DOUBLE CONNECTION TIE
EXTRA STRENGTH
CONNECTION DETAILS

GENERAL NOTES:

TIES SHALL BE USED ONLY TO HOLD BOX SECTIONS TOGETHER, NOT FOR PULLING SECTIONS TIGHT.

ALL PARTS OF THE TIE ASSEMBLY EXCEPT FOR ANCHORAGE SHALL BE LOCATED ON THE FILL FACE. ANCHORAGE THAT IS DIFFERENT THAN SHOWN SHALL BE APPROVED BY THE ENGINEER.

TIES SHALL ONLY BE USED FOR CONNECTING ADJACENT PRECAST SECTIONS. TIES ARE NOT TO BE USED TO CONNECT PRECAST TO CAST-IN-PLACE SECTIONS.

HOLES:
HOLES SHALL BE CAST OR DRILLED 16 INCHES FROM CENTERLINE OF JOINT AS SHOWN, UNLESS FORMS ARE SET UP FOR 16-INCH SPACING FROM OUTSIDE OF JOINT.

TAPERED HOLES ARE PERMITTED WHEN PRECAST.

REGULAR STRENGTH CONNECTIONS:
REGULAR STRENGTH CULVERT TIES SHALL BE 1" ⌀ THREADED RODS.

TIE RODS FOR REGULAR STRENGTH CONNECTIONS SHALL BE GALVANIZED IN ACCORDANCE WITH SEC 1081.

EXTRA STRENGTH CONNECTIONS:
THREADED RODS FOR EXTRA STRENGTH CONNECTIONS SHALL BE STAINLESS STEEL IN ACCORDANCE WITH ASTM A193 OR A320.

NUTS FOR EXTRA STRENGTH CONNECTIONS SHALL BE STAINLESS STEEL IN ACCORDANCE WITH ASTM A194 AND OF GRADE EQUIVALENT TO GRADE USED FOR THREADED RODS.

MoDOT MISSOURI HIGHWAYS AND TRANSPORTATION COMMISSION
105 WEST CAPITOL JEFFERSON CITY, MO 65102
1-888-ASK-MODOT (1-888-275-6636)

STATE OF MISSOURI
DENNIS W. HECKMAN
NUMBER PE-27141
PROFESSIONAL ENGINEER

THIS SHEET HAS BEEN SIGNED, SEALED AND DATED ELECTRONICALLY.

**PRECAST CONCRETE
BOX CULVERT TIES**

DATE EFFECTIVE: 07/01/2021	733.00	SHEET NO. 1 OF 1
DATE PREPARED: 5/3/2021		

IF A SEAL IS PRESENT ON THIS SHEET IT HAS BEEN ELECTRONICALLY SEALED AND DATED.