



PROJECT

**BRIDGE**

REBUILD

**Greg Chapman, P.E.**  
Project Director

# Roadmap

- General Overview of Project

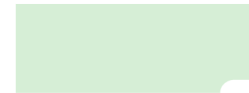
- Project Goals



- Project Budget



- Project Schedule



- DBE and Workforce Goals

- Owner Consultant

# Project Overview



- Freight route of National Significance
  - Wal-Mart and Menards have major distribution centers located on I-44
  - AADT – Over 40% Trucks at some locations
- FedEx uses it for cross-country shipping
- Up to 40,000+ customers a day use this route to reach their destinations

# Project Overview

**A0684**

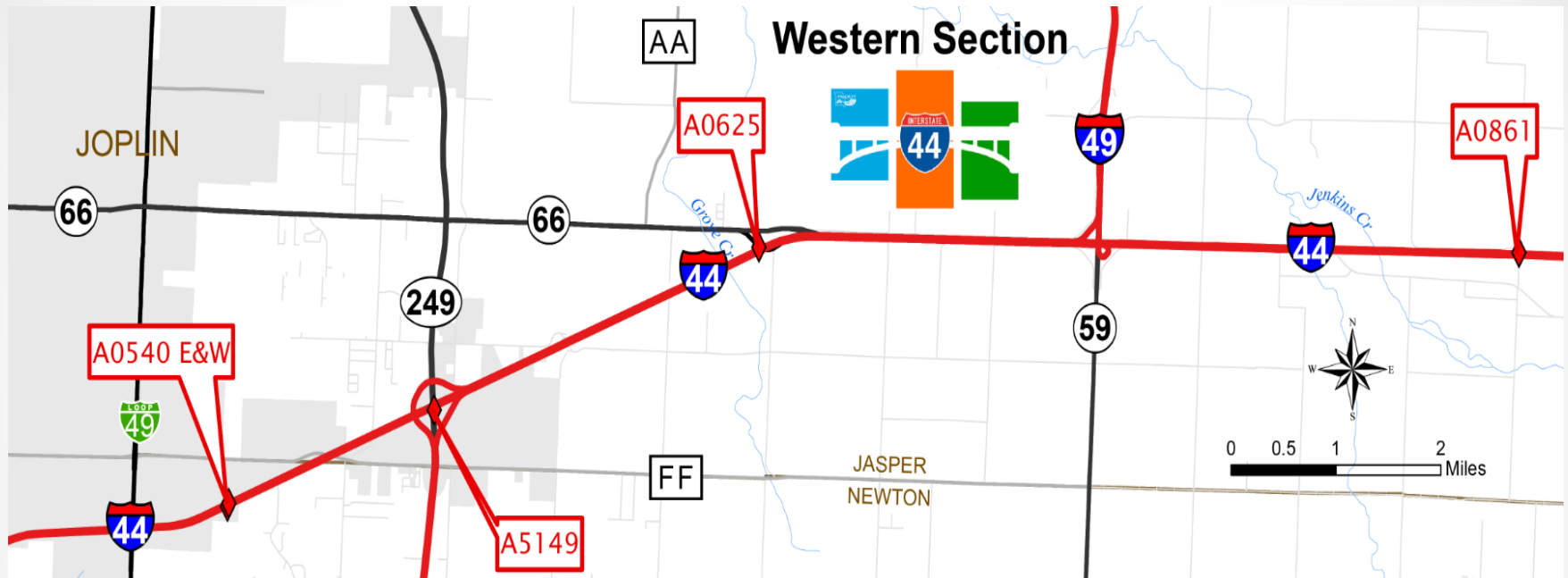


**A0546**



- The bridges on I-44 from Joplin to Springfield were built in the early 60's
- 31 bridges within the project limits have been identified as needing replacement or long term rehabilitation
- 9 of the 31 bridges have critical elements in poor condition at this time and 10 more on the verge - with critical elements rated at a 5
- 15 bridges on I-44 have roadway widths of 30' or less
- Spent almost \$750k in Maintenance costs over the past 3 years

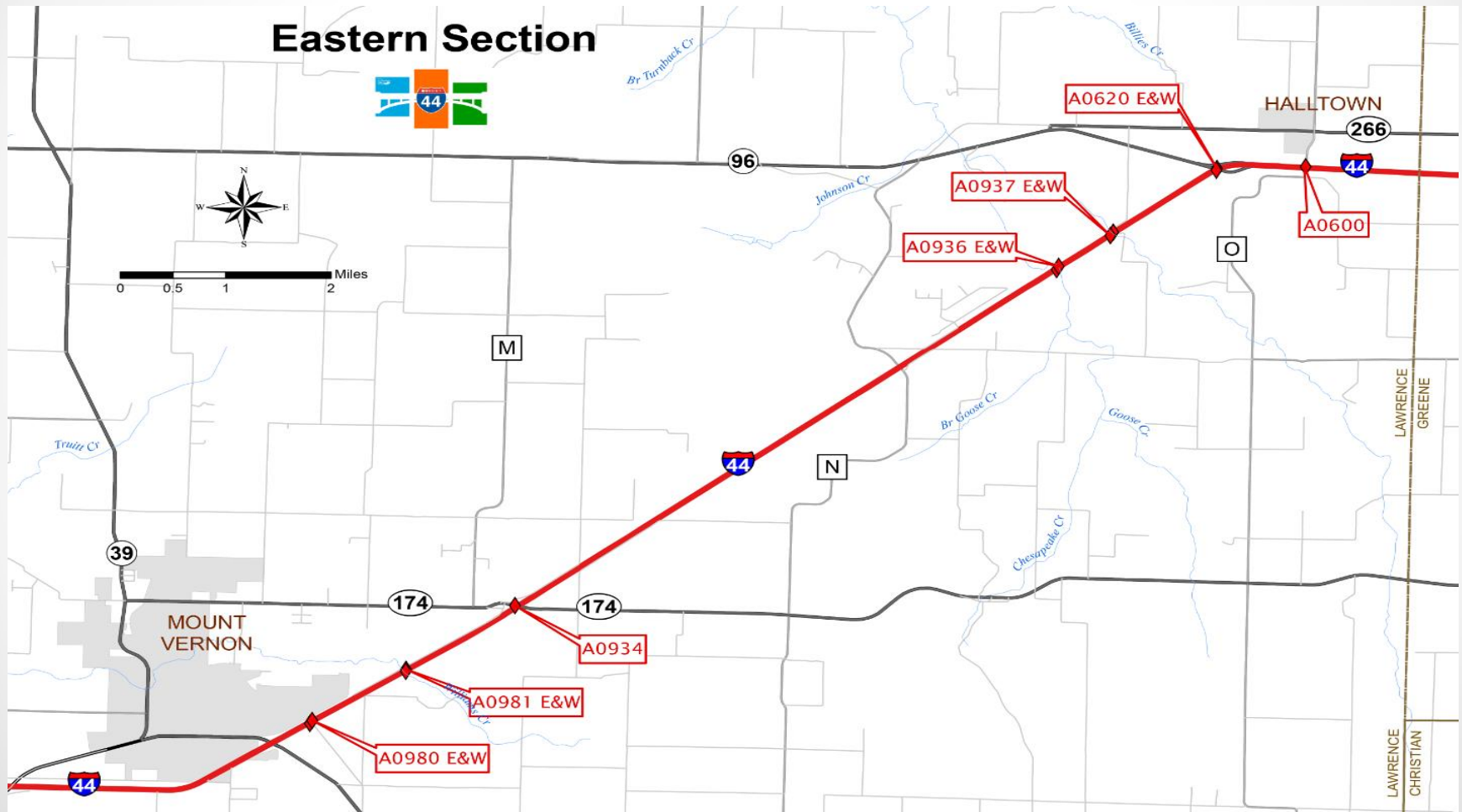
# Project Overview



# Project Overview



# Project Overview



# Project Overview



**A0684**



**A0546**



44



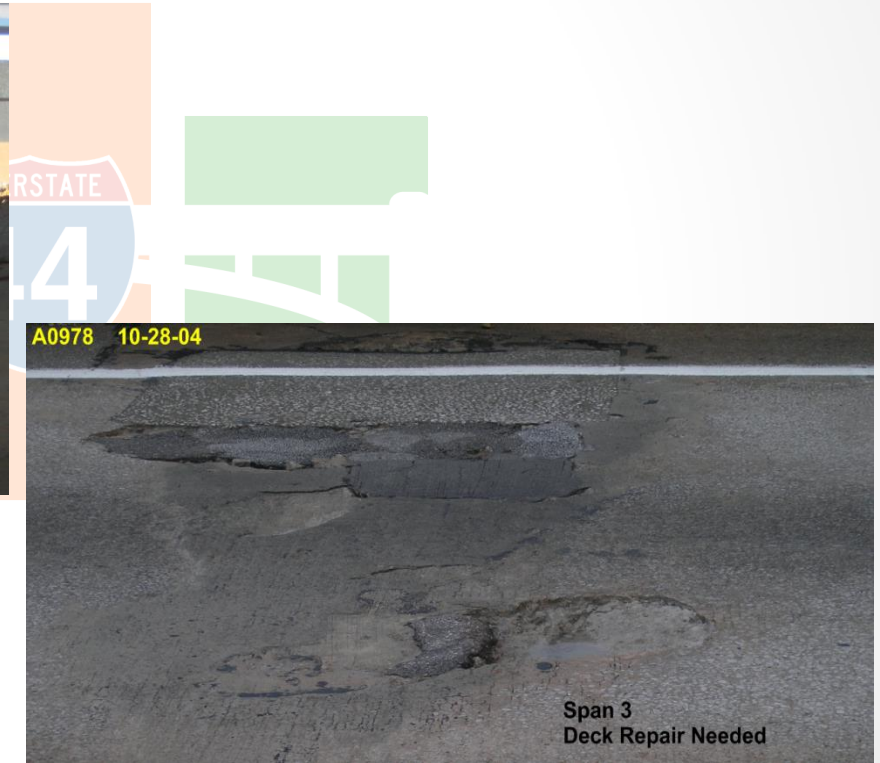
- The bridges on I-44 from Joplin to Springfield were built in the early 60's
- 31 bridges within the project limits have been identified as needing replacement or long term rehabilitation
- 9 of the 31 bridges have critical elements in poor condition at this time and 10 more on the verge - with critical elements rated at a 5
- 15 bridges on I-44 have roadway widths of 30' or less
- Spent almost \$750k in Maintenance costs over the past 3 years



# Project Overview



A0620 I-44 over Mo 96 Lawrence Co 1-3-11  
Edge deterioration over Driving Lanes



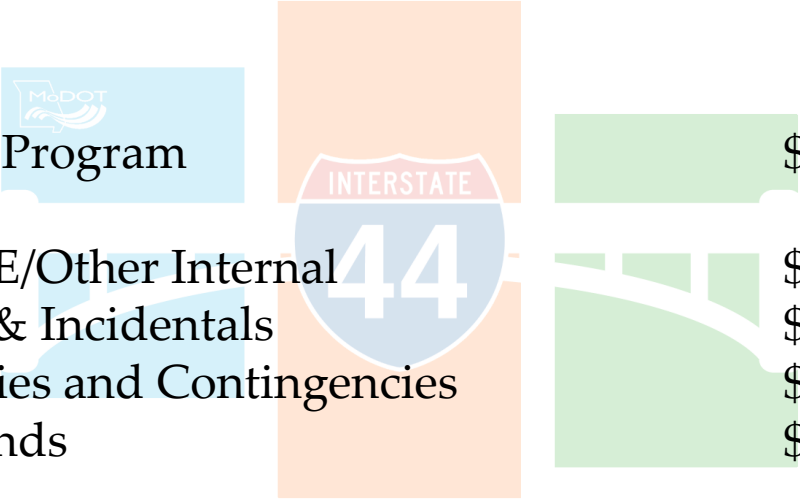
A0978 10-28-04

Span 3  
Deck Repair Needed

# Project Goals

- 1. Deliver the project within the programmed budget of \$36.1 million.**
- 2. Maximize the service life of all identified bridges within the project limits and deliver an end product that improves safety and minimizes future maintenance.**
- 3. Move traffic through the project in a safe, efficient manner using innovative techniques.**
- 4. Deliver the project using a diverse workforce.**
- 5. Complete the project by December 15, 2021.**

# Project Budget



• Total Program	\$36,191,000
• PE/CE/Other Internal	\$ -3,800,000
• R/W & Incidentals	\$ -75,000
• Utilities and Contingencies	\$ -656,000
• Stipends	\$ -560,000
<b>• DB Contract</b>	<b>\$31,100,000</b>

# Project Schedule

**August 13 (Monday), 2018 – Release of Request for Qualifications**

**September 4 (Tuesday), 2018 - Statement of Qualifications Due**

**September 28 (Tuesday), 2018 – Release of Request for Proposals**

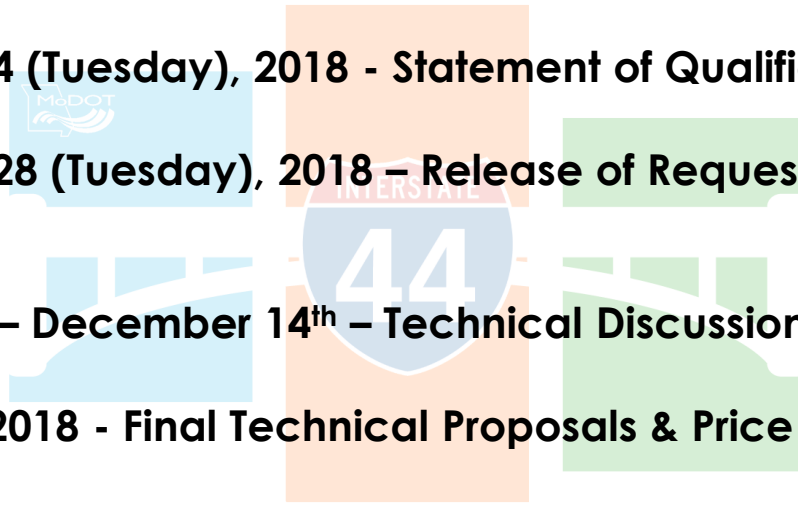
**October 5<sup>th</sup> – December 14<sup>th</sup> – Technical Discussions**

**December 2018 - Final Technical Proposals & Price Allocations due**

**February 6, 2019 - MHTC Award**

**NTP 1 early 2019**

**NTP 2 Spring/Early Summer 2019**

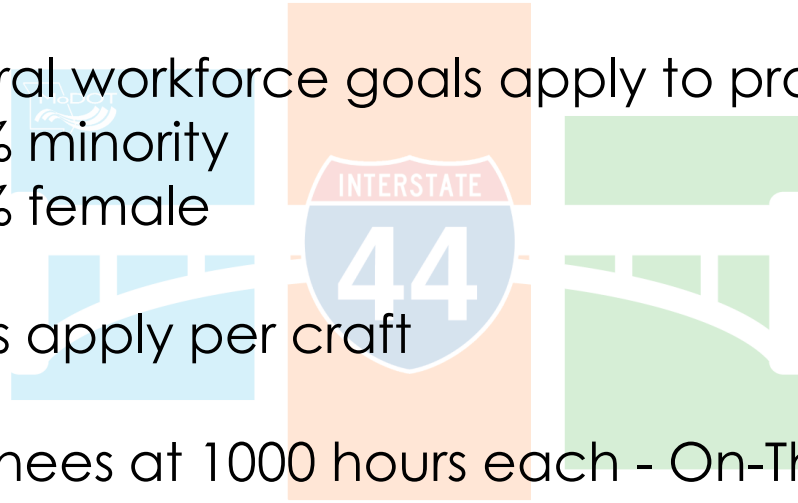


# DBE Goals

- 12% for Construction Activities
- 16% for Professional/Design Activities
- DBE firms must be certified with the Missouri Regional Certification Committee (MRCC)  
[http://www.modot.mo.gov/business/contractor\\_resources/External Civil Rights/DBE\\_program.htm](http://www.modot.mo.gov/business/contractor_resources/External_Civil_Rights/DBE_program.htm)

# Workforce Goals

- Federal workforce goals apply to project
  - 2.3% minority
  - 6.9% female
- Goals apply per craft
- 2 Trainees at 1000 hours each - On-The-Job training Requirement



# Owner Consultant

- CMT working with MoDOT as Owner Engineer
  - Firms not Eligible for Design-Build Project as a result:
    - Crawford, Murphy and Tilly, Inc. (CMT)
    - Burns and McDonnell, Inc.
    - Anderson Engineering, Inc.
    - Terracon, Inc.
    - EFK Moen, LLC
    - Survey Solutions, Inc.
    - Penetradar, Corp.

MoDOT



# Project Contact

Project Director Greg Chapman

[Gregory.r.chapman@modot.mo.gov](mailto:Gregory.r.chapman@modot.mo.gov)

417-621-6504

External Civil Rights Director Lester Woods

[Lester.WoodsJr@modot.mo.gov](mailto:Lester.WoodsJr@modot.mo.gov)

573-751-2859