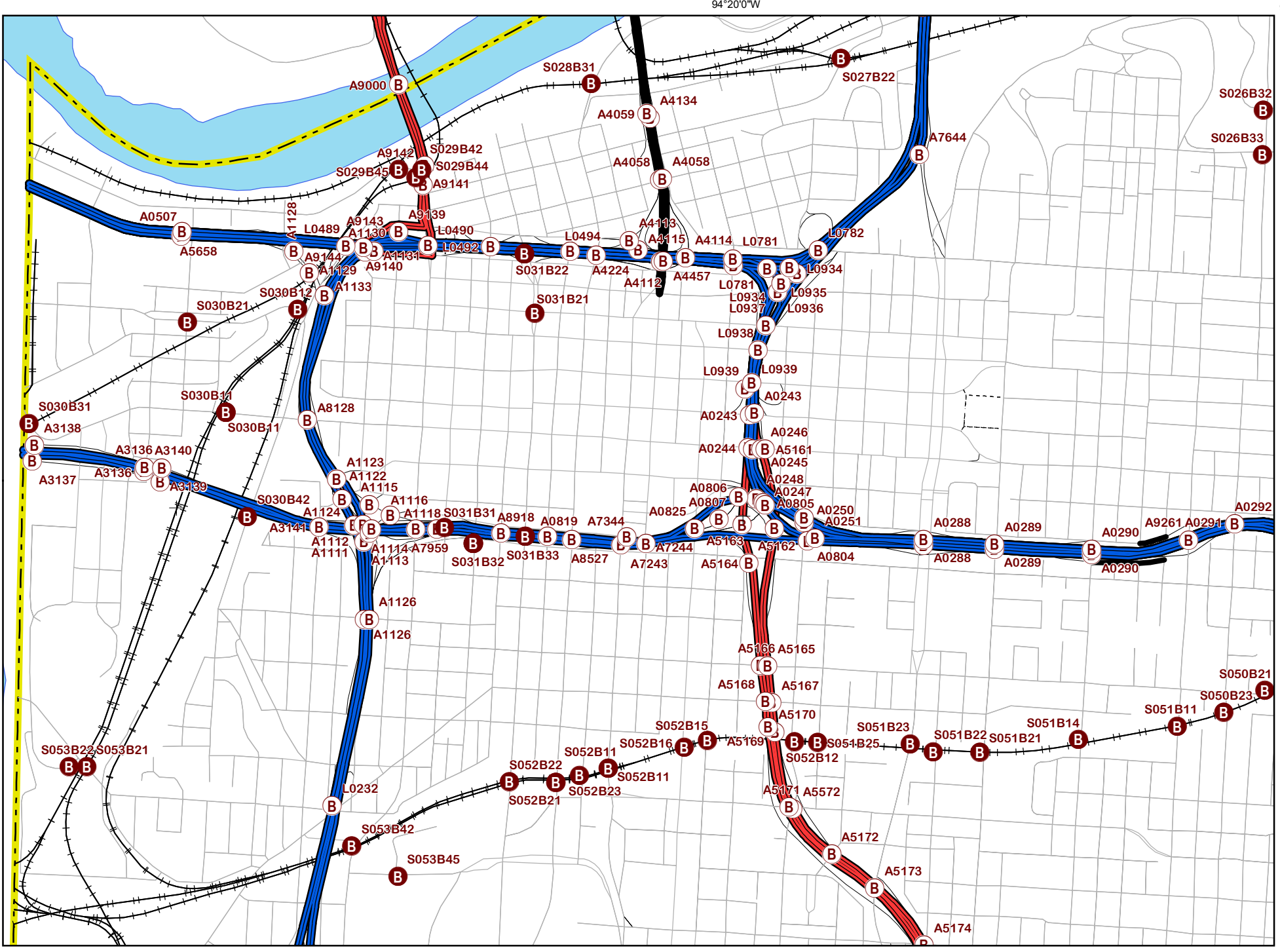
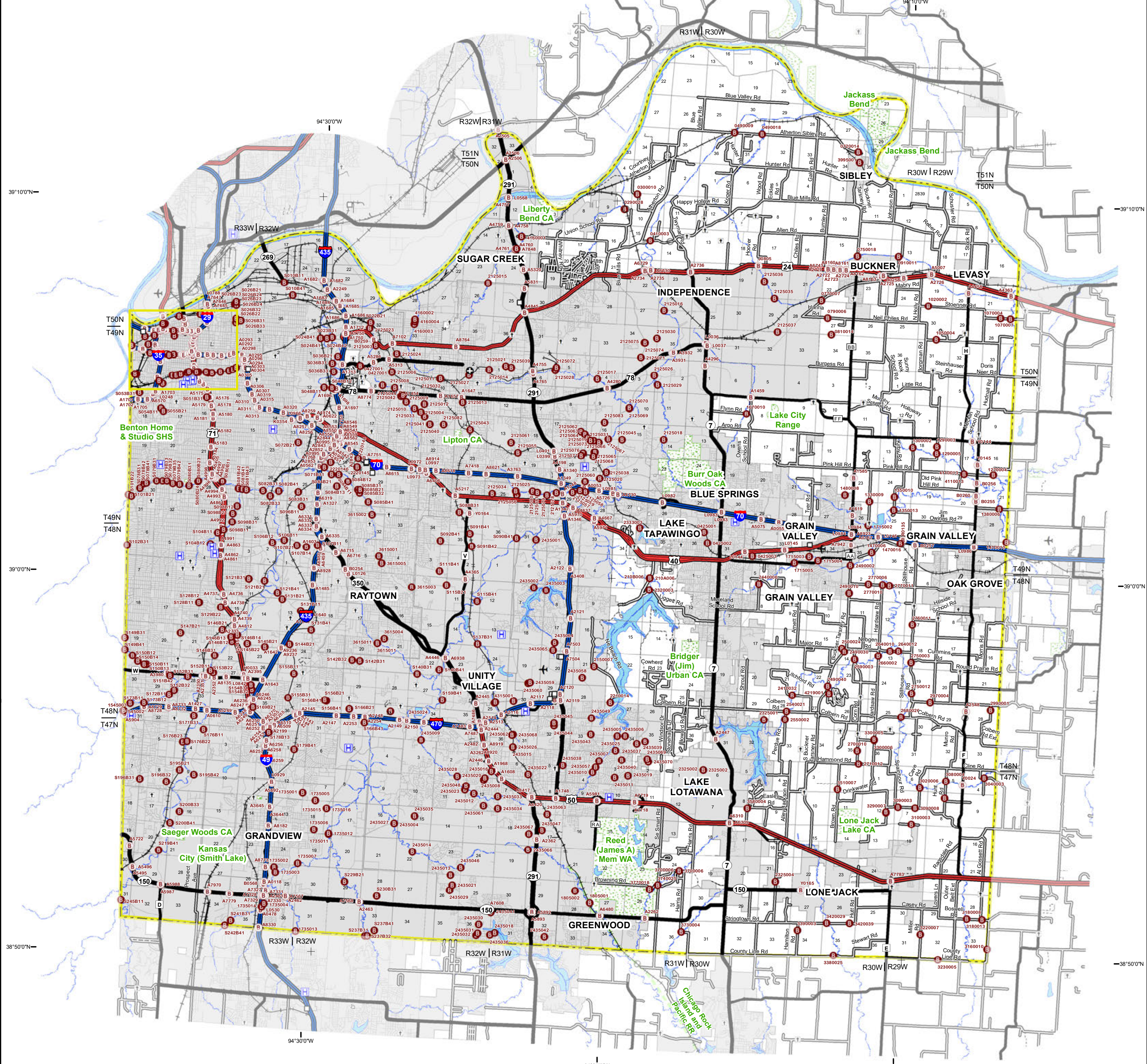


	INTERSTATE		PRIVATE OR OTHER ROAD		AIRPORT
	INTERSTATE LOOP		KATY TRAIL		HOSPITALS
	US HIGHWAY		RAILROAD		CEMETERY
	US HIGHWAY (DIVIDED)		RIVER OR STREAM		OTHER CITIES AND TOWNS
	STATE NUMBERED HIGHWAY		SECTION LINE		MODOT SHED
	STATE LETTERED HIGHWAY		COUNTY BOUNDARY		STATE BRIDGE (STRUCTURE ID)
	COUNTY ROAD - 432 MILES		CITY LIMIT		COUNTY BRIDGE (STRUCTURE ID)
	US LOOP, SPUR OR ALT. RT.		LAKE OR POND		STATE CAPITOL
	CITY STREET		FOREST OR PARK		COUNTY SEAT



Approved by:

Name: \_\_\_\_\_

Title: \_\_\_\_\_

Date: \_\_\_\_\_

**GENERAL HIGHWAY MAP**  
**JACKSON COUNTY**

Prepared by MoDOT  
Transportation Planning Division

County No. 48  
District KC

Scale 0 1 2 3 4 Miles

Revised - July 2024

