



PLANNING FOR THE
FUTURE



I-70 PLANNING AND ENVIRONMENTAL LINKAGES (I-70 PEL) STUDY

Technical Advisory Group Meeting

AUGUST 17, 2017

WELCOME



WHERE ARE WE?

- 🌅 Public Engagement
- 🌅 Purpose and Need/Goals
- 🌅 Broad Range of Alternatives
- 🌅 What's Next?

PUBLIC ENGAGEMENT



Website



www.EnvisionI70.com

ENVISION I-70

ABOUT PUBLIC MEETINGS WHO IS INVOLVED? CONTACT US

PLANNING FOR THE FUTURE

Welcome to the project website for the I-70 Regional Needs Assessment and Strategies Development Study, which will be developed as a Planning and Environmental Linkages (PEL) Study.

ENVISION I-70

The Missouri Department of Transportation (MoDOT), in collaboration with their regional planning partners, East-West Gateway Council of Governments (EWGCOG) and Metro has embarked on a unique endeavor to develop a transportation vision of the I-70 corridor. The study area is from just west of the I-70/I-64 interchange in Wentzville and continues through the New Mississippi River Bridge complex to the end of the express lanes in downtown St. Louis City. The study area is densely developed with a mix of residential, commercial, and industrial land uses. The study is being managed by MoDOT and is being closely coordinated with EWGCOG and Metro and is drawing on past regional transportation plans.

Home : About : Public Meetings : Who is Involved? : Contact Us

©2017 Missouri Department of Transportation

Digital



Facebook

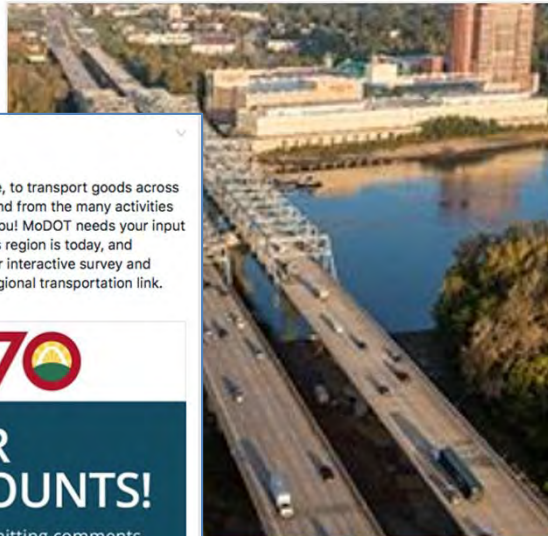


MoDOT - St. Louis

May 16 · 🌐

Don't wait to share your thoughts! MoDOT, Metro and the East-West Gateway Council of Governments have initiated a study to develop a strategic plan for the future of the I-70 corridor. Spend 10 minutes taking our interactive survey before the survey closes on May 22.

<http://www.envision70.com>



MoDOT - St. Louis

March 17 · 🌐

Whether you use I-70 for your daily commute, to transport goods across the country, to reach school, or to travel to and from the many activities St. Louis has to offer, we want to hear from you! MoDOT needs your input as we take a look at what I-70 in the St. Louis region is today, and envision what it can be in the future. Take our interactive survey and share your point of view about this critical regional transportation link. <http://www.envision70.com/>



YOUR OPINION COUNTS!

Tell us what you think by submitting comments, feedback and make your voice heard.

www.Envisioni70.com



Like Comment Share



East-West Gateway Council of Governments

March 13 · 🌐

Envision I-70 with the Missouri Department of Transportation. Your point of view is important to MoDOT as it plans the I-70 corridor, as part of the I-70 Planning and Environmental (PEL) Study. You are encouraged to attend a public meeting to 7 p.m., Thursday, March 30, 2017, at the Normandy Golf on 7700 Natural Bridge Road, in Normandy, Mo., 63121. An interactive survey is also available to you, and can be found at www.Envisioni70.com.



Envision I-70 - Planning Future

Welcome to the project website for Needs Assessment and Strategies (PEL) Study, which will be developed as an Environmental Linkages (PEL) Study

MoDOT surveying drivers to determine future of I-70



Mar 21, 2017

By Alexis Zotos, Reporter
KMOV

ST. CHARLES (KMOV.com) – Each and every day there are up to 95,000 drivers on Interstate 70 between Wentzville and St. Louis, and the Missouri Department of Transportation wants to hear from those drivers on the future of the interstate.

"It's time we take a look at the entire stretch through St. Charles County to see if there's some things we can do to make it more attractive, easier for people to get on and off, and will stimulate economic development as well," explained Steve Ehlmann, County Executive for St. Charles County.

But MoDot is looking at the entire 40-mile stretch of I-70 from Wentzville to downtown. The Envision I-70 survey is online now and MoDOT is asking everyone to fill it out.

With five simple questions, it takes a look at not only the problems drivers have with the interstate, but also how they travel, and priorities for improvements.

They are looking at everything from congestion, to high-risk crash spots, to adding overpasses.

Right now, MoDOT admits there is no funding for any potential projects, but they want to be ready for the future.

Interstate 70 study to provide vision for 40-mile corridor

midriversnewsmagazine.com/2017/04/04/65167/interstate-70-study-to-provide-vision-for-40-mile-corridor

Its unveiling was modest – a few people along with local public transportation officials gathered in the Normandy City Hall on March 30, viewing charts and maps on which a few posted sticky notes with written comments.

But this quiet first public meeting on the restart of the Interstate 70 corridor belies its significance. Over the next year, St. Charles and St. Louis county municipal and county government officials and the area's three major transportation agencies will be developing what some say is a vision for the future of one of the area's major transportation routes.

The Envision I-70 Planning and Environmental Linkages Study is expected to look at a variety of transportation, economic, environmental and safety issues along a 40-mile long, half-mile wide corridor. The corridor extends from Wentzville to downtown St. Louis.



Along for the Ride: What's next for Interstate 70 in the St. Louis area? | Along for the Ride | stltoday.com

3/18/17, 3:56 PM



Along for the Ride: What's next for Interstate 70 in the St. Louis area?

Public Meeting



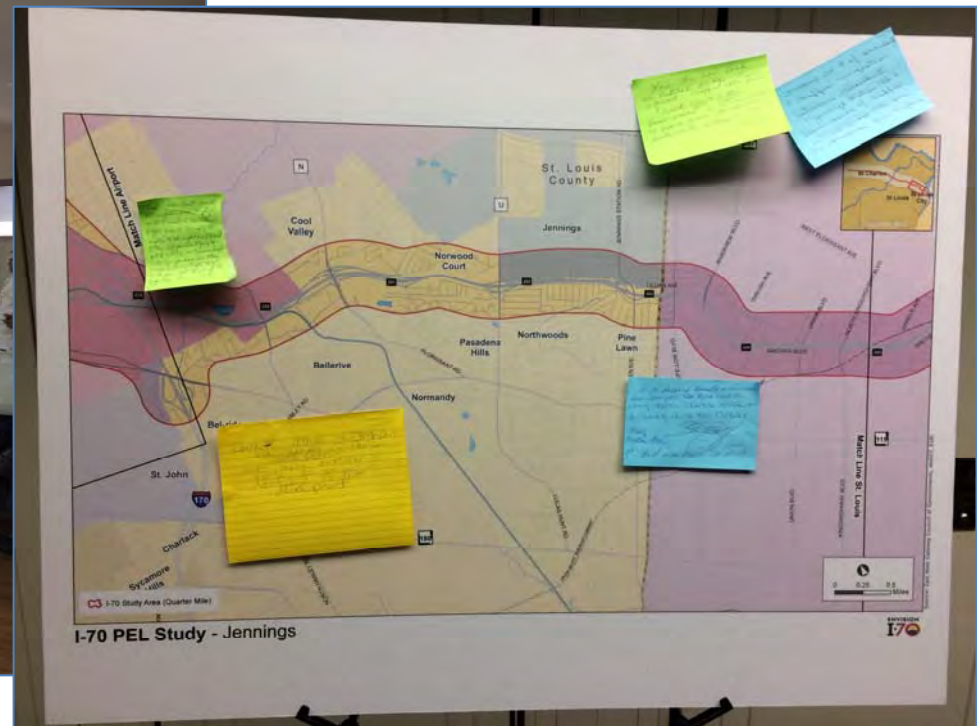
- 13 people attended
- Project boards on display
- Computer stations set up to take survey
- MoDOT, EWG promoted on Facebook

A screenshot of a Facebook event post. At the top, it says 'MoDOT - St. Louis added an event.' with a small profile picture and the date 'March 23'. The main text reads: 'Join the conversation to envision of Interstate 70! MoDOT, Metro and East West Gateway Council of Governments have initiated a study to develop a strategic plan for the future of the I-70 corridor. Attend this meeting and share your vision for I-70.' Below the text is a large graphic with the 'ENVISION I-70' logo at the top. The graphic has a dark blue background with the text 'YOUR OPINION COUNTS!' in large white letters. Below that, it says 'Tell us what you think by submitting comments, feedback and make your voice heard.' At the bottom of the graphic, it shows the event date 'MAR 30' and the title 'Public Meeting on I-70 Planning & E...'. The location is 'Thu 5 PM · Normandy Government Office, 7...' and it notes 'You like MoDOT - St. Louis'. There is a button that says 'Interested' with a dropdown arrow.

Public Official, Resource Agency Briefings



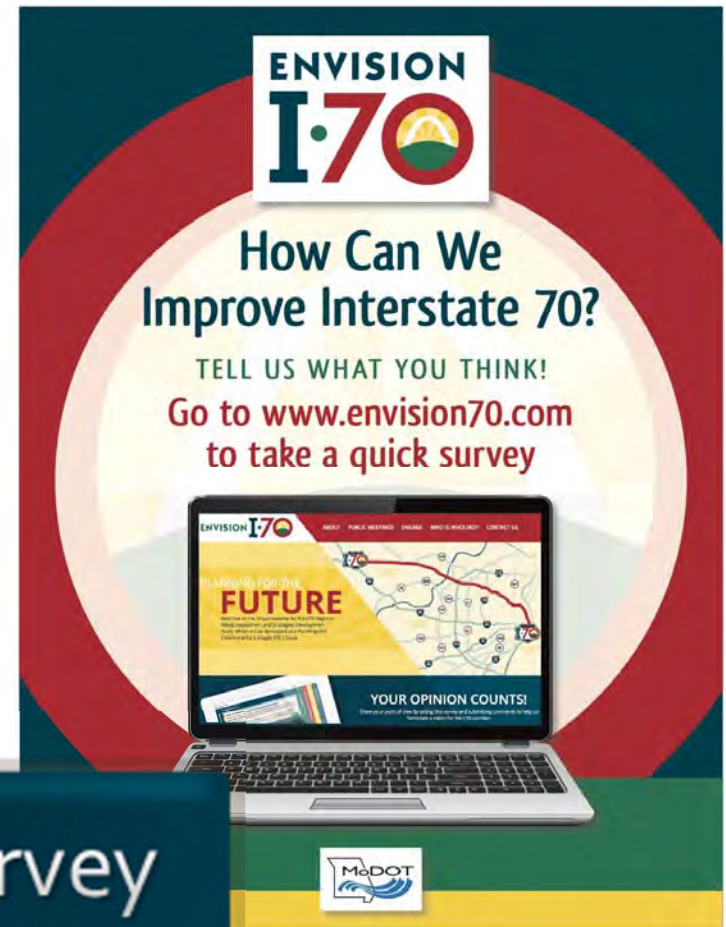
Public Officials: Two locations Resource Agencies: Jefferson City



MetroQuest Survey



- 🌍 Ninety-day open window
- 🌍 Analysis underway
- 🌍 Findings confirm the needs identified by the team
- 🌍 Flyers at public libraries



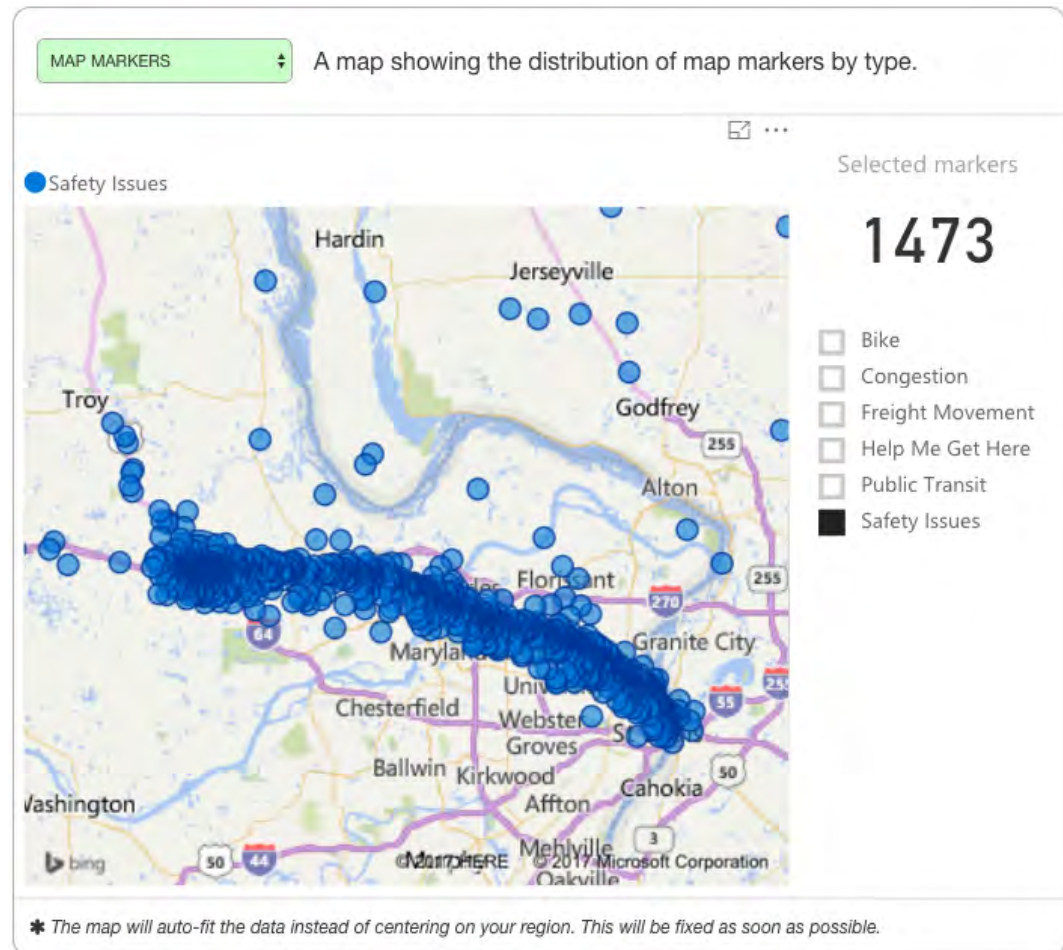
Take the survey
CLICK HERE TO BEGIN



MetroQuest Survey Data



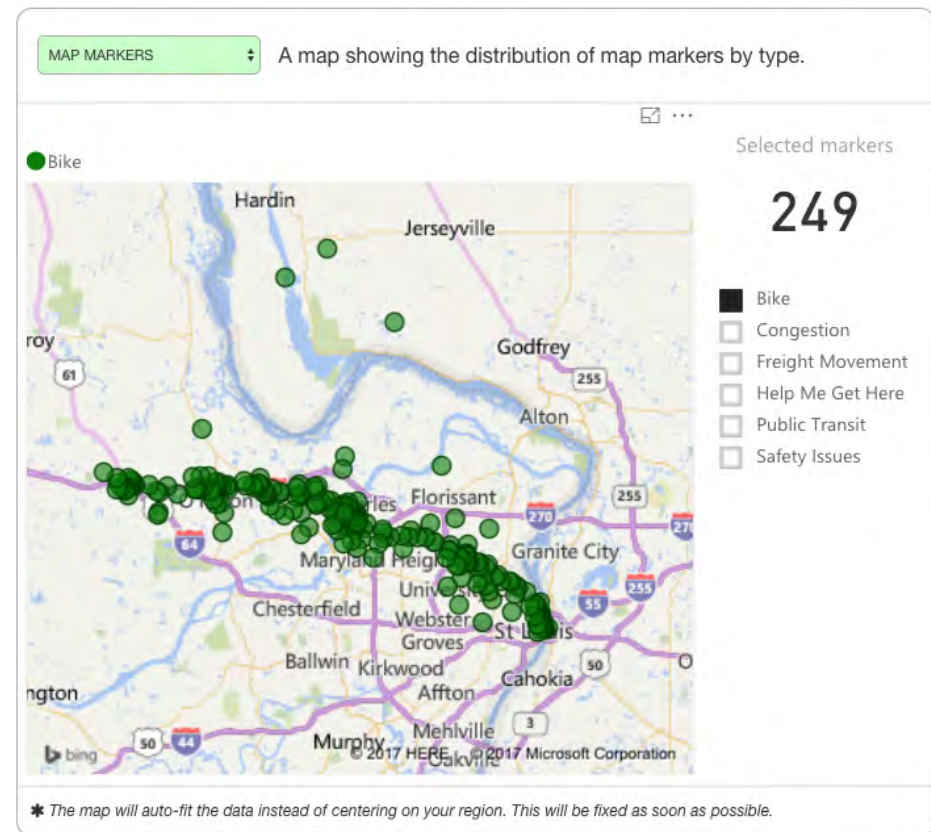
- 2,601 submitted surveys
- 32,525 data points received
- 10,022 markers dropped



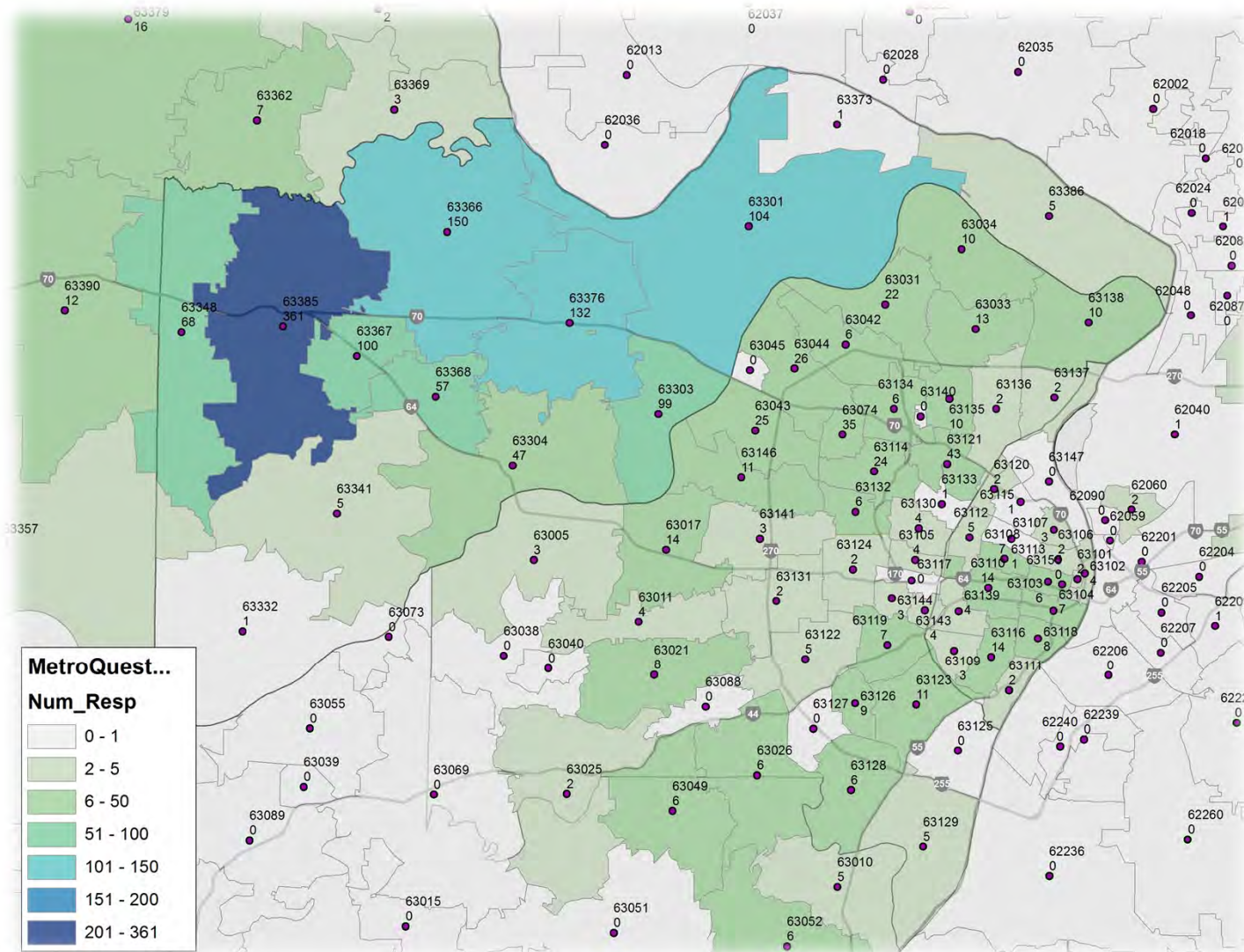
MetroQuest Survey Data



- Project team is reviewing substantive comments
- Comments have been used to determine broad range of alternatives
- Comments reviewed to date have verified existing conditions



Who Participated?



Next Steps



- Senior Advisory Group meeting will follow the three Technical Advisory Group meetings; One more round near conclusion of project
- MetroQuest report to be finalized and delivered; published to website
- Website updated as needed
- Public meeting, officials and resource agency briefings
- Key Influencer Interviews

PURPOSE AND NEED/GOALS



Purpose and Need/Goals



Purpose

The purpose of this study is to investigate and identify the transportation problems on the I-70 corridor and to recommend transportation improvements, solutions, and strategies that would: increase safety on the corridor, manage existing and future traffic congestion, provide efficient access for existing and future development along the corridor, improve efficiency and reliability of freight movement, expand multimodal mobility and connectivity, enhance aesthetics, and preserve the environment.

Purpose and Need/Goals



Needs/Goals

The needs and goals identified were derived from the visions that MoDOT, the TCIG, and stakeholders have for the future of the corridor, data obtained from the Corridor Assessment Report, and comments received from the public, key influencers, stakeholders, and advisory groups.

-  Corridor-Wide
-  St. Charles County
-  St. Louis County
-  St. Louis City

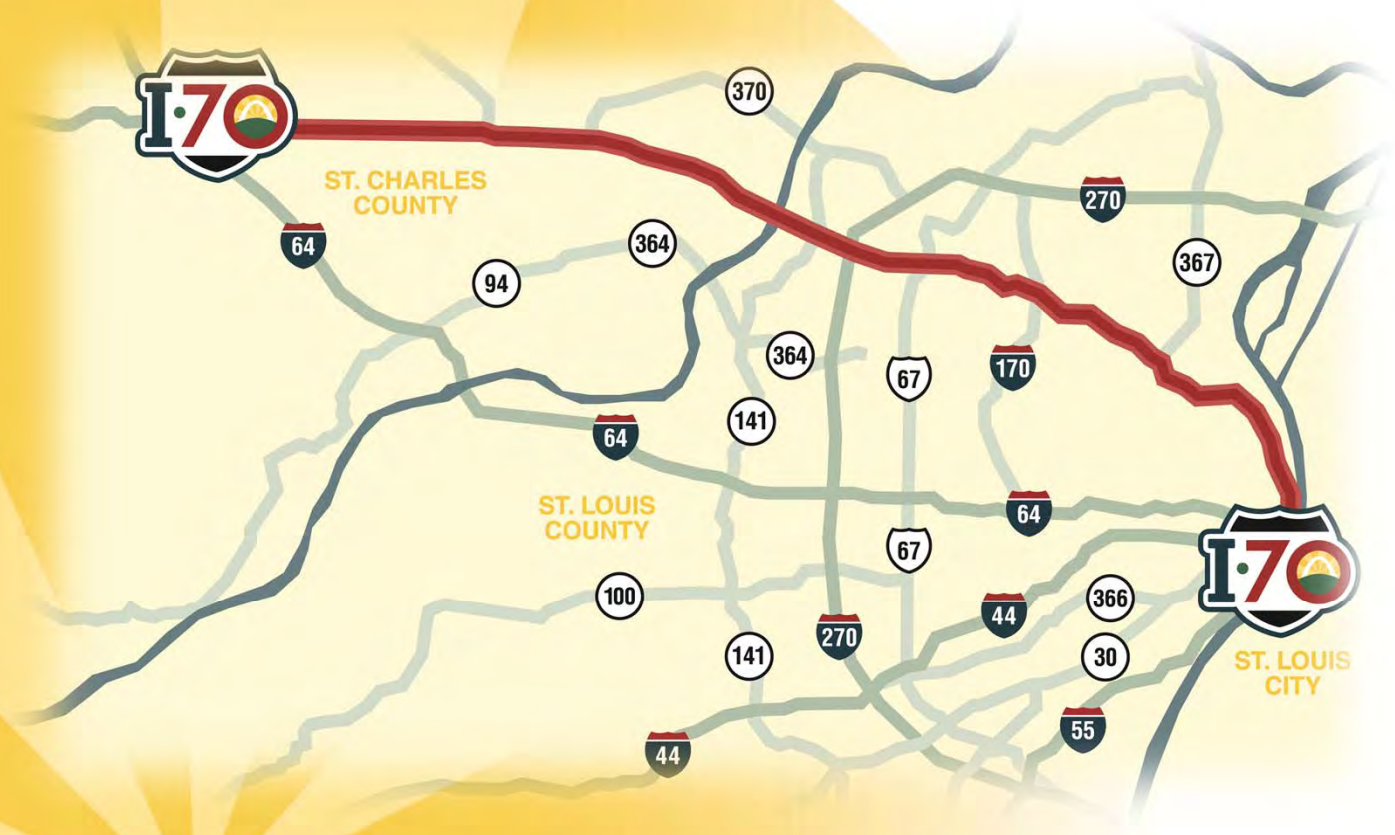
Corridor-Wide Needs/Goals

- Improve connections across I-70 to maintain community cohesion on either side of the highway, including active transportation accommodations
- Enhance aesthetics all along the corridor
- Maintain and increase access to current and future employment centers along the corridor
- Improve operational characteristics to and from interchanges
- Upgrade freight vehicle access
- Increase transit and active transportation travel options in the roadway network
- Improve connectivity of the on-street network to the greenway network along and across I-70
- Anticipate evolution and application of new/smart technologies
- Improve the condition of the infrastructure for sustainability of the corridor
- Increase safety throughout the corridor
- Limit impacts to manmade and natural environmental attributes in the corridor

St. Louis City Needs/Goals

- 🌅 Improve functionality of the reversible lanes
- 🌅 Increase transportation options to households without access to vehicles
- 🌅 Accommodate freight access to river ports
- 🌅 Provide full access interchanges
- 🌅 Provide connection to potential MetroLink expansion

BROAD RANGE OF ALTERNATIVES



Broad Range of Alternatives



- 🌅 Project team has developed a broad range of over 75 alternatives throughout the corridor
- 🌅 Interchange, outer roads, and mainline improvements and reconfigurations are included
- 🌅 Improvements will accommodate bike, pedestrian, and transit movements and access

WHAT'S NEXT?



What's Next?



- 🌍 Project team will evaluate the alternatives based on the Purpose and Need and Goals of the Project
- 🌍 Level 1 and Level 2 screening process will determine which alternatives will be carried forward
- 🌍 Project team will begin to prepare the PEL Report and Questionnaire

What's Next?



- Present final PEL recommendations
 - Advisory Group Meetings (November 2017)
 - Public Meeting (November/December 2017)
 - Public Officials Briefing (in conjunction with Public Meeting)

- PEL Report and Questionnaire (December 2017)

THANK YOU!



Questions?