



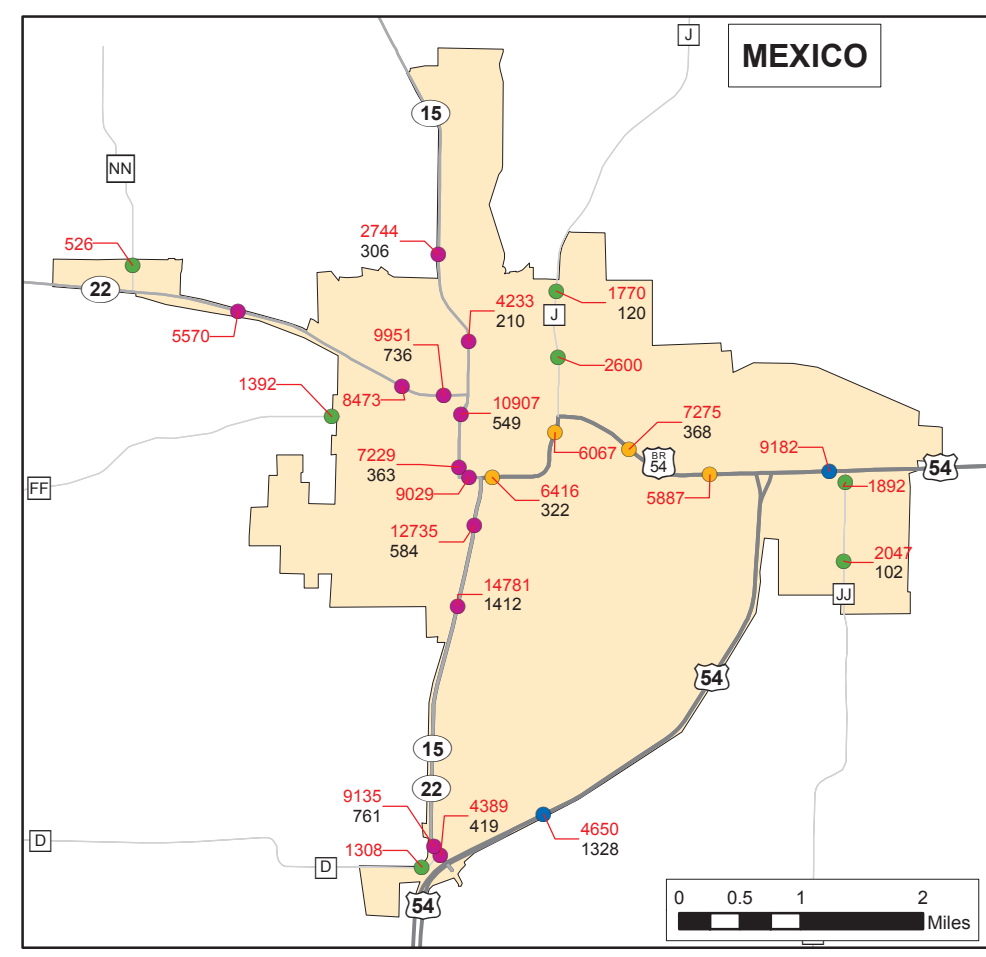
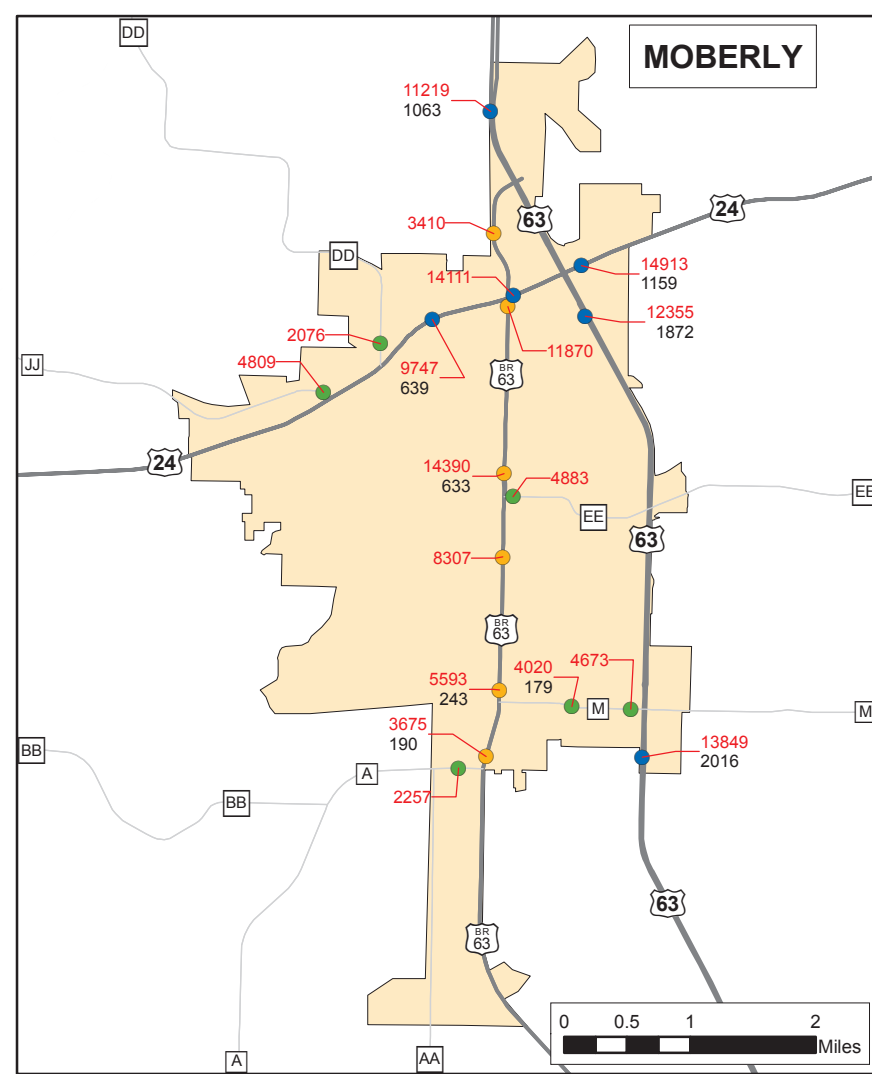
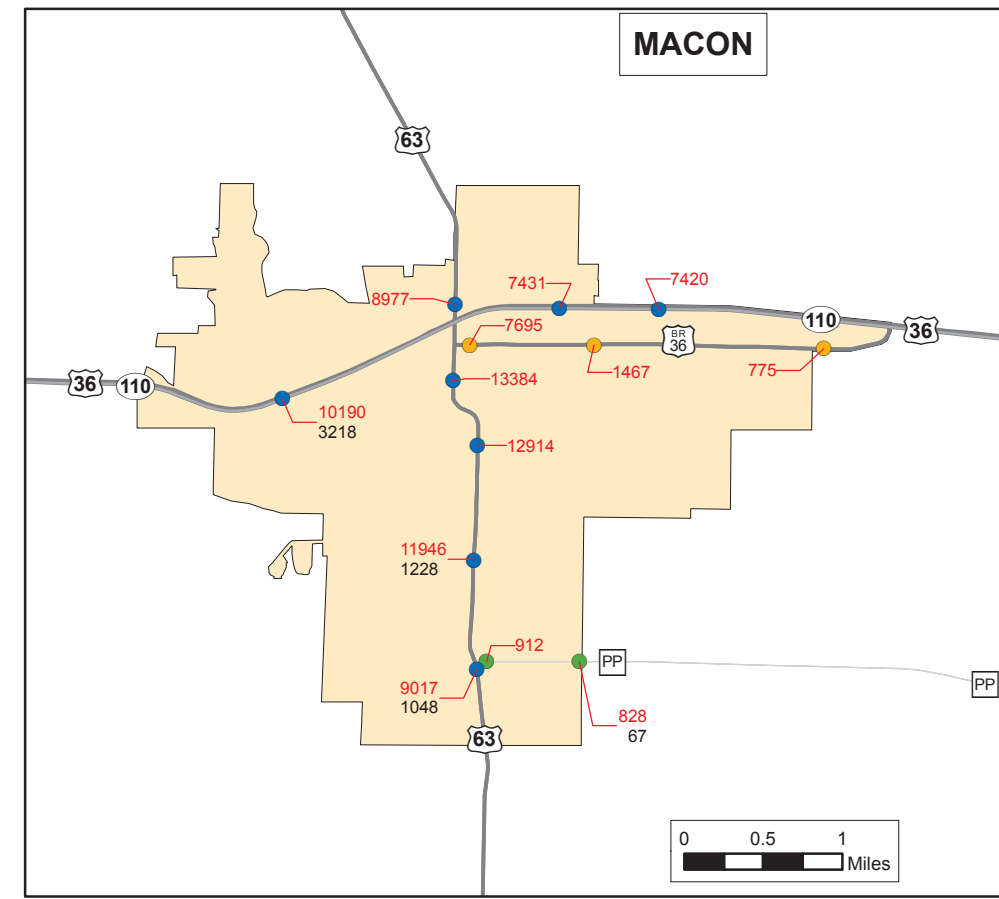
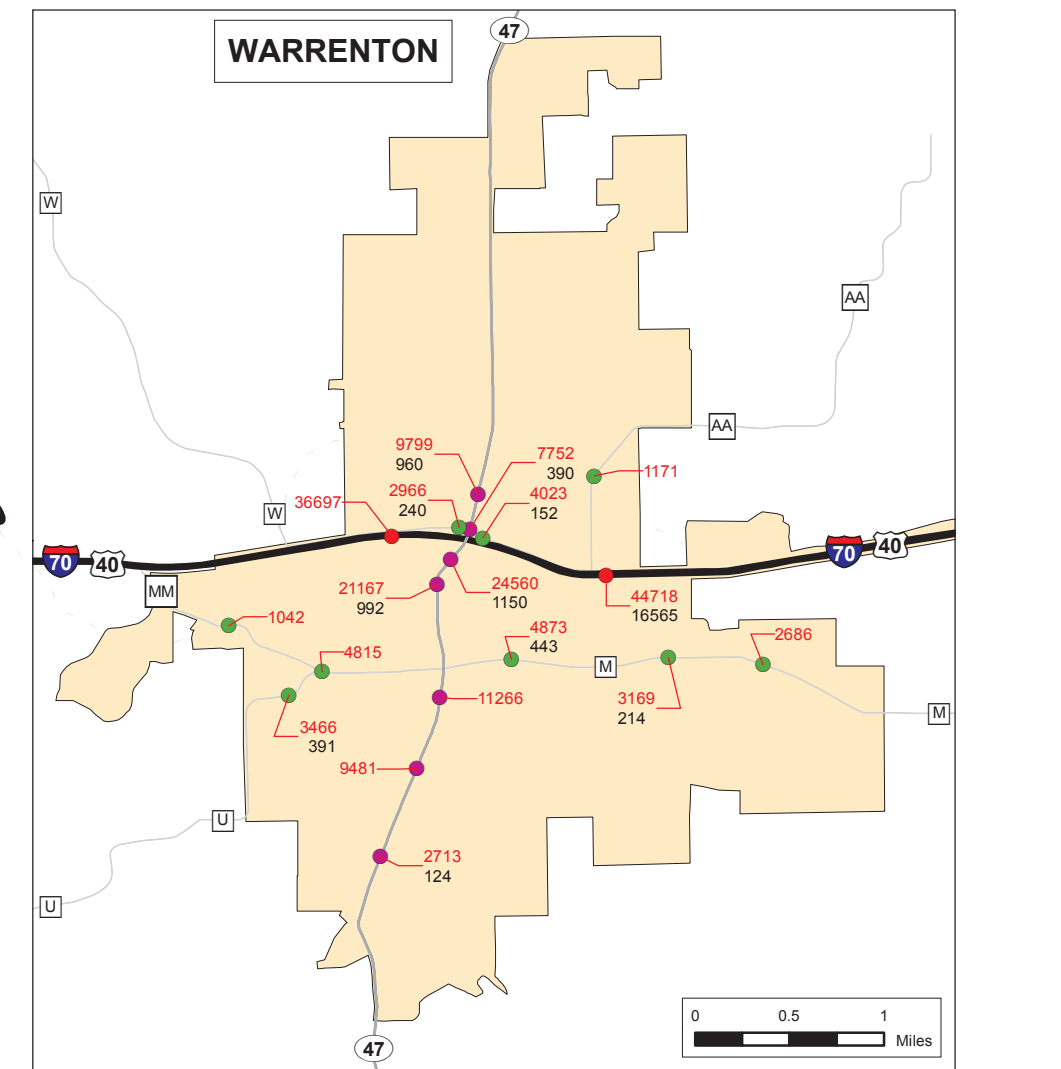
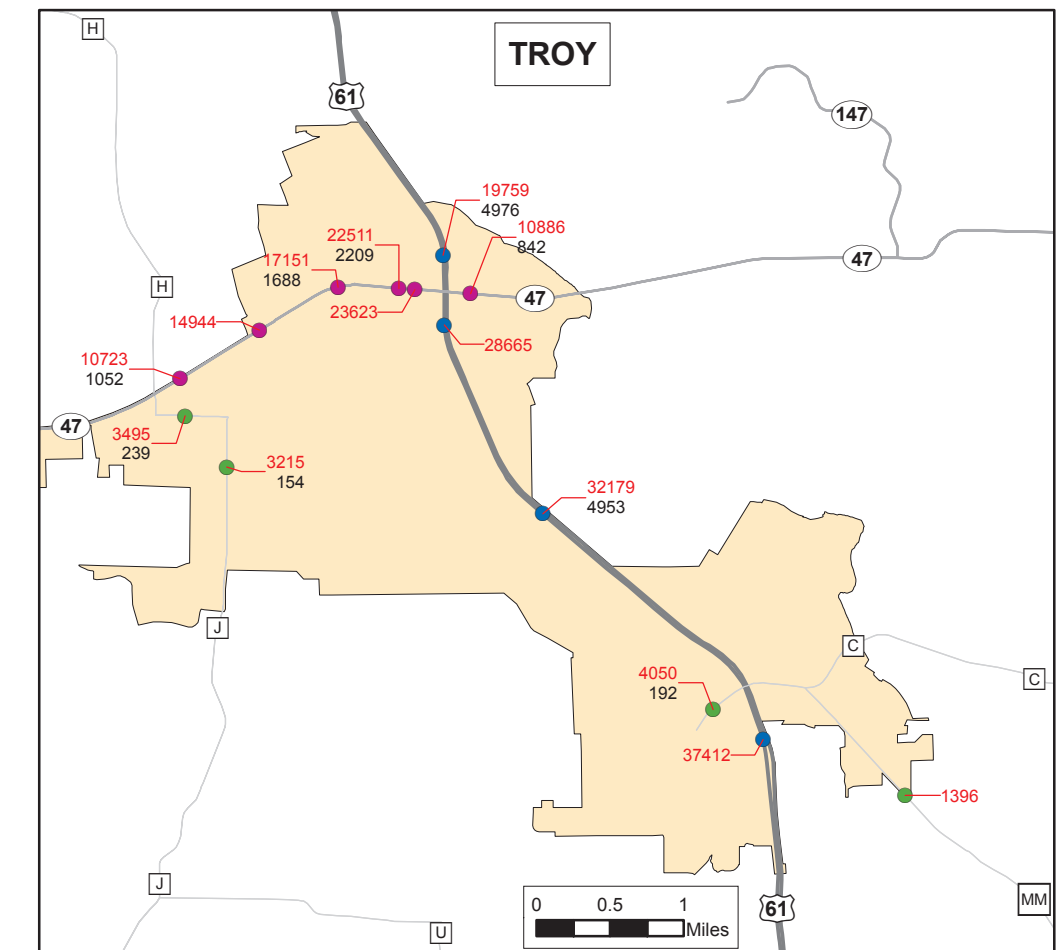
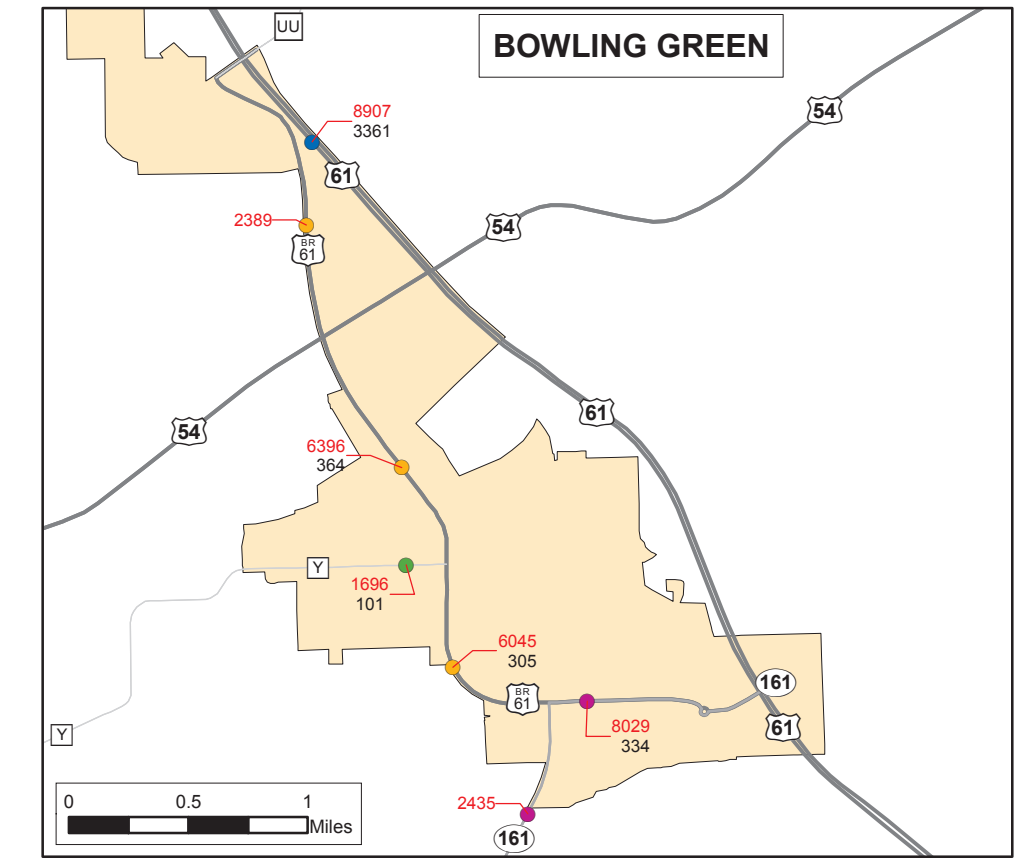
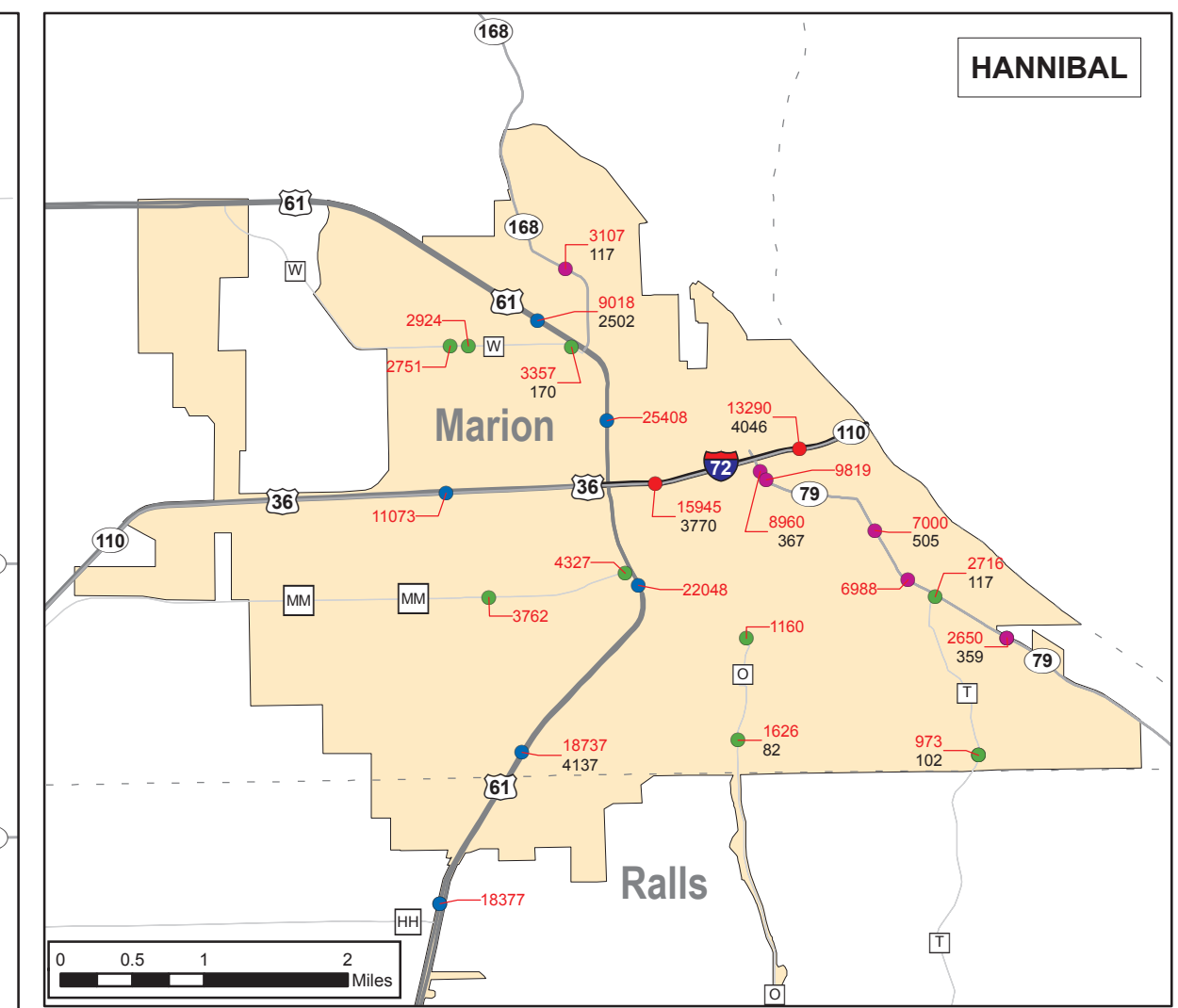
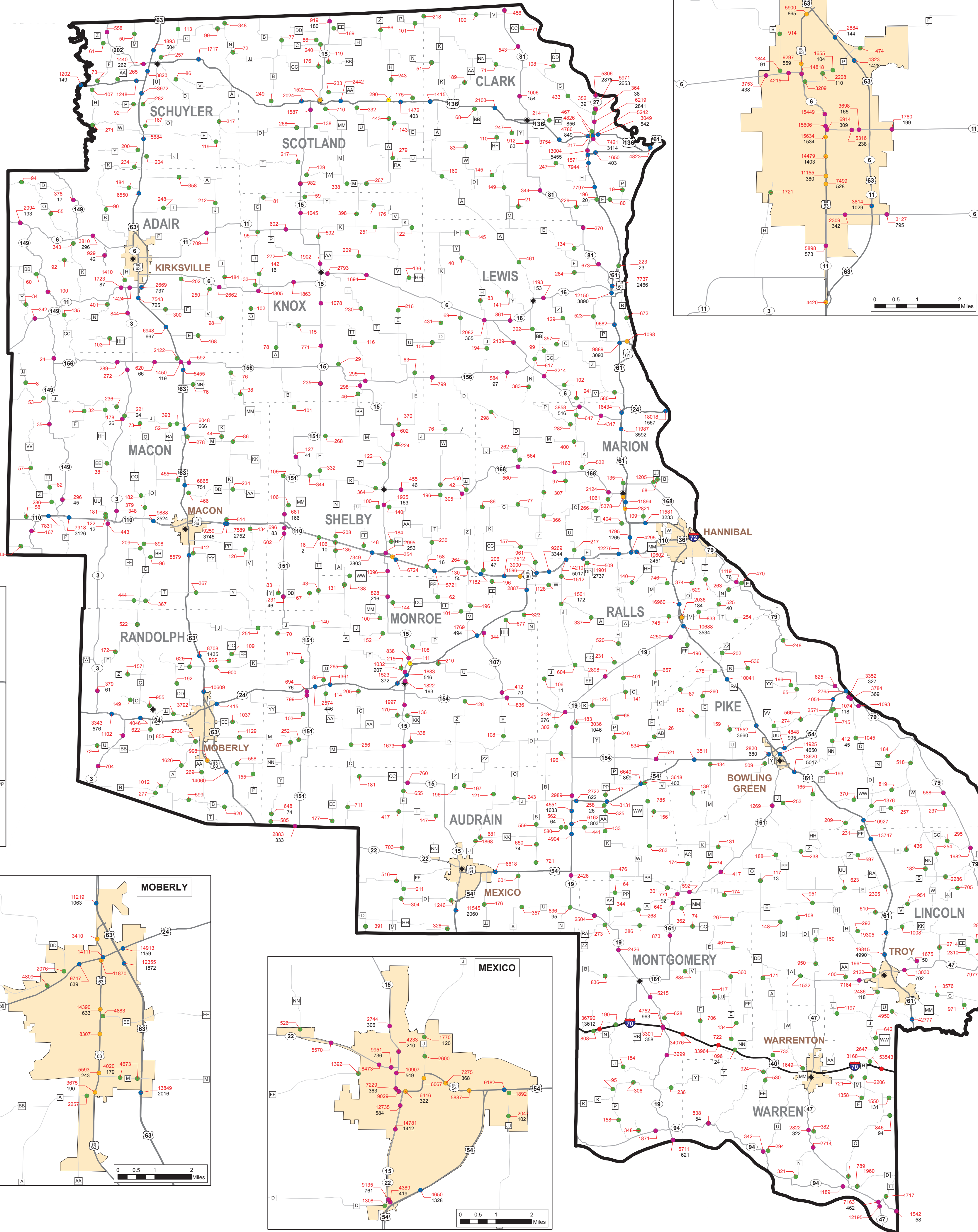
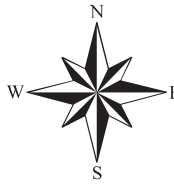
Missouri Department of Transportation

# 2016 Northeast District Traffic Volume and Commercial Vehicle Count Map

Prepared by:  
Missouri Department of Transportation  
Transportation Planning  
105 W. Capitol Ave.  
Jefferson City, MO 65102  
Phone 1-888-ASK-MODOT  
Fax (573) 526-8052

[www.modot.org](http://www.modot.org)

This report contains information that is protected from disclosure by federal law, 23 USC Section 409 and the Missouri Open Records Law (Sunshine Act), Section 610.021 RSMo. Please review MoDOT's policy and procedure manual on the Sunshine Act before releasing any of the information contained herein.



**Legend**

- Interstate
- US Routes
- MO Routes
- Lettered Routes
- Business Routes and Loops
- Spur Routes and Alternate Routes

23462 Traffic Volume (AADT)  
1673 Truck Volume

- ◆ County Seat
- Urban Areas
- Counties

0 5 10 20 30 Miles

AADT = Annual Average Daily Traffic  
Note: Some AADTs on this map are estimates. All data is processed and reported in accordance with the Federal Highway Administration Traffic Monitoring Guide.