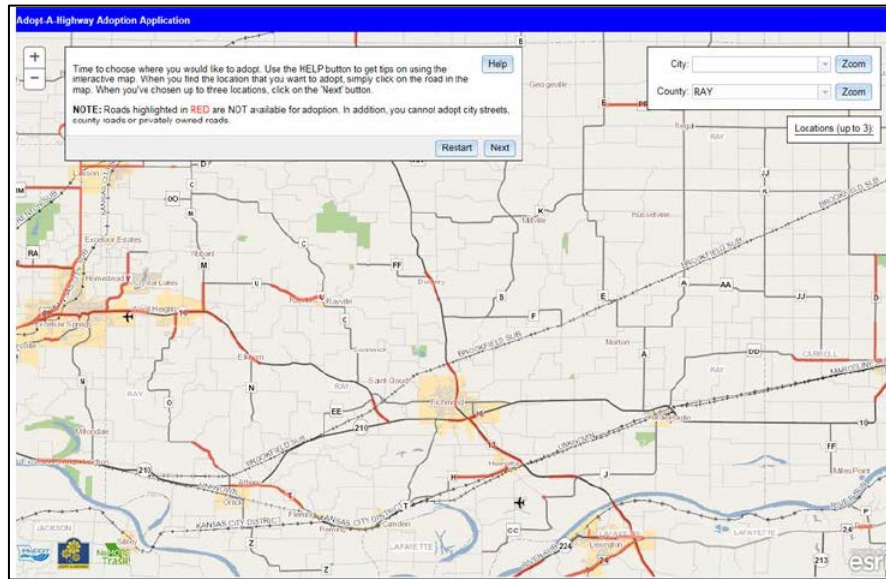


Interactive Adopt-A-Highway Map



Description

The online Adopt-A-Highway map is an interactive map application that saves time, simplifies work and improves customer satisfaction. The map for external users was created by Information Systems with input from Maintenance and all of the districts. It was designed around the ESRI mapping API for HTML and JavaScript. The online map provides a way for a potential adopter to select up to three possible adoption locations and is available on the Adopt-A-Highway page on MoDOT's website. Potential locations are searchable by county, city and address or by panning or zooming the interactive map. The map interfaces with the Adopt-A-Highway application in the Transportation Management System and shows areas already adopted. The potential adopter selects up to three locations and then is required to provide additional information on a fillable form. This information is then emailed directly to the appropriate Adopt-A-Highway district coordinator. This is a new practice for MoDOT used in all districts and is not associated with another agency or association.

Benefit

Litter cleanup costs MoDOT \$6 million per year, with volunteers providing another \$1.5 million in value in cleaning up litter. More volunteers means less time spent by maintenance crews picking up litter so they can concentrate on critical roadway activities. The new interactive map makes the process of adopting a road more efficient and saves significant staff time by reducing phone calls, emails and letters to work out details. Feedback from customers has been positive.

Materials and Labor

Materials: \$15,355 – FTE and consultant costs. No reoccurring costs.
Labor: 165.5 hours

For More Information Contact:

Stacy Armstrong at stacy.armstrong@modot.mo.gov or (573) 751-8647.

Additional photos can be seen by accessing the Innovations Challenge SharePoint page at: <http://sharepoint/systemdelivery/TP/Documents/InnovationsChallenge.aspx>.