

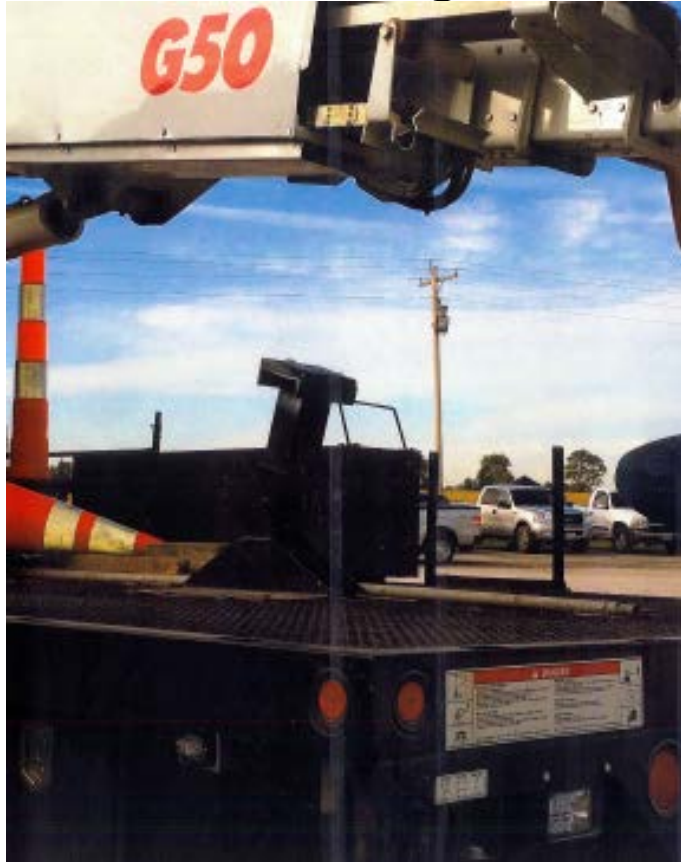
T & E First-Round Winner

Innovations Challenge
<http://wwwi/intranet/cr/SolutionsAtWork/Innovations.htm>

April 2015

Prepared by Transportation Planning
Missouri Department of Transportation

Stow Assist Light



Description

Currently when lowering the boom from inside the basket, the alignment stripe on the turret is not visible. This mounted light assembly allows the operator of an aerial truck know when the turret and boom are properly aligned to safely lower into the boom rest without causing any damage to the unit. This feature requires minimal training to be used effectively.

Benefit

This light saves time by allowing the operator to verify proper positioning to stow the boom rest. Without this light, the operator would need an assistant on the ground to ensure no damage is caused by improper stowing. If severe damage occurs, it could result in equipment downtime and costly repairs of up to \$1,200. Damage could also compromise the integrity and safety of the boom.

For More Information Contact:

Daniel Koch at Daniel.koch@modot.mo.gov or (660) 346-0405.

Additional photos can be seen by accessing the Innovations Challenge homepage at:
<http://wwwi/intranet/cr/SolutionsAtWork/Innovations.htm>.