

**T & E First-Round Winner**  
Innovations Challenge

**April 2016**

Prepared by Transportation Planning  
Missouri Department of Transportation

## Tractor-Mounted Weedeater



### Description

The Tractor-Mounted Weedeater works to mow around delineators, guardrail and guard cable in a timely, safe and efficient manner. For example, a district crew of two members mowed from the Iowa border to the St. Louis District line in two weeks with one tractor and one safety truck.

### Benefit

Using the mounted weedeater increases safety by reducing exposure to the elements and traffic. It also saves time and money, as well as simplifies work.

### Materials and Labor

Materials cost: \$5,675

Labor: 80 hours

### For More Information Contact:

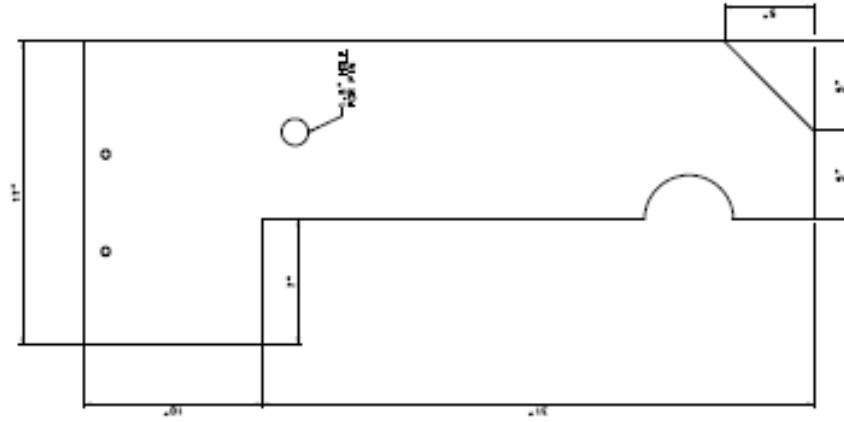
Todd Greenstreet at [todd.greenstreet@modot.mo.gov](mailto:todd.greenstreet@modot.mo.gov) or (660) 465-2005.

Additional photos can be seen by accessing the Innovations Challenge SharePoint page at:

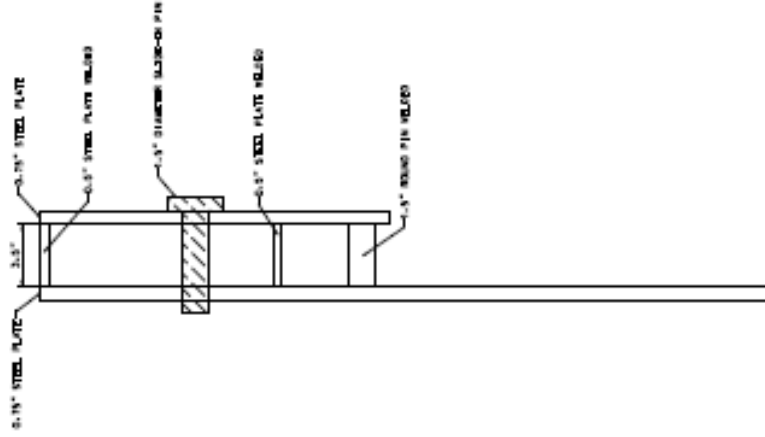
<http://sharepoint/systemdelivery/TP/Documents/InnovationsChallenge.aspx>.

# Innovations Challenge

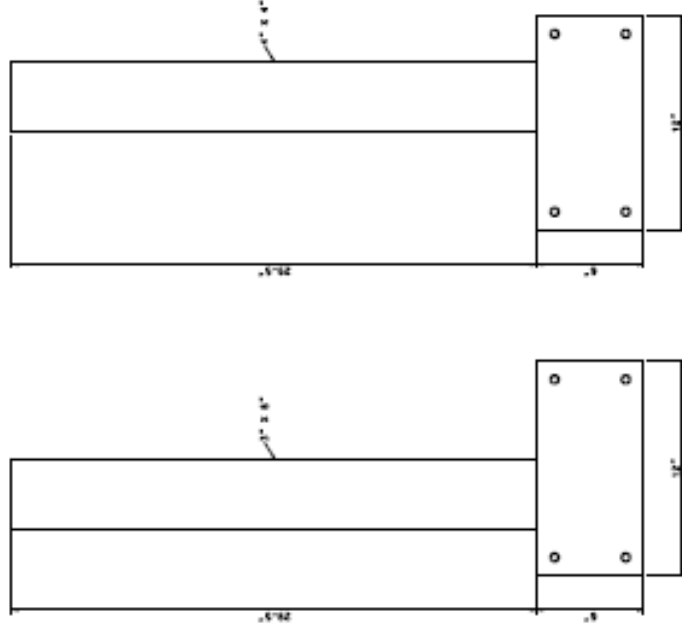
SIDE VIEW



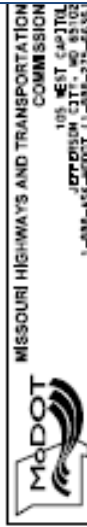
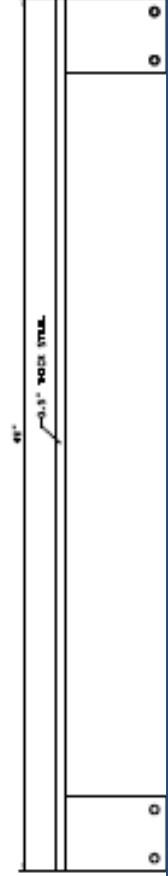
FRONT VIEW



BRACKETS



CROSS PIECE



2016 INNOVATIONS CHALLENGE  
 NORTHEAST DISTRICT  
 MEMPHIS WEED EATER

"WE'VE GOT TO BUILD  
 OUT TO INNOVATION  
 IN MICHIGAN"