

Missouri Department of Transportation

Highways and Transportation Commission 573-751-2824

Gregg C. Smith, Chair
 Michael B. Pace, Vice Chair
 Michael T. Waters, Jr.
 John W. Briscoe
 Robert G. Brinkmann
 Terry L. Ecker

Patrick K. McKenna, Director 573-751-4622

MoDOT Central Office
 PO Box 270
 Jefferson City, Missouri 65102

Customer Service 888-ASK-MODOT
 Toll Free in Missouri 888-275-6636

Highway Safety 800-800-2358
 Oversize/Overweight Permits 866-831-6277
 Motor Carrier Services 866-831-6277

MoDOT District Offices
 Northwest (St. Joseph) 816-387-2350
 Northeast (Hannibal) 573-248-2490
 Kansas City (Lee's Summit) 816-622-6500
 Central (Jefferson City) 573-751-3322
 St. Louis (Chesterfield) 314-275-1500
 Southwest (Springfield) 417-895-7600
 Southeast (Sikeston) 573-472-5333

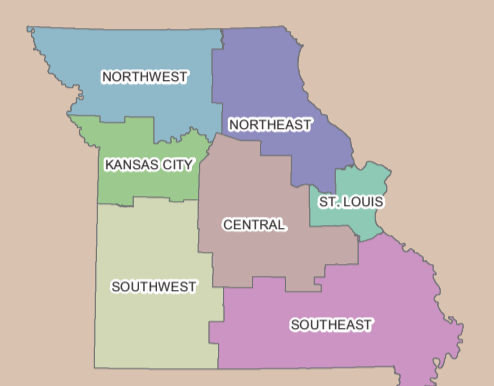
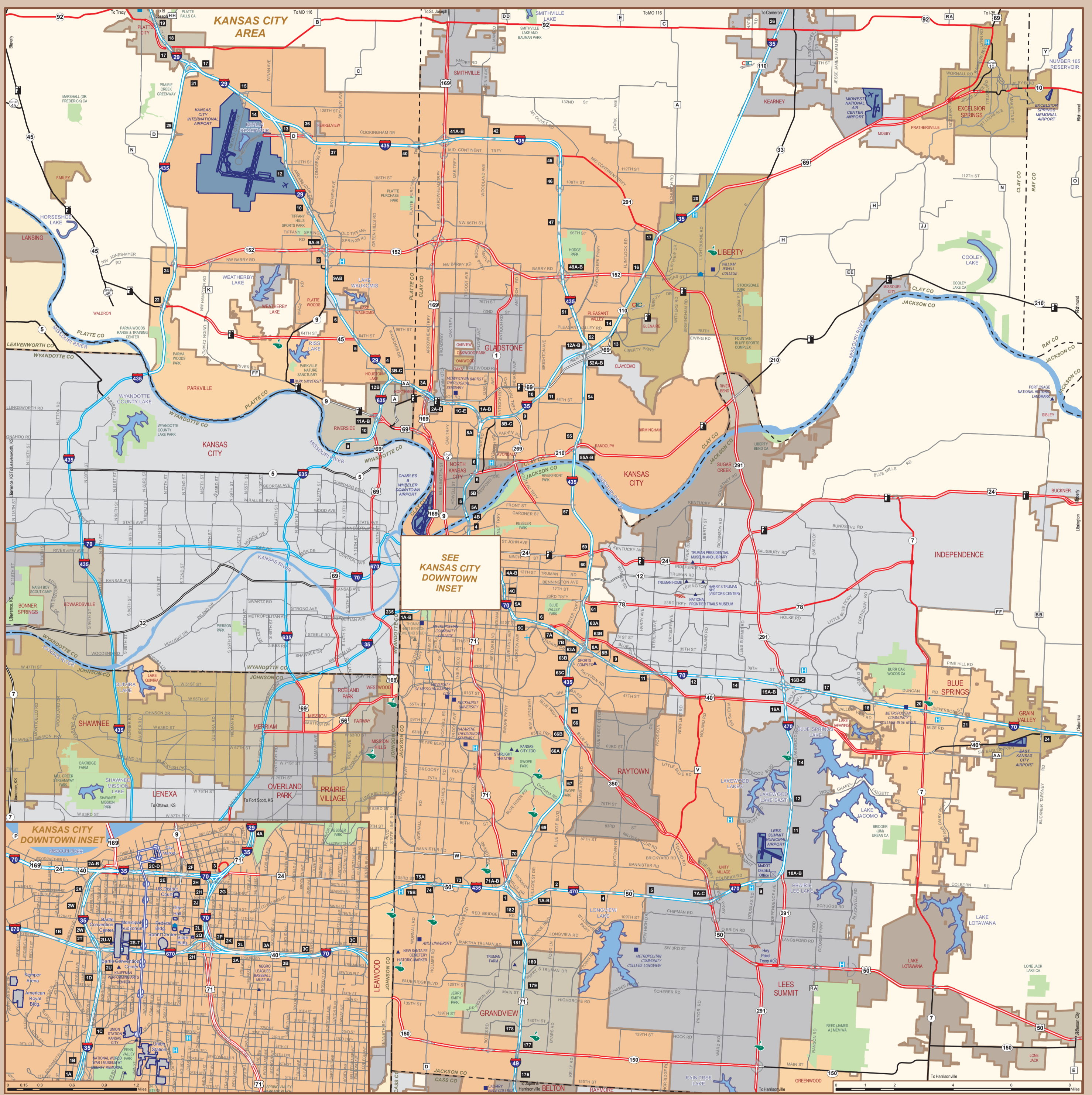
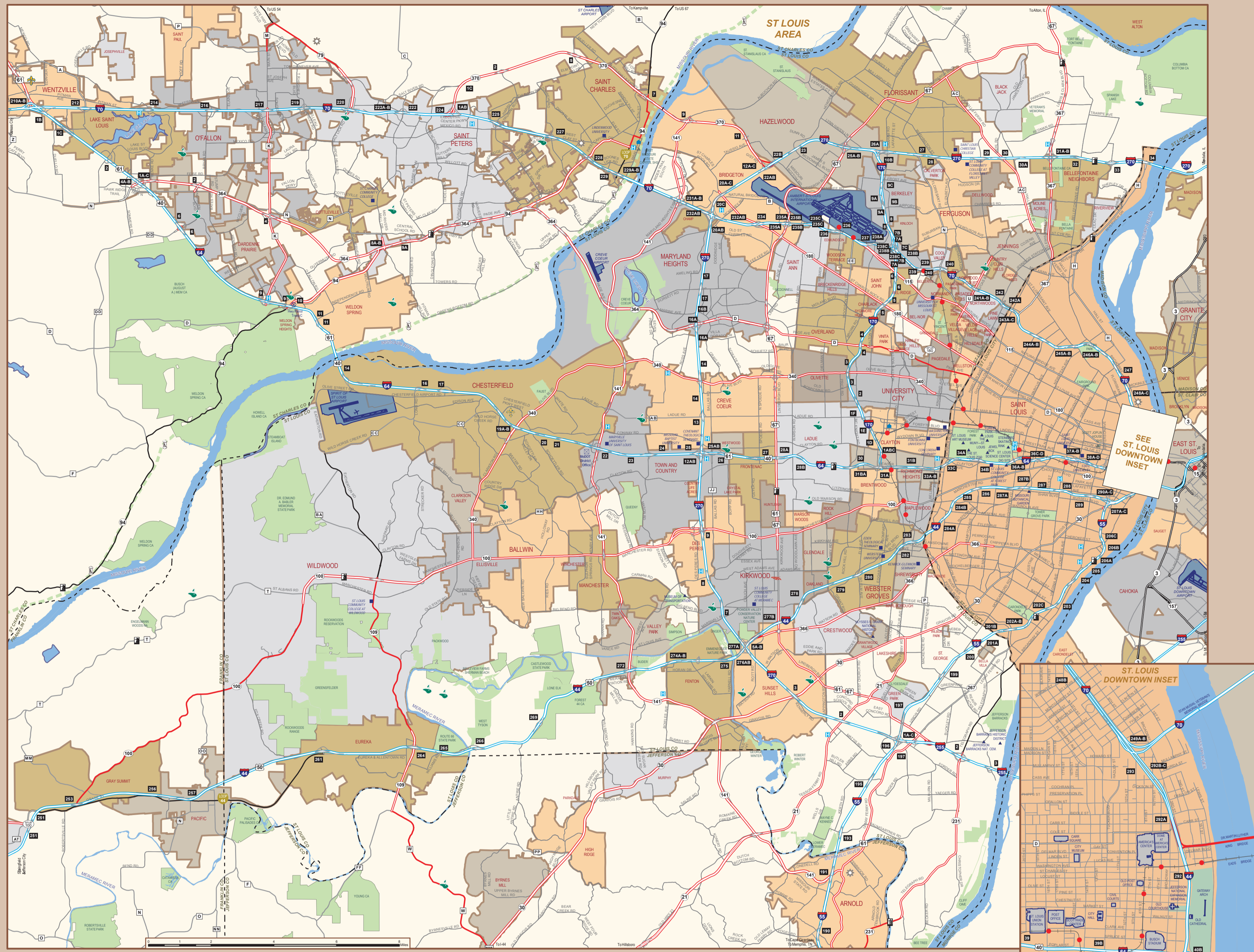
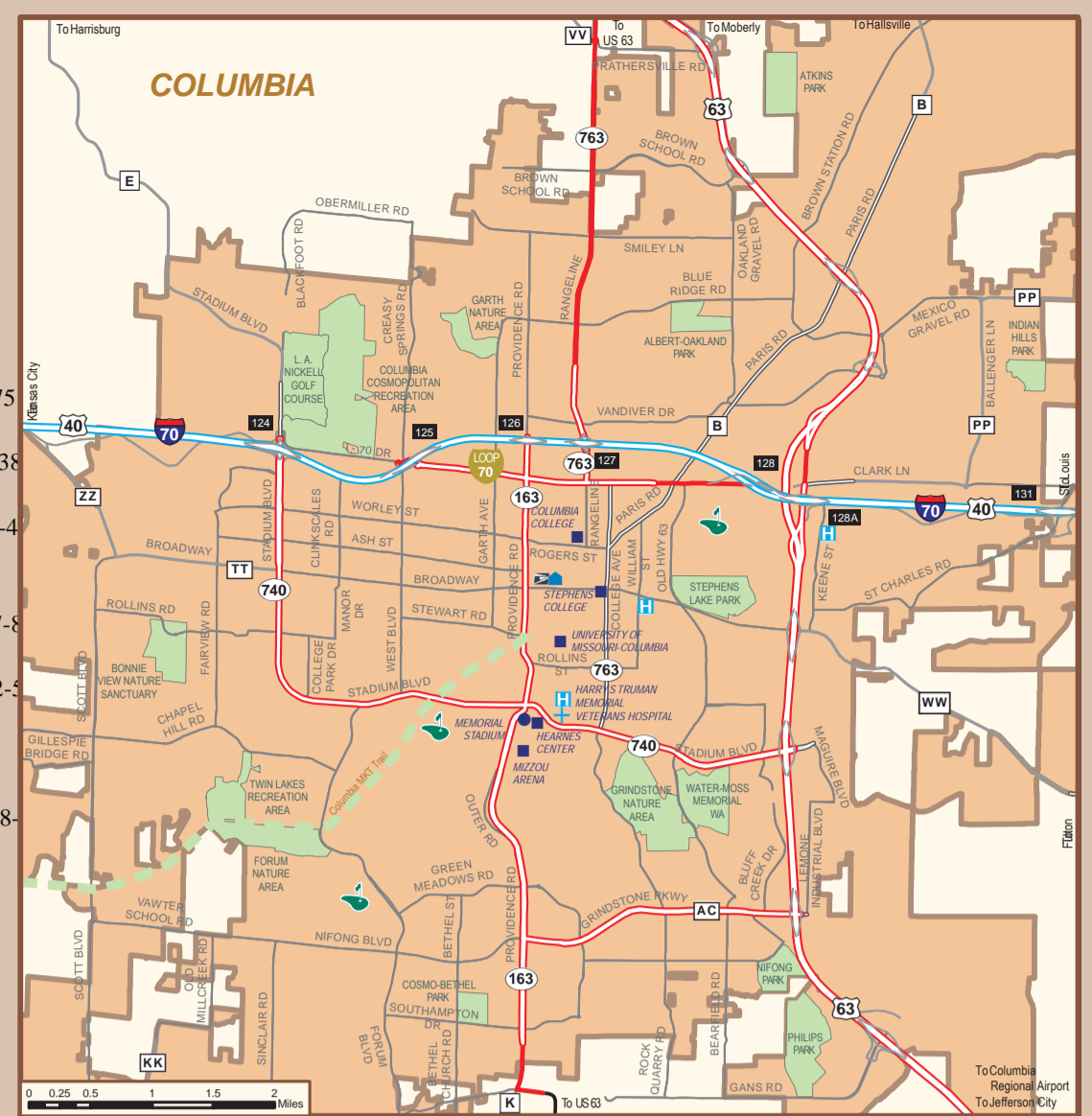


Missouri State Highway Patrol

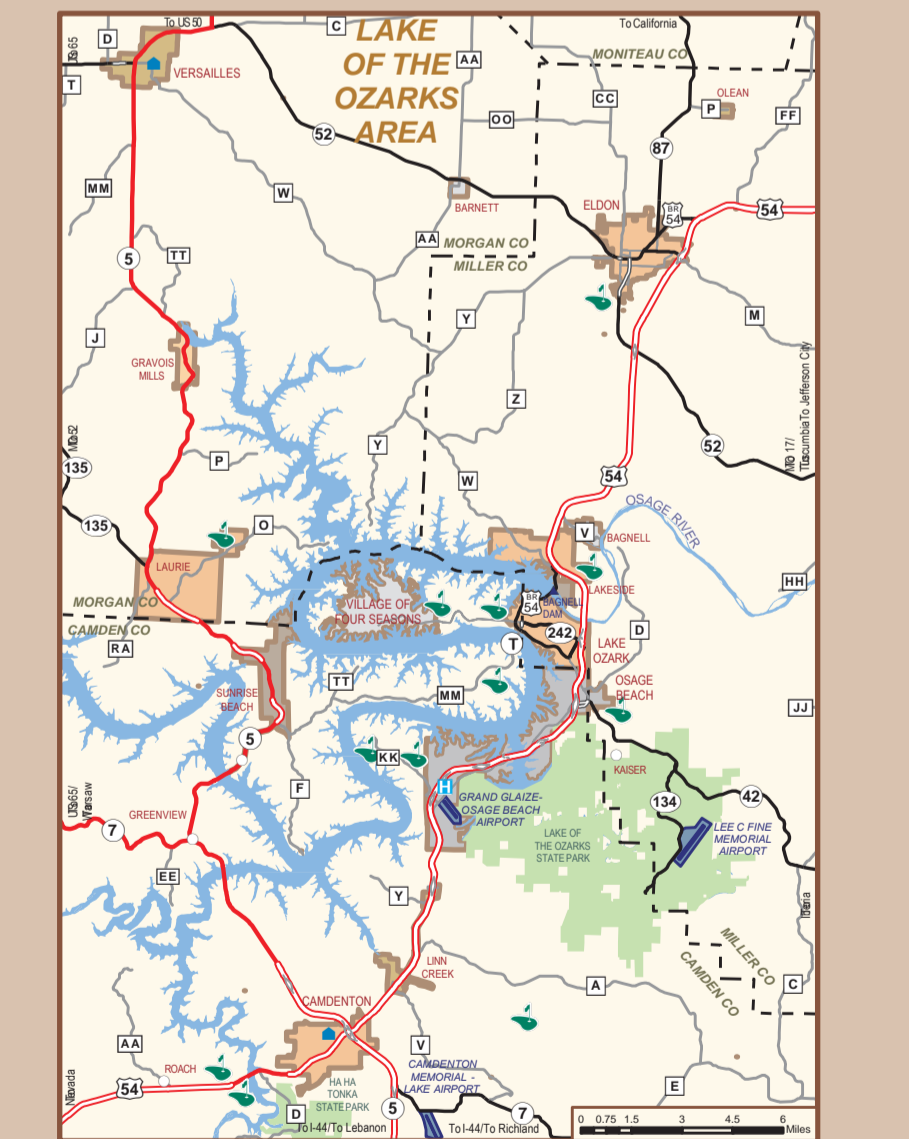
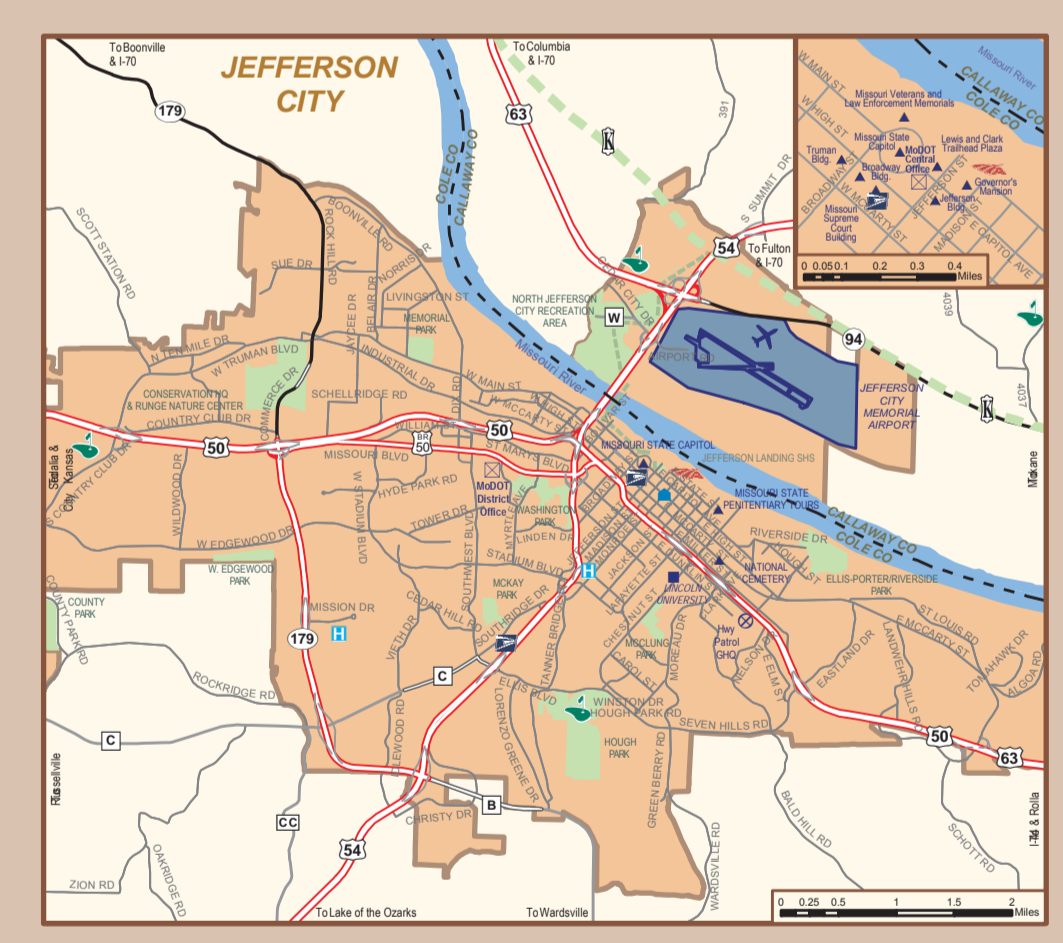
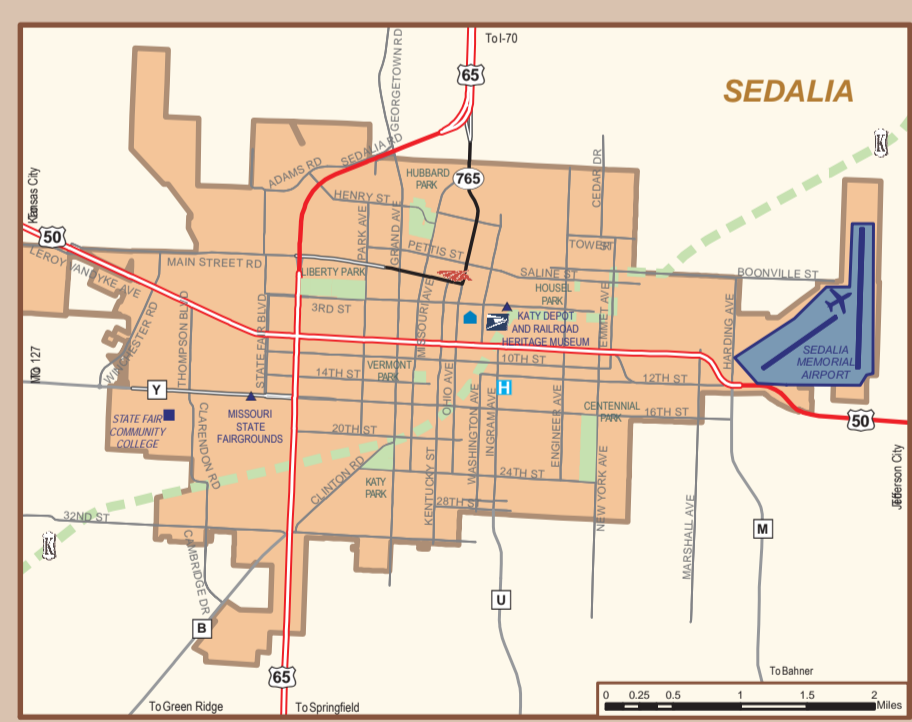
Emergency 800-525-5555 or *55 on a cellular phone
 Non-emergency 573-751-3313

GHQ - Jefferson City 1510 E. Elm St. 573-751-3313
 Troop A - Lee's Summit 504 S.E. Blue Parkway 816-622-0800
 Troop B - Macon 308 Pine Crest Dr. 660-382-6603
 Troop C - Weldon Spring 891 Technology Dr. 636-300-2800
 Troop C - St. Louis 3180 Koch Rd. 573-431-0166
 Troop C - Park Hills 5268 Flat River Rd. 573-431-0166
 Troop D - Springfield 3131 E. Kearney St. 417-895-6868
 Troop D - Carthage 5182 S. Grand Ave. 417-352-2345
 Troop E - Poplar Bluff 4947 Highway 67 North 573-840-9500
 Troop E - Sikeston 105 Kaystone Dr. 573-472-5333
 Troop F - Jefferson City 2920 N. Shannon Rd. 573-751-1000
 Troop G - Willow Springs 1226 W. Bus. Route 60/63 417-469-3121
 Troop H - St. Joseph 3525 N. Belt Highway 816-387-2345
 Troop I - Rolla 1301 Nagogami Rd. 573-368-3683

www.mshp.dps.missouri.gov



LEGEND
 DISTRICT OFFICE
 HIGHWAY PATROL OFFICE
 COURTHOUSE
 POST OFFICE
 METRO STATION
 KC STREETCAR STATION
 GOLF COURSE
 U.S. FISH AND WILDLIFE ROUTE
 METROPOLITAN STATION
 KC STREETCAR STATION



MISSOURI KNOW WHAT'S THERE BEFORE YOU GO VISITMO.COM

Travel Resources

Department of Transportation
 Traveler Information Map
 www.traveler.modot.org

Division of Tourism
 To order a Missouri Travel Guide
 www.VisitMO.com 800-519-4800

Department of Revenue
 Driver & Motor Vehicle Licensing
 www.dor.mo.gov 573-751-4600

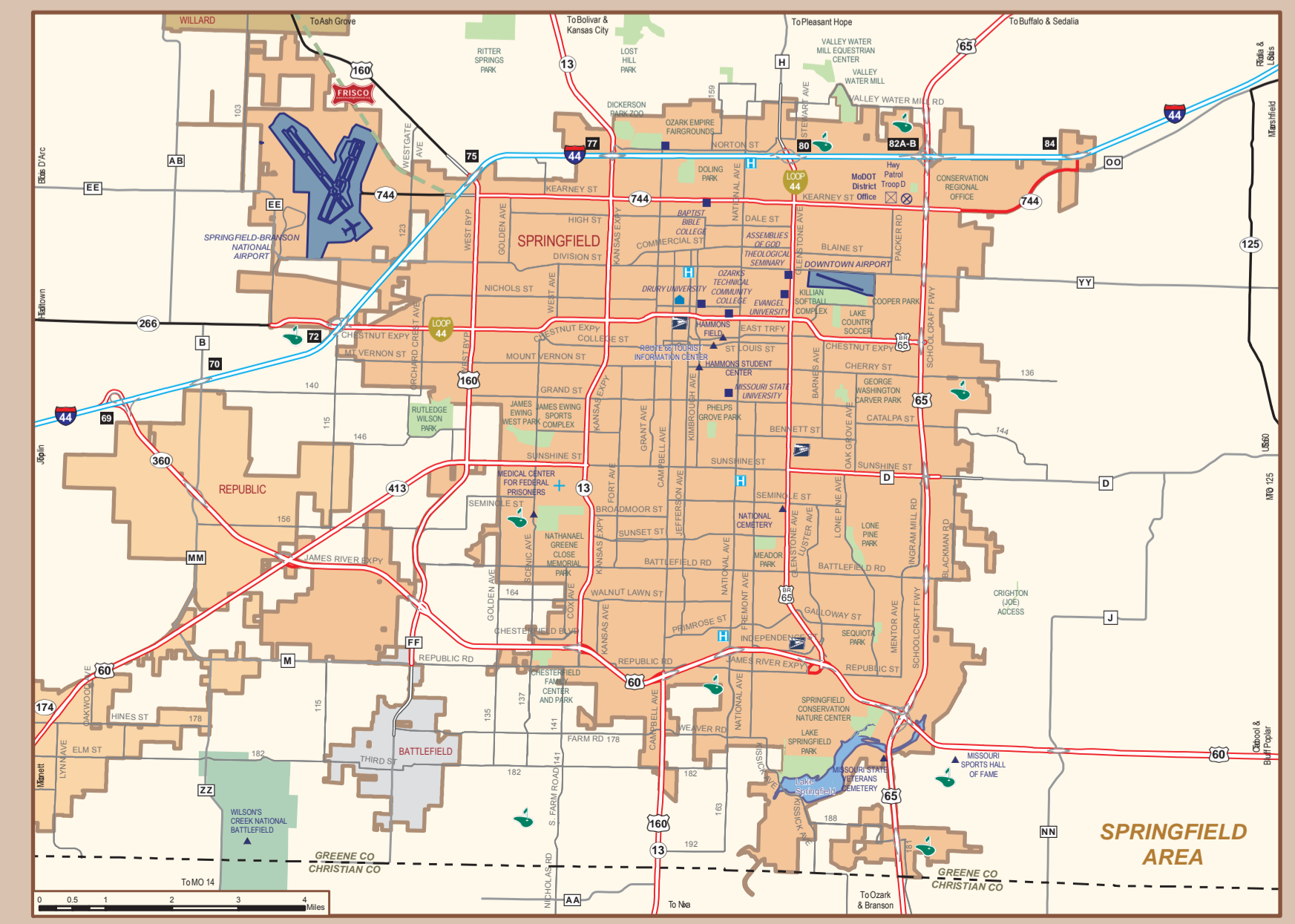
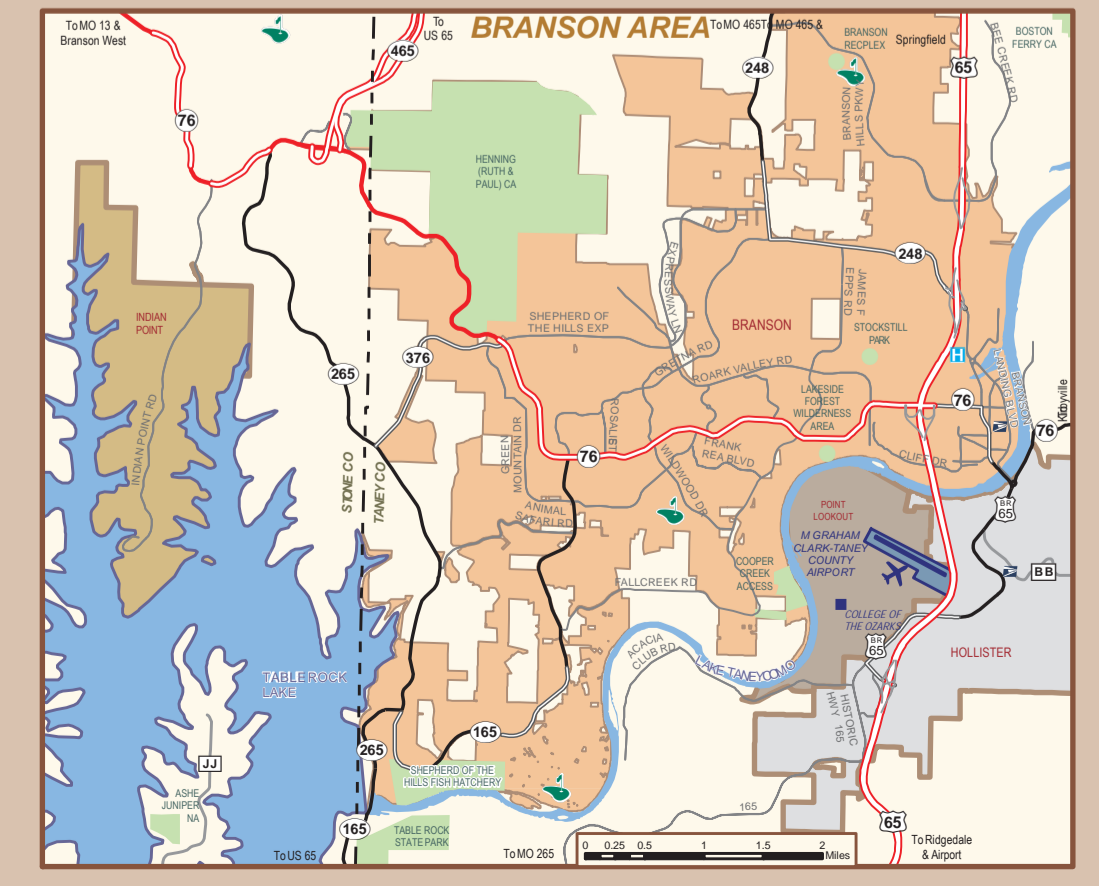
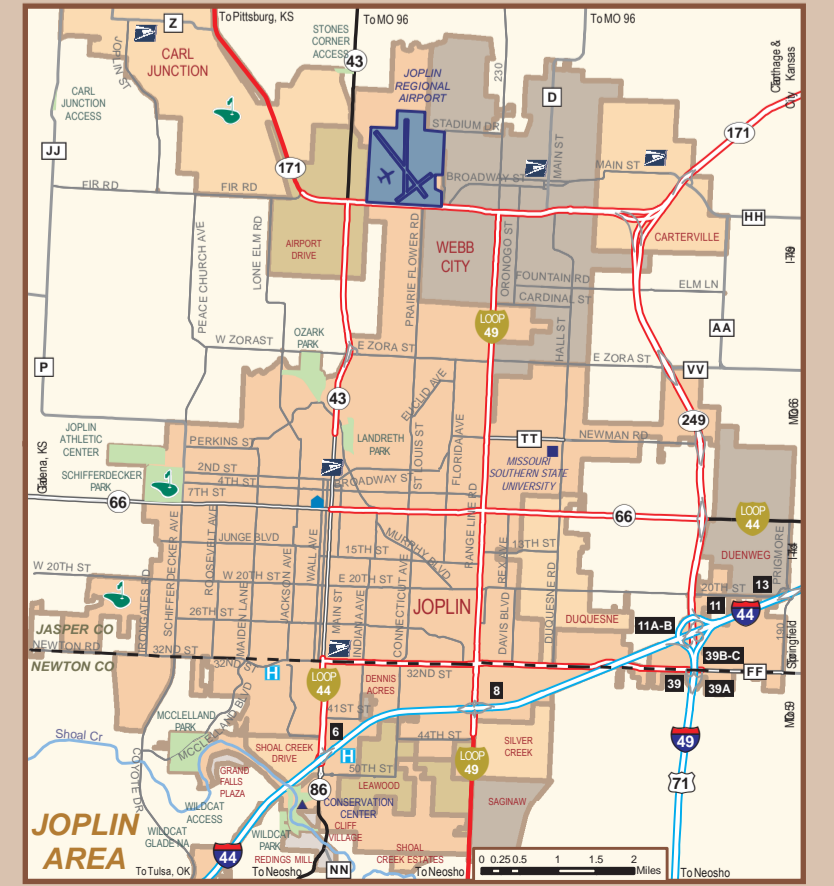
Department of Conservation
 Nature Areas, Hunting & Fishing
 www.mdc.mo.gov 573-751-4115

Department of Natural Resources
 Park & Historic Site Information
 www.mostateparks.com 800-334-6946
 800-379-2419 (TDD)

Amtrak
 Tickets & Information
 Amtrak.com 800-USA-RAIL
 800-872-7245

Water Patrol Division
 News & Information
 www.mshp.dps.missouri.gov/MSHPWeb/WaterPatrol 573-751-3313

Relay Missouri
 Provides full telephone accessibility to the deaf, hard of hearing, deaf-blind, and speech disabled
 Dial 711 or 800-735-2966 (TTY)
 866-735-2460 (Voice)



Fifty Years Ago, the Gateway Arch Opened to the Public

Even at 50 years old, St. Louis' Gateway Arch is still an engineering marvel. The cross sections of the Arch's legs are equilateral triangles. Each section narrows as it gets closer to the top.

The Gateway Arch sits on the west bank of the Mississippi River at the spot where St. Louis was founded. At 630 feet high, it's both the tallest man-made monument in the United States and the tallest arch in the world. It has been called "a soaring curve in the sky that links the rich heritage of yesterday with the richer future of tomorrow."

The stainless steel structure was designed by Finnish-American architect Eero Saarinen in 1947. Construction began on February 12, 1963. The monument was completed on October 28, 1965. The Gateway Arch opened to the public on June 10, 1967. Since its opening, more than 130 million people have visited the Gateway Arch.

Travel Safety Tips

- Join the Buckle Up-Phone Down Movement. The challenge is simple: when you get into any vehicle, buckle up your seat belt. If you are a driver, put the cellphone down. Turn it off if you have to. No texting and no talking unless hands free.
- Always wear a seat belt. When unbelted, your odds of being killed in a crash are 1 in 30. When wearing a seat belt, the odds are 1 in 1,237.
- Slow down and exercise caution in work zones. Hitting a highway worker with your vehicle could cost \$10,000, as well as a lost license for a year.
- Missouri law requires drivers to slow down or move over (when safe to do so) when approaching emergency or maintenance vehicles working on the highways.
- If you're involved in a minor, non-injury traffic crash, state law requires you to move your vehicle off the road to keep traffic from backing up.

