

Missouri Department of Transportation

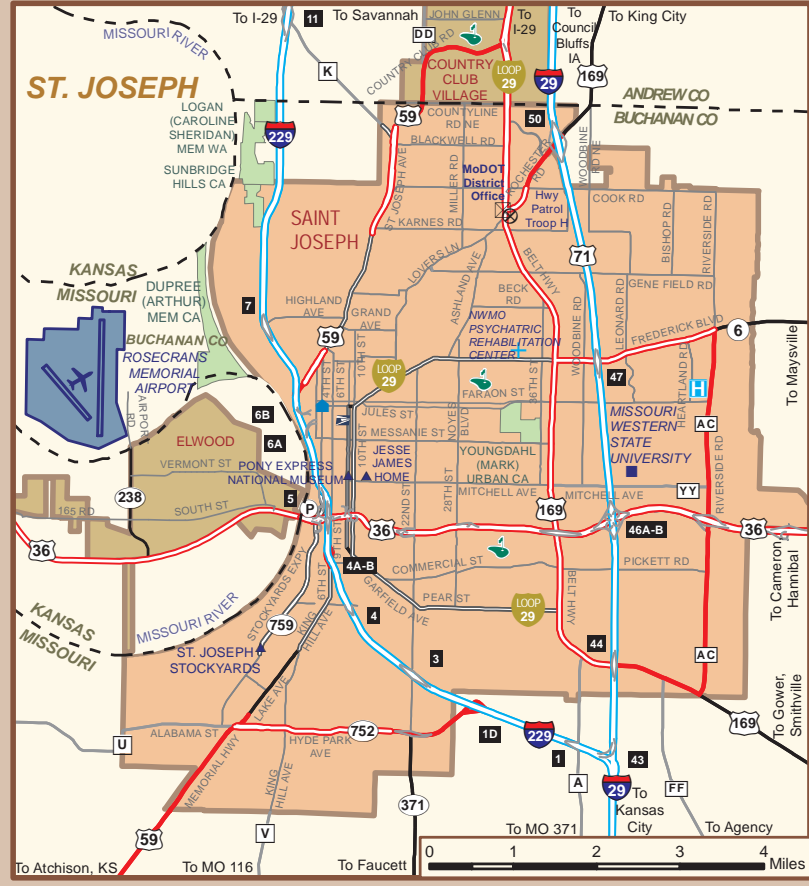
Highways and Transportation Commission 573-751-2824

Gregg C. Smith, Chair
 Michael B. Pace, Vice Chair
 Michael T. Waters, Jr.
 John W. Briscoe
 Robert G. Brinkmann
 Terry L. Ecker

Patrick K. McKenna, Director
 573-751-4022
 www.modot.org
 PO Box 270
 Jefferson City, Missouri 65102

Customer Service 888-ASK-MODOT
 Toll Free in Missouri 888-275-6636
 Highway Safety 800-800-2358
 Oversize Overweight Permits 866-831-6277
 Motor Carrier Services 866-831-6277

MoDOT District Offices
 Northwest (St. Joseph) 816-587-2350
 Northeast (Hannibal) 573-248-2490
 Kansas City (Lee's Summit) 816-622-6500
 Central (Jefferson City) 573-751-3322
 St. Louis (Cheserfield) 314-275-1500
 Southwest (Springfield) 417-895-7600
 Southeast (Sikeston) 573-472-3333

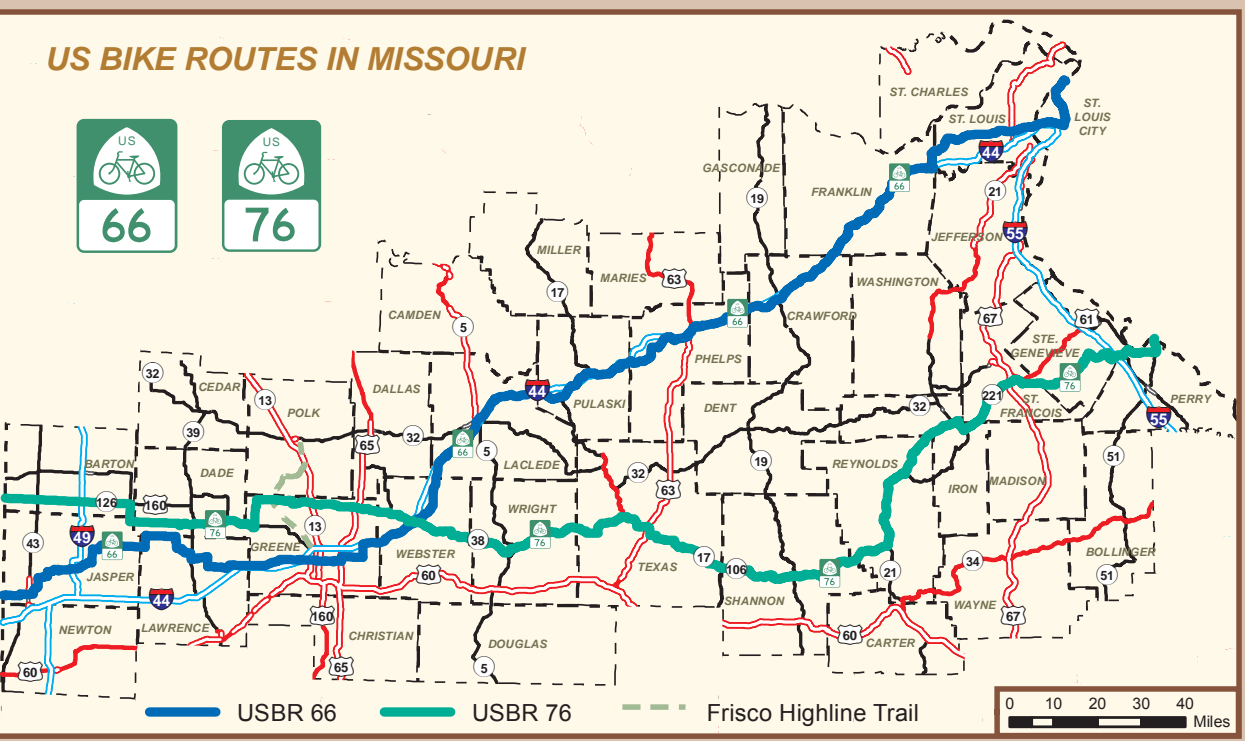
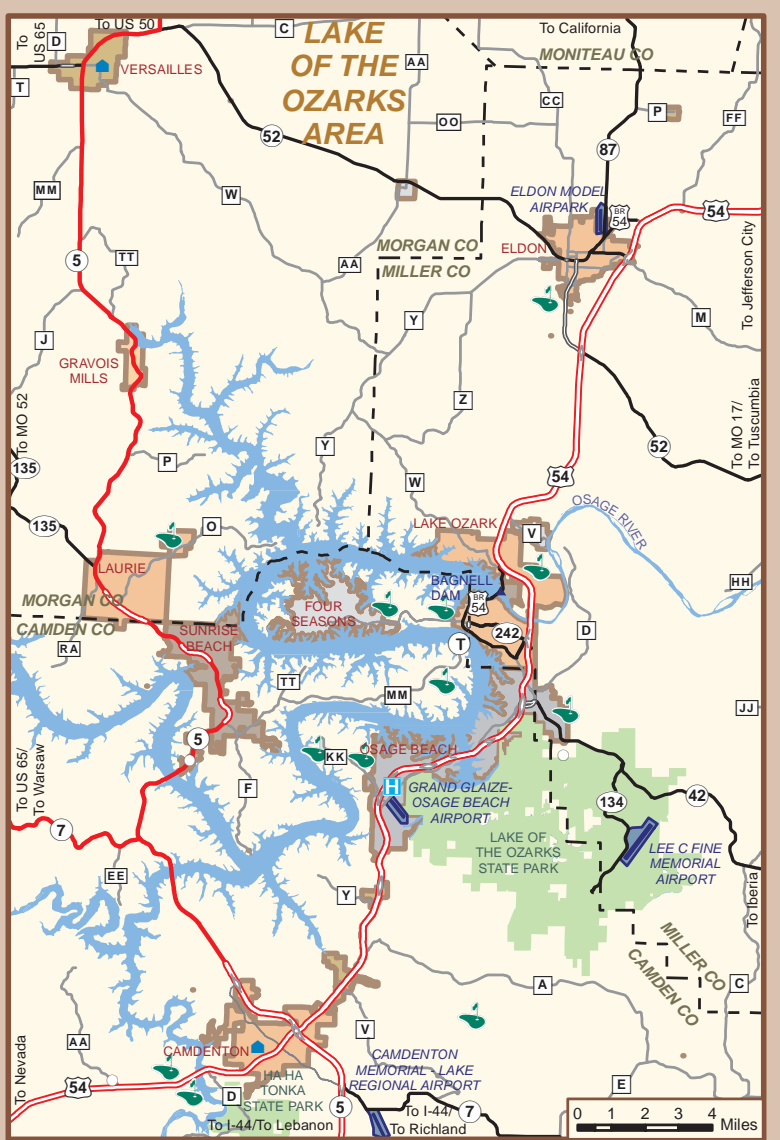
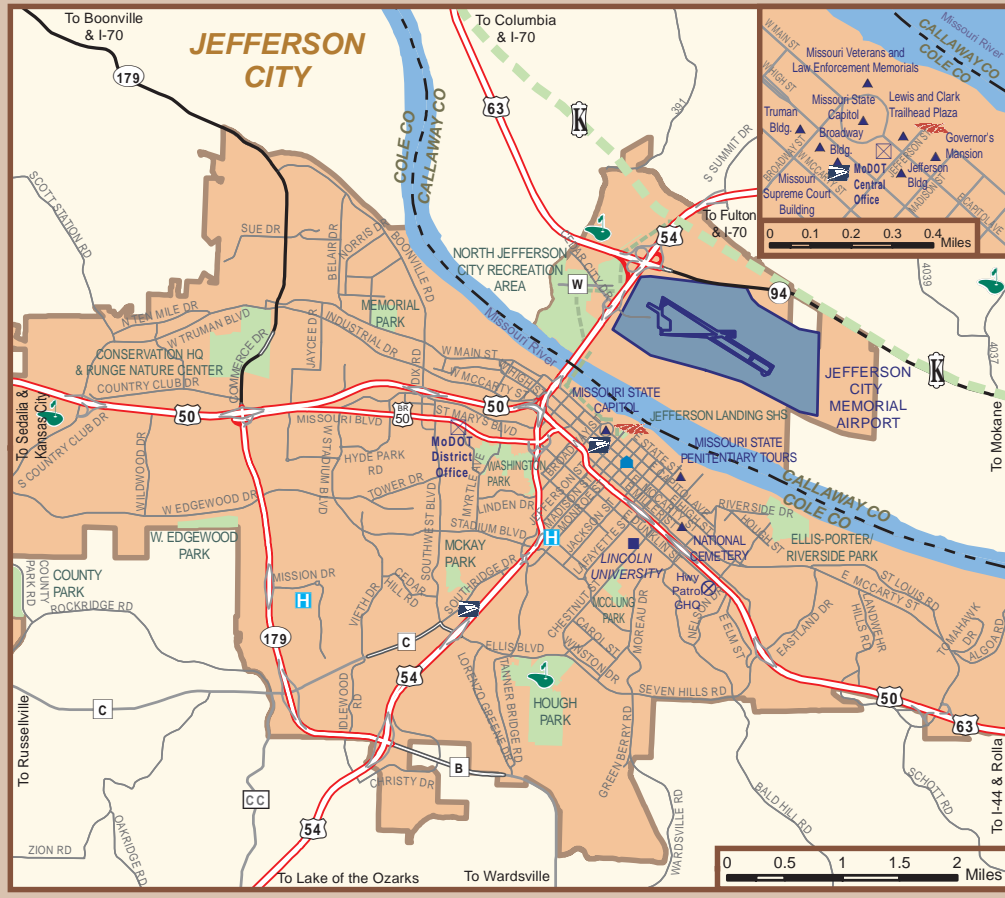
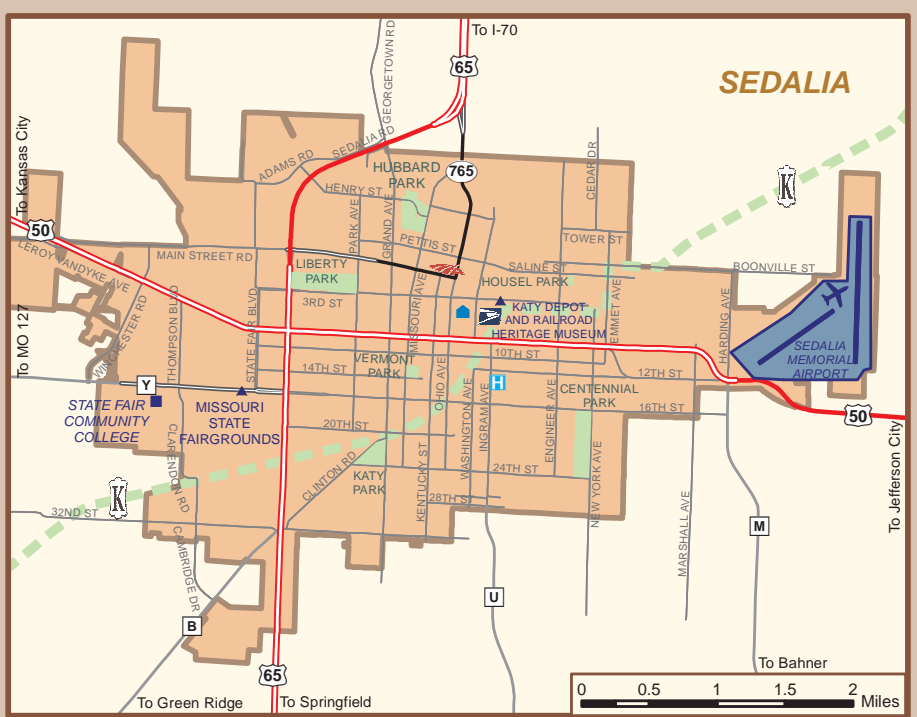
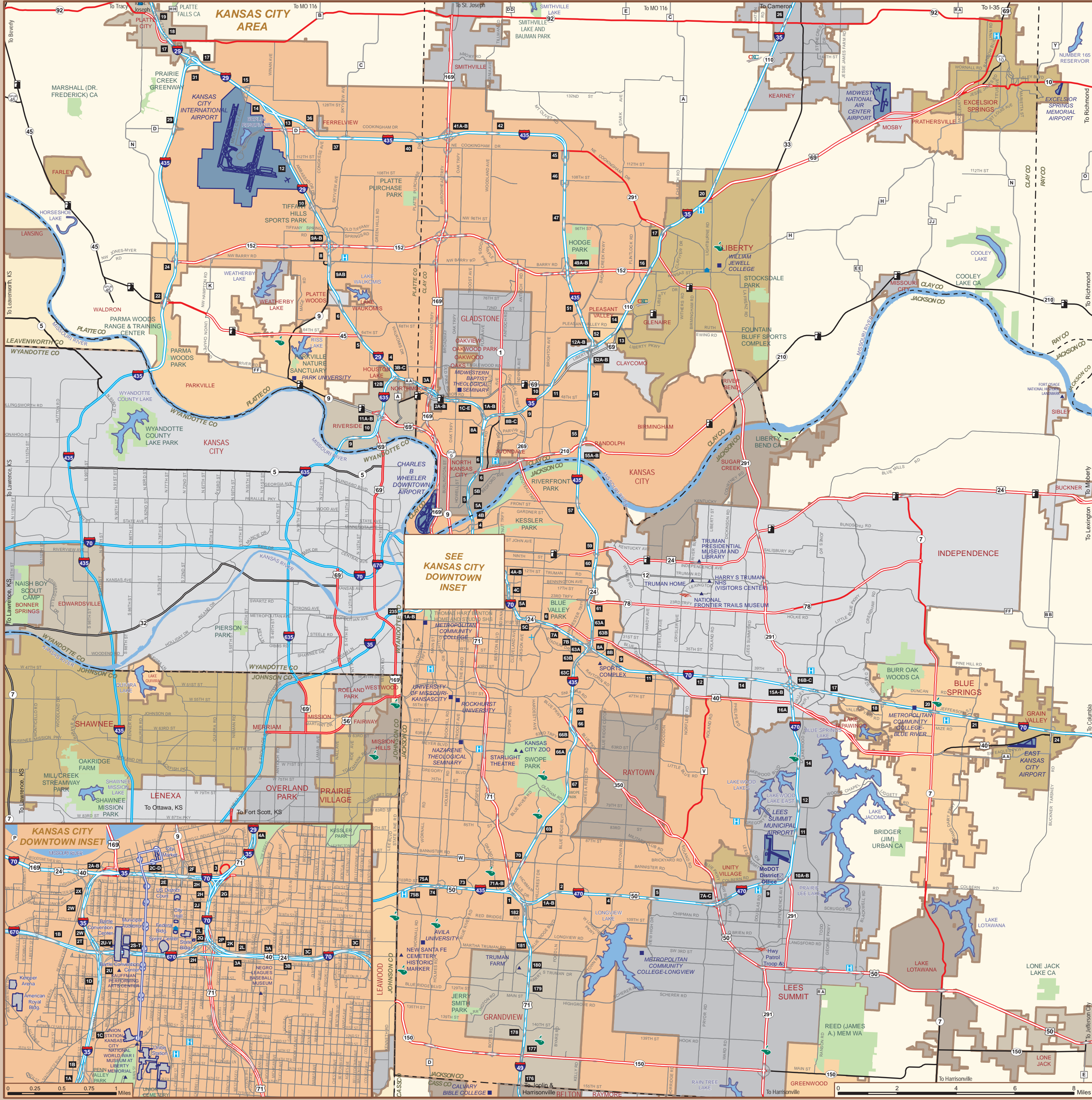
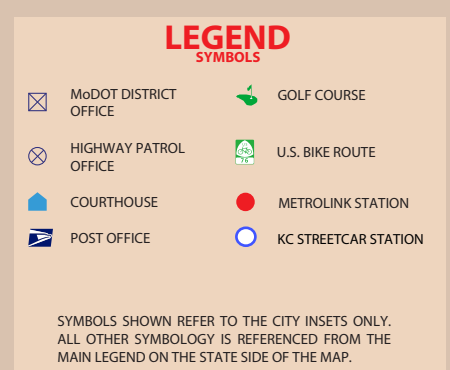
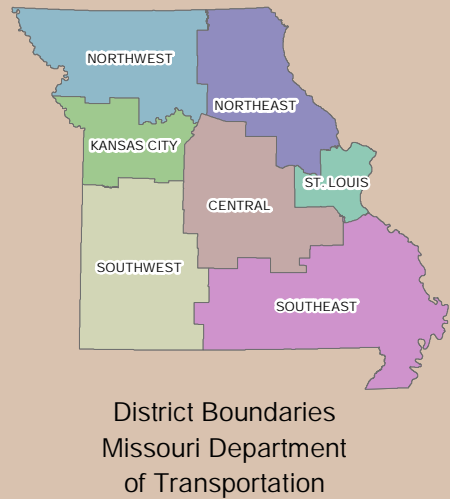
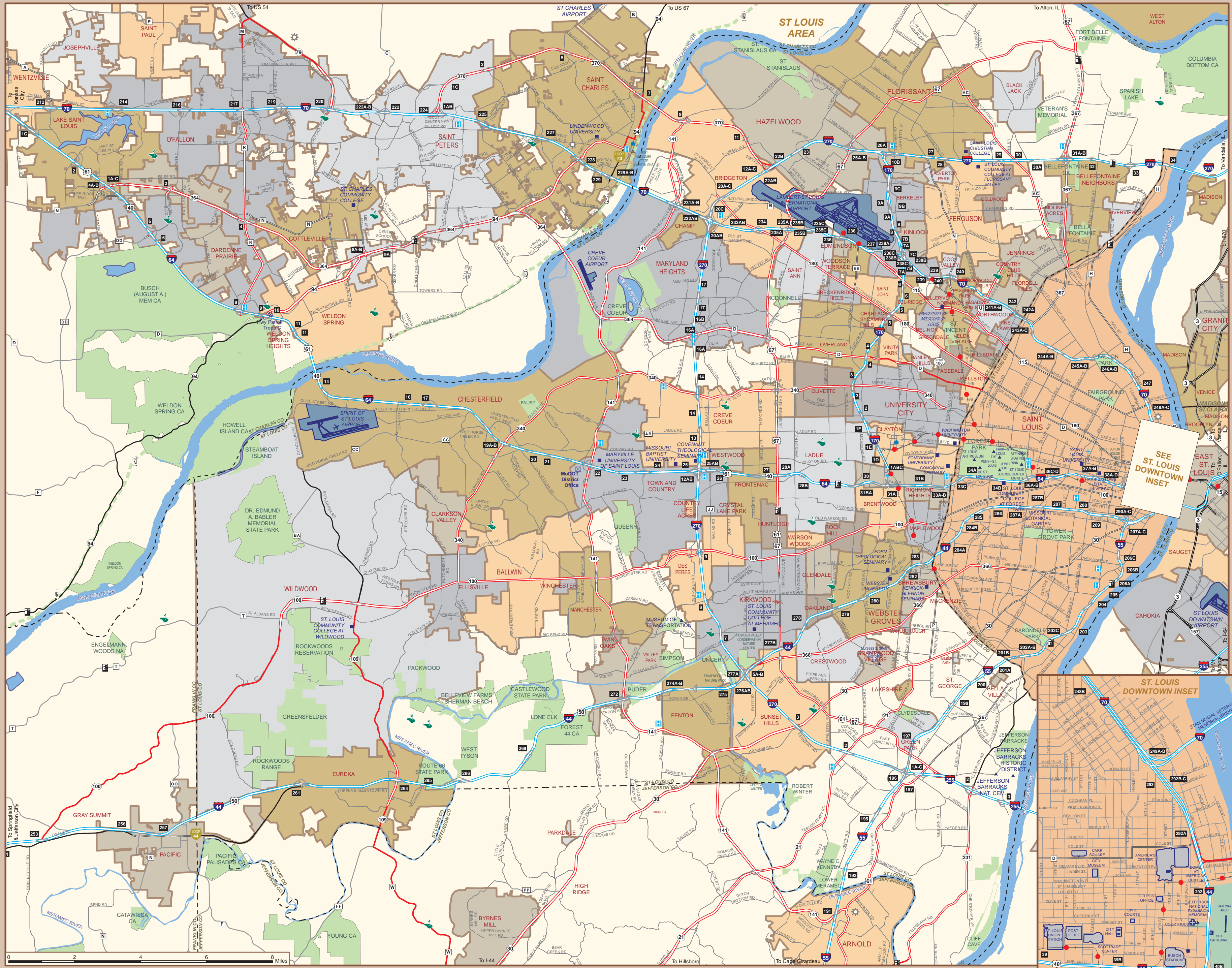
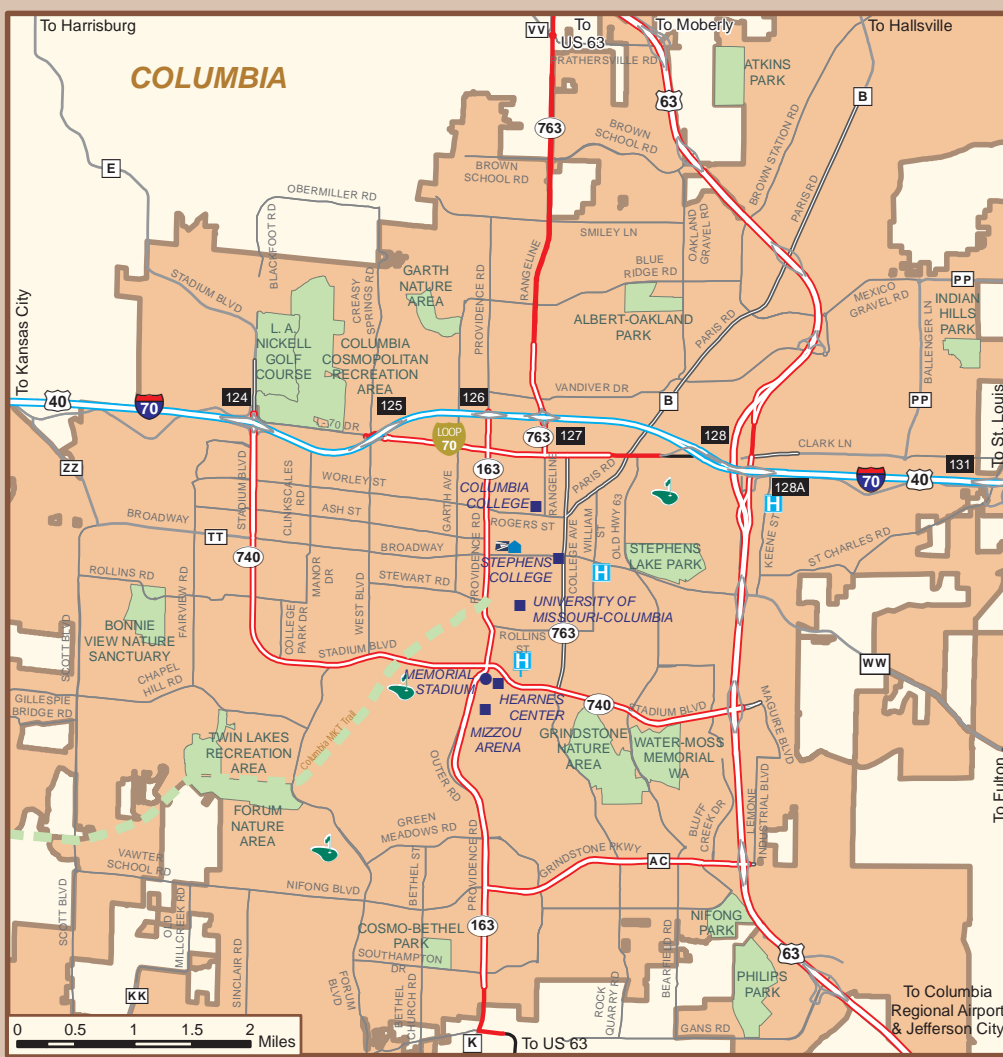


Missouri State Highway Patrol

Emergency 800-525-5555 or *55 on a cellular phone
 Non-emergency 573-751-3313

GHQ - Jefferson City 1510 E. Elm St. 573-751-3313
 Troop A - Lee's Summit 504 S.E. Blue Parkway 816-622-0800
 Troop B - Macon 308 Pine Crest Dr. 660-385-2132
 Troop C - Weldon Spring 891 Technology Dr. 636-300-2800
 Troop C - St. Louis 3180 Koch Rd. 314-416-2180
 Troop C - Park Hills 5268 Flat River Rd. 573-431-0166
 Troop D - Springfield 3131 E. Kearney St. 417-895-6868
 Troop D - Carthage 5182 S. Grand Ave. 417-359-1500
 Troop E - Poplar Bluff 4947 Highway 67 North 573-402-9500
 Troop E - Sikeston 105 Keystone Dr. 573-472-5200
 Troop F - Jefferson City 2920 N. Shamrock Rd. 573-751-1000
 Troop G - Willow Springs 1226 W. Bas. Route 6063 417-469-3121
 Troop H - St. Joseph 3525 N. Belt Highway 816-387-2345
 Troop I - Rolla 1301 Nagogami Rd. 573-368-2345

www.mshp.dps.missouri.gov



Traveler Information Map
 When traveling in severe or inclement weather, MoDOT's Traveler Information Map gives drivers an up-to-the-minute view of road conditions for state highways and interstates. Conditions for these routes are color-coded to give visitors the information they need at a glance and help them plan their routes accordingly. You'll also find traffic information, road closures and accident reports that might affect travel in the Show-Me state. Check it out at Traveler.MoDOT.gov or download the app from iTunes or Google Play.

Travel Safety Tips

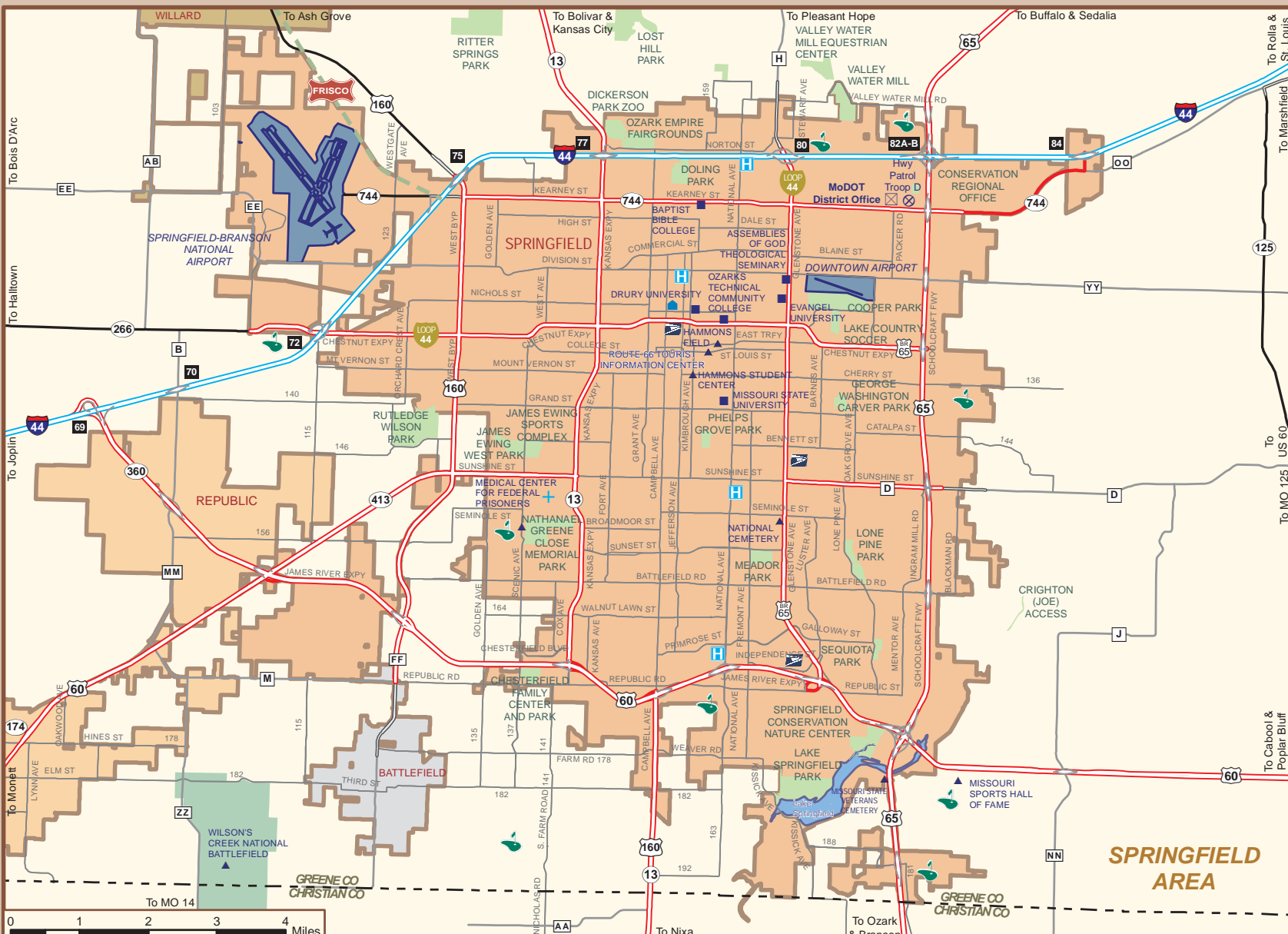
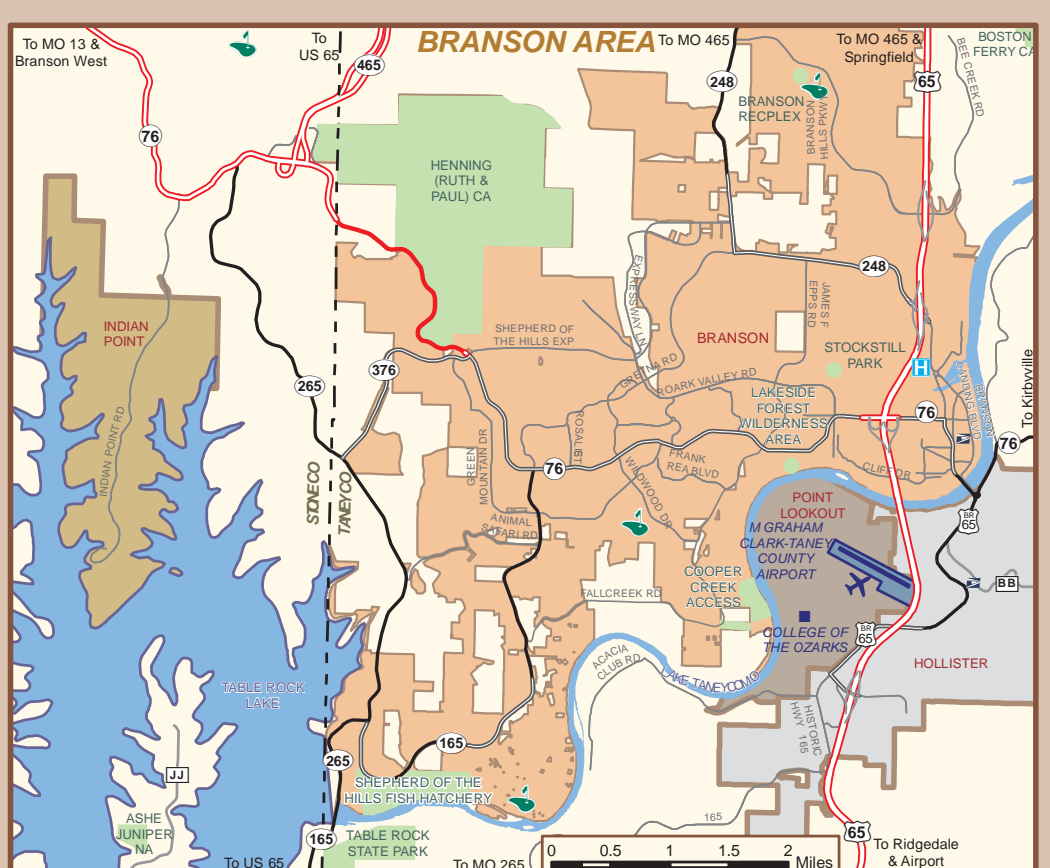
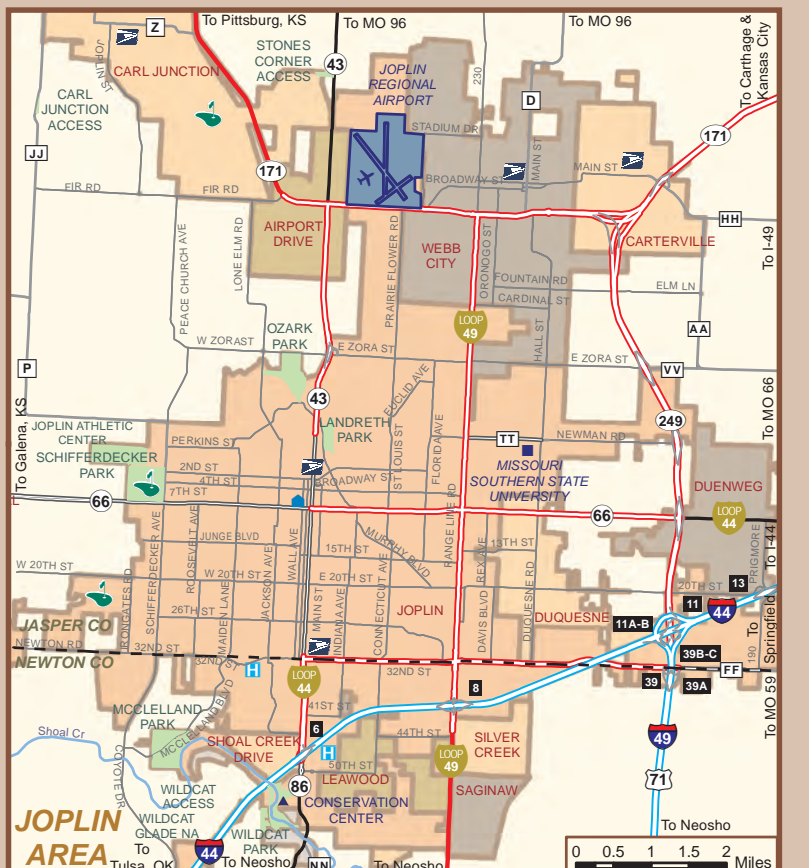
- Buckle Up Phone Down is a safety campaign developed to give drivers and their passengers incentive to potentially save their own lives on Missouri roadways. The challenge is simple: when you get into any vehicle, buckle up your safety belt. If you're driving, put down your cellphone. Turn it off if you have to.
- Since 2014, cellphone related crashes in Missouri have increased by 35 percent, with nearly 2,600 crashes in 2017.
- An AT&T survey revealed that nearly nine out of 10 people engage in smartphone activities while driving. And it's not just younger drivers—about 70 percent of drivers using cellphones were 22 or older.
- From 2015 to 2017, 63 percent of all drivers and passengers killed in crashes were not wearing safety belts.
- Slow down and exercise caution in work zones. We all want to go home safely.
- When you see emergency or maintenance vehicles approaching, slow down and pull over when it is safe to do so. It's the law.
- Turn on your headlights whenever you're driving in rain, sleet or snow that requires the use of your windshield wipers.



Citizen's Guide to Transportation Funding
 The Citizen's Guide to Transportation Funding takes the complex issues of the state's transportation revenue, expenditures, system condition and unfunded needs and explains them in clear and easy-to-understand terms. For example, many citizens don't know that the state shares funds with cities, counties, and other state agencies. When all is said and done only about 60 percent of revenue goes back to the state system. Transportation is funded from motor fuel taxes, motor vehicle sales taxes and motor vehicle registration and driver license fees. At MoDOT.org, you can select one of two interactive online calculators to determine your personal contribution to the Missouri highway system using a combination of these sources.

The **Personal Cost Calculator** assesses approximately how much you contribute in taxes and fees to support the transportation system you use (www2.modot.org/TransportationDollars).

The **Potential Revenue Options Calculator** reveals what future investment in transportation could do for Missourians and the average monthly cost per driver (www2.modot.org/PotentialRevenueOptionsCalculator).



Travel Resources

Department of Transportation	Traveler Information Map www.traveler.modot.org	Mobile version available in the app store
Division of Tourism	To order a Missouri Travel Guide www.visitmo.com	800-519-4800
Department of Revenue	Driver & Motor Vehicle Licensing www.dor.mo.gov	573-751-4600
Department of Conservation	Nature Areas, Hunting & Fishing www.mdc.mo.gov	573-751-4115
Department of Natural Resources	Park & Historic Site Information www.mostatparks.com	800-334-6946 800-379-2419 (TDD)
Antrak	Tickets & Information www.antrak.com	800-USA-RAIL 800-872-7245
Water Patrol Division	News & Information www.mshp.dps.missouri.gov/MSPHWaterPatrol	573-751-3313
Relay Missouri	Provides full telephone accessibility to the deaf, hard of hearing, deaf-blind, and speech disabled	Dial 711 or 800-735-2966 (TTY) 866-735-2460 (Voice)

