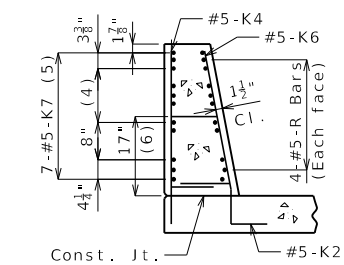
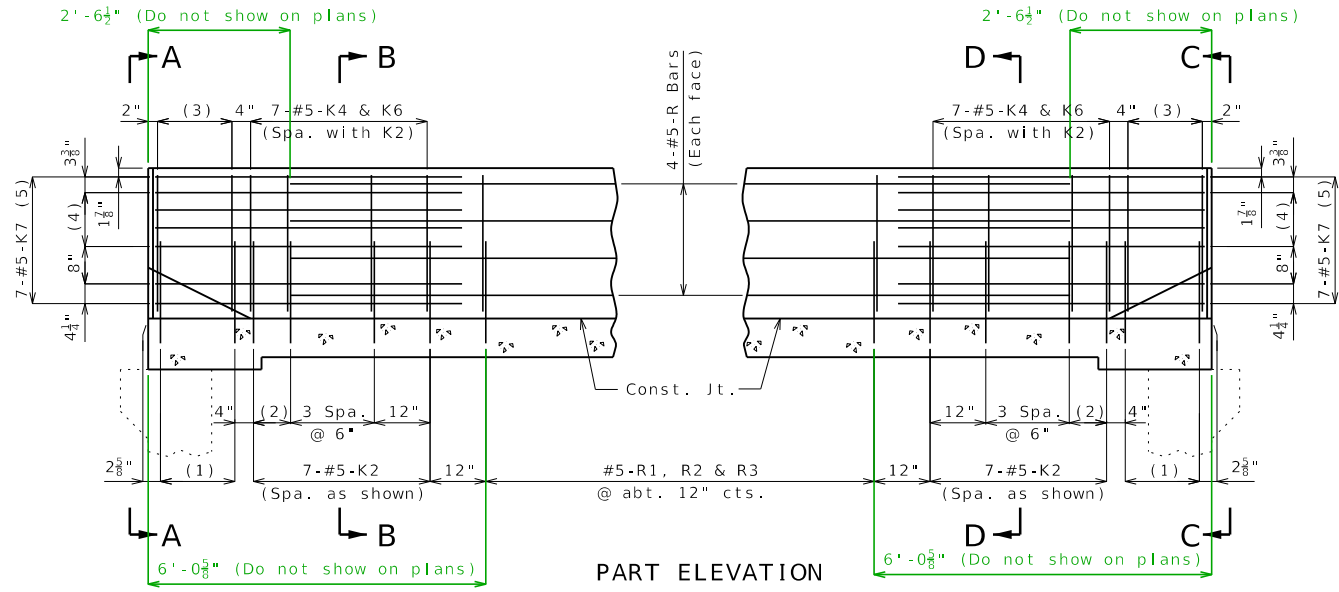


ELEVATION A-A

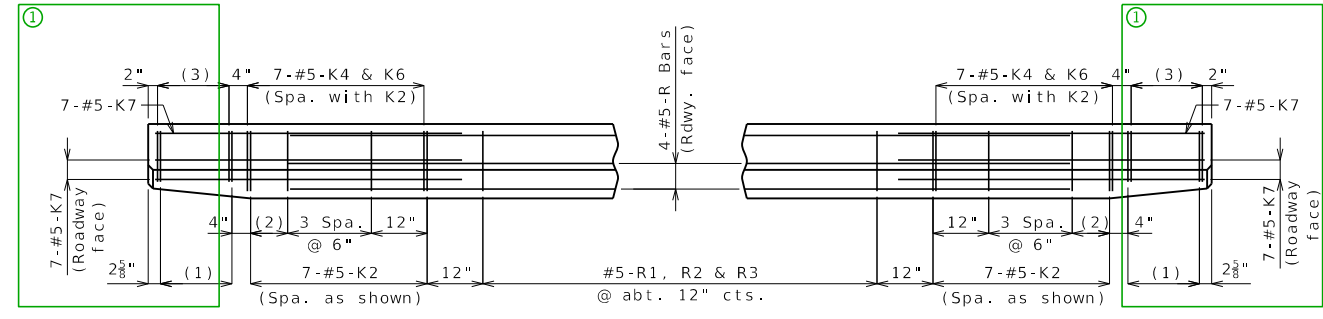


SECTION B-B



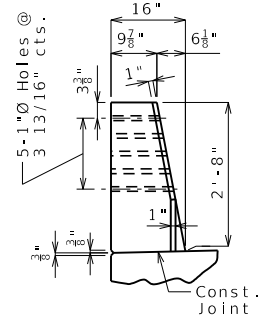
PART ELEVATION

- (1) 5-#5-K1 @ 4" cts.
- (2) 2 Spaces @ 4"
- (3) 5-#5-K4 and 5-#5-K5, spaced with K1
- (4) 3 Spaces @ 3 3/8"
- (5) Spaced as shown, each face
- (6) To top of bar

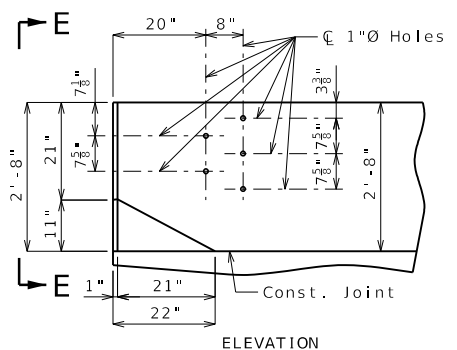


PART PLAN

Standard Drawing Guidance: (Do not show on plans)  
 ① Show part of existing end bent.

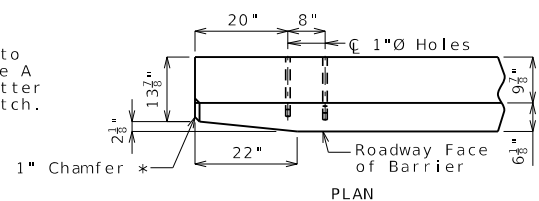


ELEVATION E-E



ELEVATION

\* Transition to zero at Type A curb for gutter lines to match.



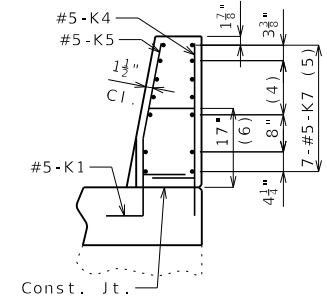
PLAN

DETAILS OF GUARD RAIL ATTACHMENT

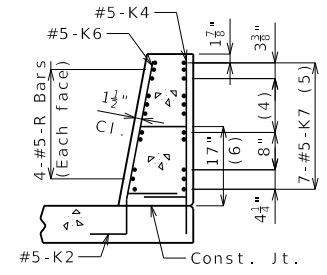
**General Notes:**  
 Concrete traffic barrier delineators shall be placed on top of the barrier as shown on Missouri Standard Plan 617.10 and in accordance with Sec 617. Delineators on bridges with two-lane, two-way traffic shall have retroreflective sheeting on both sides. Concrete traffic barrier delineators will be considered completely covered by the contract unit price for Type H Barrier.

**Reinforcing Steel:**  
 Minimum clearance to reinforcing steel shall be 1 1/2".  
 Use a minimum lap of 3'-1" between K7 bars and R bars.

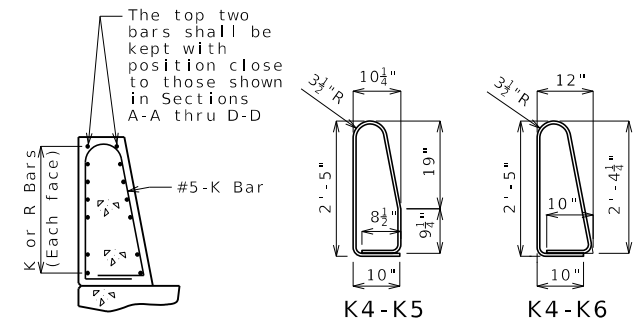
**TYPE H BARRIER AT END BENTS**  
 (Left barrier shown, right barrier similar)



ELEVATION C-C



SECTION D-D



**PERMISSIBLE ALTERNATE SHAPES**  
 (Other K bars not shown for clarity)

The K4-K5 and K4-K6 bar combination may be furnished as one bar as shown, at the contractor's option.

All dimensions are out to out.

Detailed Checked

Note: This drawing is not to scale. Follow dimensions.

Sheet No. of

DATE PREPARED	
10/13/2023	
ROUTE	STATE
	MO
DISTRICT	SHEET NO.
	BAR10
COUNTY	
JOB NO.	
CONTRACT ID.	
PROJECT NO.	
BRIDGE NO.	

DESCRIPTION

DATE

MISSOURI HIGHWAYS AND TRANSPORTATION COMMISSION



105 WEST CAPITOL  
 JEFFERSON CITY, MO 65102  
 1-888-ASK-MODOT (1-888-275-6636)