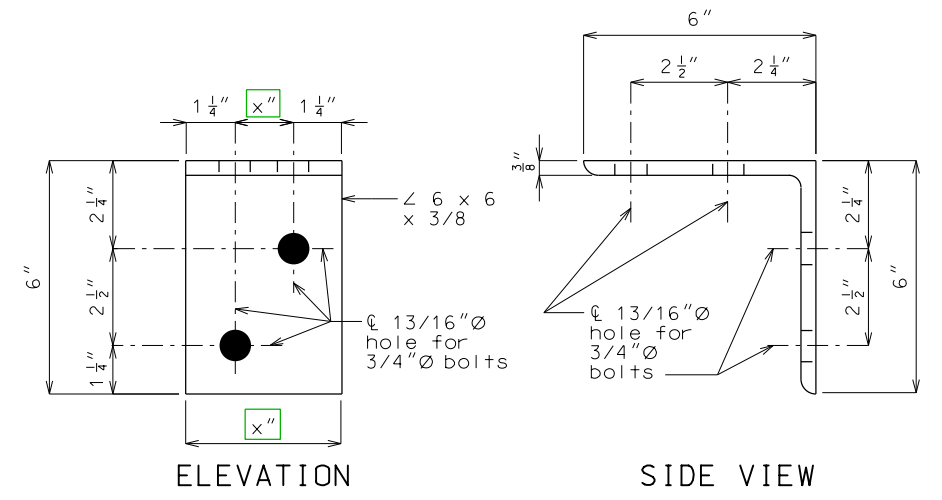


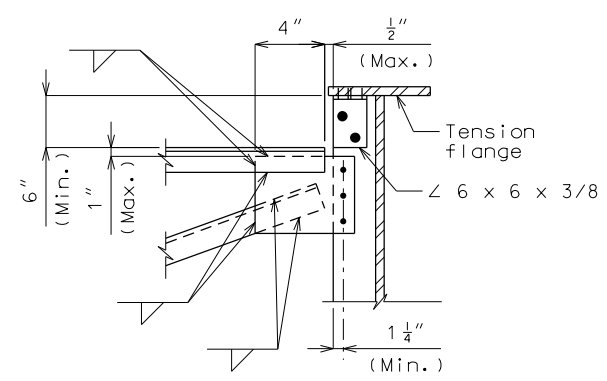
TYPICAL PART SECTION SHOWING INTERMEDIATE DIAPHRAGMS BOTTOM FLANGE IN TENSION

TYPICAL PART SECTION SHOWING CROSS FRAMES AND INTERMEDIATE DIAPHRAGMS TOP FLANGE IN TENSION

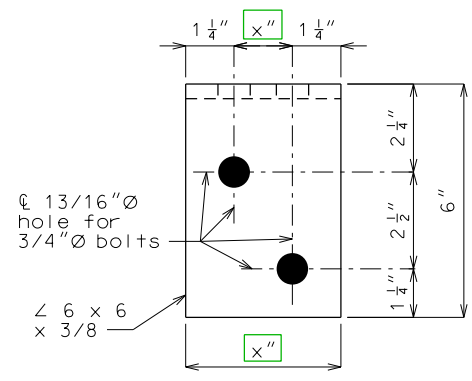


ELEVATION

SIDE VIEW



DETAIL D (Top flange shown, bottom flange similar.)



PLAN

DETAIL OF FLANGE CONNECTION ANGLE

Use these alternate details if Flange Connection Angle is required by design

- ② Use Type 3 for weathering steel bolted connections and Type 1 for painted or galvanized steel connections.

Note: Bolts shall be 3/4-inch diameter ASTM F3125 Grade A325
 ② Type 1 Type 3 that connect the 6 x 6 x 3/8 angle to the top flange and placed so the nut is on the inside of flange (toward the web).