

ST. FRANCIS RIVER

ROUTES -
51 (A-C) (PART)
T
U (WW)
O
AA Part

012 SHEET 1 OF 12
BUTLER

RIPLEY COUNTY

T 24
T 23

COUNT

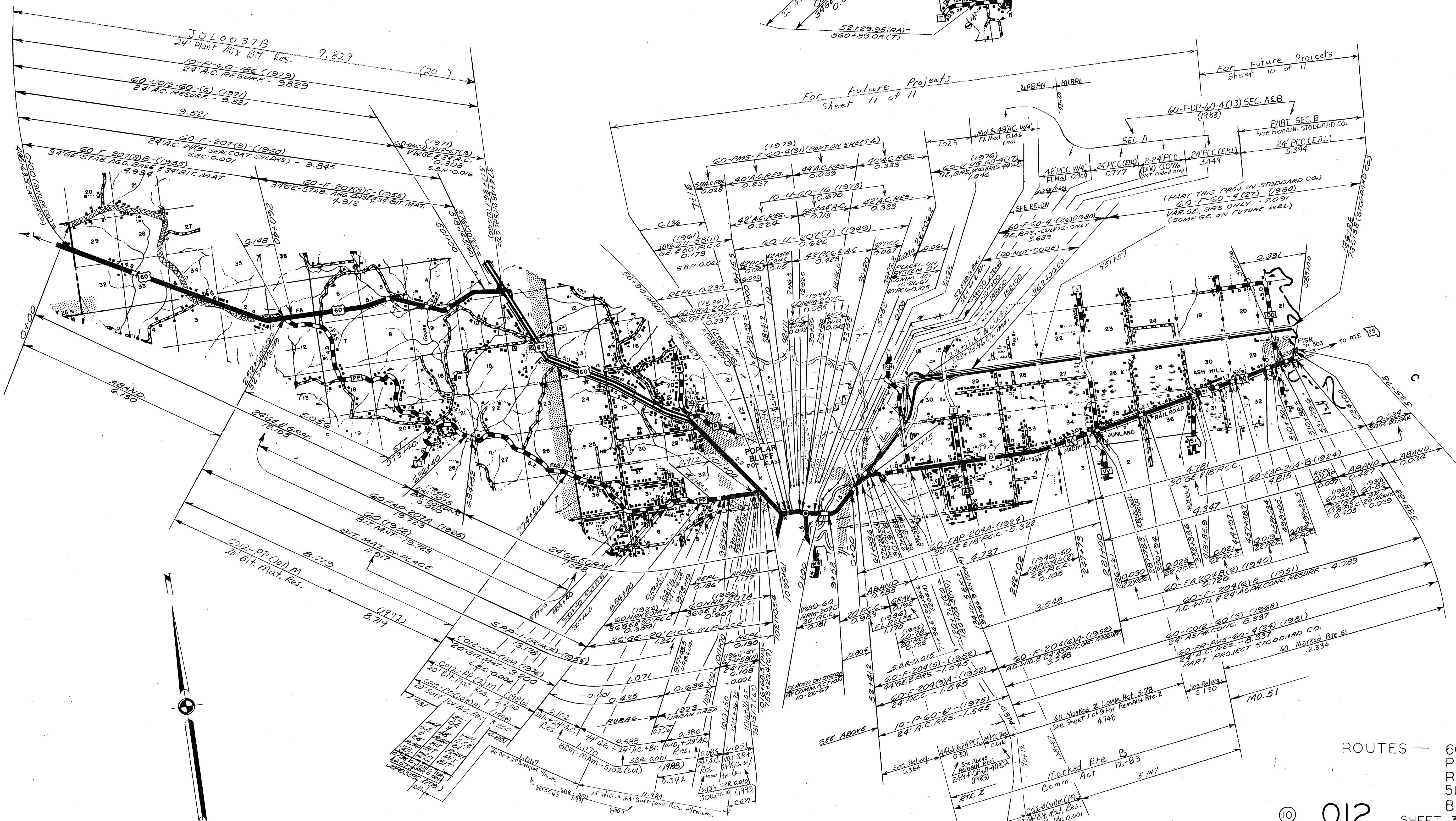
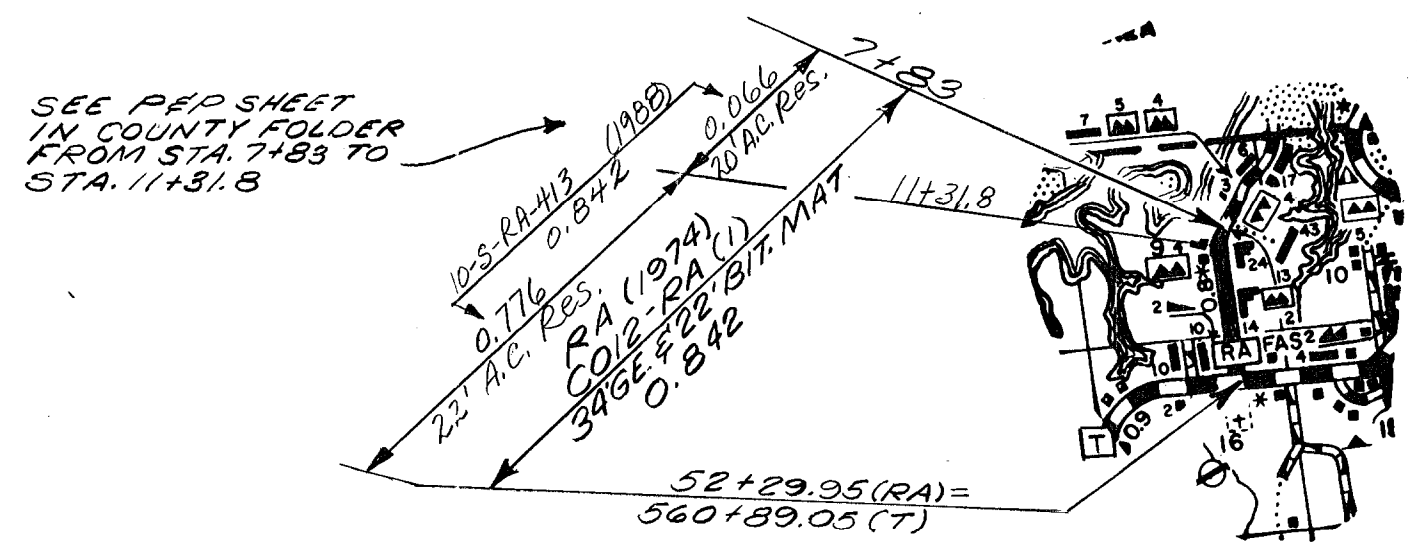
RIPLEY

T 22 N



ROUTES — 53
H
V
HH
MM

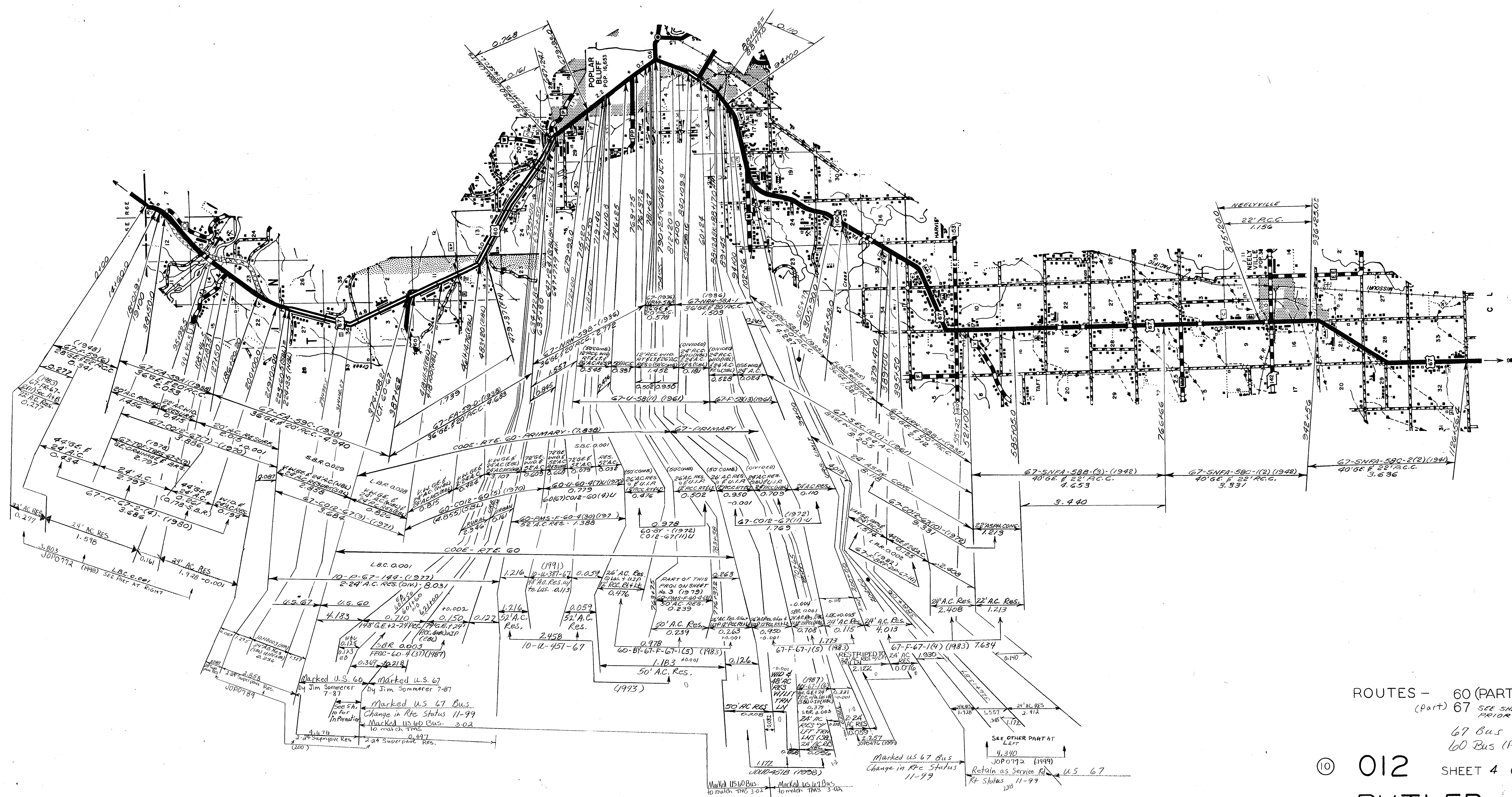
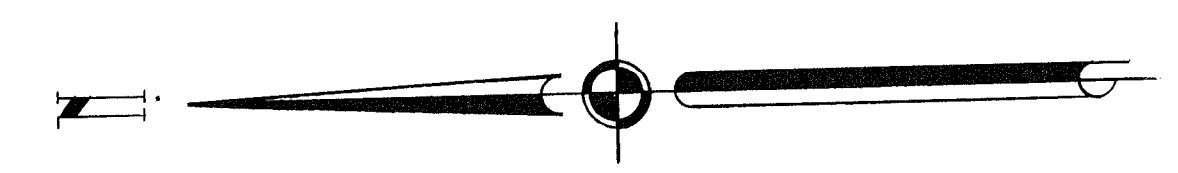
⑩ 012 SHEET 2 OF 12
BUTLER



ROUTES — 60 (PART)
 PP
 RA
 51 (PART)
 B

© 012 SHEET 3 OF 12

BUTLER



ROUTES - 60 (PART)
 (PART) 67 SEE SHEET NO. 5 FOR
 PRIOR DATA
 67 Bus (Part)
 60 Bus (Part)

012 SHEET 4 OF 12
 BUTLER

L.B.C. 0.001
 JOP0772 (1998) SEE PLAN AT RIGHT

Marked U.S. 60
 by Jim Sommerer
 7-87

Marked U.S. 67
 by Jim Sommerer
 7-87

Marked U.S. 67 Bus
 Change in Rte Status 11-99

Marked U.S. 60 Bus
 to match TMS 3-02

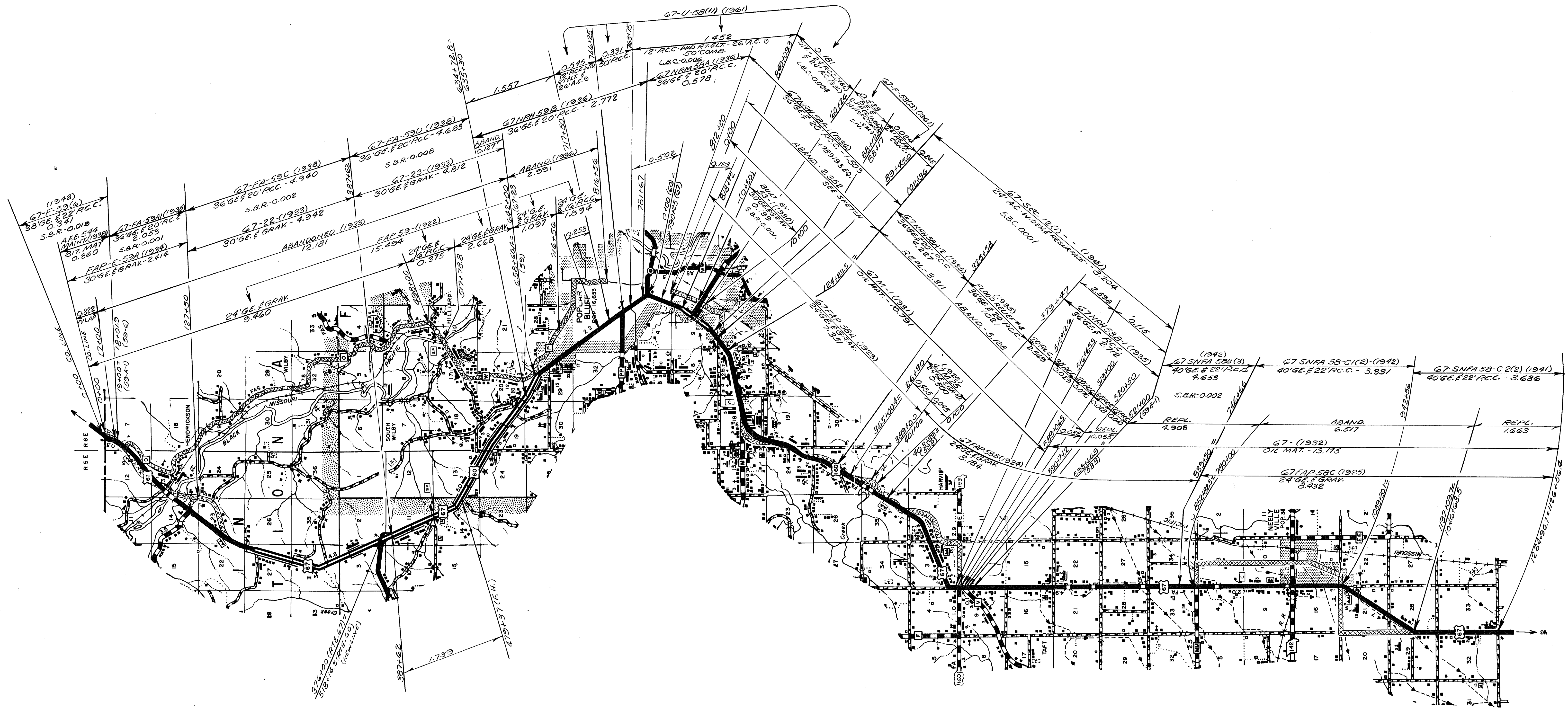
Marked U.S. 67 Bus
 Change in Rte Status
 11-99

Retain as Service Rd
 U.S. 67
 11-99

SEE OTHER PART AT LEFT

Marked U.S. 60 Bus
 to match TMS 3-02

Marked U.S. 67 Bus
 to match TMS 3-02



ROUTE - 67
SEE SHEET 4 FOR
CURRENT DATA

© 012 SHEET 5 OF 12
BUTLER

RIPLEY

T 24 N
T 23 N



COUNTY

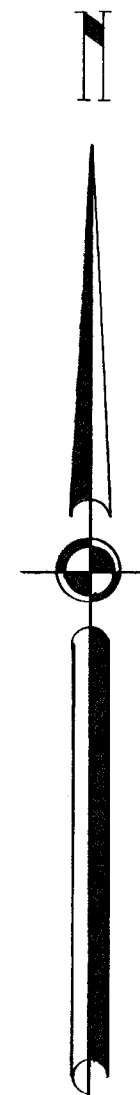
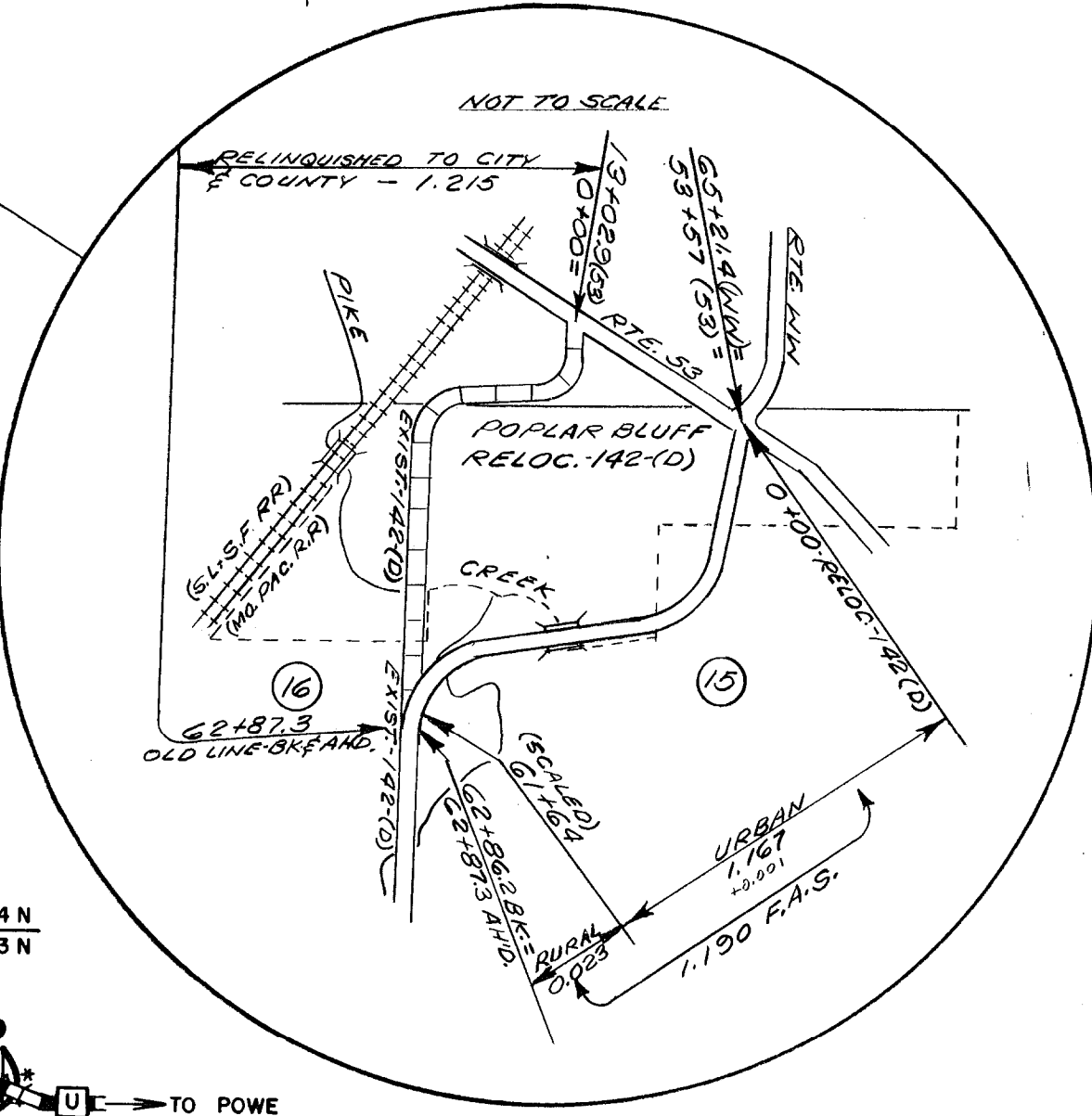
EY

TO DONIPHAN

TO POWE

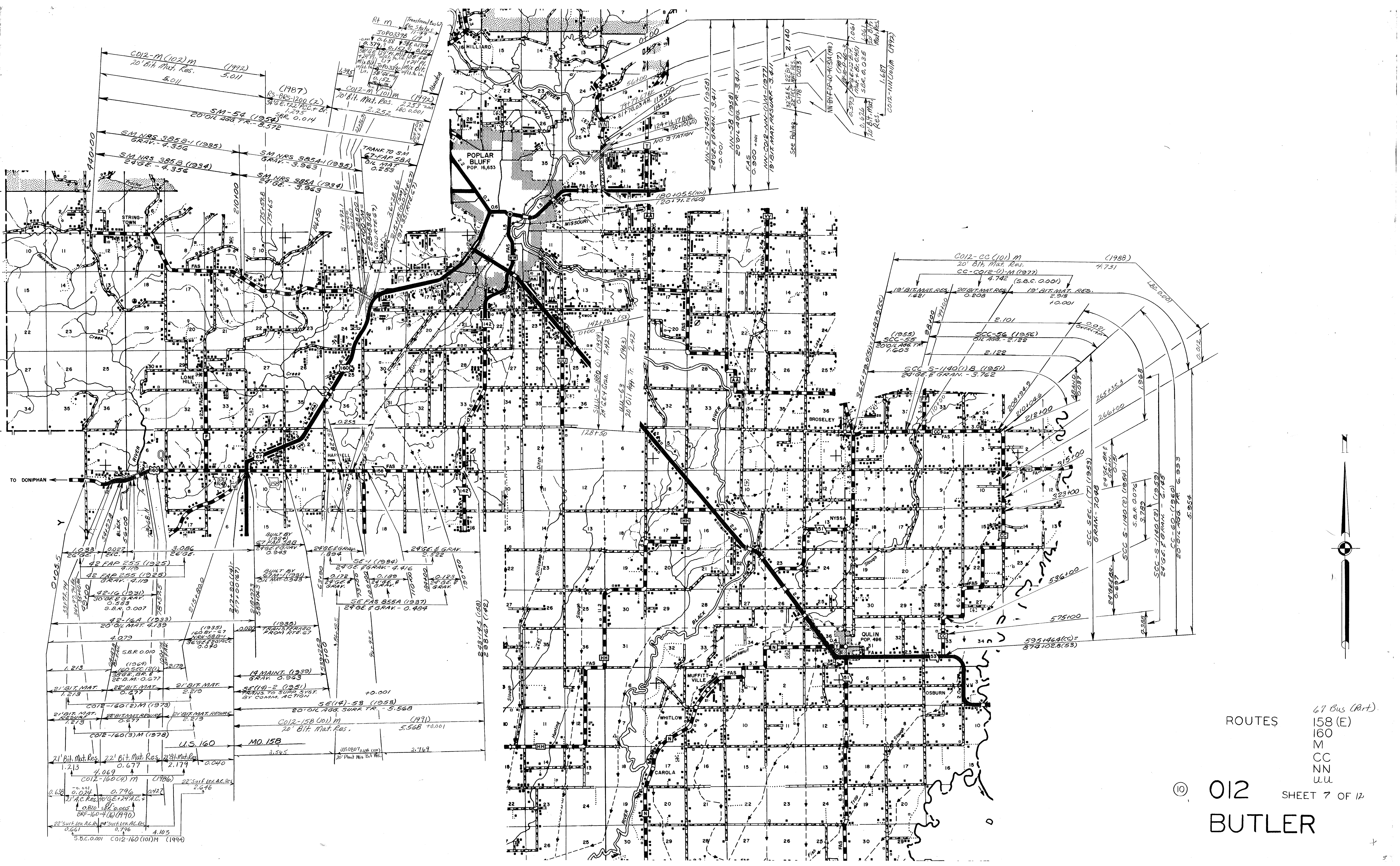
TO CAMPBELL

TO NAYLOR



ROUTES 142 (B-D-H)
BB

012 SHEET 6 OF 12
BUTLER



ROUTES

- 67 Bus (Art.)
- 158 (E)
- 160
- M
- CC
- NN
- UU

⑩ 012 SHEET 7 OF 12
 BUTLER



ROUTES — F
 P (Abandoned)
 W
 AA Part
 DD
 FF
 JJ
 TT

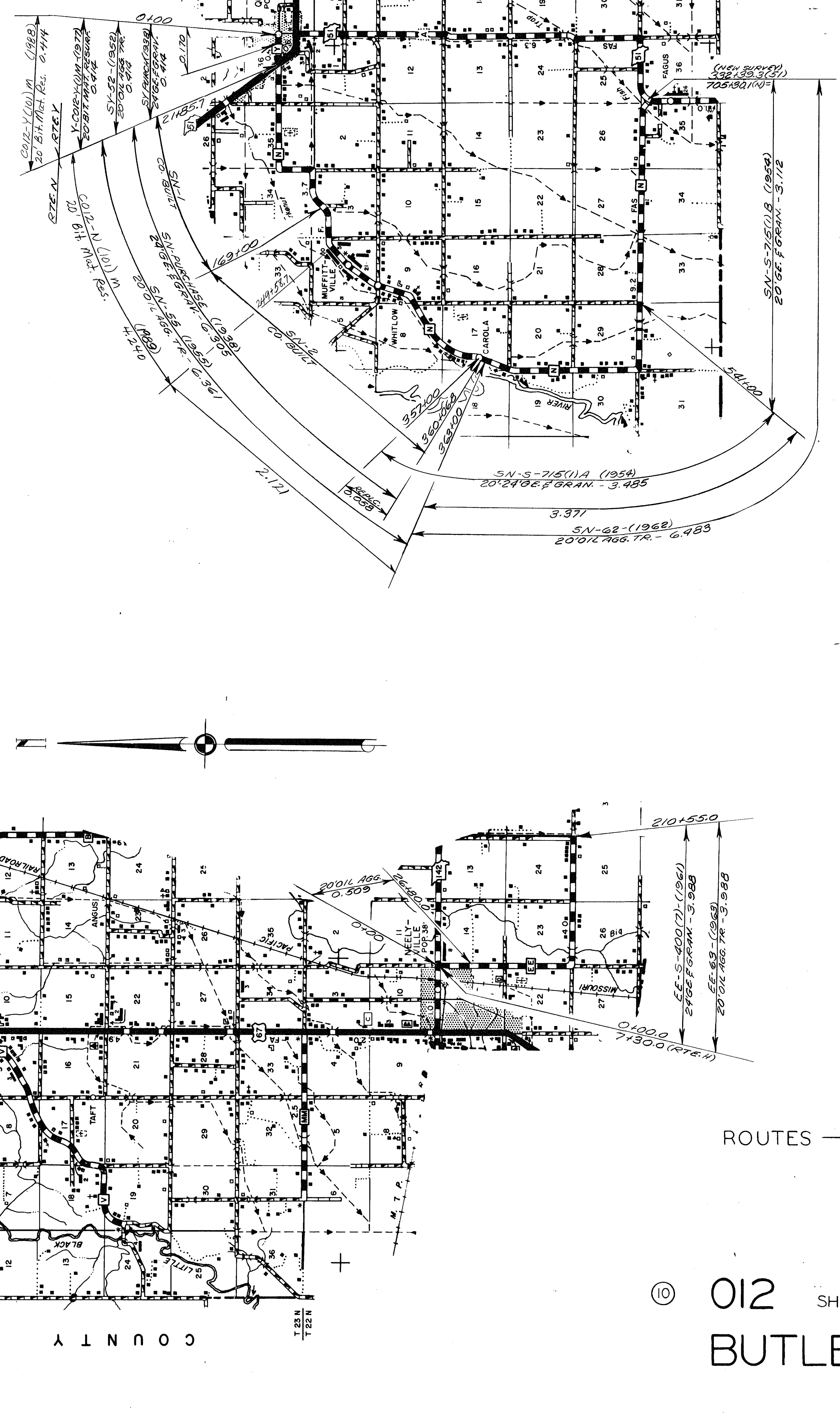
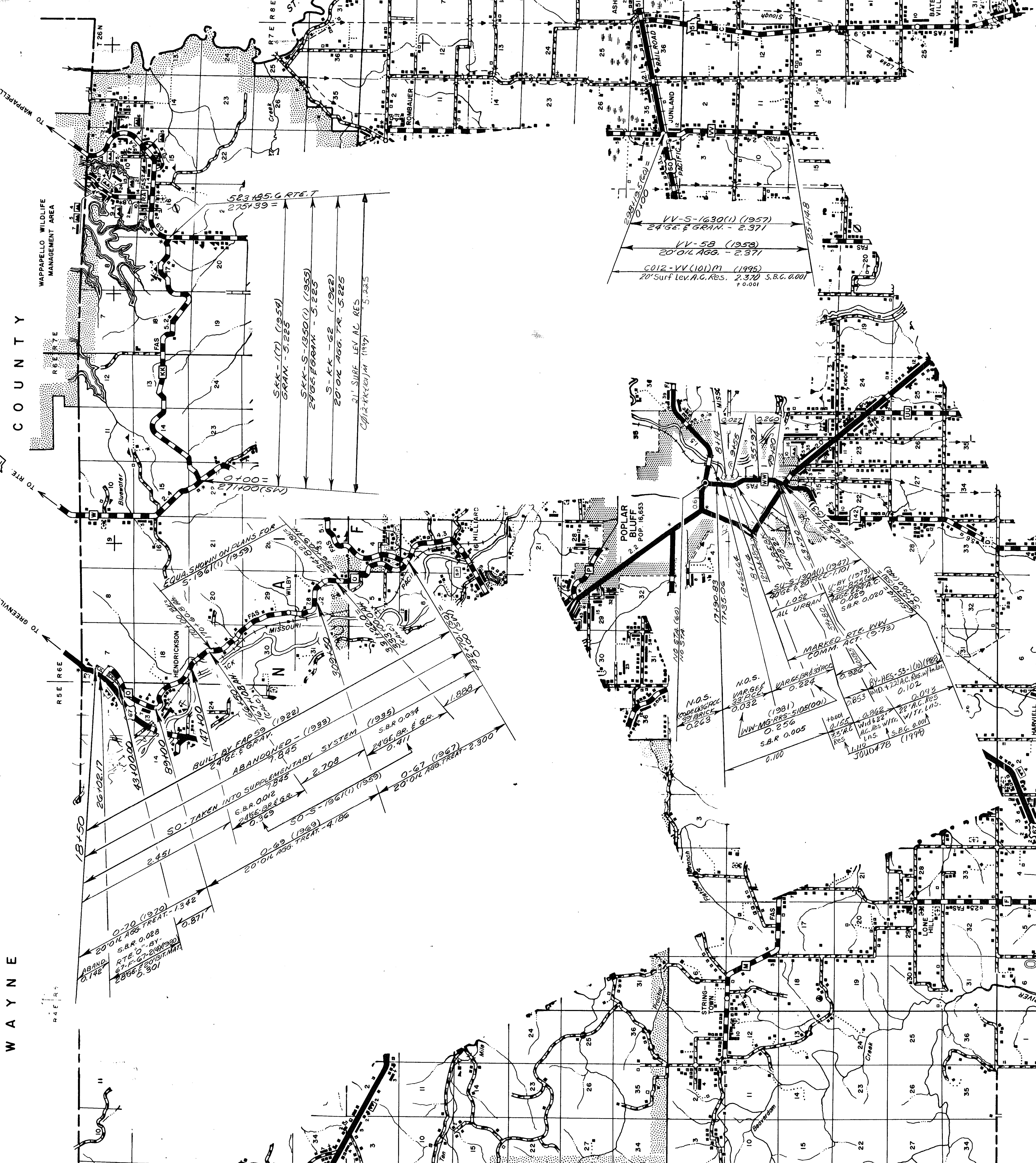
012 SHEET 8 OF 14
 BUTLER

WAYNE

COUNTY

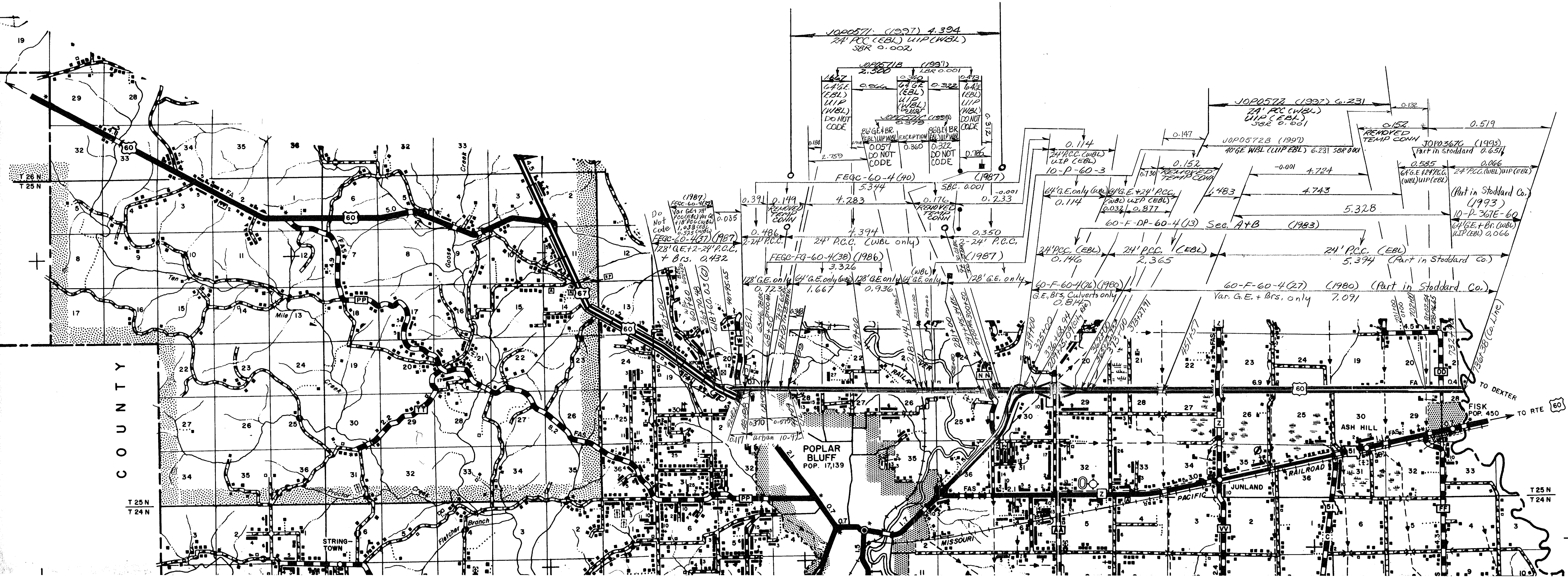
TO WAPPAPELLO

TO GREENVILLE



ROUTES —
 NO
 YE
 EE
 KK
 VV
 WW (U)

⑩ 012 SHEET 9 OF 12
 BUTLER

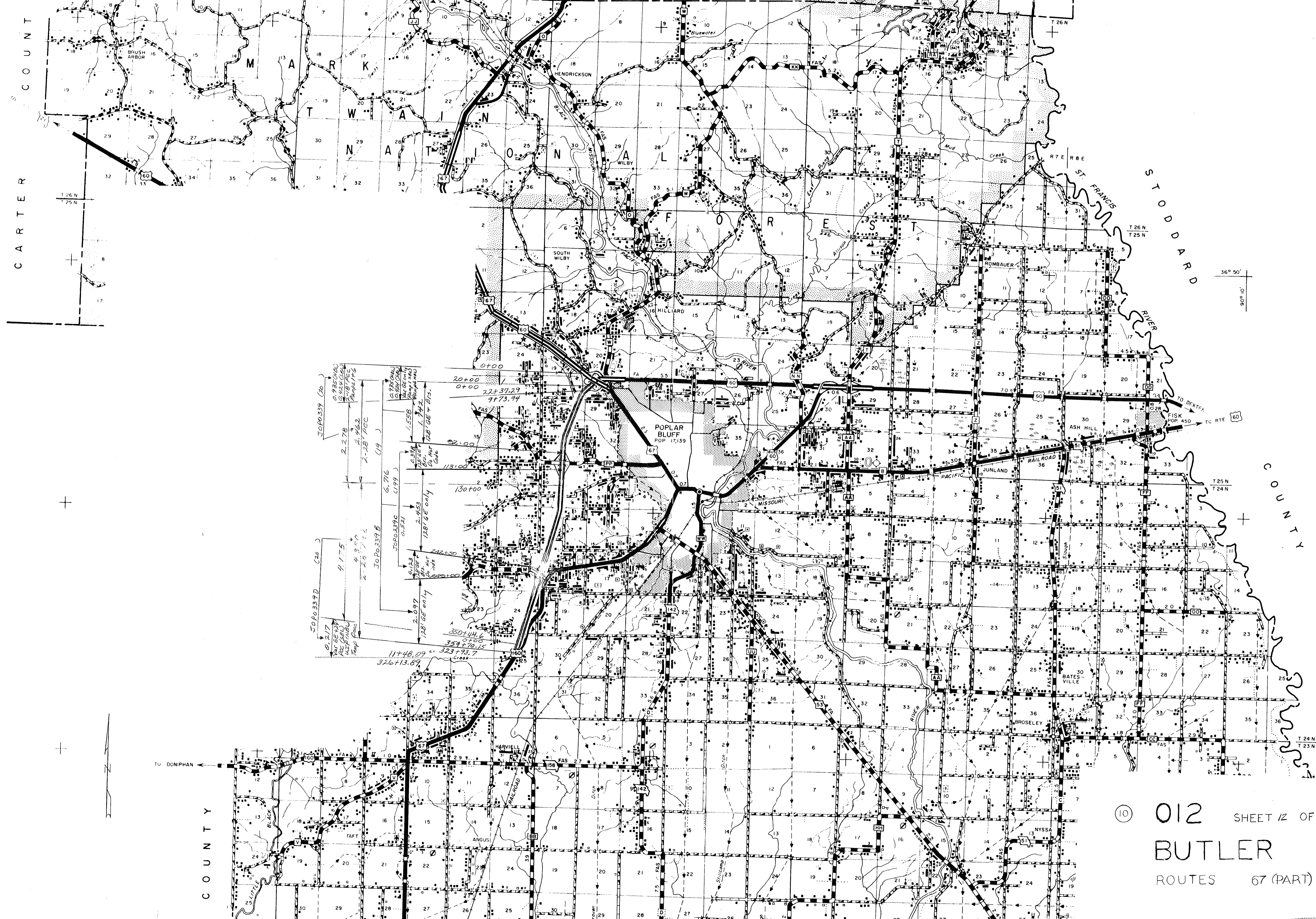


012 SHEET 10 OF 12
BUTLER

COUNTY

COUNTY

CARTER COUNTY



⑩ 012 SHEET 12 OF 12
 BUTLER
 ROUTES 67 (PART)