

Missouri Department of Transportation

Highways and Transportation Commission 573-751-2824

Michael T. Waters, Jr., Chair
John W. Brisson, Vice Chair
Gregg C. Smith
Robert G. Brinkmann
Terry L. Ecker
W. Dustin Boatwright

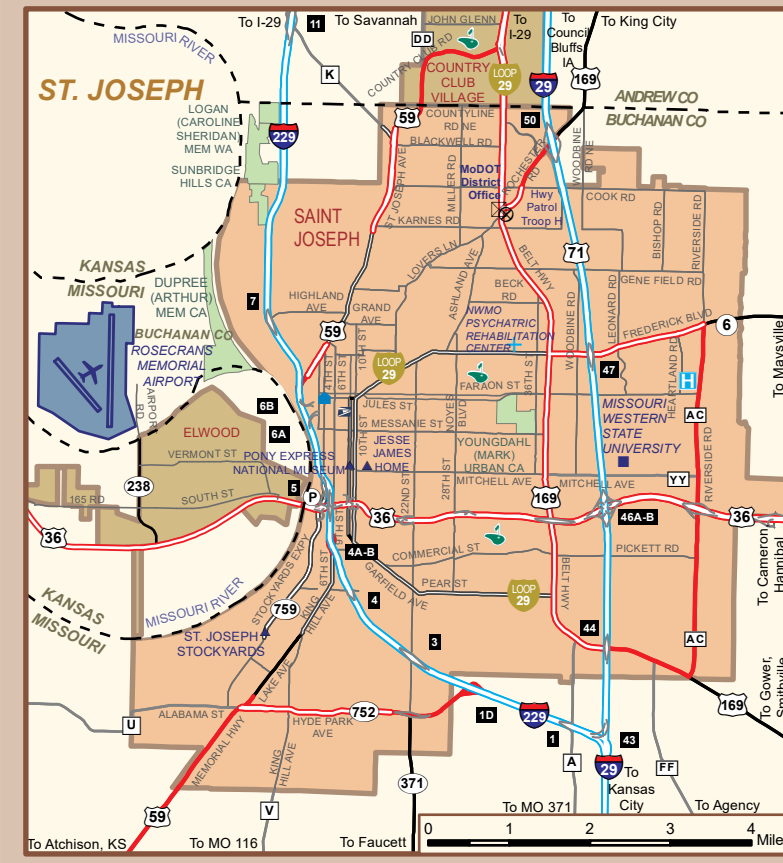
Oriek
New London
Clinton
Defiance
Elmo
Keosauqua

Patrick K. McKenna, Director 573-751-4622

MoDOT Central Office
PO Box 270
Jefferson City, Missouri 65102

Customer Service 888-ASK-MODOT
Toll Free in Missouri 888-275-6636
Highway Safety 800-800-2358
Oversize/Overweight Permits 866-831-6277
Motor Carrier Services 866-831-6277

MoDOT District Offices
Northwest (St. Joseph) 816-387-2350
Northeast (Hannibal) 573-248-2490
Kansas City (Lee's Summit) 816-622-6500
Central (Jefferson City) 573-751-3322
St. Louis (Chesterfield) 314-275-1500
Southwest (Springfield) 417-895-7000
Southeast (Sikeston) 573-472-5333

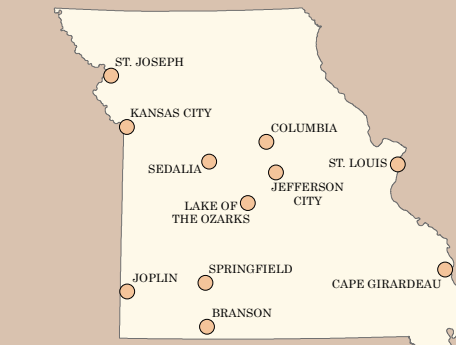
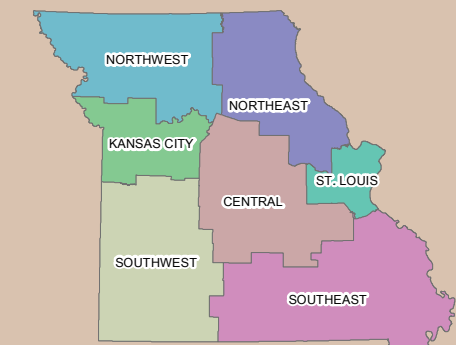
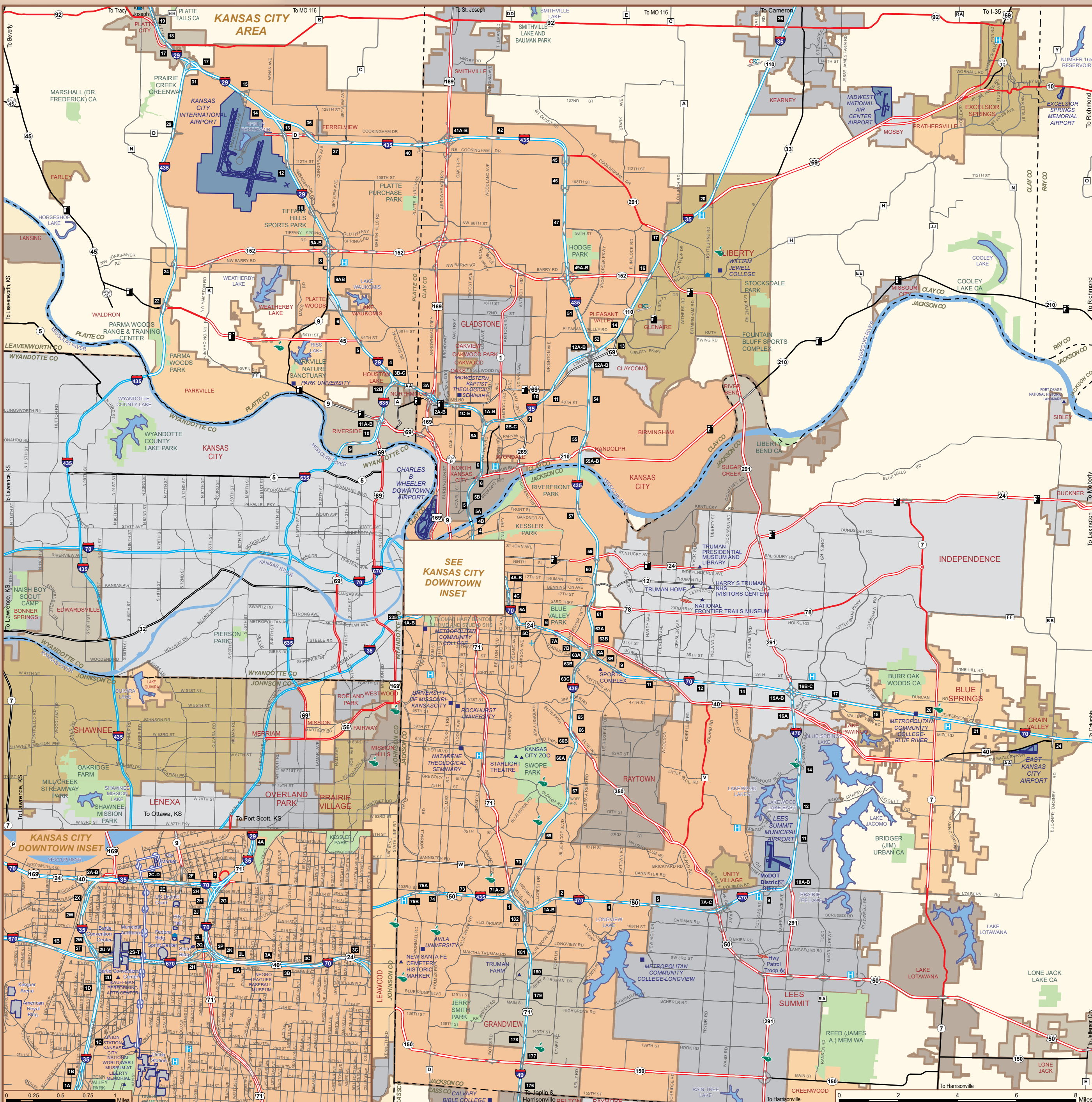
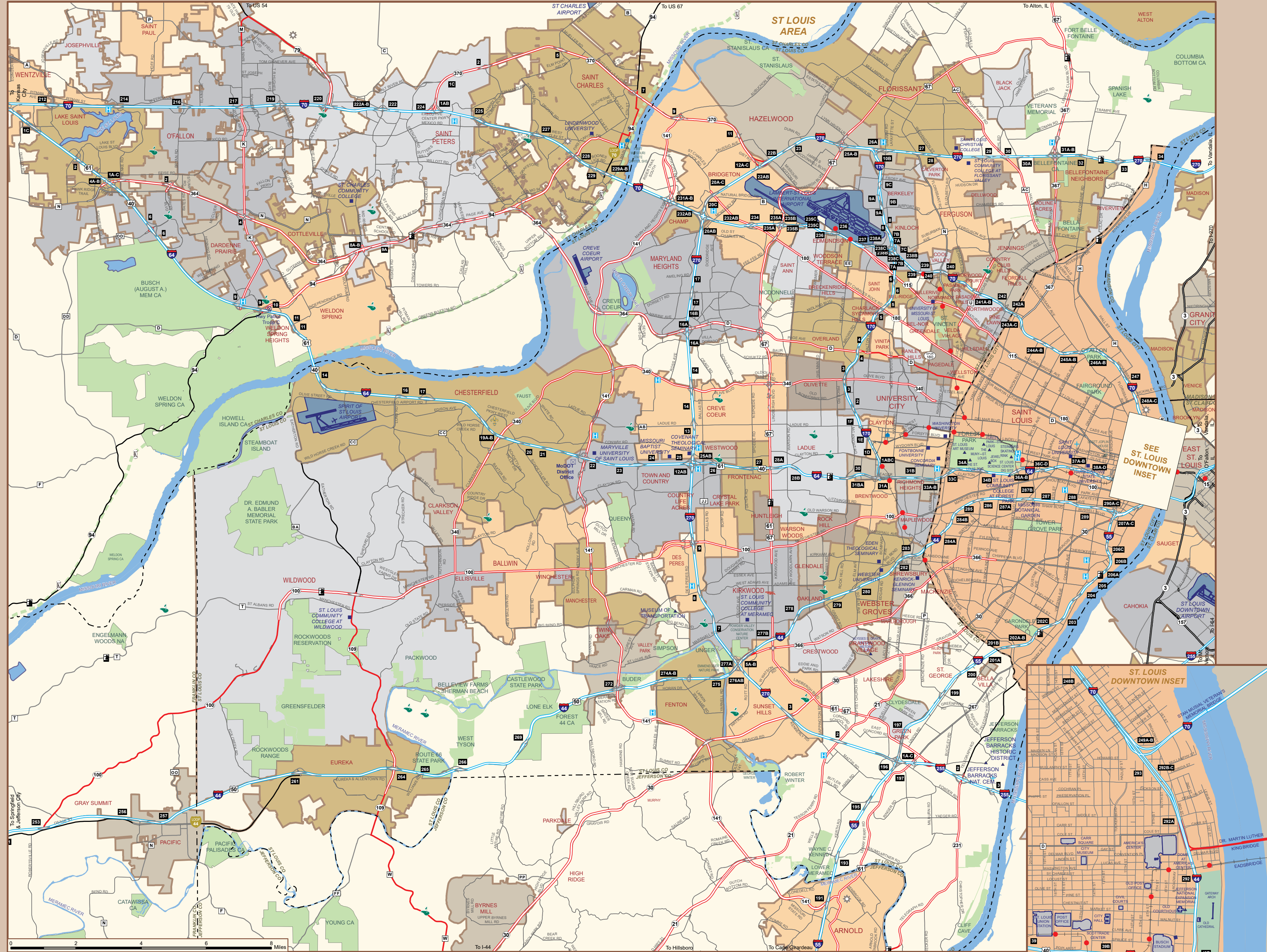
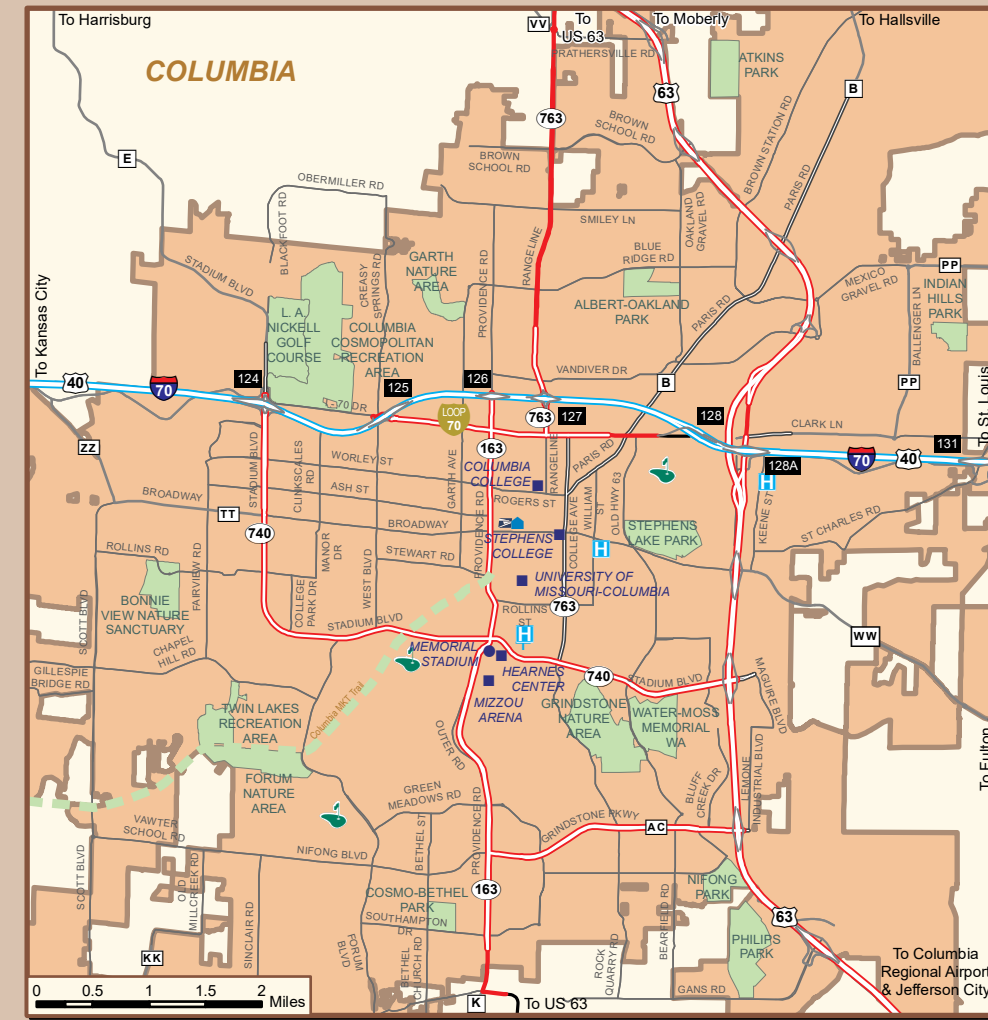


Missouri State Highway Patrol

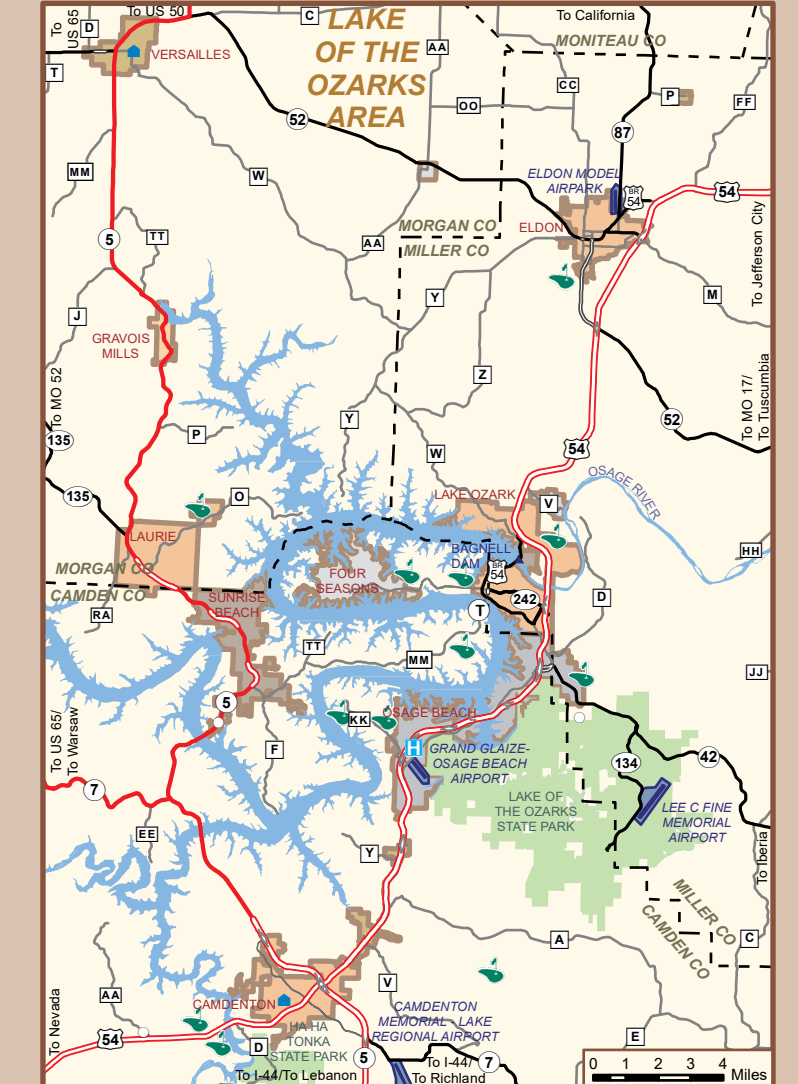
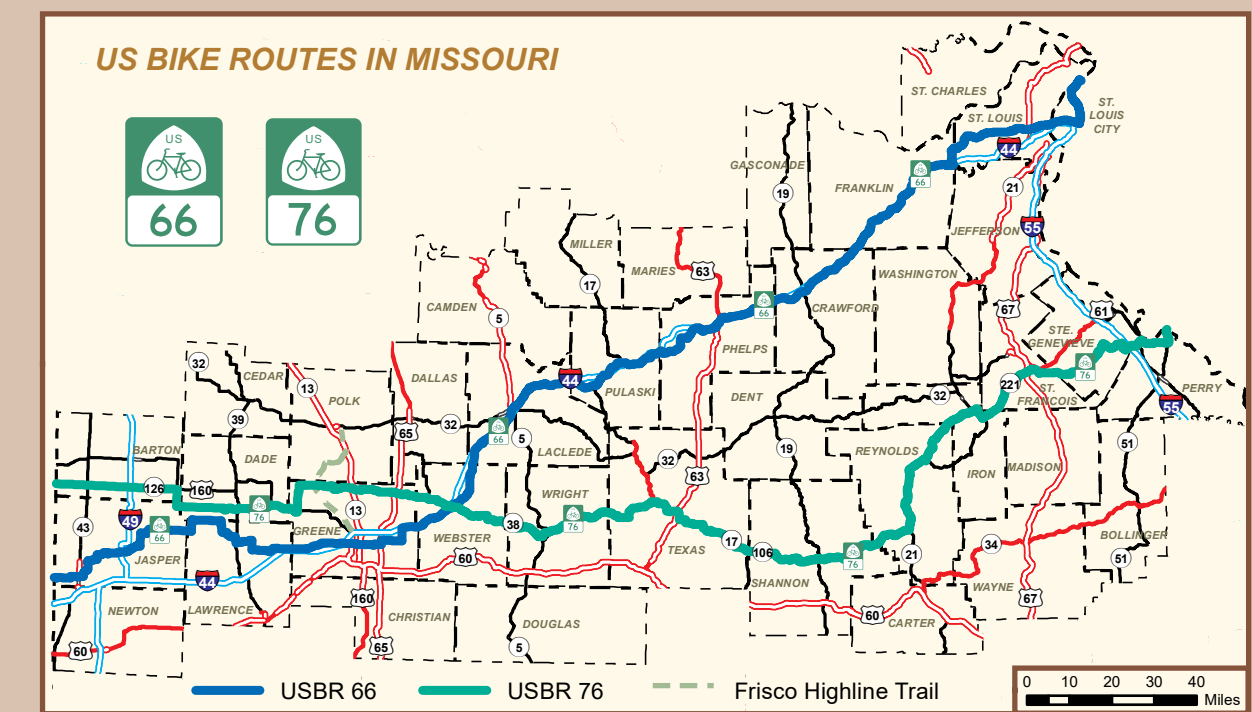
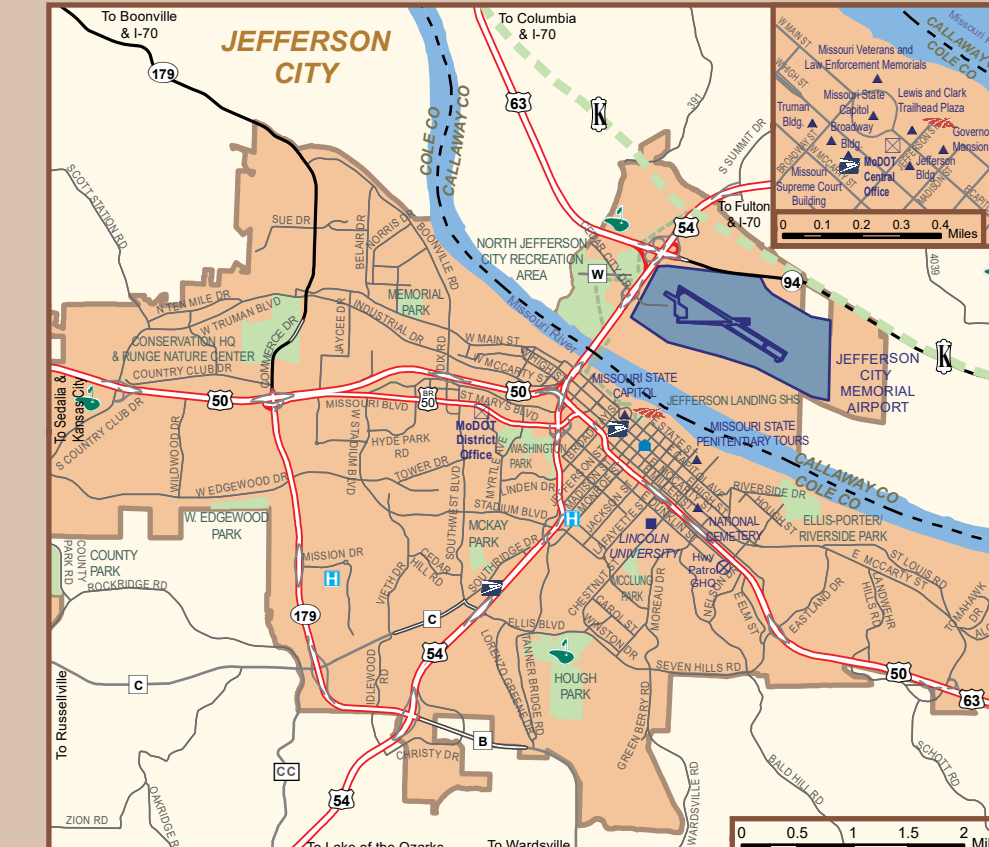
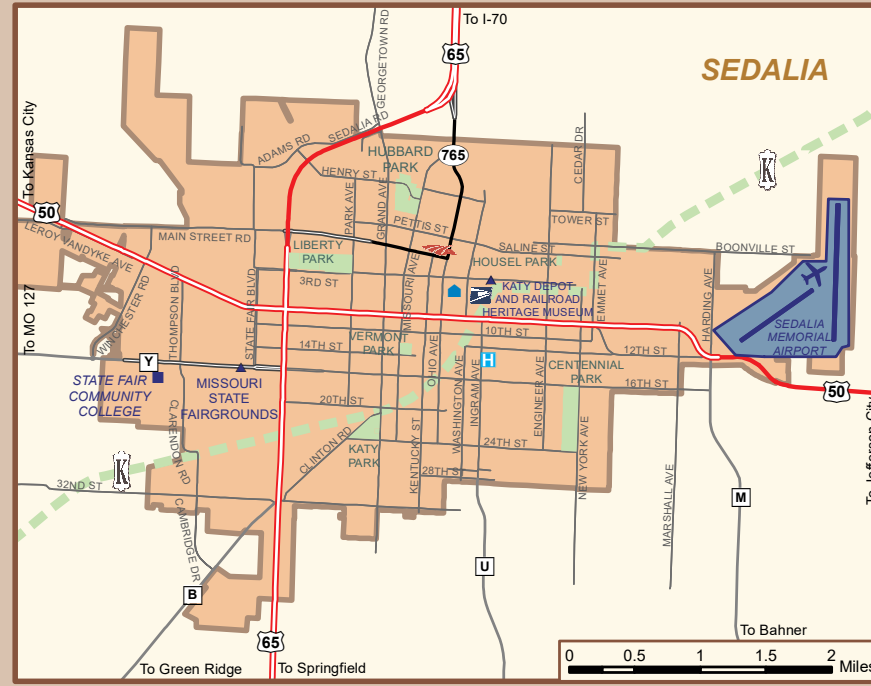
Emergency 800-525-5555 or *55 on a cellular phone
Non-emergency 573-751-3313

GHQ - Jefferson City	1510 E. Elm St.	573-751-3313
Troop A - Lee's Summit	504 S.E. Blue Parkway	816-622-0800
Troop B - Mazon	308 Pine Crest Dr.	660-385-2132
Troop C - Weldon Spring	891 Technology Dr.	636-300-2800
Troop D - St. Louis	3180 Koch Rd.	314-416-2180
Troop E - Park Hills	5268 Flat River Rd.	573-431-0166
Troop F - Springfield	3131 E. Kearney St.	417-895-6868
Troop G - Carthage	5182 S. Grand Ave.	417-350-1500
Troop H - Poplar Bluff	4947 Highway 67 North	573-840-9500
Troop I - Sikeston	105 Keystone Dr.	573-472-5200
Troop J - Jefferson City	2920 N. Shamrock Rd.	573-751-1000
Troop K - Willow Springs	1226 W. Bus. Route 60 63	417-469-3121
Troop L - St. Joseph	3525 N. Bell Highway	816-387-2345
Troop M - Rolla	1301 Nagragam Rd.	573-368-2345

www.mshp.dps.missouri.gov

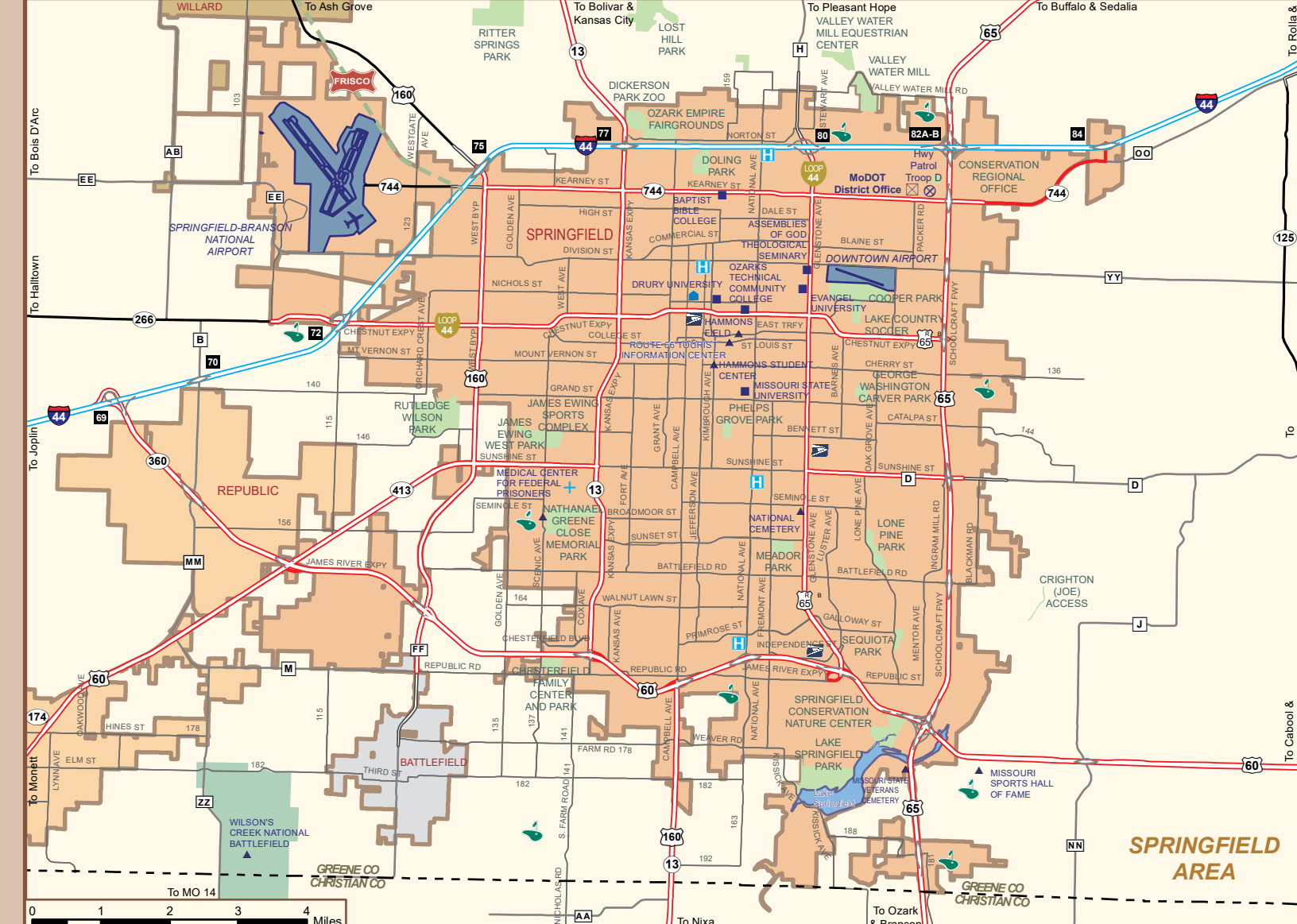
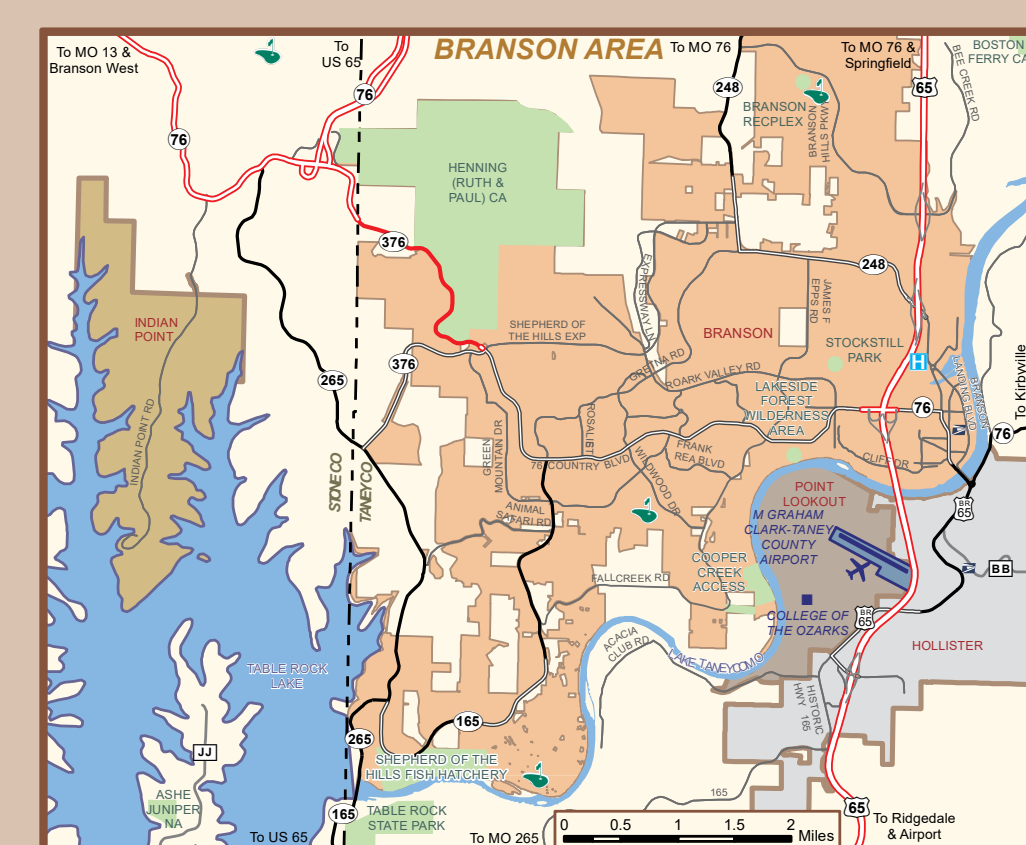
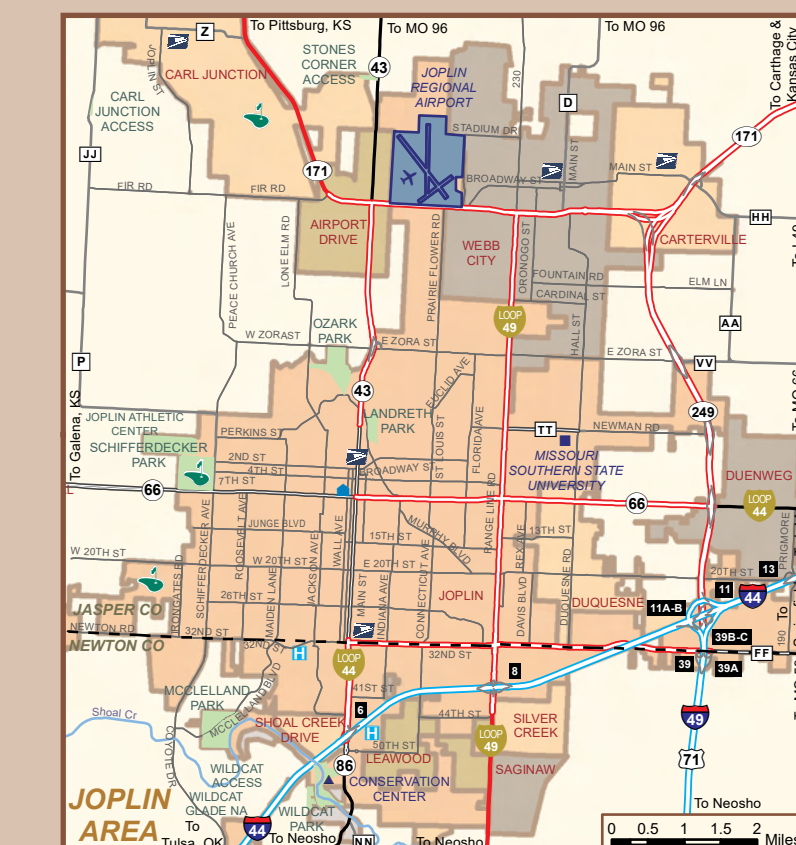


LEGEND
SYMBOLS SHOWN REFER TO THE CITY HEIGHTS ONLY. ALL OTHER SYMBOLS TO BE REFERENCED FROM THE MAIN LEGEND ON THE STATE SIDE OF THE MAP.



200 Years of Travel

On April 30, 1803, the United States government agreed to purchase almost 828,000 square miles from France, virtually doubling the size of the country. The Louisiana Purchase would begin to shape Missouri's vital role in transportation across the young nation. Just a year later, President Thomas Jefferson commissioned the Corps of Discovery, led by Meriwether Lewis and William Clark, to explore the Missouri River and to expand the American fur trade. A major component of that expedition was an attempt to locate a northwestern water route to the Pacific Ocean. By the time Missouri became a state in 1821, the Missouri and Mississippi Rivers had already become important modes of transportation, carrying goods and passengers up and down the east side as well as across the state. In that same year, 20 men with trade goods left Franklin, Missouri, on an 800-mile journey to Santa Fe. Within three years, the Santa Fe Trail would become a vital transportation link to Missouri's economy. By the early to mid-1830s, the 2,170-mile Oregon Trail starting in Independence, Missouri, transported approximately 400,000 settlers, farmers and families to points west. By the later part of the century, trains had begun making their mark on the Missouri landscape. The Missouri-Kansas-Texas Railway began serving an extensive rail network in Missouri and surrounding states. By the middle of the 20th century, the MKT—or Katy, for short—operated 2,623 miles of road and 3,765 miles of track. Today, the right-of-way of the former MKT Railroad is the country's longest recreational rail-trail. The Katy Trail State Park runs 240 miles from Clinton to St. Charles and is a magnet for bikers and bicyclists. Missouri was the first state to award contracts with new interstate construction funding after the Federal-Aid Highway Act of 1956 was passed. On August 2, 1956, Missouri awarded two contracts—the first in LaGrange County on what is now I-44 and the second to work on a stretch of road in St. Charles County that is now I-70. The St. Charles project started on August 13, which also makes Missouri the first state to begin construction on an interstate highway. In this bicentennial year, Missouri currently has 4,800 miles of railroad tracks, 1,379 miles of Interstate highways, 125 public-use airports and 15 public ports. When goods move from one side of the country to the other, it's likely they'll pass through Missouri. Before the end of its first century, Missouri would be known as "The Show-Me State." We're anxious to show its unique history, beauty and culture to visitors from across the country and around the world. Thank you for joining our birthday celebration during Missouri's bicentennial—1821-2021.



Travel Resources

Department of Transportation	Traveler Information Map www.traveler.mdot.org	Mobile version available in the app store
Division of Tourism	To order a Missouri Travel Guide www.visitMO.com	800-519-8800
Department of Revenue	Driver & Motor Vehicle Licensing www.dor.mo.gov	573-751-4600
Department of Conservation	Nature Areas, Hunting & Fishing www.dnr.mo.gov	573-751-4115
Department of Natural Resources	Park & Historic Site Information www.mostatoparks.com	800-334-6946 800-379-2419 (TDD)
Amtrak	Tickets & Information www.amtrak.com	800-USA-RAIL 800-872-7245
Water Patrol Division	News & Information www.mshp.dps.missouri.gov/MSHPWeb/WaterPatrol	573-751-3313
Relay Missouri	Provides full telephone accessibility to the deaf, hard of hearing, deaf-blind, and speech disabled	Dial 711 or 800-735-2966 (TTY) 866-735-2460 (Voice)

