

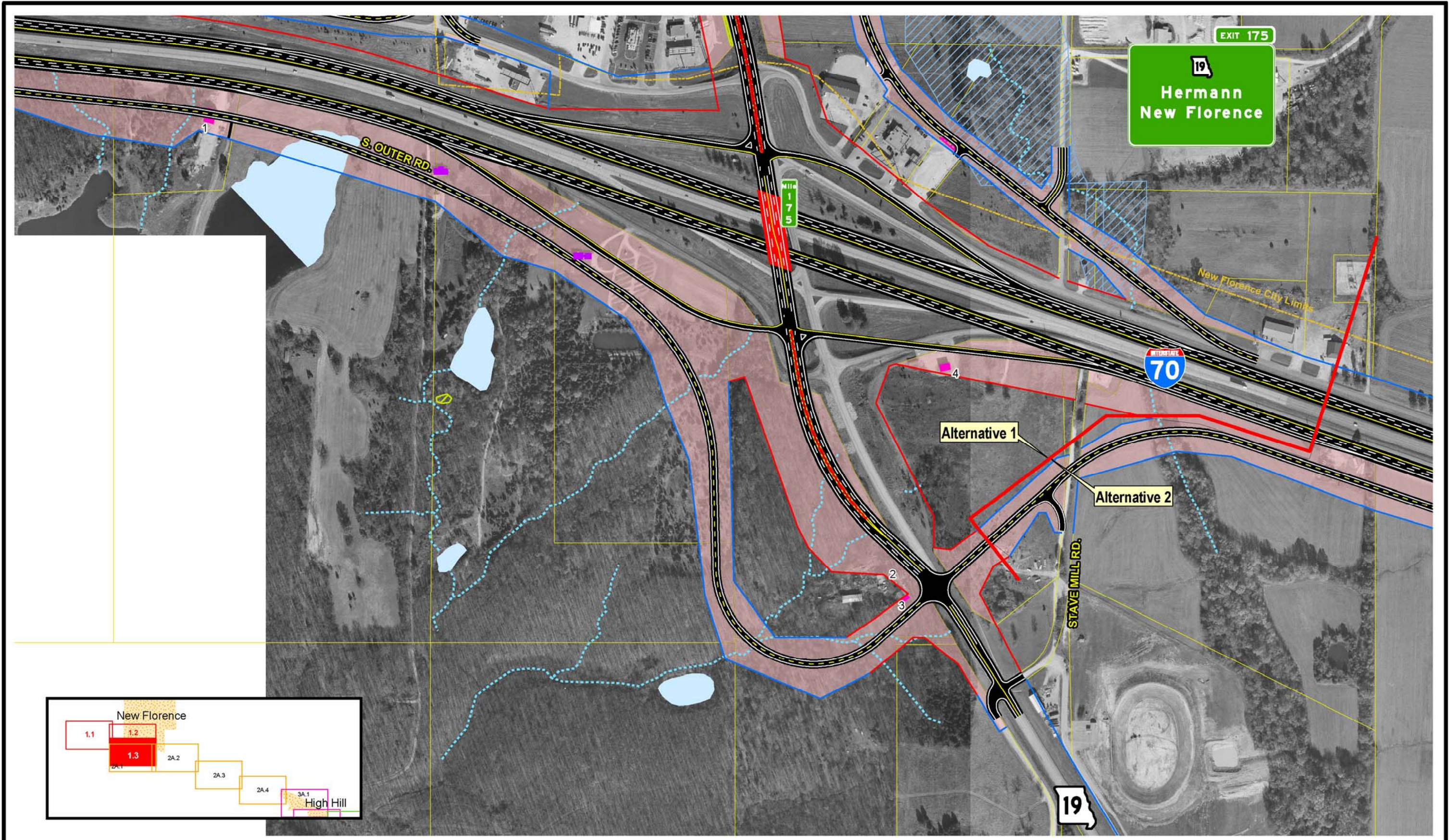
SIU 7
Route 19
to
Lake St. Louis

- | | | | | | |
|---------------------------|---------------|-----------------------|-------------------------------|--|----------------------------|
| — Limited Access R/W | — City Limits | ▲ Schools | — Lakes | — Existing Pavement to Remain | — Intermittent Streams |
| — Right-In, Right-Out R/W | — Cemeteries | ▲ Hazardous Materials | — Jurisdictional Ponds | — NRHP Eligible Resource (w/MoDOT Resource Number) | — Perennial Streams |
| — Normal R/W | — Churches | — Parks | — Jurisdictional Wetlands | — Parcel Boundary | — Residential Displacement |
| — Proposed Bridge | — Hospitals | — Floodplains | — Non-Jurisdictional Wetlands | | — Commercial Displacement |
| | | | | | — Land Acquisition |

Widening Improvements to Existing Corridor- Alternative 1 (Preferred)

Scale: 1" = 400'

EXHIBIT 1.1



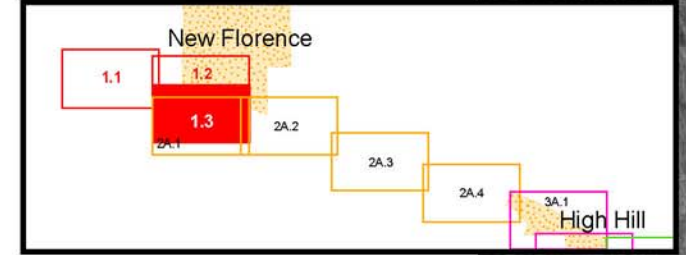
EXIT 175
 19
 Hermann
 New Florence

INTERSTATE
 70

STAVE MILL RD.
 19

Alternative 1

Alternative 2



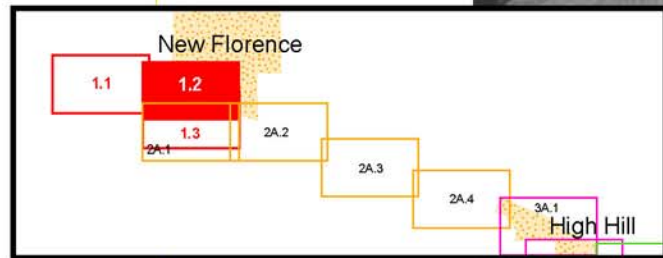
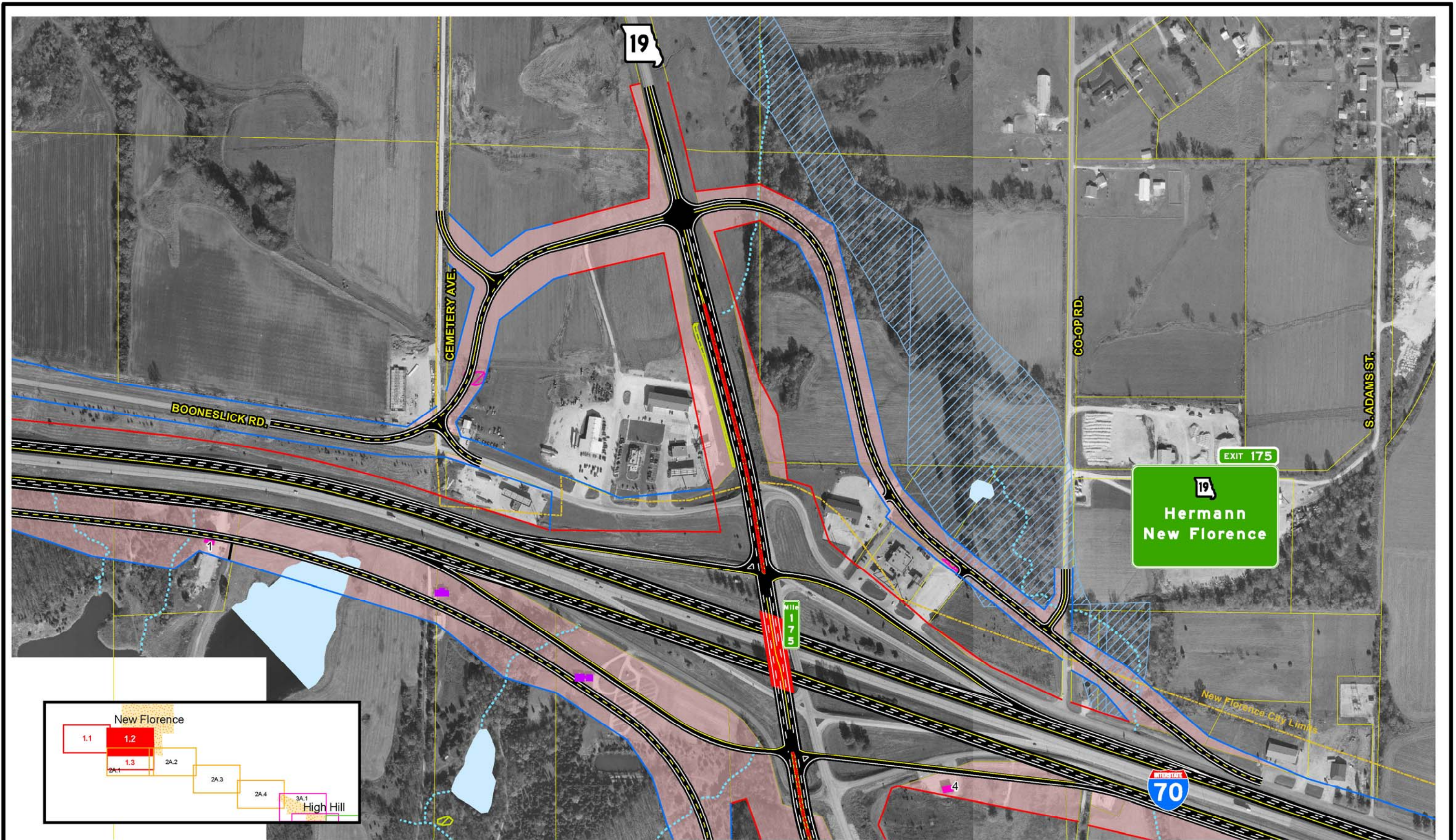
SIU
 7
 Route 19
 to
 Lake St. Louis

- | | | | | | |
|---------------------------|---------------|-----------------------|-------------------------------|--|----------------------------|
| — Limited Access R/W | — City Limits | ▲ Schools | — Lakes | — Existing Pavement to Remain | — Intermittent Streams |
| — Right-In, Right-Out R/W | — Cemeteries | ▲ Hazardous Materials | — Jurisdictional Ponds | — NRHP Eligible Resource (w/MoDOT Resource Number) | — Perennial Streams |
| — Normal R/W | — Churches | — Parks | — Jurisdictional Wetlands | — Parcel Boundary | — Residential Displacement |
| — Proposed Bridge | — Hospitals | — Floodplains | — Non-Jurisdictional Wetlands | | — Commercial Displacement |

Scale: 1" = 400'

Widening Improvements to
 Existing Corridor-
 Alternative 1 (Preferred)

EXHIBIT
 1.3



SIU
7
 Route 19
 to
 Lake St. Louis

- | | | | | | |
|---------------------------|---------------|-----------------------|-------------------------------|--|----------------------------|
| — Limited Access R/W | — City Limits | ▲ Schools | — Lakes | — Existing Pavement to Remain | — Intermittent Streams |
| — Right-In, Right-Out R/W | — Cemeteries | ▲ Hazardous Materials | — Jurisdictional Ponds | — NRHP Eligible Resource (w/MoDOT Resource Number) | — Perennial Streams |
| — Normal R/W | — Churches | — Parks | — Jurisdictional Wetlands | — Parcel Boundary | — Residential Displacement |
| — Proposed Bridge | — Hospitals | — Floodplains | — Non-Jurisdictional Wetlands | | — Commercial Displacement |

Scale: 1" = 400'

Widening Improvements to Existing Corridor- Alternative 1 (Preferred)

EXHIBIT 1.2