

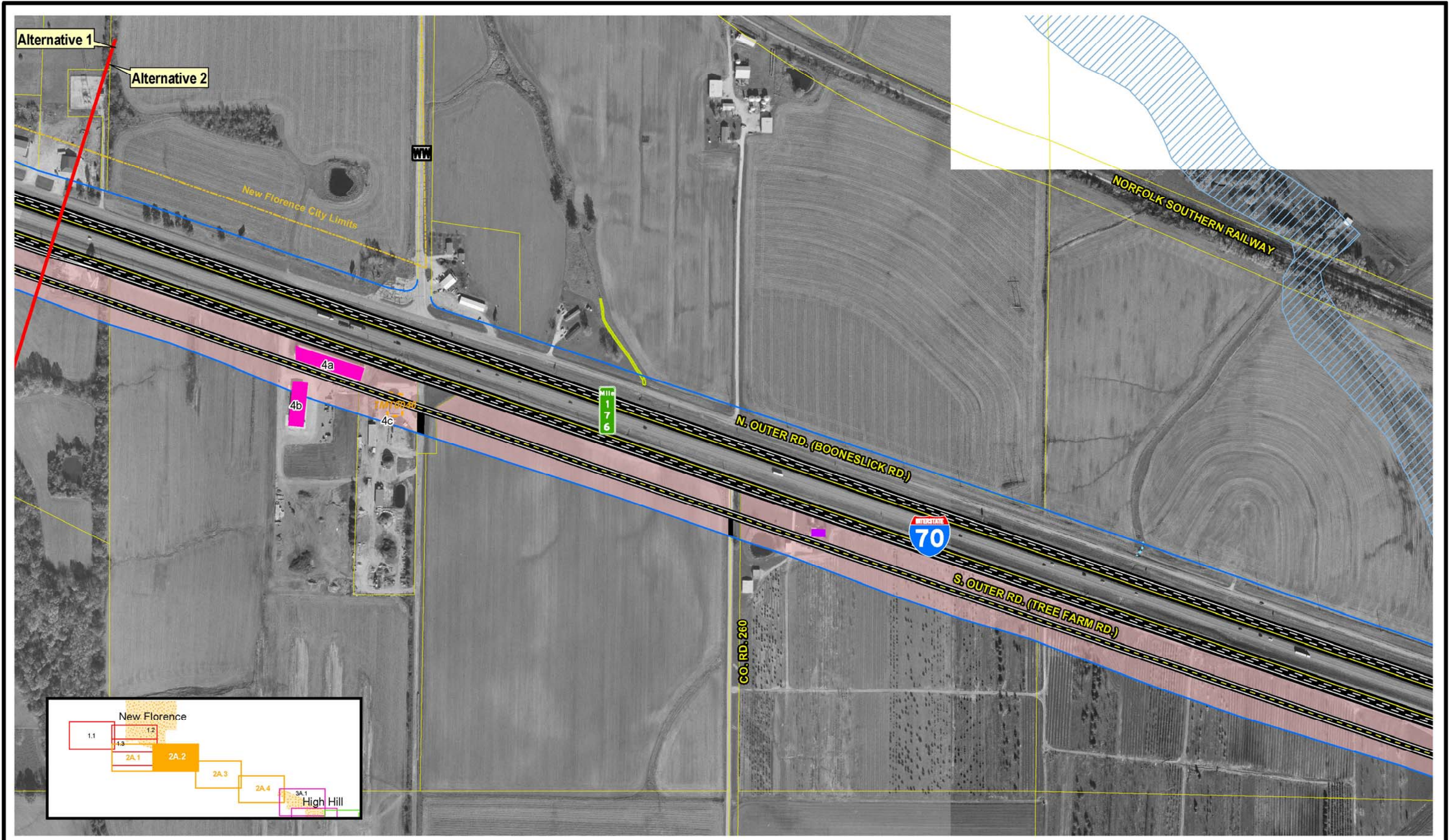
SIU  
**7**  
 Route 19  
 to  
 Lake St. Louis

- Limited Access RW
- Right-In, Right-Out RW
- Normal RW
- Proposed Bridge
- City Limits
- Cemeteries
- Churches
- Hospitals
- Schools
- Hazardous Materials
- Parks
- Floodplains
- Lakes
- Jurisdictional Ponds
- Jurisdictional Wetlands
- Non-Jurisdictional Wetlands
- Existing Pavement to Remain
- NRHP Eligible Resource (w/MoDOT Resource Number)
- Parcel Boundary
- Intermittent Streams
- Perennial Streams
- Residential Displacement
- Commercial Displacement
- Land Acquisition



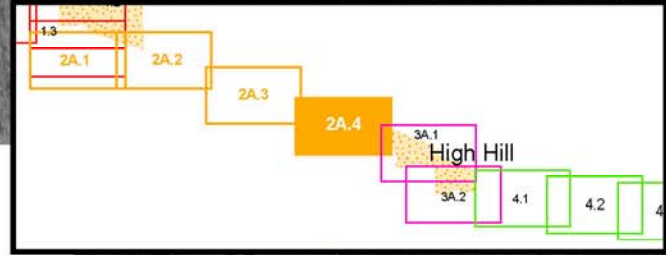
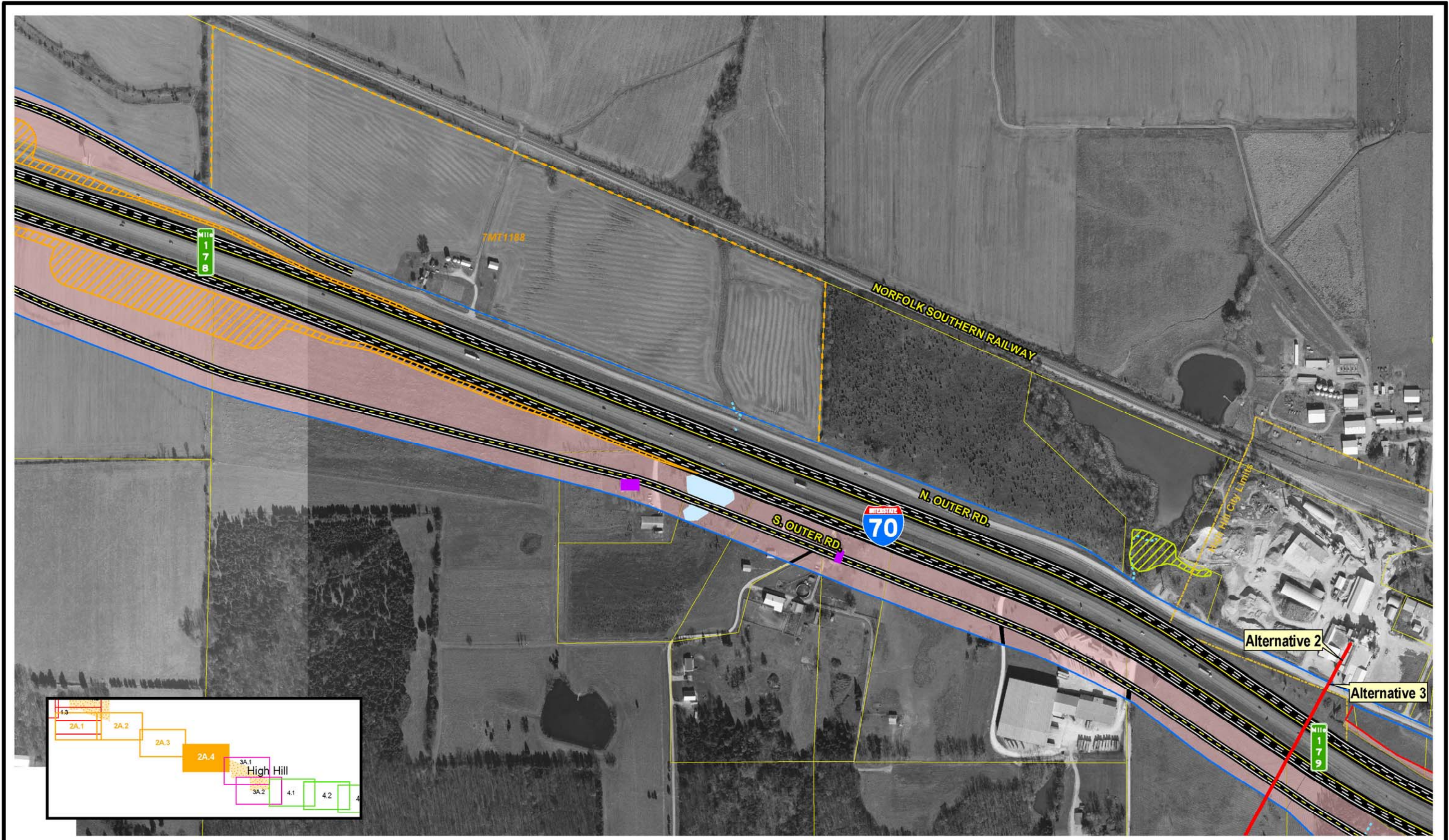
**Widening Improvements to Existing Corridor- Alternative 2A**

**EXHIBIT 2A.1**



		<b>SIU 7</b> Route 19 to Lake St. Louis	Limited Access R/W	City Limits	Schools	Lakes	Existing Pavement to Remain	Intermittent Streams
			Right-In, Right-Out R/W	Cemeteries	Hazardous Materials	Jurisdictional Ponds	NRHP Eligible Resource (w/MoDOT Resource Number)	Perennial Streams
Normal R/W	Churches	Parks	Jurisdictional Wetlands	Parcel Boundary	Residential Displacement	Commercial Displacement	Land Acquisition	Non-Jurisdictional Wetlands
Proposed Bridge	Hospitals	Floodplains	Floodplains					

**Widening Improvements to Existing Corridor- Alternative 2A**  
 Scale: 1" = 400'  
**EXHIBIT 2A.2**



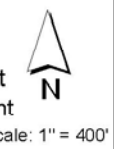
 <b>IMPROVE</b> <b>i70</b>	<b>SIU 7</b> Route 19 to Lake St. Louis	Limited Access R/W	City Limits	Schools	Lakes	Existing Pavement to Remain	Intermittent Streams
		Right-In, Right-Out R/W	Cemeteries	Hazardous Materials	Jurisdictional Ponds	NRHP Eligible Resource (w/MoDOT Resource Number)	Perennial Streams
Normal R/W	Churches	Parks	Jurisdictional Wetlands	Floodplains	Proposed Weigh Station	Commercial Displacement	N Scale: 1" = 400'
Proposed Bridge	Hospitals	Non-Jurisdictional Wetlands	Parcel Boundary	Land Acquisition	Alternative 2	Alternative 3	<b>Widening Improvements to Existing Corridor - Alternative 2A</b>

EXHIBIT 2A.4



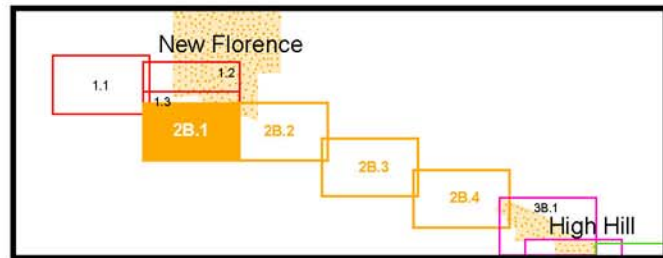
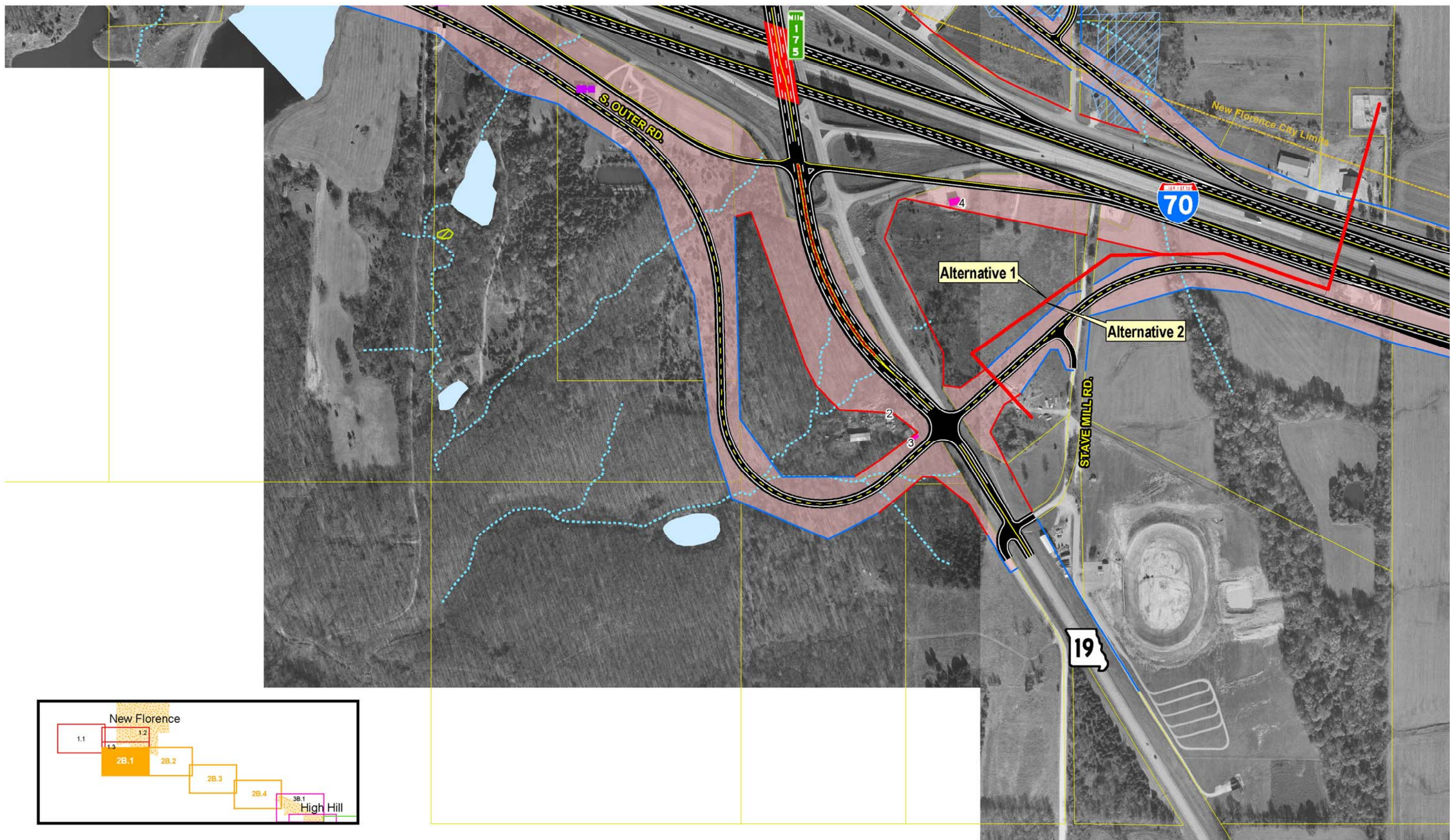
SIU  
**7**  
Route 19  
to  
Lake St. Louis

<ul style="list-style-type: none"> <li><span style="color: red;">—</span> Limited Access R/W</li> <li><span style="color: green;">—</span> Right-In, Right-Out R/W</li> <li><span style="color: blue;">—</span> Normal R/W</li> <li><span style="color: red;">■</span> Proposed Bridge</li> </ul>	<ul style="list-style-type: none"> <li><span style="border: 1px dashed yellow;"> </span> City Limits</li> <li><span style="color: purple;">+</span> Cemeteries</li> <li><span style="color: purple;">+</span> Churches</li> <li><span style="color: blue;">+</span> Hospitals</li> </ul>	<ul style="list-style-type: none"> <li><span style="color: red;">▲</span> Schools</li> <li><span style="color: orange;">▲</span> Hazardous Materials</li> <li><span style="color: green;">■</span> Parks</li> <li><span style="color: blue;">■</span> Floodplains</li> </ul>	<ul style="list-style-type: none"> <li><span style="color: lightblue;">■</span> Lakes</li> <li><span style="color: lightblue;">■</span> Jurisdictional Ponds</li> <li><span style="color: yellow;">■</span> Jurisdictional Wetlands</li> <li><span style="color: pink;">■</span> Non-Jurisdictional Wetlands</li> </ul>	<ul style="list-style-type: none"> <li><span style="color: gray;">■</span> Existing Pavement to Remain</li> <li><span style="border: 1px dashed orange;"> </span> NRHP Eligible Resource (w/MoDOT Resource Number)</li> <li><span style="color: orange;">■</span> Proposed Weigh Station</li> <li><span style="border: 1px solid yellow;"> </span> Parcel Boundary</li> </ul>	<ul style="list-style-type: none"> <li><span style="color: blue;">---</span> Intermittent Streams</li> <li><span style="color: cyan;">---</span> Perennial Streams</li> <li><span style="color: purple;">■</span> Residential Displacement</li> <li><span style="color: pink;">■</span> Commercial Displacement</li> <li><span style="color: lightpink;">■</span> Land Acquisition</li> </ul>
---	--	--	---	---	---



**Widening Improvements to Existing Corridor- Alternative 2A**

EXHIBIT  
**2A.3**



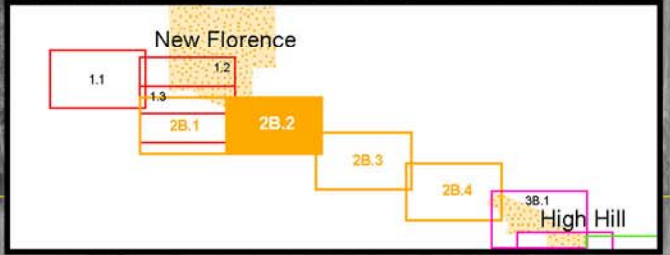
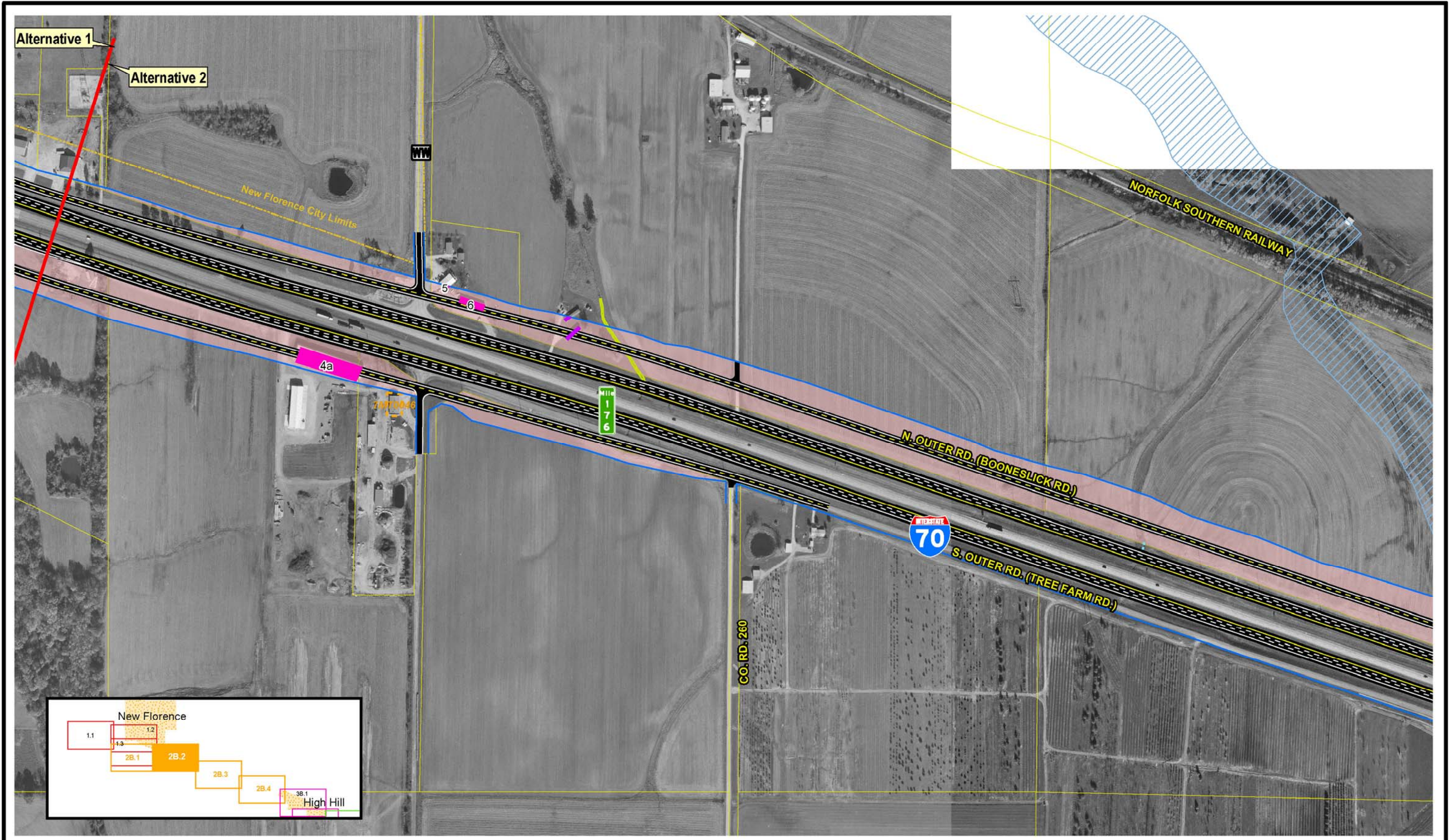
SIU  
**7**  
Route 19  
to  
Lake St. Louis

- |                           |               |                       |                               |                               |                            |
|---------------------------|---------------|-----------------------|-------------------------------|-------------------------------|----------------------------|
| — Limited Access R/W      | — City Limits | ▲ Schools             | — Lakes                       | — Existing Pavement to Remain | — Intermittent Streams     |
| — Right-In, Right-Out R/W | — Cemeteries  | ▲ Hazardous Materials | — Jurisdictional Ponds        | — NRHP Eligible Resource      | — Perennial Streams        |
| — Normal R/W              | — Churches    | ▲ Parks               | — Jurisdictional Wetlands     | — (w/MoDOT Resource Number)   | — Residential Displacement |
| — Proposed Bridge         | — Hospitals   | — Floodplains         | — Non-Jurisdictional Wetlands | — Parcel Boundary             | — Commercial Displacement  |
|                           |               |                       |                               |                               | — Land Acquisition         |

**Widening Improvements to Existing Corridor- Alternative 2B**

Scale: 1" = 400'

EXHIBIT  
**2B.1**



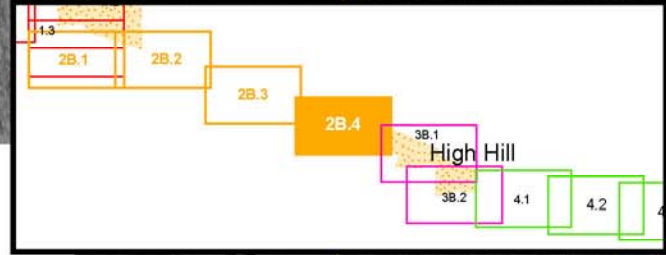
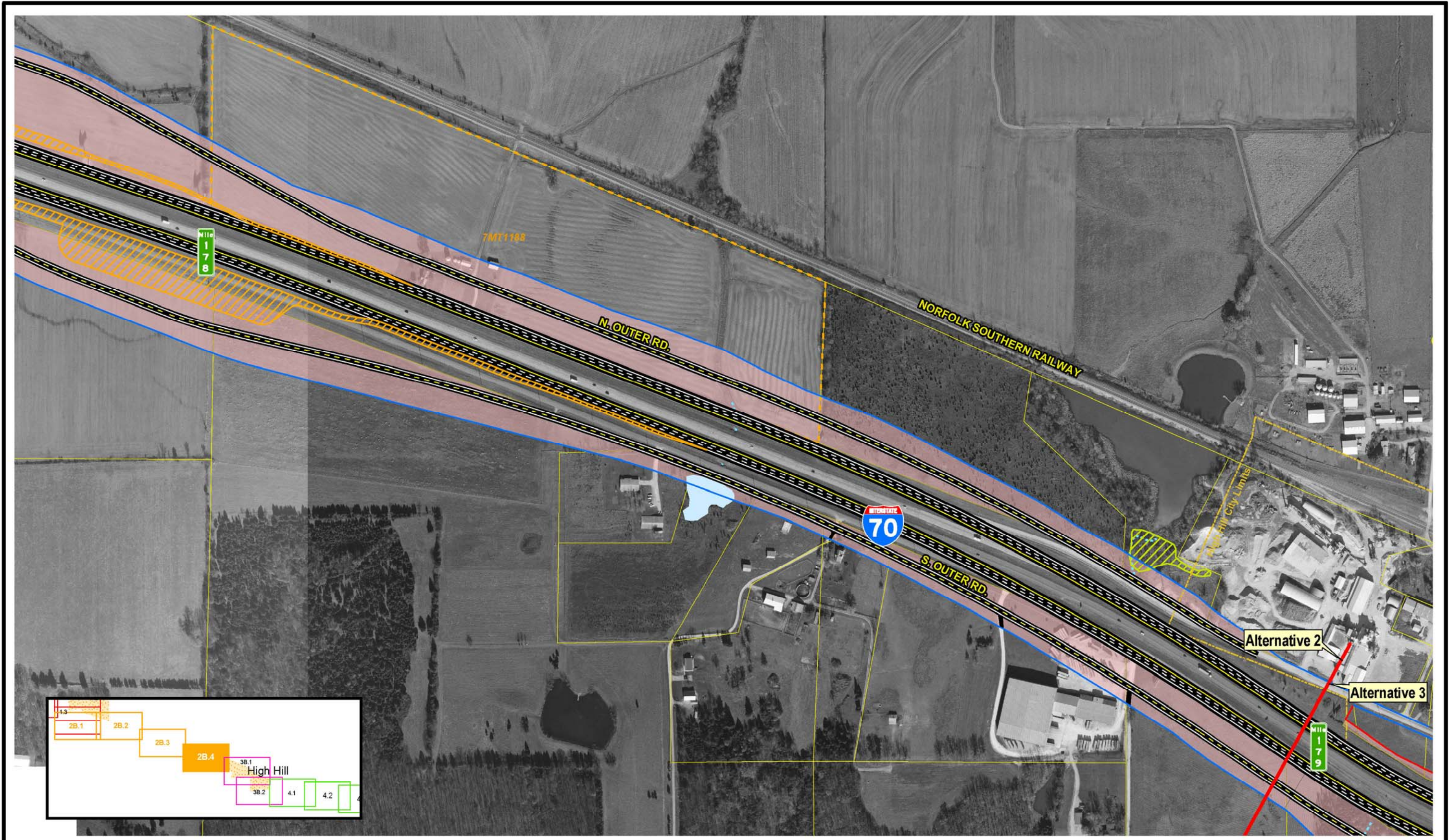
SIU  
**7**  
 Route 19  
 to  
 Lake St. Louis

- |                           |             |                     |                             |  |                          |
|---------------------------|-------------|---------------------|-----------------------------|--|--------------------------|
| — Limited Access R/W      | City Limits | Schools             | Lakes                       | Existing Pavement to Remain                      | Intermittent Streams     |
| — Right-In, Right-Out R/W | Cemeteries  | Hazardous Materials | Jurisdictional Ponds        | NRHP Eligible Resource (w/MoDOT Resource Number) | Perennial Streams        |
| — Normal R/W              | Churches    | Parks               | Jurisdictional Wetlands     | Parcel Boundary                                  | Residential Displacement |
| — Proposed Bridge         | Hospitals   | Floodplains         | Non-Jurisdictional Wetlands |  | Commercial Displacement  |
|                           |             |                     |                             |  | Land Acquisition         |

Widening Improvements to Existing Corridor- Alternative 2B

Scale: 1" = 400'

EXHIBIT 2B.2

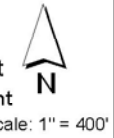


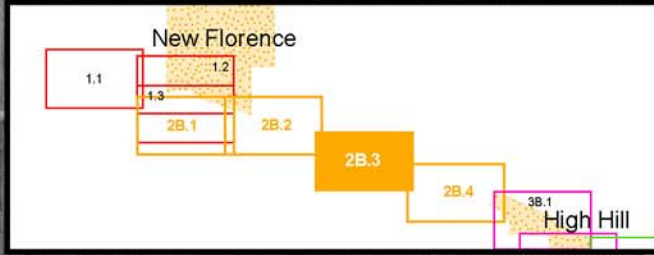
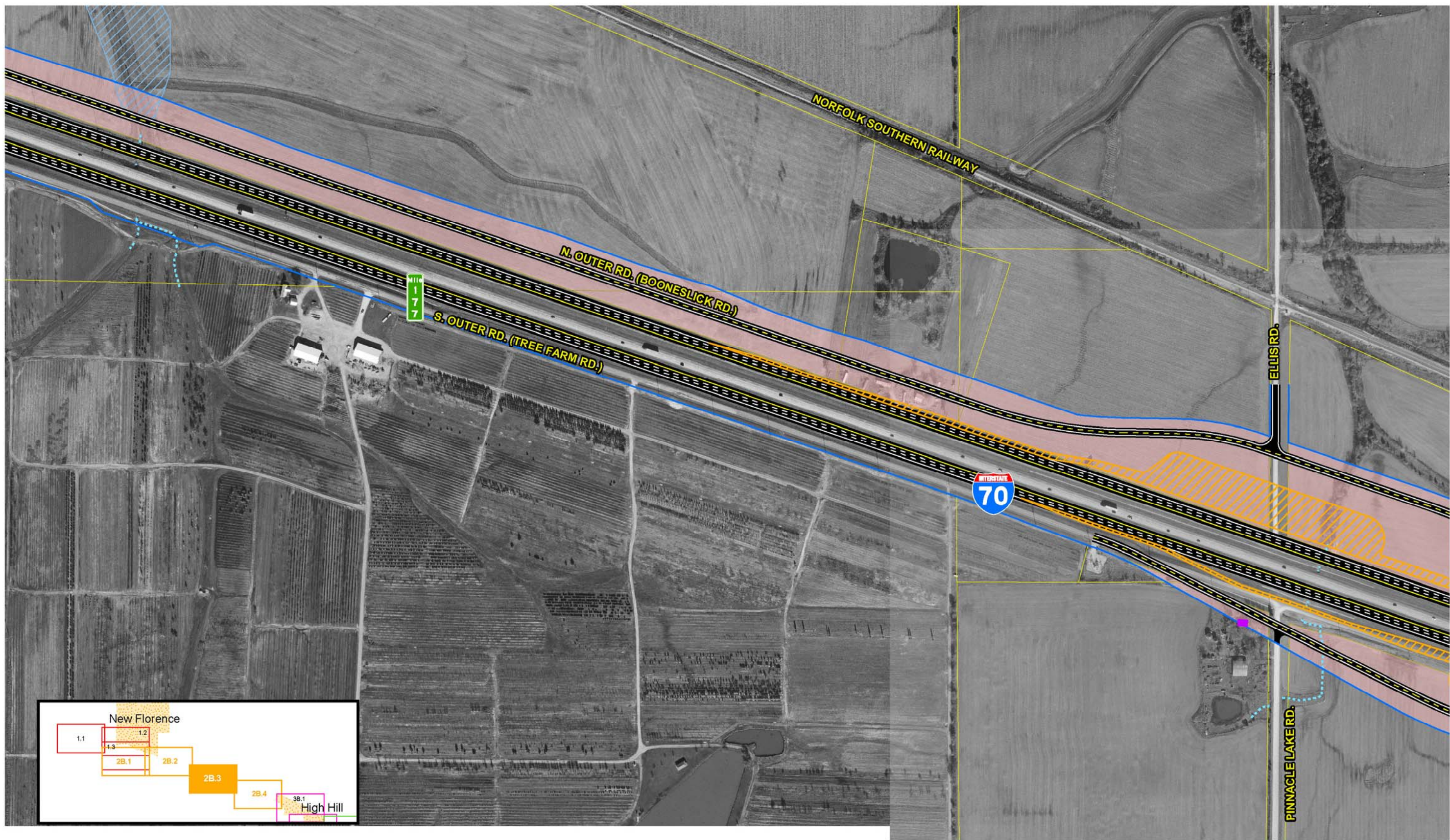
SIU  
**7**  
 Route 19  
 to  
 Lake St. Louis

- |                           |               |                       |                               |  |                            |
|---------------------------|---------------|-----------------------|-------------------------------|--|----------------------------|
| — Limited Access R/W      | — City Limits | ▲ Schools             | — Lakes                       | — Existing Pavement to Remain                      | — Intermittent Streams     |
| — Right-In, Right-Out R/W | — Cemeteries  | ▲ Hazardous Materials | — Jurisdictional Ponds        | — NRHP Eligible Resource (w/MoDOT Resource Number) | — Perennial Streams        |
| — Normal R/W              | — Churches    | — Parks               | — Jurisdictional Wetlands     | — Proposed Weigh Station                           | — Residential Displacement |
| — Proposed Bridge         | — Hospitals   | — Floodplains         | — Non-Jurisdictional Wetlands | — Parcel Boundary                                  | — Commercial Displacement  |
|                           |               |                       |                               |  | — Land Acquisition         |

**Widening Improvements to Existing Corridor- Alternative 2B**

EXHIBIT  
**2B.4**





SIU  
7  
Route 19  
to  
Lake St. Louis

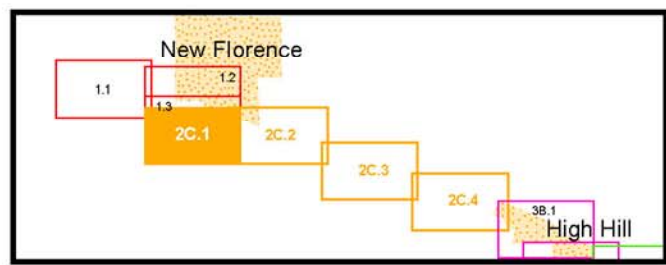
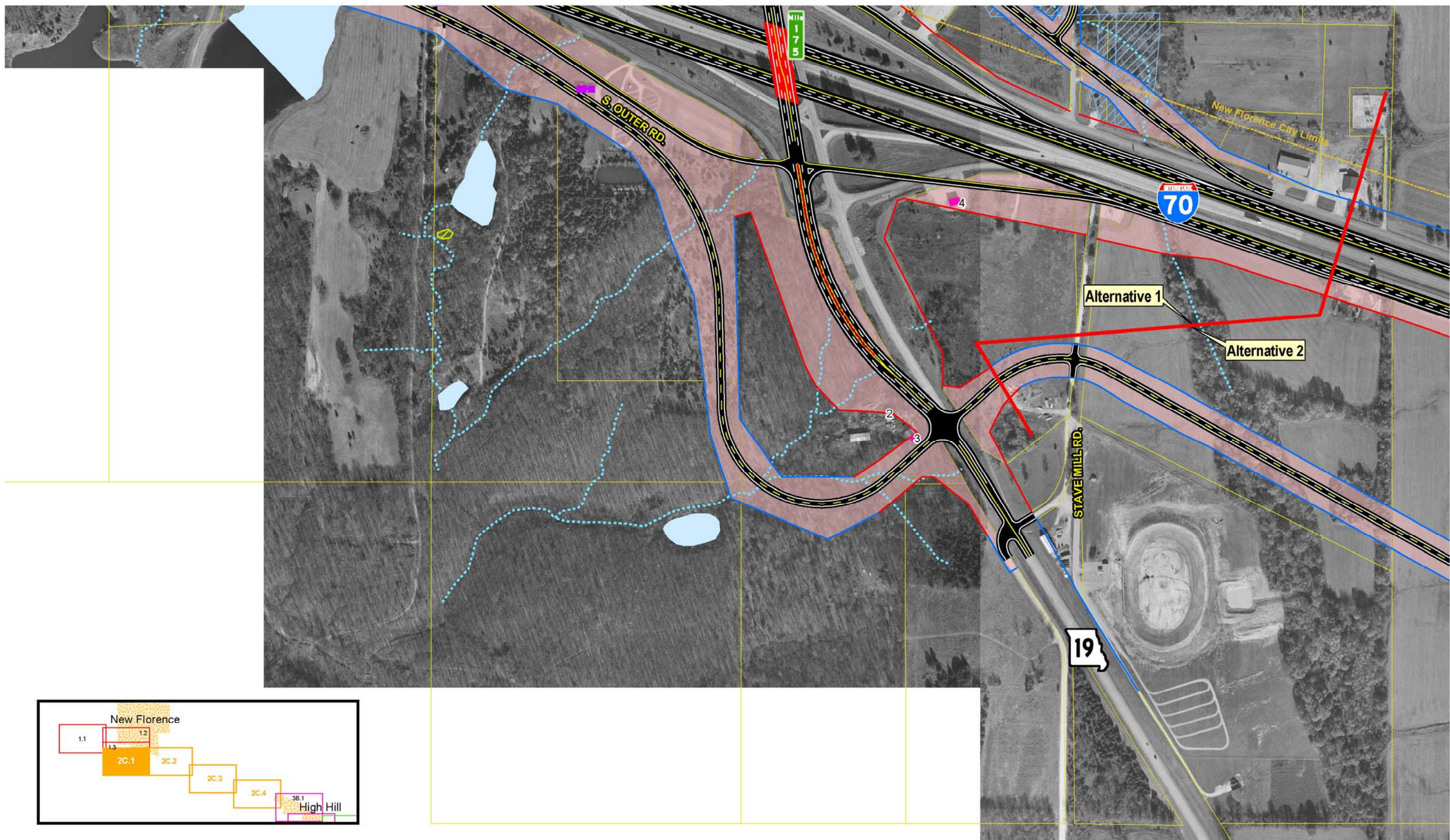
- |                           |               |                       |                               |  |                            |
|---------------------------|---------------|-----------------------|-------------------------------|--|----------------------------|
| — Limited Access R/W      | — City Limits | ▲ Schools             | — Lakes                       | — Existing Pavement to Remain                      | — Intermittent Streams     |
| — Right-In, Right-Out R/W | — Cemeteries  | ▲ Hazardous Materials | — Jurisdictional Ponds        | — NRHP Eligible Resource (w/MoDOT Resource Number) | — Perennial Streams        |
| — Normal R/W              | — Churches    | — Parks               | — Jurisdictional Wetlands     | — Proposed Weigh Station                           | — Residential Displacement |
| — Proposed Bridge         | — Hospitals   | — Floodplains         | — Non-Jurisdictional Wetlands | — Parcel Boundary                                  | — Commercial Displacement  |
|                           |               |                       |                               |  | — Land Acquisition         |

Widening Improvements to  
Existing Corridor-  
Alternative 2B

EXHIBIT  
2B.3







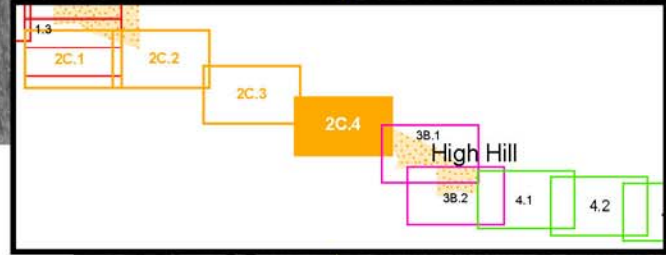
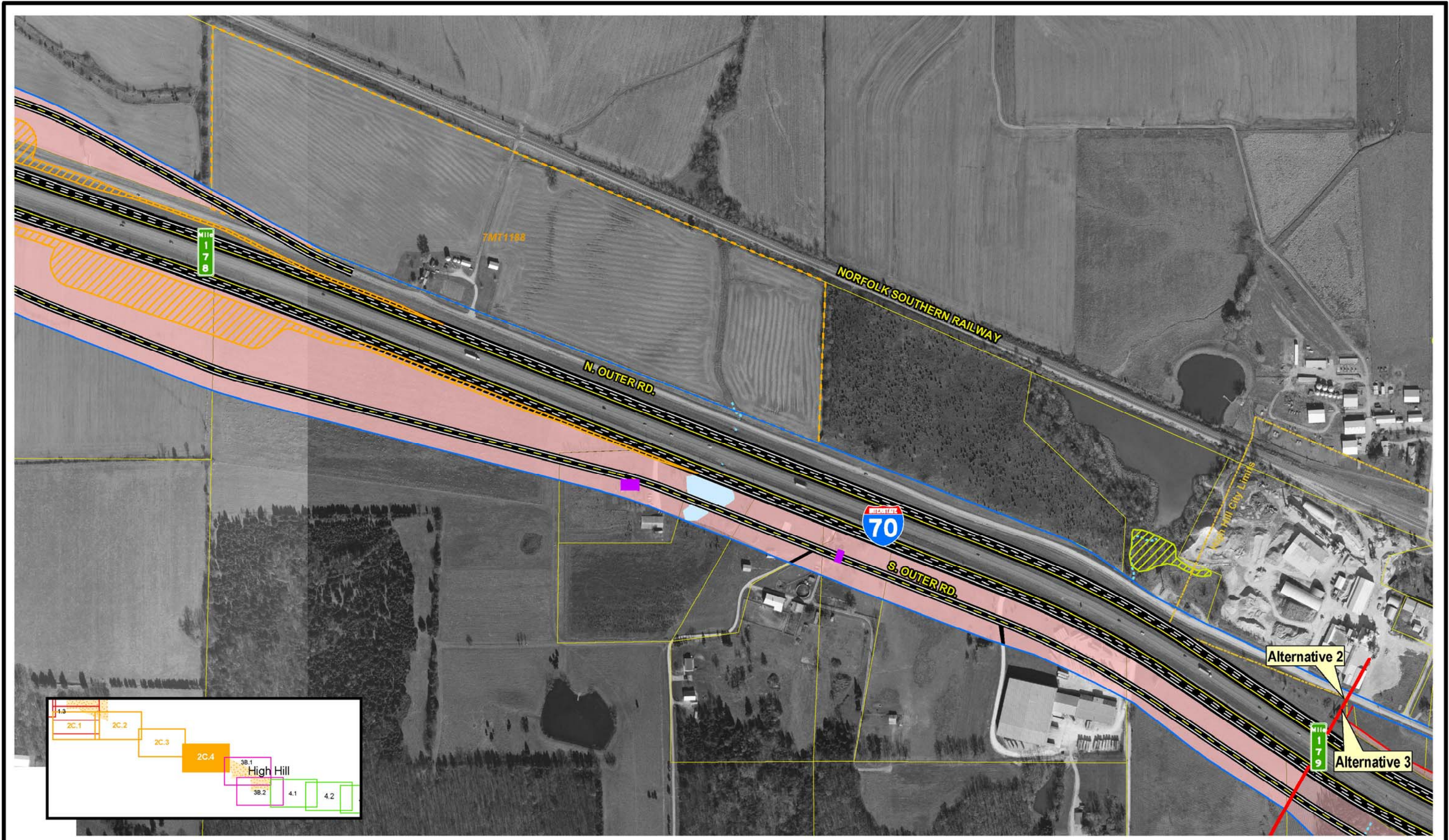
SIU  
**7**  
Route 19  
to  
Lake St. Louis

- |                           |             |                     |                             |  |                         |
|---------------------------|-------------|---------------------|-----------------------------|--|-------------------------|
| — Limited Access R/W      | City Limits | Schools             | Lakes                       | Existing Pavement to Remain                      | Intermittent Streams    |
| — Right-In, Right-Out R/W | Cemeteries  | Hazardous Materials | Jurisdictional Ponds        | NRHP Eligible Resource (w/MoDOT Resource Number) | Perennial Streams       |
| — Normal R/W              | Churches    | Parks               | Jurisdictional Wetlands     | Residential Displacement                         | Commercial Displacement |
| — Proposed Bridge         | Hospitals   | Floodplains         | Non-Jurisdictional Wetlands | Parcel Boundary                                  | Land Acquisition        |

Widening Improvements to Existing Corridor- Alternative 2C (Preferred)

EXHIBIT 2C.1





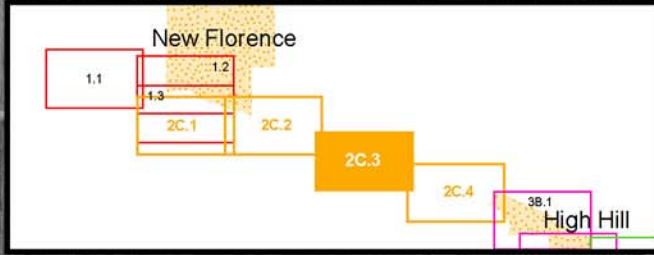
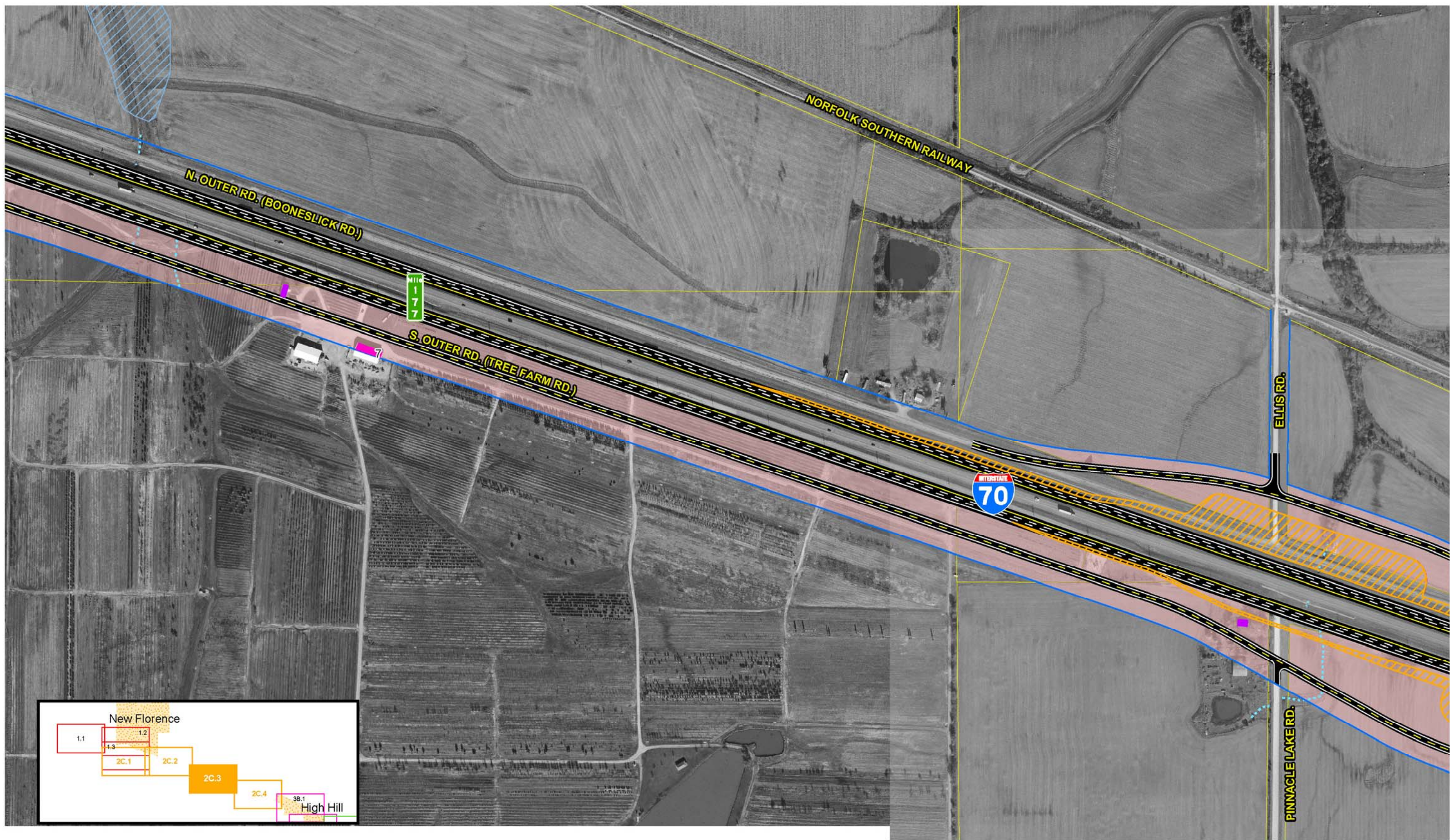
SIU  
**7**  
 Route 19  
 to  
 Lake St. Louis

- |                           |             |                     |                             |  |                          |
|---------------------------|-------------|---------------------|-----------------------------|--|--------------------------|
| — Limited Access R/W      | City Limits | Schools             | Lakes                       | Existing Pavement to Remain                      | Intermittent Streams     |
| — Right-In, Right-Out R/W | Cemeteries  | Hazardous Materials | Jurisdictional Ponds        | NRHP Eligible Resource (w/MoDOT Resource Number) | Perennial Streams        |
| — Normal R/W              | Churches    | Parks               | Jurisdictional Wetlands     | Proposed Weigh Station                           | Residential Displacement |
| — Proposed Bridge         | Hospitals   | Floodplains         | Non-Jurisdictional Wetlands | Parcel Boundary                                  | Commercial Displacement  |
|                           |             |                     |                             |  | Land Acquisition         |

Widening Improvements to Existing Corridor-  
**Alternative 2C (Preferred)**

EXHIBIT 2C.4

Scale: 1" = 400'



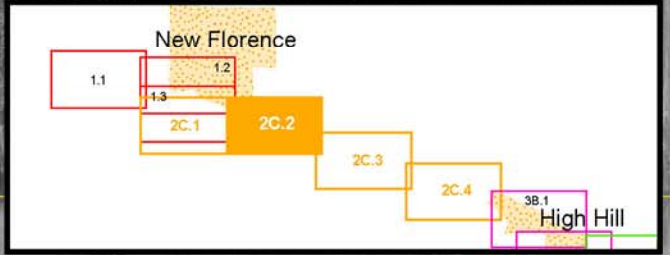
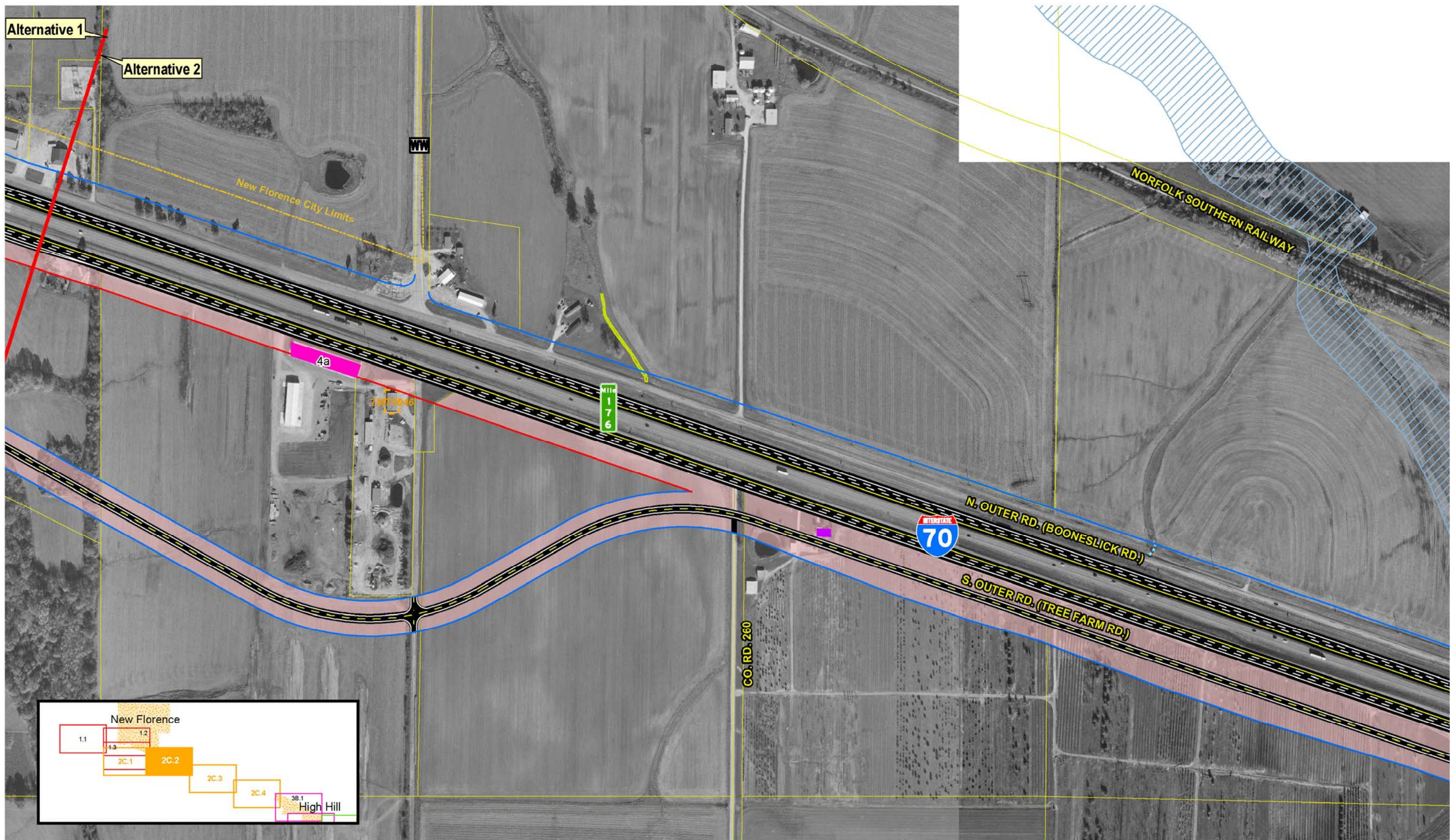
SIU  
**7**  
Route 19  
to  
Lake St. Louis

- |                           |               |                       |                               |  |                            |
|---------------------------|---------------|-----------------------|-------------------------------|--|----------------------------|
| — Limited Access R/W      | — City Limits | ▲ Schools             | — Lakes                       | — Existing Pavement to Remain                      | — Intermittent Streams     |
| — Right-In, Right-Out R/W | — Cemeteries  | ▲ Hazardous Materials | — Jurisdictional Ponds        | — NRHP Eligible Resource (w/MoDOT Resource Number) | — Perennial Streams        |
| — Normal R/W              | — Churches    | — Parks               | — Jurisdictional Wetlands     | — Proposed Weigh Station                           | — Residential Displacement |
| — Proposed Bridge         | — Hospitals   | — Floodplains         | — Non-Jurisdictional Wetlands | — Parcel Boundary                                  | — Commercial Displacement  |
|                           |               |                       |                               |  | — Land Acquisition         |

**Widening Improvements to Existing Corridor- Alternative 2C (Preferred)**

EXHIBIT  
**2C.3**





SIU  
7  
Route 19  
to  
Lake St. Louis

- |                           |             |                     |                             |  |                          |
|---------------------------|-------------|---------------------|-----------------------------|--|--------------------------|
| — Limited Access R/W      | City Limits | Schools             | Lakes                       | Existing Pavement to Remain                      | Intermittent Streams     |
| — Right-In, Right-Out R/W | Cemeteries  | Hazardous Materials | Jurisdictional Ponds        | NRHP Eligible Resource (w/MoDOT Resource Number) | Perennial Streams        |
| — Normal R/W              | Churches    | Parks               | Jurisdictional Wetlands     | Parcel Boundary                                  | Commercial Displacement  |
| — Proposed Bridge         | Hospitals   | Floodplains         | Non-Jurisdictional Wetlands |  | Residential Displacement |

Widening Improvements to Existing Corridor- Alternative 2C (Preferred)

EXHIBIT 2C.2

