

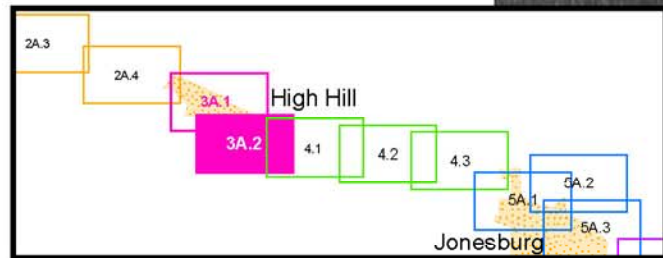
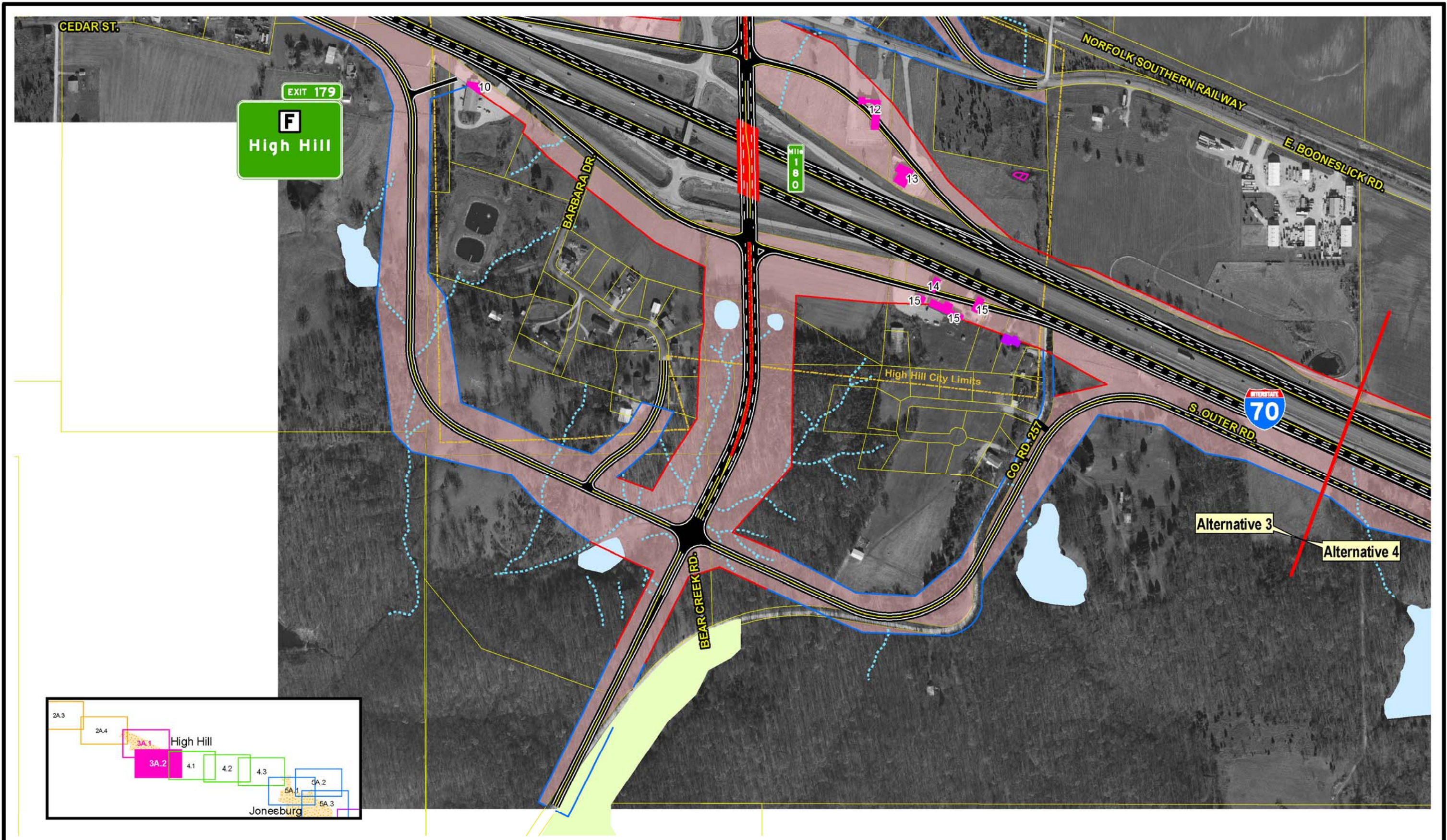
SIU  
**7**  
Route 19  
to  
Lake St. Louis

- |                           |               |                       |                               |  |                            |
|---------------------------|---------------|-----------------------|-------------------------------|--|----------------------------|
| — Limited Access R/W      | — City Limits | ▲ Schools             | — Lakes                       | — Existing Pavement to Remain                      | — Intermittent Streams     |
| — Right-In, Right-Out R/W | — Cemeteries  | ▲ Hazardous Materials | — Jurisdictional Ponds        | — NRHP Eligible Resource (w/MoDOT Resource Number) | — Perennial Streams        |
| — Normal R/W              | — Churches    | — Parks               | — Jurisdictional Wetlands     | — Parcel Boundary                                  | — Residential Displacement |
| — Proposed Bridge         | — Hospitals   | — Floodplains         | — Non-Jurisdictional Wetlands |  | — Commercial Displacement  |

**Widening Improvements to Existing Corridor - Alternative 3A**

Scale: 1" = 400'

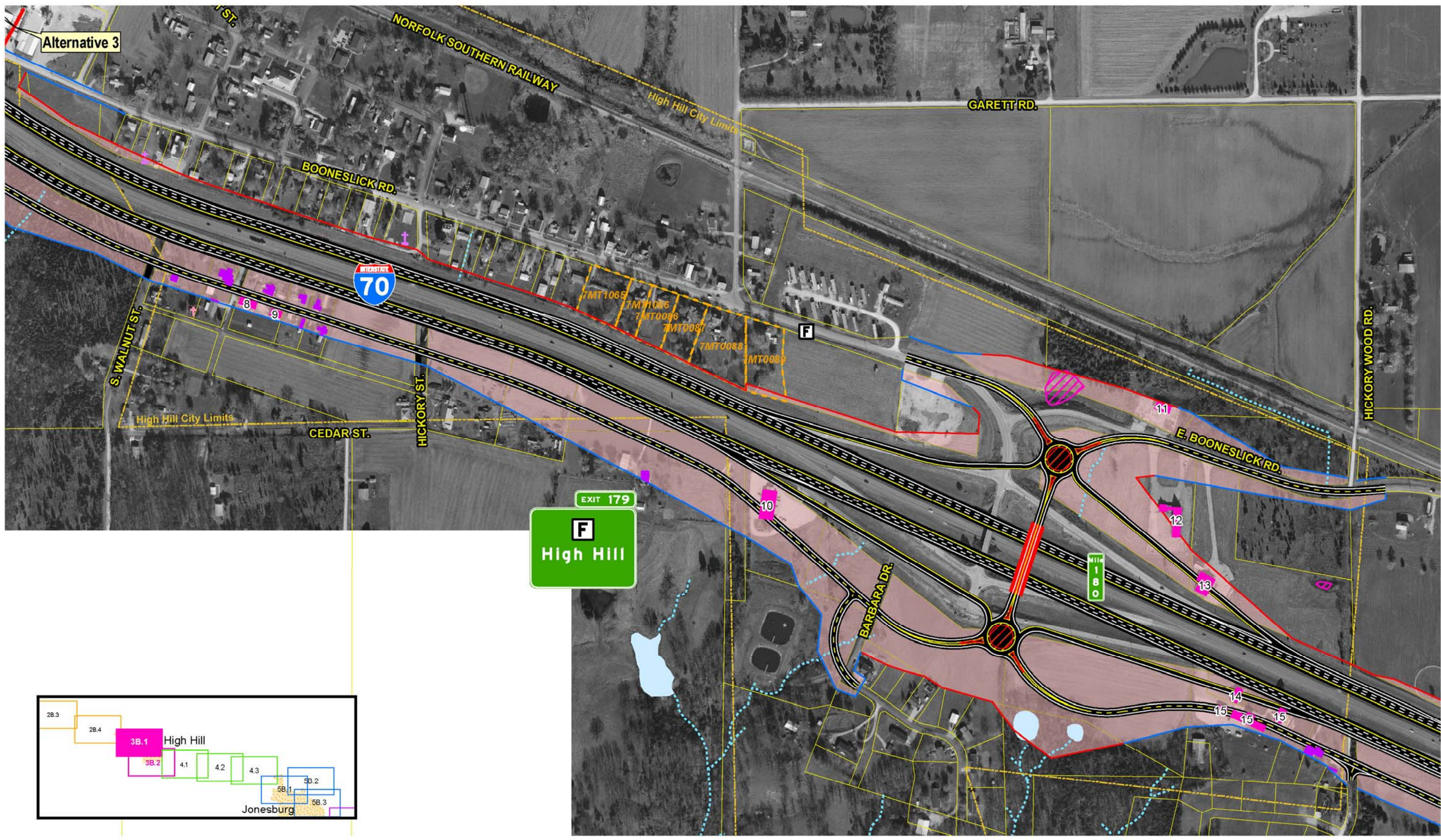
**EXHIBIT 3A.1**



		<b>SIU 7</b> Route 19 to Lake St. Louis	Limited Access R/W	City Limits	Schools	Lakes	Existing Pavement to Remain	Intermittent Streams
			Right-In, Right-Out R/W	Cemeteries	Hazardous Materials	Jurisdictional Ponds	NRHP Eligible Resource (w/MoDOT Resource Number)	Perennial Streams
	Normal R/W	Churches	Parks	Jurisdictional Wetlands	Conservation Reserve Program	Residential Displacement	Commercial Displacement	Scale: 1" = 400'
	Proposed Bridge	Hospitals	Floodplains	Non-Jurisdictional Wetlands	Parcel Boundary	Land Acquisition		

**Widening Improvements to Existing Corridor - Alternative 3A**

**EXHIBIT 3A.2**



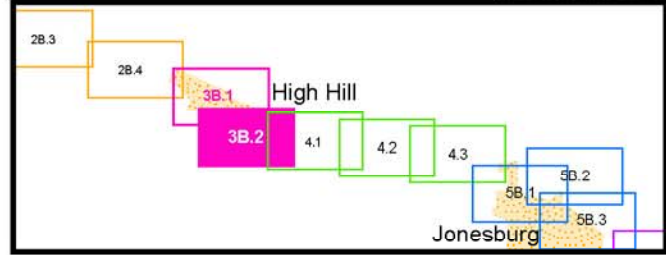
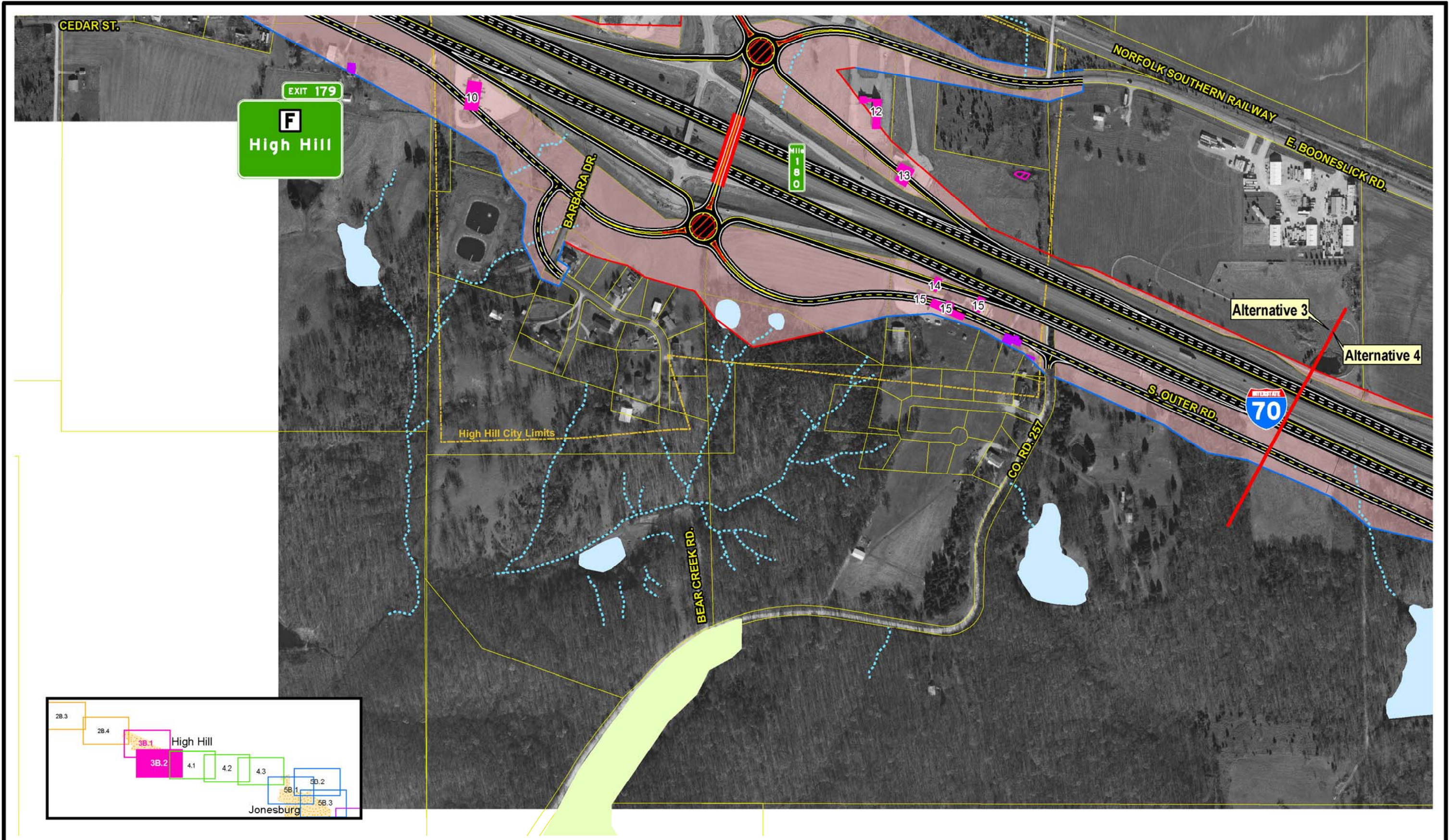
SIU  
**7**  
Route 19  
to  
Lake St. Louis

— Limited Access R/W	City Limits	Schools	Lakes	Existing Pavement to Remain	Intermittent Streams
— Right-In, Right-Out R/W	Cemeteries	Hazardous Materials	Jurisdictional Ponds	NRHP Eligible Resource (w/MoDOT Resource Number)	Perennial Streams
— Normal R/W	Churches	Parks	Jurisdictional Wetlands	Parcel Boundary	Residential Displacement
— Proposed Bridge	Hospitals	Floodplains	Non-Jurisdictional Wetlands		Commercial Displacement
					Land Acquisition

Scale: 1" = 400'

**Widening Improvements to Existing Corridor- Alternative 3B (Preferred)**

**EXHIBIT 3B.1**



SIU  
**7**  
 Route 19  
 to  
 Lake St. Louis

- |   |  |   |   |   |
|---|--|---|---|---|
| <ul style="list-style-type: none"> <li><span style="color: red;">—</span> Limited Access R/W</li> <li><span style="color: green;">—</span> Right-In, Right-Out R/W</li> <li><span style="color: blue;">—</span> Normal R/W</li> <li><span style="color: red;">—</span> Proposed Bridge</li> </ul> | <ul style="list-style-type: none"> <li><span style="border: 1px dashed yellow;"> </span> City Limits</li> <li><span style="border: 1px dashed pink;"> </span> Cemeteries</li> <li><span style="color: purple;">+</span> Churches</li> <li><span style="color: blue;">+</span> Hospitals</li> </ul> | <ul style="list-style-type: none"> <li><span style="color: red;">▲</span> Schools</li> <li><span style="color: brown;">▲</span> Hazardous Materials</li> <li><span style="color: green;">■</span> Parks</li> <li><span style="border: 1px dashed blue;"> </span> Floodplains</li> </ul> | <ul style="list-style-type: none"> <li><span style="color: lightblue;">■</span> Lakes</li> <li><span style="color: lightblue;">■</span> Jurisdictional Ponds</li> <li><span style="border: 1px dashed yellow;"> </span> Jurisdictional Wetlands</li> <li><span style="border: 1px dashed pink;"> </span> Non-Jurisdictional Wetlands</li> <li><span style="border: 1px dashed green;"> </span> Conservation Reserve Program</li> <li><span style="border: 1px dashed yellow;"> </span> Parcel Boundary</li> </ul> | <ul style="list-style-type: none"> <li><span style="border: 1px dashed grey;"> </span> Existing Pavement to Remain</li> <li><span style="border: 1px dashed orange;"> </span> NRHP Eligible Resource (w/MoDOT Resource Number)</li> <li><span style="border: 1px dashed green;"> </span> Intermittent Streams</li> <li><span style="border: 1px dashed blue;"> </span> Perennial Streams</li> <li><span style="color: purple;">■</span> Residential Displacement</li> <li><span style="color: pink;">■</span> Commercial Displacement</li> <li><span style="color: red;">■</span> Land Acquisition</li> </ul> |
|---|--|---|---|---|

**Widening Improvements to Existing Corridor- Alternative 3B (Preferred)**

EXHIBIT **3B.2**

Scale: 1" = 400'