

SIU
7
Route 19
to
Lake St. Louis

| | | | | | |
|---------------------------|---------------|-----------------------|-------------------------------|--|----------------------------|
| — Limited Access R/W | — City Limits | ▲ Schools | — Lakes | — Existing Pavement to Remain | — Intermittent Streams |
| — Right-In, Right-Out R/W | — Cemeteries | ▲ Hazardous Materials | — Jurisdictional Ponds | — NRHP Eligible Resource (w/MoDOT Resource Number) | — Perennial Streams |
| — Normal R/W | — Churches | — Parks | — Jurisdictional Wetlands | — Parcel Boundary | — Residential Displacement |
| — Proposed Bridge | — Hospitals | — Floodplains | — Non-Jurisdictional Wetlands | | — Commercial Displacement |
| | | | | | — Land Acquisition |

Widening Improvements to Existing Corridor- Alternative 5A (Preferred)

Scale: 1" = 400'

EXHIBIT 5A.1



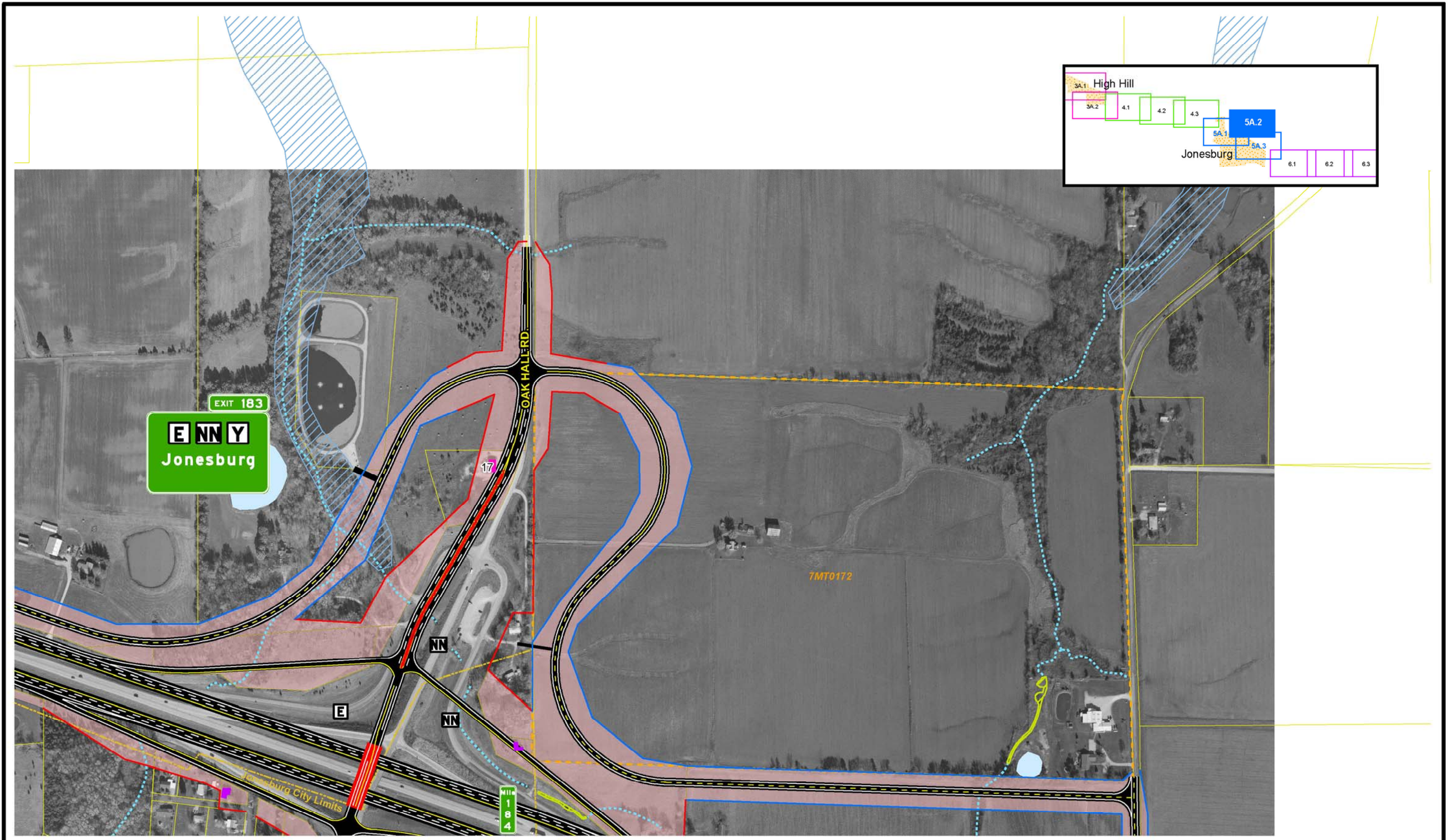
SIU
7
 Route 19
 to
 Lake St. Louis

- | | | | | |
|---|--|--|---|--|
| <ul style="list-style-type: none"> — Limited Access R/W — Right-In, Right-Out R/W — Normal R/W — Proposed Bridge | <ul style="list-style-type: none"> City Limits Cemeteries Churches Hospitals | <ul style="list-style-type: none"> ▲ Schools ▲ Hazardous Materials ■ Parks ■ Floodplains | <ul style="list-style-type: none"> ■ Lakes ■ Jurisdictional Ponds ■ Jurisdictional Wetlands ■ Non-Jurisdictional Wetlands Parcel Boundary | <ul style="list-style-type: none"> ■ Existing Pavement to Remain NRHP Eligible Resource (w/MoDOT Resource Number) Intermittent Streams — Perennial Streams ■ Residential Displacements ■ Commercial Displacements ■ Land Acquisition |
|---|--|--|---|--|

Widening Improvements to Existing Corridor- Alternative 5A (Preferred)

EXHIBIT **5A.3**

Scale: 1" = 400'

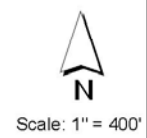


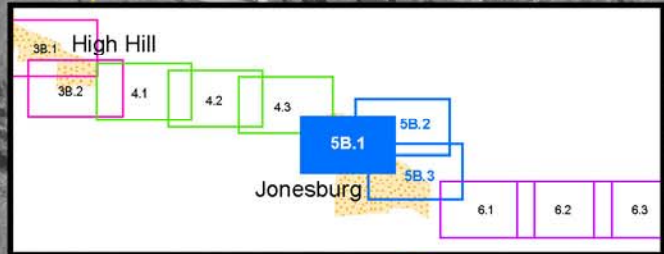
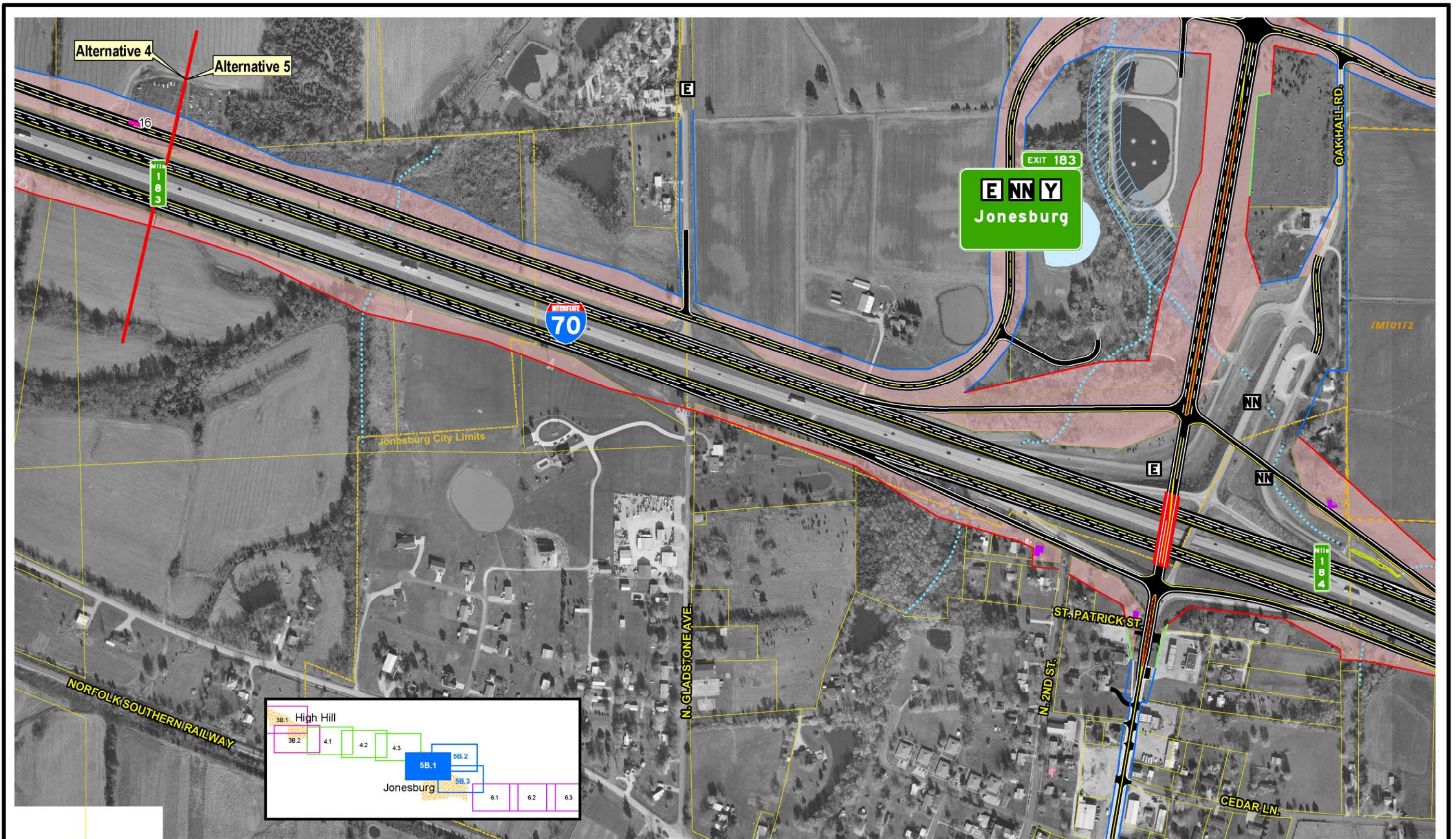
SIU
7
Route 19
to
Lake St. Louis

- | | | | | | |
|---------------------------|---------------|-----------------------|-------------------------------|--|-----------------------------|
| — Limited Access R/W | — City Limits | ▲ Schools | — Lakes | — Existing Pavement to Remain | — Intermittent Streams |
| — Right-In, Right-Out R/W | — Cemeteries | ▲ Hazardous Materials | — Jurisdictional Ponds | — NRHP Eligible Resource (w/MoDOT Resource Number) | — Perennial Streams |
| — Normal R/W | — Churches | ▲ Parks | — Jurisdictional Wetlands | — Parcel Boundary | — Residential Displacements |
| — Proposed Bridge | — Hospitals | — Floodplains | — Non-Jurisdictional Wetlands | | — Commercial Displacements |
| | | | | | — Land Acquisition |

Widening Improvements to
Existing Corridor-
Alternative 5A (Preferred)

EXHIBIT
5A.2





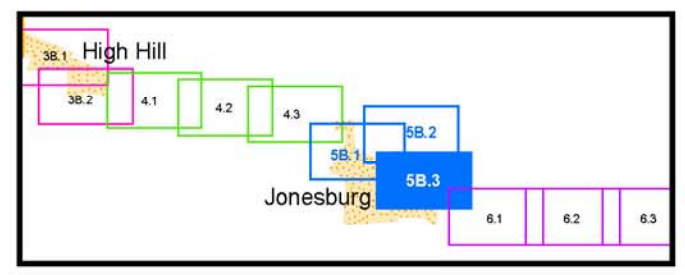
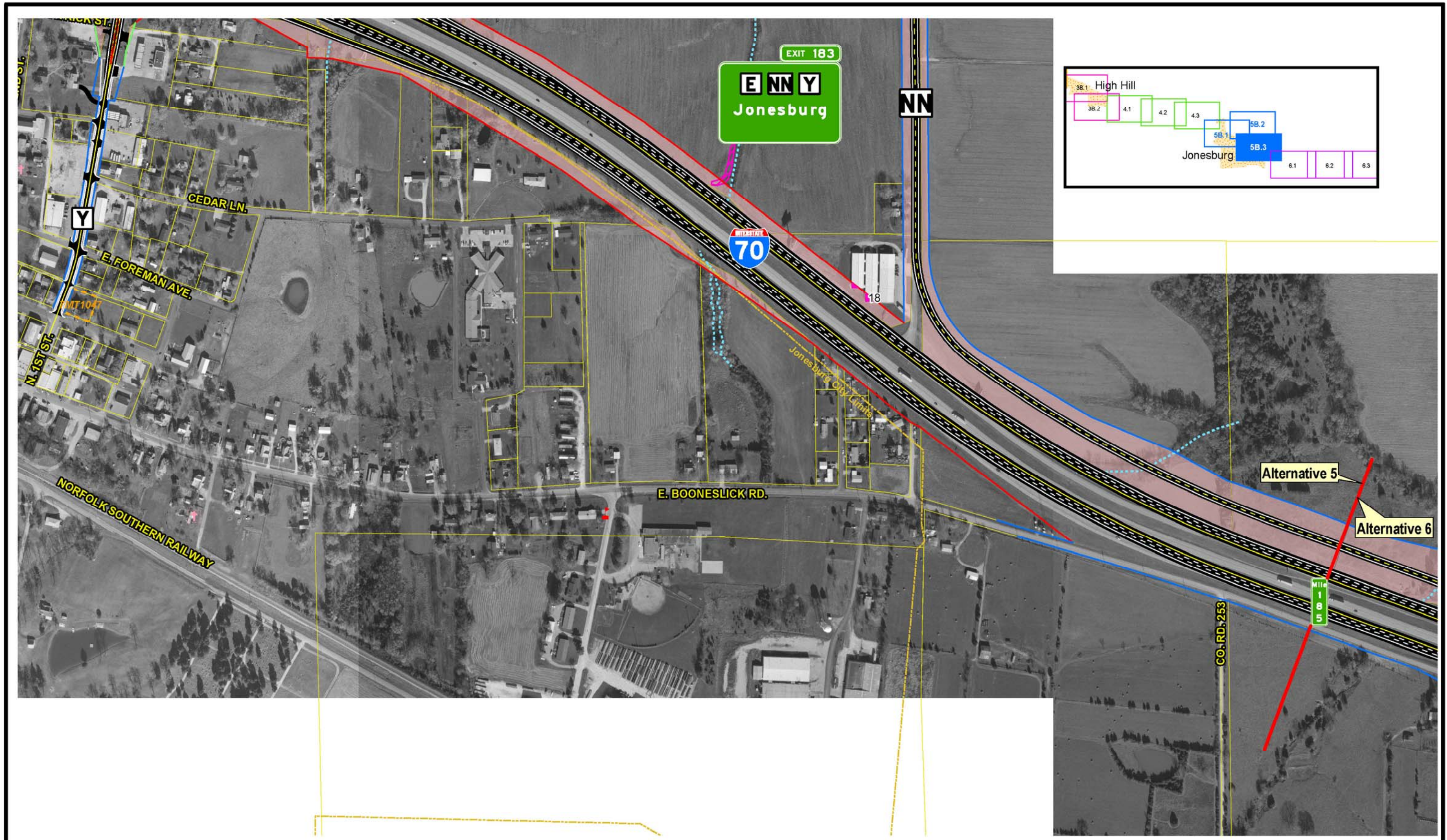
SIU
7
 Route 19
 to
 Lake St. Louis

| | | | | | |
|---------------------------|---------------|-----------------------|-------------------------------|--|-----------------------------|
| — Limited Access R/W | — City Limits | ▲ Schools | — Lakes | — Existing Pavement to Remain | — Intermittent Streams |
| — Right-In, Right-Out R/W | — Cemeteries | ▲ Hazardous Materials | — Jurisdictional Ponds | — NRHP Eligible Resource (w/MoDOT Resource Number) | — Perennial Streams |
| — Normal R/W | — Churches | — Parks | — Jurisdictional Wetlands | — Parcel Boundary | — Residential Displacements |
| — Proposed Bridge | — Hospitals | — Floodplains | — Non-Jurisdictional Wetlands | | — Commercial Displacements |
| | | | | | — Land Acquisition |

Widening Improvements to Existing Corridor - Alternative 5B

EXHIBIT 5B.1

Scale: 1" = 400'

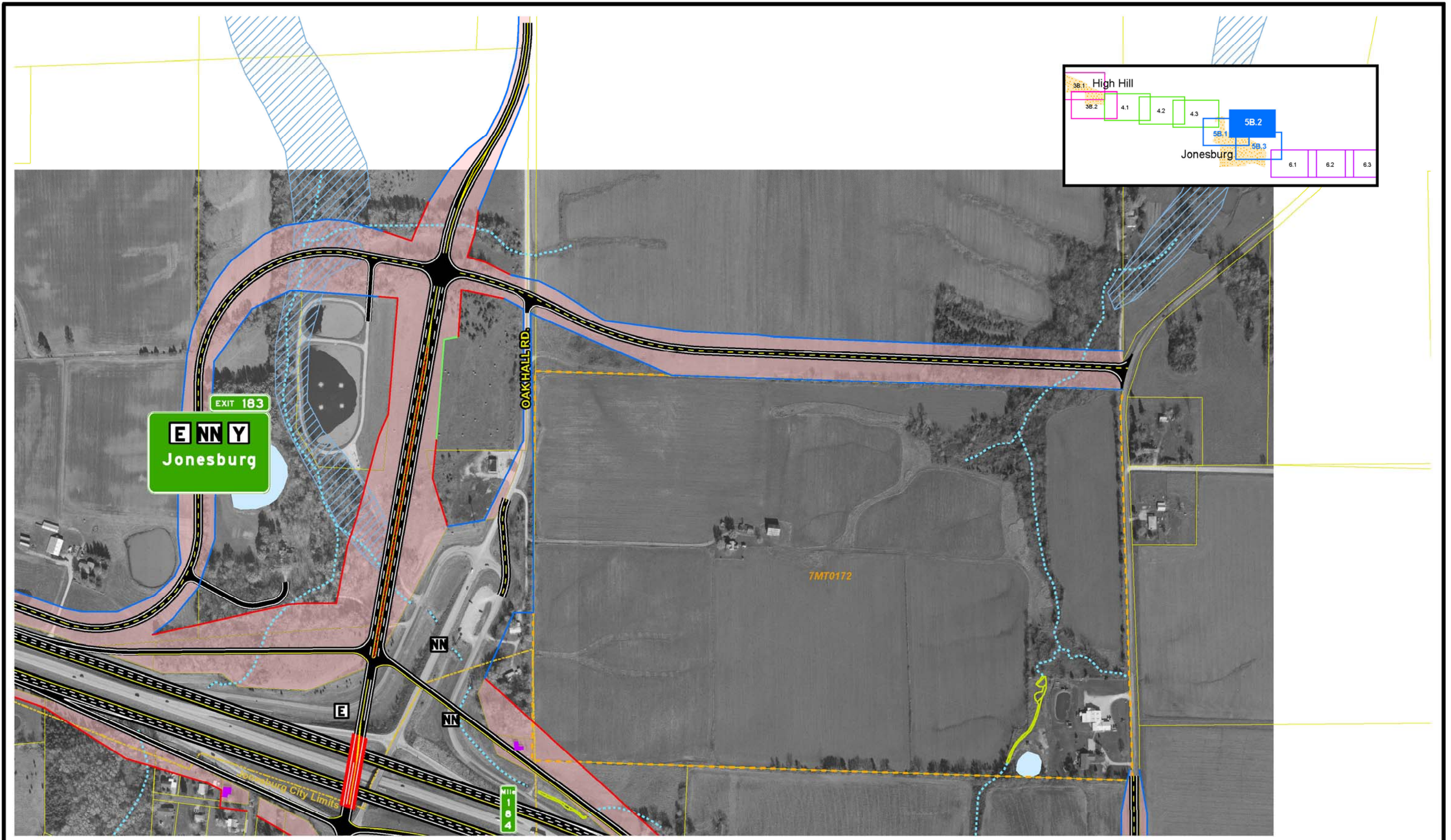


| | | | | | | | |
|----------------------------------|--|-------------------------|-----------------------------|--------------------------|----------------------|--|----------------------|
| IMPROVE i70 | SIU 7 Route 19 to Lake St. Louis | Limited Access R/W | City Limits | Schools | Lakes | Existing Pavement to Remain | Intermittent Streams |
| | | Right-In, Right-Out R/W | Cemeteries | Hazardous Materials | Jurisdictional Ponds | NRHP Eligible Resource (w/MoDOT Resource Number) | Perennial Streams |
| Normal R/W | Churches | Parks | Jurisdictional Wetlands | Commercial Displacements | Parcel Boundary | Residential Displacements | Land Acquisition |
| Proposed Bridge | Hospitals | Floodplains | Non-Jurisdictional Wetlands | | | | |

Scale: 1" = 400'

Widening Improvements to Existing Corridor - Alternative 5B

EXHIBIT 5B.3



| | | | | | | | |
|------------------------|--|-------------------------|-----------------------------|---------------------|--------------------------|--|----------------------|
| IMPROVE | SIU 7 Route 19 to Lake St. Louis | Limited Access R/W | City Limits | Schools | Lakes | Existing Pavement to Remain | Intermittent Streams |
| | | Right-In, Right-Out R/W | Cemeteries | Hazardous Materials | Jurisdictional Ponds | NRHP Eligible Resource (w/MoDOT Resource Number) | Perennial Streams |
| Normal R/W | Churches | Parks | Jurisdictional Wetlands | Parcel Boundary | Commercial Displacements | Commercial Displacements | Land Acquisition |
| Proposed Bridge | Hospitals | Floodplains | Non-Jurisdictional Wetlands | | | | Scale: 1" = 400' |

Widening Improvements to Existing Corridor- Alternative 5B

EXHIBIT 5B.2