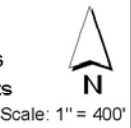


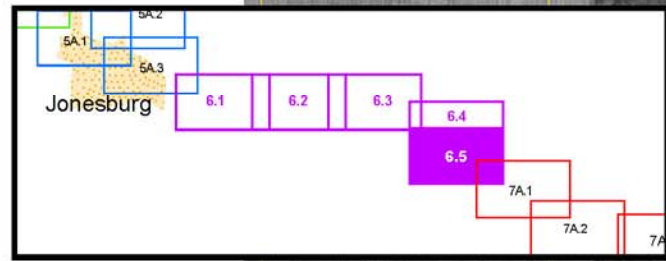
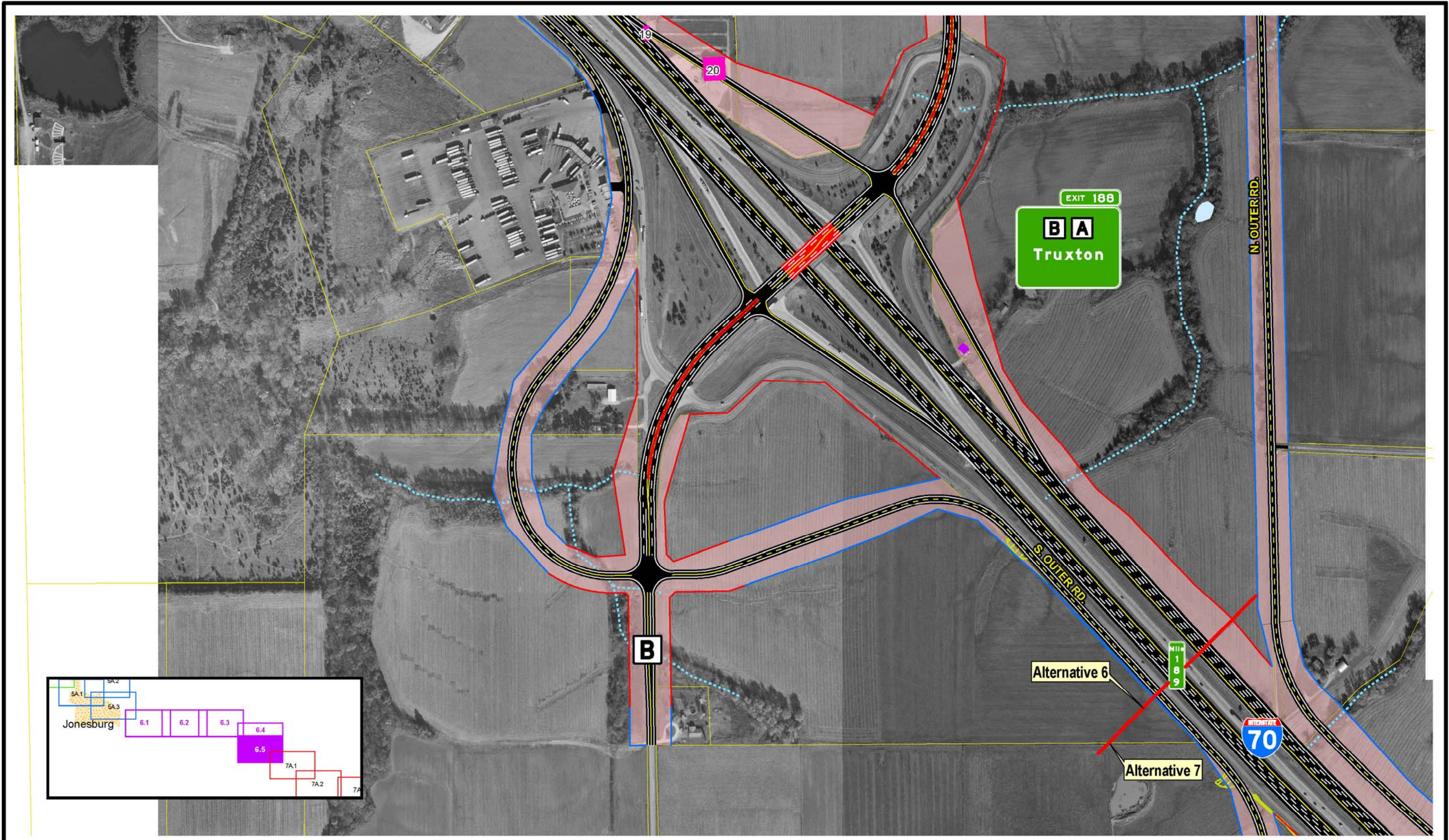
SIU
7
Route 19
to
Lake St. Louis

- | | | | | | |
|---------------------------|---------------|-----------------------|-------------------------------|----------------------------------------------------|-----------------------------|
| — Limited Access R/W | — City Limits | ▲ Schools | — Lakes | — Existing Pavement to Remain | — Intermittent Streams |
| — Right-In, Right-Out R/W | — Cemeteries | ▲ Hazardous Materials | — Jurisdictional Ponds | — NRHP Eligible Resource (w/MoDOT Resource Number) | — Perennial Streams |
| — Normal R/W | — Churches | — Parks | — Jurisdictional Wetlands | — Parcel Boundary | — Residential Displacements |
| — Proposed Bridge | — Hospitals | — Floodplains | — Non-Jurisdictional Wetlands | | — Commercial Displacements |
| | | | | | — Land Acquisition |

Widening Improvements to
Existing Corridor-
Alternative 6 (Preferred)

EXHIBIT
6.1





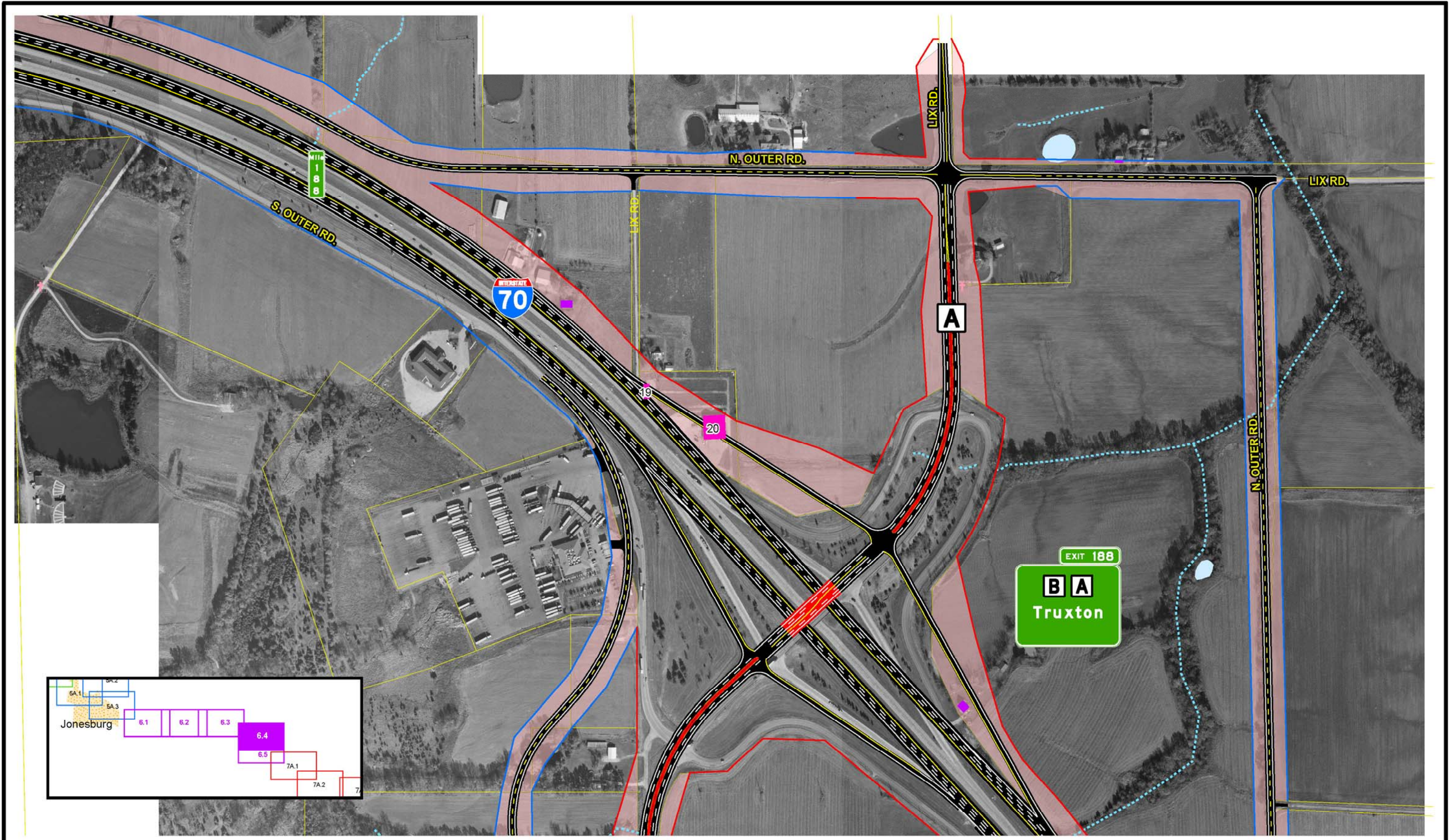
SIU
7
 Route 19
 to
 Lake St. Louis

- | | | | | | |
|---------------------------|---------------|-----------------------|-------------------------------|----------------------------------------------------|-----------------------------|
| — Limited Access R/W | — City Limits | ▲ Schools | — Lakes | — Existing Pavement to Remain | — Intermittent Streams |
| — Right-In, Right-Out R/W | — Cemeteries | ▲ Hazardous Materials | — Jurisdictional Ponds | — NRHP Eligible Resource (w/MoDOT Resource Number) | — Perennial Streams |
| — Normal R/W | — Churches | — Parks | — Jurisdictional Wetlands | — Parcel Boundary | — Residential Displacements |
| — Proposed Bridge | — Hospitals | — Floodplains | — Non-Jurisdictional Wetlands | | — Commercial Displacements |
| | | | | | — Land Acquisition |

Widening Improvements to Existing Corridor- Alternative 6 (Preferred)

EXHIBIT 6.5

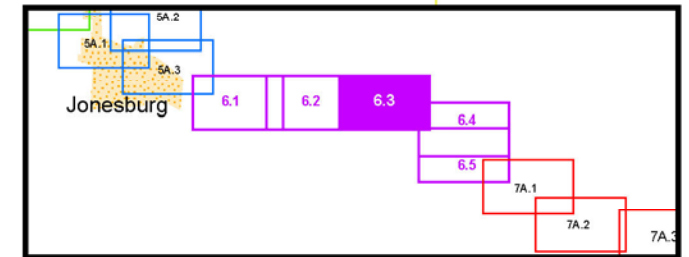
Scale: 1" = 400'



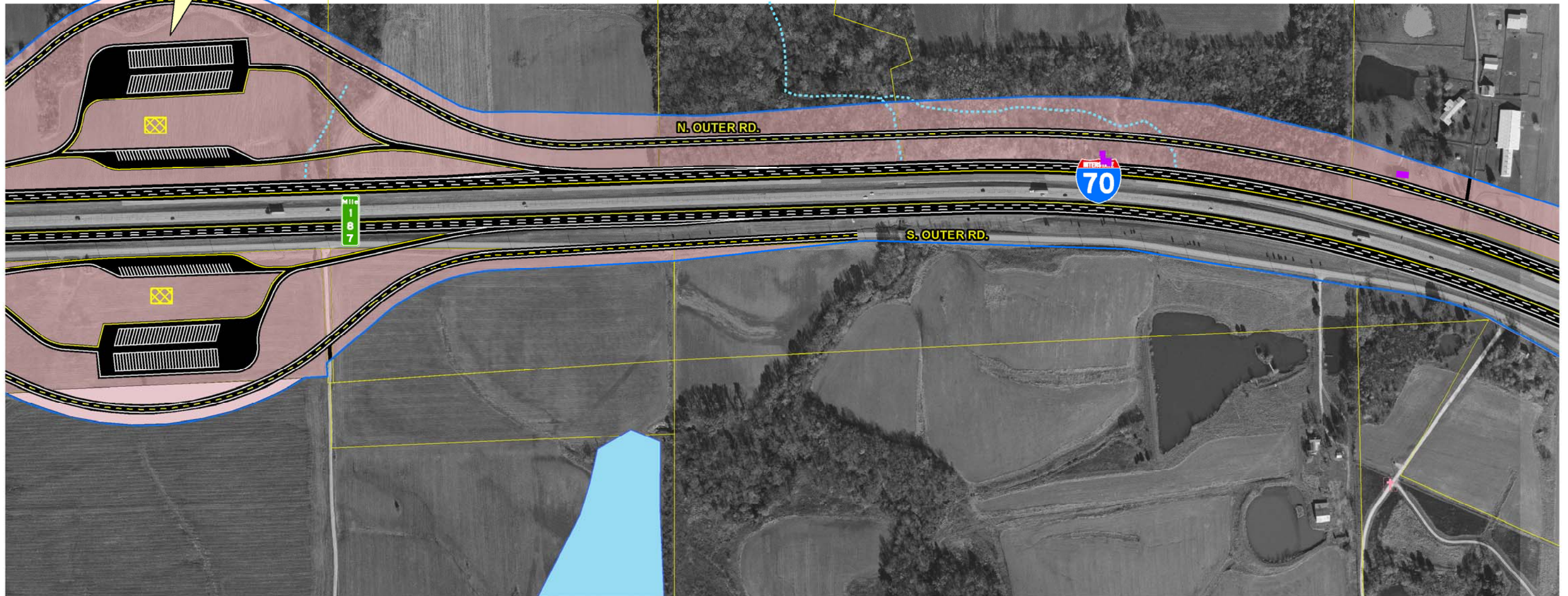
		SIU 7 Route 19 to Lake St. Louis		Limited Access RW	City Limits	Schools	Lakes	Existing Pavement to Remain	Intermittent Streams
		Right-In, Right-Out RW	Cemeteries	Hazardous Materials	Jurisdictional Ponds	NRHP Eligible Resource (w/MoDOT Resource Number)	Churches	Jurisdictional Wetlands	Perennial Streams
		Hospitals	Parks	Non-Jurisdictional Wetlands	Floodplains	Parcel Boundary	Commercial Displacements	Land Acquisition	Scale: 1" = 400'

Widening Improvements to Existing Corridor- Alternative 6 (Preferred)

EXHIBIT 6.4



Future Proposed Rest Area/Welcome Center



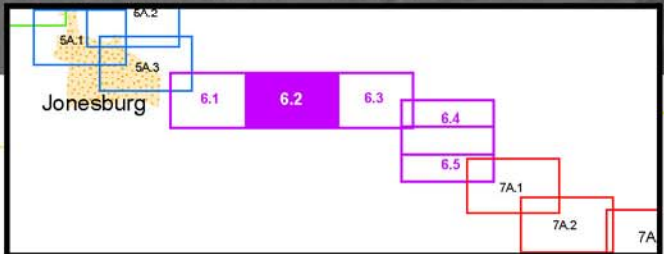
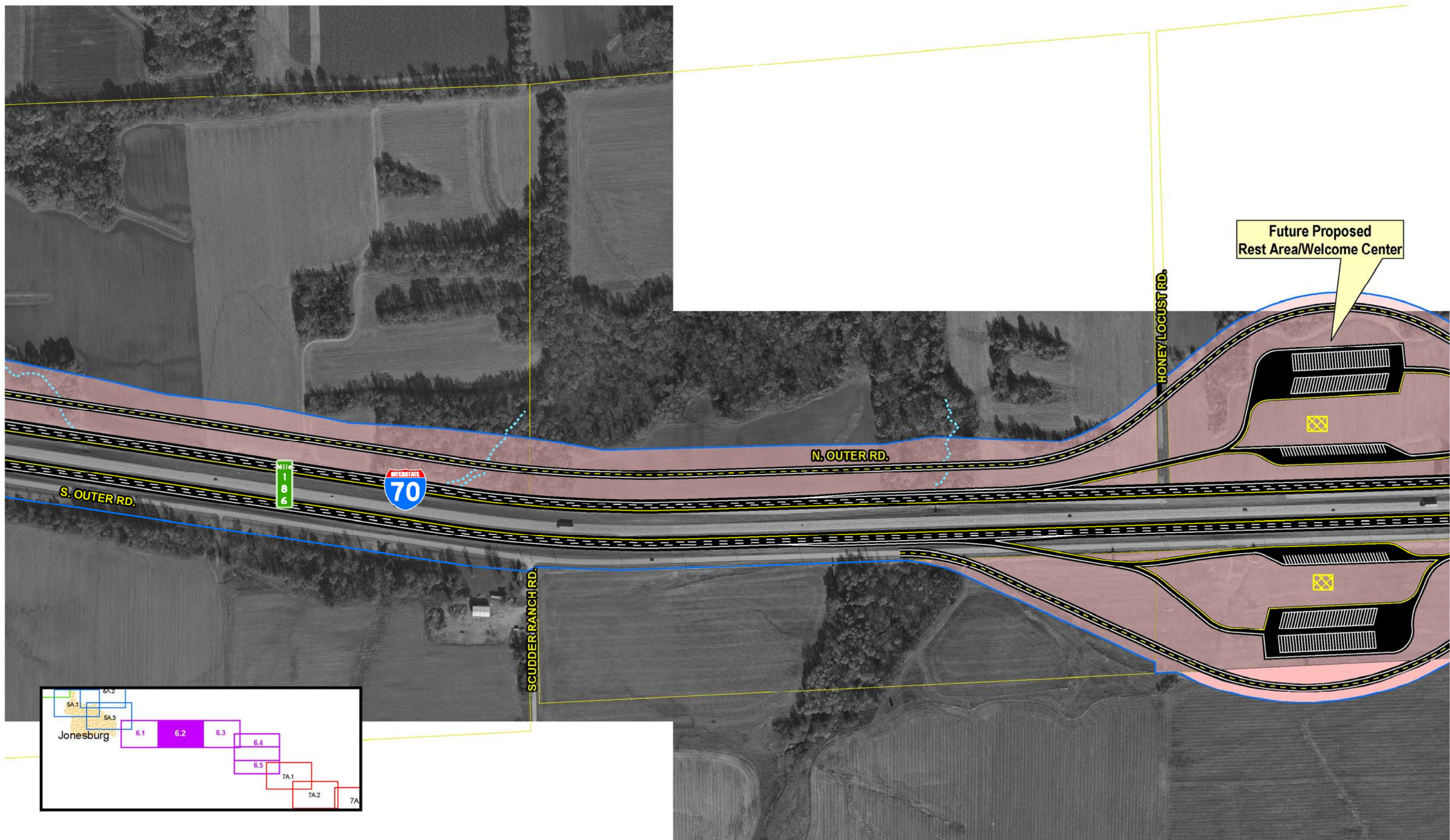
SIU
7
Route 19
to
Lake St. Louis

- Limited Access R/W
- Right-In, Right-Out R/W
- Normal R/W
- Proposed Bridge
- City Limits
- Cemeteries
- Churches
- Hospitals
- Schools
- Hazardous Materials
- Parks
- Floodplains
- Lakes
- Jurisdictional Ponds
- Jurisdictional Wetlands
- Non-Jurisdictional Wetlands
- Existing Pavement to Remain
- NRHP Eligible Resource (w/MoDOT Resource Number)
- Parcel Boundary
- Proposed Rest Area/Welcome Center
- Intermittent Streams
- Perennial Streams
- Commercial Displacements
- Residential Displacements
- Land Acquisition

Widening Improvements to Existing Corridor- Alternative 6 (Preferred)

EXHIBIT 6.3





SIU
7
 Route 19
 to
 Lake St. Louis

- | | | | | | |
|---------------------------|---------------|-----------------------|-------------------------------|----------------------------------------------------|-----------------------------|
| — Limited Access R/W | — City Limits | ▲ Schools | — Lakes | — Existing Pavement to Remain | — Intermittent Streams |
| — Right-In, Right-Out R/W | — Cemeteries | ▲ Hazardous Materials | — Jurisdictional Ponds | — NRHP Eligible Resource (w/MoDOT Resource Number) | — Perennial Streams |
| — Normal R/W | — Churches | — Parks | — Jurisdictional Wetlands | — Parcel Boundary | — Residential Displacements |
| — Proposed Bridge | — Hospitals | — Floodplains | — Non-Jurisdictional Wetlands | — Proposed Rest Area/Welcome Center | — Commercial Displacements |
| | | | | | — Land Acquisition |

Widening Improvements to
 Existing Corridor-
 Alternative 6 (Preferred)

EXHIBIT
6.2

