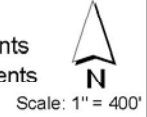


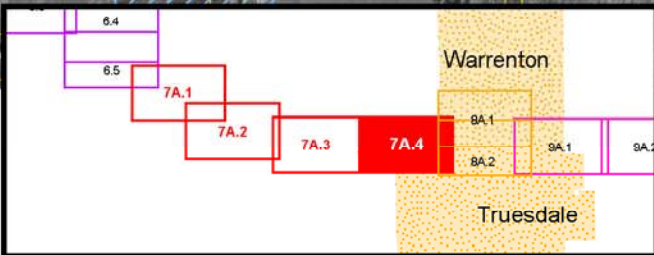
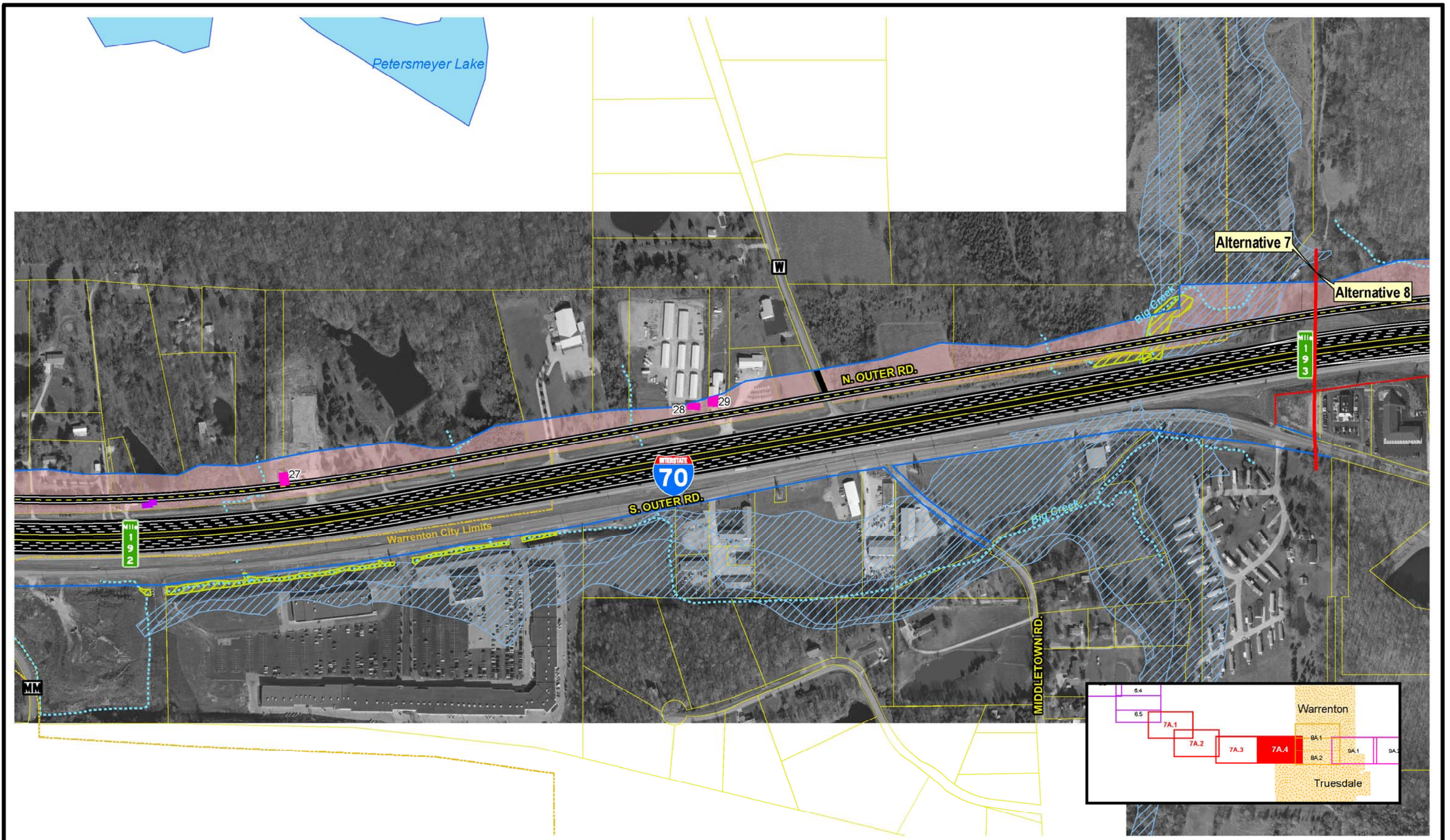
SIU
7
 Route 19
 to
 Lake St. Louis

- | | | | | | |
|---|--|--|---|---|--|
| <ul style="list-style-type: none"> — Limited Access R/W — Right-In, Right-Out R/W — Normal R/W — Proposed Bridge | <ul style="list-style-type: none"> City Limits Cemeteries Churches + Hospitals | <ul style="list-style-type: none"> ▲ Schools ▲ Hazardous Materials ■ Parks Floodplains | <ul style="list-style-type: none"> ■ Lakes ■ Jurisdictional Ponds Jurisdictional Wetlands Non-Jurisdictional Wetlands | <ul style="list-style-type: none"> ■ Existing Pavement to Remain NRHP Eligible Resource ■ Land Acquisition (w/MoDOT Resource Number) Parcel Boundary | <ul style="list-style-type: none"> — Intermittent Streams — Perennial Streams ■ Residential Displacements ■ Commercial Displacements ■ Land Acquisition |
|---|--|--|---|---|--|

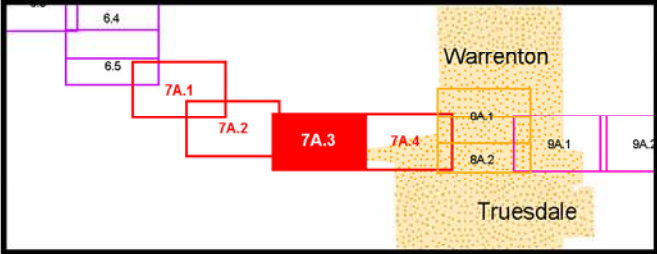
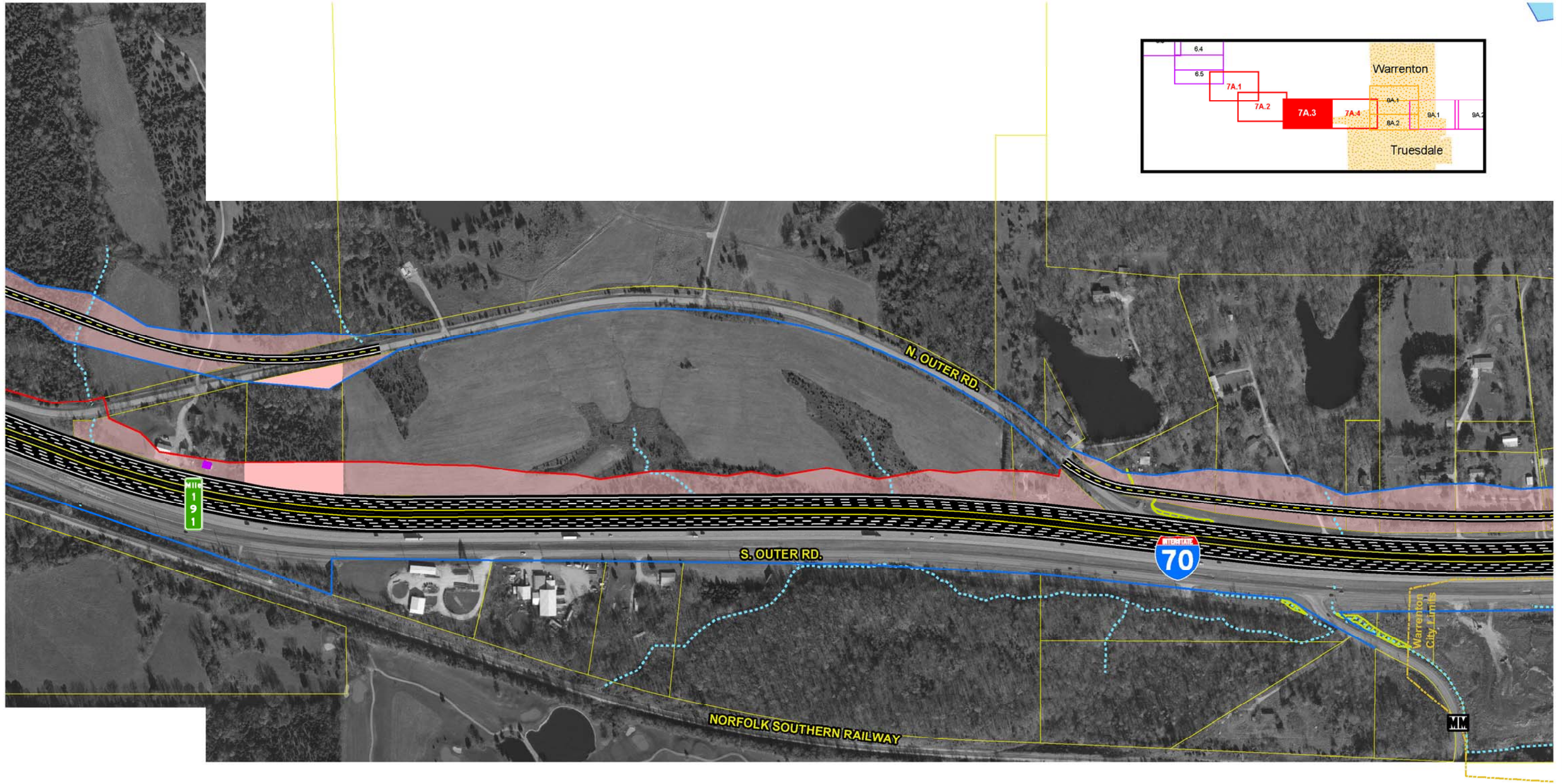
Widening Improvements to Existing Corridor- Alternative 7A (Preferred)

EXHIBIT
7A.1





	SIU 7 Route 19 to Lake St. Louis	Limited Access R/W Right-In, Right-Out R/W Normal R/W Proposed Bridge	City Limits Cemeteries Churches Hospitals	Schools Hazardous Materials Parks Floodplains	Lakes Jurisdictional Ponds Jurisdictional Wetlands Non-Jurisdictional Wetlands	Existing Pavement to Remain NRHP Eligible Resource (w/MoDOT Resource Number) Parcel Boundary	Intermittent Streams Perennial Streams Residential Displacements Commercial Displacements Land Acquisition	 Scale: 1" = 400'	Widening Improvements to Existing Corridor- Alternative 7A (Preferred)	EXHIBIT 7A.4



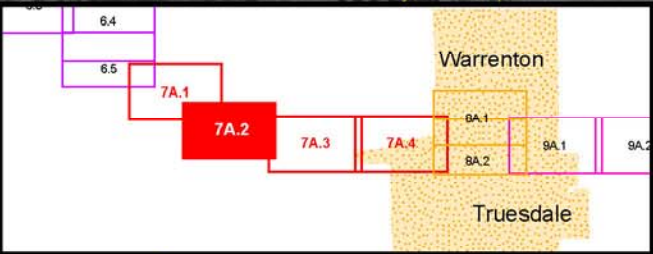
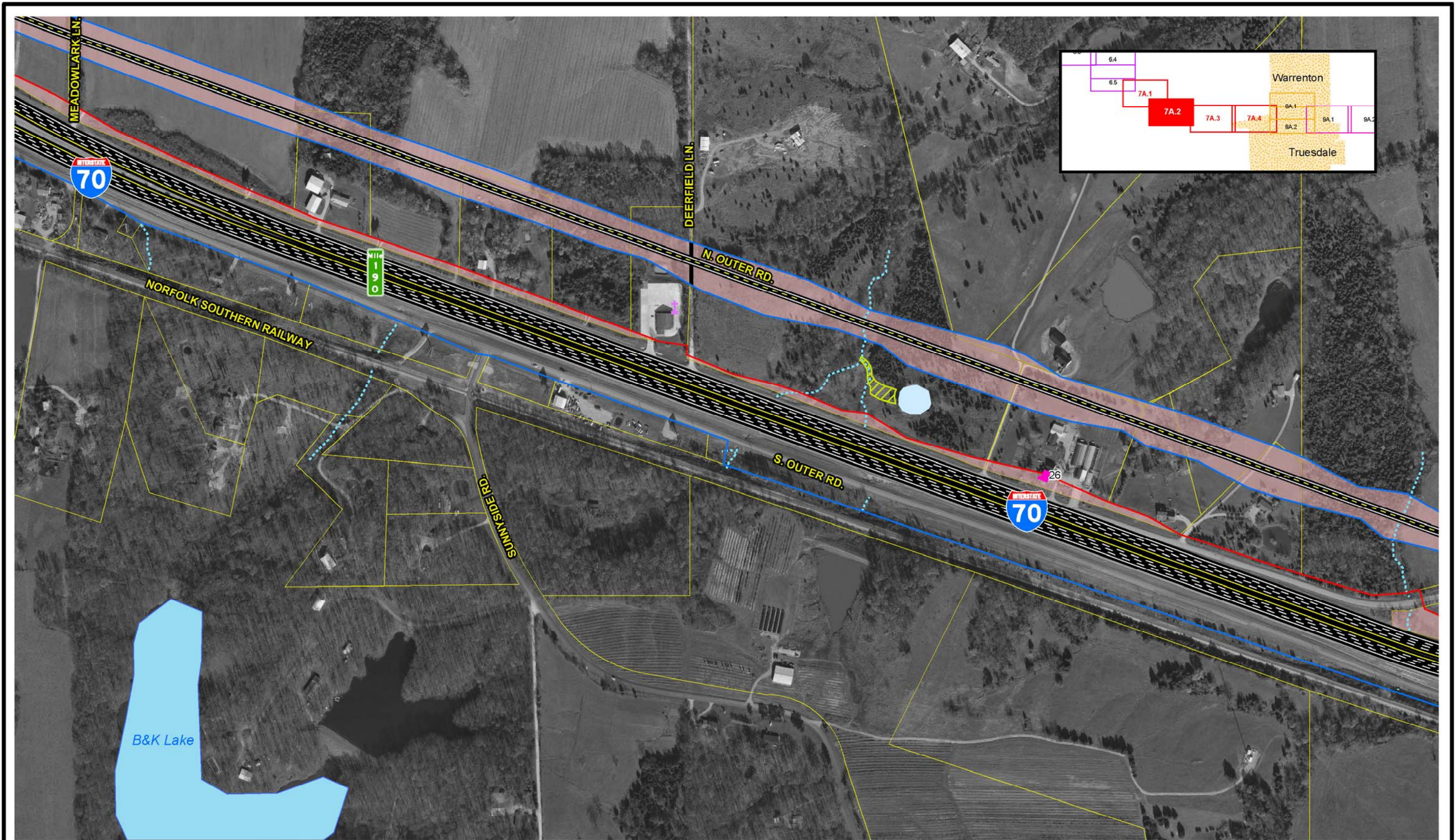
SIU
7
Route 19
to
Lake St. Louis

- | | | | | | |
|---------------------------|---------------|-----------------------|-------------------------------|--|-----------------------------|
| — Limited Access R/W | — City Limits | ▲ Schools | — Lakes | — Existing Pavement to Remain | — Intermittent Streams |
| — Right-In, Right-Out R/W | — Cemeteries | ▲ Hazardous Materials | — Jurisdictional Ponds | — NRHP Eligible Resource (w/MoDOT Resource Number) | — Perennial Streams |
| — Normal R/W | — Churches | — Parks | — Jurisdictional Wetlands | — Parcel Boundary | — Residential Displacements |
| — Proposed Bridge | — Hospitals | — Floodplains | — Non-Jurisdictional Wetlands | | — Commercial Displacements |
| | | | | | — Land Acquisition |



Widening Improvements to Existing Corridor- Alternative 7A (Preferred)

EXHIBIT 7A.3



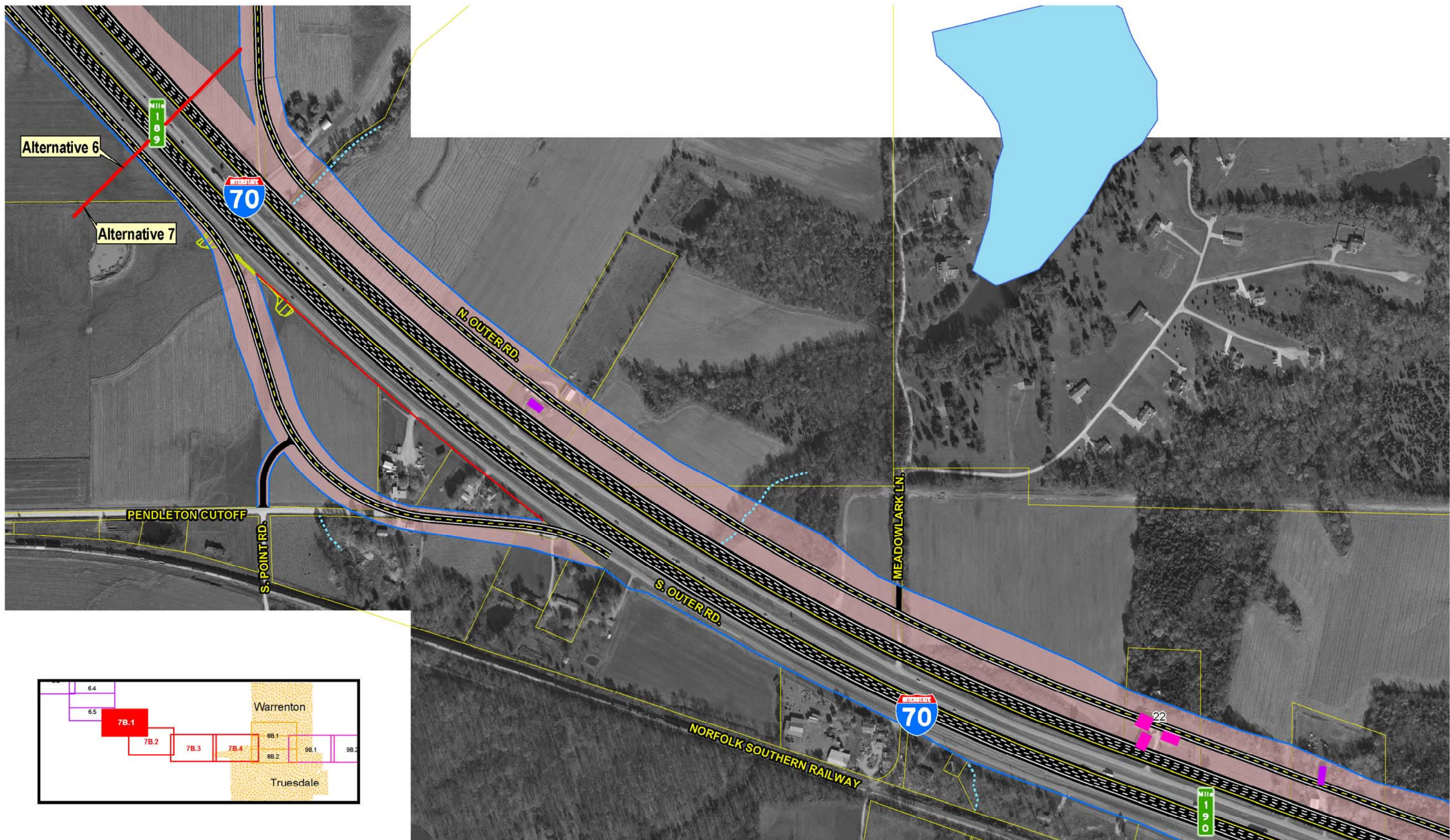
SIU
7
Route 19
to
Lake St. Louis

— Limited Access R/W	— City Limits	▲ Schools	— Lakes	— Existing Pavement to Remain	— Intermittent Streams
— Right-In, Right-Out R/W	— Cemeteries	▲ Hazardous Materials	— Jurisdictional Ponds	— NRHP Eligible Resource (w/MoDOT Resource Number)	— Perennial Streams
— Normal R/W	— Churches	— Parks	— Jurisdictional Wetlands	— Parcel Boundary	— Residential Displacements
— Proposed Bridge	— Hospitals	— Floodplains	— Non-Jurisdictional Wetlands		— Commercial Displacements
					— Land Acquisition

Widening Improvements to Existing Corridor- Alternative 7A (Preferred)

EXHIBIT 7A.2



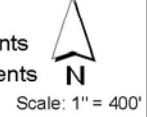


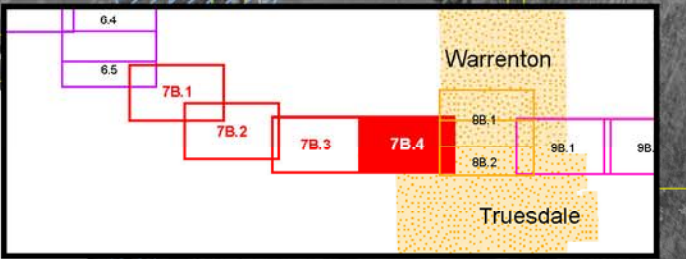
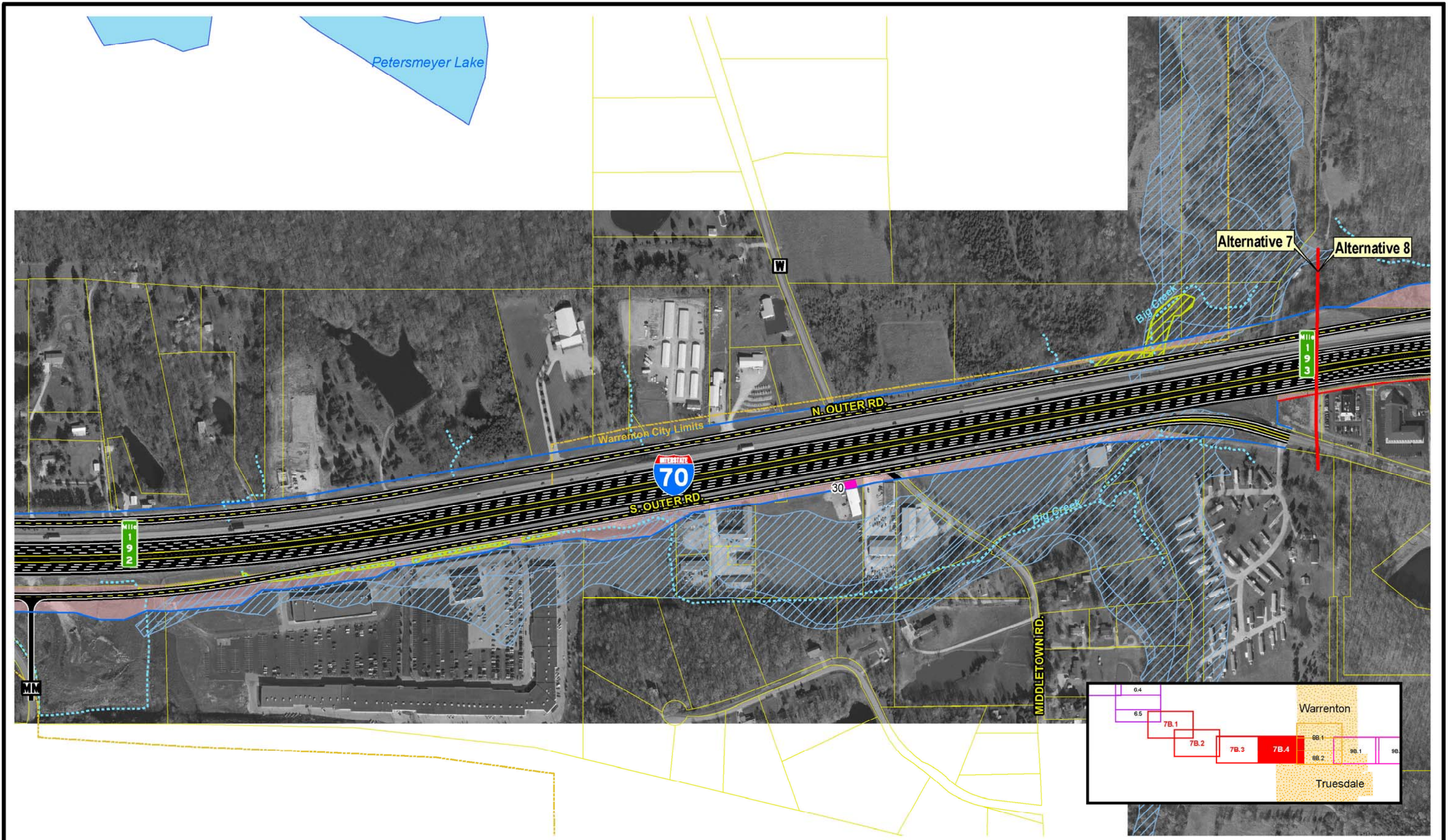
SIU
7
 Route 19
 to
 Lake St. Louis

- | | | | | | |
|---|--|---|--|--|---|
| <ul style="list-style-type: none"> — Limited Access R/W — Right-In, Right-Out R/W — Normal R/W ■ Proposed Bridge | <ul style="list-style-type: none"> City Limits Cemeteries Churches + Hospitals | <ul style="list-style-type: none"> ▲ Schools ▲ Hazardous Materials ■ Parks Floodplains | <ul style="list-style-type: none"> ■ Lakes ■ Jurisdictional Ponds Jurisdictional Wetlands Non-Jurisdictional Wetlands Parcel Boundary | <ul style="list-style-type: none"> ■ Existing Pavement to Remain NRHP Eligible Resource (w/MoDOT Resource Number) | <ul style="list-style-type: none"> — Intermittent Streams — Perennial Streams ■ Residential Displacements ■ Commercial Displacements ■ Land Acquisition |
|---|--|---|--|--|---|

Widening Improvements to Existing Corridor - Alternative 7B

EXHIBIT
7B.1





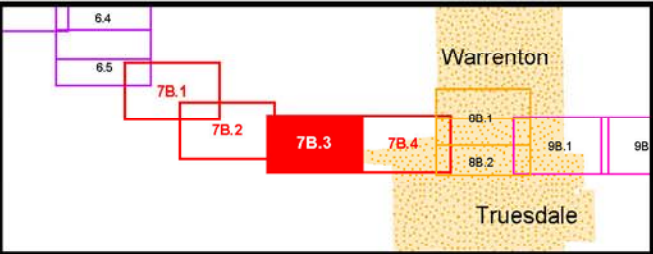
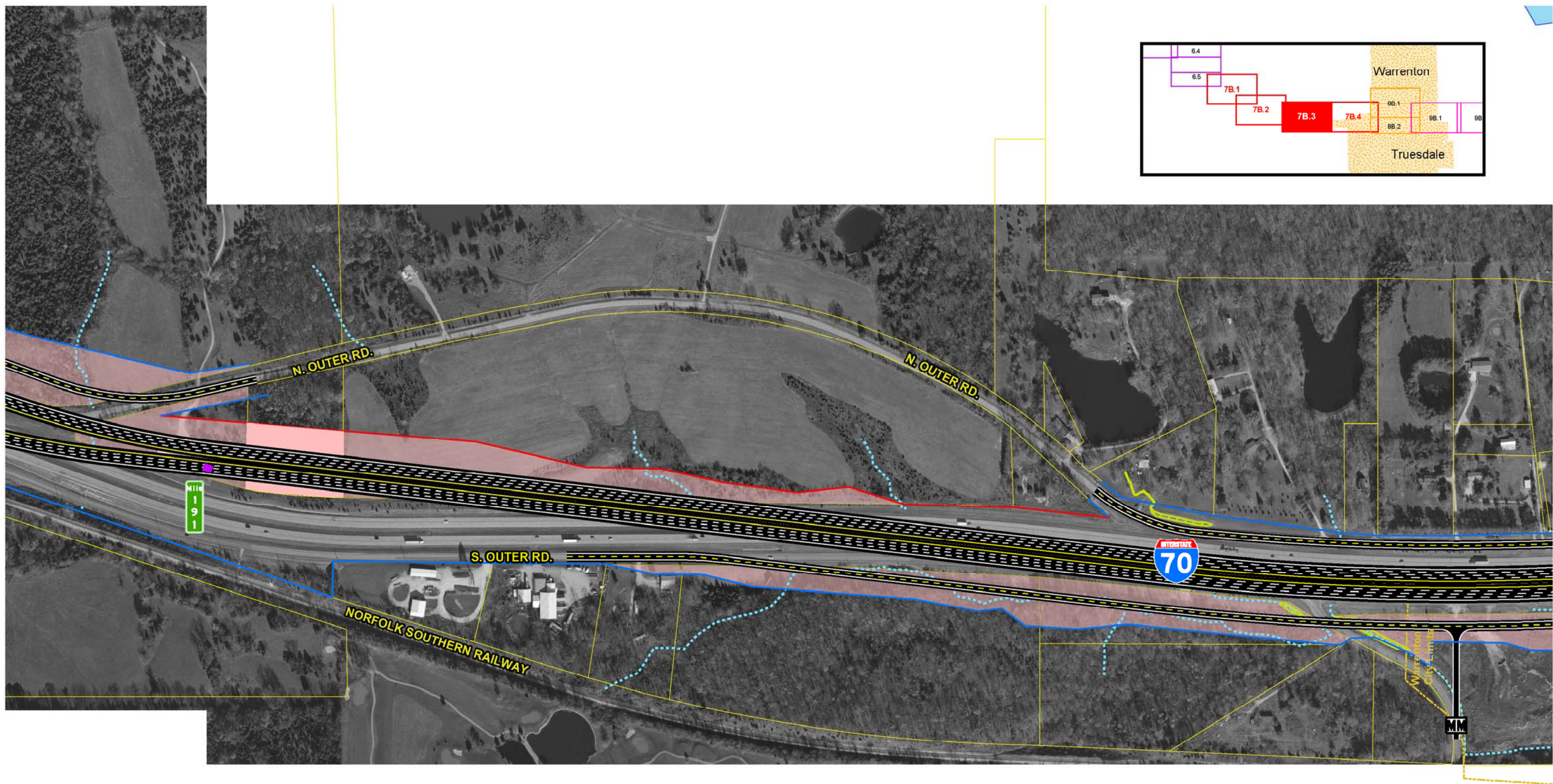
SIU
7
Route 19
to
Lake St. Louis

- | | | | | | |
|---------------------------|---------------|-----------------------|-------------------------------|--|----------------------------|
| — Limited Access R/W | — City Limits | ▲ Schools | — Lakes | — Existing Pavement to Remain | — Intermittent Streams |
| — Right-In, Right-Out R/W | — Cemeteries | ▲ Hazardous Materials | — Jurisdictional Ponds | — NRHP Eligible Resource (w/MoDOT Resource Number) | — Perennial Streams |
| — Normal R/W | — Churches | — Parks | — Jurisdictional Wetlands | — Residential Displacements | — Commercial Displacements |
| — Proposed Bridge | — Hospitals | — Floodplains | — Non-Jurisdictional Wetlands | — Land Acquisition | |
| | | | — Parcel Boundary | | |

Scale: 1" = 400'

Widening Improvements to Existing Corridor - Alternative 7B

EXHIBIT
7B.4

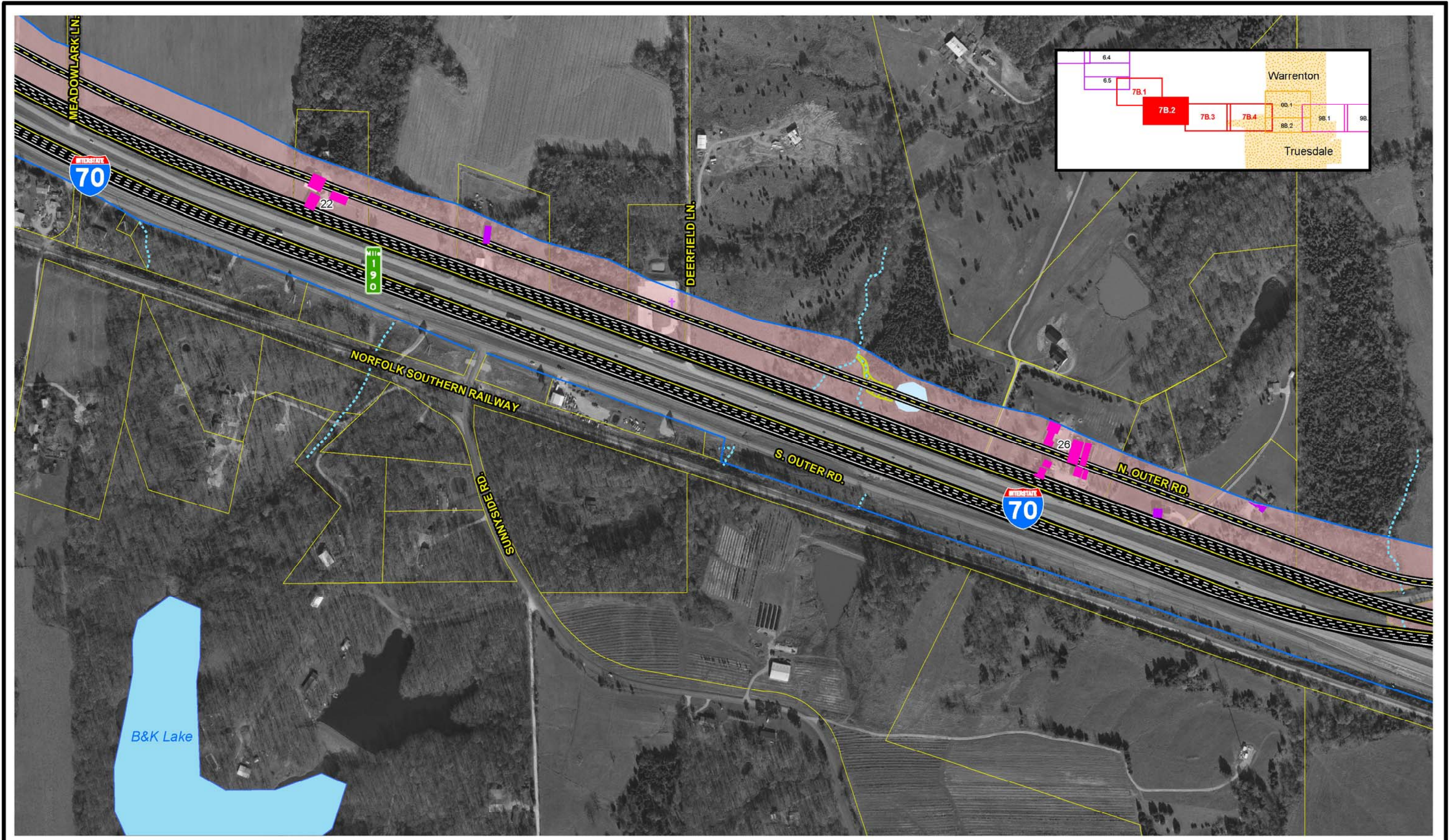


SIU
7
Route 19
to
Lake St. Louis

- | | | | | | |
|---------------------------|---------------|-----------------------|-------------------------------|--|-----------------------------|
| — Limited Access R/W | — City Limits | ▲ Schools | — Lakes | — Existing Pavement to Remain | — Intermittent Streams |
| — Right-In, Right-Out R/W | — Cemeteries | ▲ Hazardous Materials | — Jurisdictional Ponds | — NRHP Eligible Resource (w/MoDOT Resource Number) | — Perennial Streams |
| — Normal R/W | — Churches | — Parks | — Jurisdictional Wetlands | — Parcel Boundary | — Residential Displacements |
| — Proposed Bridge | — Hospitals | — Floodplains | — Non-Jurisdictional Wetlands | | — Commercial Displacements |
| | | | | | — Land Acquisition |

Widening Improvements to
Existing Corridor-
Alternative 7B

EXHIBIT
7B.3



SIU
7
Route 19
to
Lake St. Louis

- | | | | | | |
|---------------------------|---------------|-----------------------|-------------------------------|--|-----------------------------|
| — Limited Access R/W | — City Limits | ▲ Schools | — Lakes | — Existing Pavement to Remain | — Intermittent Streams |
| — Right-In, Right-Out R/W | — Cemeteries | ▲ Hazardous Materials | — Jurisdictional Ponds | — NRHP Eligible Resource (w/MoDOT Resource Number) | — Perennial Streams |
| — Normal R/W | — Churches | — Parks | — Jurisdictional Wetlands | — Parcel Boundary | — Residential Displacements |
| — Proposed Bridge | — Hospitals | — Floodplains | — Non-Jurisdictional Wetlands | | — Commercial Displacements |
| | | | | | — Land Acquisition |

Widening Improvements to
Existing Corridor-
Alternative 7B

EXHIBIT
7B.2