

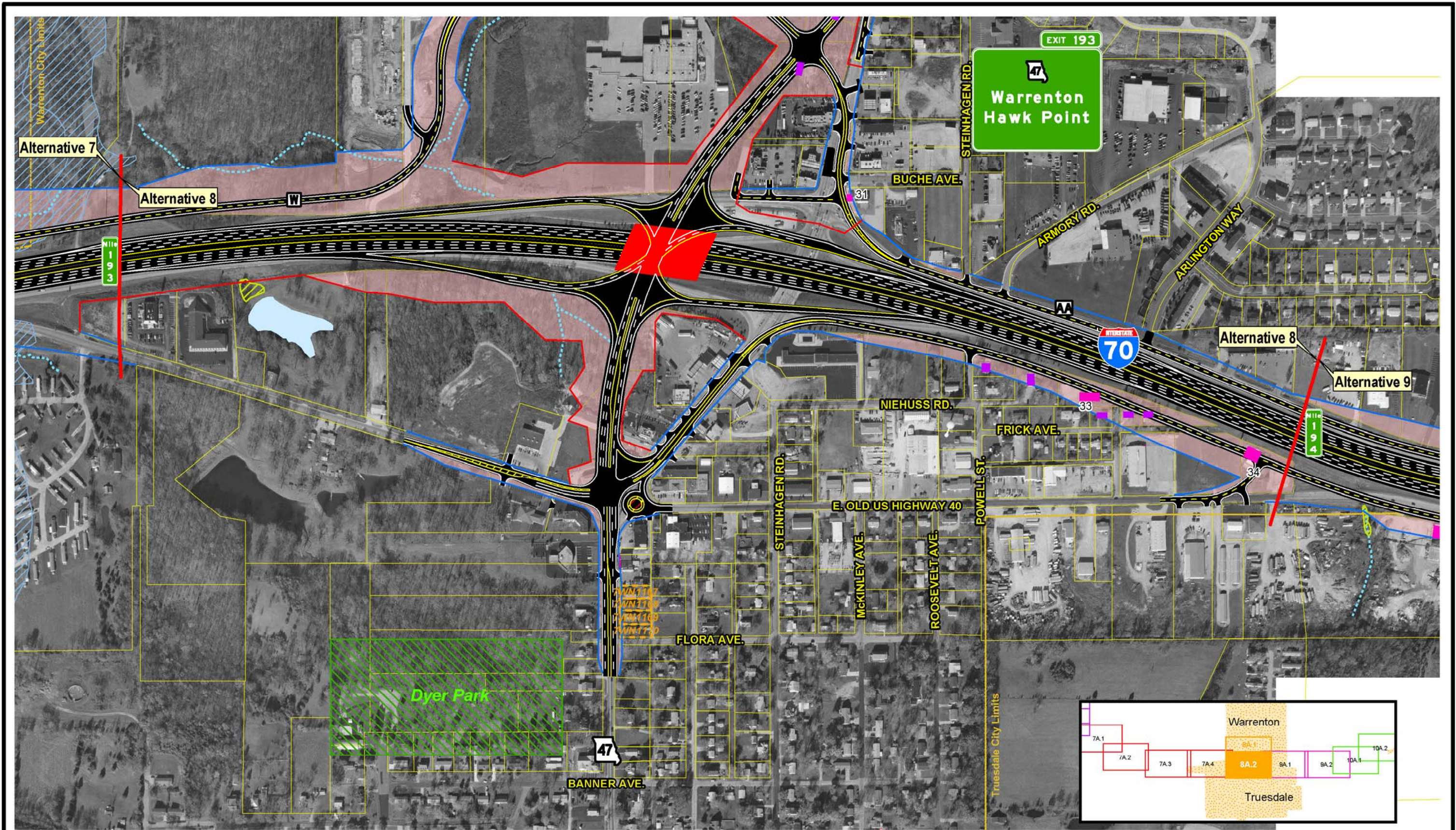
SIU  
7  
Route 19  
to  
Lake St. Louis

- |   |  |  |  |  |   |
|---|--|--|--|--|---|
| <ul style="list-style-type: none"> <li><span style="color: red;">—</span> Limited Access R/W</li> <li><span style="color: green;">—</span> Right-In, Right-Out R/W</li> <li><span style="color: blue;">—</span> Normal R/W</li> <li><span style="color: red;">■</span> Proposed Bridge</li> </ul> | <ul style="list-style-type: none"> <li><span style="border: 1px solid yellow;"> </span> City Limits</li> <li><span style="border: 1px solid purple;"> </span> Cemeteries</li> <li><span style="border: 1px solid purple;"> </span> Churches</li> <li><span style="border: 1px solid blue;"> </span> Hospitals</li> </ul> | <ul style="list-style-type: none"> <li><span style="color: red;">▲</span> Schools</li> <li><span style="color: brown;">▲</span> Hazardous Materials</li> <li><span style="color: green;">■</span> Parks</li> <li><span style="border: 1px solid blue;"> </span> Floodplains</li> </ul> | <ul style="list-style-type: none"> <li><span style="color: blue;">■</span> Lakes</li> <li><span style="color: lightblue;">■</span> Jurisdictional Ponds</li> <li><span style="border: 1px dashed yellow;"> </span> Jurisdictional Wetlands</li> <li><span style="border: 1px dashed pink;"> </span> Non-Jurisdictional Wetlands</li> </ul> | <ul style="list-style-type: none"> <li><span style="border: 1px solid gray;"> </span> Existing Pavement to Remain</li> <li><span style="border: 1px dashed orange;"> </span> NRHP Eligible Resource (w/MoDOT Resource Number)</li> <li><span style="border: 1px solid yellow;"> </span> Parcel Boundary</li> </ul> | <ul style="list-style-type: none"> <li><span style="border-bottom: 1px dashed blue;"> </span> Intermittent Streams</li> <li><span style="border-bottom: 1px solid blue;"> </span> Perennial Streams</li> <li><span style="border: 1px solid purple;"> </span> Residential Displacements</li> <li><span style="border: 1px solid pink;"> </span> Commercial Displacements</li> <li><span style="border: 1px solid red;"> </span> Land Acquisition</li> </ul> |
|---|--|--|--|--|---|

Widening Improvements to Existing Corridor- Alternative 8A

EXHIBIT 8A.1



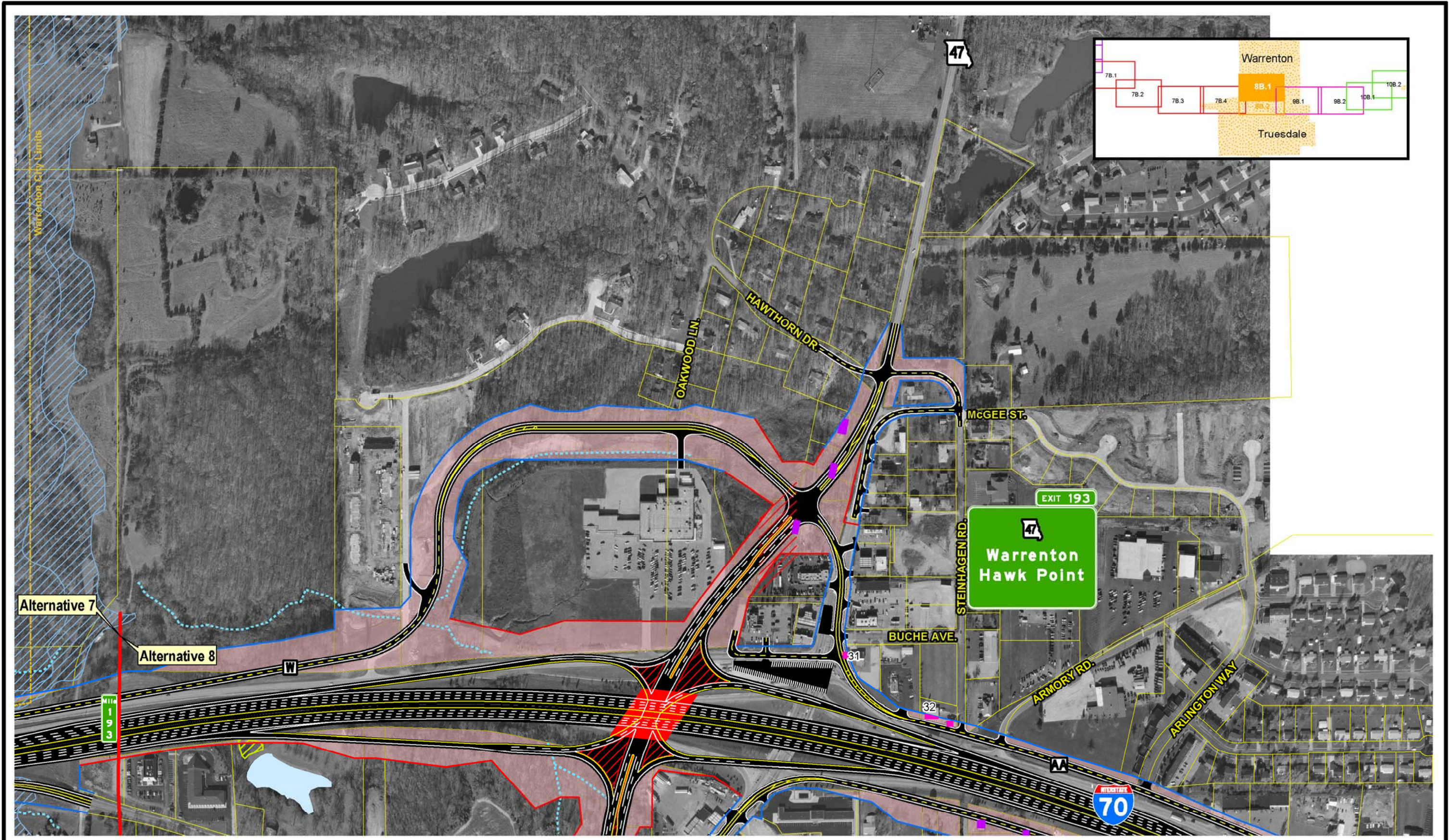


|                 |           |  |                             |                 |                           |                          |  |                             |
|-----------------|-----------|--|-----------------------------|-----------------|---------------------------|--------------------------|--|-----------------------------|
|                 |           | <b>SIU 7</b><br>Route 19 to Lake St. Louis | Limited Access R/W          | City Limits     | Schools                   | Lakes                    | Existing Pavement to Remain                      | Intermittent Streams        |
|                 |           |  | Right-In, Right-Out R/W     | Cemeteries      | Hazardous Materials       | Jurisdictional Ponds     | NRHP Eligible Resource (w/MoDOT Resource Number) | Perennial Streams           |
| Normal R/W      | Churches  | Parks                                      | Jurisdictional Wetlands     | Parcel Boundary | Residential Displacements | Commercial Displacements | Land Acquisition                                 | Non-Jurisdictional Wetlands |
| Proposed Bridge | Hospitals | Floodplains                                | Non-Jurisdictional Wetlands |                 |                           |                          |  |                             |

**Widening Improvements to Existing Corridor - Alternative 8A**

Scale: 1" = 400'

**EXHIBIT 8A.2**



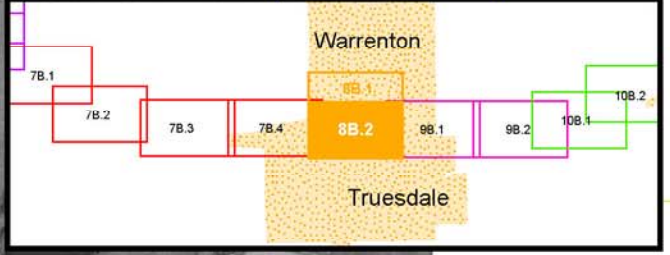
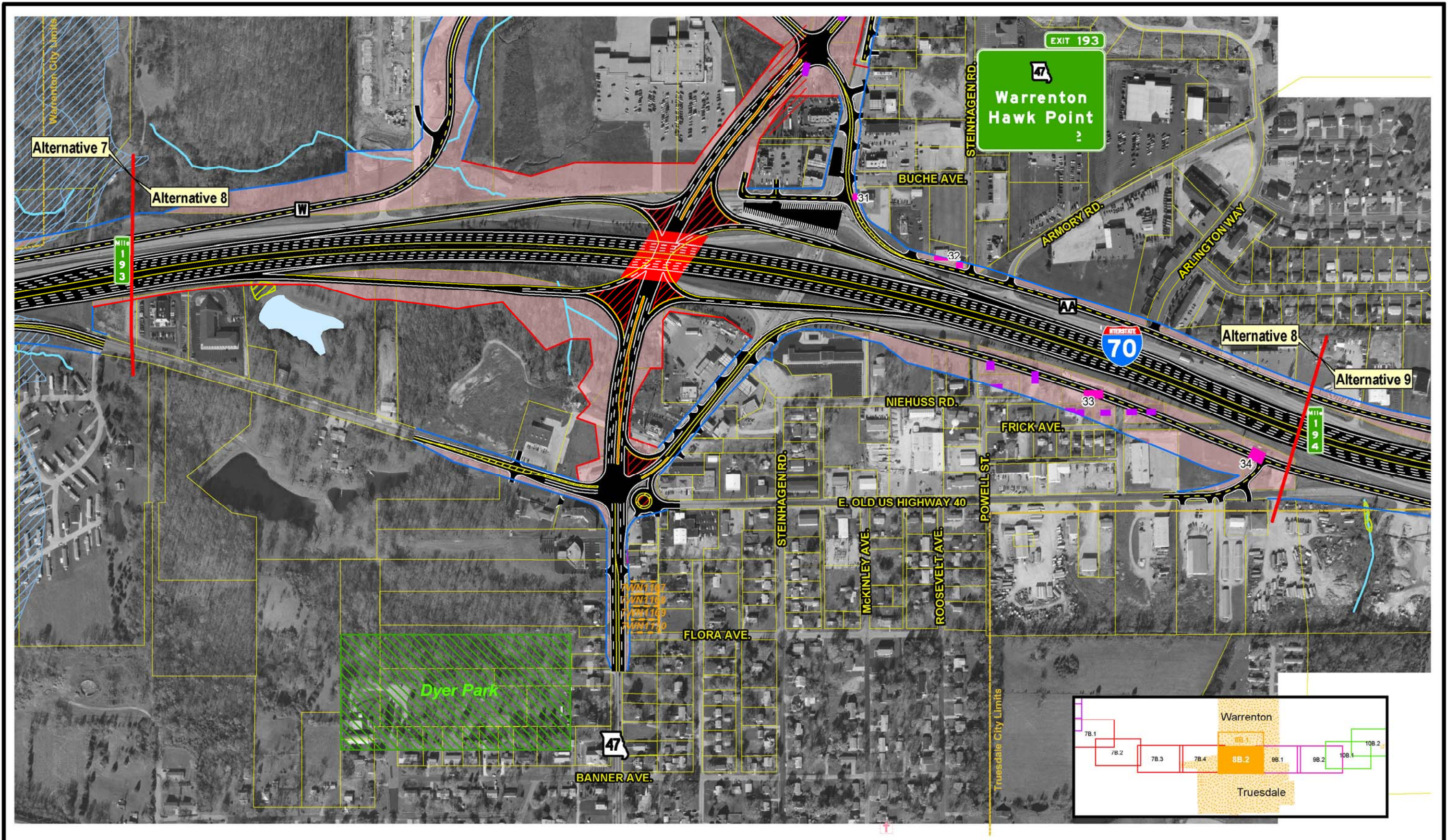
SIU  
**7**  
 Route 19  
 to  
 Lake St. Louis

- |                           |               |                       |                               |  |                             |
|---------------------------|---------------|-----------------------|-------------------------------|--|-----------------------------|
| — Limited Access R/W      | — City Limits | ▲ Schools             | — Lakes                       | — Existing Pavement to Remain                      | — Intermittent Streams      |
| — Right-In, Right-Out R/W | — Cemeteries  | ▲ Hazardous Materials | — Jurisdictional Ponds        | — NRHP Eligible Resource (w/MoDOT Resource Number) | — Perennial Streams         |
| — Normal R/W              | — Churches    | — Parks               | — Jurisdictional Wetlands     | — Parcel Boundary                                  | — Residential Displacements |
| — Proposed Bridge         | — Hospitals   | — Floodplains         | — Non-Jurisdictional Wetlands |  | — Commercial Displacements  |
|                           |               |                       |                               |  | — Land Acquisition          |

**Widening Improvements to Existing Corridor- Alternative 8B**

Scale: 1" = 400'

**EXHIBIT 8B.1**

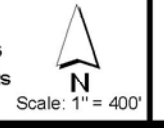


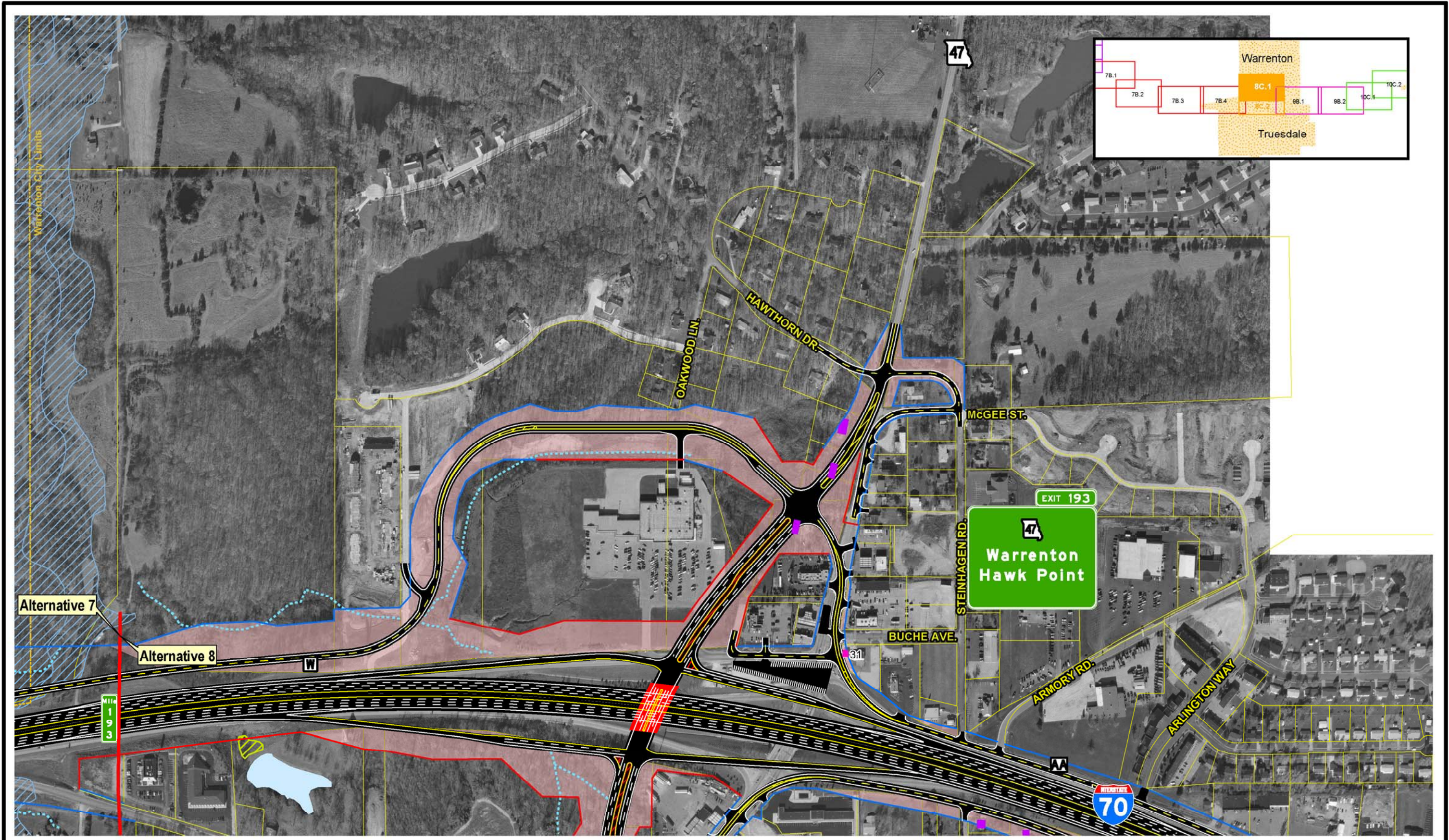
SIU  
**7**  
 Route 19  
 to  
 Lake St. Louis

- |  |   |   |   |   |   |
|--|---|---|---|---|---|
| <ul style="list-style-type: none"> <li><span style="color: red;">—</span> Limited Access RW</li> <li><span style="color: green;">—</span> Right-In, Right-Out RW</li> <li><span style="color: blue;">—</span> Normal RW</li> <li><span style="color: red;">—</span> Proposed Bridge</li> </ul> | <ul style="list-style-type: none"> <li><span style="border: 1px solid yellow; display: inline-block; width: 10px; height: 10px;"></span> City Limits</li> <li><span style="border: 1px solid red; display: inline-block; width: 10px; height: 10px;"></span> Cemeteries</li> <li><span style="border: 1px solid purple; display: inline-block; width: 10px; height: 10px;"></span> Churches</li> <li><span style="border: 1px solid blue; display: inline-block; width: 10px; height: 10px;"></span> Hospitals</li> </ul> | <ul style="list-style-type: none"> <li><span style="color: red;">▲</span> Schools</li> <li><span style="color: brown;">▲</span> Hazardous Materials</li> <li><span style="color: green;">■</span> Parks</li> <li><span style="color: blue;">■</span> Floodplains</li> </ul> | <ul style="list-style-type: none"> <li><span style="color: blue;">■</span> Lakes</li> <li><span style="color: lightblue;">■</span> Jurisdictional Ponds</li> <li><span style="color: yellow;">■</span> Jurisdictional Wetlands</li> <li><span style="color: magenta;">■</span> Non-Jurisdictional Wetlands</li> </ul> | <ul style="list-style-type: none"> <li><span style="border: 1px solid gray; display: inline-block; width: 10px; height: 10px;"></span> Existing Pavement to Remain</li> <li><span style="border: 1px dashed orange; display: inline-block; width: 10px; height: 10px;"></span> NRHP Eligible Site (w/MoDOT Resource Number)</li> <li><span style="border: 1px solid yellow; display: inline-block; width: 10px; height: 10px;"></span> Parcel Boundary</li> </ul> | <ul style="list-style-type: none"> <li><span style="color: lightblue;">—</span> Intermittent Streams</li> <li><span style="color: blue;">—</span> Perennial Streams</li> <li><span style="color: magenta;">—</span> Residential Displacements</li> <li><span style="color: red;">—</span> Commercial Displacements</li> <li><span style="color: pink;">—</span> Land Acquisition</li> </ul> |
|--|---|---|---|---|---|

**Widening Improvements to Existing Corridor - Alternative 8B**

**EXHIBIT 8B.2**



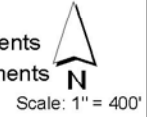


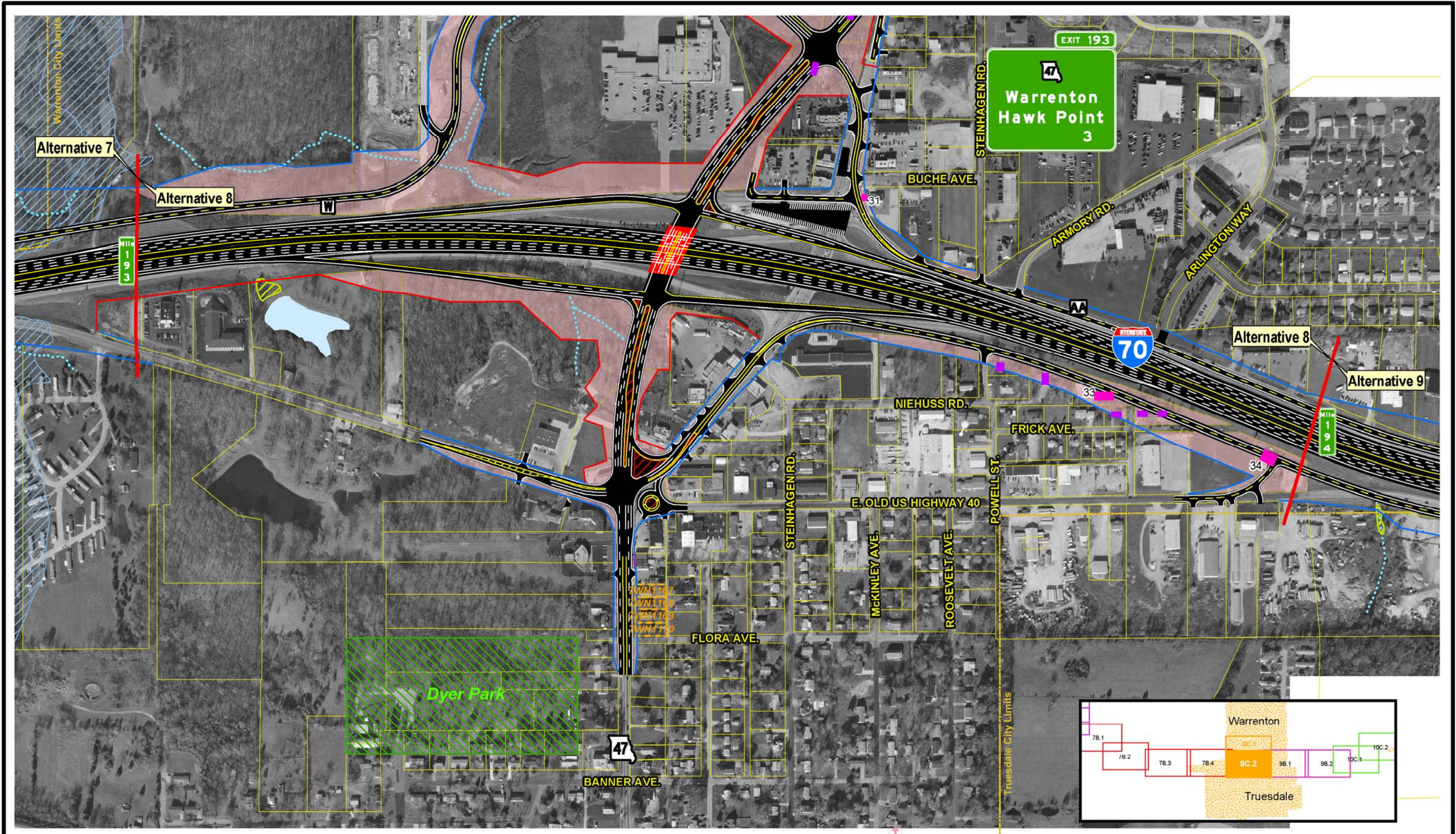
SIU  
**7**  
 Route 19  
 to  
 Lake St. Louis

- |                           |               |                       |                               |  |                             |
|---------------------------|---------------|-----------------------|-------------------------------|--|-----------------------------|
| — Limited Access R/W      | — City Limits | ▲ Schools             | — Lakes                       | — Existing Pavement to Remain                      | — Intermittent Streams      |
| — Right-In, Right-Out R/W | — Cemeteries  | ▲ Hazardous Materials | — Jurisdictional Ponds        | — NRHP Eligible Resource (w/MoDOT Resource Number) | — Perennial Streams         |
| — Normal R/W              | — Churches    | — Parks               | — Jurisdictional Wetlands     | — Parcel Boundary                                  | — Residential Displacements |
| — Proposed Bridge         | — Hospitals   | — Floodplains         | — Non-Jurisdictional Wetlands |  | — Commercial Displacements  |
|                           |               |                       |                               |  | — Land Acquisition          |

**Widening Improvements to Existing Corridor- Alternative 8C (Preferred)**

**EXHIBIT 8C.1**



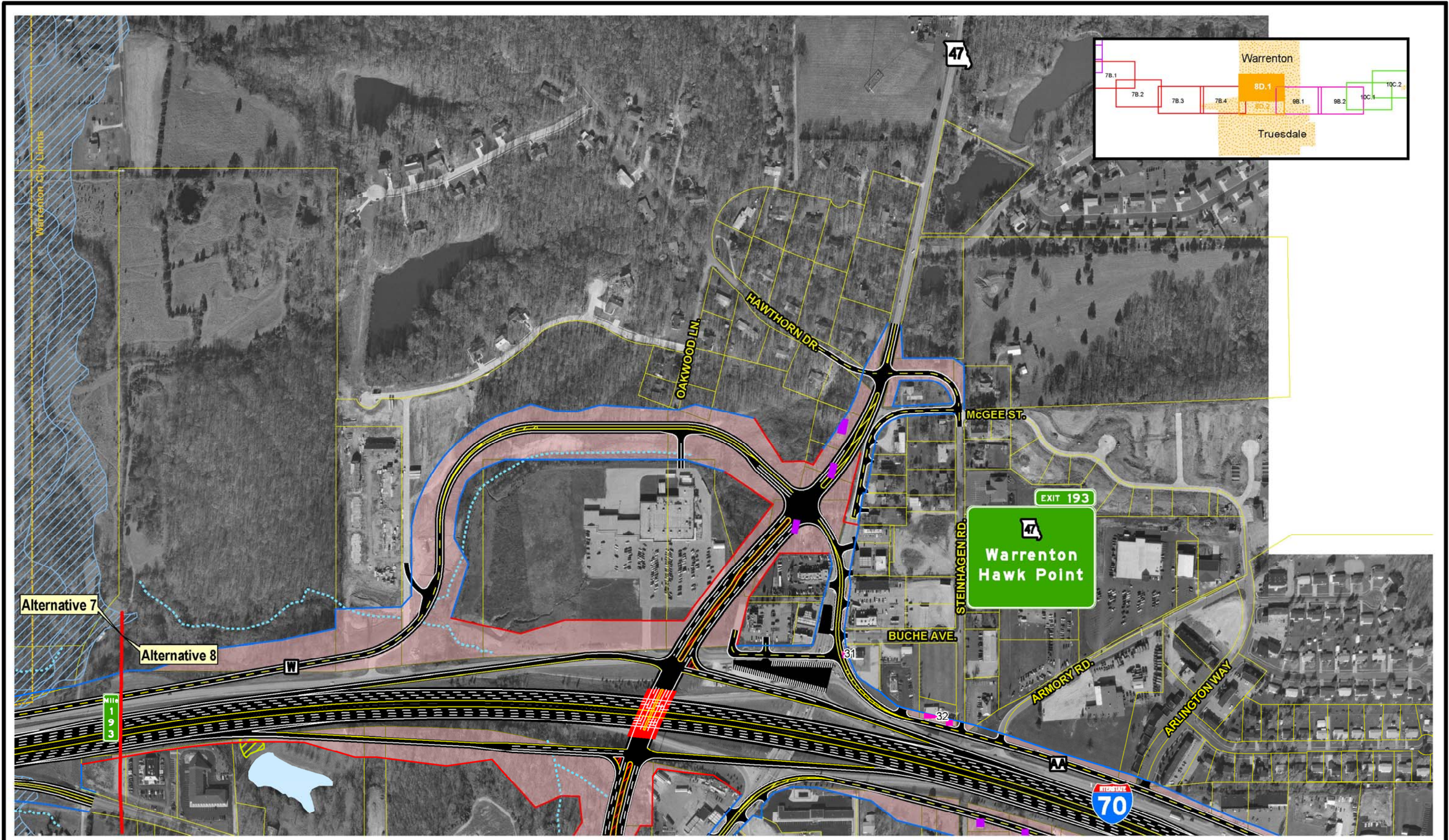


SIU  
**7**  
 Route 19  
 to  
 Lake St. Louis

- |                          |               |                       |                               |  |                             |
|--------------------------|---------------|-----------------------|-------------------------------|--|-----------------------------|
| — Limited Access RW      | — City Limits | ▲ Schools             | — Lakes                       | — Existing Pavement to Remain                      | — Intermittent Streams      |
| — Right-In, Right-Out RW | — Cemeteries  | ▲ Hazardous Materials | — Jurisdictional Ponds        | — NRHP Eligible Resource (w/MoDOT Resource Number) | — Perennial Streams         |
| — Normal RW              | — Churches    | — Parks               | — Jurisdictional Wetlands     | — Parcel Boundary                                  | — Residential Displacements |
| — Proposed Bridge        | — Hospitals   | — Floodplains         | — Non-Jurisdictional Wetlands |  | — Commercial Displacements  |
|                          |               |                       |                               |  | — Land Acquisition          |

**Widening Improvements to Existing Corridor- Alternative 8C (Preferred)**

EXHIBIT  
**8C.2**



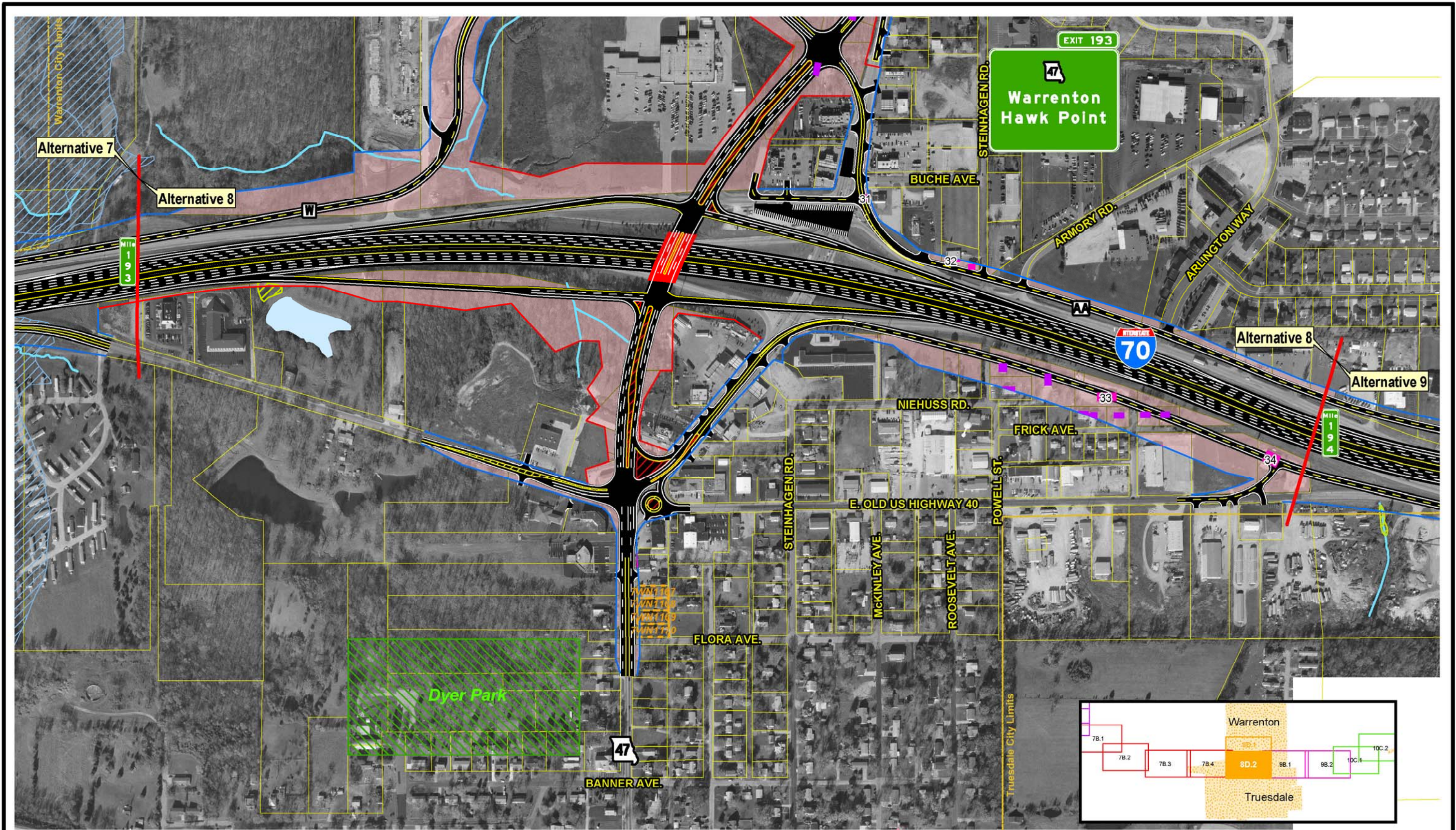
SIU  
**7**  
 Route 19  
 to  
 Lake St. Louis

- |  |  |   |   |   |  |
|--|--|---|---|---|--|
| <ul style="list-style-type: none"> <li><span style="color: red;">—</span> Limited Access RW</li> <li><span style="color: green;">—</span> Right-In, Right-Out RW</li> <li><span style="color: blue;">—</span> Normal RW</li> <li><span style="color: red;">—</span> Proposed Bridge</li> </ul> | <ul style="list-style-type: none"> <li><span style="border: 1px dashed yellow; display: inline-block; width: 10px; height: 10px;"></span> City Limits</li> <li><span style="border: 1px dashed purple; display: inline-block; width: 10px; height: 10px;"></span> Cemeteries</li> <li><span style="border: 1px dashed pink; display: inline-block; width: 10px; height: 10px;"></span> Churches</li> <li><span style="border: 1px dashed blue; display: inline-block; width: 10px; height: 10px;"></span> Hospitals</li> </ul> | <ul style="list-style-type: none"> <li><span style="color: red;">▲</span> Schools</li> <li><span style="color: brown;">▲</span> Hazardous Materials</li> <li><span style="color: green;">▲</span> Parks</li> <li><span style="color: blue;">▲</span> Floodplains</li> </ul> | <ul style="list-style-type: none"> <li><span style="color: lightblue;">■</span> Lakes</li> <li><span style="color: lightblue;">■</span> Jurisdictional Ponds</li> <li><span style="color: yellow;">■</span> Jurisdictional Wetlands</li> <li><span style="color: pink;">■</span> Non-Jurisdictional Wetlands</li> </ul> | <ul style="list-style-type: none"> <li><span style="color: gray;">■</span> Existing Pavement to Remain</li> <li><span style="color: orange;">■</span> NRHP Eligible Resource (w/MoDOT Resource Number)</li> <li><span style="border: 1px dashed yellow; display: inline-block; width: 10px; height: 10px;"></span> Parcel Boundary</li> </ul> | <ul style="list-style-type: none"> <li><span style="color: blue;">—</span> Intermittent Streams</li> <li><span style="color: lightblue;">—</span> Perennial Streams</li> <li><span style="color: purple;">■</span> Residential Displacements</li> <li><span style="color: pink;">■</span> Commercial Displacements</li> <li><span style="color: red;">■</span> Land Acquisition</li> </ul> |
|--|--|---|---|---|--|

**Widening Improvements to Existing Corridor- Alternative 8D**

Scale: 1" = 400'

**EXHIBIT 8D.1**



SIU  
**7**  
 Route 19  
 to  
 Lake St. Louis

- |  |  |  |   |  |  |
|--|--|--|---|--|--|
| <ul style="list-style-type: none"> <li>— Limited Access R/W</li> <li>— Right-In, Right-Out R/W</li> <li>— Normal R/W</li> <li>— Proposed Bridge</li> </ul> | <ul style="list-style-type: none"> <li>— City Limits</li> <li>— Cemeteries</li> <li>— Churches</li> <li>— Hospitals</li> </ul> | <ul style="list-style-type: none"> <li>— Schools</li> <li>— Hazardous Materials</li> <li>— Parks</li> <li>— Floodplains</li> </ul> | <ul style="list-style-type: none"> <li>— Lakes</li> <li>— Jurisdictional Ponds</li> <li>— Jurisdictional Wetlands</li> <li>— Non-Jurisdictional Wetlands</li> </ul> | <ul style="list-style-type: none"> <li>— Existing Pavement to Remain</li> <li>— NRHP Eligible Site (w/MoDOT Resource Number)</li> <li>— Parcel Boundary</li> </ul> | <ul style="list-style-type: none"> <li>— Intermittent Streams</li> <li>— Perennial Streams</li> <li>— Residential Displacements</li> <li>— Commercial Displacements</li> <li>— Land Acquisition</li> </ul> |
|--|--|--|---|--|--|

**Widening Improvements to Existing Corridor - Alternative 8D**

**EXHIBIT 8D.2**

