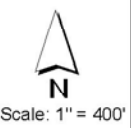


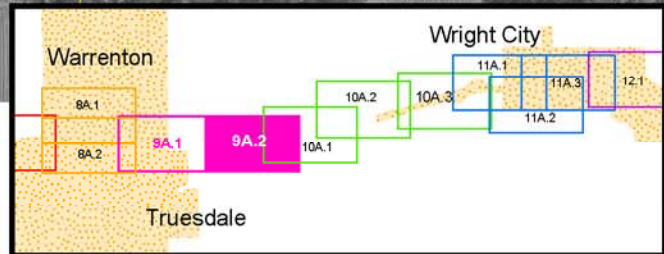
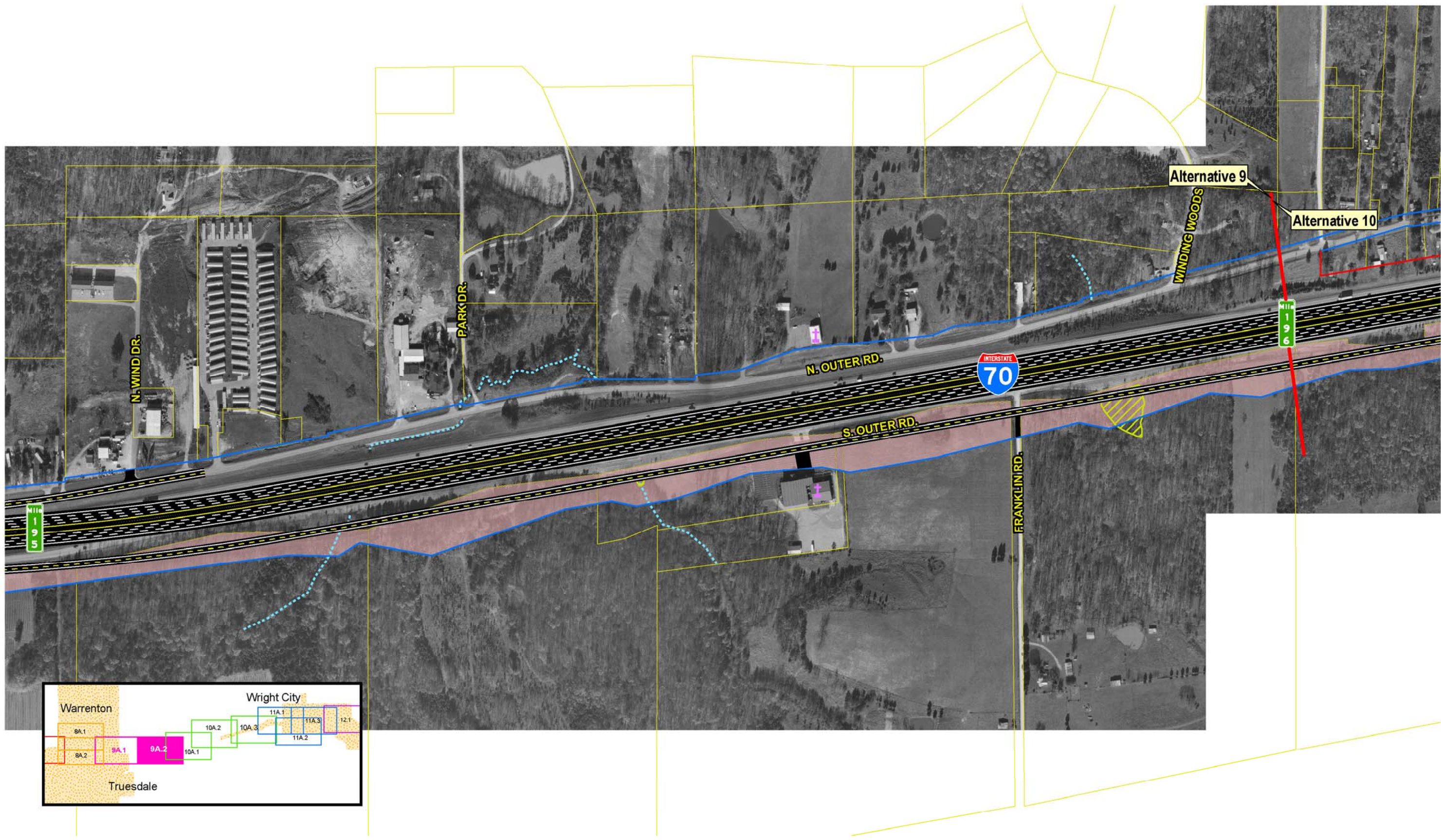
SIU
7
 Route 19
 to
 Lake St. Louis

- | | | | | | |
|---------------------------|---------------|-----------------------|-------------------------------|--|-----------------------------|
| — Limited Access R/W | — City Limits | ▲ Schools | — Lakes | — Existing Pavement to Remain | — Intermittent Streams |
| — Right-In, Right-Out R/W | — Cemeteries | ▲ Hazardous Materials | — Jurisdictional Ponds | — NRHP Eligible Resource (w/MoDOT Resource Number) | — Perennial Streams |
| — Normal R/W | — Churches | ▲ Parks | — Jurisdictional Wetlands | — Parcel Boundary | — Residential Displacements |
| — Proposed Bridge | — Hospitals | ▲ Floodplains | — Non-Jurisdictional Wetlands | | — Commercial Displacements |
| | | | | | — Land Acquisition |



Widening Improvements to Existing Corridor- Alternative 9A (Preferred)

EXHIBIT 9A.1



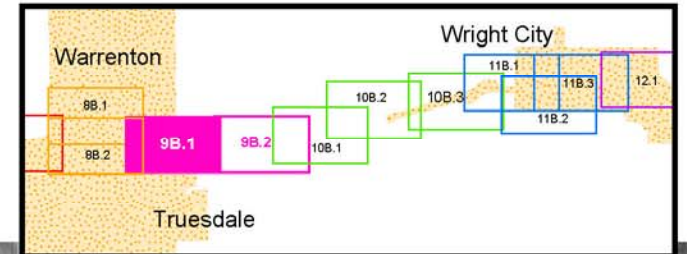
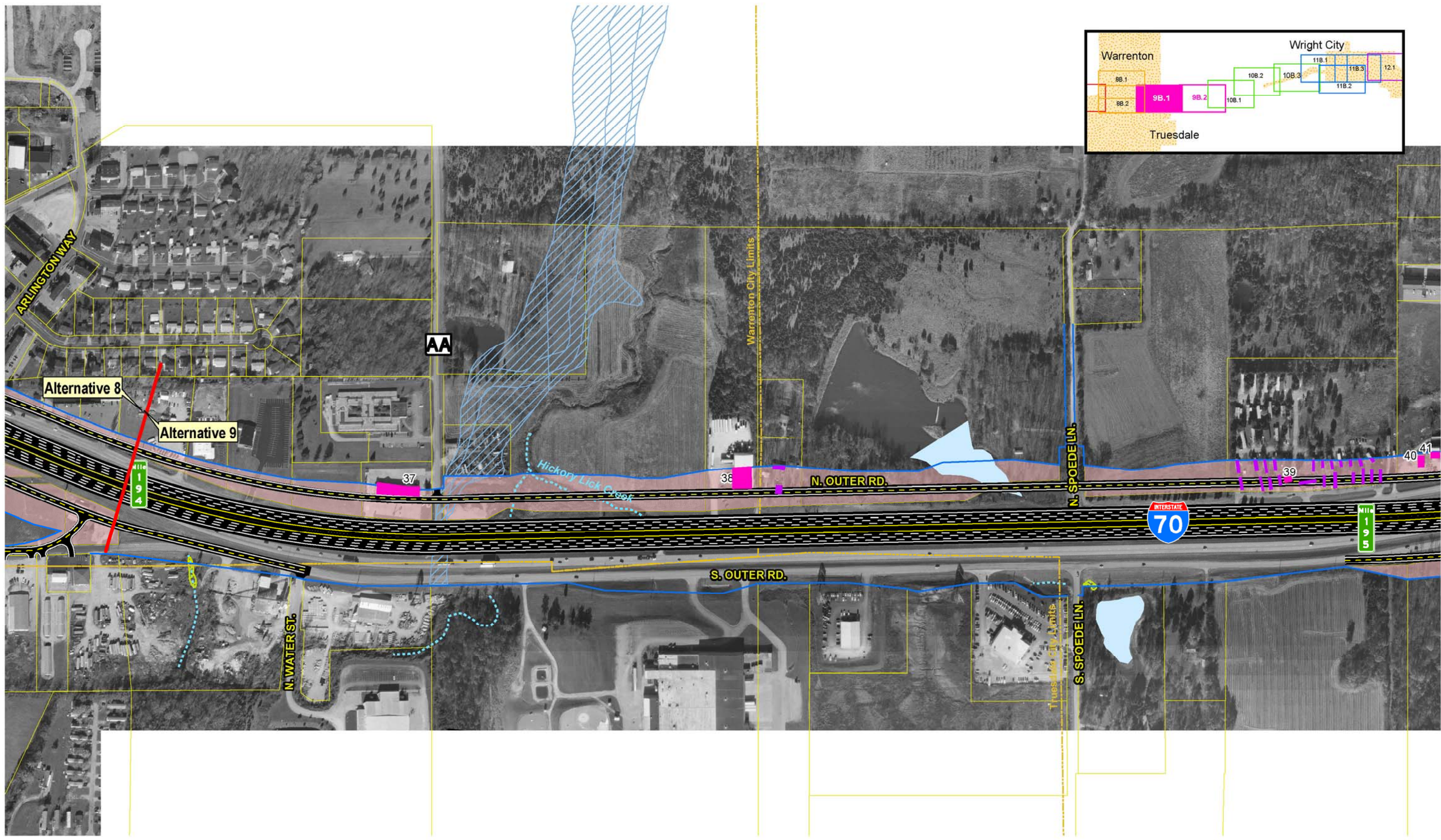
SIU
7
 Route 19
 to
 Lake St. Louis

- | | | | | | |
|---|--|--|---|--|--|
| <ul style="list-style-type: none"> — Limited Access RW — Right-In, Right-Out RW — Normal RW — Proposed Bridge | <ul style="list-style-type: none"> — City Limits — Cemeteries — Churches — Hospitals | <ul style="list-style-type: none"> — Schools — Hazardous Materials — Parks — Floodplains | <ul style="list-style-type: none"> — Lakes — Jurisdictional Ponds — Jurisdictional Wetlands — Non-Jurisdictional Wetlands | <ul style="list-style-type: none"> — Existing Pavement to Remain — NRHP Eligible Resource (w/MoDOT Resource Number) — Parcel Boundary | <ul style="list-style-type: none"> — Intermittent Streams — Perennial Streams — Residential Displacements — Commercial Displacements — Land Acquisition |
|---|--|--|---|--|--|



Widening Improvements to Existing Corridor- Alternative 9A (Preferred)

EXHIBIT
9A.2



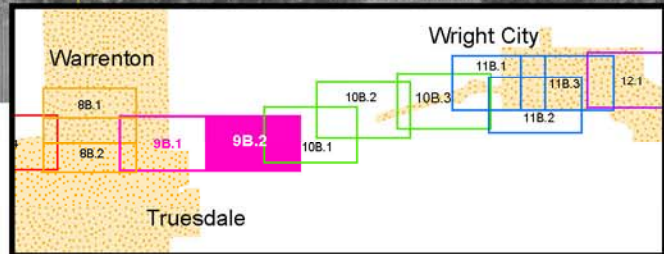
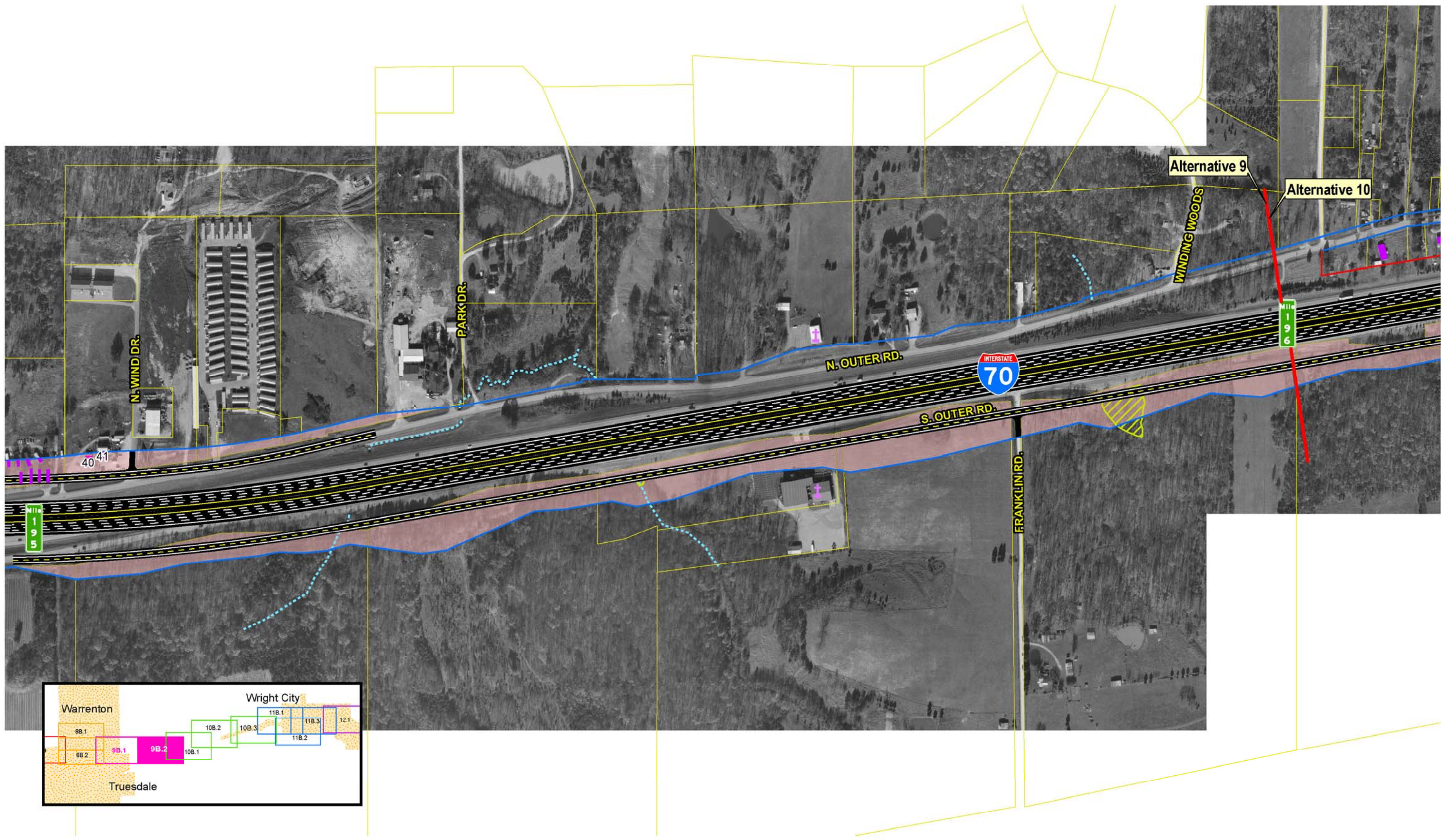
SIU
7
 Route 19
 to
 Lake St. Louis

- | | | | | | |
|--|--|--|---|--|--|
| <ul style="list-style-type: none"> — Limited Access R/W — Right-In, Right-Out R/W — Normal R/W — Proposed Bridge | <ul style="list-style-type: none"> — City Limits — Cemeteries — Churches — Hospitals | <ul style="list-style-type: none"> ▲ Schools ▲ Hazardous Materials ▲ Parks ▲ Floodplains | <ul style="list-style-type: none"> — Lakes — Jurisdictional Ponds — Jurisdictional Wetlands — Non-Jurisdictional Wetlands | <ul style="list-style-type: none"> — Existing Pavement to Remain — NRHP Eligible Resource (w/MoDOT Resource Number) — Parcel Boundary | <ul style="list-style-type: none"> — Intermittent Streams — Perennial Streams — Residential Displacements — Commercial Displacements — Land Acquisition |
|--|--|--|---|--|--|

Widening Improvements to Existing Corridor- Alternative 9B.1

Scale: 1" = 400'

EXHIBIT
9B.1



SIU
7
 Route 19
 to
 Lake St. Louis

- | | | | | | |
|---|--|---|---|---|--|
| <ul style="list-style-type: none"> — Limited Access R/W — Right-In, Right-Out R/W — Normal R/W — Proposed Bridge | <ul style="list-style-type: none"> City Limits Cemeteries Churches Hospitals | <ul style="list-style-type: none"> ▲ Schools ▲ Hazardous Materials — Railroads Floodplains | <ul style="list-style-type: none"> Lakes Jurisdictional Ponds Jurisdictional Wetlands Non-Jurisdictional Wetlands | <ul style="list-style-type: none"> Parks Existing Pavement to Remain NRHP Eligible Resource (w/MoDOT Resource Number) Parcel Boundary | <ul style="list-style-type: none"> --- Intermittent Streams --- Perennial Streams Residential Displacements Commercial Displacements Land Acquisition |
|---|--|---|---|---|--|

Widening Improvements to Existing Corridor- Alternative 9B

EXHIBIT
9B.2

