

SIU
7
 Route 19
 to
 Lake St. Louis

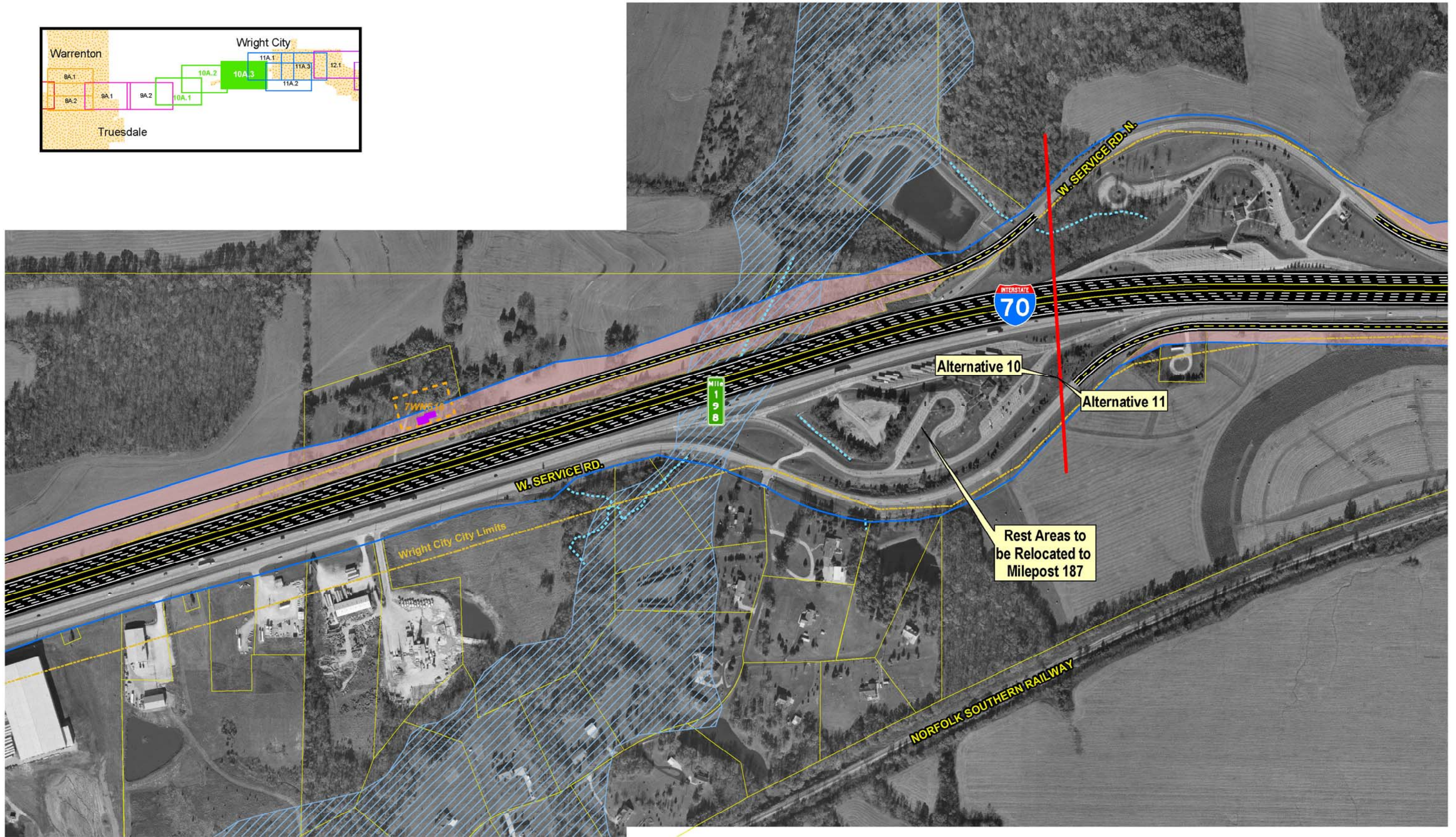
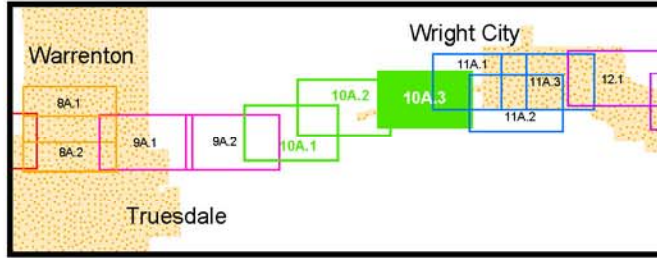
- | | | | | | |
|---------------------------|---------------|-----------------------|-------------------------------|--|-----------------------------|
| — Limited Access R/W | — City Limits | ▲ Schools | — Lakes | — Existing Pavement to Remain | — Intermittent Streams |
| — Right-In, Right-Out R/W | — Cemeteries | ▲ Hazardous Materials | — Jurisdictional Ponds | — NRHP Eligible Resource (w/MoDOT Resource Number) | — Perennial Streams |
| — Normal R/W | — Churches | — Parks | — Jurisdictional Wetlands | — Parcel Boundary | — Residential Displacements |
| — Proposed Bridge | — Hospitals | — Floodplains | — Non-Jurisdictional Wetlands | | — Commercial Displacements |
| | | | | | — Land Acquisition |

Warrenton
 Wright City
 Truesdale

Scale: 1" = 400'

Widening Improvements to
 Existing Corridor-
 Alternative 10A

EXHIBIT
10A.1



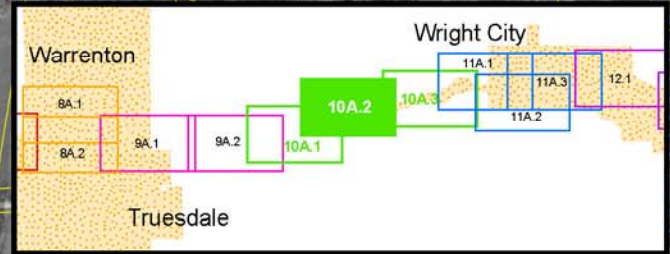
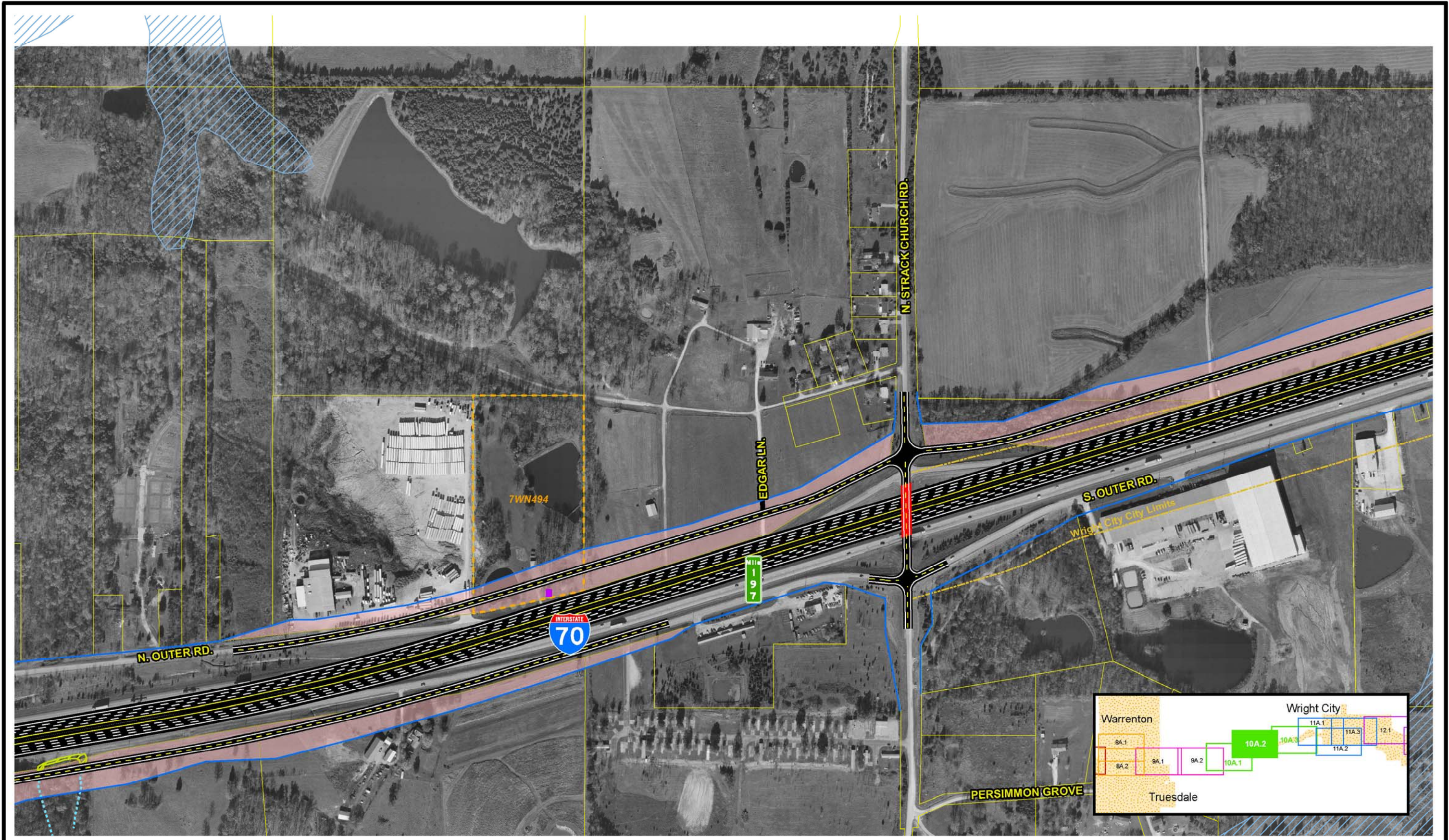
SIU
7
Route 19
to
Lake St. Louis

- | | | | | | |
|--|--|--|---|--|--|
| <ul style="list-style-type: none"> — Limited Access R/W — Right-In, Right-Out R/W — Normal R/W — Proposed Bridge | <ul style="list-style-type: none"> — City Limits — Cemeteries — Churches — Hospitals | <ul style="list-style-type: none"> ▲ Schools ▲ Hazardous Materials ▲ Parks ▲ Floodplains | <ul style="list-style-type: none"> — Lakes — Jurisdictional Ponds — Jurisdictional Wetlands — Non-Jurisdictional Wetlands | <ul style="list-style-type: none"> — Existing Pavement to Remain — NRHP Eligible Resource (w/MoDOT Resource Number) — Parcel Boundary | <ul style="list-style-type: none"> — Intermittent Streams — Perennial Streams — Residential Displacements — Commercial Displacements — Land Acquisition |
|--|--|--|---|--|--|



Widening Improvements to Existing Corridor- Alternative 10A

EXHIBIT
10A.3



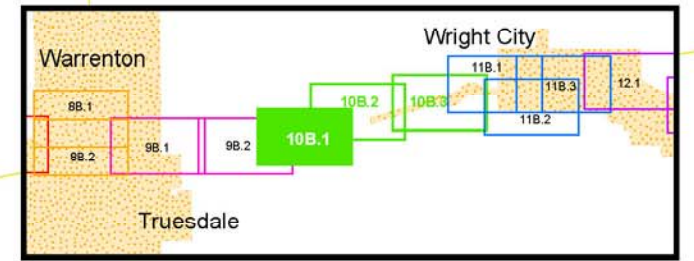
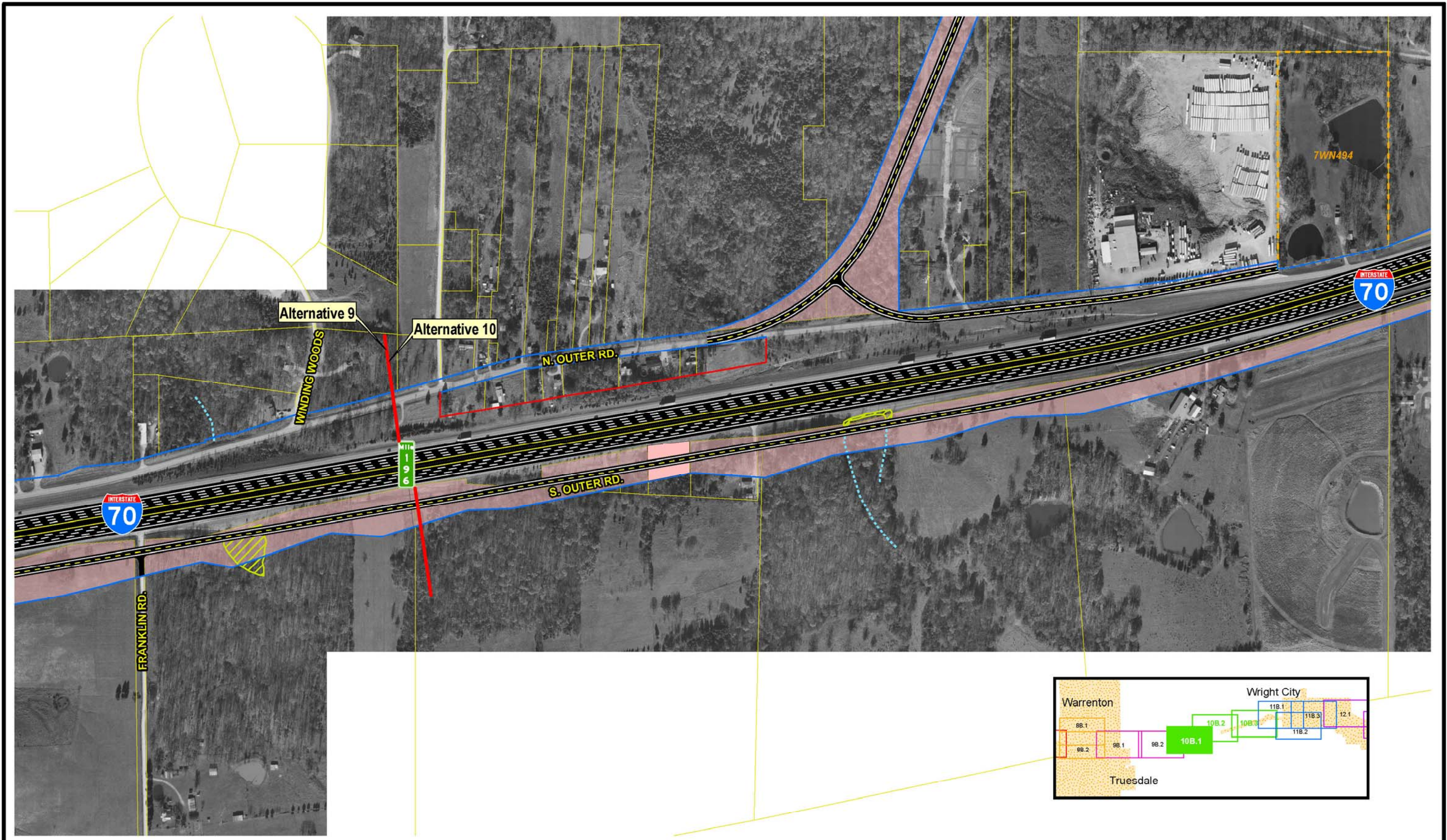
SIU
7
 Route 19
 to
 Lake St. Louis

- | | | | | | |
|---------------------------|---------------|-----------------------|-------------------------------|--|-----------------------------|
| — Limited Access R/W | — City Limits | ▲ Schools | — Lakes | — Existing Pavement to Remain | — Intermittent Streams |
| — Right-In, Right-Out R/W | — Cemeteries | ▲ Hazardous Materials | — Jurisdictional Ponds | — NRHP Eligible Resource (w/MoDOT Resource Number) | — Perennial Streams |
| — Normal R/W | — Churches | ▲ Parks | — Jurisdictional Wetlands | — Parcel Boundary | — Residential Displacements |
| — Proposed Bridge | — Hospitals | — Floodplains | — Non-Jurisdictional Wetlands | | — Commercial Displacements |
| | | | | | — Land Acquisition |

Widening Improvements to Existing Corridor- Alternative 10A

Scale: 1" = 400'

EXHIBIT
10A.2

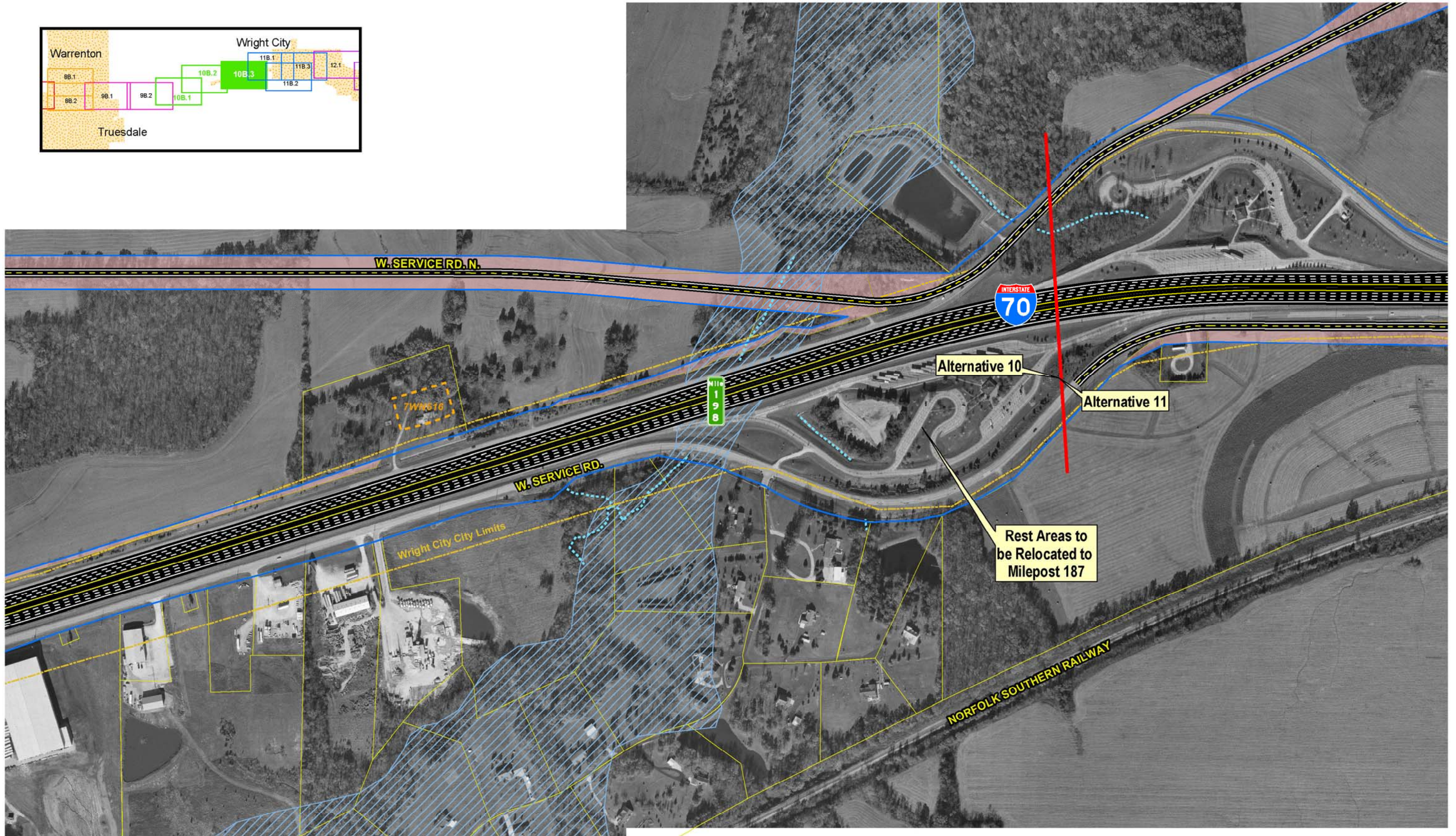
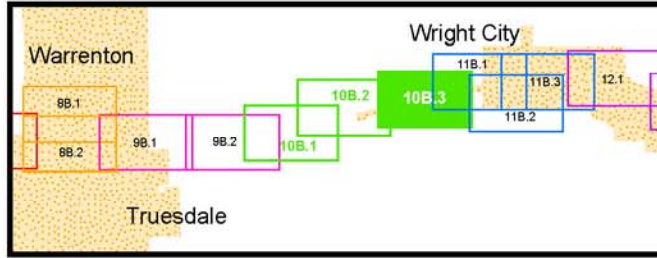


SIU
7
 Route 19
 to
 Lake St. Louis

- | | | | | | |
|--|--|---|---|---|---|
| <ul style="list-style-type: none"> — Limited Access RW — Right-In, Right-Out RW — Normal RW — Proposed Bridge | <ul style="list-style-type: none"> City Limits Cemeteries Churches Hospitals | <ul style="list-style-type: none"> ▲ Schools ▲ Hazardous Materials ■ Parks ■ Floodplains | <ul style="list-style-type: none"> ■ Lakes ■ Jurisdictional Ponds ■ Jurisdictional Wetlands ■ Non-Jurisdictional Wetlands | <ul style="list-style-type: none"> Existing Pavement to Remain NRHP Eligible Resource (w/MoDOT Resource Number) Parcel Boundary | <ul style="list-style-type: none"> ⋯ Intermittent Streams — Perennial Streams ■ Residential Displacements ■ Commercial Displacements ■ Land Acquisition |
|--|--|---|---|---|---|

Widening Improvements to Existing Corridor- Alternative 10B

EXHIBIT
10B.1

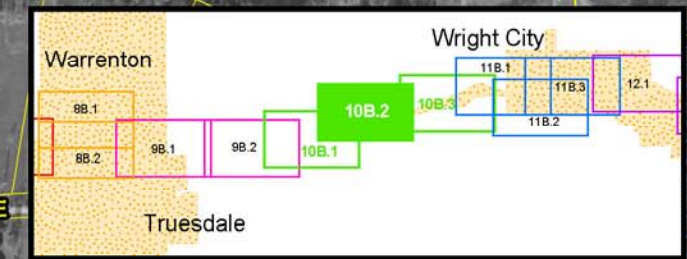


SIU
7
Route 19
to
Lake St. Louis

- | | | | | | |
|---------------------------|---------------|-----------------------|-------------------------------|--|----------------------------|
| — Limited Access R/W | — City Limits | ▲ Schools | — Lakes | — Existing Pavement to Remain | — Intermittent Streams |
| — Right-In, Right-Out R/W | — Cemeteries | ▲ Hazardous Materials | — Jurisdictional Ponds | — NRHP Eligible Resource (w/MoDOT Resource Number) | — Perennial Streams |
| — Normal R/W | — Churches | — Parks | — Jurisdictional Wetlands | — Residential Displacements | — Commercial Displacements |
| — Proposed Bridge | — Hospitals | — Floodplains | — Non-Jurisdictional Wetlands | — Parcels Boundary | — Land Acquisition |

Widening Improvements to Existing Corridor- Alternative 10B

EXHIBIT
10B.3



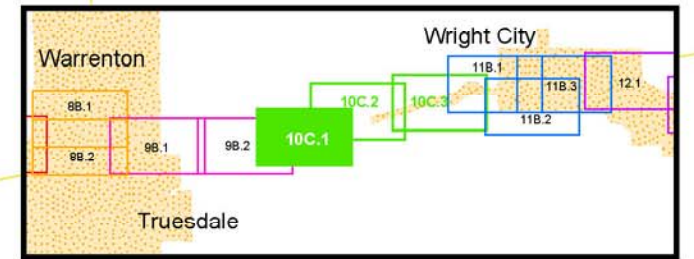
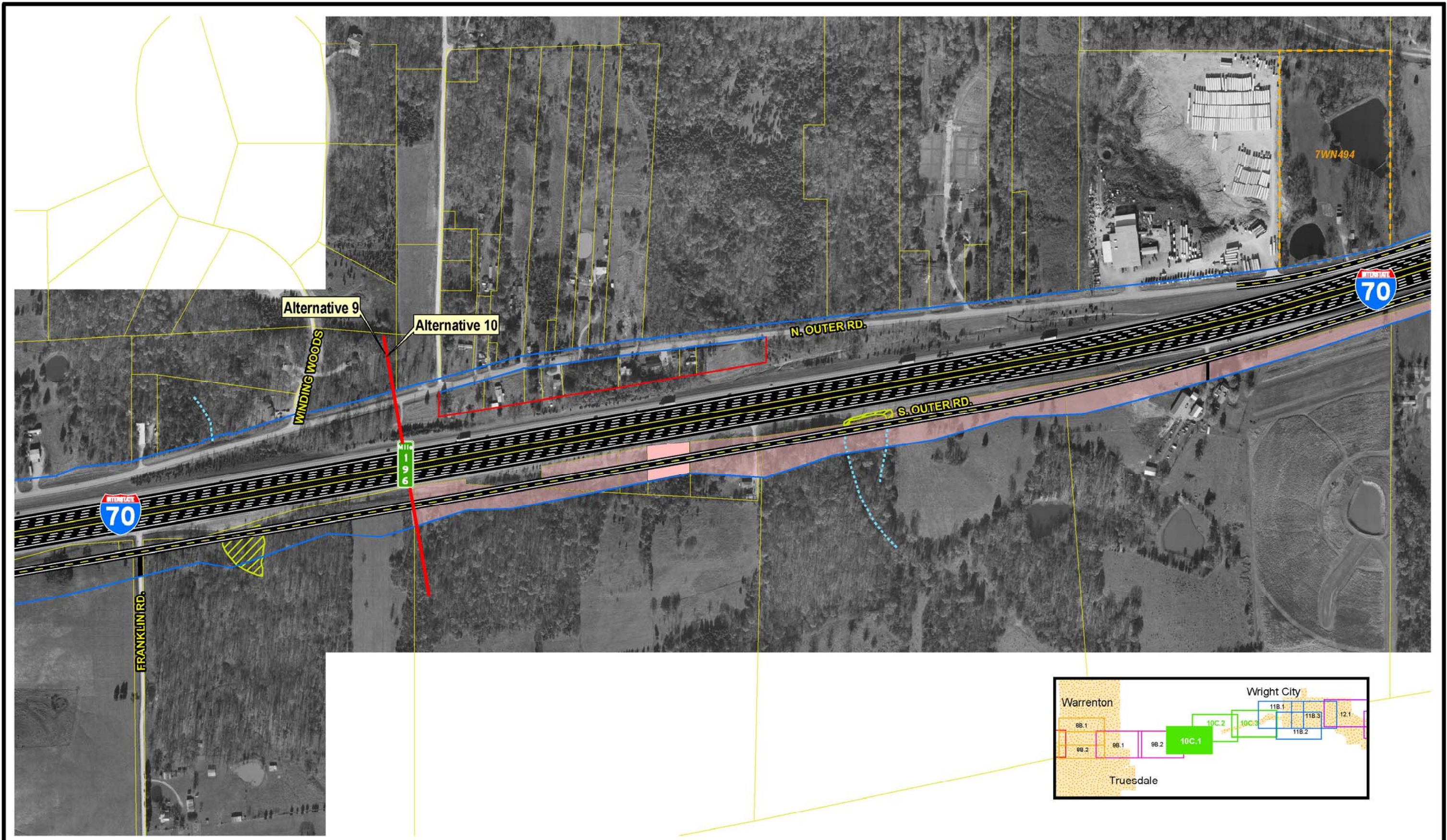
SIU
7
Route 19
to
Lake St. Louis

- | | | | | | |
|--|--|---|--|---|--|
| <ul style="list-style-type: none"> — Limited Access RW — Right-In, Right-Out RW — Normal RW — Proposed Bridge | <ul style="list-style-type: none"> City Limits + Cemeteries + Churches + Hospitals | <ul style="list-style-type: none"> ▲ Schools ▲ Hazardous Materials ■ Parks ▨ Floodplains | <ul style="list-style-type: none"> ■ Lakes ■ Jurisdictional Ponds ■ Jurisdictional Wetlands ■ Non-Jurisdictional Wetlands Parcel Boundary | <ul style="list-style-type: none"> Existing Pavement to Remain NRHP Eligible Resource (w/MoDOT Resource Number) Land Acquisition | <ul style="list-style-type: none"> ⋯ Intermittent Streams — Perennial Streams ■ Residential Displacements ■ Commercial Displacements |
|--|--|---|--|---|--|

Widening Improvements to Existing Corridor- Alternative 10B

EXHIBIT
10B.2

Scale: 1" = 400'



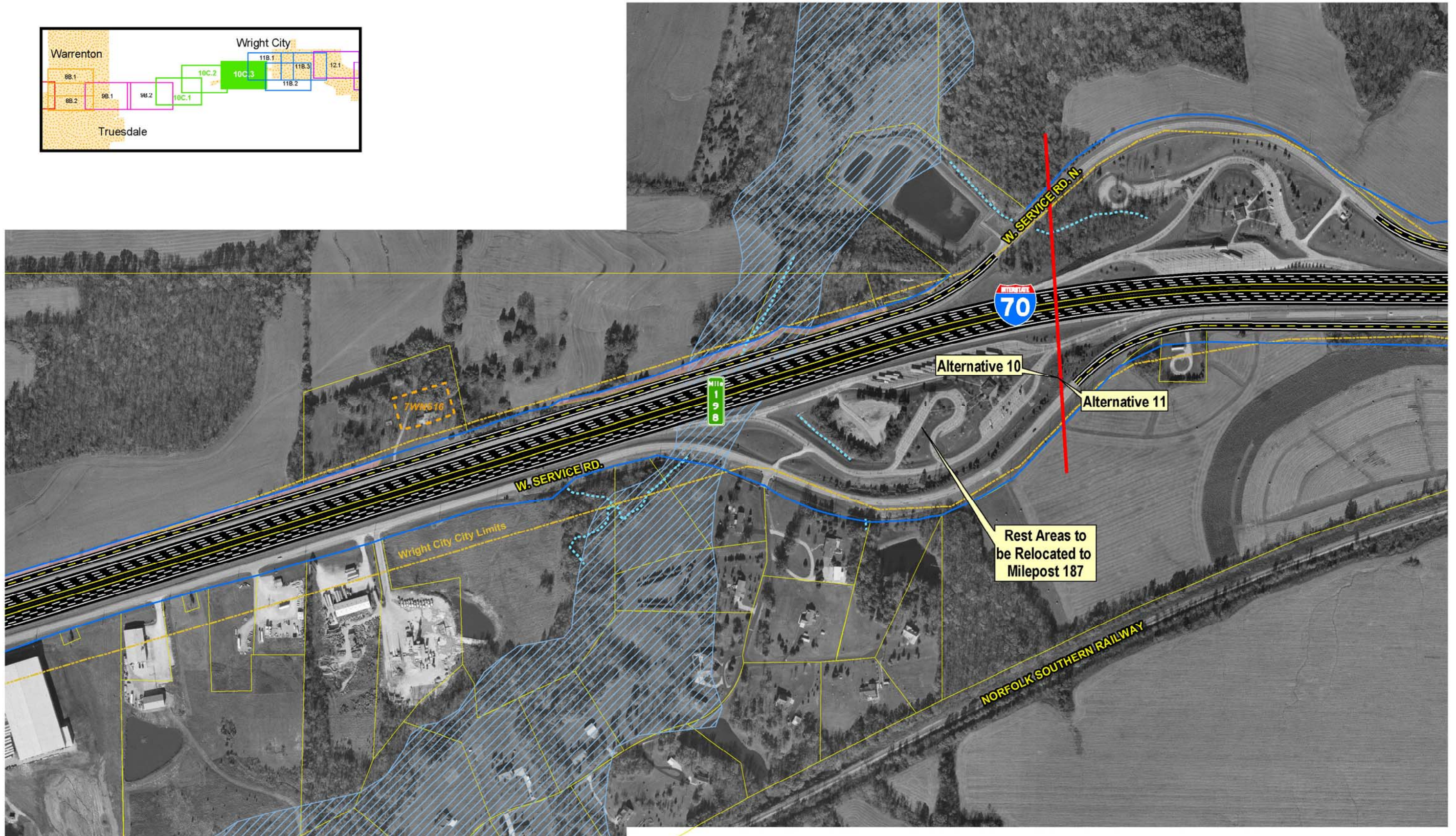
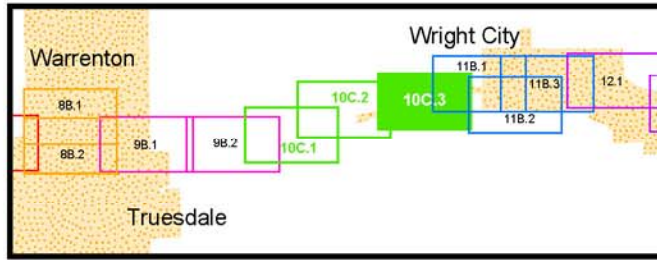
SIU
7
 Route 19
 to
 Lake St. Louis

- | | | | | | |
|---------------------------|---------------|-----------------------|-------------------------------|--|-----------------------------|
| — Limited Access R/W | — City Limits | ▲ Schools | — Lakes | — Existing Pavement to Remain | — Intermittent Streams |
| — Right-In, Right-Out R/W | — Cemeteries | ▲ Hazardous Materials | — Jurisdictional Ponds | — NRHP Eligible Resource (w/MoDOT Resource Number) | — Perennial Streams |
| — Normal R/W | — Churches | — Parks | — Jurisdictional Wetlands | — Parcel Boundary | — Residential Displacements |
| — Proposed Bridge | — Hospitals | — Floodplains | — Non-Jurisdictional Wetlands | | — Commercial Displacements |
| | | | | | — Land Acquisition |

Widening Improvements to Existing Corridor- Alternative 10C (Preferred)

Scale: 1" = 400'

EXHIBIT
10C.1



SIU
7
Route 19
to
Lake St. Louis

- | | | | | | |
|---------------------------|---------------|-----------------------|-------------------------------|--|-----------------------------|
| — Limited Access R/W | — City Limits | ▲ Schools | — Lakes | — Existing Pavement to Remain | — Intermittent Streams |
| — Right-In, Right-Out R/W | — Cemeteries | ▲ Hazardous Materials | — Jurisdictional Ponds | — NRHP Eligible Resource (w/MoDOT Resource Number) | — Perennial Streams |
| — Normal R/W | — Churches | — Parks | — Jurisdictional Wetlands | — Parcel Boundary | — Residential Displacements |
| — Proposed Bridge | — Hospitals | — Floodplains | — Non-Jurisdictional Wetlands | | — Commercial Displacements |
| | | | | | — Land Acquisition |

Widening Improvements to Existing Corridor- Alternative 10C (Preferred)

EXHIBIT 10C.3

Scale: 1" = 400'



SIU
7
Route 19
to
Lake St. Louis

- | | | | | | |
|---------------------------|---------------|-----------------------|-------------------------------|--|-----------------------------|
| — Limited Access R/W | — City Limits | ▲ Schools | — Lakes | — Existing Pavement to Remain | — Intermittent Streams |
| — Right-In, Right-Out R/W | — Cemeteries | ▲ Hazardous Materials | — Jurisdictional Ponds | — NRHP Eligible Resource (w/MoDOT Resource Number) | — Perennial Streams |
| — Normal R/W | — Churches | — Parks | — Jurisdictional Wetlands | — Parcel Boundary | — Residential Displacements |
| — Proposed Bridge | — Hospitals | — Floodplains | — Non-Jurisdictional Wetlands | | — Commercial Displacements |
| | | | | | — Land Acquisition |

Widening Improvements to Existing Corridor- Alternative 10C (Preferred)

Scale: 1" = 400'

EXHIBIT 10C.2