

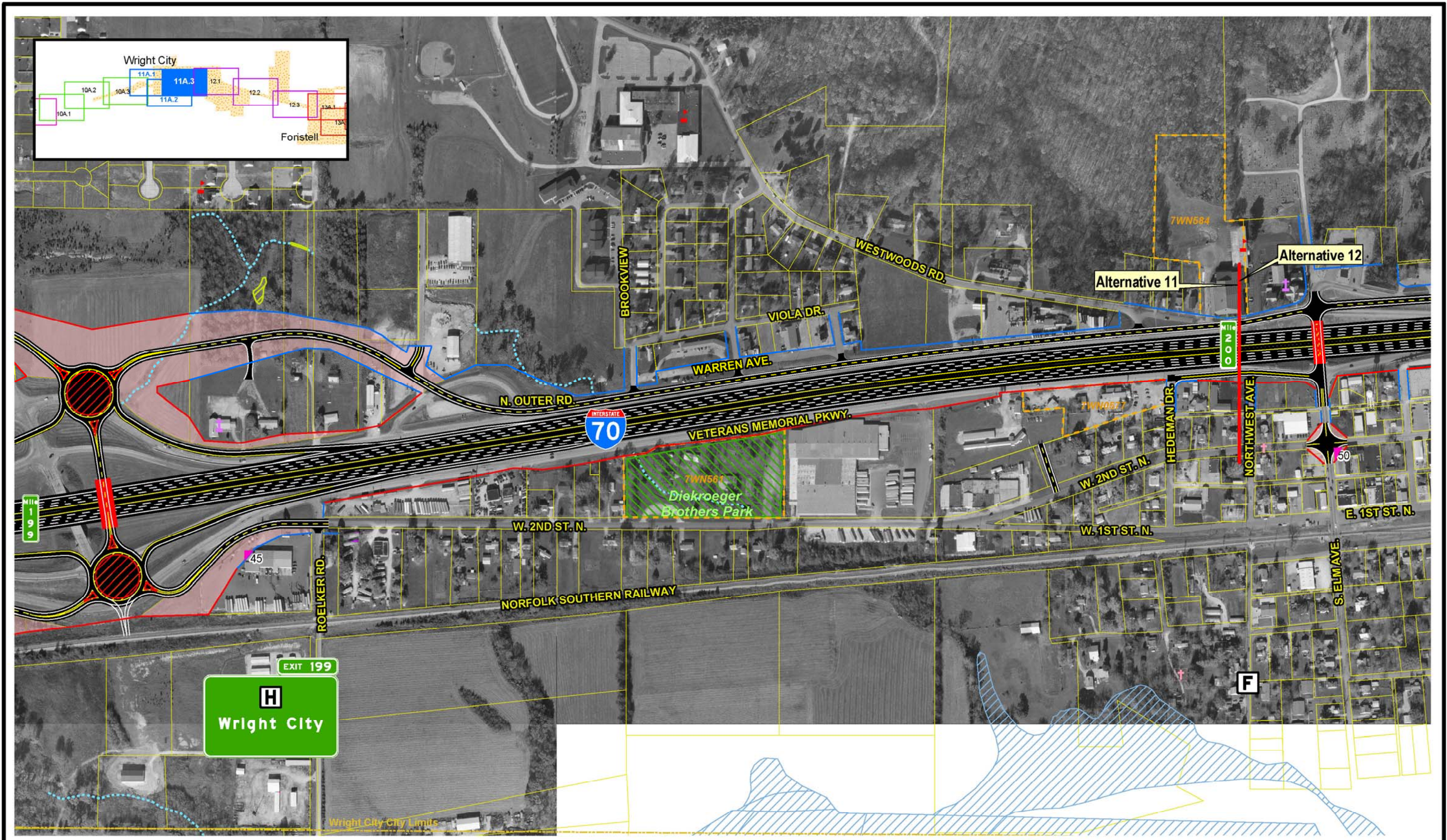
SIU  
7  
Route 19  
to  
Lake St. Louis

<ul style="list-style-type: none"> <li><span style="color: red;">—</span> Limited Access R/W</li> <li><span style="color: green;">—</span> Right-In, Right-Out R/W</li> <li><span style="color: blue;">—</span> Normal R/W</li> <li><span style="color: red;">—</span> Proposed Bridge</li> </ul>	<ul style="list-style-type: none"> <li><span style="border: 1px dashed yellow; display: inline-block; width: 10px; height: 10px;"></span> City Limits</li> <li><span style="border: 1px dashed purple; display: inline-block; width: 10px; height: 10px;"></span> Cemeteries</li> <li><span style="border: 1px dashed pink; display: inline-block; width: 10px; height: 10px;"></span> Churches</li> <li><span style="border: 1px dashed blue; display: inline-block; width: 10px; height: 10px;"></span> Hospitals</li> </ul>	<ul style="list-style-type: none"> <li><span style="color: red;">▲</span> Schools</li> <li><span style="color: orange;">▲</span> Hazardous Materials</li> <li><span style="color: green;">■</span> Parks</li> <li><span style="border: 1px dashed blue; display: inline-block; width: 10px; height: 10px;"></span> Floodplains</li> </ul>	<ul style="list-style-type: none"> <li><span style="color: lightblue;">■</span> Lakes</li> <li><span style="color: lightblue;">■</span> Jurisdictional Ponds</li> <li><span style="border: 1px dashed yellow; display: inline-block; width: 10px; height: 10px;"></span> Jurisdictional Wetlands</li> <li><span style="border: 1px dashed pink; display: inline-block; width: 10px; height: 10px;"></span> Non-Jurisdictional Wetlands</li> </ul>	<ul style="list-style-type: none"> <li><span style="border: 1px dashed grey; display: inline-block; width: 10px; height: 10px;"></span> Existing Pavement to Remain</li> <li><span style="border: 1px dashed orange; display: inline-block; width: 10px; height: 10px;"></span> NRHP Eligible Resource (w/MoDOT Resource Number)</li> <li><span style="border: 1px dashed yellow; display: inline-block; width: 10px; height: 10px;"></span> Parcel Boundary</li> </ul>	<ul style="list-style-type: none"> <li><span style="border-bottom: 1px dashed blue; display: inline-block; width: 10px;"></span> Intermittent Streams</li> <li><span style="border-bottom: 1px solid blue; display: inline-block; width: 10px;"></span> Perennial Streams</li> <li><span style="background-color: purple; width: 10px; height: 10px;"></span> Residential Displacements</li> <li><span style="background-color: pink; width: 10px; height: 10px;"></span> Commercial Displacements</li> <li><span style="background-color: lightcoral; width: 10px; height: 10px;"></span> Land Acquisition</li> </ul>
---	--	---	---	---	--

**Widening Improvements to Existing Corridor- Alternative 11A (Preferred)**

EXHIBIT 11A.1

Scale: 1" = 400'



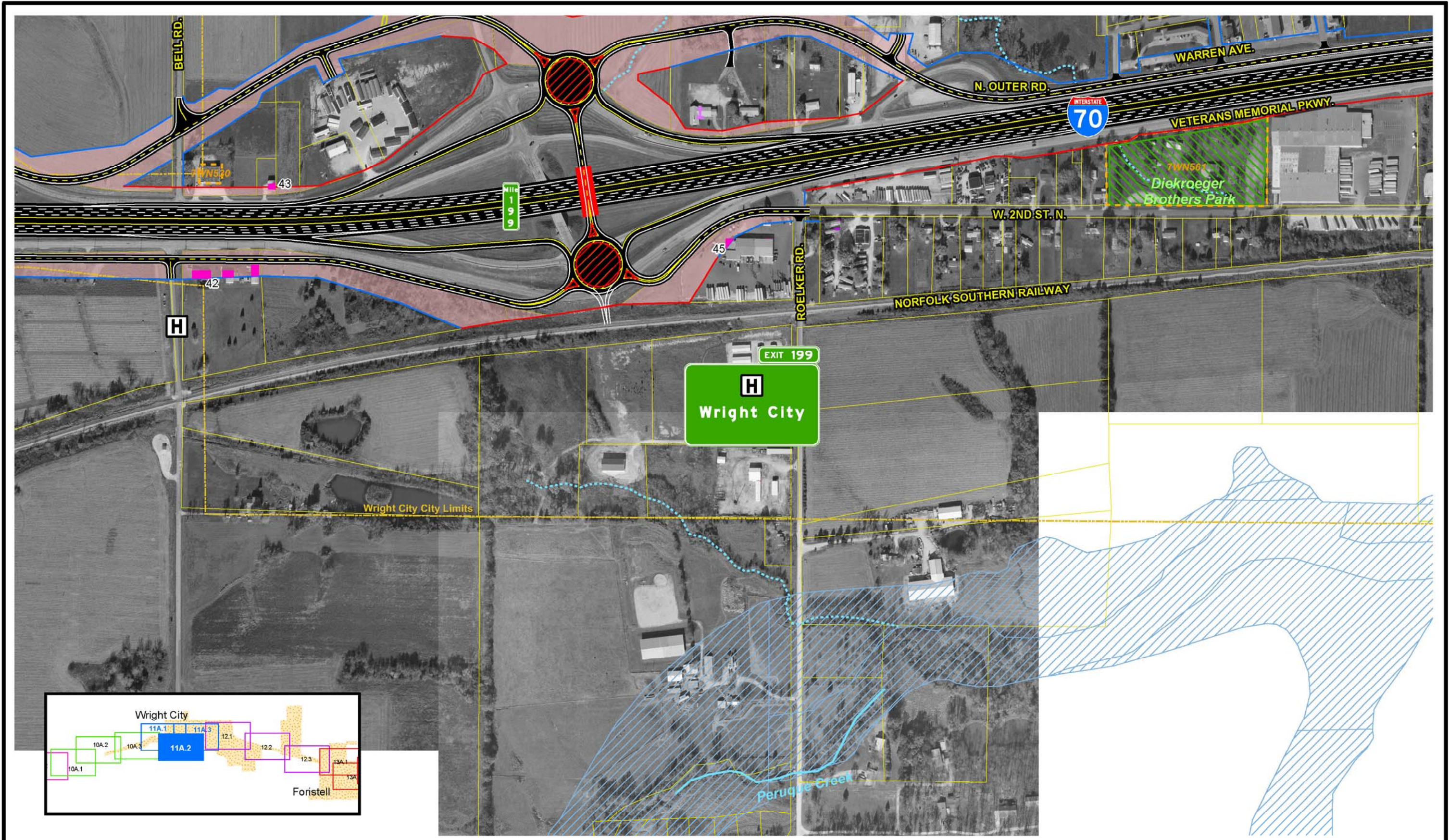
SIU  
7  
Route 19  
to  
Lake St. Louis

- |  |  |  |   |  |  |
|--|--|--|---|--|--|
| <ul style="list-style-type: none"> <li>— Limited Access R/W</li> <li>— Right-In, Right-Out R/W</li> <li>— Normal R/W</li> <li>— Proposed Bridge</li> </ul> | <ul style="list-style-type: none"> <li>— City Limits</li> <li>— Cemeteries</li> <li>— Churches</li> <li>— Hospitals</li> </ul> | <ul style="list-style-type: none"> <li>— Schools</li> <li>— Hazardous Materials</li> <li>— Parks</li> <li>— Floodplains</li> </ul> | <ul style="list-style-type: none"> <li>— Lakes</li> <li>— Jurisdictional Ponds</li> <li>— Jurisdictional Wetlands</li> <li>— Non-Jurisdictional Wetlands</li> </ul> | <ul style="list-style-type: none"> <li>— Existing Pavement to Remain</li> <li>— NRHP Eligible Resource (w/MoDOT Resource Number)</li> <li>— Parcel Boundary</li> </ul> | <ul style="list-style-type: none"> <li>— Intermittent Streams</li> <li>— Perennial Streams</li> <li>— Residential Displacements</li> <li>— Commercial Displacements</li> <li>— Land Acquisition</li> </ul> |
|--|--|--|---|--|--|

**Widening Improvements to Existing Corridor- Alternative 11A (Preferred)**

Scale: 1" = 400'

EXHIBIT  
**11A.3**



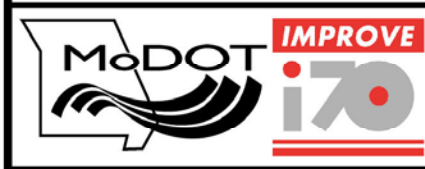
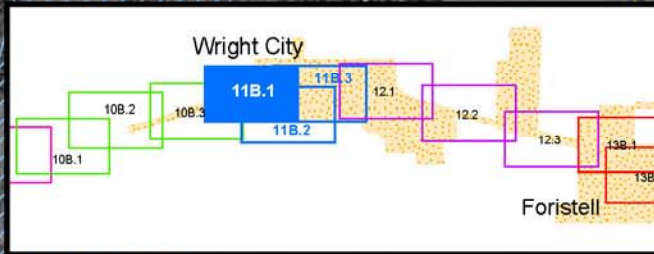
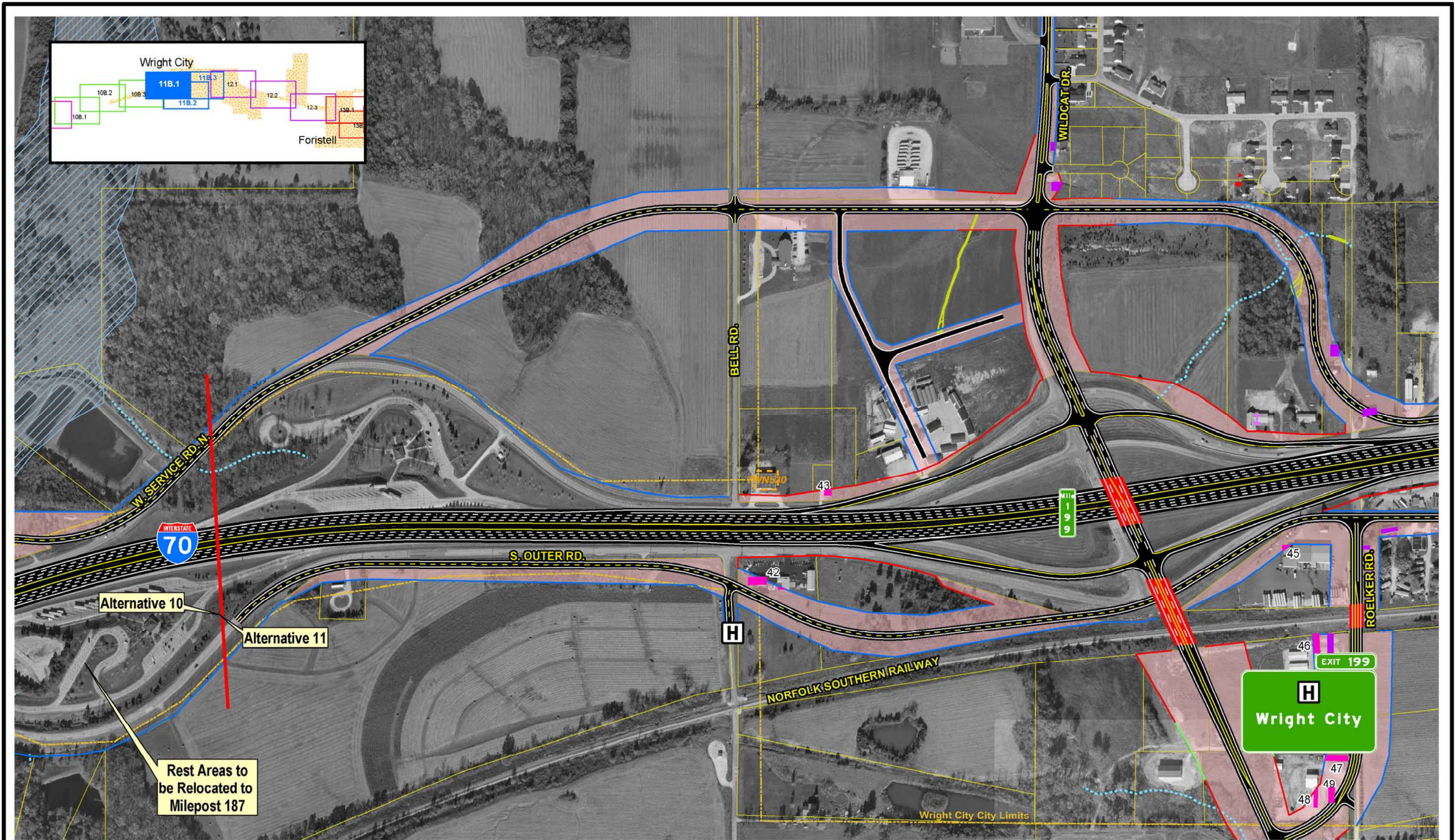
SIU  
**7**  
 Route 19  
 to  
 Lake St. Louis

- |   |  |  |  |   |  |
|---|--|--|--|---|--|
| <ul style="list-style-type: none"> <li><span style="color: red;">—</span> Limited Access R/W</li> <li><span style="color: green;">—</span> Right-In, Right-Out R/W</li> <li><span style="color: blue;">—</span> Normal R/W</li> <li><span style="color: red;">—</span> Proposed Bridge</li> </ul> | <ul style="list-style-type: none"> <li><span style="border: 1px dashed yellow; display: inline-block; width: 10px; height: 10px;"></span> City Limits</li> <li><span style="border: 1px dashed purple; display: inline-block; width: 10px; height: 10px;"></span> Cemeteries</li> <li><span style="border: 1px dashed pink; display: inline-block; width: 10px; height: 10px;"></span> Churches</li> <li><span style="border: 1px dashed blue; display: inline-block; width: 10px; height: 10px;"></span> Hospitals</li> </ul> | <ul style="list-style-type: none"> <li><span style="color: red;">▲</span> Schools</li> <li><span style="color: brown;">▲</span> Hazardous Materials</li> <li><span style="color: green;">■</span> Parks</li> <li><span style="border: 1px dashed blue; display: inline-block; width: 10px; height: 10px;"></span> Floodplains</li> </ul> | <ul style="list-style-type: none"> <li><span style="color: blue;">■</span> Lakes</li> <li><span style="color: lightblue;">■</span> Jurisdictional Ponds</li> <li><span style="border: 1px dashed yellow; display: inline-block; width: 10px; height: 10px;"></span> Jurisdictional Wetlands</li> <li><span style="border: 1px dashed pink; display: inline-block; width: 10px; height: 10px;"></span> Non-Jurisdictional Wetlands</li> </ul> | <ul style="list-style-type: none"> <li><span style="border: 1px dashed grey; display: inline-block; width: 10px; height: 10px;"></span> Existing Pavement to Remain</li> <li><span style="border: 1px dashed orange; display: inline-block; width: 10px; height: 10px;"></span> NRHP Eligible Resource (w/MoDOT Resource Number)</li> <li><span style="border: 1px dashed yellow; display: inline-block; width: 10px; height: 10px;"></span> Parcel Boundary</li> </ul> | <ul style="list-style-type: none"> <li><span style="border: 1px dashed blue; display: inline-block; width: 10px; height: 10px;"></span> Intermittent Streams</li> <li><span style="border: 1px dashed cyan; display: inline-block; width: 10px; height: 10px;"></span> Perennial Streams</li> <li><span style="border: 1px dashed purple; display: inline-block; width: 10px; height: 10px;"></span> Residential Displacements</li> <li><span style="border: 1px dashed pink; display: inline-block; width: 10px; height: 10px;"></span> Commercial Displacements</li> <li><span style="border: 1px dashed red; display: inline-block; width: 10px; height: 10px;"></span> Land Acquisition</li> </ul> |
|---|--|--|--|---|--|

Scale: 1" = 400'

**Widening Improvements to Existing Corridor- Alternative 11A (Preferred)**

EXHIBIT  
**11A.2**



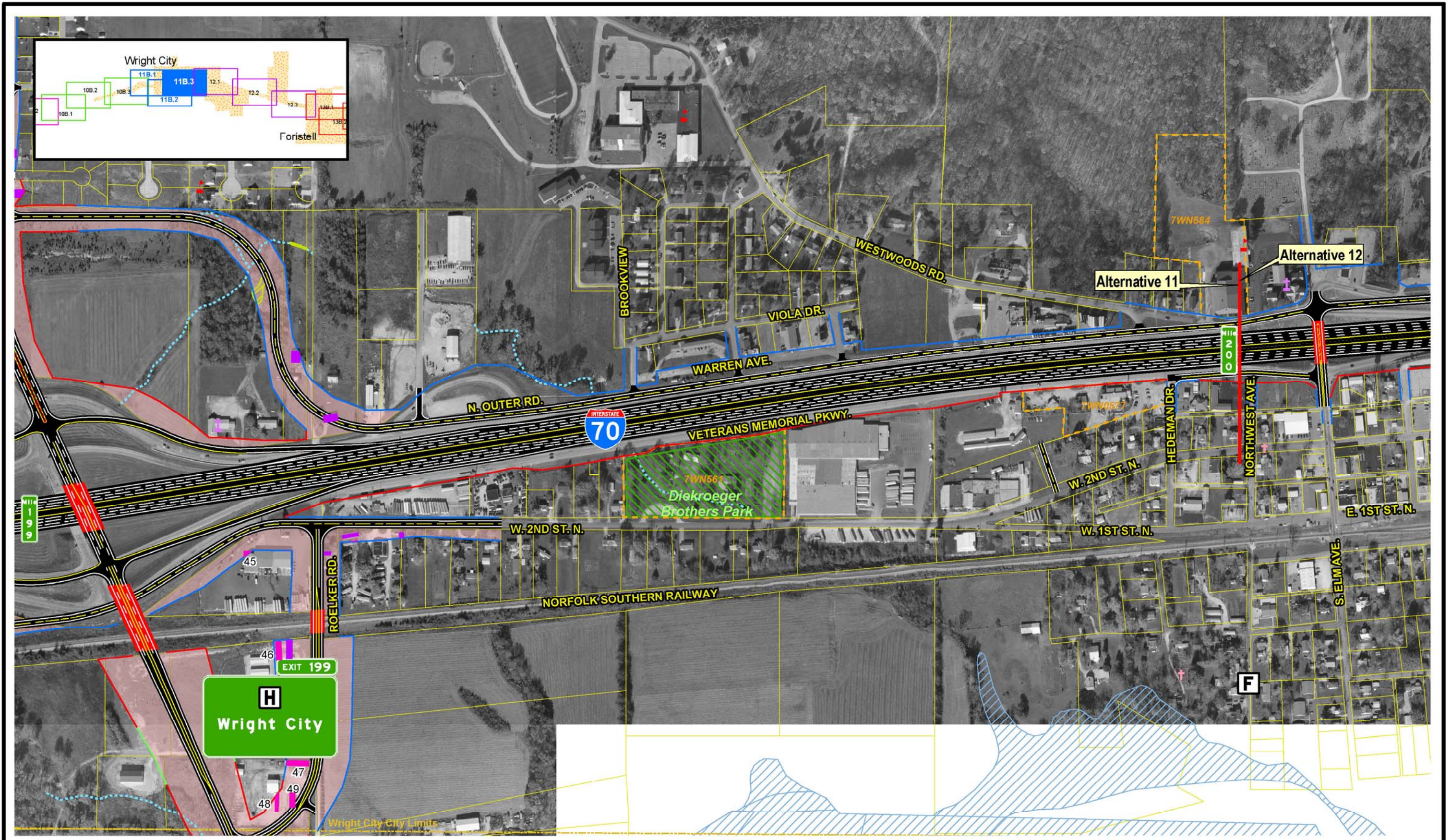
SIU  
**7**  
 Route 19  
 to  
 Lake St. Louis

- |   |   |  |   |   |
|---|---|--|---|---|
| <ul style="list-style-type: none"> <li><span style="color: red;">—</span> Limited Access R/W</li> <li><span style="color: green;">—</span> Right-In, Right-Out R/W</li> <li><span style="color: blue;">—</span> Normal R/W</li> <li><span style="color: red;">—</span> Proposed Bridge</li> </ul> | <ul style="list-style-type: none"> <li><span style="border: 1px dashed yellow; display: inline-block; width: 10px; height: 10px;"></span> City Limits</li> <li><span style="border: 1px dashed purple; display: inline-block; width: 10px; height: 10px;"></span> Cemeteries</li> <li><span style="border: 1px dashed pink; display: inline-block; width: 10px; height: 10px;"></span> Churches</li> <li><span style="color: blue;">+</span> Hospitals</li> </ul> | <ul style="list-style-type: none"> <li><span style="color: red;">▲</span> Schools</li> <li><span style="color: brown;">▲</span> Hazardous Materials</li> <li><span style="color: green;">■</span> Parks</li> <li><span style="border: 1px dashed blue; display: inline-block; width: 10px; height: 10px;"></span> Floodplains</li> </ul> | <ul style="list-style-type: none"> <li><span style="color: lightblue;">■</span> Lakes</li> <li><span style="color: lightblue;">■</span> Jurisdictional Ponds</li> <li><span style="border: 1px dashed yellow; display: inline-block; width: 10px; height: 10px;"></span> Jurisdictional Wetlands</li> <li><span style="border: 1px dashed pink; display: inline-block; width: 10px; height: 10px;"></span> Non-Jurisdictional Wetlands</li> <li><span style="border: 1px dashed yellow; display: inline-block; width: 10px; height: 10px;"></span> Parcel Boundary</li> </ul> | <ul style="list-style-type: none"> <li><span style="background-color: gray; border: 1px solid gray; display: inline-block; width: 10px; height: 10px;"></span> Existing Pavement to Remain</li> <li><span style="border: 1px dashed orange; display: inline-block; width: 10px; height: 10px;"></span> NRHP Eligible Resource (w/MoDOT Resource Number)</li> <li><span style="border: 1px dashed yellow; display: inline-block; width: 10px; height: 10px;"></span> Intermittent Streams</li> <li><span style="border: 1px dashed blue; display: inline-block; width: 10px; height: 10px;"></span> Perennial Streams</li> <li><span style="color: purple;">■</span> Residential Displacements</li> <li><span style="color: pink;">■</span> Commercial Displacements</li> <li><span style="color: red;">■</span> Land Acquisition</li> </ul> |
|---|---|--|---|---|

**Widening Improvements to Existing Corridor- Alternative 11B**

Scale: 1" = 400'

EXHIBIT  
**11B.1**



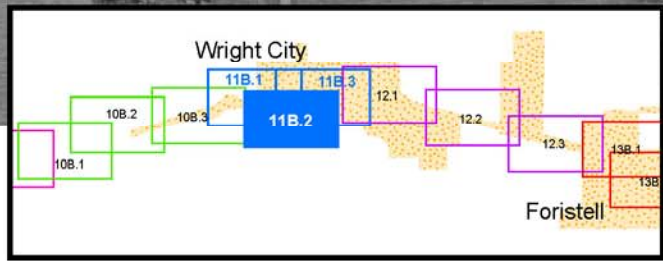
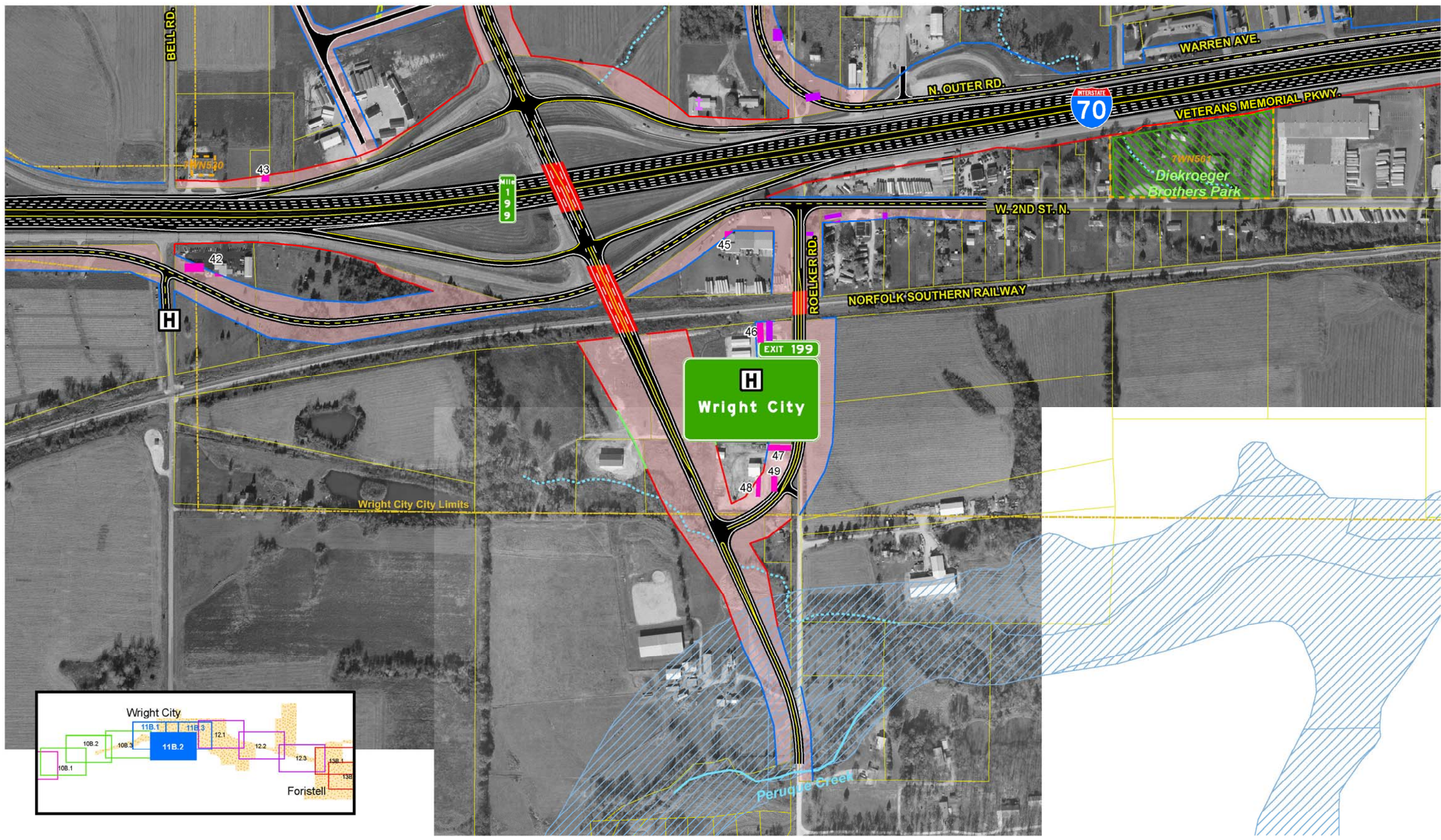
SIU  
**7**  
 Route 19  
 to  
 Lake St. Louis

- |   |   |   |  |   |   |
|---|---|---|--|---|---|
| <ul style="list-style-type: none"> <li><span style="color: red;">—</span> Limited Access R/W</li> <li><span style="color: green;">—</span> Right-In, Right-Out R/W</li> <li><span style="color: blue;">—</span> Normal R/W</li> </ul> | <ul style="list-style-type: none"> <li><span style="border: 1px solid yellow; display: inline-block; width: 10px; height: 10px;"></span> City Limits</li> <li><span style="border: 1px solid purple; display: inline-block; width: 10px; height: 10px;"></span> Cemeteries</li> <li><span style="border: 1px solid purple; display: inline-block; width: 10px; height: 10px;"></span> Churches</li> <li><span style="color: blue; font-weight: bold;">+</span> Hospitals</li> </ul> | <ul style="list-style-type: none"> <li><span style="color: red;">▲</span> Schools</li> <li><span style="color: brown;">▲</span> Hazardous Materials</li> <li><span style="color: green;">■</span> Parks</li> <li><span style="border: 1px solid blue; display: inline-block; width: 10px; height: 10px;"></span> Floodplains</li> </ul> | <ul style="list-style-type: none"> <li><span style="color: lightblue;">■</span> Lakes</li> <li><span style="color: lightblue;">■</span> Jurisdictional Ponds</li> <li><span style="color: yellow;">■</span> Jurisdictional Wetlands</li> <li><span style="color: magenta;">■</span> Non-Jurisdictional Wetlands</li> </ul> | <ul style="list-style-type: none"> <li><span style="border: 1px solid gray; display: inline-block; width: 10px; height: 10px;"></span> Existing Pavement to Remain</li> <li><span style="border: 1px dashed orange; display: inline-block; width: 10px; height: 10px;"></span> NRHP Eligible Resource (w/MoDOT Resource Number)</li> <li><span style="border: 1px solid yellow; display: inline-block; width: 10px; height: 10px;"></span> Parcel Boundary</li> </ul> | <ul style="list-style-type: none"> <li><span style="color: blue; font-weight: bold;">⋯</span> Intermittent Streams</li> <li><span style="color: blue;">—</span> Perennial Streams</li> <li><span style="color: magenta;">■</span> Residential Displacements</li> <li><span style="color: magenta;">■</span> Commercial Displacements</li> <li><span style="color: pink;">■</span> Land Acquisition</li> </ul> |
|---|---|---|--|---|---|

**Widening Improvements to Existing Corridor- Alternative 11B**

Scale: 1" = 400'

**EXHIBIT 11B.3**



SIU  
**7**  
Route 19  
to  
Lake St. Louis

- |   |  |  |  |   |  |
|---|--|--|--|---|--|
| <ul style="list-style-type: none"> <li><span style="color: red;">—</span> Limited Access R/W</li> <li><span style="color: green;">—</span> Right-In, Right-Out R/W</li> <li><span style="color: blue;">—</span> Normal R/W</li> <li><span style="color: red;">■</span> Proposed Bridge</li> </ul> | <ul style="list-style-type: none"> <li><span style="border: 1px dashed yellow; display: inline-block; width: 10px; height: 10px;"></span> City Limits</li> <li><span style="border: 1px dashed purple; display: inline-block; width: 10px; height: 10px;"></span> Cemeteries</li> <li><span style="border: 1px dashed pink; display: inline-block; width: 10px; height: 10px;"></span> Churches</li> <li><span style="border: 1px dashed blue; display: inline-block; width: 10px; height: 10px;"></span> Hospitals</li> </ul> | <ul style="list-style-type: none"> <li><span style="color: red;">▲</span> Schools</li> <li><span style="color: brown;">▲</span> Hazardous Materials</li> <li><span style="color: green;">■</span> Parks</li> <li><span style="border: 1px dashed blue; display: inline-block; width: 10px; height: 10px;"></span> Floodplains</li> </ul> | <ul style="list-style-type: none"> <li><span style="border: 1px solid blue; display: inline-block; width: 10px; height: 10px;"></span> Lakes</li> <li><span style="border: 1px solid lightblue; display: inline-block; width: 10px; height: 10px;"></span> Jurisdictional Ponds</li> <li><span style="border: 1px solid yellow; display: inline-block; width: 10px; height: 10px;"></span> Jurisdictional Wetlands</li> <li><span style="border: 1px solid pink; display: inline-block; width: 10px; height: 10px;"></span> Non-Jurisdictional Wetlands</li> </ul> | <ul style="list-style-type: none"> <li><span style="border: 1px solid gray; display: inline-block; width: 10px; height: 10px;"></span> Existing Pavement to Remain</li> <li><span style="border: 1px dashed orange; display: inline-block; width: 10px; height: 10px;"></span> NRHP Eligible Resource (w/MoDOT Resource Number)</li> <li><span style="border: 1px solid yellow; display: inline-block; width: 10px; height: 10px;"></span> Parcel Boundary</li> </ul> | <ul style="list-style-type: none"> <li><span style="border: 1px dashed blue; display: inline-block; width: 10px; height: 10px;"></span> Intermittent Streams</li> <li><span style="border: 1px solid blue; display: inline-block; width: 10px; height: 10px;"></span> Perennial Streams</li> <li><span style="border: 1px solid purple; display: inline-block; width: 10px; height: 10px;"></span> Residential Displacements</li> <li><span style="border: 1px solid pink; display: inline-block; width: 10px; height: 10px;"></span> Commercial Displacements</li> <li><span style="border: 1px solid red; display: inline-block; width: 10px; height: 10px;"></span> Land Acquisition</li> </ul> |
|---|--|--|--|---|--|

Widening Improvements to  
Existing Corridor-  
Alternative 11B

EXHIBIT  
**11B.2**

