

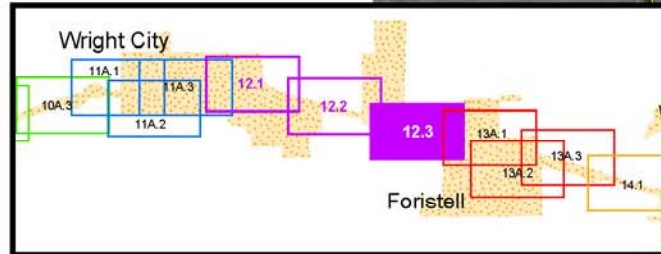
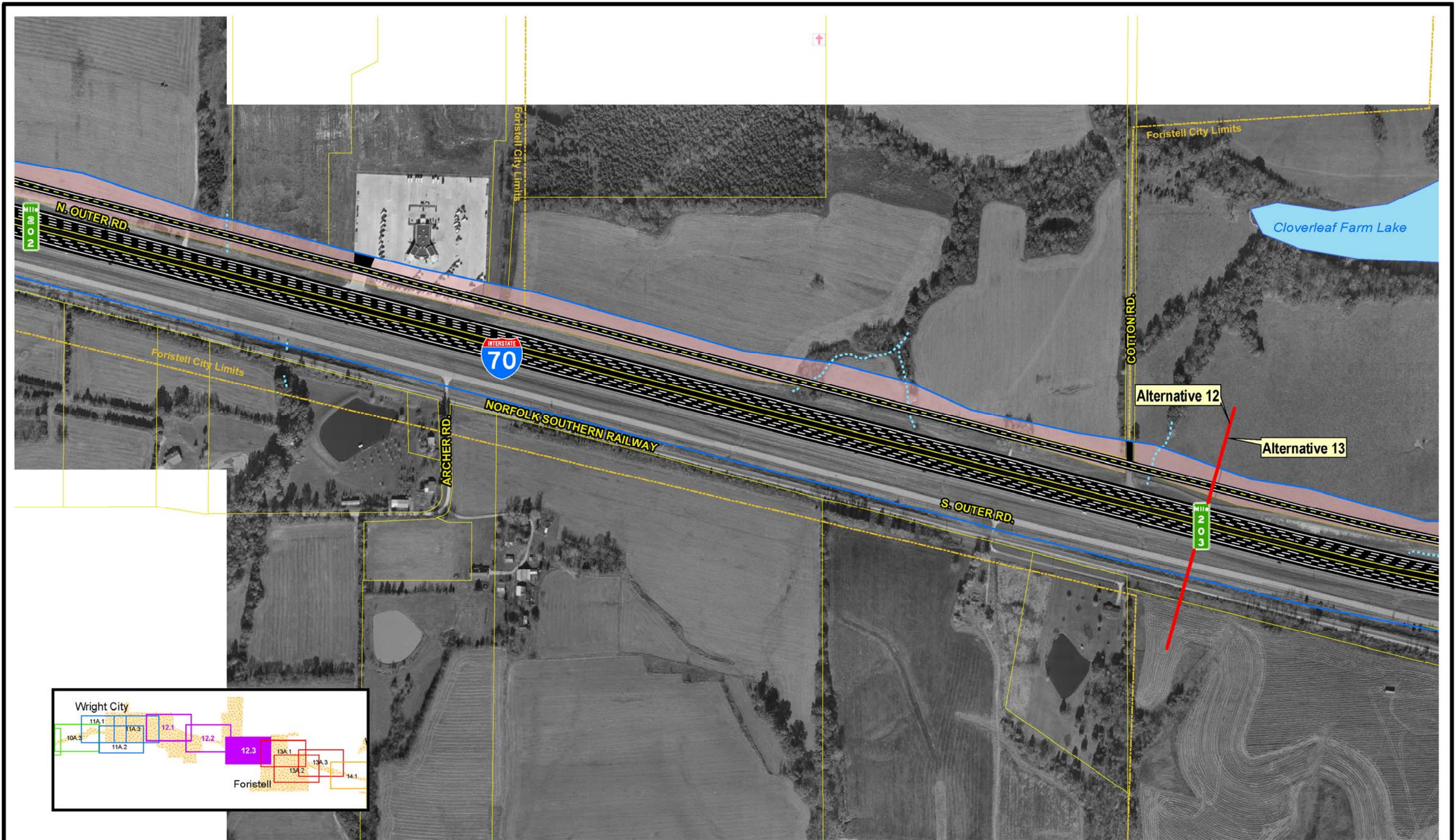
SIU
7
Route 19
to
Lake St. Louis

— Limited Access R/W	— City Limits	▲ Schools	— Lakes	— Existing Pavement to Remain	— Intermittent Streams
— Right-In, Right-Out R/W	⊕ Cemeteries	▲ Hazardous Materials	— Jurisdictional Ponds	— NRHP Eligible Resource (w/MoDOT Resource Number)	— Perennial Streams
— Normal R/W	⊕ Churches	▲ Parks	— Jurisdictional Wetlands	— Parcel Boundary	— Residential Displacement
— Proposed Bridge	⊕ Hospitals	▲ Floodplains	— Non-Jurisdictional Wetlands		— Commercial Displacement
					— Land Acquisition

Widening Improvements to Existing Corridor- Alternative 12 (Preferred)

Scale: 1" = 400'

EXHIBIT
12.1

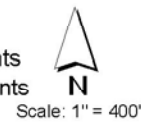


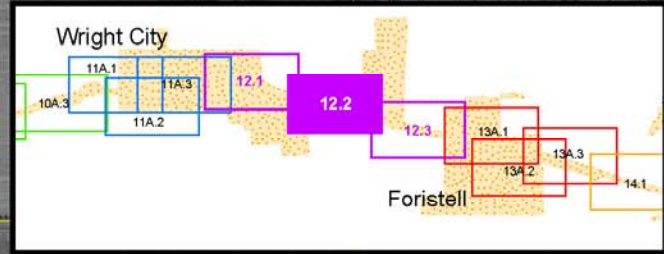
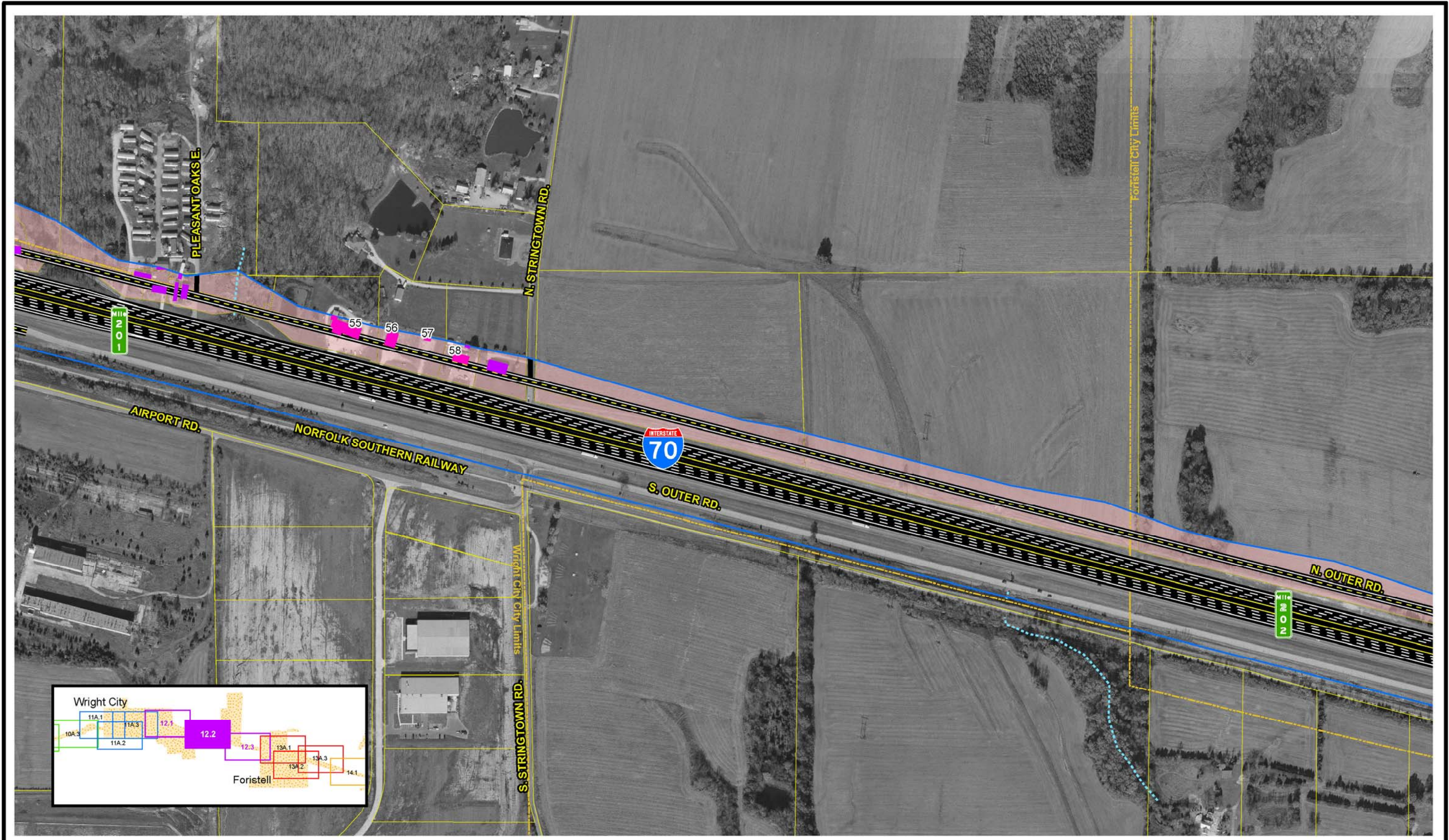
SIU
7
Route 19
to
Lake St. Louis

- | | | | | | |
|--------------------------|---------------|-----------------------|-------------------------------|--|-----------------------------|
| — Limited Access RW | — City Limits | ▲ Schools | — Lakes | — Existing Pavement to Remain | — Intermittent Streams |
| — Right-In, Right-Out RW | — Cemeteries | ▲ Hazardous Materials | — Jurisdictional Ponds | — NRHP Eligible Resource (w/MoDOT Resource Number) | — Perennial Streams |
| — Normal RW | — Churches | ▲ Parks | — Jurisdictional Wetlands | — Parcel Boundary | — Residential Displacements |
| — Proposed Bridge | — Hospitals | ▲ Floodplains | — Non-Jurisdictional Wetlands | | — Commercial Displacements |
| | | | | | — Land Acquisition |

Widening Improvements to
Existing Corridor-
Alternative 12 (Preferred)

EXHIBIT
12.3





SIU
7
Route 19
to
Lake St. Louis

- | | | | | | |
|---|--|---|--|---|--|
| <ul style="list-style-type: none"> — Limited Access R/W — Right-In, Right-Out R/W — Normal R/W — Proposed Bridge | <ul style="list-style-type: none"> City Limits Cemeteries Churches Hospitals | <ul style="list-style-type: none"> ▲ Schools ▲ Hazardous Materials ▲ Parks ▲ Floodplains | <ul style="list-style-type: none"> ■ Lakes ■ Jurisdictional Ponds ■ Jurisdictional Wetlands ■ Non-Jurisdictional Wetlands | <ul style="list-style-type: none"> Existing Pavement to Remain NRHP Eligible Resource (w/MoDOT Resource Number) Parcel Boundary | <ul style="list-style-type: none"> ⋯ Intermittent Streams — Perennial Streams ■ Residential Displacements ■ Commercial Displacements ■ Land Acquisition |
|---|--|---|--|---|--|

Widening Improvements to Existing Corridor- Alternative 12 (Preferred)

EXHIBIT 12.2

Scale: 1" = 400'